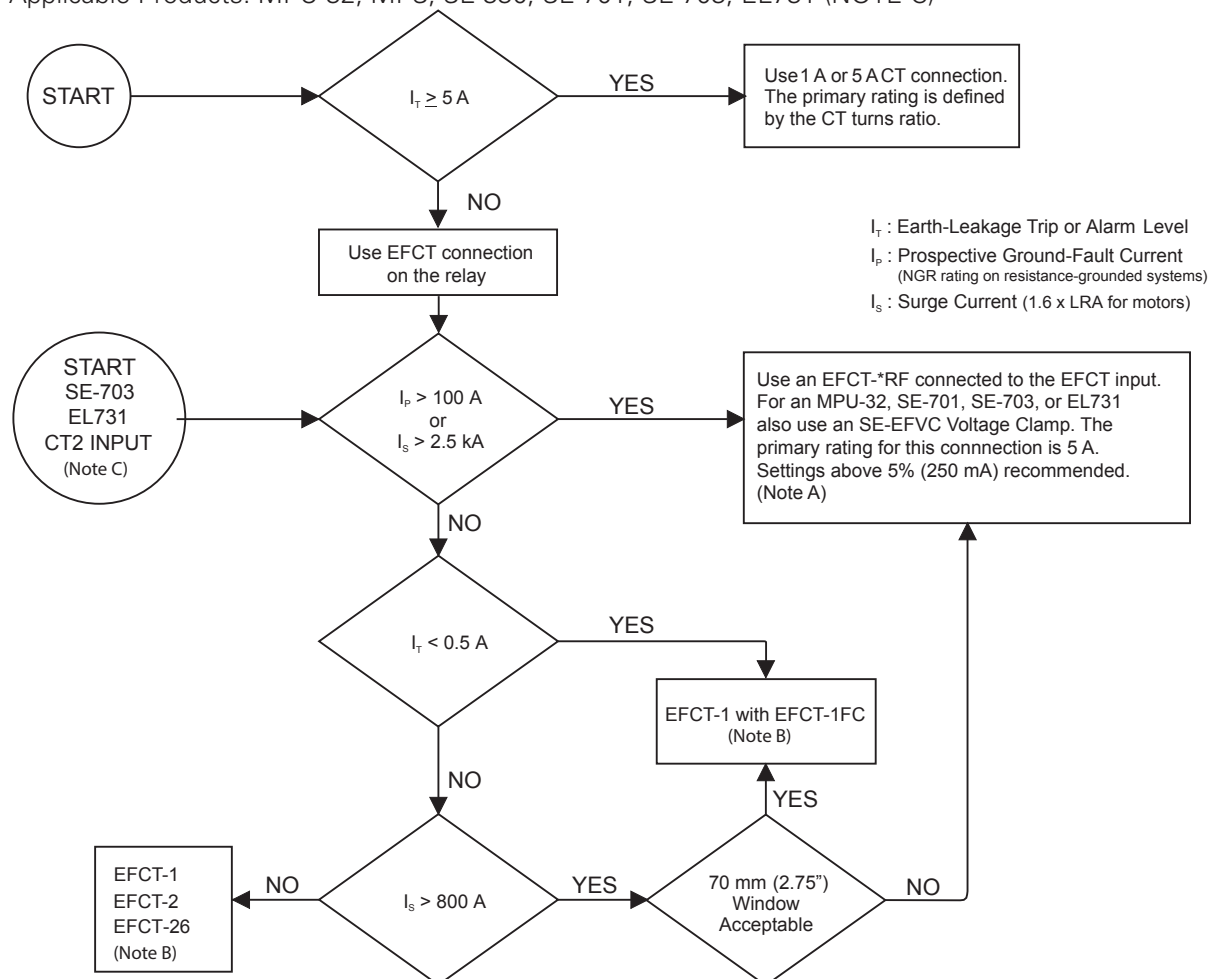


## CT-02 : GROUND-FAULT-CT SELECTION GUIDE

Applicable Products: MPU-32, MPS, SE-330, SE-701, SE-703, EL731 (NOTE C)



Note A:

EFCT-5RF, 60 mm (2.4") window diameter.

EFCT-6RF, 85 mm (3.3") window diameter.

EFCT-7RF, 112 mm (4.4") window diameter.

EFCT-8RF, 140 mm (5.5") window diameter.

EFCT-9RF, 160 mm (6.3") window diameter.

EFCT-10RF, 200 mm (7.9") window diameter.

Other 500:5 or 100:1 CT's may work, but the user should test to verify performance.

Note B:

EFCT-1: CT with no flux conditioner, 82 mm (3.23") window.

EFCT-1FC: EFCT-1 flux conditioner, 70 mm (2.75") window.

EFCT-2: CT complete with flux conditioner, 140 mm (5.50") window.

EFCT-26: CT with no flux conditioner, 26 mm (1") window.

Note C:

Applies to the EL731 CT2 input only. CT1 input accepts EFCT-26 (26 mm), EFCT-1 (82 mm), EFCT-2 (140 mm) only. CT1 input frequency response is DC to 90 Hz, CT2 Input frequency response is 20 to 6,000 Hz. EFCT-1FC is optional.

See the "Monitoring Neutral-Grounding Resistors - An Update" paper for ground-fault settings in resistance-grounded applications.