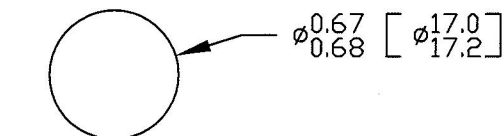
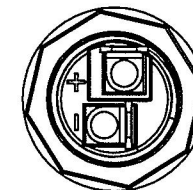


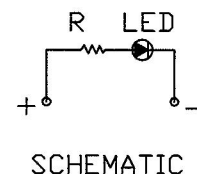
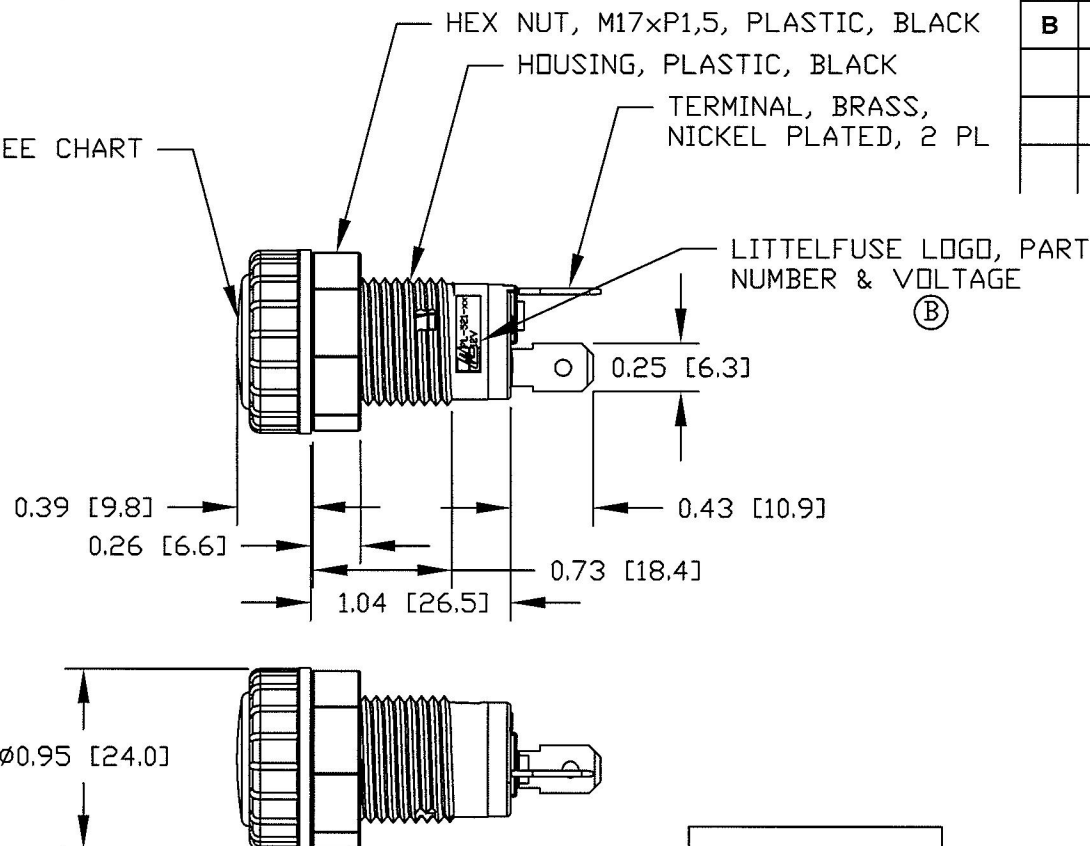
Revision Control Record

Rev.	Description of Change	ECN No.	Date
A	RELEASED DRAWING	11390	10/28/11
B	ADDED LABEL	12060	2/15/12



Mounting Hole

LENS & LED, SEE CHART



- NOTES:
1. POLARITY SENSITIVE
 2. RATING: 12Vdc
 3. ILLUMINATION: 500 LUX

PL-521-RC	RED
PL-521-GC	GREEN
PL-521-AC	AMBER
PT NO	LENS & LED COLOR

Tolerances Unless otherwise specifically noted, the following are default tolerances;

2-places $\pm 0.02"$ **3-places** $\pm 0.005"$ **Angular** $\pm 1^\circ$

Metric: Shown in [] refers to equivalent English Dim Tol

"REF." or an Asterisk (*) = Non-Toleranced Reference Dimension, shown for clarification purposes only.

NOTE: All tolerances are Non-Cumulative.

PROPRIETARY INFORMATION

This Engineering Drawing, and the information contained herein, is proprietary to Cole Hersee Company and may not be disclosed, re-produced, or in any other way transferred or communicated to any other party without the express written consent of an authorized representative of Cole Hersee Company.

Special Characteristics:

- ☒ CC Critical Characteristic, relating to Safety and/or Regulatory Compliance
- ☒ X Significant Characteristic relating to Process Control
- ☒ KC Control Dimension relating to Form - Fit - Function as defined by Cole Hersee Company and/or the Customer



Cole Hersee Co.

20 Old Colony Ave., South Boston, MA, 02127
Phn: 617-268-2100 Web: www.colehersee.com

Description:

PILOT LIGHT

Drawing / Part No.:

PL-521

Current Rev.

B

FORM CHT-6 (2/07)

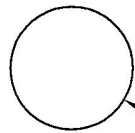
Used On:
or Ref.: **EX28910**

Scale: 1:1

Drawn BY: ABC

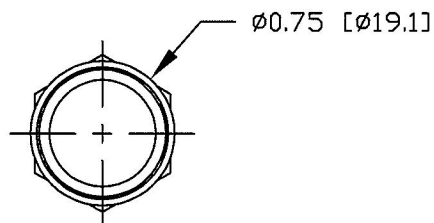
Date Drawn: 9/27/11

Pg. 1 of 1



Ø0.64 [Ø16.2]

MOUNTING HOLE

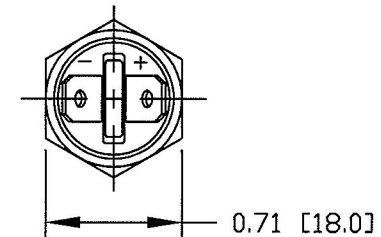
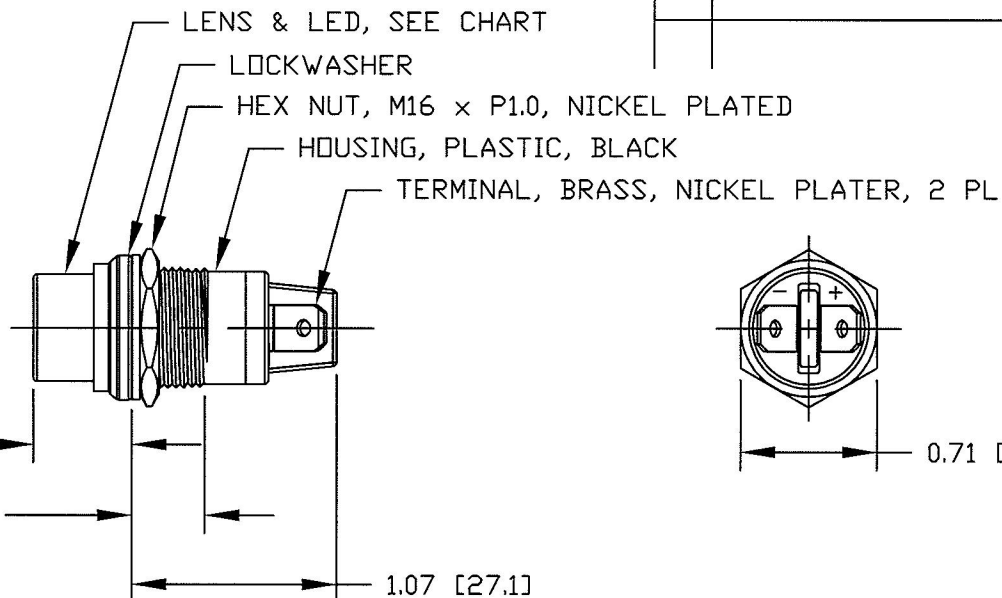


Ø0.75 [Ø19.1]

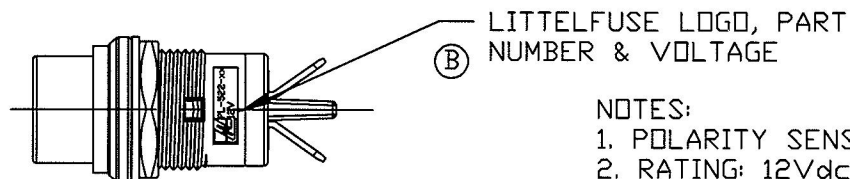
0.51 [13.0]

0.38 [9.6]

1.07 [27.1]



0.71 [18.0]

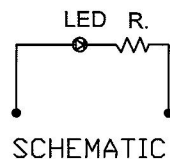


(B)

LITTELFUSE LOGO, PART
NUMBER & VOLTAGE

NOTES:

1. POLARITY SENSITIVE
2. RATING: 12Vdc
3. ILLUMINATION: 500 LUX



PL-522-RC	RED
PL-522-GC	GREEN
PL-522-AC	AMBER
PT NO	LENS & LED COLOR

Tolerances Unless otherwise specifically noted, the following are default tolerances;

2-places **3-places** **Angular**
+/- 0.02" **+/- 0.005"** **+/- 1°**

Metric: Shown in [] refers to equivalent English Dim Tol

"REF." or an Asterisk (*) = Non-Toleranced Reference Dimension, shown for clarification purposes only.

NOTE: All tolerances are Non-Cumulative.

PROPRIETARY INFORMATION

This Engineering Drawing, and the information contained herein, is proprietary to Cole Hersee Company and may not be disclosed, re-produced, or in any other way transferred or communicated to any other party without the express written consent of an authorized representative of Cole Hersee Company.

Special Characteristics:



Critical Characteristic, relating to Safety and/or Regulatory Compliance



Significant Characteristic relating to Process Control



Control Dimension relating to Form - Fit - Function as defined by Cole Hersee Company and/or the Customer



Cole Hersee Co.

20 Old Colony Ave., South Boston, MA, 02127
Phn: 617-268-2100 Web: www.colehersee.com

Description:

PILOT LIGHT, LED

**Drawing /
Part No.:**

PL-522

Current Rev.

B

FORM CHT-6 (2/07)

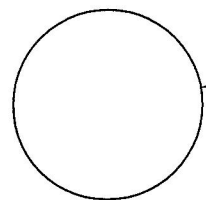
Used On
or Ref.: **EX28911**

Scale: 1:1

Drawn
BY: **DPS**

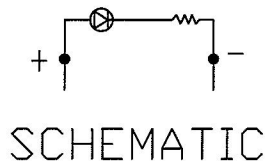
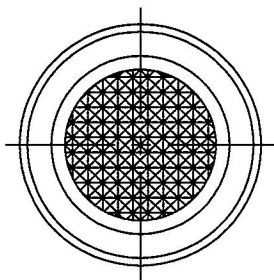
Date
Drawn: 9/30/11

Pg. 1 of 1



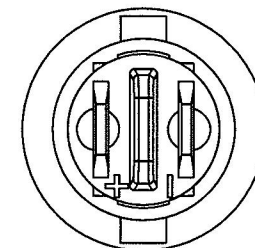
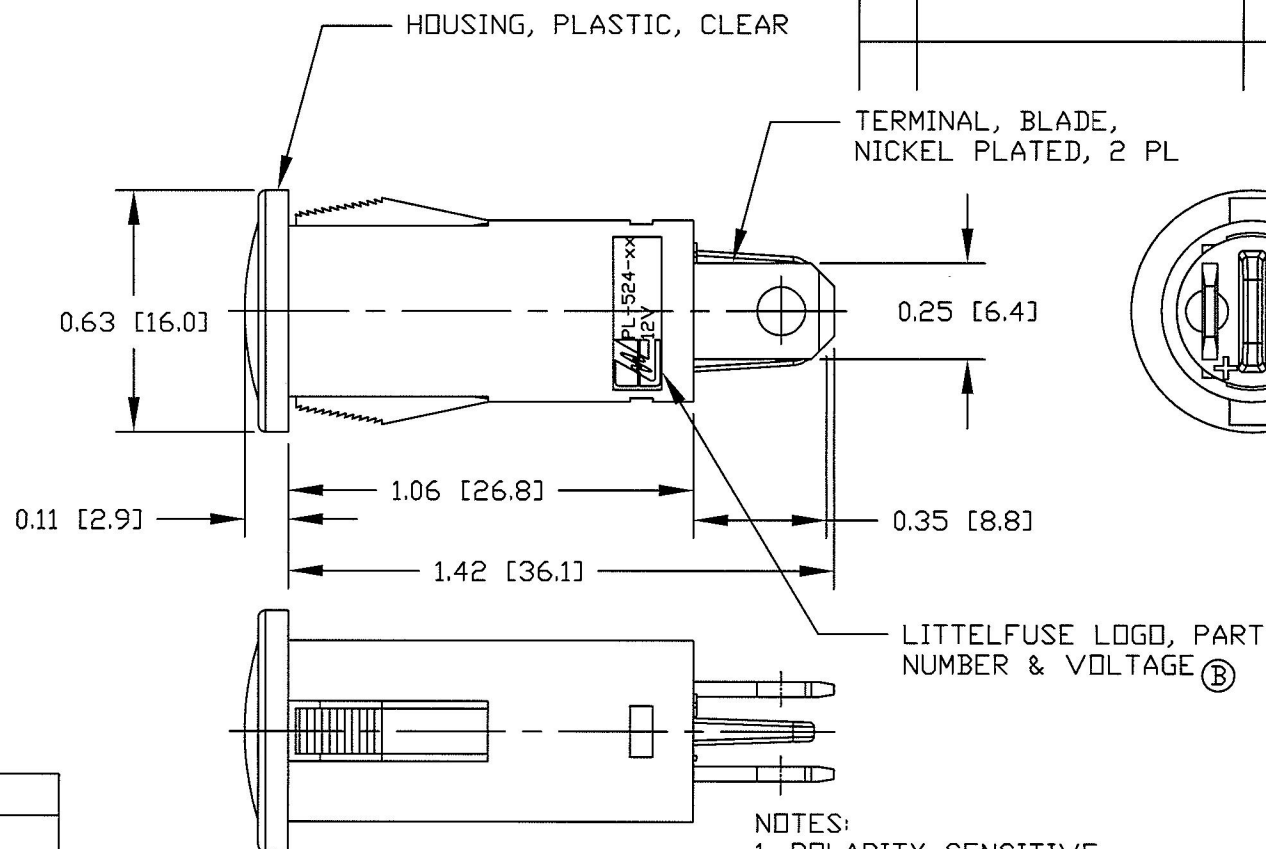
Ø0.49 [Ø12.5]

MOUNTING
HOLE



Revision Control Record

Rev.	Description of Change	ECN No.	Date
A	RELEASED DRAWING	11393	10/28/11
B	ADDED LABEL	12063	2/15/12



PL-524-RC	RED
PL-524-GC	GREEN
PL-524-AC	AMBER
PT NO	LENS & LED COLOR

- NOTES:
1. POLARITY SENSITIVE
 2. RATING: 12Vdc
 3. ILLUMINATION: 500 LUX

Tolerances Unless otherwise specifically noted, the following are default tolerances;

2-places **3-places** **Angular**
+/- 0.02" **+/- 0.005"** **+/- 1°**

Metric: Shown in [] refers to equivalent English Dim Tol

"REF." or an Asterisk (*) = Non-Toleranced Reference Dimension, Shown for clarification purposes only.

NOTE: All tolerances are Non-Cumulative.

PROPRIETARY INFORMATION
This Engineering Drawing, and the information contained herein, is proprietary to Cole Hersee Company and may not be disclosed, re-produced, or in any other way transferred or communicated to any other party without the express written consent of an authorized representative of Cole Hersee Company.

Special Characteristics:

- ☒ **CC** Critical Characteristic, relating to Safety and/or Regulatory Compliance
- ☒ **X** Significant Characteristic relating to Process Control
- ☒ **KC** Control Dimension relating to Form - Fit - Function as defined by Cole Hersee Company and/or the Customer



Cole Hersee Co.

20 Old Colony Ave., South Boston, MA, 02127
Phn: 617-268-2100 Web: www.colehersee.com

Description:

PILOT LIGHT LED

**Drawing /
Part No.:**

PL-524

Current Rev.

B

FORM CHT-6 (2/07)

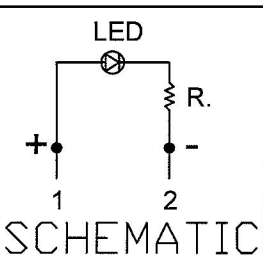
Used On
or Ref.: **EX28913**

Scale: 2:1

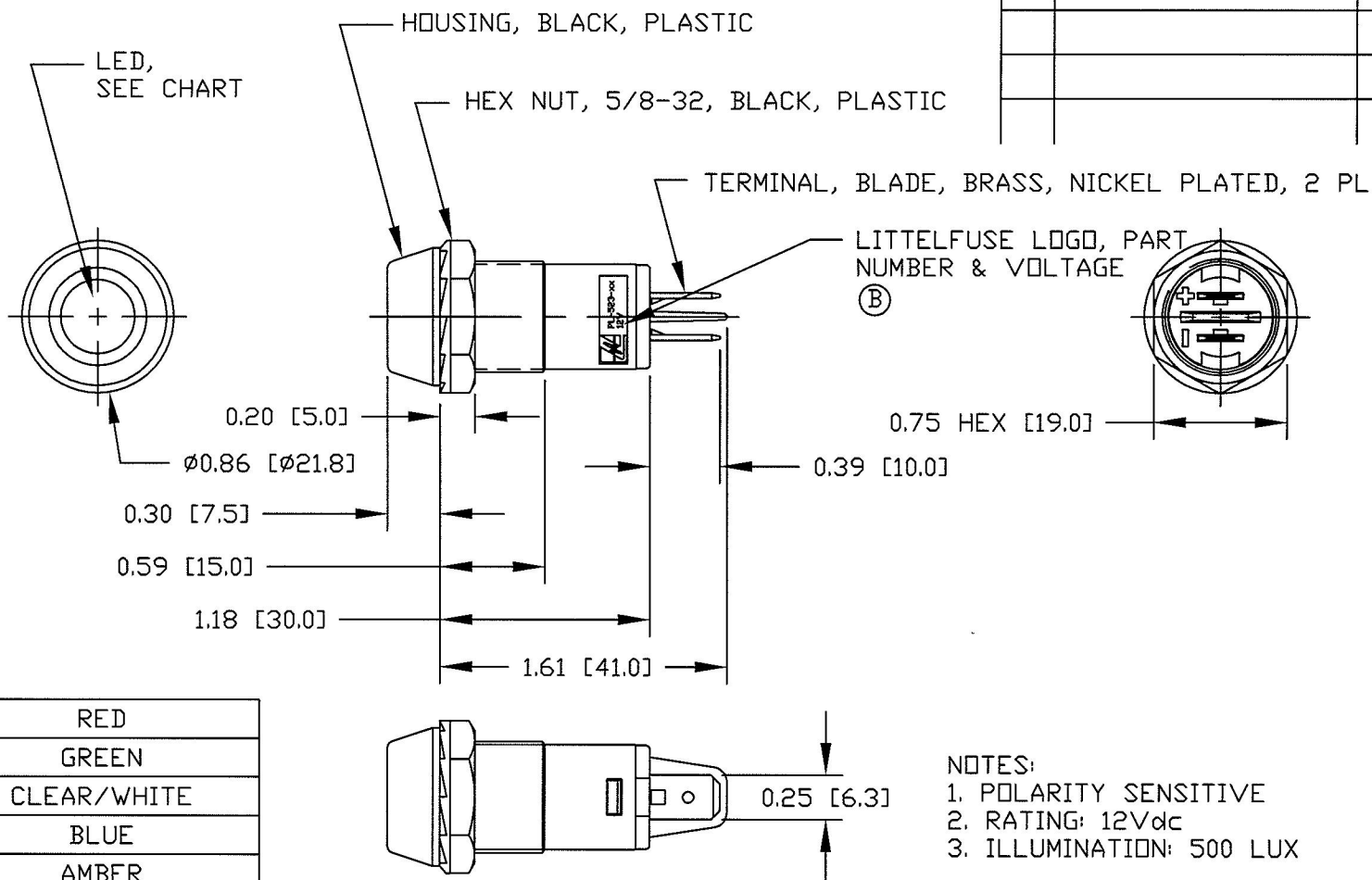
Drawn
BY: **DPS**

Date
Drawn: 9/27/11

Pg. 1 of 1



PL-523-RC	RED
PL-523-GC	GREEN
PL-523-CC	CLEAR/WHITE
PL-523-BC	BLUE
PL-523-AC	AMBER
PT NO	LENS & LED COLOR



<u>Revision Control Record</u>			
Rev.	Description of Change	ECN No.	Date
A	RELEASED DRAWING	11392	10/28/11
B	ADDED LABEL	12062	2/15/12

NOTES:
1. POLARITY SENSITIVE
2. RATING: 12Vdc
3. ILLUMINATION: 500 LUX

Tolerances Unless otherwise specifically noted, the following are default tolerances;

2-places +/- 0.02"	3-places +/- 0.005"	Angular +/- 1°
-----------------------	------------------------	-------------------

Metric: Shown in [] refers to equivalent English Dim Tol

"REF." or an Asterisk (*) = Non-Toleranced Reference Dimension, shown for clarification purposes only.

NOTE: All tolerances are Non-Cumulative.

PROPRIETARY INFORMATION

THIS PREPARED INFORMATION
This Engineering Drawing, and the information contained herein, is proprietary to Cole Hersee Company and may not be disclosed, re-produced, or in any other way transferred or communicated to any other party without the express written consent of an authorized representative of Cole Hersee Company.

Special Characteristics:

CC Critical Characteristic, relating to Safety and/or Regulatory Compliance

☒ Significant Characteristic relating to Process Control

**(KC) Control Dimension relating to Form -
Fit - Function as defined by Cole
Hersee Company and/or the Customer**



Cole Hersee Co.

20 Old Colony Ave., South Boston, MA, 02127
Phn: 617-268-2100 Web: www.colehersee.com

Description:

PILOT LIGHT, LED

Drawing /
Part No.:

PL-523

Current Rev.

B

Revision Control Record

Rev.	Description of Change	ECN No.	Date
A	RELEASED DRAWING	11394	10/28/11

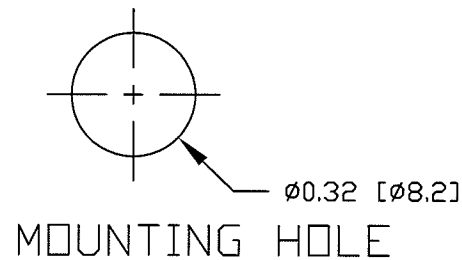
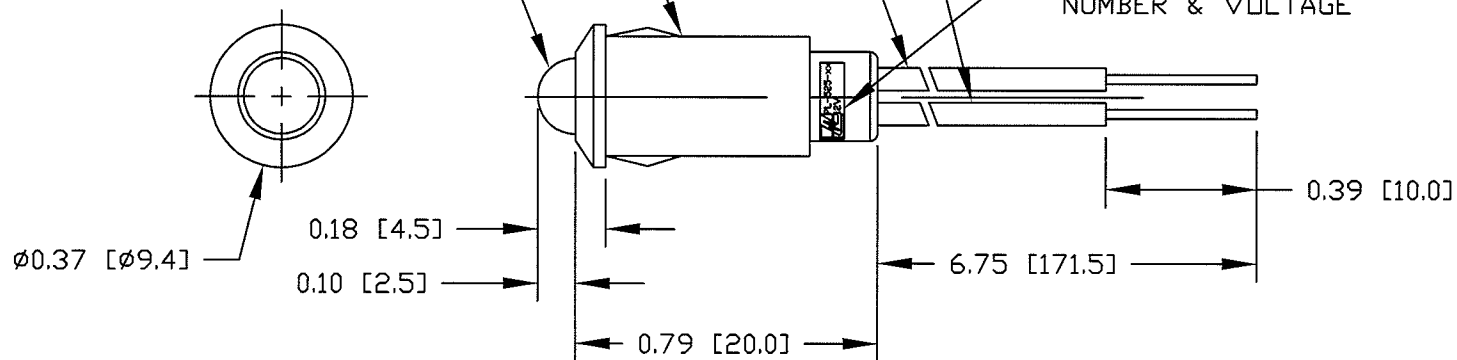
WIRE LEAD, 24 GA, [0.20 MM SQ],
PVC, YELLOW, UL-1007, NEGATIVE LEAD

WIRE LEAD, 24 GA, [0.20 MM SQ],
PVC, RED, UL-1007, POSITIVE LEAD

HOUSING, PLASTIC, BLACK

LENS, SEE CHART

LITTELFUSE LOGO, PART
NUMBER & VOLTAGE



- NOTES:
1. POLARITY SENSITIVE
 2. RATING: 12Vdc
 3. ILLUMINATION: 500 LUX

PL-525-RC	RED
PL-525-GC	GREEN
PL-525-AC	AMBER
PT NO	LENS & LED COLOR

Tolerances Unless otherwise specifically noted, the following are default tolerances;

2-places $\pm 0.02"$ **3-places** $\pm 0.005"$ **Angular** $\pm 1^\circ$

Metric: Shown in [] refers to equivalent English Dim Tol

"REF." or an Asterisk (*) = Non-Toleranced Reference Dimension, shown for clarification purposes only.

NOTE: All tolerances are Non-Cumulative.

PROPRIETARY INFORMATION

This Engineering Drawing, and the information contained herein, is proprietary to Cole Hersee Company and may not be disclosed, re-produced, or in any other way transferred or communicated to any other party without the express written consent of an authorized representative of Cole Hersee Company.

Special Characteristics:

- ☒ CC Critical Characteristic, relating to Safety and/or Regulatory Compliance
- ☒ X Significant Characteristic relating to Process Control
- ☒ KC Control Dimension relating to Form - Fit - Function as defined by Cole Hersee Company and/or the Customer



Cole Hersee Co.

20 Old Colony Ave., South Boston, MA, 02127
Phn: 617-268-2100 Web: www.colehersee.com

Description:

PILOT LIGHT, LED

Drawing /
Part No.:

PL-525

Current Rev.

A

FORM CHT-6 (2/07)

Used On
or Ref.: **EX28914**

Scale: 2:1

Drawn
BY: **DPS**

Date
Drawn: 9/27/11

Pg. 1 of 1

Revision Control Record

Rev.	Description of Change	ECN No.	Date
A	RELEASED DRAWING	11395	10/28/11

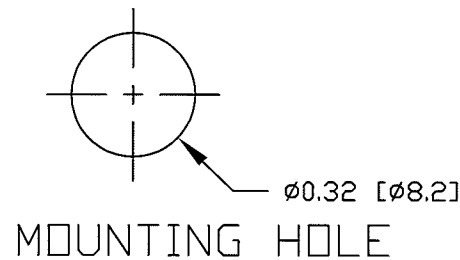
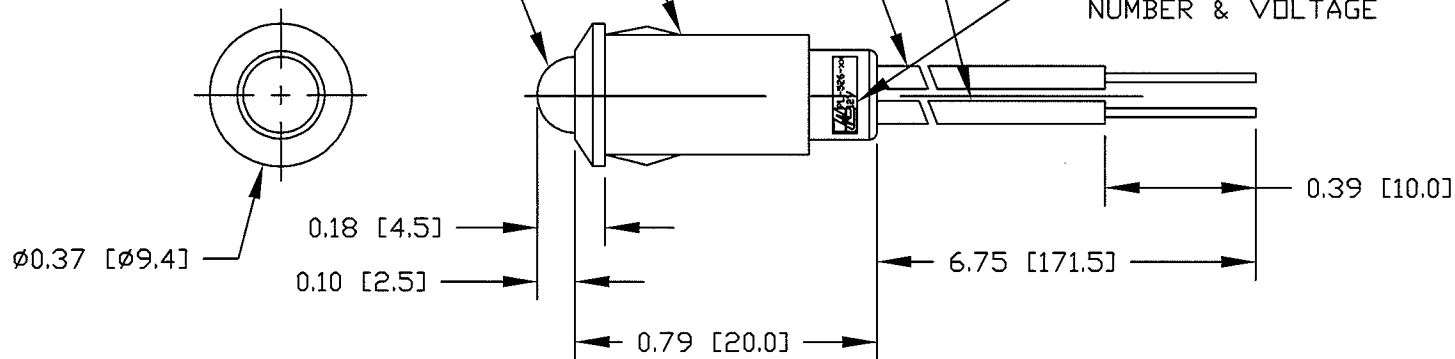
WIRE LEAD, 24 GA, [0.20 MM SQ],
PVC, YELLOW, UL-1007, NEGATIVE LEAD

WIRE LEAD, 24 GA, [0.20 MM SQ],
PVC, RED, UL-1007, POSITIVE LEAD

HOUSING, PLASTIC, BLACK

LENS, SEE CHART

LITTELFUSE LOGO, PART
NUMBER & VOLTAGE



NOTES:

1. POLARITY SENSITIVE
2. RATING: 12Vdc
3. ILLUMINATION: 500 LUX
3. BLINKING RATE: ~ 100/ MINUTE

PL-526-RC	RED
PL-526-GC	GREEN
PL-526-AC	AMBER
PT NO	LENS & LED COLOR

Tolerances Unless otherwise specifically noted, the following are default tolerances;

2-places **3-places** **Angular**
+/- 0.02" **+/- 0.005"** **+/- 1°**

Metric: Shown in [] refers to equivalent English Dim Tol

"REF." or an Asterisk (*) = Non-Toleranced Reference Dimension, shown for clarification purposes only.

NOTE: All tolerances are Non-Cumulative.

PROPRIETARY INFORMATION

This Engineering Drawing, and the information contained herein, is proprietary to Cole Hersee Company and may not be disclosed, re-produced, or in any other way transferred or communicated to any other party without the express written consent of an authorized representative of Cole Hersee Company.

Special Characteristics:

- ☒ **CC** Critical Characteristic, relating to Safety and/or Regulatory Compliance
- ☒ **X** Significant Characteristic relating to Process Control
- ☒ **KC** Control Dimension relating to Form - Fit - Function as defined by Cole Hersee Company and/or the Customer



Cole Hersee Co.

20 Old Colony Ave., South Boston, MA, 02127
Phn: 617-268-2100 Web: www.colehersee.com

Description:

**PILOT LIGHT
LED, BLINKING**

**Drawing /
Part No.:**

PL-526

Current Rev.

A

FORM CHT-6 (2/07)

Used On
or Ref.:

EX28915

Scale: 2:1

Drawn
BY:

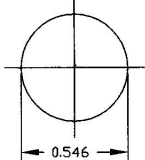
DPS

Date
Drawn:

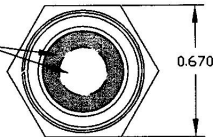
9/27/11

Pg. 1 of 1

MOUNTING HOLE



LENS, SEE CHART

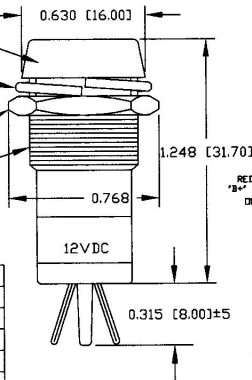


BEZEL, CHROME PLATED

WASHER

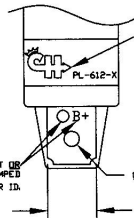
HEX NUT

THREAD: M14, P1.0



Revision Control Record

Rev.	Description of Change	ECN No.	Date
A	NEW PART	04302	08/18/04



CH LOGO,
PN & VOLT.

RED PAINT DOT OR
"B" METAL STAMPED
ON TERM. FOR ID.

Ø0.079 [2.01]

0.250 [6.35]

NOTES:

1. ALL DIMENSIONS ARE REFERENCE.
2. WASHER AND HEX NUT NICKEL PLATED.
3. PILOT LIGHT FITS UP TO .281" THICK PANEL

PL-612-R	RED	12V, LED
PL-612-G	GREEN	12V, LED
PL-612-B	BLUE	12V, LED
PL-612-A	AMBER	12V, LED
PT NO	LENS COLOR	BULB

Tolerances: Unless otherwise specifically noted, the following are default tolerances:
 * 3-place Decimal Dimensions $\pm .02"$
 * 3-place Decimal Dimensions $\pm .005"$
 * Angular Dimensions ± 1.0 Deg.
 * Metric: Refer to equivalent English Dimension Tolerance
 >>> NOTE: All tolerances are Non-Cumulative. <<<

Dimensional Units: All dimensions are expressed in inches except those shown in brackets (xxx) are expressed in millimeters.

"B" or an Arrow in "C": Non-Tolerance Reference Dimension, shown for identification purposes only.

PROPRIETARY INFORMATION: This Engineering Drawing, and the information contained herein, is proprietary to Cole Hersee Company and may not be disclosed, re-produced, or in any other way transferred or communicated to any other party without the express written consent of an authorized representative of Cole Hersee Company.

DESIGN CONTROL: It is the responsibility of the individual using / referencing this drawing to ensure that the noted design revision level agrees with the revision level of the Controlled Document (Master Drawing). This is a NON-CONTROLLED DOCUMENT unless otherwise specifically noted.

DO NOT SCALE: Dimensional variation may occur during printing / reproduction.

Special Characteristics:

- ☒ Critical Characteristic, relating to Safety and/or Regulatory Compliance
- ☒ Significant Characteristic relating to Process Control (APC)
- ☒ Key Characteristic relating to Form - Fit - Function as defined by Cole Hersee Company and/or the Customer

(Note that the identification of any Characteristics as being "Special" does not alter the requirement that ALL specified dimensions & tolerances must be met.)



Cole Hersee Co.

20 Old Colony Ave., South Boston, MA, 02127
Phs 617-288-2100 Web: www.colehersee.com

Description:

PILOT LIGHT, L.E.D

Drawing /
Part No.

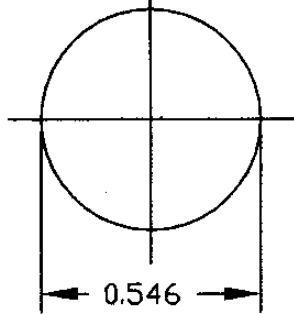
PL-612, CHART

Current Rev.

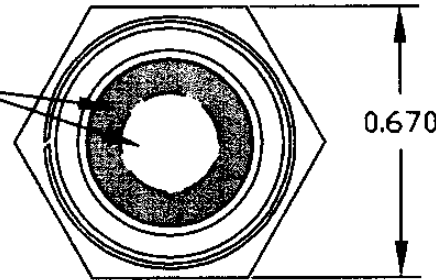
A

Used On or Ref:	Scale: 2:1	Drawn By: GA	Date Drawn: 04/14/04	Responsible Engineer: GA	Pg. 1 of 1
--------------------	-------------------	------------------------	--------------------------------	------------------------------------	------------

MOUNTING HOLE



LENS, SEE CHART



BEZEL, CHROME PLATED

WASHER

HEX NUT

THREAD: M14, P1.0

0.630 [16.00]

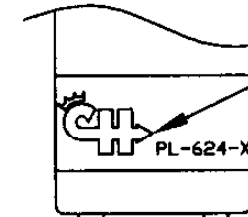
1.248 [31.70]

24VDC

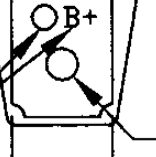
0.315 [8.00]±5

Revision Control Record

Rev.	Description of Change	ECN No.	Date
A	NEW PART	04302	08/17/04



CH LOGO,
PN & VOLT.



RED PAINT DOT OR
"B+" METAL STAMPED
ON TERM. FOR ID.

Ø0.079 [Ø2.01]

0.250 [6.35]

NOTES:

1. ALL DIMENSIONS ARE REFERENCE.
2. WASHER AND HEX NUT NICKEL PLATED.
3. PILOT LIGHT FITS UP TO .281" THICK PANEL

PL-624-R	RED	24V, LED
PL-624-G	GREEN	24V, LED
PL-624-B	BLUE	24V, LED
PL-624-A	AMBER	24V, LED
PT NO	LENS COLOR	BULB

Tolerances Unless otherwise specifically noted, the following are default tolerances:

- 2-place Decimal Dimensions: $\pm .02"$
- 3-place Decimal Dimensions: $\pm .005"$
- Angular Dimensions: ± 1.0 Deg.
- Metric: Refer to equivalent English Dimension Tolerance

>>> NOTE: All tolerances are Non-Cumulative. <<<

Dimensional Units All dimensions are expressed in inches except those shown in brackets (xxx) are expressed in millimeters

"REF." or an Asterisk (*) = Non-Toleranced Reference Dimension, shown for clarification purposes only.

PROPRIETARY INFORMATION This Engineering Drawing, and the information contained herein, is proprietary to Cole Hersee Company and may not be disclosed, reproduced, or in any other way transferred or communicated to any other party without the express written consent of an authorized representative of Cole Hersee Company.

DESIGN CONTROL It is the responsibility of the individual using / referencing this drawing to assure that the noted design revision level agrees with the revision level of the Controlled Document (Master Drawing). This is a NON-CONTROLLED DOCUMENT unless otherwise specifically noted.

DO NOT SCALE - Dimensional variation may occur during printing / reproduction.

Special Characteristics:



Critical Characteristic, relating to Safety and/or Regulatory Compliance



Significant Characteristic relating to Process Control (SPC)



Key Characteristic relating to Form - Fit - Function as defined by Cole Hersee Company and/or the Customer

(Note that the identification of any Characteristic as being "Special" does not alter the requirement that ALL specified dimensions & tolerances must be met.)



Cole Hersee Co.

20 Old Colony Ave., South Boston, MA, 02127
Phn 617-268-2100 Web: www.colehersee.com

Description:

PILOT LIGHT, L.E.D

Drawing /
Part No.:

PL- 624,CHART

Current Rev.

A

Used On
or Ref.:

Scale: **2:1**

Drawn By: **GA**

Date Drawn: **06/22/04**

Responsible Engineer: **GA**

Pg. 1 of 1