



## ICP Test Report Certification Packet

Company name: Littelfuse, Inc.

Product Series: Cover Puller

Product #: SPLxxxx Series

Issue Date: July 26, 2010

It is hereby certified by Littelfuse, Inc. that there is neither RoHS (EU Directive 2002/95/EC)-restricted substance nor such use, for materials to be used for unit parts, for packing/packaging materials, and for additives and the like in the manufacturing processes.

In addition, it is hereby reported to you that the parts and sub-materials, the materials to be used for unit parts, the packing/packaging materials, and the additives and the like in the manufacturing processes, are all composed of the following components.

Issued by:

\_\_\_\_\_  
<Global EHS Coordinator>

(1) Parts, sub-materials and unit parts

This document covers the Cover Puller RoHS-Compliant series products manufactured by Littelfuse, Inc.

< Raw Materials Used

Please see Table 1

(2) The ICP data on all measurable substances

Please see appropriate pages as identified in Table 1

Remarks :



**Table 1: List of Raw Materials covered by this report**

| <b>Total Parts</b> | <b>Raw Material Part Number</b> | <b>Raw Material Description</b> | <b>Page(s)</b> |
|--------------------|---------------------------------|---------------------------------|----------------|
| 1                  | 868-069                         | Fuseholder                      | 3-10           |



TEST REPORT

APPLICANT

Littelfuse, S.A. de C.V.
Poder Judicial No. 1005, Col. Burócratas, Piedras Negras, Coahuila, C.P. 26020
Berenice Casas / Mario Falcón

SAMPLE DESCRIPTION

One (1) group of submitted samples said to be :

- Sample Description NP
1) P/N: 902-122 Serie: L600XXX-XPQ
2) P/N: 903-117 Serie: L600XXX-XPQ
Item No. 4) P/N: 902-140 Serie L600XXX-XPQ
21) P/N: 868-069 Serie: L600XXX-XPQ

Country of Origin NP
Buyer's Name NP
Supplier's Name NP
Date sample received 2010-04-20
Testing period 2010-04-29 to 2009-05-22

\*\*\*\*\*

TEST CONDUCTED

As requested by the applicant, for details please refer to attached pages.

\*\*\*\*\*

CONCLUSION

Table with 5 columns: Item No., Testing item, Conclusion, Failed component, Failed result. Rows include items 1, 2, 4, and 21, all with 'Pass' conclusions.

\*\*\*\*\*

It is prohibited the total or partial reproduction of this document, as well as any modification or alteration in no of its parts without the previous authorization of Intertek Testing Services de México, S.A. de C.V. On the contrary Intertek reserves the right of coming from legal form against that (if is) they are responsible (s). The results that appear in this report belong solely to (s) shows (s) analyzed (s).



Report No.: MX10-0928-Serie L600XXX-XPQ

Date : 2010-05-31

**TEST CONDUCTED**

One (1) group of submitted samples said to be :

- 1) P/N: 902-122 Serie: L600XXX-XPQ
- 2) P/N: 903-117 Serie: L600XXX-XPQ
- 4) P/N: 902-140 Serie L600XXX-XPQ

**TEST RESULT SUMMARY FOR RoHS DIRECTIVE :**

| TESTING ITEM                      | Ω RESULT (ppm) |        |        | Limit #         |
|-----------------------------------|----------------|--------|--------|-----------------|
|                                   | (1)            | (2)    | (4)    |                 |
| Cadmium (Cd) content              | 58,493         | 25,093 | 15,321 | 0,01% (100 ppm) |
| Lead (Pb) content                 | 17,26          | 5,70   | 3,661  | 0,1% (1000 ppm) |
| Mercury (Hg) content              | ND             | ND     | ND     | 0,1% (1000 ppm) |
| Chromium (VI) (Cr <sup>6+</sup> ) | 0,210          | ND     | 0,043  | 0,1% (1000 ppm) |

It is prohibited the total or partial reproduction of this document, as well as any modification or alteration in no of its parts without the previous authorization of Intertek Testing Services de México, S.A. de C.V. On the contrary Intertek reserves the right of coming from legal form against that (it is) they are responsible (s).  
*The results that appear in this report belong solely to (s) shows (s) analyzed (s).*

**Intertek Testing Services de México, S.A. de C.V.**

Bldv. Manuel Ávila Camacho No. 182 Col. Lomas de Chapultepec  
C.P. 11650, México, D.F. Tel.: 50912150 Fax: 55407863

www.intertek.com

**TEST CONDUCTED**

One (1) group of submitted samples said to be :

21) P/N: 868-069 Serie: L600XXX-XPQ

**TEST RESULT SUMMARY FOR RoHS DIRECTIVE :**

| TESTING ITEM                                  | Ω RESULT (ppm) |  | Limit #         |
|-----------------------------------------------|----------------|--|-----------------|
|                                               | (21)           |  |                 |
| Cadmium (Cd) content                          | ND             |  | 0,01% (100 ppm) |
| Lead (Pb) content                             | 13,39          |  | 0,1% (1000 ppm) |
| Mercury (Hg) content                          | ND             |  | 0,1% (1000 ppm) |
| Chromium (VI) (Cr <sup>6+</sup> )             | ND             |  | 0,1% (1000 ppm) |
| <b>POLYBROMINATED BIPHENYLS (PBBs)</b>        | ND             |  | 0,1% (1000 ppm) |
| Monobromobiphenyl (MonoBB)                    | ND             |  | ---             |
| Dibromobiphenyl (DiBB)                        | ND             |  | ---             |
| Tribromobiphenyl (TriBB)                      | ND             |  | ---             |
| Tetrabromobiphenyl (TetraBB)                  | ND             |  | ---             |
| Pentabromobiphenyl (PentaBB)                  | ND             |  | ---             |
| Hexabromobiphenyl (HexaBB)                    | ND             |  | ---             |
| Heptabromobiphenyl (HeptaBB)                  | ND             |  | ---             |
| Octabromobiphenyl (OctaBB)                    | ND             |  | ---             |
| Nonabromobiphenyl (NonaBB)                    | ND             |  | ---             |
| Decabromobiphenyl (DecaBB)                    | ND             |  | ---             |
| <b>POLYBROMINATED DIPHENYL ETHERS (PBDEs)</b> | ND             |  | 0,1% (1000 ppm) |
| Monobromodiphenyl (MonoBDE)                   | ND             |  | ---             |
| Dibromodiphenyl (DiBDE)                       | ND             |  | ---             |
| Tribromodiphenyl (TriBDE)                     | ND             |  | ---             |
| Tetrabromodiphenyl (TetraBDE)                 | ND             |  | ---             |
| Pentabromodiphenyl (PentaBDE)                 | ND             |  | ---             |
| Hexabromodiphenyl (HexaBDE)                   | ND             |  | ---             |
| Heptabromodiphenyl (HeptaBDE)                 | ND             |  | ---             |
| Octabromodiphenyl (OctaBDE)                   | ND             |  | ---             |
| Nonabromodiphenyl (NonaBDE)                   | ND             |  | ---             |
| Decabromodiphenyl (DecaBDE)                   | ND             |  | ---             |



Report No.: MX10-0928-Serie L600XXX-XPQ

Date : 2010-05-31

ppm = parts per million based on dry weight of sample.  
µg/cm<sup>2</sup> = microgram per square centimeter.  
mg/kg WITH 50cm<sup>2</sup> = milligram per kilogram with 50 square centimeter.  
< = less than.

ND = Not detected.

The above limits were quoted from 2002/95/EC and amendment 2005/618/EC for homogeneous material.

These Accreditations only apply for the methods listed in such. Not accredited under EMA Ω.

P.A. Ma. de Jesús Moreno  
*[Signature]*

Prepared and checked by :

For Intertek

PA Maria T. Candalaria Morfey

*[Signature]*

Laboratory Manager

20100609

The Official Mexican Standard NOM-008-SCFI-1993 establishes like separator decimal the comma (,).

NOTE :DecaBDE IN POLYMERIC APPLICATIONS IS EXEMPTED ACCORDING TO ROHS DIRECTIVE AMENDMENT 2005/717/EC.

# =ACCORDING TO IEC 62321, A POSITIVE RESULT INDICATES THE PRESENCE OF Cr(VI) COATING. IT IS THE Cr(VI) CONCENTRATION DETECTED IN THE BOILING-WATER-EXTRACTION SOLUTION AND SHOULD NOT BE INTERPRETED AS THE Cr(VI) CONCENTRATION IN THE COATING LAYER OF THE SAMPLE.

REMARK: AS REQUESTED BY THE APPLICANT, COATING WITH BASE MATERIAL OF TESTED COMPONENTS OF THE SAMPLE MX10 928-1 WERE TESTED TOGETHER.

REMARK: AS REQUESTED BY THE APPLICANT, COATING WITH BASE MATERIAL OF TESTED COMPONENTS OF THE SAMPLE MX10 928-2 WERE TESTED TOGETHER.

REMARK: AS REQUESTED BY THE APPLICANT, COATING WITH BASE MATERIAL OF TESTED COMPONENTS OF THE SAMPLE MX10 928-4 WERE TESTED TOGETHER.

REMARK : AS REQUESTED BY THE APPLICANT, COATING WITH BASE MATERIAL OF TESTED COMPONENTS OF THE SAMPLE MX10 928-21 WERE TESTED TOGETHER.



It is prohibited the total or partial reproduction of this document, as well as any modification or alteration in no of its parts without the previous authorization of Intertek Testing Services de México, S.A. de C.V. On the contrary Intertek reserves the right of coming from legal form against that (it is) they are responsible (s).  
The results that appear in this report belong solely to (s) shows (s) analyzed (s).

**Intertek Testing Services de México, S.A. de C.V.**

Blvd. Manuel Ávila Camacho No. 182 Col. Lomas de Chapultepec  
C.P. 11650, México, D.F. Tel.: 50912150 Fax: 55407863

www.intertek.com

005  
*[Signature]*



Report No.: MX10-0928-Serie L600XXX-XPQ

Date : 2010-05-31

**Test method :**

| No. de Muestra | Testing item                         | Ω Testing method                                                                                                            | Quality control Batch: | Analysis Date:                               | Analyzed By: | Reporting limit ppm |
|----------------|--------------------------------------|-----------------------------------------------------------------------------------------------------------------------------|------------------------|----------------------------------------------|--------------|---------------------|
|                | Chromium (Cr <sup>6+</sup> ) content | With reference to USEPA Panasonic (HACH), by EPA Panasonic (HACH) (Sample 1,4)<br>With reference to USEPA 3060, by EPA 7196 | BAL827p85<br>BEQ160p5b | (Sample (1,4)<br>2010-05-04<br>2010-05-01,03 | MELA,JLHS    | 0,020<br>2,0        |

| No. de Muestra | Testing item                           | Ω Testing method     | Quality control Batch: | Analysis Date:           | Analyzed By: | Reporting limit ppm |
|----------------|----------------------------------------|----------------------|------------------------|--------------------------|--------------|---------------------|
|                | POLYBROMINATED BIPHENYLS (PBBs)        | Determined by GC-MSD | 2010-004440-P<br>CL    | 2010-04-28<br>2010-05-22 | CONT         | 50*                 |
|                | POLYBROMINATED DIPHENYL ETHERS (PBDEs) | Determined by GC-MSD | 2010-004440-P<br>CL    | 2010-04-28<br>2010-05-22 | CONT         | 50*                 |

| No. de Muestra | Testing item      | Ω Testing method                             | Quality control Batch: | Analysis Date: | Analyzed By: | Reporting limit ppm |
|----------------|-------------------|----------------------------------------------|------------------------|----------------|--------------|---------------------|
| 1              | Lead (Pb) content | With reference to USEPA 3050MOD, by EPA 7420 | MET2010-4p59           | 2010-04-29     | MARY,DCL     | 6,85                |
| 2              | Lead (Pb) content | With reference to USEPA 3050MOD, by EPA 7420 | MET2010-4p59           | 2010-04-29     | MARY,DCL     | 3,09                |
| 4              | Lead (Pb) content | With reference to USEPA 3050MOD, by EPA 7420 | MET2010-4p59           | 2010-04-29     | MARY,DCL     | 1,79                |
| 21             | Lead (Pb) content | With reference to USEPA 3052MOD, by EPA 6010 | MET2010-4p60           | 2010-04-29     | MARY,DCL     | 5,435               |

| No. de Muestra | Testing item         | Ω Testing method                             | Quality control Batch: | Analysis Date: | Analyzed By: | Reporting limit ppm |
|----------------|----------------------|----------------------------------------------|------------------------|----------------|--------------|---------------------|
| 1              | Cadmium (Cd) content | With reference to USEPA 3050MOD, by EPA 6010 | MET2010-4p59           | 2010-04-29     | MARY,DCL     | 1,369               |
| 2              | Cadmium (Cd) content | With reference to USEPA 3050MOD, by EPA 6010 | MET2010-4p59           | 2010-04-29     | MARY,DCL     | 0,617               |
| 4              | Cadmium (Cd) content | With reference to USEPA 3050MOD, by EPA 6010 | MET2010-4p59           | 2010-04-29     | MARY,DCL     | 0,357               |
| 21             | Cadmium (Cd) content | With reference to USEPA 3052MOD, by EPA 6010 | MET2010-4p60           | 2010-04-29     | MARY,DCL     | 2,174               |

| No. de Muestra | Testing item         | Ω Testing method                           | Quality control Batch: | Analysis Date: | Analyzed By: | Reporting limit ppm |
|----------------|----------------------|--------------------------------------------|------------------------|----------------|--------------|---------------------|
| 1              | Mercury (Hg) content | With reference to USEPA 7471 by USEPA 7471 | MET2010-4p61           | 2010-04-30     | UBM          | 0,0685              |
| 2              | Mercury (Hg) content | With reference to USEPA 7471 by USEPA 7471 | MET2010-4p61           | 2010-04-30     | UBM          | 0,0303              |
| 4              | Mercury (Hg) content | With reference to USEPA 7471 by USEPA 7471 | MET2010-4p61           | 2010-04-30     | UBM          | 0,0178              |
| 21             | Mercury (Hg) content | With reference to USEPA 7471 by USEPA 7471 | MET2010-8p2            | 2010-04-30     | UBM          | 0,082               |

It is prohibited the total or partial reproduction of this document, as well as any modification or alteration in no of its parts without the previous authorization of Intertek Testing Services de México, S.A. de C.V. On the contrary Intertek reserves the right of coming from legal form against that (it is) they are responsible (s).  
The results that appear in this report belong solely to (s) shows (s) analyzed (s).

**Intertek Testing Services de México, S.A. de C.V.**

Blvd. Manuel Ávila Camacho No. 182 Col. Lomas de Chapultepec  
C.P. 11650, México, D.F. Tel.: 50912150 Fax: 55407863

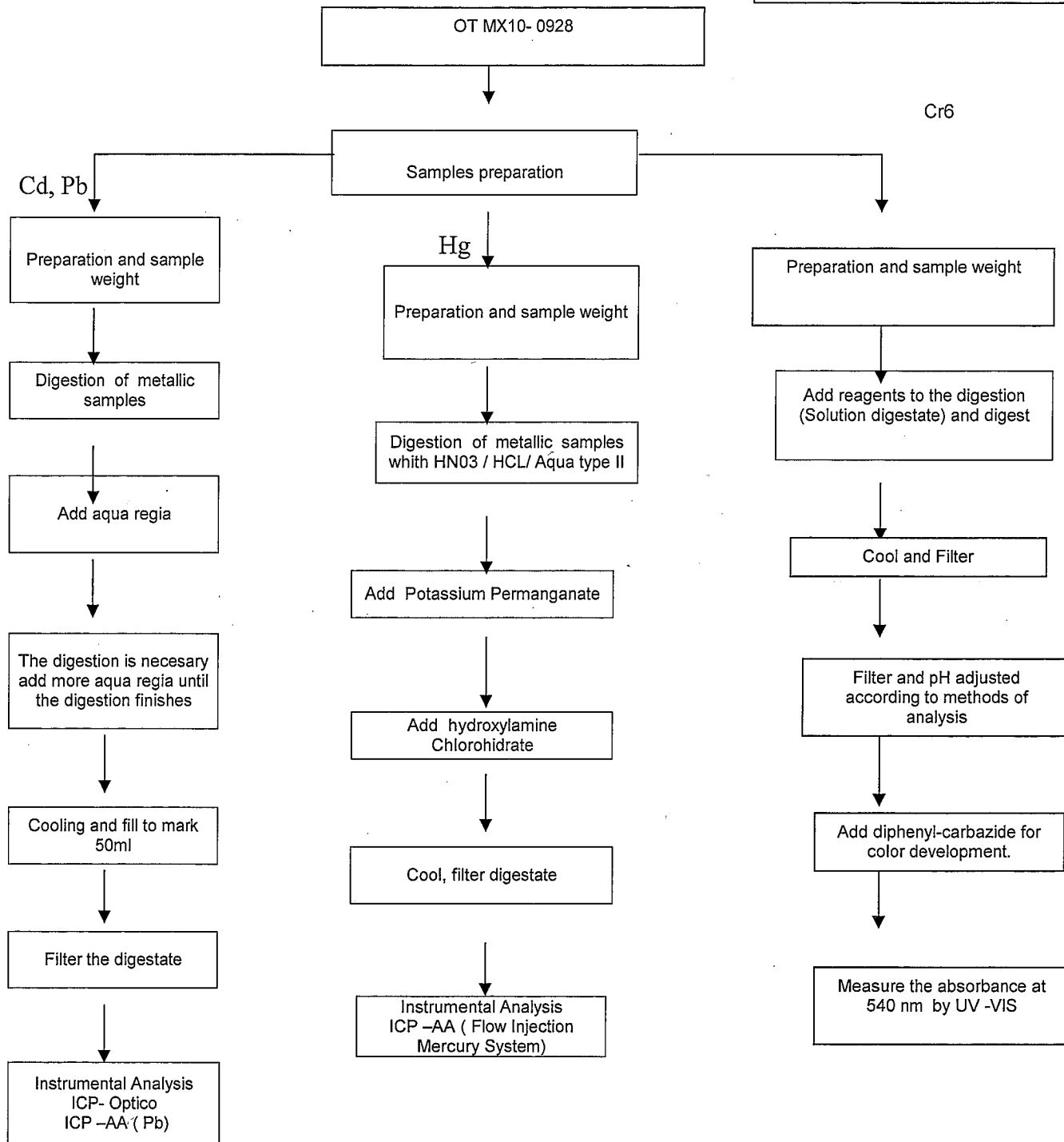
www.intertek.com

006



Report No.: MX10-0928  
Date: 2010-05-31

Metallic samples  
Flow chart for samples: 1, 2, 4



It is prohibited the total or partial reproduction of this document, as well as any modification or alteration in no of its parts without the previous authorization of Intertek Testing Services de México, S.A. de C.V. On the contrary Intertek reserves the right of coming from legal form against that (it is) they are responsible (s).  
*The results that appear in this report belong solely to (s) shows (s) analyzed (s).*

**Intertek Testing Services de México, S.A. de C.V.**

Bldv. Manuel Ávila Camacho No. 182 Col. Lomas de Chapultepec  
C.P. 11650, México, D.F. Tel.: 50912150 Fax: 55407863

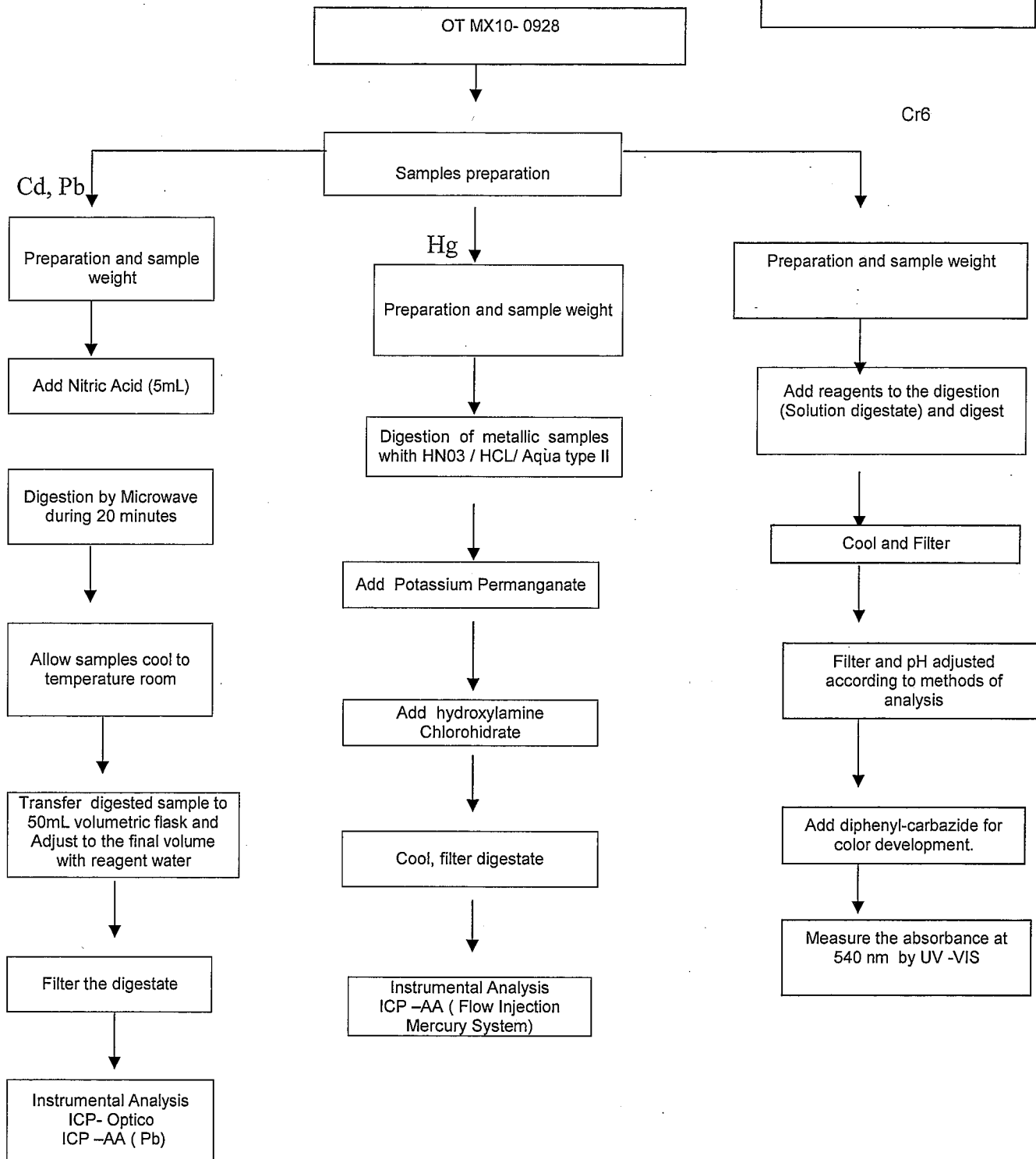
www.intertek.com





Report No.: MX10-0928  
Date: 2010-05-31

Plastic samples  
Flow chart for samples: 21



It is prohibited the total or partial reproduction of this document, as well as any modification or alteration in no of its parts without the previous authorization of Intertek Testing Services de México, S.A. de C.V. On the contrary Intertek reserves the right of coming from legal form against that (it is) they are responsible (s).  
*The results that appear in this report belong solely to (s) shows (s) analyzed (s).*

**Intertek Testing Services de México, S.A. de C.V.**

Bvd. Manuel Ávila Camacho No. 182 Col. Lomas de Chapultepec

C.P. 11650, México, D.F. Tel.: 50912150 Fax: 55407863

www.intertek.com

1ª. Emisión Junio 2005, 1ª Revisión Junio 26, 2009.

ILTA/003/GENS-F8

008

**MX10-0928-21**

