



ICP Test Report Certification Packet

Company name: Littelfuse, Inc.

Product Series: Nano2 Fuse FA, with Clip

Product #: 157 Series

Issue Date: November 13, 2013

It is hereby certified by Littelfuse, Inc. that there is neither RoHS (EU Directive 2002/95/EC, 2011/65/EU)-restricted substance nor such use, for materials to be used for unit parts, for packing/packaging materials, and for additives and the like in the manufacturing processes. In addition, it is hereby reported to you that the parts and sub-materials, the materials to be used for unit parts, the packing/packaging materials, and the additives and the like in the manufacturing processes, are all composed of the following components.

Issued by: 
JORDANUFF H. CABILAN

[Global EHS Engineer]

(1) Parts, sub-materials and unit parts

This document covers the Nano2 Fuse FA with Clip RoHS-Compliant series products manufactured by Littelfuse, Inc.

< Raw Materials Used

Please see Table 1

(2) The ICP data on all measurable substances

Please see appropriate pages as identified in Table 1

Remarks : .

Table 1: List of Raw Materials covered by this report

Total Parts	Raw Material Part Number	Raw Material Description	Page(s)
1	910-238	Cap	3-7
2	909-434	Body	8-36
3	082xxx	Wire-2% by weight Ag Clad Cu	37-40
4	082xxx	Wire-5% by weight Ag Clad Cu	41-44
5	497xxx	Wire-Ag Plated 36 Alloy	45-50
6	497xxx	Wire-Cu Clad Fe58 42Ni 5Ag by weight	51-56
7	692321	Solder	57-60
8	087266	HMA	61-70
9	425809	Ink	71-80
10	883-070	Clip	81-84



Test Report

Applicant: Littelfuse, Inc.
LIMA Technology Center, Lipa City,
Malvar, Batangas

Number : TWNC00300506

Date : Mar 07, 2013

Sample Description:

One (1) group of submitted samples said to be :
Part Description : Cap
Part Number : 910-238
Date Sample Received : Feb 26, 2013
Date Test Started : Feb 26, 2013

Test Conducted :

As requested by the applicant, for details please refer to attached pages.

Authorized by:
On Behalf of Intertek Testing Services
Taiwan Limited



K. Y. Liang
Director



Page 1 of 5

Intertek Testing Services Taiwan Ltd.

8F., No. 423, Ruiguang Rd., Neihu District, Taipei 11492, Taiwan, R.O.C.

全國公證檢驗股份有限公司

11492 台北市內湖區瑞光路 423 號 8 樓

Tel: (+886-2) 6602-2888 · 2797-8885 Fax: (+886-2) 6602-2410

Number : TWNC00300506

Test Conducted

(I) Test Result Summary:

Test Item	Unit	Test Method	Result		RL
			(1)	(2)	
Heavy Metal					
Cadmium (Cd) content	ppm	With reference to IEC 62321: 2008, by microwave digestion and determined by ICP-OES.	ND	ND	2
Lead (Pb) content	ppm	With reference to IEC 62321: 2008, by microwave digestion and determined by ICP-OES.	22	ND	2
Mercury (Hg) content	ppm	With reference to IEC 62321: 2008, by microwave digestion and determined by ICP-OES.	ND	ND	2
Chromium VI (Cr ⁶⁺) content	mg/kg with 50 cm ²	With reference to IEC 62321: 2008, by boiling water extraction and determined by UV-Vis Spectrophotometer.	Negative	Negative	0.02

Remarks: ppm = parts per million based on weight of tested sample = mg/kg
 ND = Not detected
 RL = Reporting Limit, Quantitation limit of analyte in sample
 mg/kg with 50cm² = milligram per kilogram with 50 square centimeter
 Negative = A negative test result indicated positive observation was not found at the time of Test.

Tested Components

- (1) Silvery metal cap
- (2) Silvery plating layer

Responsibility of Chemist: Kevin Liu/ Irene Chiou

Date Sample Received : Feb 26, 2013

Test Period : Feb 26, 2013 to Mar 04, 2013

(II) Limit:

RoHS Limit

<u>Restricted Substances</u>	<u>Limits</u>
Cadmium (Cd) content	0.01% (100ppm)
Lead (Pb) content	0.1% (1000ppm)
Mercury (Hg) content	0.1% (1000ppm)
Chromium VI (Cr ⁶⁺) content	0.1% (1000ppm)

The above limits were quoted from Annex II of 2011/65/EU for homogeneous material.



Page 2 of 5

Intertek Testing Services Taiwan Ltd.

8F., No. 423, Ruiguang Rd., Neihu District, Taipei 11492, Taiwan, R.O.C.

全國公證檢驗股份有限公司

11492 台北市內湖區瑞光路 423 號 8 樓

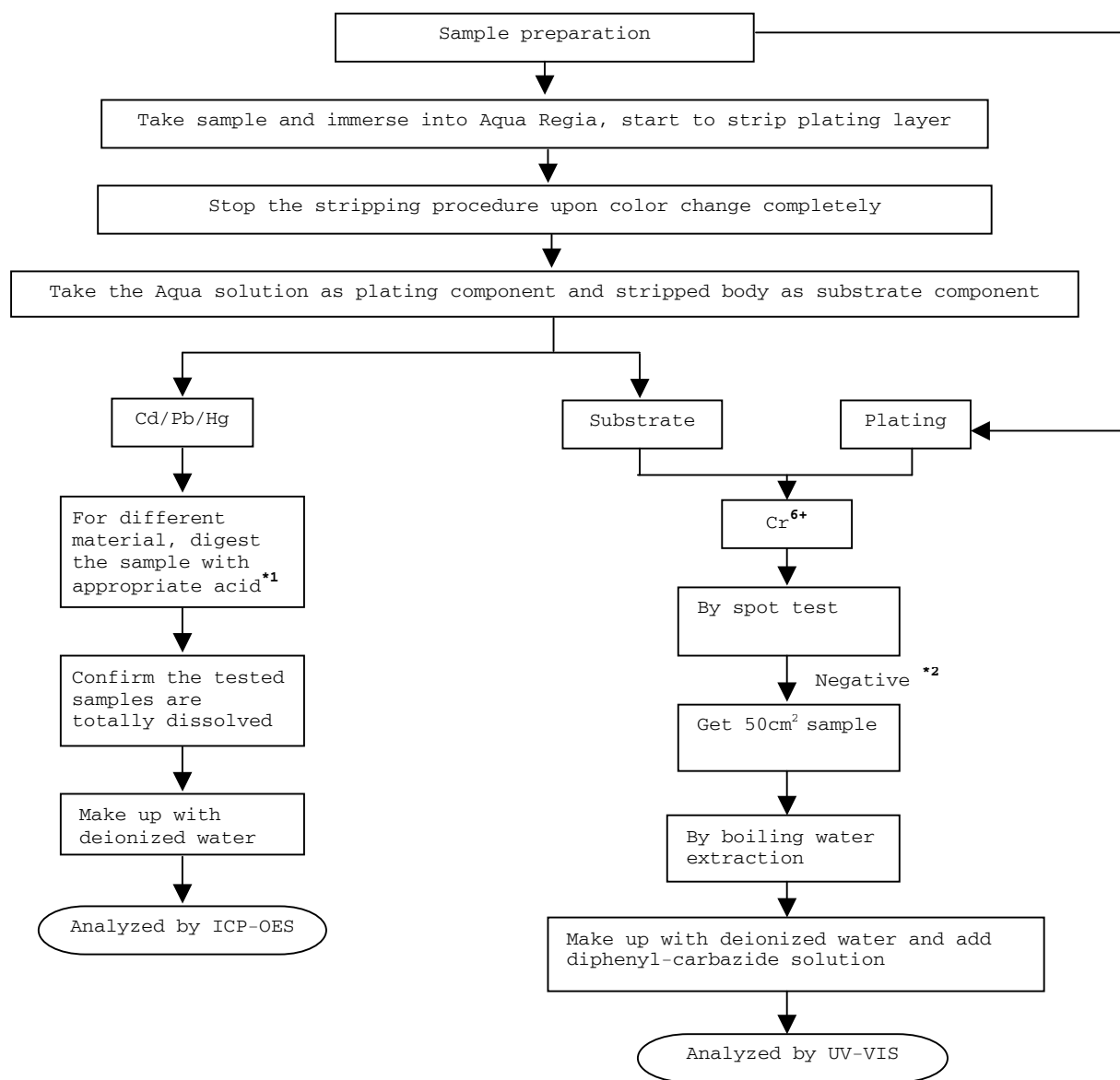
Tel: (+886-2) 6602-2888 · 2797-8885 Fax: (+886-2) 6602-2410

Test Conducted

(III) Measurement Flowchart:

Test For Cd/Pb/Hg/Chromium (VI)

Reference Standard: IEC 62321 edition 1.0:2008





Number : TWNC00300506

Test Conducted

Remarks:

*1: List Of Appropriate Acid:

<u>Material</u>	<u>Acid Added For Digestion</u>
Polymers	HNO ₃ , HCl, HF, H ₂ O ₂ , H ₃ BO ₃
Metals	HNO ₃ , HCl, HF
Electronics	HNO ₃ , HCl, H ₂ O ₂ , HBF ₄

*2: If the result of spot test is positive, Chromium VI would be determined as detected.

End of Report

This report is made solely on the basis of your instructions and/or information and materials supplied by you. It is not intended to be a recommendation for any particular course of action. Intertek does not accept a duty of care or any other responsibility to any person other than the Client in respect of this report and only accepts liability to the Client insofar as is expressly contained in the terms and conditions governing Intertek's provision of services to you. Intertek makes no warranties or representations either express or implied with respect to this report save as provided for in those terms and conditions. We have aimed to conduct the Review on a diligent and careful basis and we do not accept any liability to you for any loss arising out of or in connection with this report, in contract, tort, by statute or otherwise, except in the event of our gross negligence or wilful misconduct.



Page 4 of 5

Intertek Testing Services Taiwan Ltd.

8F., No. 423, Ruiguang Rd., Neihu District, Taipei 11492, Taiwan, R.O.C.

全國公證檢驗股份有限公司

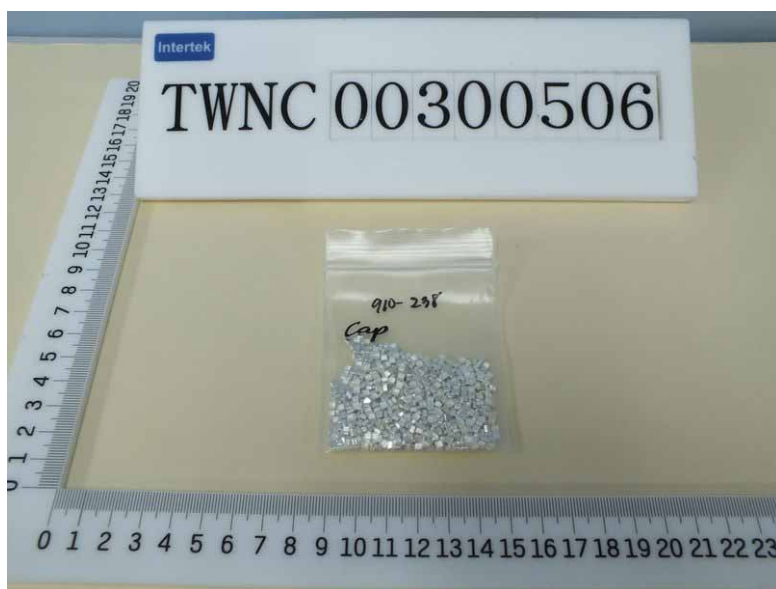
11492 台北市內湖區瑞光路 423 號 8 樓

Tel: (+886-2) 6602-2888 · 2797-8885 Fax: (+886-2) 6602-2410

Test Conducted

Number : TWNC00300506

Photo



Test Report

No. : CE/2013/13196 Date : 2013/01/22 Page : 1 of 29

CERAMTEC GMBH

GESCHAFTSBEREICH MULTIFUNKTIONSKERAMIK, LUITPOLDSTRABE 15, 91207 LAUF



The following sample(s) was/were submitted and identified by/on behalf of the client as:

Sample Description : CERAMIC
Style/Item No. : FREQUENTA C221
Sample Receiving Date : 2013/1/14
Testing Period : 2013/1/14 TO 2013/01/22

=====

Test Result(s) : Please refer to next page(s).

Conclusion : Based on the performed tests on submitted samples, the test results of Cadmium, Lead, Mercury, Hexavalent Chromium Cr(VI), PBBs and PBDEs comply with the limits as set by RoHS Directive 2011/65/EU Annex II; recasting 2002/95/EC.


Chenyu Kung / Operation Manager
Signed for and on behalf of
SGS TAIWAN LTD.
Chemical Laboratory – Taipei

Unless otherwise stated the results shown in this test report refer only to the sample(s) tested. This test report cannot be reproduced, except in full, without prior written permission of the Company. 除非另有說明，此報告結果僅對測試之樣品負責。本報告未經本公司書面許可，不得部分複製。
This document is issued by the Company subject to its General Conditions of Service printed overleaf, available on request or accessible at www.sgs.com/terms_and_conditions.htm
and, for electronic format documents, subject to Terms and Conditions for Electronic Documents at www.sgs.com/en/Terms-and-Conditions/Terms-e-Document. Attention is drawn to the limitation of liability, indemnification and jurisdiction issues defined therein. Any holder of this document is advised that information contained hereon reflects the Company's findings at the time of its intervention only and within the limits of Client's instructions, if any. The Company's sole responsibility is to its Client and this document does not exonerate parties to a transaction from exercising all their rights and obligations under the transaction documents. This document cannot be reproduced except in full, without prior written approval of the Company. Any unauthorized alteration, forgery or falsification of the content or appearance of this document is unlawful and offenders may be prosecuted to the fullest extent of the law.

Test Report

No. : CE/2013/13196 Date : 2013/01/22 Page : 2 of 29

CERAMTEC GMBH

GESCHAFTSBEREICH MULTIFUNKTIONSKERAMIK, LUITPOLDSTRASSE 15, 91207 LAUF



Test Result(s)

PART NAME No.1 : CREAM CERAMIC

Test Item(s)	Unit	Method	MDL	Result	Limit
				No.1	
Cadmium (Cd)	mg/kg	With reference to IEC 62321: 2008 and performed by ICP-AES.	2	n.d.	100
Lead (Pb)	mg/kg	With reference to IEC 62321: 2008 and performed by ICP-AES.	2	n.d.	1000
Mercury (Hg)	mg/kg	With reference to IEC 62321: 2008 and performed by ICP-AES.	2	n.d.	1000
Hexavalent Chromium Cr(VI)	mg/kg	With reference to IEC 62321: 2008 and performed by UV-VIS.	2	n.d.	1000
BBP (Benzyl butyl phthalate) (CAS No.: 85-68-7)	%	With reference to EN 14372. Analysis was performed by GC/MS.	0.003	n.d.	-
DEHP (Di- (2-ethylhexyl) phthalate) (CAS No.: 117-81-7)	%	With reference to EN 14372. Analysis was performed by GC/MS.	0.003	n.d.	-
DIDP (Di-isodecyl phthalate) (CAS No.: 26761-40-0)	%	With reference to EN 14372. Analysis was performed by GC/MS.	0.01	n.d.	-
DINP (Di-isononyl phthalate) (CAS No.: 28553-12-0)	%	With reference to EN 14372. Analysis was performed by GC/MS.	0.01	n.d.	-
DNOP (Di-n-octyl phthalate) (CAS No.: 117-84-0)	%	With reference to EN 14372. Analysis was performed by GC/MS.	0.003	n.d.	-
DBP (Dibutyl phthalate) (CAS No.: 84-74-2)	%	With reference to EN 14372. Analysis was performed by GC/MS.	0.003	n.d.	-
Perfluorooctane sulfonates (PFOS-Acid, Metal Salt, Amide)	mg/kg	With reference to US EPA 3550C: 2007. Analysis was performed by LC/MS.	10	n.d.	-
PFOA (CAS No.: 335-67-1)	mg/kg	With reference to US EPA 3550C: 2007. Analysis was performed by LC/MS.	10	n.d.	-
Polychlorinated Biphenyls (PCBs) (CAS No.: 1336-36-3)	mg/kg	With reference to US EPA 3540C method. Analysis was performed by GC/MS.	0.5	n.d.	-

Unless otherwise stated the results shown in this test report refer only to the sample(s) tested. This test report cannot be reproduced, except in full, without prior written permission of the Company. 除非另有說明，此報告結果僅對測試之樣品負責，未經本公司書面許可，不可部分複製。 This document is issued by the Company subject to its General Conditions of Service printed overleaf, available on request or accessible at www.sgs.com/terms_and_conditions.htm and, for electronic format documents, subject to Terms and Conditions for Electronic Documents at www.sgs.com/en/Terms-and-Conditions/Terms-e-Document. Attention is drawn to the limitation of liability, indemnification and jurisdiction issues defined therein. Any holder of this document is advised that information contained hereon reflects the Company's findings at the time of its intervention only and within the limits of Client's instructions, if any. The Company's sole responsibility is to its Client and this document does not exonerate parties to a transaction from exercising all their rights and obligations under the transaction documents. This document cannot be reproduced except in full, without prior written approval of the Company. Any unauthorized alteration, forgery or falsification of the content or appearance of this document is unlawful and offenders may be prosecuted to the fullest extent of the law.

Test Report

No. : CE/2013/13196 Date : 2013/01/22 Page : 3 of 29

CERAMTEC GMBH

GESCHAFTSBEREICH MULTIFUNKTIONSKERAMIK, LUITPOLDSTRABE 15, 91207 LAUF



Test Item(s)	Unit	Method	MDL	Result	Limit
				No.1	
Polychlorinated Terphenyls (PCTs)	mg/kg	With reference to US EPA 3540C method. Analysis was performed by GC/MS.	0.5	n.d.	-
Polychlorinated Naphthalene (PCNs)	mg/kg	With reference to US EPA 3540C method. Analysis was performed by GC/MS.	5	n.d.	-
Alkanes, C10-13, chloro (Short Chain Chlorinated Paraffins) (CAS No.: 85535-84-8)	mg/kg	With reference to US EPA 3540C method. Analysis was performed by GC/MS.	100	n.d.	-
PVC	**	Analysis was performed by FTIR and FLAME Test.	-	Negative	-
Formaldehyde (CAS No.: 50-00-0)	mg/kg	With reference to ISO 17226-1(2008). Analysis was performed by HPLC/DAD.	3	n.d.	-
Monomethyl dibromodiphenyl methane (DBBT)	mg/kg	With reference to US EPA 8270D method. Analysis was performed by GC/MS.	0.5	n.d.	-
Monomethyl dichlorodiphenyl methane (Ugilec121)	mg/kg	With reference to US EPA 8270D method. Analysis was performed by GC/MS.	0.5	n.d.	-
Monomethyl tetrachlorodiphenyl methane (Ugilec141)	mg/kg	With reference to US EPA 8270D method. Analysis was performed by GC/MS.	0.5	n.d.	-
Halogen					
Halogen-Fluorine (F) (CAS No.: 14762-94-8)	mg/kg	With reference to BS EN 14582:2007. Analysis was performed by IC.	50	n.d.	-
Halogen-Chlorine (Cl) (CAS No.: 22537-15-1)	mg/kg		50	n.d.	-
Halogen-Bromine (Br) (CAS No.: 10097-32-2)	mg/kg		50	n.d.	-
Halogen-Iodine (I) (CAS No.: 14362-44-8)	mg/kg		50	n.d.	-
Organic-tin compounds					
Tributyl Tin (TBT)	mg/kg	With reference to DIN 38407-13.	0.03	n.d.	-
Triphenyl Tin (TphT)	mg/kg	Analysis was performed by GC/FPD.	0.03	n.d.	-

Unless otherwise stated the results shown in this test report refer only to the sample(s) tested. This test report cannot be reproduced, except in full, without prior written permission of the Company. 除非另有說明，此報告結果僅針對測試之樣品負責。本報告未經本公司書面許可，不可部分複製。
This document is issued by the Company subject to its General Conditions of Service printed overleaf, available on request or accessible at www.sgs.com/terms_and_conditions.htm. This document is issued by the Company subject to its General Conditions of Service printed overleaf, available on request or accessible at www.sgs.com/terms_and_conditions.htm. Attention is drawn to the and, for electronic format documents, subject to Terms and Conditions for Electronic Documents at www.sgs.com/en/Terms-and-Conditions/Terms-e-Documents. Attention is drawn to the limitation of liability, indemnification and jurisdiction issues defined therein. Any holder of this document is advised that information contained hereon reflects the Company's findings at the time of its intervention only and within the limits of Client's instructions, if any. The Company's sole responsibility is to its Client and this document does not exonerate parties to a transaction from exercising all their rights and obligations under the transaction documents. This document cannot be reproduced except in full, without prior written approval of the Company. Any unauthorized alteration, forgery or falsification of the content or appearance of this document is unlawful and offenders may be prosecuted to the fullest extent of the law.

Test Report

No. : CE/2013/13196 Date : 2013/01/22 Page : 4 of 29

CERAMTEC GMBH

GESCHAFTSBEREICH MULTIFUNKTIONSKERAMIK, LUITPOLDSTRABE 15, 91207 LAUF



Test Item(s)	Unit	Method	MDL	Result	Limit
				No.1	
Asbestos					
Actinolite (CAS No.: 77536-66-4)	%	With reference to EPA 600/R-93/116 method. Analysis was performed by Stereo Microscope (SM), Dispersion Staining Polarized Light Microscope (DS-PLM) and X-ray Diffraction Spectrometer (XRD).	-	Negative	-
Amosite (CAS No.: 12172-73-5)	%		-	Negative	-
Anthophyllite (CAS No.: 77536-67-5)	%		-	Negative	-
Chrysotile (CAS No.: 12001-29-5)	%		-	Negative	-
Crocidolite (CAS No.: 12001-28-4)	%		-	Negative	-
Tremolite (CAS No.: 77536-68-6)	%		-	Negative	-
AZO					
1): 4-AMINODIPHENYL (CAS No.: 92-67-1)	mg/kg	With reference to LFGB 82.02-2. Analysis was performed by GC/MS.	3	n.d.	-
2): BENZIDINE (CAS No.: 92-87-5)	mg/kg	With reference to LFGB 82.02-2. Analysis was performed by GC/MS.	3	n.d.	-
3): 4-CHLORO-O-TOLUIDINE (CAS No.: 95-69-2)	mg/kg	With reference to LFGB 82.02-2. Analysis was performed by GC/MS.	3	n.d.	-
4): 2-NAPHTHYLAMINE (CAS No.: 91-59-8)	mg/kg	With reference to LFGB 82.02-2. Analysis was performed by GC/MS.	3	n.d.	-
5): O-AMINOAZOTOLUENE (CAS No.: 97-56-3)	mg/kg	With reference to LFGB 82.02-2. Analysis was performed by GC/MS.	3	n.d.	-
6): 2-AMINO-4-NITROTOLUENE (CAS No.: 99-55-8)	mg/kg	With reference to LFGB 82.02-2. Analysis was performed by GC/MS.	3	n.d.	-
7): P-CHLOROANILINE (CAS No.: 106-47-8)	mg/kg	With reference to LFGB 82.02-2. Analysis was performed by GC/MS.	3	n.d.	-
8): 2,4-DIAMINOANISOLE (CAS No.: 615-05-4)	mg/kg	With reference to LFGB 82.02-2. Analysis was performed by GC/MS.	3	n.d.	-
9): 4,4'-DIAMINODIPHENYLMETHANE (CAS No.: 101-77-9)	mg/kg	With reference to LFGB 82.02-2. Analysis was performed by GC/MS.	3	n.d.	-
10): 3,3'-DICHLOROBENZIDINE (CAS No.: 91-94-1)	mg/kg	With reference to LFGB 82.02-2. Analysis was performed by GC/MS.	3	n.d.	-
11): 3,3'-DIMETHOXYBENZIDINE (CAS No.: 119-90-4)	mg/kg	With reference to LFGB 82.02-2. Analysis was performed by GC/MS.	3	n.d.	-
12): 3,3'-DIMETHYLBENZIDINE (CAS No.: 119-93-7)	mg/kg	With reference to LFGB 82.02-2. Analysis was performed by GC/MS.	3	n.d.	-

Unless otherwise stated the results shown in this test report refer only to the sample(s) tested. This test report cannot be reproduced, except in full, without prior written permission of the Company. 除非另有說明，此報告結果僅對測試之樣品負責。本報告未經本公司書面許可，不可部分複製。
This document is issued by the Company subject to its General Conditions of Service printed overleaf, available on request or accessible at www.sgs.com/terms_and_conditions.htm and, for electronic format documents, subject to Terms and Conditions for Electronic Documents at www.sgs.com/en/Terms-and-Conditions/Terms-e-Document. Attention is drawn to the limitation of liability, indemnification and jurisdiction issues defined therein. Any holder of this document is advised that information contained hereon reflects the Company's findings at the time of its intervention only and within the limits of Client's instructions, if any. The Company's sole responsibility is to its Client and this document does not exonerate parties to a transaction from exercising all their rights and obligations under the transaction documents. This document cannot be reproduced except in full, without prior written approval of the Company. Any unauthorized alteration, forgery or falsification of the content or appearance of this document is unlawful and offenders may be prosecuted to the fullest extent of the law.

Test Report

No. : CE/2013/13196 Date : 2013/01/22 Page : 5 of 29

CERAMTEC GMBH

GESCHAFTSBEREICH MULTIFUNKTIONSKERAMIK, LUITPOLDSTRABE 15, 91207 LAUF



Test Item(s)	Unit	Method	MDL	Result	Limit
				No.1	
13): 3,3'-DIMETHYL-4,4'-DIAMINODIPHENYLMETHANE (CAS No.: 838-88-0)	mg/kg	With reference to LFGB 82.02-2. Analysis was performed by GC/MS.	3	n.d.	-
14): P-CRESIDINE (2-METHOXY-5-METHYLANILINE) (CAS No.: 120-71-8)	mg/kg	With reference to LFGB 82.02-2. Analysis was performed by GC/MS.	3	n.d.	-
15): 4,4'-METHYLENE-BIS- (2-CHLOROANILINE) (CAS No.: 101-14-4)	mg/kg	With reference to LFGB 82.02-2. Analysis was performed by GC/MS.	3	n.d.	-
16): 4,4'-OXYDIANILINE (CAS No.: 101-80-4)	mg/kg	With reference to LFGB 82.02-2. Analysis was performed by GC/MS.	3	n.d.	-
17): 4,4'-THIODIANILINE (CAS No.: 139-65-1)	mg/kg	With reference to LFGB 82.02-2. Analysis was performed by GC/MS.	3	n.d.	-
18): O-TOLUIDINE (CAS No.: 95-53-4)	mg/kg	With reference to LFGB 82.02-2. Analysis was performed by GC/MS.	3	n.d.	-
19): 2,4-TOLUYLENEDIAMINE (CAS No.: 95-80-7)	mg/kg	With reference to LFGB 82.02-2. Analysis was performed by GC/MS.	3	n.d.	-
20): 2,4,5-TRIMETHYLANILINE (CAS No.: 137-17-7)	mg/kg	With reference to LFGB 82.02-2. Analysis was performed by GC/MS.	3	n.d.	-
21): O-ANISIDINE (CAS No.: 90-04-0)	mg/kg	With reference to LFGB 82.02-2. Analysis was performed by GC/MS.	3	n.d.	-
22): P-AMINOAZOBENZENE (CAS No.: 60-09-3)	mg/kg	With reference to LFGB 82.02-2. Analysis was performed by GC/MS.	3	n.d.	-
23): 2,4-XYLIDINE (CAS No.: 95-68-1)	mg/kg	With reference to LFGB 82.02-2. Analysis was performed by GC/MS.	3	n.d.	-
24): 2,6-XYLIDINE (CAS No.: 87-62-7)	mg/kg	With reference to LFGB 82.02-2. Analysis was performed by GC/MS.	3	n.d.	-
CFC's (Chlorofluorocarbons)					
Group I					
Chlorofluorocarbon-11 (CAS No.: 75-69-4)	mg/kg	With reference to US EPA 5021 method. Analysis was performed by GC/MS.	1	n.d.	-
Chlorofluorocarbon-12 (CAS No.: 75-71-8)	mg/kg	With reference to US EPA 5021 method. Analysis was performed by GC/MS.	1	n.d.	-

Unless otherwise stated the results shown in this test report refer only to the sample(s) tested. This test report cannot be reproduced, except in full, without prior written permission of the Company. 除非另有說明，此報告結果僅對測試之樣品負責。本報告未經本公司書面許可，不可部分複製。

This document is issued by the Company subject to its General Conditions of Service printed overleaf, available on request or accessible at www.sgs.com/terms_and_conditions.htm. This document is also subject to Terms and Conditions for Electronic Documents at www.sgs.com/en/Terms-and-Conditions/Terms-e-Document. Attention is drawn to the and, for electronic format documents, subject to Terms and Conditions for Electronic Documents at www.sgs.com/en/Terms-and-Conditions/Terms-e-Document. Attention is drawn to the limitation of liability, indemnification and jurisdiction issues defined therein. Any holder of this document is advised that information contained hereon reflects the Company's findings at the time of its intervention only and within the limits of Client's instructions, if any. The Company's sole responsibility is to its Client and this document does not exonerate parties to a transaction from exercising all their rights and obligations under the transaction documents. This document cannot be reproduced except in full, without prior written approval of the Company. Any unauthorized alteration, forgery or falsification of the content or appearance of this document is unlawful and offenders may be prosecuted to the fullest extent of the law.

Test Report

No. : CE/2013/13196 Date : 2013/01/22 Page : 6 of 29

CERAMTEC GMBH

GESCHAFTSBEREICH MULTIFUNKTIONSKERAMIK, LUITPOLDSTRABE 15, 91207 LAUF



Test Item(s)	Unit	Method	MDL	Result	Limit
				No.1	
Chlorofluorocarbon-113 (CAS No.: 76-13-1)	mg/kg	With reference to US EPA 5021 method. Analysis was performed by GC/MS.	1	n.d.	-
Chlorofluorocarbon-114 (CAS No.: 76-14-2)	mg/kg	With reference to US EPA 5021 method. Analysis was performed by GC/MS.	1	n.d.	-
Chlorofluorocarbon-115 (CAS No.: 76-15-3)	mg/kg	With reference to US EPA 5021 method. Analysis was performed by GC/MS.	1	n.d.	-
Group III					
Chlorofluorocarbon-13 (CAS No.: 75-72-9)	mg/kg	With reference to US EPA 5021 method. Analysis was performed by GC/MS.	1	n.d.	-
Chlorofluorocarbon-111 (CAS No.: 354-56-3)	mg/kg	With reference to US EPA 5021 method. Analysis was performed by GC/MS.	1	n.d.	-
Chlorofluorocarbon-112 (CAS No.: 76-12-0)	mg/kg	With reference to US EPA 5021 method. Analysis was performed by GC/MS.	1	n.d.	-
Chlorofluorocarbon-211 (CAS No.: 422-78-6)	mg/kg	With reference to US EPA 5021 method. Analysis was performed by GC/MS.	1	n.d.	-
Chlorofluorocarbon-212 (CAS No.: 3182-26-1)	mg/kg	With reference to US EPA 5021 method. Analysis was performed by GC/MS.	1	n.d.	-
Chlorofluorocarbon-213 (CAS No.: 2354-06-5)	mg/kg	With reference to US EPA 5021 method. Analysis was performed by GC/MS.	1	n.d.	-
Chlorofluorocarbon-214 (CAS No.: 29255-31-0)	mg/kg	With reference to US EPA 5021 method. Analysis was performed by GC/MS.	1	n.d.	-
Chlorofluorocarbon-215 (CAS No.: 4259-43-2)	mg/kg	With reference to US EPA 5021 method. Analysis was performed by GC/MS.	1	n.d.	-

Unless otherwise stated the results shown in this test report refer only to the sample(s) tested. This test report cannot be reproduced, except in full, without prior written permission of the Company. 除非另有說明，此報告結果僅對測試之樣品負責。本報告未經本公司書面許可，不可部分複製。

This document is issued by the Company subject to its General Conditions of Service printed overleaf, available on request or accessible at www.sgs.com/terms_and_conditions.htm and, for electronic format documents, subject to Terms and Conditions for Electronic Documents at www.sgs.com/en/Terms-and-Conditions/Terms-e-Document. Attention is drawn to the limitation of liability, indemnification and jurisdiction issues defined therein. Any holder of this document is advised that information contained hereon reflects the Company's findings at the time of its intervention only and within the limits of Client's instructions, if any. The Company's sole responsibility is to its Client and this document does not exonerate parties to a transaction from exercising all their rights and obligations under the transaction documents. This document cannot be reproduced except in full, without prior written approval of the Company. Any unauthorized alteration, forgery or falsification of the content or appearance of this document is unlawful and offenders may be prosecuted to the fullest extent of the law.

Test Report

No. : CE/2013/13196 Date : 2013/01/22 Page : 7 of 29

CERAMTEC GMBH

GESCHAFTSBEREICH MULTIFUNKTIONSKERAMIK, LUITPOLDSTRABE 15, 91207 LAUF



Test Item(s)	Unit	Method	MDL	Result	Limit
				No.1	
Chlorofluorocarbon-216 (CAS No.: 661-97-2)	mg/kg	With reference to US EPA 5021 method. Analysis was performed by GC/MS.	1	n.d.	-
Chlorofluorocarbon-217 (CAS No.: 422-86-6)	mg/kg	With reference to US EPA 5021 method. Analysis was performed by GC/MS.	1	n.d.	-
HCFCs (Hydrochlorofluorocarbons)					
HCFC-21 (CAS No.: 75-43-4)	mg/kg	With reference to US EPA 5021 method. Analysis was performed by GC/MS.	1	n.d.	-
HCFC-22 (CAS No.: 75-45-6)	mg/kg	With reference to US EPA 5021 method. Analysis was performed by GC/MS.	1	n.d.	-
HCFC-31 (CAS No.: 593-70-4)	mg/kg	With reference to US EPA 5021 method. Analysis was performed by GC/MS.	1	n.d.	-
HCFC-121 (CAS No.: 354-14-3)	mg/kg	With reference to US EPA 5021 method. Analysis was performed by GC/MS.	1	n.d.	-
HCFC-122 (CAS No.: 354-21-2)	mg/kg	With reference to US EPA 5021 method. Analysis was performed by GC/MS.	1	n.d.	-
HCFC-123 (CAS No.: 306-83-2)	mg/kg	With reference to US EPA 5021 method. Analysis was performed by GC/MS.	1	n.d.	-
HCFC-124 (CAS No.: 2837-89-0)	mg/kg	With reference to US EPA 5021 method. Analysis was performed by GC/MS.	1	n.d.	-
HCFC-131 (CAS No.: 359-28-4)	mg/kg	With reference to US EPA 5021 method. Analysis was performed by GC/MS.	1	n.d.	-
HCFC-132b (CAS No.: 1649-08-7)	mg/kg	With reference to US EPA 5021 method. Analysis was performed by GC/MS.	1	n.d.	-

Unless otherwise stated the results shown in this test report refer only to the sample(s) tested. This test report cannot be reproduced, except in full, without prior written permission of the Company. 除非另有說明，此報告結果僅對測試之樣品負責。本報告未經本公司書面許可，不得部分複製。
This document is issued by the Company subject to its General Conditions of Service Documents at www.sgs.com/en/Terms-and-Conditions/Terms-e-Document. Attention is drawn to the and, for electronic format documents, subject to Terms and Conditions for Electronic Documents at www.sgs.com/en/Terms-and-Conditions/Terms-e-Document. Information contained herein reflects the Company's findings at the time of its intervention only and within the limits of Client's instructions, if any. The Company's sole responsibility is to its Client and this document does not exonerate parties to a transaction from exercising all their rights and obligations under the transaction documents. This document cannot be reproduced except in full, without prior written approval of the Company. Any unauthorized alteration, forgery or falsification of the content or appearance of this document is unlawful and offenders may be prosecuted to the fullest extent of the law.

Test Report

No. : CE/2013/13196 Date : 2013/01/22 Page : 8 of 29

CERAMTEC GMBH

GESCHAFTSBEREICH MULTIFUNKTIONSKERAMIK, LUITPOLDSTRABE 15, 91207 LAUF



Test Item(s)	Unit	Method	MDL	Result	Limit
				No.1	
HCFC-133a (CAS No.: 75-88-7)	mg/kg	With reference to US EPA 5021 method. Analysis was performed by GC/MS.	1	n.d.	-
HCFC-141b (CAS No.: 1717-00-6)	mg/kg	With reference to US EPA 5021 method. Analysis was performed by GC/MS.	1	n.d.	-
HCFC-142b (CAS No.: 75-68-3)	mg/kg	With reference to US EPA 5021 method. Analysis was performed by GC/MS.	1	n.d.	-
HCFC-221 (CAS No.: 422-26-4)	mg/kg	With reference to US EPA 5021 method. Analysis was performed by GC/MS.	1	n.d.	-
HCFC-222 (CAS No.: 422-49-1)	mg/kg	With reference to US EPA 5021 method. Analysis was performed by GC/MS.	1	n.d.	-
HCFC-223 (CAS No.: 422-52-6)	mg/kg	With reference to US EPA 5021 method. Analysis was performed by GC/MS.	1	n.d.	-
HCFC-224 (CAS No.: 422-54-8)	mg/kg	With reference to US EPA 5021 method. Analysis was performed by GC/MS.	1	n.d.	-
HCFC-225ca (CAS No.: 422-56-0)	mg/kg	With reference to US EPA 5021 method. Analysis was performed by GC/MS.	1	n.d.	-
HCFC-225cb (CAS No.: 507-55-1)	mg/kg	With reference to US EPA 5021 method. Analysis was performed by GC/MS.	1	n.d.	-
HCFC-226 (CAS No.: 431-87-8)	mg/kg	With reference to US EPA 5021 method. Analysis was performed by GC/MS.	1	n.d.	-
HCFC-231 (CAS No.: 421-94-3)	mg/kg	With reference to US EPA 5021 method. Analysis was performed by GC/MS.	1	n.d.	-
HCFC-232 (CAS No.: 460-89-9)	mg/kg	With reference to US EPA 5021 method. Analysis was performed by GC/MS.	1	n.d.	-

Unless otherwise stated the results shown in this test report refer only to the sample(s) tested. This test report cannot be reproduced, except in full, without prior written permission of the Company. 除非另有說明，此測試結果僅針對測試之樣品負責。本報告未經本公司書面許可，不得部分複製。
This document is issued by the Company subject to its General Conditions of Service printed overleaf, available on request or accessible at www.sgs.com/terms_and_conditions.htm.
This document is issued by the Company subject to its General Conditions of Service printed overleaf, available on request or accessible at www.sgs.com/en/Terms-and-Conditions/Terms-e-Document. Attention is drawn to the and, for electronic format documents, subject to Terms and Conditions for Electronic Documents at www.sgs.com/en/Terms-and-Conditions/Terms-e-Document. Attention is drawn to the limitation of liability, indemnification and jurisdiction issues defined therein. Any holder of this document is advised that information contained hereon reflects the Company's findings at the time of its intervention only and within the limits of Client's instructions, if any. The Company's sole responsibility is to its Client and this document does not exonerate parties to a transaction from exercising all their rights and obligations under the transaction documents. This document cannot be reproduced except in full, without prior written approval of the Company. Any unauthorized alteration, forgery or falsification of the content or appearance of this document is unlawful and offenders may be prosecuted to the fullest extent of the law.

Test Report

No. : CE/2013/13196 Date : 2013/01/22 Page : 9 of 29

CERAMTEC GMBH

GESCHAFTSBEREICH MULTIFUNKTIONSKERAMIK, LUITPOLDSTRABE 15, 91207 LAUF



Test Item(s)	Unit	Method	MDL	Result	Limit
				No.1	
HCFC-233 (CAS No.: 7125-84-0)	mg/kg	With reference to US EPA 5021 method. Analysis was performed by GC/MS.	1	n.d.	-
HCFC-234 (CAS No.: 425-94-5)	mg/kg	With reference to US EPA 5021 method. Analysis was performed by GC/MS.	1	n.d.	-
HCFC-235 (CAS No.: 460-92-4)	mg/kg	With reference to US EPA 5021 method. Analysis was performed by GC/MS.	1	n.d.	-
HCFC-241 (CAS No.: 666-27-3)	mg/kg	With reference to US EPA 5021 method. Analysis was performed by GC/MS.	1	n.d.	-
HCFC-242 (CAS No.: 460-63-9)	mg/kg	With reference to US EPA 5021 method. Analysis was performed by GC/MS.	1	n.d.	-
HCFC-243 (CAS No.: 460-69-5)	mg/kg	With reference to US EPA 5021 method. Analysis was performed by GC/MS.	1	n.d.	-
HCFC-244	mg/kg	With reference to US EPA 5021 method. Analysis was performed by GC/MS.	1	n.d.	-
HCFC-251 (CAS No.: 421-41-0)	mg/kg	With reference to US EPA 5021 method. Analysis was performed by GC/MS.	1	n.d.	-
HCFC-252 (CAS No.: 819-00-1)	mg/kg	With reference to US EPA 5021 method. Analysis was performed by GC/MS.	1	n.d.	-
HCFC-253 (CAS No.: 460-35-5)	mg/kg	With reference to US EPA 5021 method. Analysis was performed by GC/MS.	1	n.d.	-
HCFC-261 (CAS No.: 420-97-3)	mg/kg	With reference to US EPA 5021 method. Analysis was performed by GC/MS.	1	n.d.	-
HCFC-262 (CAS No.: 421-02-03)	mg/kg	With reference to US EPA 5021 method. Analysis was performed by GC/MS.	1	n.d.	-

Unless otherwise stated the results shown in this test report refer only to the sample(s) tested. This test report cannot be reproduced, except in full, without prior written permission of the Company. 除非另有說明，此報告結果僅對測試之樣品負責。本報告未經本公司主管許可，不可部分複製。

This document is issued by the Company subject to its General Conditions of Service printed overleaf, available on request or accessible at www.sgs.com/terms_and_conditions.htm. This document is drawn to the and, for electronic format documents, subject to Terms and Conditions for Electronic Documents at www.sgs.com/en/Terms-and-Conditions/Terms-e-Document. Attention is drawn to the limitation of liability, indemnification and jurisdiction issues defined therein. Any holder of this document is advised that information contained hereon reflects the Company's findings at the time of its intervention only and within the limits of Client's instructions, if any. The Company's sole responsibility is to its Client and this document does not exonerate parties to a transaction from exercising all their rights and obligations under the transaction documents. This document cannot be reproduced except in full, without prior written approval of the Company. Any unauthorized alteration, forgery or falsification of the content or appearance of this document is unlawful and offenders may be prosecuted to the fullest extent of the law.

Test Report

No. : CE/2013/13196 Date : 2013/01/22 Page : 10 of 29

CERAMTEC GMBH

GESCHAFTSBEREICH MULTIFUNKTIONSKERAMIK, LUITPOLDSTRASSE 15, 91207 LAUF



Test Item(s)	Unit	Method	MDL	Result	Limit
				No.1	
HCFC-271 (CAS No.: 430-55-7)	mg/kg	With reference to US EPA 5021 method. Analysis was performed by GC/MS.	1	n.d.	-
Halons					
Halon-1211 (CAS No.: 353-59-3)	mg/kg	With reference to US EPA 5021 method. Analysis was performed by GC/MS.	1	n.d.	-
Halon-1301 (CAS No.: 75-63-8)	mg/kg		1	n.d.	-
Halon-2402 (CAS No.: 124-73-2)	mg/kg		1	n.d.	-
CHCs (Chlorinate hydrocarbon)					
1,1,1,2-Tetrachloroethane (CAS No.: 630-20-6)	mg/kg	With reference to US EPA 5021 method. Analysis was performed by GC/MS.	1	n.d.	-
1,1,1-Trichloroethane (CAS No.: 71-55-6)	mg/kg	With reference to US EPA 5021 method. Analysis was performed by GC/MS.	1	n.d.	-
1,1,2,2-Tetrachloroethane (CAS No.: 79-34-5)	mg/kg	With reference to US EPA 5021 method. Analysis was performed by GC/MS.	1	n.d.	-
1,1,2-Trichloroethane (CAS No.: 79-00-5)	mg/kg	With reference to US EPA 5021 method. Analysis was performed by GC/MS.	1	n.d.	-
1,1-Dichloroethane (CAS No.: 75-34-3)	mg/kg	With reference to US EPA 5021 method. Analysis was performed by GC/MS.	1	n.d.	-
1,1-Dichloroethene (CAS No.: 75-35-4)	mg/kg	With reference to US EPA 5021 method. Analysis was performed by GC/MS.	1	n.d.	-
1,1-Dichloropropene (CAS No.: 563-58-6)	mg/kg	With reference to US EPA 5021 method. Analysis was performed by GC/MS.	1	n.d.	-
1,2,3-Trichloropropane (CAS No.: 96-18-4)	mg/kg	With reference to US EPA 5021 method. Analysis was performed by GC/MS.	1	n.d.	-
1,2-Dichloroethane (CAS No.: 107-06-2)	mg/kg	With reference to US EPA 5021 method. Analysis was performed by GC/MS.	1	n.d.	-

Unless otherwise stated the results shown in this test report refer only to the sample(s) tested. This test report cannot be reproduced, except in full, without prior written permission of the Company. 除非另有說明，此報告結果僅針對測試之樣品負責。本報告未經本公司書面許可，不可部分複製。
This document is issued by the Company subject to its General Conditions of Service printed overleaf, available on request or accessible at www.sgs.com/terms_and_conditions.htm and, for electronic format documents, subject to Terms and Conditions for Electronic Documents at www.sgs.com/en/Terms-and-Conditions/Terms-e-Document. Attention is drawn to the limitation of liability, indemnification and jurisdiction issues defined therein. Any holder of this document is advised that information contained hereon reflects the Company's findings at the time of its intervention only and within the limits of Client's instructions, if any. The Company's sole responsibility is to its Client and this document does not exonerate parties to a transaction from exercising all their rights and obligations under the transaction documents. This document cannot be reproduced except in full, without prior written approval of the Company. Any unauthorized alteration, forgery or falsification of the content or appearance of this document is unlawful and offenders may be prosecuted to the fullest extent of the law.

Test Report

No. : CE/2013/13196 Date : 2013/01/22 Page : 11 of 29

CERAMTEC GMBH

GESCHAFTSBEREICH MULTIFUNKTIONSKERAMIK, LUITPOLDSTRABE 15, 91207 LAUF



Test Item(s)	Unit	Method	MDL	Result	Limit
				No.1	
1,2-Dichloropropane (CAS No.: 78-87-5)	mg/kg	With reference to US EPA 5021 method. Analysis was performed by GC/MS.	1	n.d.	-
1,3-Dichloropropane (CAS No.: 142-28-9)	mg/kg	With reference to US EPA 5021 method. Analysis was performed by GC/MS.	1	n.d.	-
2,2-Dichloropropane (CAS No.: 594-20-7)	mg/kg	With reference to US EPA 5021 method. Analysis was performed by GC/MS.	1	n.d.	-
Carbon tetrachloride (CAS No.: 56-23-5)	mg/kg	With reference to US EPA 5021 method. Analysis was performed by GC/MS.	1	n.d.	-
Chloroethane (CAS No.: 75-00-3)	mg/kg	With reference to US EPA 5021 method. Analysis was performed by GC/MS.	1	n.d.	-
Chloroform (CAS No.: 67-66-3)	mg/kg	With reference to US EPA 5021 method. Analysis was performed by GC/MS.	1	n.d.	-
Chloromethane (CAS No.: 74-87-3)	mg/kg	With reference to US EPA 5021 method. Analysis was performed by GC/MS.	1	n.d.	-
cis-1,2-Dichloroethene (CAS No.: 156-59-2)	mg/kg	With reference to US EPA 5021 method. Analysis was performed by GC/MS.	1	n.d.	-
cis-1,3-Dichloropropene (CAS No.: 10061-01-5)	mg/kg	With reference to US EPA 5021 method. Analysis was performed by GC/MS.	1	n.d.	-
Hexachlorobutadiene (CAS No.: 87-68-3)	mg/kg	With reference to US EPA 5021 method. Analysis was performed by GC/MS.	1	n.d.	-
Methylene Chloride (CAS No.: 75-09-2)	mg/kg	With reference to US EPA 5021 method. Analysis was performed by GC/MS.	1	n.d.	-
Tetrachloroethene (CAS No.: 127-18-4)	mg/kg	With reference to US EPA 5021 method. Analysis was performed by GC/MS.	1	n.d.	-

Unless otherwise stated the results shown in this test report refer only to the sample(s) tested. This test report cannot be reproduced, except in full, without prior written permission of the Company. 除非另有說明，此報告結果僅對測試之樣品負責。本報告未經本公司書面許可，不可部分複製。
This document is issued by the Company subject to its General Conditions of Service printed overleaf, available on request or accessible at www.sgs.com/terms_and_conditions.htm and, for electronic format documents, subject to Terms and Conditions for Electronic Documents at www.sgs.com/en/Terms-and-Conditions/Terms-e-Document. Attention is drawn to the limitation of liability, indemnification and jurisdiction issues defined therein. Any holder of this document is advised that information contained hereon reflects the Company's findings at the time of its intervention only and within the limits of Client's instructions, if any. The Company's sole responsibility is to its Client and this document does not exonerate parties to a transaction from exercising all their rights and obligations under the transaction documents. This document cannot be reproduced except in full, without prior written approval of the Company. Any unauthorized alteration, forgery or falsification of the content or appearance of this document is unlawful and offenders may be prosecuted to the fullest extent of the law.

Test Report

No. : CE/2013/13196 Date : 2013/01/22 Page : 12 of 29

CERAMTEC GMBH

GESCHAFTSBEREICH MULTIFUNKTIONSKERAMIK, LUITPOLDSTRABE 15, 91207 LAUF



Test Item(s)	Unit	Method	MDL	Result	Limit
				No.1	
trans-1,2-Dichloroethene (CAS No.: 156-60-5)	mg/kg	With reference to US EPA 5021 method. Analysis was performed by GC/MS.	1	n.d.	-
trans-1,3-Dichloropropene (CAS No.: 10061-02-6)	mg/kg	With reference to US EPA 5021 method. Analysis was performed by GC/MS.	1	n.d.	-
Trichloroethylene (CAS No.: 79-01-6)	mg/kg	With reference to US EPA 5021 method. Analysis was performed by GC/MS.	1	n.d.	-
Sum of PBBs	mg/kg	With reference to IEC 62321: 2008 and performed by GC/MS.	-	n.d.	1000
Monobromobiphenyl	mg/kg		5	n.d.	-
Dibromobiphenyl	mg/kg		5	n.d.	-
Tribromobiphenyl	mg/kg		5	n.d.	-
Tetrabromobiphenyl	mg/kg		5	n.d.	-
Pentabromobiphenyl	mg/kg		5	n.d.	-
Hexabromobiphenyl	mg/kg		5	n.d.	-
Heptabromobiphenyl	mg/kg		5	n.d.	-
Octabromobiphenyl	mg/kg		5	n.d.	-
Nonabromobiphenyl	mg/kg		5	n.d.	-
Decabromobiphenyl	mg/kg		5	n.d.	-
Sum of PBDEs	mg/kg		-	n.d.	1000
Monobromodiphenyl ether	mg/kg		5	n.d.	-
Dibromodiphenyl ether	mg/kg		5	n.d.	-
Tribromodiphenyl ether	mg/kg		5	n.d.	-
Tetrabromodiphenyl ether	mg/kg		5	n.d.	-
Pentabromodiphenyl ether	mg/kg		5	n.d.	-
Hexabromodiphenyl ether	mg/kg		5	n.d.	-
Heptabromodiphenyl ether	mg/kg		5	n.d.	-
Octabromodiphenyl ether	mg/kg		5	n.d.	-
Nonabromodiphenyl ether	mg/kg		5	n.d.	-
Decabromodiphenyl ether	mg/kg		5	n.d.	-

Unless otherwise stated the results shown in this test report refer only to the sample(s) tested. This test report cannot be reproduced, except in full, without prior written permission of the Company. 除非另有說明，此報告結果均對測試之樣品負責。本報告未經本公司書面許可，不可部分複製。
This document is issued by the Company subject to its General Conditions of Service printed overleaf, available on request or accessible at www.sgs.com/terms_and_conditions.htm and, for electronic format documents, subject to Terms and Conditions for Electronic Documents at www.sgs.com/en/Terms-and-Conditions/Terms-e-Documents. Attention is drawn to the limitation of liability, indemnification and jurisdiction issues defined therein. Any holder of this document is advised that information contained hereon reflects the Company's findings at the time of its intervention only and within the limits of Client's instructions, if any. The Company's sole responsibility is to its Client and this document does not exonerate parties to a transaction from exercising all their rights and obligations under the transaction documents. This document cannot be reproduced except in full, without prior written approval of the Company. Any unauthorized alteration, forgery or falsification of the content or appearance of this document is unlawful and offenders may be prosecuted to the fullest extent of the law.

Test Report

No. : CE/2013/13196 Date : 2013/01/22 Page : 13 of 29

CERAMTEC GMBH

GESCHAFTSBEREICH MULTIFUNKTIONSKERAMIK, LUITPOLDSTRASSE 15, 91207 LAUF



Note :

1. mg/kg = ppm : 0.1wt% = 1000ppm
2. n.d. = Not Detected
3. MDL = Method Detection Limit
4. " - " = Not Regulated
5. ** = Qualitative analysis (No Unit)
6. Negative = Undetectable / Positive = Detectable
7. Testing range of asbestos qualitative analysis is from less than 0.1% to 100%. The judgment criterion: asbestos fibers being found is shown as "Positive"; asbestos fibers not being found is shown as "Negative".

PFOS Reference Information : POPs - (EU) 757/2010

Outlawing PFOS as substances or preparations in concentrations above 0.001% (10ppm), in semi-finished products or articles or parts at a level above 0.1%(1000ppm), in textiles or other coated materials above 1µg/m².

Unless otherwise stated the results shown in this test report refer only to the sample(s) tested. This test report cannot be reproduced, except in full, without prior written permission of the Company. 除非另有說明，此報告結果僅對測試之樣品負責。本報告未經本公司同意不得重印或轉載。
This document is issued by the Company subject to its General Conditions of Service printed overleaf, available on request or accessible at www.sgs.com/terms_and_conditions.htm and, for electronic format documents, subject to Terms and Conditions for Electronic Documents at www.sgs.com/en/Terms-and-Conditions/Terms-e-Documents. Attention is drawn to the limitation of liability, indemnification and jurisdiction issues defined therein. Any holder of this document is advised that information contained hereon reflects the Company's findings at the time of its intervention only and within the limits of Client's instructions, if any. The Company's sole responsibility is to its Client and this document does not exonerate parties to a transaction from exercising all their rights and obligations under the transaction documents. This document cannot be reproduced except in full, without prior written approval of the Company. Any unauthorized alteration, forgery or falsification of the content or appearance of this document is unlawful and offenders may be prosecuted to the fullest extent of the law.

Test Report

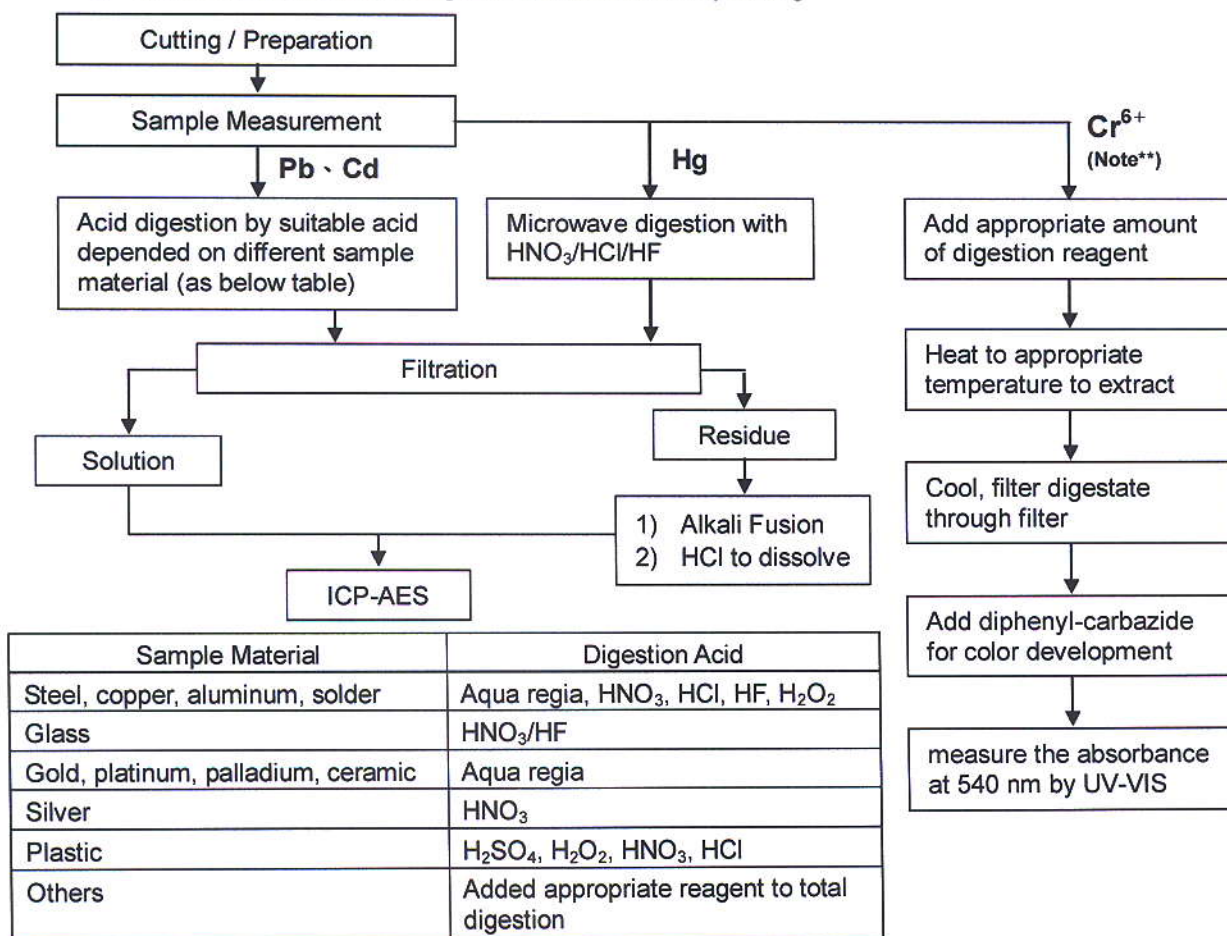
No. : CE/2013/13196 Date : 2013/01/22 Page : 14 of 29

CERAMTEC GMBH

GESCHAFTSBEREICH MULTIFUNKTIONSKERAMIK, LUITPOLDSTRASSE 15, 91207 LAUF



- 1) These samples were dissolved totally by pre-conditioning method according to below flow chart.
(Cr⁶⁺ test method excluded)
- 2) Name of the person who made measurement: Climbgreat Yang
- 3) Name of the person in charge of measurement: Troy Chang



Note :** (1) For non-metallic material, add alkaline digestion reagent and heat to 90~95 °C.
(2) For metallic material, add pure water and heat to boiling.

Unless otherwise stated the results shown in this test report refer only to the sample(s) tested. This test report cannot be reproduced, except in full, without prior written permission of the Company. 除非另有說明，此報告結果僅對測試之樣品負責，不得部分複製或轉載。本報告未經本公司主管許可，不可部分複製或轉載。
This document is issued by the Company subject to its General Conditions of Service printed overleaf, available on request or accessible at www.sgs.com/terms_and_conditions.htm and, for electronic format documents, subject to Terms and Conditions for Electronic Documents at www.sgs.com/en/Terms-and-Conditions/Terms-e-Document. Attention is drawn to the limitation of liability, indemnification and jurisdiction issues defined therein. Any holder of this document is advised that information contained hereon reflects the Company's findings at the time of its intervention only and within the limits of Client's instructions, if any. The Company's sole responsibility is to its Client and this document does not exonerate parties to a transaction from exercising all their rights and obligations under the transaction documents. This document cannot be reproduced except in full, without prior written approval of the Company. Any unauthorized alteration, forgery or falsification of the content or appearance of this document is unlawful and offenders may be prosecuted to the fullest extent of the law.

Test Report

No. : CE/2013/13196 Date : 2013/01/22 Page : 15 of 29

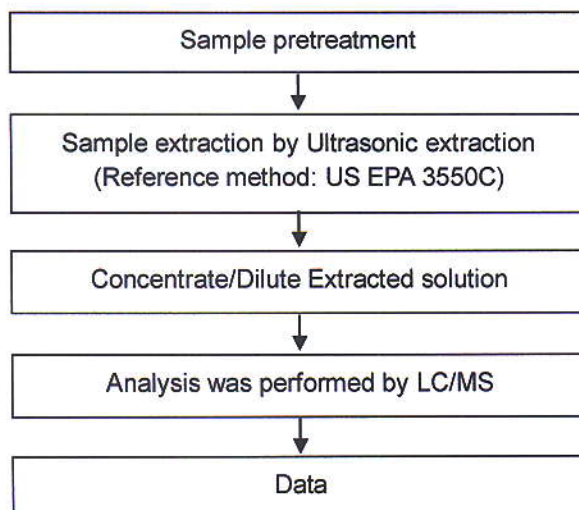
CERAMTEC GMBH

GESCHAFTSBEREICH MULTIFUNKTIONSKERAMIK, LUITPOLDSTRABE 15, 91207 LAUF



PFOA/PFOS analytical flow chart of Ultrasonic extraction (LC/MS) procedure

- Name of the person who made measurement: Roman Wong
- Name of the person in charge of measurement: Troy Chang



Unless otherwise stated the results shown in this test report refer only to the sample(s) tested. This test report cannot be reproduced, except in full, without prior written permission of the Company. 除非另有說明，此報告結果僅對測試之樣品負責。本報告未經本公司書面許可，不得部分複製。

This document is issued by the Company subject to its General Conditions of Service printed overleaf, available on request or accessible at www.sgs.com/terms_and_conditions.htm and, for electronic format documents, subject to Terms and Conditions for Electronic Documents at www.sgs.com/en/Terms-and-Conditions/Terms-e-Document. Attention is drawn to the limitation of liability, indemnification and jurisdiction issues defined therein. Any holder of this document is advised that information contained hereon reflects the Company's findings at the time of its intervention only and within the limits of Client's instructions, if any. The Company's sole responsibility is to its Client and this document does not exonerate parties to a transaction from exercising all their rights and obligations under the transaction documents. This document cannot be reproduced except in full, without prior written approval of the Company. Any unauthorized alteration, forgery or falsification of the content or appearance of this document is unlawful and offenders may be prosecuted to the fullest extent of the law.

Test Report

No. : CE/2013/13196 Date : 2013/01/22 Page : 16 of 29

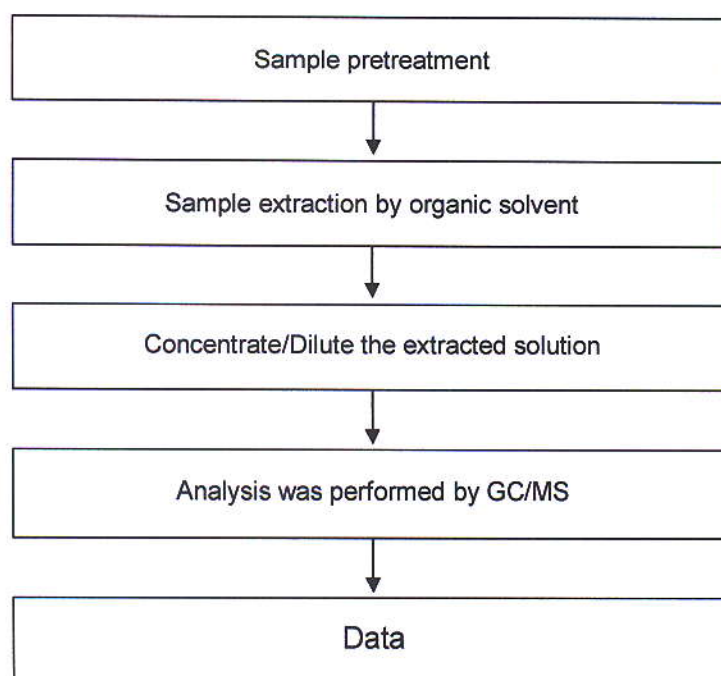
CERAMTEC GMBH

GESCHAFTSBEREICH MULTIFUNKTIONSKERAMIK, LUITPOLDSTRASSE 15, 91207 LAUF



PCTs analytical flow chart

- Name of the person who made measurement: Barry Tseng
- Name of the person in charge of measurement: Troy Chang



Unless otherwise stated the results shown in this test report refer only to the sample(s) tested. This test report cannot be reproduced, except in full, without prior written permission of the Company. 除非另有說明，此報告結果僅對測試之樣品負責。本報告未經本公司同意，不得部分複製。
 This document is issued by the Company subject to its General Conditions of Service printed overleaf, available on request or accessible at www.sgs.com/terms_and_conditions.htm and, for electronic format documents, subject to Terms and Conditions for Electronic Documents at www.sgs.com/en/Terms-and-Conditions/Terms-e-Documents. Attention is drawn to the limitation of liability, indemnification and jurisdiction issues defined therein. Any holder of this document is advised that information contained hereon reflects the Company's findings at the time of its intervention only and within the limits of Client's instructions, if any. The Company's sole responsibility is to its Client and this document does not exonerate parties to a transaction from exercising all their rights and obligations under the transaction documents. This document cannot be reproduced except in full, without prior written approval of the Company. Any unauthorized alteration, forgery or falsification of the content or appearance of this document is unlawful and offenders may be prosecuted to the fullest extent of the law.

Test Report

No. : CE/2013/13196 Date : 2013/01/22 Page : 17 of 29

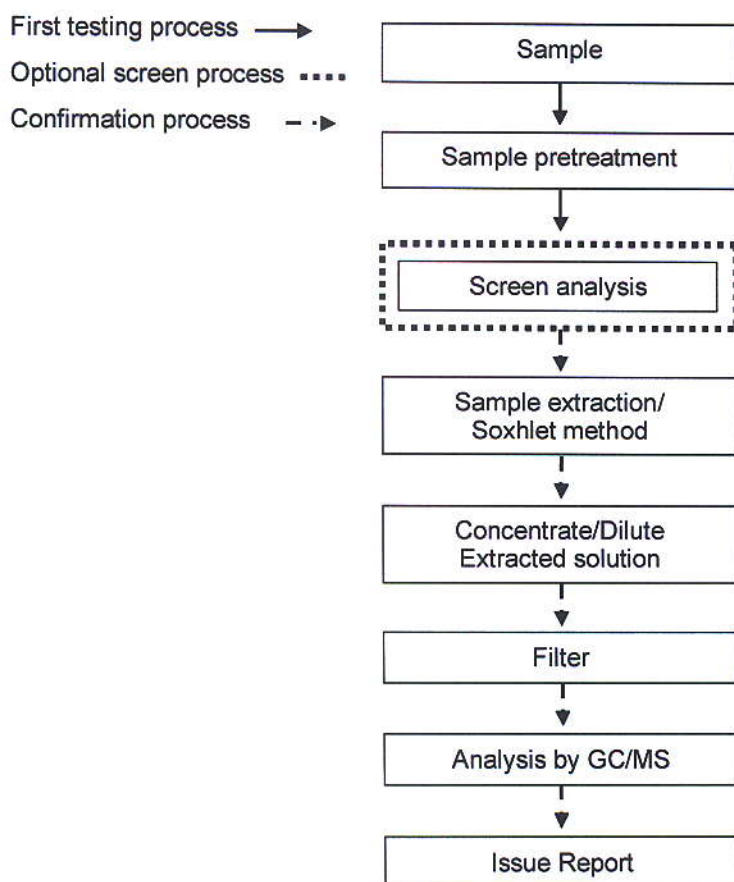
CERAMTEC GMBH

GESCHAFTSBEREICH MULTIFUNKTIONSKERAMIK, LUITPOLDSTRABE 15, 91207 LAUF



PBB/PBDE analytical FLOW CHART

- Name of the person who made measurement: Roman Wong
- Name of the person in charge of measurement: Troy Chang



Unless otherwise stated the results shown in this test report refer only to the sample(s) tested. This test report cannot be reproduced, except in full, without prior written permission of the Company. 除非另有說明，此報告結果僅針對測試之樣品負責。本報告未經本公司同意，不可部分複製。

This document is issued by the Company subject to its General Conditions of Service printed overleaf, available on request or accessible at www.sgs.com/terms_and_conditions.htm and, for electronic format documents, subject to Terms and Conditions for Electronic Documents at www.sgs.com/en/Terms-and-Conditions/Terms-e-Document. Attention is drawn to the limitation of liability, indemnification and jurisdiction issues defined therein. Any holder of this document is advised that information contained hereon reflects the Company's findings at the time of its intervention only and within the limits of Client's instructions, if any. The Company's sole responsibility is to its Client and this document does not exonerate parties to a transaction from exercising all their rights and obligations under the transaction documents. This document cannot be reproduced except in full, without prior written approval of the Company. Any unauthorized alteration, forgery or falsification of the content or appearance of this document is unlawful and offenders may be prosecuted to the fullest extent of the law.

Test Report

No. : CE/2013/13196 Date : 2013/01/22 Page : 18 of 29

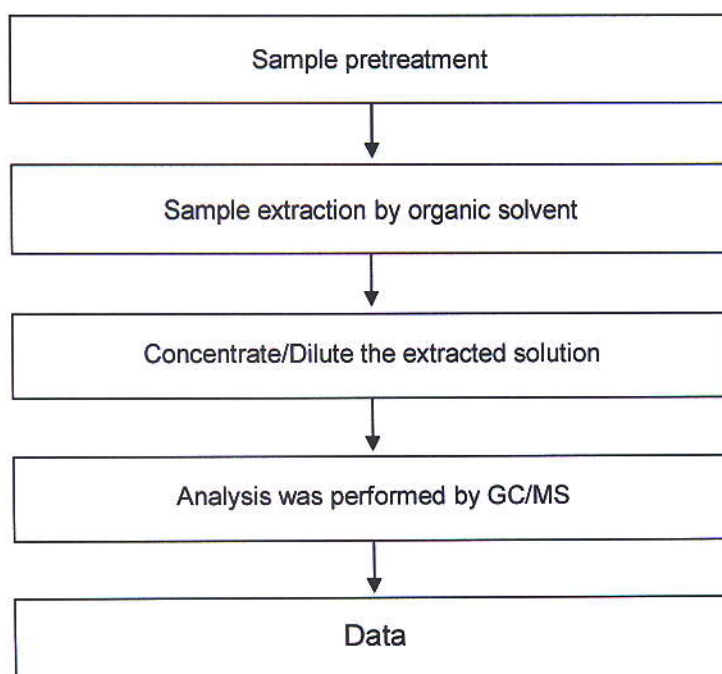
CERAMTEC GMBH

GESCHAFTSBEREICH MULTIFUNKTIONSKERAMIK, LUITPOLDSTRASSE 15, 91207 LAUF



PCBs analytical flow chart

- Name of the person who made measurement: Barry Tseng
- Name of the person in charge of measurement: Troy Chang



Unless otherwise stated the results shown in this test report refer only to the sample(s) tested. This test report cannot be reproduced, except in full, without prior written permission of the Company. 除非另有說明，此報告書以所測試之樣品為限。未經本公司書面許可，不得部分複製。
 This document is issued by the Company subject to its General Conditions of Service printed overleaf, available on request or accessible at www.sgs.com/terms_and_conditions.htm and, for electronic format documents, subject to Terms and Conditions for Electronic Documents at www.sgs.com/en/Terms-and-Conditions/Terms-e-Document. Attention is drawn to the limitation of liability, indemnification and jurisdiction issues defined therein. Any holder of this document is advised that information contained hereon reflects the Company's findings at the time of its intervention only and within the limits of Client's instructions, if any. The Company's sole responsibility is to its Client and this document does not exonerate parties to a transaction from exercising all their rights and obligations under the transaction documents. This document cannot be reproduced except in full, without prior written approval of the Company. Any unauthorized alteration, forgery or falsification of the content or appearance of this document is unlawful and offenders may be prosecuted to the fullest extent of the law.

Test Report

No. : CE/2013/13196 Date : 2013/01/22 Page : 19 of 29

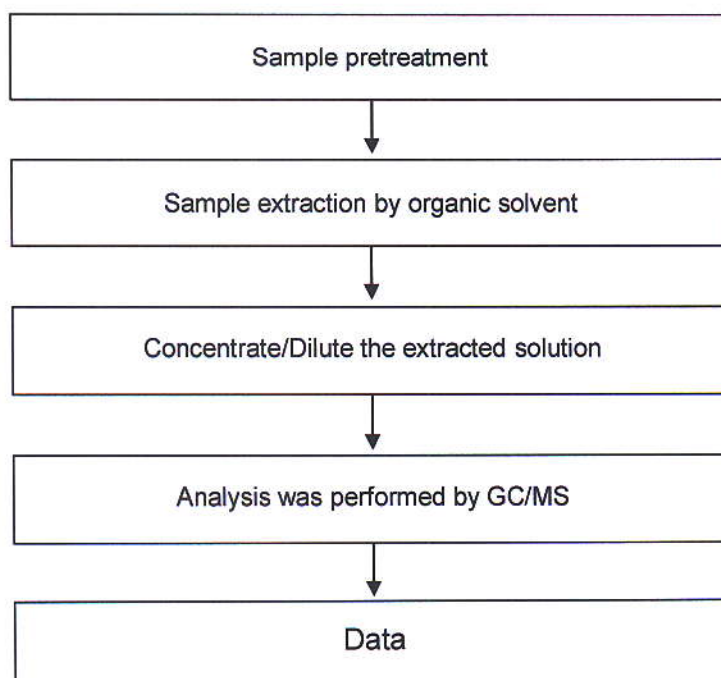
CERAMTEC GMBH

GESCHAFTSBEREICH MULTIFUNKTIONSKERAMIK, LUITPOLDSTRABE 15, 91207 LAUF



Chlorinated Paraffins analytical flow chart

- Name of the person who made measurement: Barry Tseng
- Name of the person in charge of measurement: Troy Chang



Unless otherwise stated the results shown in this test report refer only to the sample(s) tested. This test report cannot be reproduced, except in full, without prior written permission of the Company. 除非另有說明，此報告係以針對測試之樣品為限。本報告未經本公司書面許可，不可部分複製。
 This document is issued by the Company subject to its General Conditions of Service printed overleaf, available on request or accessible at www.sgs.com/terms_and_conditions.htm and, for electronic format documents, subject to Terms and Conditions for Electronic Documents at www.sgs.com/en/Terms-and-Conditions/Terms-e-Document. Attention is drawn to the limitation of liability, indemnification and jurisdiction issues defined therein. Any holder of this document is advised that information contained hereon reflects the Company's findings at the time of its intervention only and within the limits of Client's instructions, if any. The Company's sole responsibility is to its Client and this document does not exonerate parties to a transaction from exercising all their rights and obligations under the transaction documents. This document cannot be reproduced except in full, without prior written approval of the Company. Any unauthorized alteration, forgery or falsification of the content or appearance of this document is unlawful and offenders may be prosecuted to the fullest extent of the law.

Test Report

No. : CE/2013/13196 Date : 2013/01/22 Page : 20 of 29

CERAMTEC GMBH

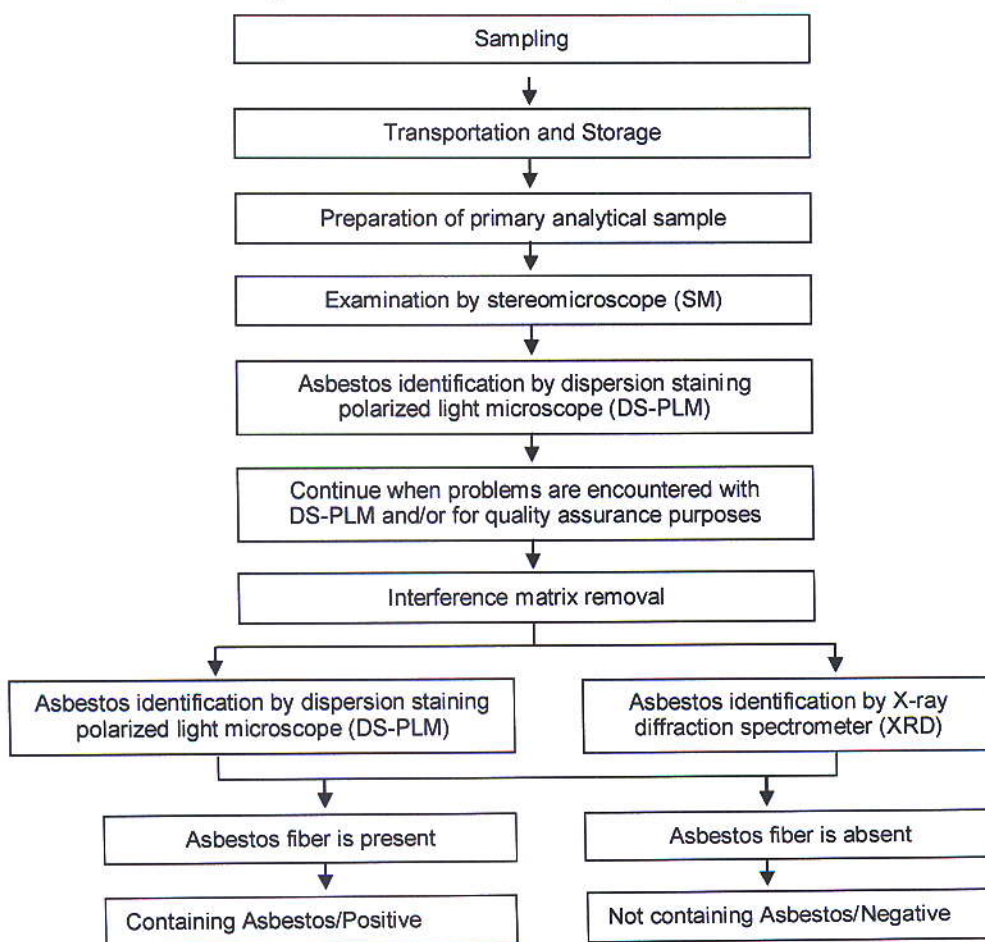
GESCHAFTSBEREICH MULTIFUNKTIONSKERAMIK, LUITPOLDSTRABE 15, 91207 LAUF



Analysis flow chart for determination of Asbestos

- Name of the person who made measurement: Victor Kao
- Name of the person in charge of measurement: Wendy Wei

【 Reference method: EPA 600/R-93/116 】



Unless otherwise stated the results shown in this test report refer only to the sample(s) tested. This test report cannot be reproduced, except in full, without prior written permission of the Company. 除非另有說明，此報告結果僅針對測試之樣品負責，未經本公司同意，不得部分複製。
 This document is issued by the Company subject to its General Conditions of Service printed overleaf, available on request or accessible at www.sgs.com/terms_and_conditions.htm and, for electronic format documents, subject to Terms and Conditions for Electronic Documents at www.sgs.com/en/Terms-and-Conditions/Terms-e-Document. Attention is drawn to the limitation of liability, indemnification and jurisdiction issues defined therein. Any holder of this document is advised that information contained hereon reflects the Company's findings at the time of its intervention only and within the limits of Client's instructions, if any. The Company's sole responsibility is to its Client and this document does not exonerate parties to a transaction from exercising all their rights and obligations under the transaction documents. This document cannot be reproduced except in full, without prior written approval of the Company. Any unauthorized alteration, forgery or falsification of the content or appearance of this document is unlawful and offenders may be prosecuted to the fullest extent of the law.

Test Report

No. : CE/2013/13196 Date : 2013/01/22 Page : 21 of 29

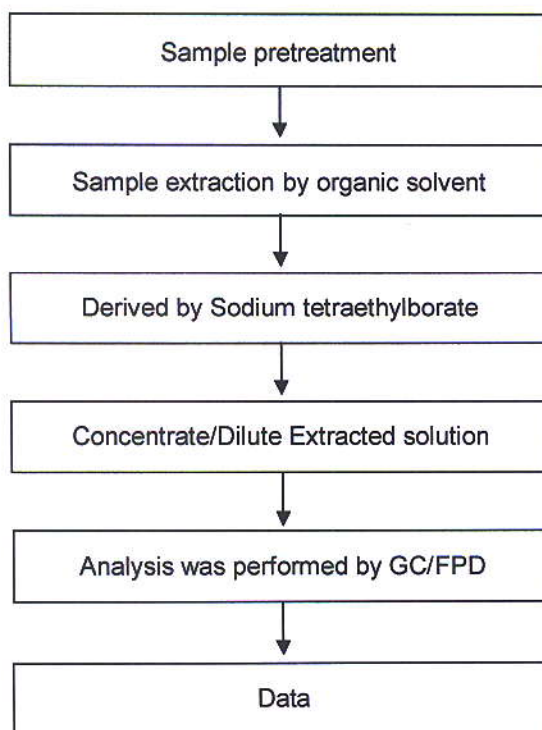
CERAMTEC GMBH

GESCHAFTSBEREICH MULTIFUNKTIONSKERAMIK, LUITPOLDSTRABE 15, 91207 LAUF



Analytical flow chart of Organic-Tin content

- Name of the person who made measurement: Ginny Chen
- Name of the person in charge of measurement: Troy Chang



Unless otherwise stated the results shown in this test report refer only to the sample(s) tested. This test report cannot be reproduced, except in full, without prior written permission of the Company. 除非另有說明，此報告結果僅對測試之樣品負責。本報告未經本公司同意，不得部分複製。
 This document is issued by the Company subject to its General Conditions of Service printed overleaf, available on request or accessible at www.sgs.com/terms_and_conditions.htm and, for electronic format documents, subject to Terms and Conditions for Electronic Documents at www.sgs.com/en/Terms-and-Conditions/Terms-e-Document. Attention is drawn to the limitation of liability, indemnification and jurisdiction issues defined therein. Any holder of this document is advised that information contained hereon reflects the Company's findings at the time of its intervention only and within the limits of Client's instructions, if any. The Company's sole responsibility is to its Client and this document does not exonerate parties to a transaction from exercising all their rights and obligations under the transaction documents. This document cannot be reproduced except in full, without prior written approval of the Company. Any unauthorized alteration, forgery or falsification of the content or appearance of this document is unlawful and offenders may be prosecuted to the fullest extent of the law.

Test Report

No. : CE/2013/13196 Date : 2013/01/22 Page : 22 of 29

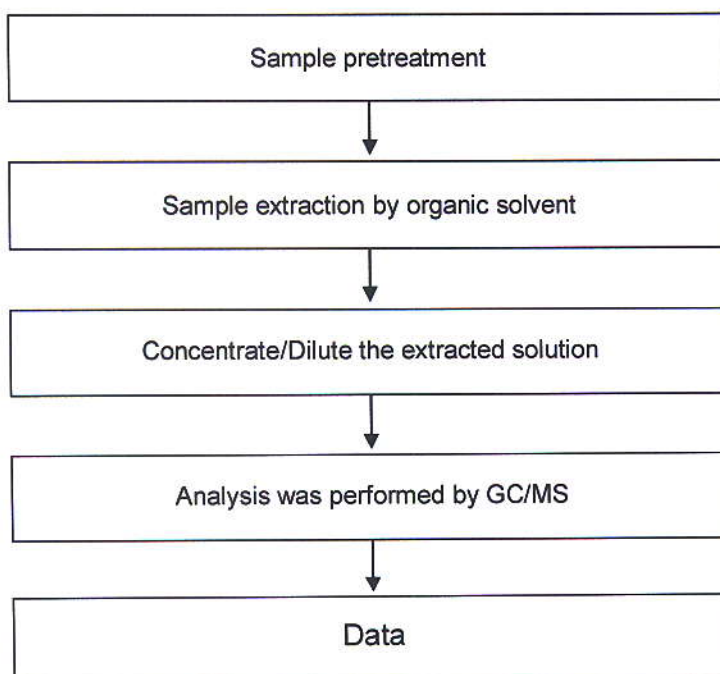
CERAMTEC GMBH

GESCHAFTSBEREICH MULTIFUNKTIONSKERAMIK, LUITPOLDSTRASSE 15, 91207 LAUF



PCNs analytical flow chart

- Name of the person who made measurement: Barry Tseng
- Name of the person in charge of measurement: Troy Chang



Unless otherwise stated the results shown in this test report refer only to the sample(s) tested. This test report cannot be reproduced, except in full, without prior written permission of the Company. 除非另有說明，此報告結果僅對測試之樣品負責。本報告未經本公司書面許可，不可部分複製。

This document is issued by the Company subject to its General Conditions of Service printed overleaf, available on request or accessible at www.sgs.com/terms_and_conditions.htm and, for electronic format documents, subject to Terms and Conditions for Electronic Documents at www.sgs.com/en/Terms-and-Conditions/Terms-e-Document. Attention is drawn to the limitation of liability, indemnification and jurisdiction issues defined therein. Any holder of this document is advised that information contained hereon reflects the Company's findings at the time of its intervention only and within the limits of Client's instructions, if any. The Company's sole responsibility is to its Client and this document does not exonerate parties to a transaction from exercising all their rights and obligations under the transaction documents. This document cannot be reproduced except in full, without prior written approval of the Company. Any unauthorized alteration, forgery or falsification of the content or appearance of this document is unlawful and offenders may be prosecuted to the fullest extent of the law.

Test Report

No. : CE/2013/13196 Date : 2013/01/22 Page : 23 of 29

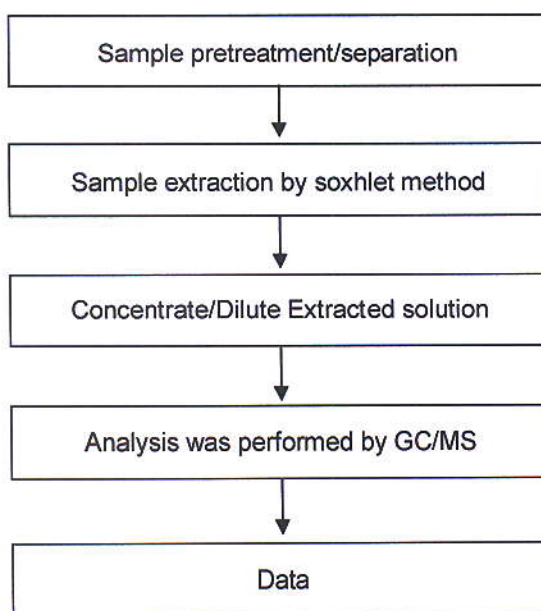
CERAMTEC GMBH

GESCHAFTSBEREICH MULTIFUNKTIONSKERAMIK, LUITPOLDSTRABE 15, 91207 LAUF



Analytical flow chart of phthalate content

- Name of the person who made measurement: Roman Wong
- Name of the person in charge of measurement: Troy Chang



Unless otherwise stated the results shown in this test report refer only to the sample(s) tested. This test report cannot be reproduced, except in full, without prior written permission of the Company. 除非另有說明，此報告結果僅針對測試之樣品負責。本報告未經本公司同意，請勿部分複製。

This document is issued by the Company subject to its General Conditions of Service printed overleaf, available on request or accessible at www.sgs.com/terms_and_conditions.htm and, for electronic format documents, subject to Terms and Conditions for Electronic Documents at www.sgs.com/en/Terms-and-Conditions/Terms-e-Document. Attention is drawn to the limitation of liability, indemnification and jurisdiction issues defined therein. Any holder of this document is advised that information contained hereon reflects the Company's findings at the time of its intervention only and within the limits of Client's instructions, if any. The Company's sole responsibility is to its Client and this document does not exonerate parties to a transaction from exercising all their rights and obligations under the transaction documents. This document cannot be reproduced except in full, without prior written approval of the Company. Any unauthorized alteration, forgery or falsification of the content or appearance of this document is unlawful and offenders may be prosecuted to the fullest extent of the law.

Test Report

No. : CE/2013/13196 Date : 2013/01/22 Page : 24 of 29

CERAMTEC GMBH

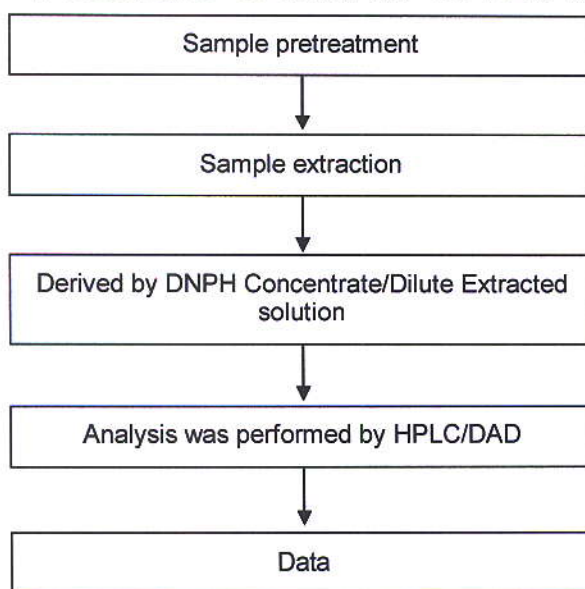
GESCHAFTSBEREICH MULTIFUNKTIONSKERAMIK, LUITPOLDSTRABE 15, 91207 LAUF



Formaldehyde analytical flow chart

- Name of the person who made measurement: Scott Ku
- Name of the person in charge of measurement: Troy Chang

【 Test Method : US EPA 8315A 、 ISO 17226-1 】



Unless otherwise stated the results shown in this test report refer only to the sample(s) tested. This test report cannot be reproduced, except in full, without prior written permission of the Company. 除非另有說明，此報告結果僅針對測試之樣品負責。未經本公司同意，不可部分複製。

This document is issued by the Company subject to its General Conditions of Service printed overleaf, available on request or accessible at www.sgs.com/terms_and_conditions.htm and, for electronic format documents, subject to Terms and Conditions for Electronic Documents at www.sgs.com/en/Terms-and-Conditions/Terms-e-Document. Attention is drawn to the limitation of liability, indemnification and jurisdiction issues defined therein. Any holder of this document is advised that information contained hereon reflects the Company's findings at the time of its intervention only and within the limits of Client's instructions, if any. The Company's sole responsibility is to its Client and this document does not exonerate parties to a transaction from exercising all their rights and obligations under the transaction documents. This document cannot be reproduced except in full, without prior written approval of the Company. Any unauthorized alteration, forgery or falsification of the content or appearance of this document is unlawful and offenders may be prosecuted to the fullest extent of the law.

Test Report

No. : CE/2013/13196 Date : 2013/01/22 Page : 25 of 29

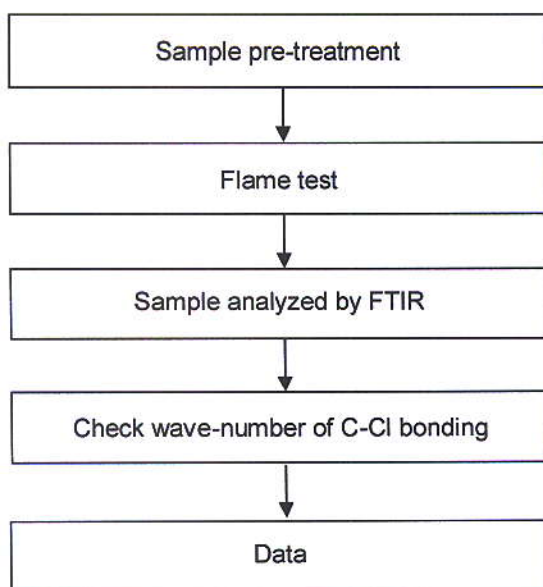
CERAMTEC GMBH

GESCHAFTSBEREICH MULTIFUNKTIONSKERAMIK, LUITPOLDSTRASSE 15, 91207 LAUF



Analysis flow chart for determination of PVC in material

- Name of the person who made measurement: Ginny Chen
- Name of the person in charge of measurement: Troy Chang



Unless otherwise stated the results shown in this test report refer only to the sample(s) tested. This test report cannot be reproduced, except in full, without prior written permission of the Company. 除非另有說明，此測試結果僅針對測試之樣品負責。本報告未經本公司書面許可，不得部分複製。
This document is issued by the Company subject to its General Conditions of Service printed overleaf, available on request or accessible at www.sgs.com/terms_and_conditions.htm and, for electronic format documents, subject to Terms and Conditions for Electronic Documents at www.sgs.com/en/Terms-and-Conditions/Terms-e-Document. Attention is drawn to the limitation of liability, indemnification and jurisdiction issues defined therein. Any holder of this document is advised that information contained hereon reflects the Company's findings at the time of its intervention only and within the limits of Client's instructions, if any. The Company's sole responsibility is to its Client and this document does not exonerate parties to a transaction from exercising all their rights and obligations under the transaction documents. This document cannot be reproduced except in full, without prior written approval of the Company. Any unauthorized alteration, forgery or falsification of the content or appearance of this document is unlawful and offenders may be prosecuted to the fullest extent of the law.

Test Report

No. : CE/2013/13196 Date : 2013/01/22 Page : 26 of 29

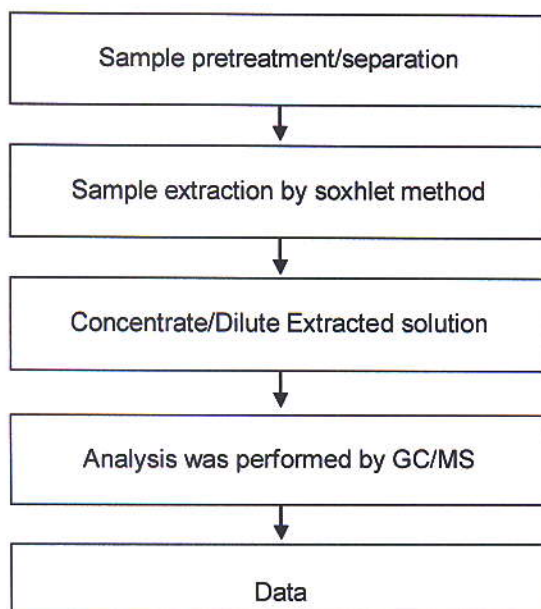
CERAMTEC GMBH

GESCHAFTSBEREICH MULTIFUNKTIONSKERAMIK, LUITPOLDSTRABE 15, 91207 LAUF



DBBT analytical flow chart

- Name of the person who made measurement: Roman Wong
- Name of the person in charge of measurement: Troy Chang



Unless otherwise stated the results shown in this test report refer only to the sample(s) tested. This test report cannot be reproduced, except in full, without prior written permission of the Company. 除非另有說明，此報告結果僅對測試之樣品負責。本報告未經本公司書面許可，不得部分複製。
This document is issued by the Company subject to its General Conditions of Service printed overleaf, available on request or accessible at www.sgs.com/terms_and_conditions.htm and, for electronic format documents, subject to Terms and Conditions for Electronic Documents at www.sgs.com/en/Terms-and-Conditions/Terms-e-Document. Attention is drawn to the limitation of liability, indemnification and jurisdiction issues defined therein. Any holder of this document is advised that information contained hereon reflects the Company's findings at the time of its intervention only and within the limits of Client's instructions, if any. The Company's sole responsibility is to its Client and this document does not exonerate parties to a transaction from exercising all their rights and obligations under the transaction documents. This document cannot be reproduced except in full, without prior written approval of the Company. Any unauthorized alteration, forgery or falsification of the content or appearance of this document is unlawful and offenders may be prosecuted to the fullest extent of the law.

Test Report

No. : CE/2013/13196 Date : 2013/01/22 Page : 27 of 29

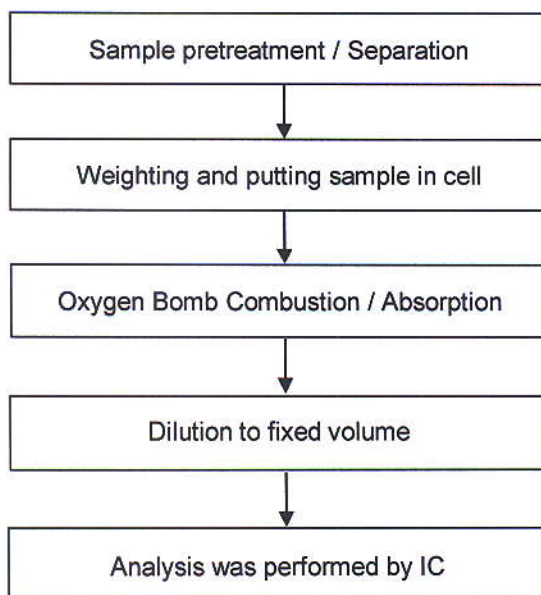
CERAMTEC GMBH

GESCHAFTSBEREICH MULTIFUNKTIONSKERAMIK, LUITPOLDSTRABE 15, 91207 LAUF



Analytical flow chart of halogen content

- 1) Name of the person who made measurement: Rita Chen
- 2) Name of the person in charge of measurement: Troy Chang



Unless otherwise stated the results shown in this test report refer only to the sample(s) tested. This test report cannot be reproduced, except in full, without prior written permission of the Company. 除非另有說明，此報告結果僅針對測試之樣品有效。本報告未經本公司許可，不得部分複製。
 This document is issued by the Company subject to its General Conditions of Service printed overleaf, available on request or accessible at www.sgs.com/terms_and_conditions.htm and, for electronic format documents, subject to Terms and Conditions for Electronic Documents at www.sgs.com/en/Terms-and-Conditions/Terms-e-Document. Attention is drawn to the limitation of liability, indemnification and jurisdiction issues defined therein. Any holder of this document is advised that information contained hereon reflects the Company's findings at the time of its intervention only and within the limits of Client's instructions, if any. The Company's sole responsibility is to its Client and this document does not exonerate parties to a transaction from exercising all their rights and obligations under the transaction documents. This document cannot be reproduced except in full, without prior written approval of the Company. Any unauthorized alteration, forgery or falsification of the content or appearance of this document is unlawful and offenders may be prosecuted to the fullest extent of the law.

Test Report

No. : CE/2013/13196 Date : 2013/01/22 Page : 28 of 29

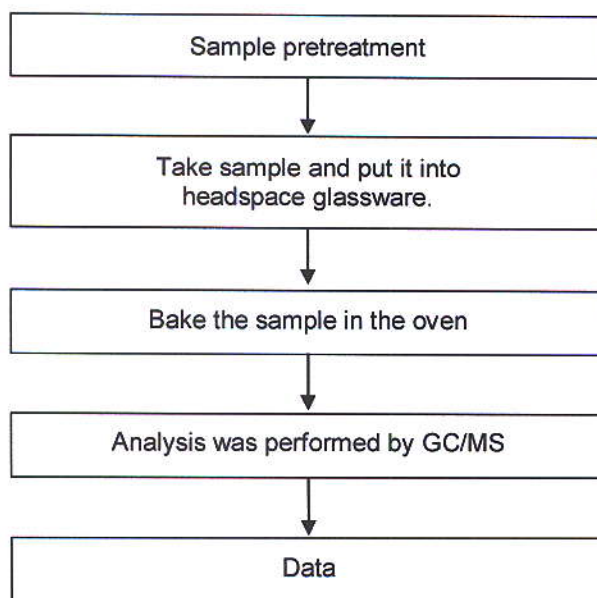
CERAMTEC GMBH

GESCHAFTSBEREICH MULTIFUNKTIONSKERAMIK, LUITPOLDSTRABE 15, 91207 LAUF



Analytical flow chart of volatile organic compounds (VOCs)

- Name of the person who made measurement : Chun Wu
 - Name of the person in charge of measurement : Shinjyh Chen
- 【Reference method : US EPA 5021】



Unless otherwise stated the results shown in this test report refer only to the sample(s) tested. This test report cannot be reproduced, except in full, without prior written permission of the Company. 除非另有說明，此報告結果僅對測試之樣品負責。本報告未經本公司書面許可，不可部分複製。

This document is issued by the Company subject to its General Conditions of Service printed overleaf, available on request or accessible at www.sgs.com/terms_and_conditions.htm and, for electronic format documents, subject to Terms and Conditions for Electronic Documents at www.sgs.com/en/Terms-and-Conditions/Terms-e-Document. Attention is drawn to the limitation of liability, indemnification and jurisdiction issues defined therein. Any holder of this document is advised that information contained hereon reflects the Company's findings at the time of its intervention only and within the limits of Client's instructions, if any. The Company's sole responsibility is to its Client and this document does not exonerate parties to a transaction from exercising all their rights and obligations under the transaction documents. This document cannot be reproduced except in full, without prior written approval of the Company. Any unauthorized alteration, forgery or falsification of the content or appearance of this document is unlawful and offenders may be prosecuted to the fullest extent of the law.

Test Report

No. : CE/2013/13196 Date : 2013/01/22 Page : 29 of 29

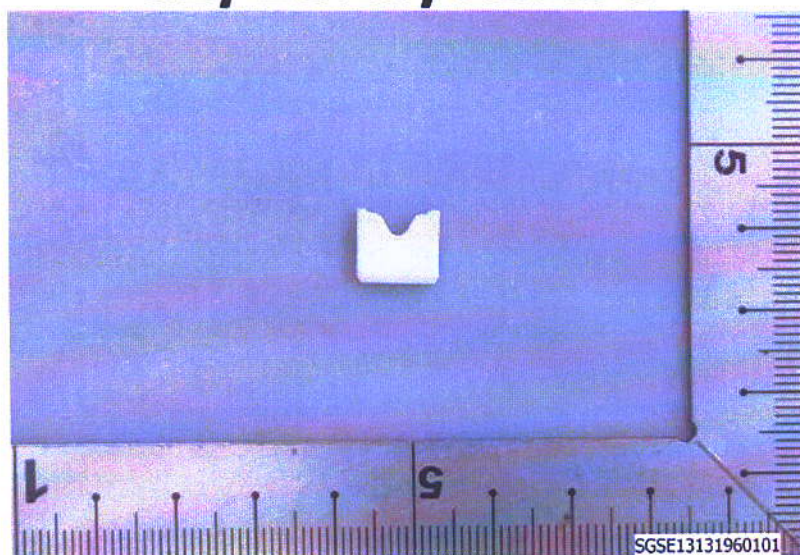
CERAMTEC GMBH

GESCHAFTSBEREICH MULTIFUNKTIONSKERAMIK, LUITPOLDSTRASSE 15, 91207 LAUF



* The tested sample / part is marked by an arrow if it's shown on the photo. *

CE/2013/13196



** End of Report **

Unless otherwise stated the results shown in this test report refer only to the sample(s) tested. This test report cannot be reproduced, except in full, without prior written permission of the Company. 除非另有說明，此報告結果僅對測試之樣品負責，未經本公司許可，不得部分複製。
This document is issued by the Company subject to its General Conditions of Service printed overleaf, available on request or accessible at www.sgs.com/terms_and_conditions.htm and, for electronic format documents, subject to Terms and Conditions for Electronic Documents at www.sgs.com/en/Terms-and-Conditions/Terms-e-Document. Attention is drawn to the limitation of liability, indemnification and jurisdiction issues defined therein. Any holder of this document is advised that information contained hereon reflects the Company's findings at the time of its intervention only and within the limits of Client's instructions, if any. The Company's sole responsibility is to its Client and this document does not exonerate parties to a transaction from exercising all their rights and obligations under the transaction documents. This document cannot be reproduced except in full, without prior written approval of the Company. Any unauthorized alteration, forgery or falsification of the content or appearance of this document is unlawful and offenders may be prosecuted to the fullest extent of the law.



Test Report

Applicant: Littelfuse Philippines Inc.
LIMA Technology Center, Lipa City,
Malvar, Batangas

Number : TWNC00300507
Date : Mar 06, 2013

Sample Description:

One (1) group of submitted samples said to be :
Part Description : Element - (Silver Clad Cu Wire with 2% Ag) 082685
Part Number : 082xxx
Date Sample Received : Feb 26, 2013
Date Test Started : Feb 26, 2013

Test Conducted :

As requested by the applicant, for details please refer to attached pages.

Authorized by:
On Behalf of Intertek Testing Services
Taiwan Limited



K. Y. Liang
Director



Page 1 of 4

Intertek Testing Services Taiwan Ltd.

8F., No. 423, Ruiguang Rd., Neihu District, Taipei 11492, Taiwan, R.O.C.

全國公證檢驗股份有限公司

11492 台北市內湖區瑞光路 423 號 8 樓

Tel: (+886-2) 6602-2888 · 2797-8885 Fax: (+886-2) 6602-2410

Number : TWNC00300507

Test Conducted

(I) Test Result Summary:

<u>Test Item</u>	<u>Unit</u>	<u>Test Method</u>	<u>Result</u>	<u>RL</u>
			<u>Silvery metal wire</u>	
Heavy Metal				
Cadmium (Cd) content	ppm	With reference to IEC 62321: 2008, by microwave digestion and determined by ICP-OES.	ND	2
Lead (Pb) content	ppm	With reference to IEC 62321: 2008, by microwave digestion and determined by ICP-OES.	ND	2
Mercury (Hg) content	ppm	With reference to IEC 62321: 2008, by microwave digestion and determined by ICP-OES.	ND	2
Chromium VI (Cr ⁶⁺) content	mg/kg with 50 cm ²	With reference to IEC 62321: 2008, by boiling water extraction and determined by UV-Vis Spectrophotometer.	Negative	0.02

Remarks: ppm = parts per million based on weight of tested sample = mg/kg
 ND = Not detected
 RL = Reporting Limit, Quantitation limit of analyte in sample
 mg/kg with 50cm² = milligram per kilogram with 50 square centimeter
 Negative = A negative test result indicated positive observation was not found at the time of Test.

Responsibility of Chemist: Kevin Liu/ Irene Chiou

Date Sample Received : Feb 26, 2013
 Test Period : Feb 26, 2013 To Mar 01, 2013

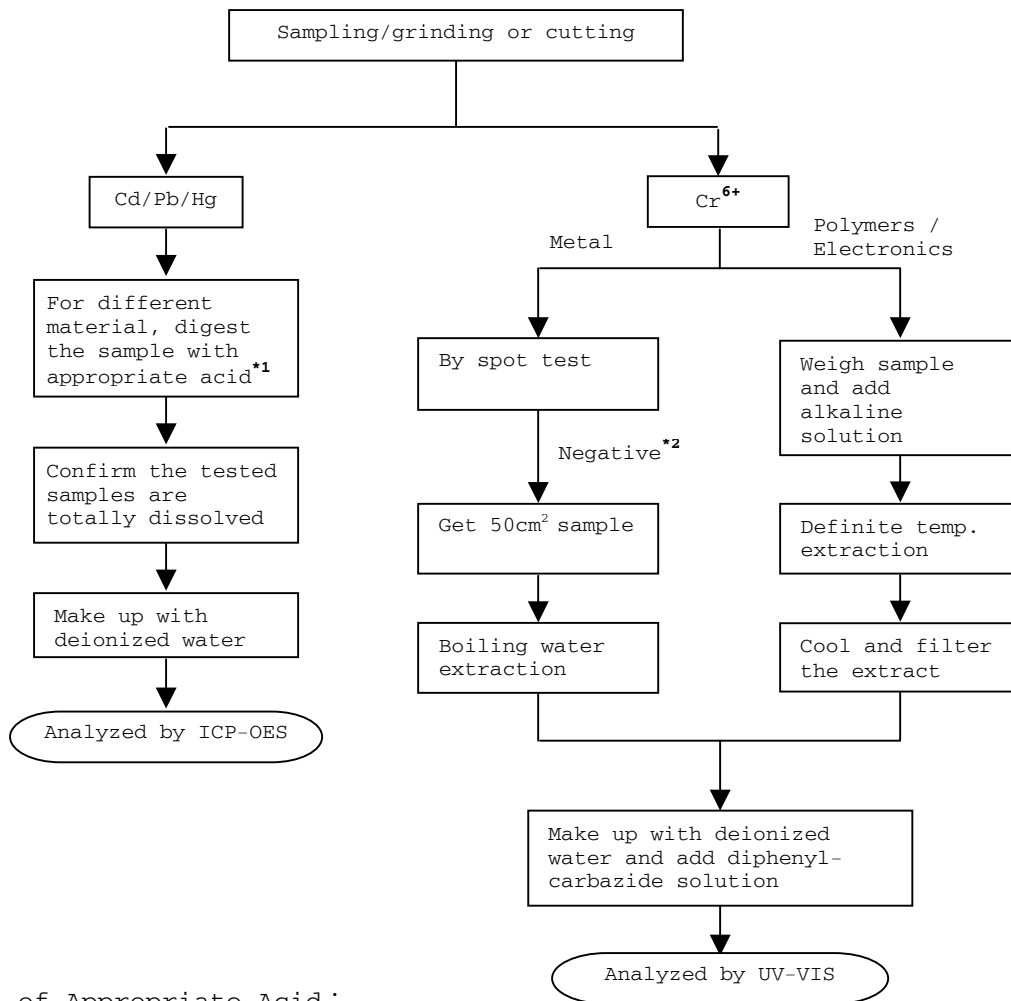
(II) Limit:
 RoHS Limit

<u>Restricted Substances</u>	<u>Limits</u>
Cadmium (Cd) content	0.01% (100ppm)
Lead (Pb) content	0.1% (1000ppm)
Mercury (Hg) content	0.1% (1000ppm)
Chromium VI (Cr ⁶⁺) content	0.1% (1000ppm)

The above limits were quoted from Annex II of 2011/65/EU for homogeneous material.

Test Conducted

(III) Measurement Flowchart:
Test For Cd/Pb/Hg/Chromium (VI)
Reference Standard: IEC 62321 edition 1.0:2008



Remarks:

*1: List of Appropriate Acid:

Material	Acid Added for Digestion
Polymers	HNO ₃ , HCl, HF, H ₂ O ₂ , H ₃ BO ₃
Metals	HNO ₃ , HCl, HF
Electronics	HNO ₃ , HCl, H ₂ O ₂ , HBF ₄

*2: If the result of spot test is positive, Chromium VI would be determined as detected.

End of Report

This report is made solely on the basis of your instructions and/or information and materials supplied by you. It is not intended to be a recommendation for any particular course of action. Intertek does not accept a duty of care or any other responsibility to any person other than the client in respect of this report and only accepts liability to the client insofar as is expressly contained in the terms and conditions governing Intertek's provision of services to you. Intertek makes no warranties or representations either express or implied with respect to this report save as provided for in those terms and conditions. We have aimed to conduct the Review on a diligent and careful basis and we do not accept any liability to you for any loss arising out of or in connection with this report, in contract, tort, by statute or otherwise, except in the event of our gross negligence or wilful misconduct.



Number : TWNC00300507

Test Conducted

Photo





Test Report

Number : TWNC00300508
Applicant: Littelfuse Philippines Inc. Date : Mar 06, 2013
LIMA Technology Center, Lipa City,
Malvar, Batangas

Sample Description:

One (1) group of submitted samples said to be :
Part Description : Element - (Silver clad Cu wire with 5% Ag) 082686
Part Number : 082xxx
Date Sample Received : Feb 26, 2013
Date Test Started : Feb 26, 2013

Test Conducted :

As requested by the applicant, for details please refer to attached pages.

Authorized by:
On Behalf of Intertek Testing Services
Taiwan Limited



K. Y. Liang
Director



Intertek Testing Services Taiwan Ltd.

8F., No. 423, Ruiguang Rd., Neihu District, Taipei 11492, Taiwan, R.O.C.

全國公證檢驗股份有限公司

11492 台北市內湖區瑞光路 423 號 8 樓

Tel: (+886-2) 6602-2888 · 2797-8885 Fax: (+886-2) 6602-2410

Number : TWNC00300508

Test Conducted

(I) Test Result Summary:

<u>Test Item</u>	<u>Unit</u>	<u>Test Method</u>	<u>Result</u>	<u>RL</u>
			<u>Silvery metal wire</u>	
Heavy Metal				
Cadmium (Cd) content	ppm	With reference to IEC 62321: 2008, by microwave digestion and determined by ICP-OES.	ND	2
Lead (Pb) content	ppm	With reference to IEC 62321: 2008, by microwave digestion and determined by ICP-OES.	ND	2
Mercury (Hg) content	ppm	With reference to IEC 62321: 2008, by microwave digestion and determined by ICP-OES.	ND	2
Chromium VI (Cr ⁶⁺) content	mg/kg with 50 cm ²	With reference to IEC 62321: 2008, by boiling water extraction and determined by UV-Vis Spectrophotometer.	Negative	0.02

Remarks: ppm = parts per million based on weight of tested sample = mg/kg
 ND = Not detected
 RL = Reporting Limit, Quantitation limit of analyte in sample
 mg/kg with 50cm² = milligram per kilogram with 50 square centimeter
 Negative = A negative test result indicated positive observation was not found at the time of Test.

Responsibility of Chemist: Kevin Liu/ Irene Chiou

Date Sample Received : Feb 26, 2013
 Test Period : Feb 26, 2013 To Mar 01, 2013

(II) Limit:
 RoHS Limit

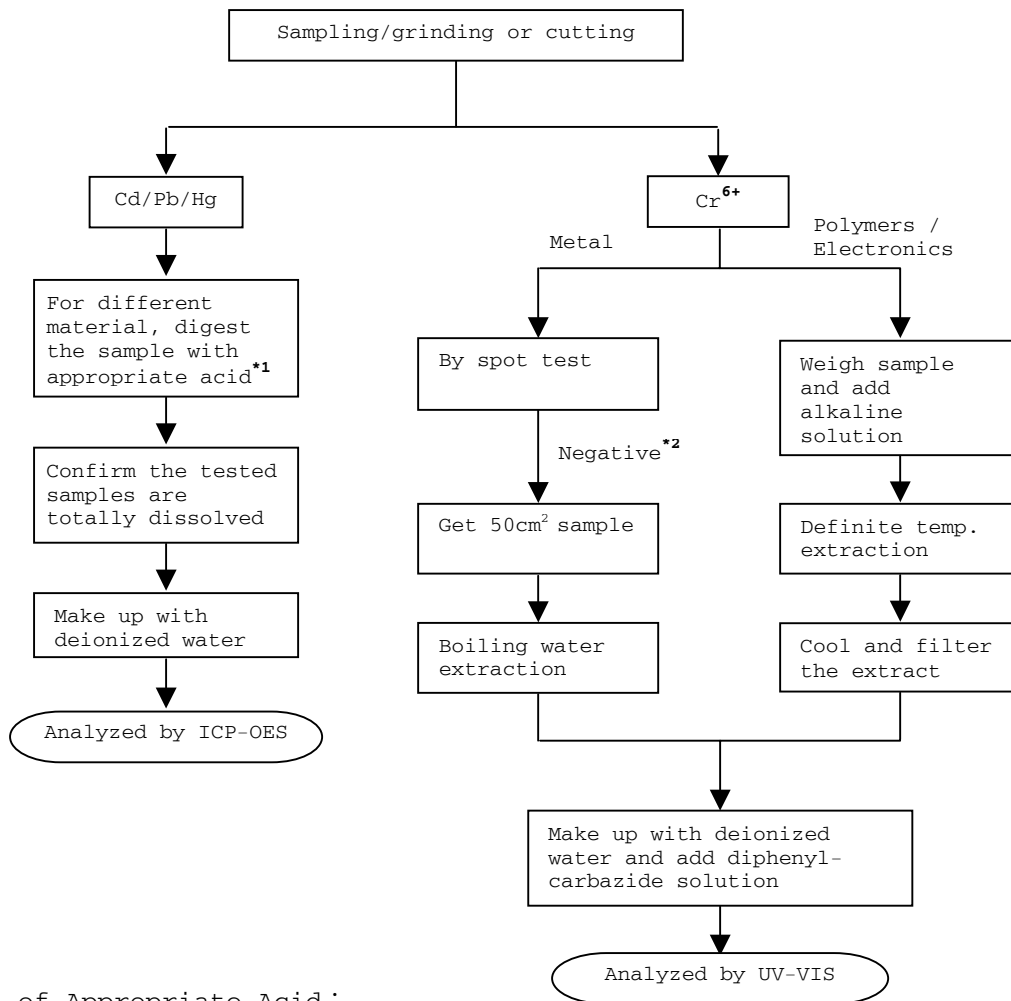
<u>Restricted Substances</u>	<u>Limits</u>
Cadmium (Cd) content	0.01% (100ppm)
Lead (Pb) content	0.1% (1000ppm)
Mercury (Hg) content	0.1% (1000ppm)
Chromium VI (Cr ⁶⁺) content	0.1% (1000ppm)

The above limits were quoted from Annex II of 2011/65/EU for homogeneous material.



Test Conducted

(III) Measurement Flowchart:
Test For Cd/Pb/Hg/Chromium (VI)
Reference Standard: IEC 62321 edition 1.0:2008



Remarks:

*1: List of Appropriate Acid:

Material	Acid Added for Digestion
Polymers	HNO ₃ , HCl, HF, H ₂ O ₂ , H ₃ BO ₃
Metals	HNO ₃ , HCl, HF
Electronics	HNO ₃ , HCl, H ₂ O ₂ , HBF ₄

*2: If the result of spot test is positive, Chromium VI would be determined as detected.

End of Report

This report is made solely on the basis of your instructions and/or information and materials supplied by you. It is not intended to be a recommendation for any particular course of action. Intertek does not accept a duty of care or any other responsibility to any person other than the client in respect of this report and only accepts liability to the client insofar as is expressly contained in the terms and conditions governing Intertek's provision of services to you. Intertek makes no warranties or representations either express or implied with respect to this report save as provided for in those terms and conditions. We have aimed to conduct the Review on a diligent and careful basis and we do not accept any liability to you for any loss arising out of or in connection with this report, in contract, tort, by statute or otherwise, except in the event of our gross negligence or wilful misconduct.



Number : TWNC00300508

Test Conducted

Photo



Polyfil AG
Gina Gregorio
Oberallmendstrasse 20A

6300 Zug / Switzerland

Fürth, 2012-12-19

Test report No. FUHL1236935

Testing of a material sample according to the RoHS directive 2011/65/EC

Sample description: Ni36Fe64MAg wire; part no. 962464; batch 497255Rev.B

Arrival in lab: 2012-012-04; Period of XRF analysis incl. sample preparation and photo documentation: 2012-12-07 – 2012-12-10
Head of Inorganic Lab: Claudia List

Copying this test report is permitted only in agreement with the contracted lab. The test results refer only to the tested item.
This report consists of 6 page(s).
The test methods signed with * are not listed in the attachment of the accreditation certificate.

Conclusion based on tested item

Test order	Status
testing according to the RoHS directive 2011/65/EC	conform [°]

[°] Please see overview of test results

- Test results see next pages -

Sample description: Ni36Fe64MAg wire; part no. 962464; batch 497255Rev.B

nM = non Metal

M = Metal

cM = composite Material

List of component parts:

Sample No.	Part No.	Material	Description
236935	1	M	Ni36Fe64MAg wire; part no. 962464; batch 497255Rev.B

Sample description: Ni36Fe64MAg wire; part no. 962464; batch 497255Rev.B

Comment

LOD = Limit of Detection
 BL = Below Limit
 OL = Over Limit
 X = Inconclusive, further test necessary
 σ = Standard deviation

 CS = Composite sample

Remark:

Results were obtained by EDXRF for primary screening. Additional chemical testing using ICP (for Cd, Pb), AAS (for Hg), IC-UC/VIS (for CrVI) and GC/MS (for PBBs/PBDEs) are recommended, if the concentration exceeds the below warning value according to IEC 62321.

Element	Unit	non - metal	metal
Cd	mg / kg	$BL \leq (70-3\sigma) < X < (130+3\sigma) \leq OL$	$BL \leq (70-3\sigma) < X < (130+3\sigma) \leq OL$
Pb	mg / kg	$BL \leq (700-3\sigma) < X < (1300+3\sigma) \leq OL$	$BL \leq (700-3\sigma) < X < (1300+3\sigma) \leq OL$
Hg	mg / kg	$BL \leq (700-3\sigma) < X < (1300+3\sigma) \leq OL$	$BL \leq (700-3\sigma) < X < (1300+3\sigma) \leq OL$
Br	mg / kg	$BL \leq (300-3\sigma) < X$	--
Cr	mg / kg	$BL \leq (700-3\sigma) < X$	$BL \leq (700-3\sigma) < X$

Element	Unit	composite material
Cd	mg / kg	$LOD < X < (150+3\sigma) \leq OL$
Pb	mg / kg	$BL \leq (500-3\sigma) < X < (1500+3\sigma) \leq OL$
Hg	mg / kg	$BL \leq (500-3\sigma) < X < (1500+3\sigma) \leq OL$
Br	mg / kg	$BL \leq (250-3\sigma) < X$
Cr	mg / kg	$BL \leq (500-3\sigma) < X$

Sample description: Ni36Fe64MAg wire; part no. 962464; batch 497255Rev.B

1. XRF screening

Method: XRF according to IEC 62321:2008*

Sample No.	Part No.	Pb	Hg	Cd	Cr _{total}	Br	Status
236935	1	BL	BL	BL	BL	--	conform

Comment:

Elements	RoHS-limit value
Lead (Pb)	1000 mg/kg
Mercury (Hg)	1000 mg/kg
Cadmium (Cd)	100 mg/kg
Chromium VI (Cr VI)	1000 mg/kg
Polybrominated Biphenyle (PBBs)	1000 mg/kg
Polybrominated Diphenyl ether (PBDEs)	1000 mg/kg

Intertek Consumer Goods GmbH

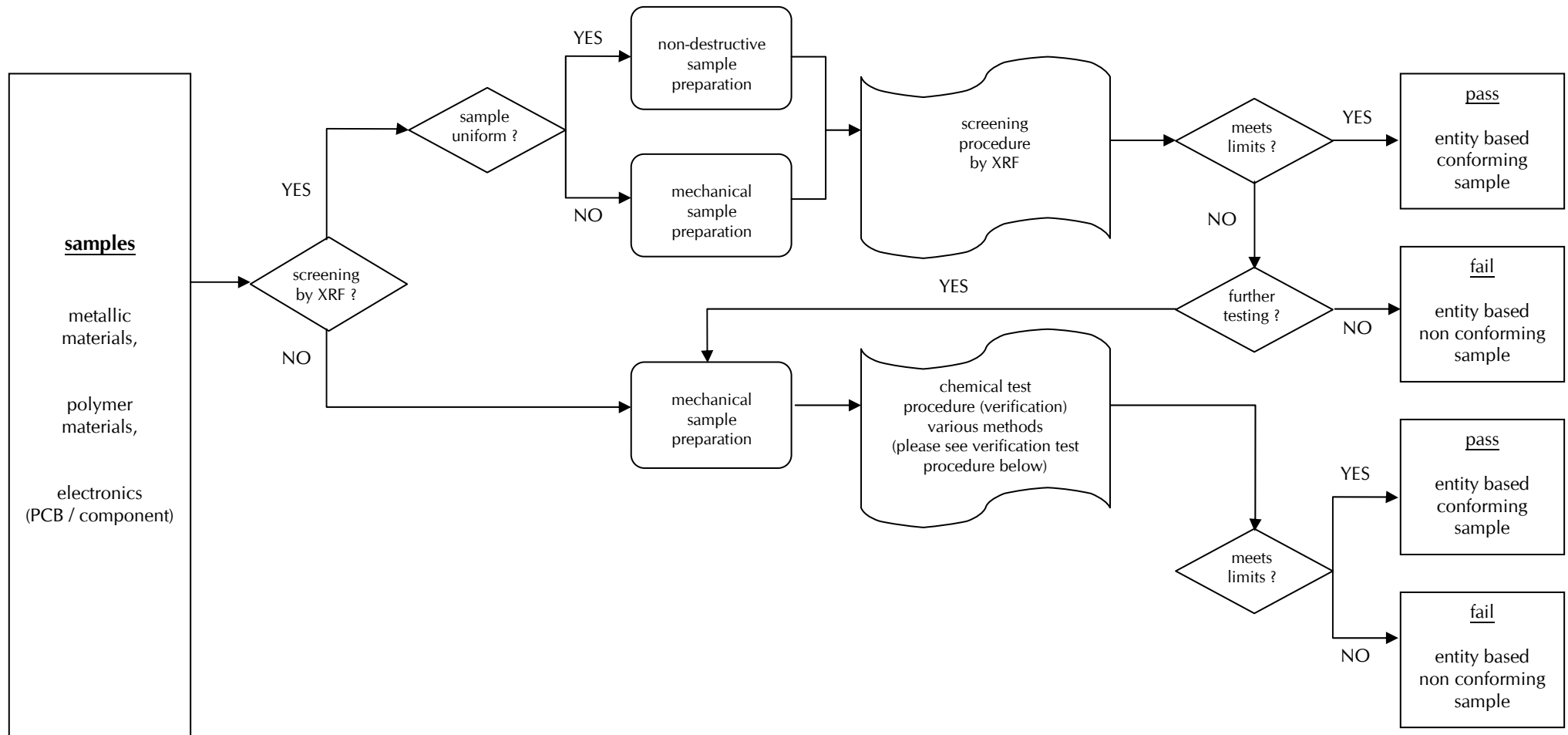


Prüfleitung / Lab Manager

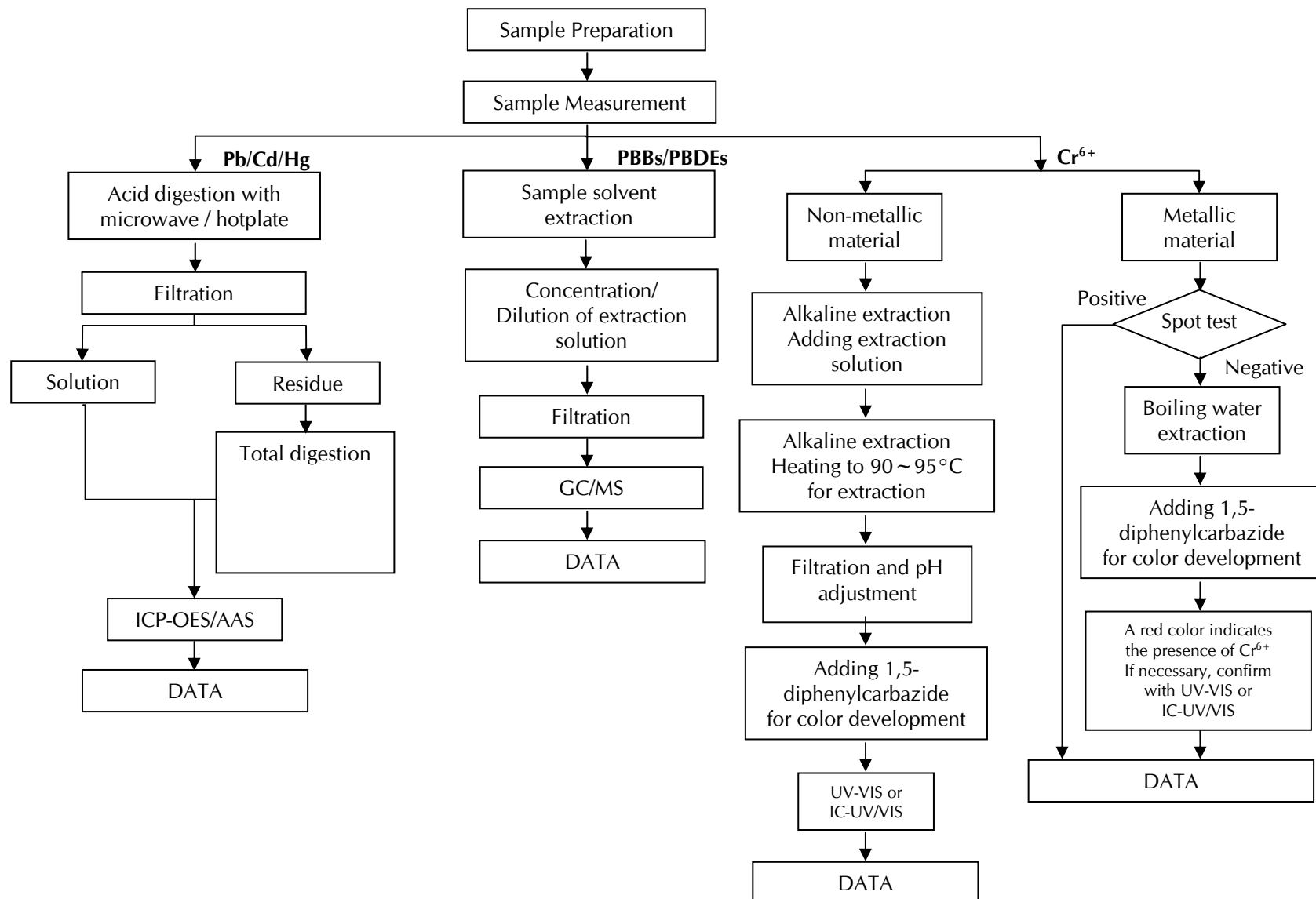
☐ A. Breunig, ☐ K. Grönhardt, ☐ Dr. K. Laue-Schuler, ☒ C. List, ☐ D. Löw
☐ R. Micolay, ☐ M. Neumeister, ☐ Dr. R. Rätze, ☐ K. Scharrer, ☐ M. Tutsch

- Flow charts see next page(s) -

Test procedure



Verification test procedure





Intertek Consumer Goods GmbH · Würzburger Straße 152 · 90766 Fürth ·

Polyfil AG
Gina Gregorio
Oberallmendstrasse 20A

6300 Zug / Switzerland

Fürth, 2012-12-19

Test report No. FUHL1236937

Testing of a material sample according to the RoHS directive 2011/65/EC

Sample description: Ni42Fe58MCuMAg wire; part no. HL26351

Arrival in lab: 2012-012-04; Period of XRF analysis incl. sample preparation and photo documentation: 2012-12-07 – 2012-12-10
Head of Inorganic Lab: Claudia List

Copying this test report is permitted only in agreement with the contracted lab. The test results refer only to the tested item.
This report consists of 6 page(s).
The test methods signed with * are not listed in the attachment of the accreditation certificate.

Conclusion based on tested item

Test order	Status
testing according to the RoHS directive 2011/65/EC	conform [°]

[°] Please see overview of test results

- Test results see next pages -

Sample description: Ni42Fe58MCuMAg wire; part no. HL26351

nM = non Metal

M = Metal

cM = composite Material

List of component parts:

Sample No.	Part No.	Material	Description
236937	1	M	Ni42Fe58MCuMAg wire; part no. HL26351

Sample description: Ni42Fe58MCuMAg wire; part no. HL26351

Comment

LOD = Limit of Detection
 BL = Below Limit
 OL = Over Limit
 X = Inconclusive, further test necessary
 σ = Standard deviation
 CS = Composite sample

Remark:

Results were obtained by EDXRF for primary screening. Additional chemical testing using ICP (for Cd, Pb), AAS (for Hg), IC-UC/VIS (for CrVI) and GC/MS (for PBBs/PBDEs) are recommended, if the concentration exceeds the below warning value according to IEC 62321.

Element	Unit	non - metal	metal
Cd	mg / kg	$BL \leq (70-3\sigma) < X < (130+3\sigma) \leq OL$	$BL \leq (70-3\sigma) < X < (130+3\sigma) \leq OL$
Pb	mg / kg	$BL \leq (700-3\sigma) < X < (1300+3\sigma) \leq OL$	$BL \leq (700-3\sigma) < X < (1300+3\sigma) \leq OL$
Hg	mg / kg	$BL \leq (700-3\sigma) < X < (1300+3\sigma) \leq OL$	$BL \leq (700-3\sigma) < X < (1300+3\sigma) \leq OL$
Br	mg / kg	$BL \leq (300-3\sigma) < X$	--
Cr	mg / kg	$BL \leq (700-3\sigma) < X$	$BL \leq (700-3\sigma) < X$

Element	Unit	composite material
Cd	mg / kg	$LOD < X < (150+3\sigma) \leq OL$
Pb	mg / kg	$BL \leq (500-3\sigma) < X < (1500+3\sigma) \leq OL$
Hg	mg / kg	$BL \leq (500-3\sigma) < X < (1500+3\sigma) \leq OL$
Br	mg / kg	$BL \leq (250-3\sigma) < X$
Cr	mg / kg	$BL \leq (500-3\sigma) < X$

Sample description: Ni42Fe58MCuMAg wire; part no. HL26351

1. XRF screening

Method: XRF according to IEC 62321:2008*

Sample No.	Part No.	Pb	Hg	Cd	Cr _{total}	Br	Status
236937	1	BL	BL	BL	BL	--	conform

Comment:

Elements	RoHS-limit value
Lead (Pb)	1000 mg/kg
Mercury (Hg)	1000 mg/kg
Cadmium (Cd)	100 mg/kg
Chromium VI (Cr VI)	1000 mg/kg
Polybrominated Biphenyle (PBBs)	1000 mg/kg
Polybrominated Diphenyl ether (PBDEs)	1000 mg/kg

Intertek Consumer Goods GmbH

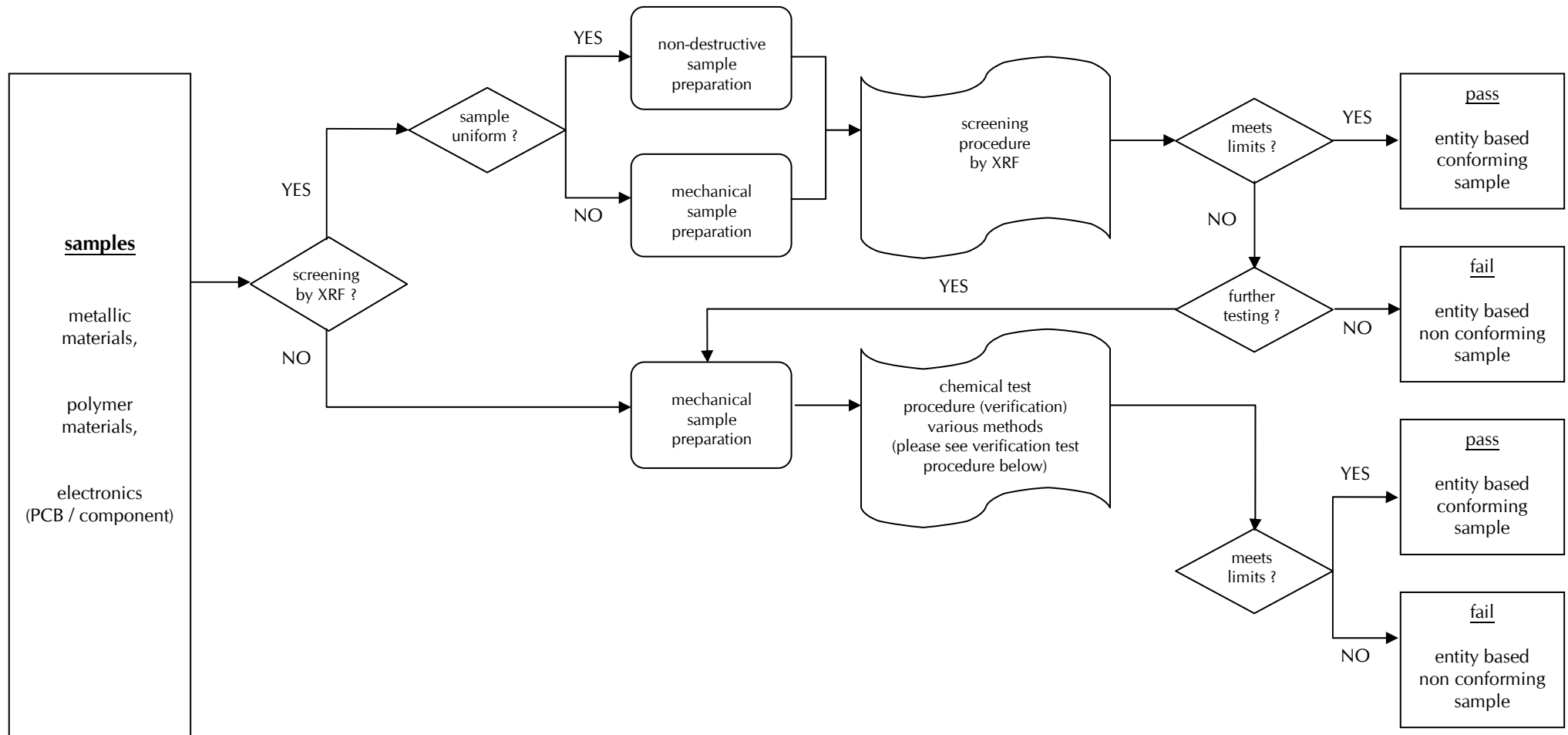


Prüfleitung / Lab Manager

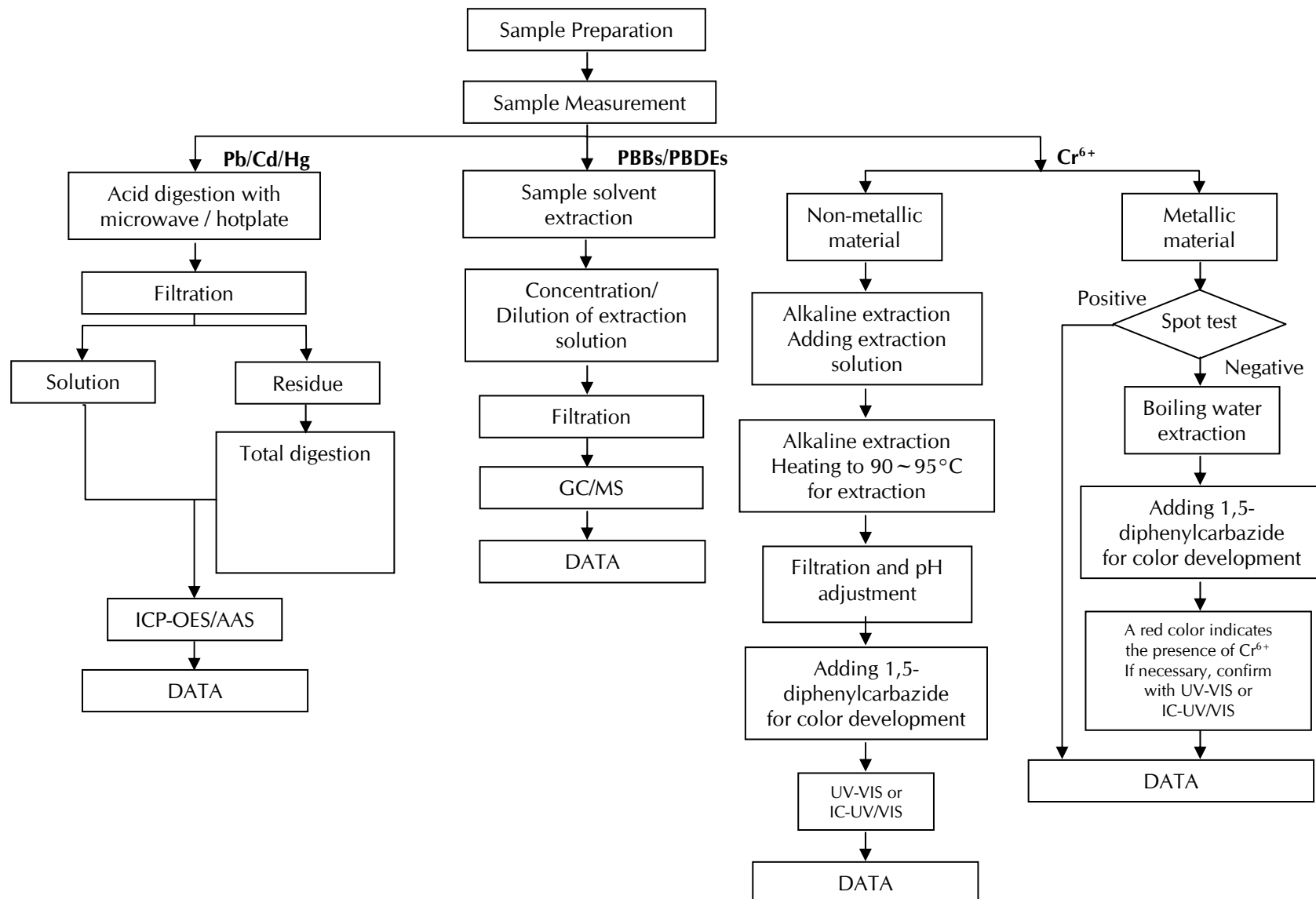
☐ A. Breunig, ☐ K. Grönhardt, ☐ Dr. K. Laue-Schuler, ☒ C. List, ☐ D. Löw
☐ R. Micolay, ☐ M. Neumeister, ☐ Dr. R. Rätze, ☐ K. Scharrer, ☐ M. Tutsch

- Flow charts see next page(s) -

Test procedure



Verification test procedure



Test Report

Applicant: Littelfuse Philippines Inc.
LIMA Technology Center, Lipa City,
Malvar, Batangas

Number : TWNC00340077
Date : Nov 07, 2013

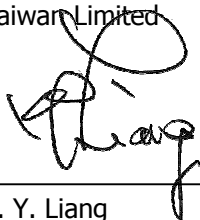
Sample Description:

One (1) group of submitted samples said to be :
Part Description : Solder
Part Number : 692321
Date Sample Received : Oct 30, 2013
Date Test Started : Oct 31, 2013

Test Conducted :

As requested by the applicant, for details please refer to attached pages.

Authorized by:
On Behalf of Intertek Testing Services
Taiwan Limited



K. Y. Liang
Director



Test Report

Number: TWNC00340077

Test Conducted

Test Result Summary:

Test Result Summary:				
Test Item	Unit	Test Method	Result	RL
			Silvery metal	
Heavy Metal				
Cadmium (Cd) content	ppm	With reference to IEC 62321-5: 2013, by microwave or acid digestion and determined by ICP-OES.	ND	2
Lead (Pb) content	ppm	With reference to IEC 62321-5: 2013, by microwave or acid digestion and determined by ICP-OES.	880880	2
Mercury (Hg) content	ppm	With reference to IEC 62321-4: 2013, by microwave or acid digestion and determined by ICP-OES.	ND	2
Chromium VI (Cr ⁶⁺) content	mg/kg with 50 cm ²	With reference to IEC 62321: 2008, by boiling water extraction and determined by UV-Vis Spectrophotometer.	Negative	0.02

Remarks: ppm = Parts per million based on weight of tested sample = mg/kg

ND = Not detected

RL = Reporting Limit, quantitation limit of analyte in sample

mg/kg with 50cm² = Milligram per kilogram with 50 square centimeter

Negative = A negative test result indicated positive observation was not found at the time of test.

Responsibility of Chemist: Kevin Liu/ Irene Chiou

Date Sample Received : Oct 30, 2013

Test Period : Oct 31, 2013 to Nov 07, 2013

RoHS Limit

Restricted Substances	Limits
Cadmium (Cd) content	0.01% (100ppm)
Lead (Pb) content	0.1% (1000ppm)
Mercury (Hg) content	0.1% (1000ppm)
Chromium VI (Cr ⁶⁺) content	0.1% (1000ppm)

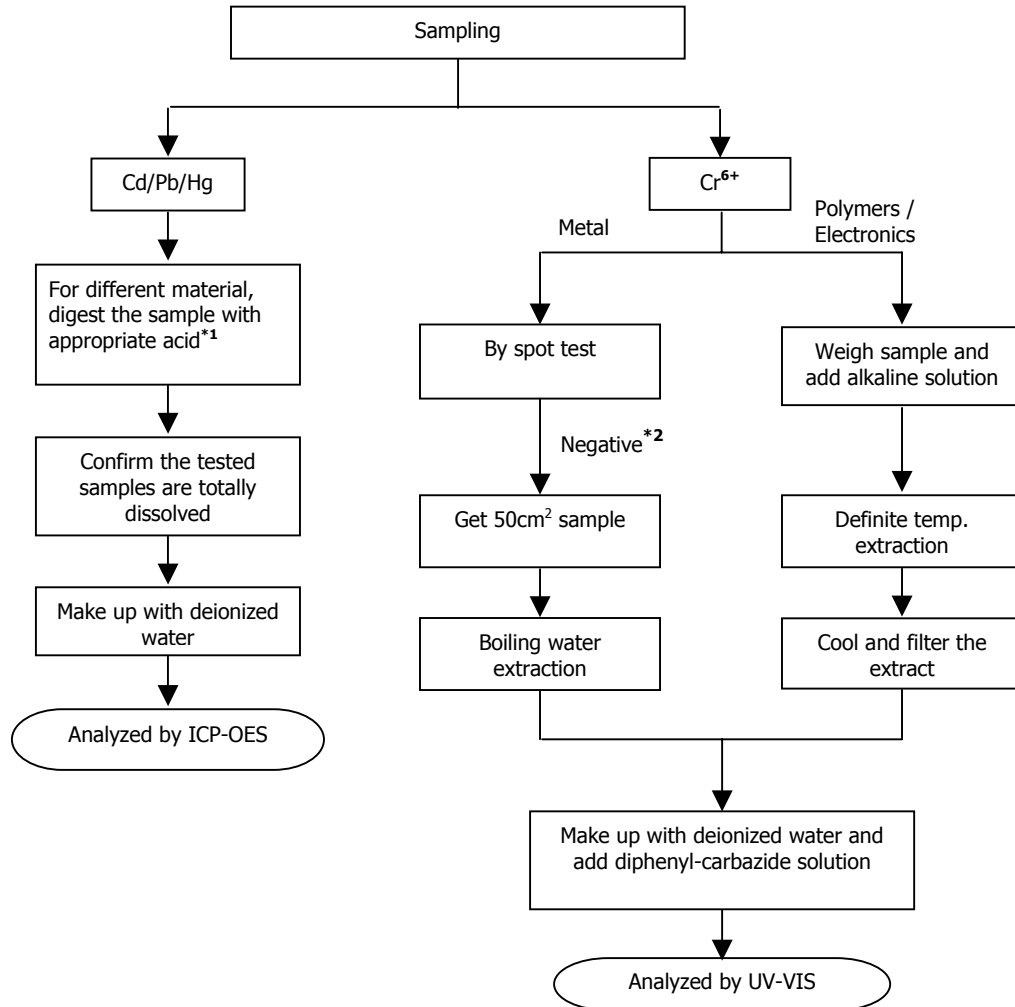
The above limits were quoted from Annex II of 2011/65/EU for homogeneous material.



Test Report

Number: TWNC00340077

Test Conducted
 Test For Cd/Pb/Hg/Chromium (VI)
 Reference Standard : Cd/Pb: IEC 62321-5:2013; Hg: IEC 62321-4:2013;
 Chromium (VI): IEC 62321:2008



Test Report

Number: TWNC00340077



End of Report

This report is made solely on the basis of your instructions and/or information and materials supplied by you. It is not intended to be a recommendation for any particular course of action. Intertek does not accept a duty of care or any other responsibility to any person other than the Client in respect of this report and only accepts liability to the Client insofar as is expressly contained in the terms and conditions governing Intertek's provision of services to you. Intertek makes no warranties or representations either express or implied with respect to this report save as provided for in those terms and conditions. We have aimed to conduct the Review on a diligent and careful basis and we do not accept any liability to you for any loss arising out of or in connection with this report, in contract, tort, by statute or otherwise, except in the event of our gross negligence or wilful misconduct.



Page 4 of 6

Intertek Testing Services Taiwan Ltd.

8F., No. 423, Ruiguang Rd., Neihu District, Taipei 11492, Taiwan, R.O.C.

全國公證檢驗股份有限公司

11492 台北市內湖區瑞光路 423 號 8 樓

Tel: (+886-2) 6602-2888 · 2797-8885 Fax: (+886-2) 6602-2410

Test Report

Number : TWNC00317744S1

Applicant: Littelfuse Philippines Inc.
LIMA Technology Center, Lipa City,
Malvar, Batangas

Date : Jun 27, 2013
This is to supersede report
NO. TWNC00317744 dated
Jun 19, 2013

Sample Description:

One (1) group of submitted samples said to be :

Part Description : Anaerobic Adhesive
Part Number : 087266
Date Sample Received : Jun 11, 2013
Date Test Started : Jun 13, 2013

Test Conducted :

As requested by the applicant, for details please refer to attached pages.

Authorized by:
On Behalf of Intertek Testing Services
Taiwan Limited



K. Y. Liang
Director



Test Report

Number : TWNC00317744S1

Test Conducted

Test Result Summary:

Test Result Summary:				
Test Item	Unit	Test Method	Result	RL
			Green liquid	
Heavy Metal				
Cadmium (Cd) content	ppm	With reference to IEC 62321: 2008, by microwave digestion and determined by ICP-OES.	ND	2
Lead (Pb) content	ppm	With reference to IEC 62321: 2008, by microwave digestion and determined by ICP-OES.	ND	2
Mercury (Hg) content	ppm	With reference to IEC 62321: 2008, by microwave digestion and determined by ICP-OES.	ND	2
Antimony (Sb) Content	ppm	With reference to USEPA 3052, by microwave digestion and determined by ICP-OES.	ND	2
Chromium VI (Cr ⁶⁺) content	ppm	With reference to IEC 62321: 2008, by alkaline digestion and determined by UV-Vis Spectrophotometer.	ND	1
Polybrominated Biphenyls (PBBs)				
Monobrominated Biphenyls (MonoBB)	ppm	With reference to IEC 62321: 2008, by solvent extraction and determined by GC-MS and further HPLC-DAD confirmation when necessary.	ND	5
Dibrominated Biphenyls (DiBB)	ppm		ND	5
Tribrominated Biphenyls (TriBB)	ppm		ND	5
Tetrabrominated Biphenyls (TetraBB)	ppm		ND	5
Pentabrominated Biphenyls (PentaBB)	ppm		ND	5
Hexabrominated Biphenyls (HexaBB)	ppm		ND	5
Heptabrominated Biphenyls (HeptaBB)	ppm		ND	5
Octabrominated Biphenyls (OctaBB)	ppm		ND	5
Nonabrominated Biphenyls (NonaBB)	ppm		ND	5
Decabrominated Biphenyl (DecaBB)	ppm		ND	5



Test Report

Number : TWNC00317744S1

Test Conducted

Test Item	Unit	Test Method	Result	RL
			Green liquid	
Polybrominated Diphenyl Ethers (PBDEs)				
Monobrominated Diphenyl Ethers (MonoBDE)	ppm	With reference to IEC 62321: 2008, by solvent extraction and determined by GC-MS and further HPLC-DAD confirmation when necessary.	ND	5
Dibrominated Diphenyl Ethers (DiBDE)	ppm		ND	5
Tribrominated Diphenyl Ethers (TriBDE)	ppm		ND	5
Tetrabrominated Diphenyl Ethers (TetraBDE)	ppm		ND	5
Pentabrominated Diphenyl Ethers (PentaBDE)	ppm		ND	5
Hexabrominated Diphenyl Ethers (HexaBDE)	ppm		ND	5
Heptabrominated Diphenyl Ethers (HeptaBDE)	ppm		ND	5
Octabrominated Diphenyl Ethers (OctaBDE)	ppm		ND	5
Nonabrominated Diphenyl Ethers (NonaBDE)	ppm		ND	5
Decabrominated Diphenyl Ether (DecaBDE)	ppm		ND	5
Halogen Content				
Fluorine (F)	ppm	With reference to EN 14582:2007 by calorimetric bomb with oxygen and determined by Ion Chromatograph.	ND	50
Chlorine (Cl)	ppm		244	50
Bromine (Br)	ppm		ND	50
Iodine (I)	ppm		ND	50
Phthalates				
Di(2-ethylhexyl) Phthalate (DEHP)	ppm	With reference to EN 14372: 2004, by solvent extraction and determined by GC-MS.	ND	10
Dibutyl Phthalate (DBP)	ppm		ND	10
Benzyl Butyl Phthalate (BBP)	ppm		ND	10
Diisobutyl Phthalate (DIBP)	ppm		ND	10
Others				
Hexabromocyclododecane (HBCDD)	ppm	With reference to USEPA 3540C, by solvent extraction and determined by GC-MS.	ND	10

Remarks: ppm = parts per million based on wet weight of tested sample = mg/kg
 ND = Not detected
 RL = Reporting Limit, Quantitation limit of analyte in sample

Responsibility of Chemist: Kevin Liu/ Irene Chiou/ Vico Lin

Date Sample Received : Jun 11, 2013
 Test Period : Jun 13, 2013 To Jun 26, 2013



Test Report

Number : TWNC00317744S1

Test Conducted

RoHS Limit

<u>Restricted Substances</u>	<u>Limits</u>
Cadmium (Cd) content	0.01% (100ppm)
Lead (Pb) content	0.1% (1000ppm)
Mercury (Hg) content	0.1% (1000ppm)
Chromium VI (Cr ⁶⁺) content	0.1% (1000ppm)
Polybrominated Biphenyls (PBBs)	0.1% (1000ppm)
Polybrominated Diphenyl Ethers (PBDEs)	0.1% (1000ppm)

The above limits were quoted from Annex II of 2011/65/EU for homogeneous material.

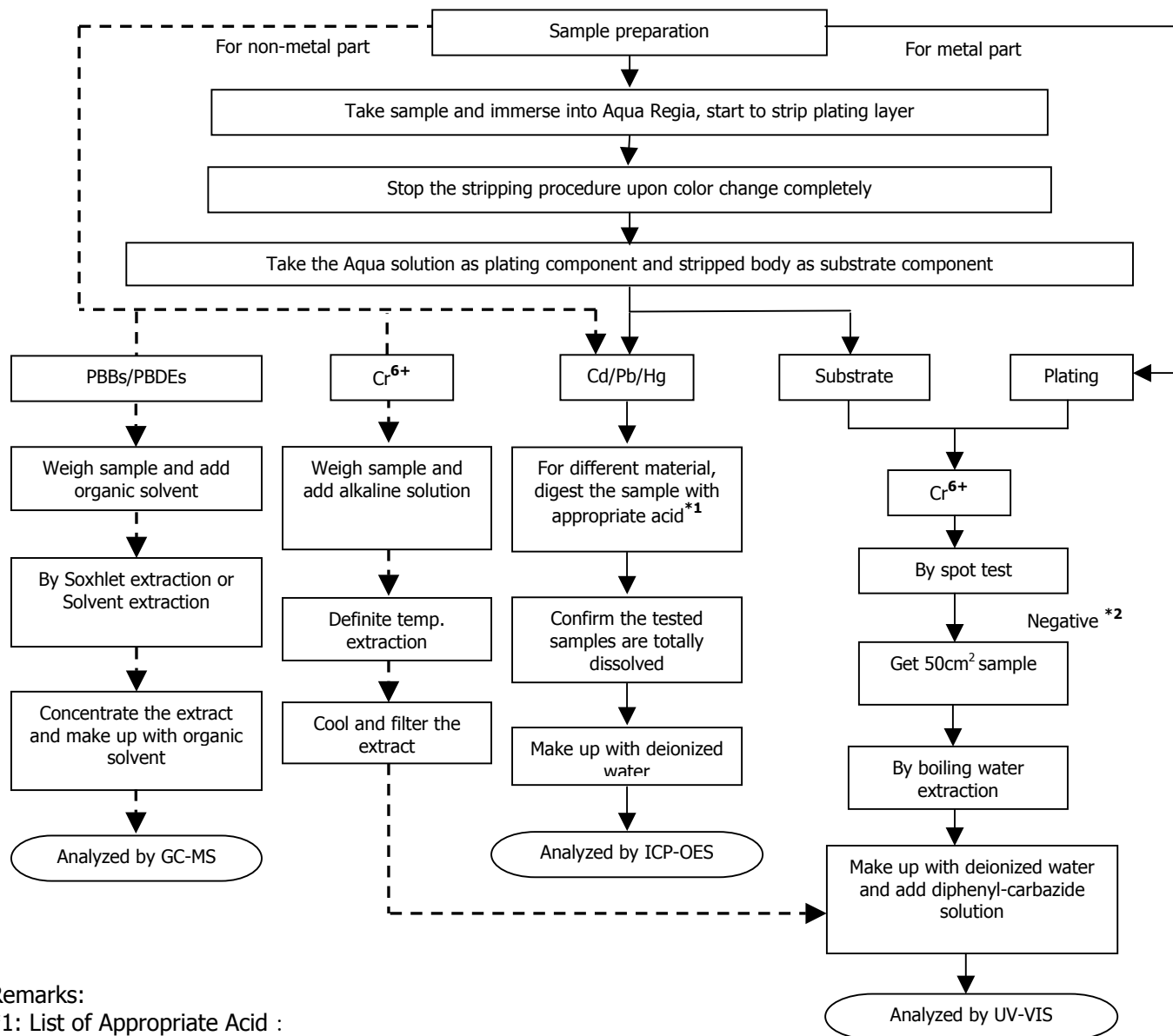


Test Report

Number : TWNC00317744S1

Test Conducted
Measurement Flowchart:

Test for Cd/Pb/Hg/Chromium (VI)/PBBs/PBDEs Contents
Reference Standard: IEC 62321 edition 1.0:2008



Remarks:

*1: List of Appropriate Acid :

Material	Acid Added for Digestion
Polymers	HNO ₃ , HCl, HF, H ₂ O ₂ , H ₃ BO ₃
Metals	HNO ₃ , HCl, HF
Electronics	HNO ₃ , HCl, H ₂ O ₂ , HBF ₄

*2: If the result of spot test is positive, Chromium VI would be determined as detected.



Test Report

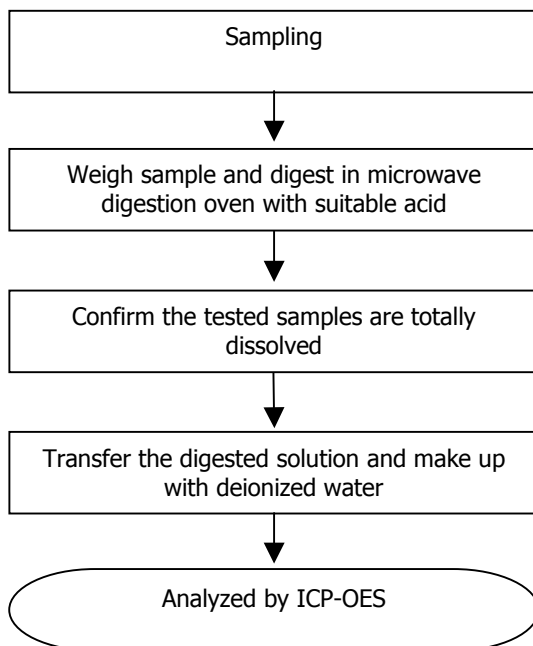
Number : TWNC00317744S1

Test Conducted

Measurement Flowchart:

Test for Heavy Metal (Sb) Contents

Reference Method : USEPA 3052



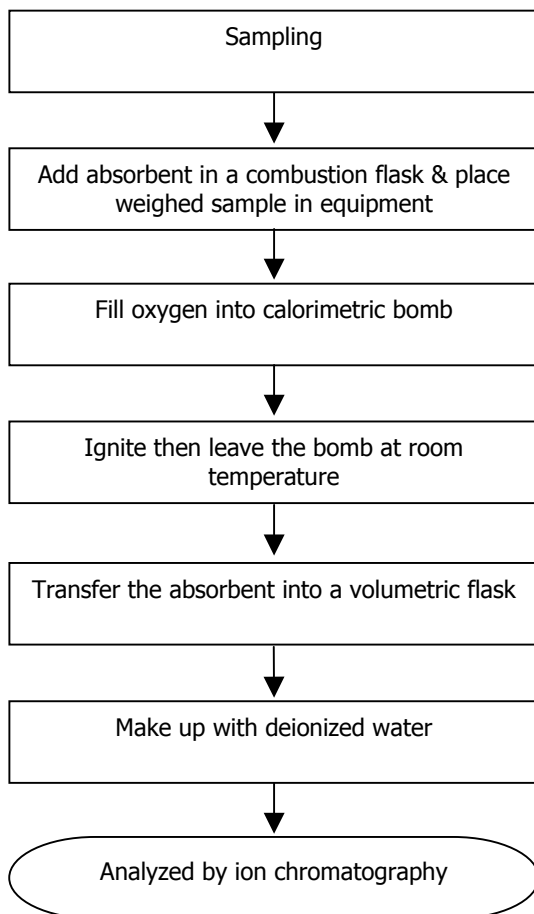
Test Report

Number : TWNC00317744S1

Test Conducted

Measurement Flowchart:

Test for Halogen Content
Reference Method : EN 14582



Test Report

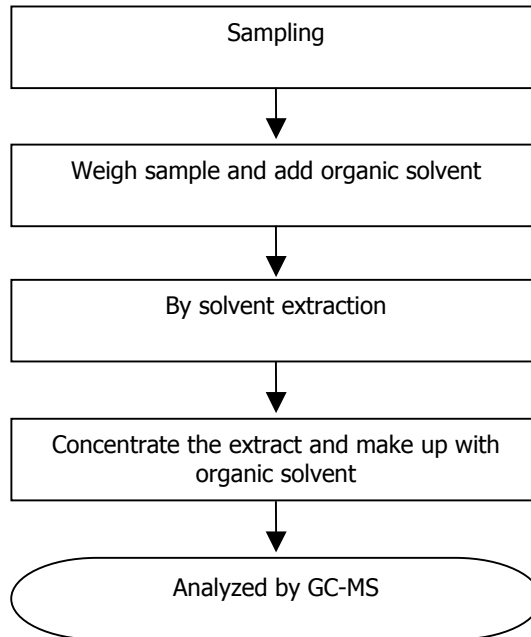
Number : TWNC00317744S1

Test Conducted

Measurement Flowchart:

Test for Phthalates Contents

Reference Method: EN 14372: 2004



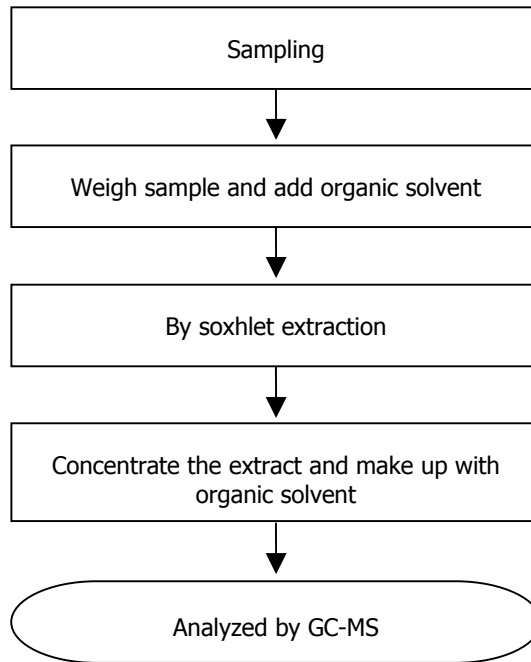
Test Report

Number : TWNC00317744S1

Test Conducted

Measurement Flowchart:

Test for Hexabromocyclododecane (HBCDD)
Reference Method : USEPA 3540C



Test Report

Number : TWNC00317744S1



End of Report

This report is made solely on the basis of your instructions and/or information and materials supplied by you. It is not intended to be a recommendation for any particular course of action. Intertek does not accept a duty of care or any other responsibility to any person other than the Client in respect of this report and only accepts liability to the Client insofar as is expressly contained in the terms and conditions governing Intertek's provision of services to you. Intertek makes no warranties or representations either express or implied with respect to this report save as provided for in those terms and conditions. We have aimed to conduct the Review on a diligent and careful basis and we do not accept any liability to you for any loss arising out of or in connection with this report, in contract, tort, by statute or otherwise, except in the event of our gross negligence or wilful misconduct.



Page 10 of 12

Intertek Testing Services Taiwan Ltd.

8F., No. 423, Ruiguang Rd., Neihu District, Taipei 11492, Taiwan, R.O.C.

全國公證檢驗股份有限公司

11492 台北市內湖區瑞光路 423 號 8 樓

Tel: (+886-2) 6602-2888 · 2797-8885 Fax: (+886-2) 6602-2410



Test Report

Applicant: Littelfuse Philippines Inc.
LIMA Technology Center, Lipa City,
Malvar, Batangas

Number : TWNC00306991
Date : Apr 16, 2013

Sample Description:

One (1) group of submitted samples said to be :
Part Description : Black Ink
Part Number : 425809
Date Sample Received : Apr 10, 2013
Date Test Started : Apr 11, 2013

Test Conducted :

As requested by the applicant, for details please refer to attached pages.

Authorized by:
On Behalf of Intertek Testing Services
Taiwan Limited



K. Y. Liang
Director



Page 1 of 10

Intertek Testing Services Taiwan Ltd.

8F., No. 423, Ruiguang Rd., Neihu District, Taipei 11492, Taiwan, R.O.C.

全國公證檢驗股份有限公司

11492 台北市內湖區瑞光路 423 號 8 樓

Tel: (+886-2) 6602-2888 · 2797-8885 Fax: (+886-2) 6602-2410

Test Conducted

(I) Test Result Summary:

Test Item	Unit	Test Method	Result	RL
			Black paste	
Heavy Metal				
Cadmium (Cd) Content	ppm	With reference to IEC 62321: 2008, by microwave digestion and determined by ICP-OES.	ND	2
Lead (Pb) Content	ppm	With reference to IEC 62321: 2008, by microwave digestion and determined by ICP-OES.	ND	2
Mercury (Hg) Content	ppm	With reference to IEC 62321: 2008, by microwave digestion and determined by ICP-OES.	ND	2
Chromium VI (Cr ⁶⁺) Content	ppm	With reference to IEC 62321: 2008, by alkaline digestion and determined by UV-Vis Spectrophotometer.	ND	1
Polybrominated Biphenyls (PBBs)				
Monobrominated Biphenyls (MonoBB)	ppm	With reference to IEC 62321: 2008, by solvent extraction and determined by GC-MS and further HPLC-DAD confirmation when necessary.	ND	5
Dibrominated Biphenyls (DiBB)	ppm		ND	5
Tribrominated Biphenyls (TriBB)	ppm		ND	5
Tetrabrominated Biphenyls (TetraBB)	ppm		ND	5
Pentabrominated Biphenyls (PentaBB)	ppm		ND	5
Hexabrominated Biphenyls (HexaBB)	ppm		ND	5
Heptabrominated Biphenyls (HeptaBB)	ppm		ND	5
Octabrominated Biphenyls (OctaBB)	ppm		ND	5
Nonabrominated Biphenyls (NonaBB)	ppm		ND	5
Decabrominated Biphenyl (DecaBB)	ppm		ND	5



Intertek Testing Services Taiwan Ltd.

8F., No. 423, Ruiguang Rd., Neihu District, Taipei 11492, Taiwan, R.O.C.

全國公證檢驗股份有限公司

11492 台北市內湖區瑞光路 423 號 8 樓

Tel: (+886-2) 6602-2888 · 2797-8885 Fax: (+886-2) 6602-2410

Test Conducted

Test Item	Unit	Test Method	Result	RL
			Black paste	
Polybrominated Diphenyl Ethers (PBDEs)				
Monobrominated Diphenyl Ethers (MonoBDE)	ppm	With reference to IEC 62321: 2008, by solvent extraction and determined by GC-MS and further HPLC-DAD confirmation when necessary.	ND	5
Dibrominated Diphenyl Ethers (DiBDE)	ppm		ND	5
Tribrominated Diphenyl Ethers (TriBDE)	ppm		ND	5
Tetrabrominated Diphenyl Ethers (TetraBDE)	ppm		ND	5
Pentabrominated Diphenyl Ethers (PentaBDE)	ppm		ND	5
Hexabrominated Diphenyl Ethers (HexaBDE)	ppm		ND	5
Heptabrominated Diphenyl Ethers (HeptaBDE)	ppm		ND	5
Octabrominated Diphenyl Ethers (OctaBDE)	ppm		ND	5
Nonabrominated Diphenyl Ethers (NonaBDE)	ppm		ND	5
Decabrominated Diphenyl Ether (DecaBDE)	ppm		ND	5
Phthalates				
Di(2-ethylhexyl) Phthalate (DEHP)	ppm	With reference to EN 14372: 2004, by solvent extraction and determined by GC-MS.	ND	50
Dibutyl Phthalate (DBP)	ppm		ND	50
Benzyl Butyl Phthalate (BBP)	ppm		ND	50
Halogen Content				
Fluorine (F)	ppm	With reference to EN 14582:2007 by calorimetric bomb with oxygen and determined by Ion Chromatograph.	ND	50
Chlorine (Cl)	ppm		ND	50
Bromine (Br)	ppm		ND	50
Iodine (I)	ppm		ND	50
Others				
Hexabromo cyclododecane (HBCDD)	ppm	With reference to USEPA 3540C, by solvent extraction and determined by GC-MS.	ND	10





Number : TWNC00306991

Test Conducted

Remarks: ppm = parts per million based on wet weight of tested sample = mg/kg
ND = Not detected
RL = Reporting Limit, Quantitation limit of analyte in sample

Responsibility of Chemist: Kevin Liu/ Irene Chiou/ Vico Lin

Date Sample Received : Apr 10, 2013

Test Period : Apr 11, 2013 to Apr 15, 2013

(II) Limit:

RoHS Limit

<u>Restricted Substances</u>	<u>Limits</u>
Cadmium (Cd) content	0.01% (100ppm)
Lead (Pb) content	0.1% (1000ppm)
Mercury (Hg) content	0.1% (1000ppm)
Chromium VI (Cr ⁶⁺) content	0.1% (1000ppm)
Polybrominated Biphenyls (PBBs)	0.1% (1000ppm)
Polybrominated Diphenyl Ehters (PBDEs)	0.1% (1000ppm)

The above limits were quoted from Annex II of 2011/65/EU for homogeneous material.



Page 4 of 10

Intertek Testing Services Taiwan Ltd.

8F., No. 423, Ruiguang Rd., Neihu District, Taipei 11492, Taiwan, R.O.C.

全國公證檢驗股份有限公司

11492 台北市內湖區瑞光路 423 號 8 樓

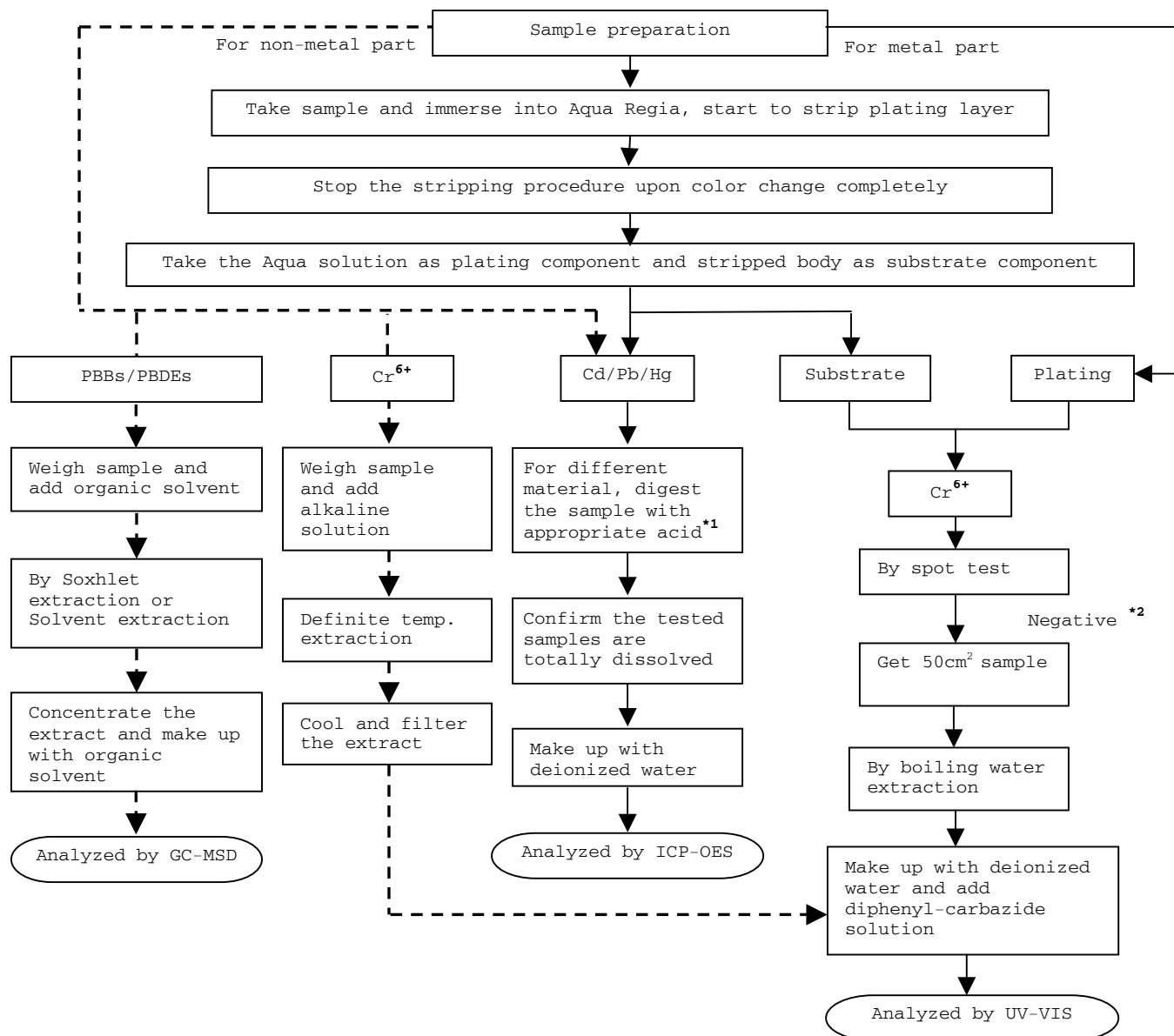
Tel: (+886-2) 6602-2888 · 2797-8885 Fax: (+886-2) 6602-2410

Test Conducted

(III) Measurement Flowchart:

Test for Cd/Pb/Hg/Chromium (VI)/PBBS/PBDES Contents

Reference Standard: IEC 62321 edition 1.0:2008



Number : TWNC00306991

Test Conducted

Remarks:

*1: List of Appropriate Acid:

Material	Acid Added for Digestion
Polymers	HNO ₃ , HCl, HF, H ₂ O ₂ , H ₃ BO ₃
Metals	HNO ₃ , HCl, HF
Electronics	HNO ₃ , HCl, H ₂ O ₂ , HBF ₄

*2: If the result of spot test is positive, Chromium VI would be determined as detected.



Page 6 of 10

Intertek Testing Services Taiwan Ltd.

8F., No. 423, Ruiguang Rd., Neihu District, Taipei 11492, Taiwan, R.O.C.

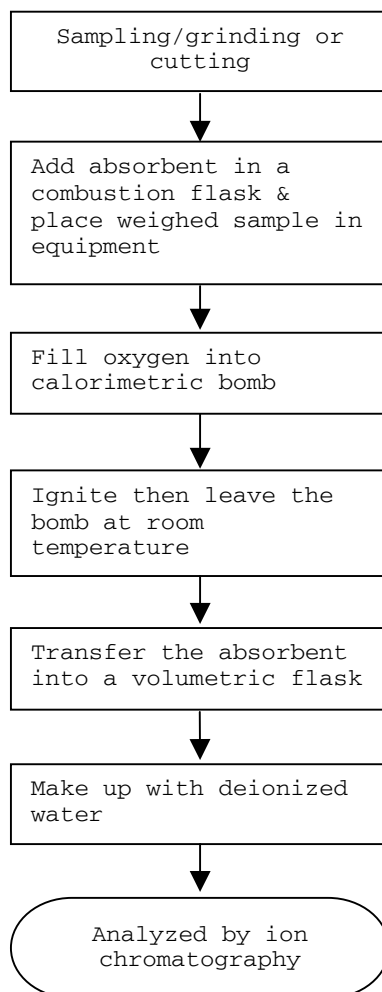
全國公證檢驗股份有限公司

11492 台北市內湖區瑞光路 423 號 8 樓

Tel: (+886-2) 6602-2888 · 2797-8885 Fax: (+886-2) 6602-2410

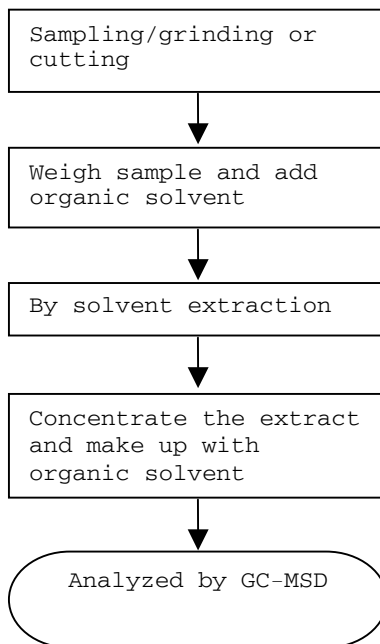
Test Conducted

Test for Halogen Content
Reference Standard: EN 14582



Test Conducted

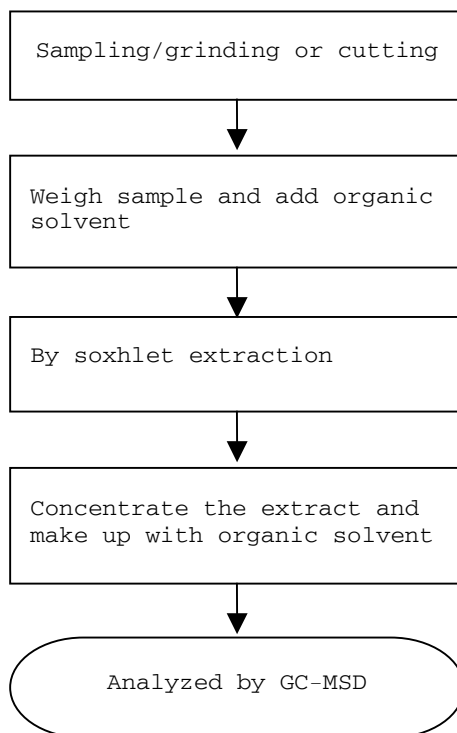
Test For Phthalates Contents
Reference Method: EN 14372: 2004



Test Conducted

Test For Hexabromocyclododecane (HBCDD)

Reference Standard : USEPA 3540C



End of Report

This report is made solely on the basis of your instructions and/or information and materials supplied by you. It is not intended to be a recommendation for any particular course of action. Intertek does not accept a duty of care or any other responsibility to any person other than the Client in respect of this report and only accepts liability to the Client insofar as is expressly contained in the terms and conditions governing Intertek's provision of services to you. Intertek makes no warranties or representations either express or implied with respect to this report save as provided for in those terms and conditions. We have aimed to conduct the Review on a diligent and careful basis and we do not accept any liability to you for any loss arising out of or in connection with this report, in contract, tort, by statute or otherwise, except in the event of our gross negligence or wilful misconduct.



Number : TWNC00306991

Test Conducted

Photo



Test Report

Applicant: Littelfuse Philippines Inc.
LIMA Technology Center, Lipa City,
Malvar, Batangas

Number : TWNC00340080
Date : Nov 07, 2013

Sample Description:

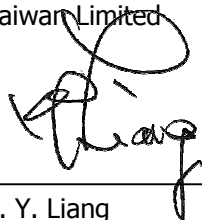
One (1) group of submitted samples said to be :

Part Description : Clip
Part Number : 883-070
Date Sample Received : Oct 30, 2013
Date Test Started : Oct 31, 2013

Test Conducted :

As requested by the applicant, for details please refer to attached pages.

Authorized by:
On Behalf of Intertek Testing Services
Taiwan Limited



K. Y. Liang
Director



Test Report

Number: TWNC00340080

Test Conducted

Test Result Summary:

Test Result Summary:				
Test Item	Unit	Test Method	Result	RL
			Silvery metal	
Heavy Metal				
Cadmium (Cd) content	ppm	With reference to IEC 62321-5: 2013, by microwave or acid digestion and determined by ICP-OES.	ND	2
Lead (Pb) content	ppm	With reference to IEC 62321-5: 2013, by microwave or acid digestion and determined by ICP-OES.	24	2
Mercury (Hg) content	ppm	With reference to IEC 62321-4: 2013, by microwave or acid digestion and determined by ICP-OES.	ND	2
Chromium VI (Cr ⁶⁺) content	mg/kg with 50 cm ²	With reference to IEC 62321: 2008, by boiling water extraction and determined by UV-Vis Spectrophotometer.	Negative(#)	0.02

Remarks: ppm = parts per million based on weight of tested sample = mg/kg
 ND = Not detected
 RL = Reporting Limit, Quantitation limit of analyte in sample
 mg/kg with 50cm² = milligram per kilogram with 50 square centimeter
 Negative = A negative test result indicated positive observation was not found at the time of test
 # = Due to the insufficient sample area, reduced total sample surface of 10 cm² was used and the dilution factor was adjusted accordingly.

Responsibility of Chemist: Kevin Liu/ Irene Chiou

Date Sample Received : Oct 30, 2013
 Test Period : Oct 31, 2013 to Nov 07, 2013

RoHS Limit

Restricted Substances	Limits
Cadmium (Cd) content	0.01% (100ppm)
Lead (Pb) content	0.1% (1000ppm)
Mercury (Hg) content	0.1% (1000ppm)
Chromium VI (Cr ⁶⁺) content	0.1% (1000ppm)

The above limits were quoted from Annex II of 2011/65/EU for homogeneous material.



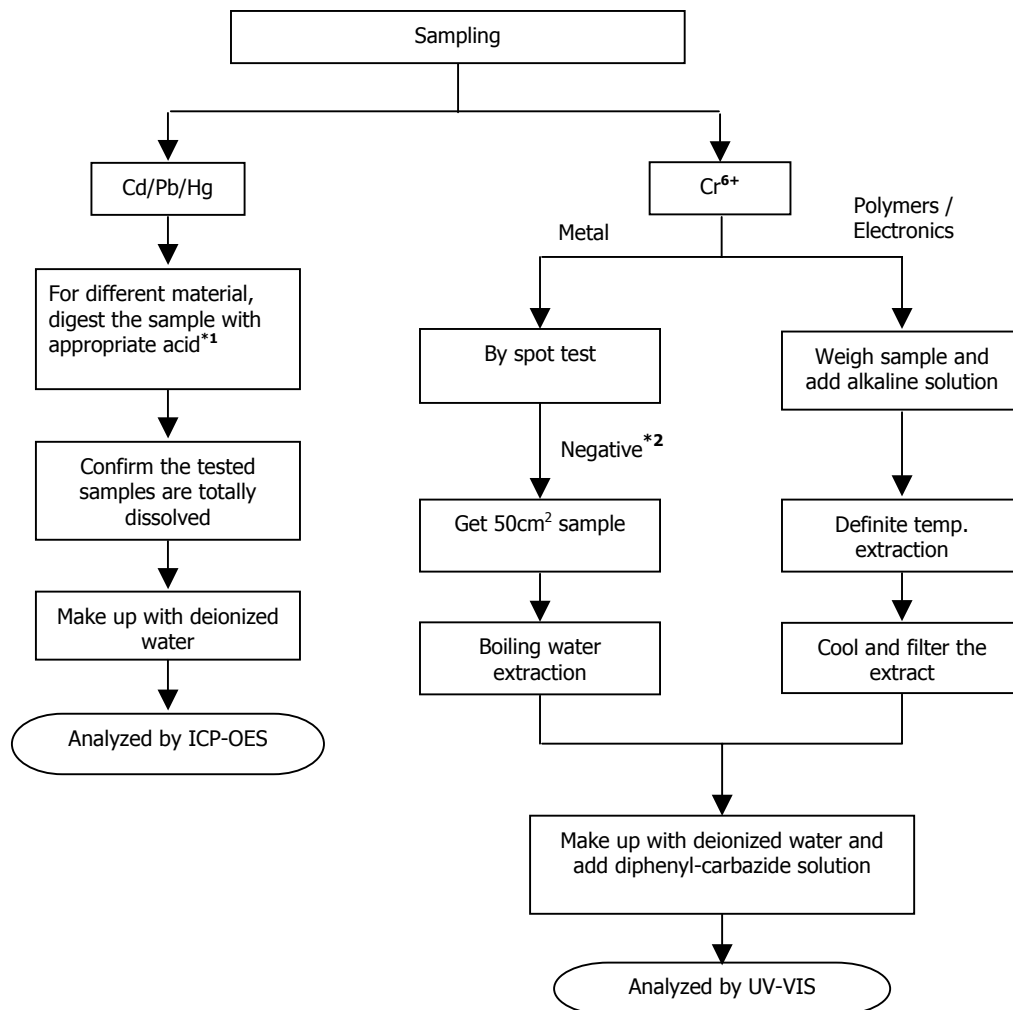
Test Report

Number: TWNC00340080

Test Conducted
Measurement Flowchart:

Test for Cd/Pb/Hg/Chromium (VI)

Reference Standard : Cd/Pb: IEC 62321-5:2013; Hg: IEC 62321-4:2013;
Chromium (VI): IEC 62321:2008



Remarks:

*1: List of Appropriate Acid :

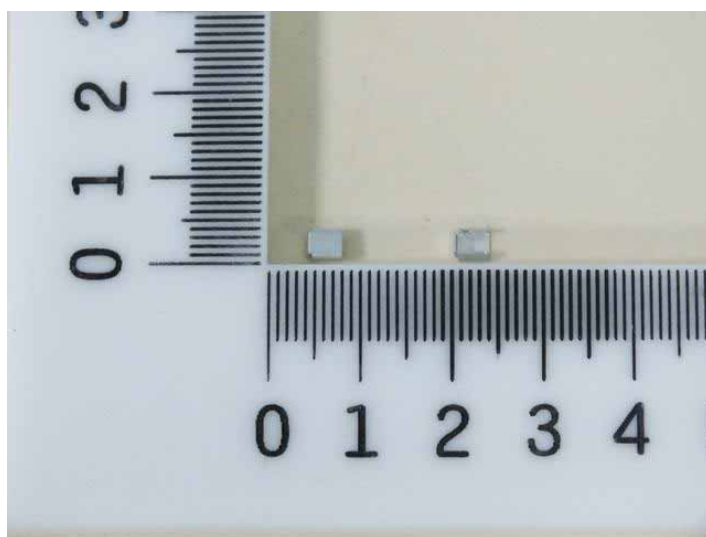
Material	Acid Added for Digestion
Polymers	HNO ₃ , HCl, HF, H ₂ O ₂ , H ₃ BO ₃
Metals	HNO ₃ , HCl, HF
Electronics	HNO ₃ , HCl, H ₂ O ₂ , HBF ₄

*2: If the result of spot test is positive, Chromium VI would be determined as detected.



Test Report

Number: TWNC00340080



End of Report

This report is made solely on the basis of your instructions and/or information and materials supplied by you. It is not intended to be a recommendation for any particular course of action. Intertek does not accept a duty of care or any other responsibility to any person other than the Client in respect of this report and only accepts liability to the Client insofar as is expressly contained in the terms and conditions governing Intertek's provision of services to you. Intertek makes no warranties or representations either express or implied with respect to this report save as provided for in those terms and conditions. We have aimed to conduct the Review on a diligent and careful basis and we do not accept any liability to you for any loss arising out of or in connection with this report, in contract, tort, by statute or otherwise, except in the event of our gross negligence or wilful misconduct.



Page 4 of 6

Intertek Testing Services Taiwan Ltd.

8F., No. 423, Ruiguang Rd., Neihu District, Taipei 11492, Taiwan, R.O.C.

全國公證檢驗股份有限公司

11492 台北市內湖區瑞光路 423 號 8 樓

Tel: (+886-2) 6602-2888 · 2797-8885 Fax: (+886-2) 6602-2410