



ICP Test Report Certification Packet

Company Name: Littelfuse, Inc.

Product Type: Metal Oxide Varistors

Product Series: TMOV/ iTMOV Series RoHS Compliant Models

Issue Date: August 20, 2012

It is hereby certified by Littelfuse, Inc. that there is neither RoHS (Directive 2011/65/EU)-restricted substance nor such use, for materials to be used for unit parts, for packing/packaging materials, and for additives and the like in the manufacturing processes.

In addition, it is hereby reported to you that the parts and sub-materials, the materials to be used for unit parts, the packing/packaging materials, and the additives and the like in the manufacturing processes, are all composed of the following components.

Issued by: *David Huang*

< DGLF Environmental, Health & Safety Engineer >

(1) Parts, sub-materials and unit parts

This document covers Metal Oxide Varistors TMOV/ iTMOV series
RoHS-Compliant models manufactured by Littelfuse, Inc.

Please see Table 1 for raw materials used.

(2) The ICP data on all measurable substances

Please see appropriate pages as identified in Table 1

Remarks :

Table 1: List of Raw Materials covered by this report

Total Parts	P/N	Raw Material Description	Page
1	N/A	Black disc, type including DD and DM	3-12
2	N/A	Silver Paste	13-24
3	N/A	Sold Paste	25-36
4	N/A	Sold Wire	37-41
5	N/A	Tinned Copper Wire	42-46
6	N/A	Hotmelt	47-54
7	N/A	Alumina Insulator	55-59
8	N/A	Epoxy Resin, Red	60-64

Test Report

Number: SZHH00699643

Applicant: LITTELFUSE, INC
8755 WEST HIGGINS ROAD SUITE
500CHICAGO IL 60631 USA

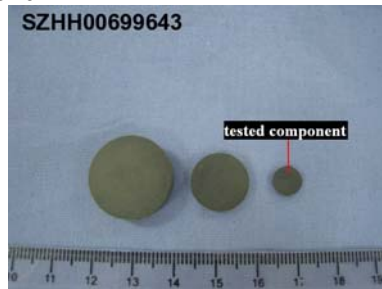
Date: Jun 19, 2012

Attn: KRISTEEN BACILA/ARSENIO CESISTA JR.

Sample Description:

One (1) submitted sample said to be **DD black disc**.

Tested component: black solid material.



Tests conducted:

As requested by the applicant, refer to attached page(s) for details.

Conclusion:

Tested Samples
Tested component of
submitted sample

Standard
Restriction of the use of certain hazardous substance in
electrical electronic and equipment (RoHS Directive
2002/95/EC and supersedure 2011/65/EU)

Result
Pass

Authorized by:
For Intertek Testing Services
Shenzhen Ltd.



Ben N.L. Lin
General Manager

**Test Report**

Number: SZHH00699643

Tests Conducted

RoHS Chemical Test

(A) Test Result Summary:

Testing Item	Result
Cadmium (Cd) Content (mg/kg)	ND(<2)
Lead (Pb) Content (mg/kg)	ND(<2)
Mercury (Hg) Content (mg/kg)	ND(<2)
Chromium (VI)(Cr ⁶⁺) Content (mg/kg)	10
Polybrominated Biphenyls (PBBs)(mg/kg)	
Monobromobiphenyl (MonoBB)	ND(<5)
Dibromobiphenyl (DiBB)	ND(<5)
Tribromobiphenyl (TriBB)	ND(<5)
Tetrabromobiphenyl (TetraBB)	ND(<5)
Pentabromobiphenyl (PentaBB)	ND(<5)
Hexabromobiphenyl (HexaBB)	ND(<5)
Heptabromobiphenyl (HeptaBB)	ND(<5)
Octabromobiphenyl (OctaBB)	ND(<5)
Nonabromobiphenyl (NonaBB)	ND(<5)
Decabromobiphenyl (DecaBB)	ND(<5)
Polybrominated Diphenyl Ethers (PBDEs)(mg/kg)	
Monobromodiphenyl Ether (MonoBDE)	ND(<5)
Dibromodiphenyl Ether (DiBDE)	ND(<5)
Tribromodiphenyl Ether (TriBDE)	ND(<5)
Tetrabromodiphenyl Ether (TetraBDE)	ND(<5)
Pentabromodiphenyl Ether (PentaBDE)	ND(<5)
Hexabromodiphenyl Ether (HexaBDE)	ND(<5)
Heptabromodiphenyl Ether (HeptaBDE)	ND(<5)
Octabromodiphenyl Ether (OctaBDE)	ND(<5)
Nonabromodiphenyl Ether (NonaBDE)	ND(<5)
Decabromodiphenyl Ether (DecaBDE)	ND(<5)

Chemist: Wang Haijun/Zeng Guoliang

mg/kg = milligram per kilogram = ppm

< = Less than

ND = Not detected

Test Report

Number: SZHH00699643

Tests Conducted

(B) RoHS Requirement:

Restricted Substances	Limits
Cadmium (Cd)	0.01% (100 mg/kg)
Lead (Pb)	0.1% (1000 mg/kg)
Mercury (Hg)	0.1% (1000 mg/kg)
Chromium (VI) (Cr ⁶⁺)	0.1% (1000 mg/kg)
Polybrominated Biphenyls (PBBs)	0.1% (1000 mg/kg)
Polybrominated Diphenyl Ethers (PBDEs)	0.1% (1000 mg/kg)

The above limits were quoted from 2002/95/EC and superseded by 2011/65/EU for homogeneous material.

(C) Test Method:

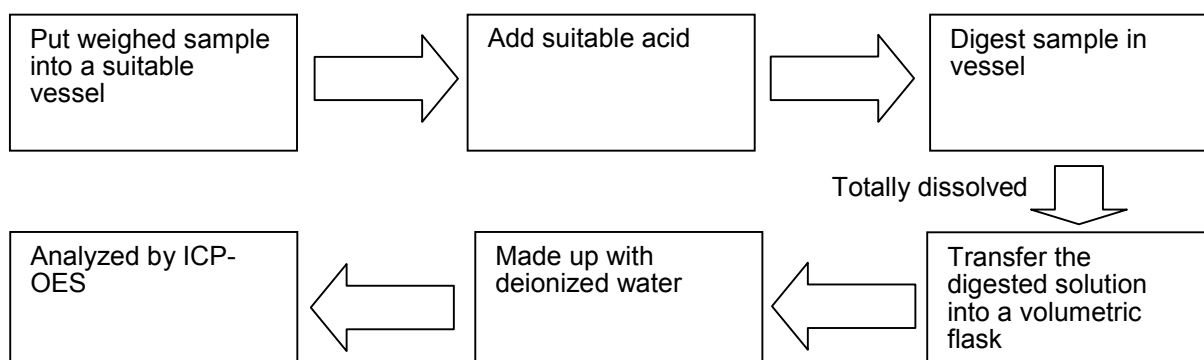
Testing Item	Testing Method	Reporting Limit
Cadmium (Cd) Content	With reference to IEC 62321 Edition 1.0:2008, by acid digestion and determined by ICP - OES	2 mg/kg
Lead (Pb) Content	With reference to IEC 62321 Edition 1.0:2008, by acid digestion and determined by ICP - OES	2 mg/kg
Mercury (Hg) Content	With reference to IEC 62321 Edition 1.0:2008, by acid digestion and determined by ICP - OES	2 mg/kg
Chromium (VI)(Cr ⁶⁺) Content	With reference to IEC 62321 Edition 1.0:2008, by alkaline digestion and determined by UV-VIS Spectrophotometer	1 mg/kg
Polybrominated Biphenyls (PBBs)& Polybrominated Diphenyl Ethers (PBDEs)	With reference to IEC 62321 Edition 1.0:2008, by solvent extraction and determined by GC/MS and further HPLC confirmation when necessary	5 mg/kg

Date sample received: Jun 09, 2012

Testing period: Jun 09, 2012 to Jun 16, 2012

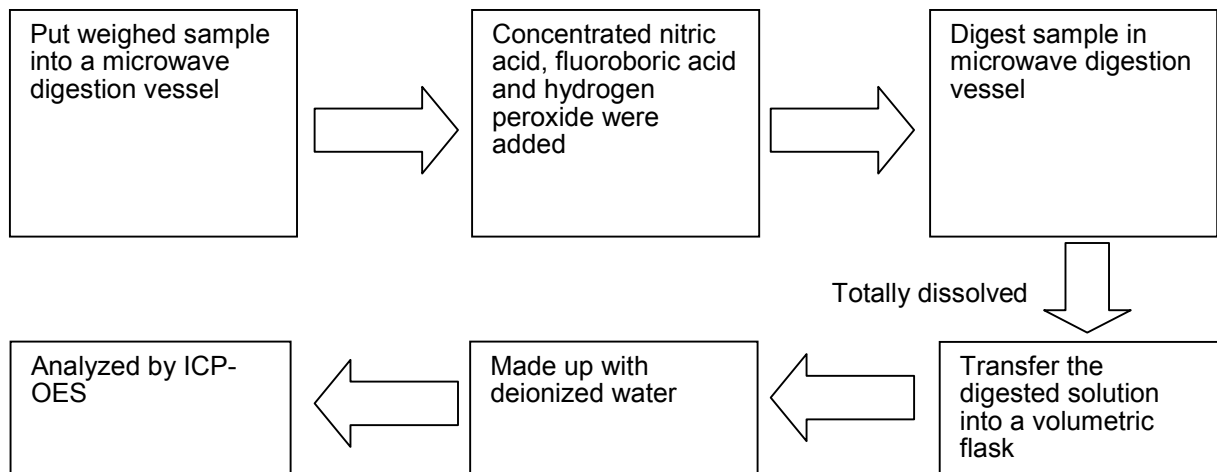
(D) Measurement Flowchart:

1. Test for Cd/Pb Contents

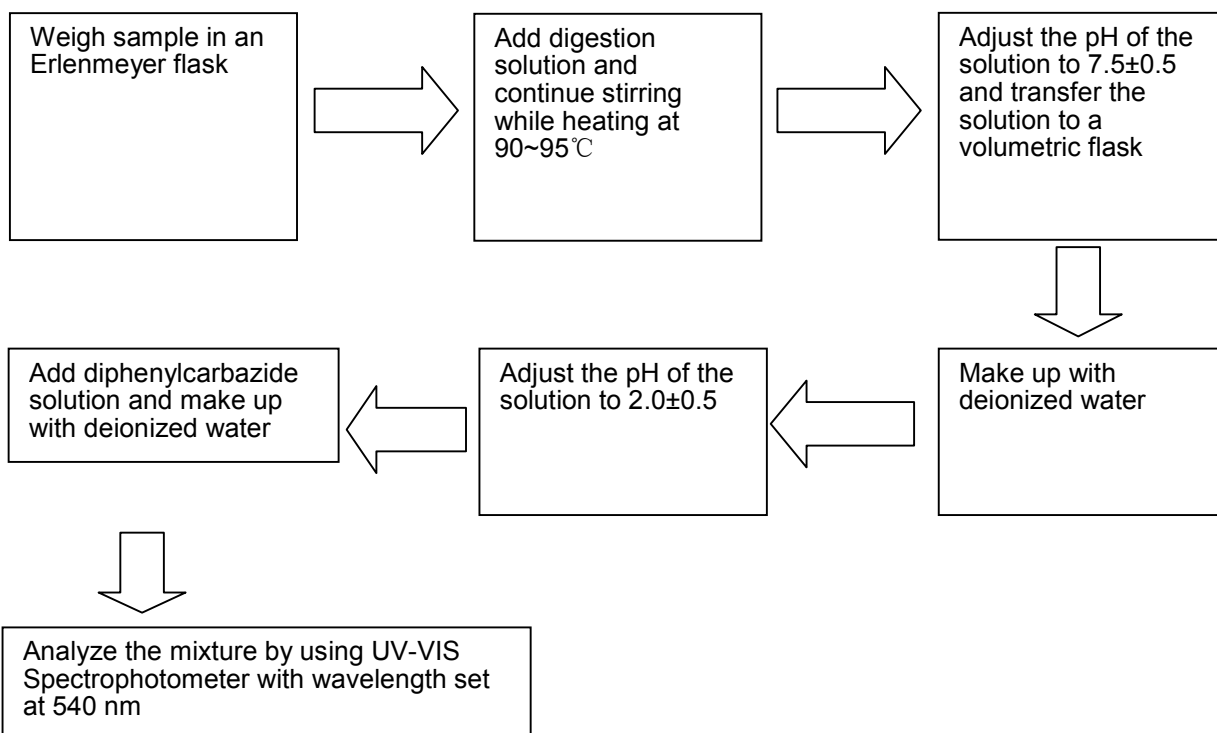


Tests Conducted

2. Test for Hg Content



3. Test for Chromium (VI) (Cr^{6+}) Content (Alkaline Digestion)

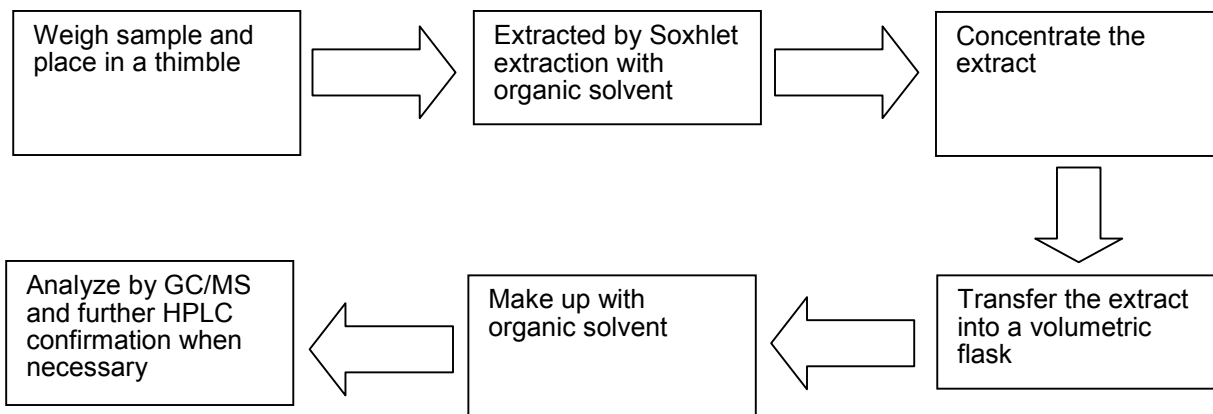


Test Report

Number: SZHH00699643

Tests Conducted

4. Test for PBBs/PBDEs Contents



End of report

Test Report

Number: SZHH00699647

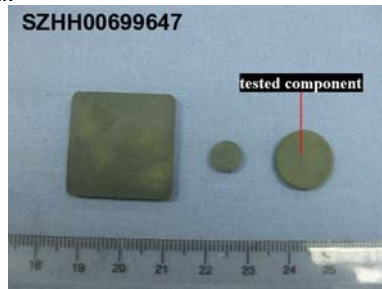
Applicant: LITTELFUSE, INC
8755 WEST HIGGINS ROAD SUITE
500CHICAGO IL 60631 USA

Date: Jun 19, 2012

Attn: KRISTEEN BACILA/ARSENIO CESISTA JR.

Sample Description:

One (1) submitted sample said to be **DM black disc**.
Tested component: black solid material.



Tests conducted:

As requested by the applicant, refer to attached page(s) for details.

Conclusion:

Tested Samples
Tested component of
submitted sample

Standard
Restriction of the use of certain hazardous substance in
electrical electronic and equipment (RoHS Direction
2002/95/EC and supersedure 2011/65/EU)

Result
Pass

Authorized by:
For Intertek Testing Services
Shenzhen Ltd.



Ben N.L. Lin
General Manager

**Test Report**

Number: SZHH00699647

Tests Conducted

RoHS Chemical Test

(A) Test Result Summary:

Testing Item	Result
Cadmium (Cd) Content (mg/kg)	ND(<2)
Lead (Pb) Content (mg/kg)	ND(<2)
Mercury (Hg) Content (mg/kg)	ND(<2)
Chromium (VI)(Cr ⁶⁺) Content (mg/kg)	10
Polybrominated Biphenyls (PBBs)(mg/kg)	
Monobromobiphenyl (MonoBB)	ND(<5)
Dibromobiphenyl (DiBB)	ND(<5)
Tribromobiphenyl (TriBB)	ND(<5)
Tetrabromobiphenyl (TetraBB)	ND(<5)
Pentabromobiphenyl (PentaBB)	ND(<5)
Hexabromobiphenyl (HexaBB)	ND(<5)
Heptabromobiphenyl (HeptaBB)	ND(<5)
Octabromobiphenyl (OctaBB)	ND(<5)
Nonabromobiphenyl (NonaBB)	ND(<5)
Decabromobiphenyl (DecaBB)	ND(<5)
Polybrominated Diphenyl Ethers (PBDEs)(mg/kg)	
Monobromodiphenyl Ether (MonoBDE)	ND(<5)
Dibromodiphenyl Ether (DiBDE)	ND(<5)
Tribromodiphenyl Ether (TriBDE)	ND(<5)
Tetrabromodiphenyl Ether (TetraBDE)	ND(<5)
Pentabromodiphenyl Ether (PentaBDE)	ND(<5)
Hexabromodiphenyl Ether (HexaBDE)	ND(<5)
Heptabromodiphenyl Ether (HeptaBDE)	ND(<5)
Octabromodiphenyl Ether (OctaBDE)	ND(<5)
Nonabromodiphenyl Ether (NonaBDE)	ND(<5)
Decabromodiphenyl Ether (DecaBDE)	ND(<5)

Chemist: Wang Haijun/Zeng Guoliang

mg/kg = milligram per kilogram = ppm

< = Less than

ND = Not detected

Test Report

Number: SZHH00699647

Tests Conducted

(B) RoHS Requirement:

Restricted Substances	Limits
Cadmium (Cd)	0.01% (100 mg/kg)
Lead (Pb)	0.1% (1000 mg/kg)
Mercury (Hg)	0.1% (1000 mg/kg)
Chromium (VI) (Cr ⁶⁺)	0.1% (1000 mg/kg)
Polybrominated Biphenyls (PBBs)	0.1% (1000 mg/kg)
Polybrominated Diphenyl Ethers (PBDEs)	0.1% (1000 mg/kg)

The above limits were quoted from 2002/95/EC and superseded by 2011/65/EU for homogeneous material.

(C) Test Method:

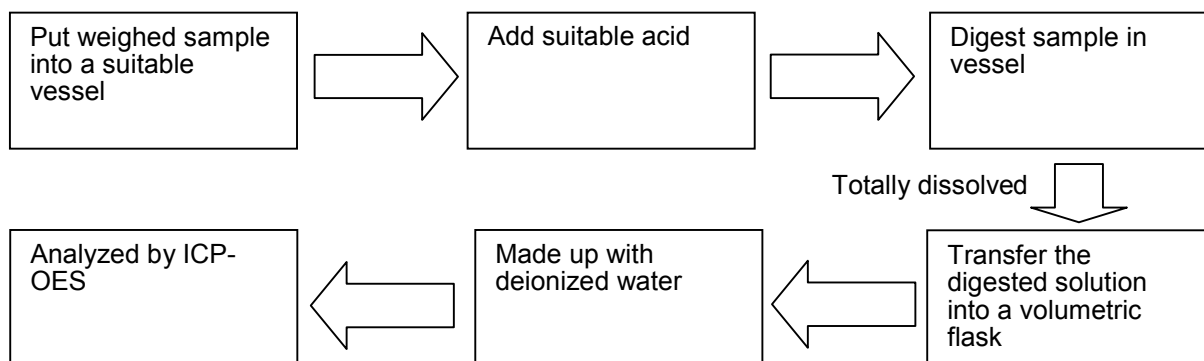
Testing Item	Testing Method	Reporting Limit
Cadmium (Cd) Content	With reference to IEC 62321 Edition 1.0:2008, by acid digestion and determined by ICP - OES	2 mg/kg
Lead (Pb) Content	With reference to IEC 62321 Edition 1.0:2008, by acid digestion and determined by ICP - OES	2 mg/kg
Mercury (Hg) Content	With reference to IEC 62321 Edition 1.0:2008, by acid digestion and determined by ICP - OES	2 mg/kg
Chromium (VI)(Cr ⁶⁺) Content	With reference to IEC 62321 Edition 1.0:2008, by alkaline digestion and determined by UV-VIS Spectrophotometer	1 mg/kg
Polybrominated Biphenyls (PBBs) & Polybrominated Diphenyl Ethers (PBDEs)	With reference to IEC 62321 Edition 1.0:2008, by solvent extraction and determined by GC/MS and further HPLC confirmation when necessary	5 mg/kg

Date sample received: Jun 09, 2012

Testing period: Jun 09, 2012 to Jun 16, 2012

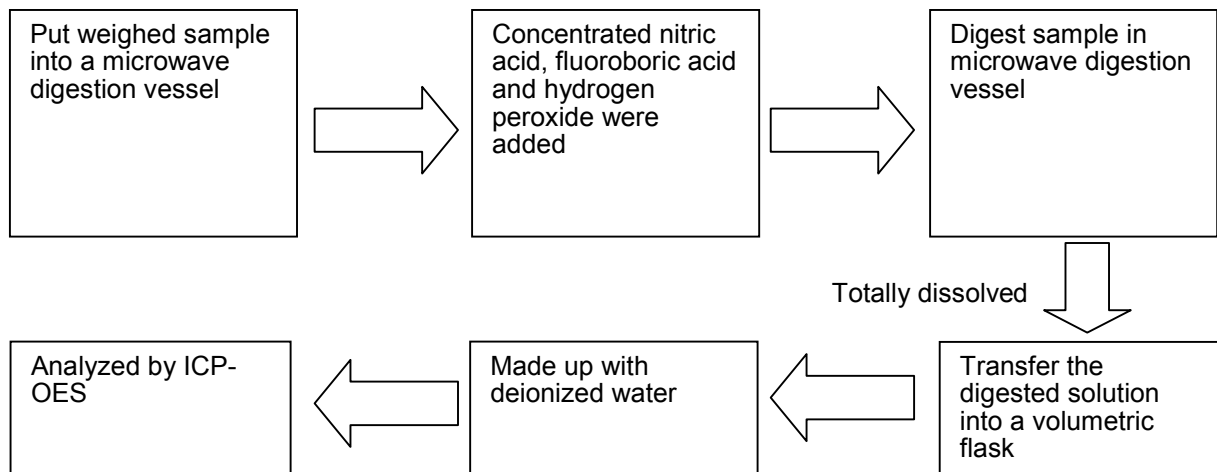
(D) Measurement Flowchart:

1. Test for Cd/Pb Contents

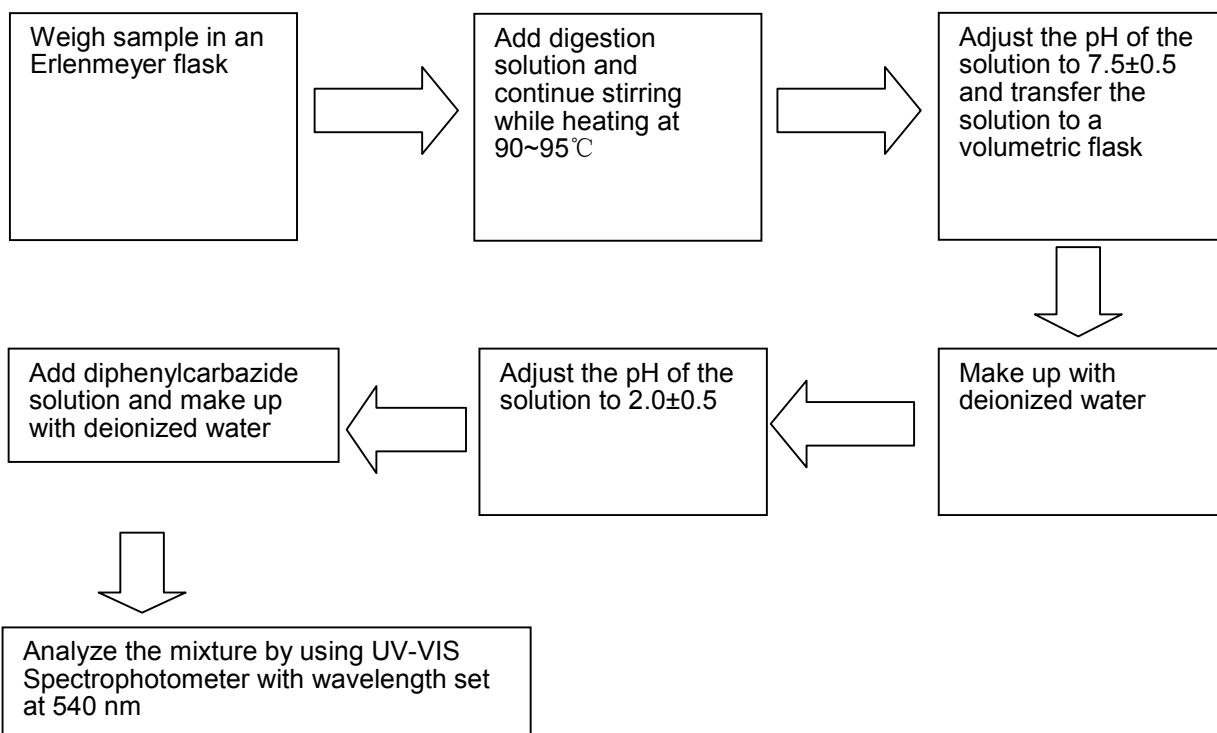


Tests Conducted

2. Test for Hg Content



3. Test for Chromium (VI) (Cr^{6+}) Content (Alkaline Digestion)

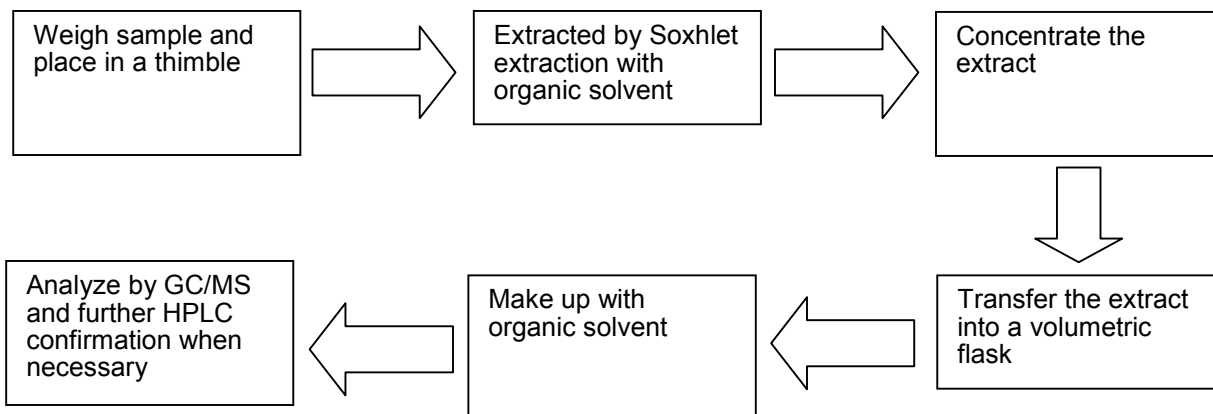


Test Report

Number: SZHH00699647

Tests Conducted

4. Test for PBBs/PBDEs Contents



End of report

Test Report

No. SHAEC1201680106

Date: 21 Feb 2012

Page 1 of 6

SHIN-NIHON KAKIN CO.,LTD

1-6,MIYAMOTO,ITABASHI,TOKYO.JAPAN

The following sample(s) was/were submitted and identified on behalf of the clients as : SILVER PASTE

SGS Job No. : SP12-003156 - SH

Model No. : SP-A6PL

Date of Sample Received : 17 Feb 2012

Testing Period : 17 Feb 2012 - 21 Feb 2012

Test Requested : Selected test(s) as requested by client.

Test Method : Please refer to next page(s).

Test Results : Please refer to next page(s).

Conclusion : Based on the performed tests on submitted samples, the results of Lead, Mercury, Cadmium, Hexavalent chromium, Polybrominated biphenyls (PBB), Polybrominated diphenyl ethers (PBDE) comply with the limits as set by RoHS Directive 2011/65/EU Annex II; recasting 2002/95/EC.

Signed for and on behalf of
SGS-CSTC Ltd.



Fan Jingjie, JJ
Approved Signatory

This document is issued by the Company subject to its General Conditions of Service printed overleaf, available on request or accessible at http://www.sgs.com/terms_and_conditions.htm and for electronic format documents, subject to Terms and Conditions for Electronic Documents at www.sgs.com/terms_e-document.htm. Attention is drawn to the limitation of liability, indemnification and jurisdiction issues defined therein. Any holder of this document is advised that information contained hereon reflects the Company's findings at the time of its presentation only and within the limits of Client's instructions. If any, The Company's sole responsibility is to its Client and this document does not exonerate parties to a transaction from exercising all their rights and obligations under the transaction documents. This document cannot be reproduced except in full, without prior written approval of the Company. Any unauthorized alteration, forgery or falsification of the content or appearance of this document is unlawful and offenders may be prosecuted to the fullest extent of the law. Unless otherwise stated, the results shown in this test report refer only to the sample(s) tested.

Test Report

No. SHAEC1201680106

Date: 21 Feb 2012

Page 2 of 6

Test Results :

Test Part Description :

Specimen No.	SGS Sample ID	Description
1	SHA12-016801.006	Green paste

Remarks :

- (1) 1 mg/kg = 1 ppm = 0.0001%
- (2) MDL = Method Detection Limit
- (3) ND = Not Detected (< MDL)
- (4) "-" = Not Regulated

RoHS Directive 2011/65/EU

Test Method : With reference to IEC 62321:2008

- (1) Determination of Cadmium by ICP-OES.
- (2) Determination of Lead by ICP-OES.
- (3) Determination of Mercury by ICP-OES.
- (4) Determination of Hexavalent Chromium by Colorimetric Method using UV-Vis.
- (5) Determination of PBBs / PBDEs content by GC-MS.

Test Item(s)	Limit	Unit	MDL	006
Cadmium (Cd)	100	mg/kg	2	ND
Lead (Pb)	1,000	mg/kg	2	ND
Mercury (Hg)	1,000	mg/kg	2	ND
Hexavalent Chromium (Cr(VI))	1,000	mg/kg	2	ND
Sum of PBBs	1,000	mg/kg	-	ND
Monobromobiphenyl	-	mg/kg	5	ND
Dibromobiphenyl	-	mg/kg	5	ND
Tribromobiphenyl	-	mg/kg	5	ND
Tetrabromobiphenyl	-	mg/kg	5	ND
Pentabromobiphenyl	-	mg/kg	5	ND
Hexabromobiphenyl	-	mg/kg	5	ND
Heptabromobiphenyl	-	mg/kg	5	ND
Octabromobiphenyl	-	mg/kg	5	ND
Nonabromobiphenyl	-	mg/kg	5	ND
Decabromobiphenyl	-	mg/kg	5	ND
Sum of PBDEs	1,000	mg/kg	-	ND
Monobromodiphenyl ether	-	mg/kg	5	ND

This document is issued by the Company subject to its General Conditions of Service printed overleaf, available on request or accessible at http://www.sgs.com/terms_and_conditions.htm and for electronic format documents, subject to Terms and Conditions for Electronic Documents at www.sgs.com/terms_e-document.htm. Attention is drawn to the limitation of liability, indemnification and jurisdiction issues defined therein. Any holder of this document is advised that information contained hereon reflects the Company's findings at the time of its presentation only and within the limits of Client's instructions, if any. The Company's sole responsibility is to its Client and this document does not exonerate parties to a transaction from exercising all their rights and obligations under the transaction documents. This document cannot be reproduced except in full, without prior written approval of the Company. Any unauthorized alteration, forgery or falsification of the content or appearance of this document is unlawful and offenders may be prosecuted to the fullest extent of the law. Unless otherwise stated, the results shown in this test report refer only to the sample(s) tested.



SGS (Shanghai) Technical Service Co., Ltd.
Testing Service Division

3rd Building, No. 889 Yishan Road Xuhui District, Shanghai China 200233
中国·上海·徐汇区宜山路889号3号楼 邮编: 200233

1 E&E (86-21) 61402553 f E&E (86-21) 64953679
HL: (86-21) 61402594 HL: (86-21) 54500353

www.cn.sgs.com
e sgs.china@sgs.com

Member of the SGS Group (SGS SA)



Test Report

No. SHAEC1201680106

Date: 21 Feb 2012

Page 3 of 6

Test Item(s)	Limit	Unit	MDL	006
Dibromodiphenyl ether	-	mg/kg	5	ND
Tribromodiphenyl ether	-	mg/kg	5	ND
Tetrabromodiphenyl ether	-	mg/kg	5	ND
Pentabromodiphenyl ether	-	mg/kg	5	ND
Hexabromodiphenyl ether	-	mg/kg	5	ND
Heptabromodiphenyl ether	-	mg/kg	5	ND
Octabromodiphenyl ether	-	mg/kg	5	ND
Nonabromodiphenyl ether	-	mg/kg	5	ND
Decabromodiphenyl ether	-	mg/kg	5	ND

Notes :

- (1) The maximum permissible limit is quoted from directive 2011/65/EU, Annex II
- (2) Result shown is of the total weight of wet sample.

Halogen

Test Method : With reference to EN 14582: 2007, analysis was performed by Ion Chromatograph (IC).

Test Item(s)	Unit	MDL	006
Fluorine (F)	mg/kg	50	ND
Chlorine (Cl)	mg/kg	50	ND
Bromine (Br)	mg/kg	50	ND
Iodine (I)	mg/kg	50	ND

Notes :

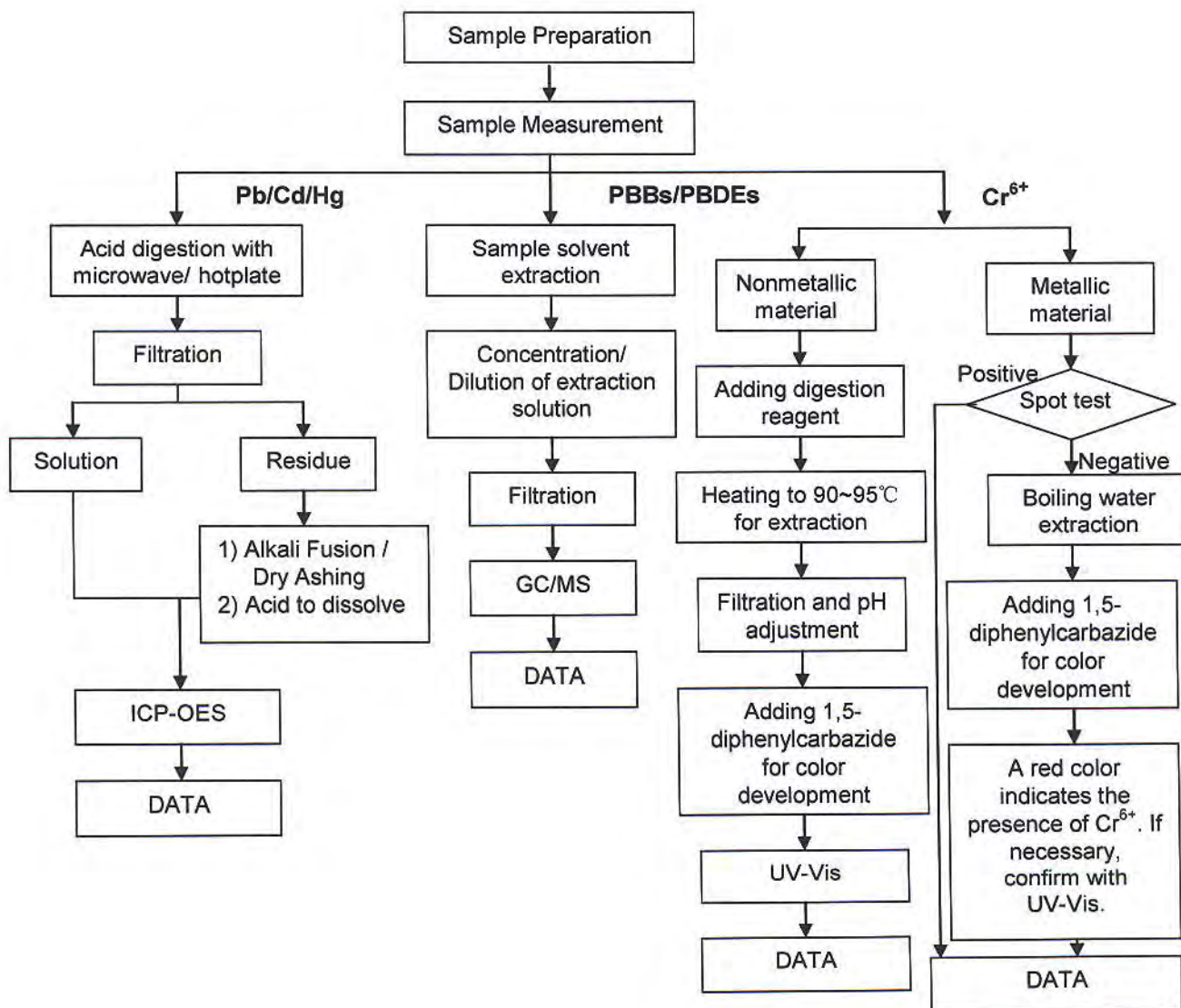
- (1) Result shown is of the total weight of wet sample.

This document is issued by the Company subject to its General Conditions of Service printed overleaf, available on request or accessible at http://www.sgs.com/terms_and_conditions.htm and, for electronic format documents, subject to Terms and Conditions for Electronic Documents at www.sgs.com/terms_e-document.htm. Attention is drawn to the limitation of liability, jurisdiction and jurisdiction issues defined therein. Any holder of this document is advised that information contained hereon reflects the Company's findings at the time of its preparation only and within the limits of Client's instructions, if any. The Company's sole responsibility is to its Client and this document does not exonerate parties to a transaction from exercising all their rights and obligations under the transaction documents. This document cannot be reproduced except in full, without prior written approval of the Company. Any unauthorized alteration, forgery or falsification of the content or appearance of this document is unlawful and offenders may be prosecuted to the fullest extent of the law. Unless otherwise stated, the results shown in this test report refer only to the sample(s) tested.

ATTACHMENTS

RoHS Testing Flow Chart

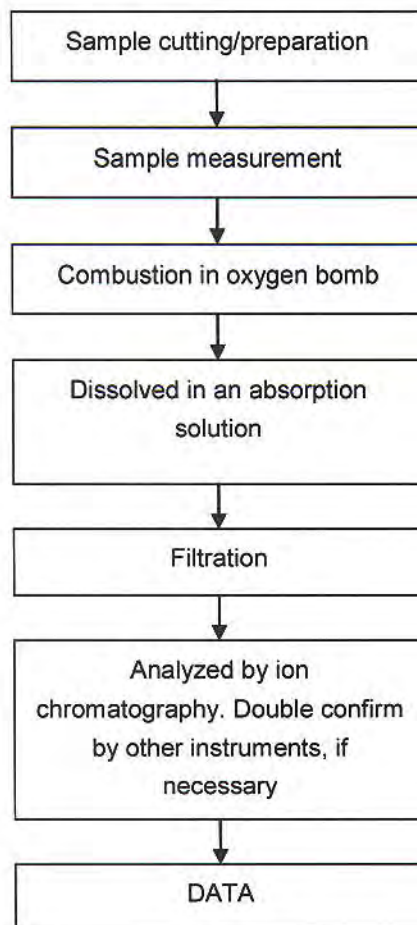
- 1) Name of the person who made testing: Jan Shi/Yoyo Wang/Allen Xiao/Gary Xu
- 2) Name of the person in charge of testing: Jeff Zhang/George Xu/ Elim Lin
- 3) These samples were dissolved totally by pre-conditioning method according to below flow chart.
(Cr6+ and PBBs/PBDEs test method excluded)



This document is issued by the Company subject to its General Conditions of Service printed overleaf, available on request or accessible at http://www.sgs.com/terms_and_conditions.htm and for electronic format documents, subject to Terms and Conditions for Electronic Documents at www.sgs.com/terms_e-document.htm. Attention is drawn to the limitation of liability, interpretation and jurisdiction issues defined therein. Any holder of this document is advised that information contained hereon reflects the Company's findings at the time of its presentation only and within the limits of Client's instructions, if any. The Company's sole responsibility is to its Client and this document does not exonerate parties to a transaction from exercising all their rights and obligations under the transaction documents. This document cannot be reproduced except in full, without prior written approval of the Company. Any unauthorized alteration, forgery or falsification of the content or appearance of this document is unlawful and offenders may be prosecuted to the fullest extent of the law. Unless otherwise stated, the results shown in this test report refer only to the sample(s) tested.

Halogen Testing Flow Chart

- 1) Name of the person who made testing: Sisily Yin
- 2) Name of the person in charge of testing: Daisy Gong



This document is issued by the Company subject to its General Conditions of Service printed overleaf, available on request or accessible at http://www.sgs.com/terms_and_conditions.htm and, for electronic format documents, subject to Terms and Conditions for Electronic Documents at www.sgs.com/terms_e-document.htm. Attention is drawn to the limitation of liability, indemnification and jurisdiction issues defined therein. Any holder of this document is advised that information contained hereon reflects the Company's findings at the time of its preparation only and within the limits of Client's instructions, if any. The Company's sole responsibility is to its Client and this document does not exonerate parties to a transaction from exercising all their rights and obligations under the transaction documents. This document cannot be reproduced except in full, without prior written approval of the Company. Any unauthorized alteration, forgery or falsification of the content or appearance of this document is unlawful and offenders may be prosecuted to the fullest extent of the law. Unless otherwise stated, the results shown in this test report refer only to the sample(s) tested.

Test Report

No. SHAEC1203840702

Date: 09 Apr 2012

Page 1 of 6

SHIN-NIHON KAKIN CO.,LTD.

1-6,MIYAMOTO, ITABASHI,TOKYO,JAPAN

The following sample(s) was/were submitted and identified on behalf of the clients as : SILVER PASTE

SGS Job No. : SP12-007978 - SH
 Model No. : SP-A6PL
 Date of Sample Received : 05 Apr 2012
 Testing Period : 05 Apr 2012 - 09 Apr 2012
 Test Requested : Selected test(s) as requested by client.
 Test Method : Please refer to next page(s).
 Test Results : Please refer to next page(s).

Signed for and on behalf of
 SGS-CSTC Ltd.



Fan Jingjie, JJ
 Approved Signatory

This document is issued by the Company subject to its General Conditions of Service printed overleaf, available on request or accessible at http://www.sgs.com/terms_and_conditions.htm and for electronic format documents subject to Terms and Conditions for Electronic Documents at www.sgs.com/terms_e-document.htm. Attention is drawn to the limitation of liability, responsibility and jurisdiction issues defined therein. Any holder of this document is advised that information contained hereon reflects the Company's findings at the time of its preparation only and within the limits of Client's instructions, if any. The Company's sole responsibility is to its Client and this document does not exonerate parties to a transaction from exercising all their rights and obligations under the transaction documents. This document cannot be reproduced except in full, without prior written approval of the Company. Any unauthorized alteration, forgery or falsification of the content or appearance of this document is unlawful and offenders may be prosecuted to the fullest extent of the law. Unless otherwise stated, the results shown in this test report refer only to the sample(s) tested.



3rd Building No. 889 Yishan Road Kakin District, Shanghai China 200233
 中国·上海·徐汇区宜山路889号3号楼 邮编: 200233

Tel: (86-21) 61402563 Fax: (86-21) 64953579 www.cn.sgs.com
 HL: (86-21) 61402594 E-mail: sgs.china@sgs.com

Member of the SGS Group (SGS SA)

Test Report

No. SHAEC1203840702

Date: 09 Apr 2012

Page 2 of 6

Test Results :

Test Part Description :

Specimen No.	SGS Sample ID	Description
1	SHA12-038407.002	Ink green mud

Remarks :

- (1) 1 mg/kg = 1 ppm = 0.0001%
- (2) MDL = Method Detection Limit
- (3) ND = Not Detected (< MDL)
- (4) "-" = Not Regulated

Phthalates

Test Method : With reference to EN14372: 2004, analysis was performed by GC-MS.

Test Item(s)	Unit	MDL	002
Bis-(2-ethylhexyl) Phthalate (DEHP)	%	0.003	ND
Benzylbutyl Phthalate (BBP)	%	0.003	ND
Dibutyl Phthalate (DBP)	%	0.003	ND

Notes :

- (1) DBP,BBP,DEHP Reference information: Entry 51 of Regulation (EC) No 552/2009 amending Annex XVII of REACH Regulation (EC) No 1907/2006 (previously restricted under Directive 2005/84/EC);
 - i) Shall not be used as substances or in mixtures, in concentrations greater than 0,1 % by weight of the plasticised material, in toys and childcare articles.
 - ii) Toys and childcare articles containing these phthalates in a concentration greater than 0.1 % by weight of the plasticised material shall not be placed on the market.
 Please refer to Regulation (EC) No 552/2009 to get more detail information

Hexabromocyclododecane (HBCDD)

Test Method : With reference to US EPA 3550C: 2007, analysis was performed by GC-MS.

Test Item(s)	Unit	MDL	002
Hexabromocyclododecane (HBCDD)	mg/kg	10	ND

This document is issued by the Company subject to its General Conditions of Service printed overleaf, available on request or accessible at http://www.sgs.com/terms_and_conditions.htm and for electronic format documents subject to Terms and Conditions for Electronic Documents at www.sgs.com/terms_e-document.htm. Attention is drawn to the limitation of liability, jurisdiction and jurisdiction issues defined therein. Any holder of this document is advised that information contained herein reflects the Company's findings at the time of its investigation and within the limits of Client's instructions, if any. The Company's sole responsibility is to its Client and this document does not exonerate parties to a transaction from exercising all their rights and obligations under the transaction documents. This document cannot be reproduced except in full, without prior written approval of the Company. Any unauthorized alteration, forgery or falsification of the content or appearance of this document is unlawful and offenders may be prosecuted to the fullest extent of the law. Unless otherwise stated the results shown in this test report refer only to the sample(s) tested.



Building No. 889 Yishan Road Xuhui District, Shanghai China 200233
中国·上海·徐汇区宜山路889号3号楼 邮编: 200233

TEL: (86-21) 61402553 FAX: (86-21) 64953679 www.cn.sgs.com
HL: (86-21) 51402594 HL: (86-21) 54500351 e: sgs.china@sgs.com

Member of the SGS Group (SGS SA)

Test Report

No. SHAEC1203840702

Date: 09 Apr 2012

Page 3 of 6

Remark: Result shown is of the total weight of wet sample.

3 of 6

This document is issued by the Company subject to its General Conditions of Service printed overleaf, available on request or accessible at http://www.sgs.com/terms_and_conditions.htm and for electronic format documents subject to Terms and Conditions for Electronic Documents at www.sgs.com/terms_e-document.htm. Attention is drawn to the limitation of liability, indemnification and jurisdiction issued defined therein. Any holder of this document is advised that information contained hereon reflects the Company's findings at the time of its inspection only and within the limits of Client's instructions, if any. The Company's sole responsibility is to its Client and this document does not exonerate parties to a transaction from exercising all their rights and obligations under the transaction documents. This document cannot be reproduced except in full without prior written approval of the Company. Any unauthorized alteration, forgery or falsification of the content or appearance of this document is unlawful and offenders may be prosecuted to the fullest extent of the law. Unless otherwise stated the results shown in this test report refer only to the sample(s) tested.



3rd Building, No. 889 Yishan Road, Xuhui District, Shanghai, China 200233
中国·上海·徐汇区宜山路889号3号楼 邮编: 200233

T E&E (86-21) 61402553 T E&E (86-21) 64953679
HL: (86-21) 61402594 HL: (86-21) 64500353

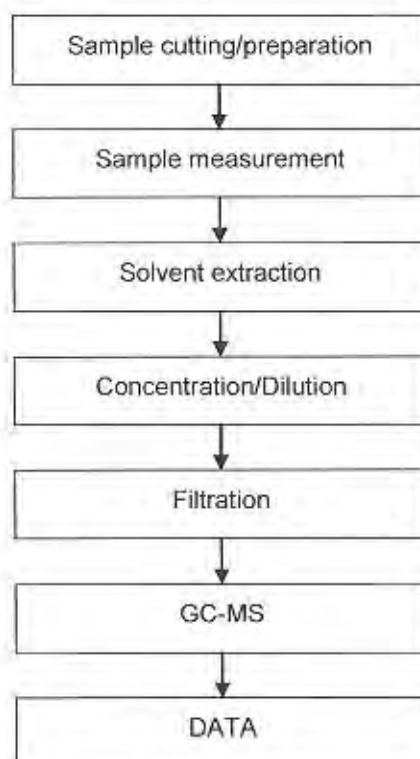
www.cn.sgs.com
e: sgs.china@sgs.com

Member of the SGS Group (SGS SA)

ATTACHMENTS

Phthalates Testing Flow Chart

- 1) Name of the person who made testing: Elyn Yao
- 2) Name of the person in charge of testing: Rachel Zhang

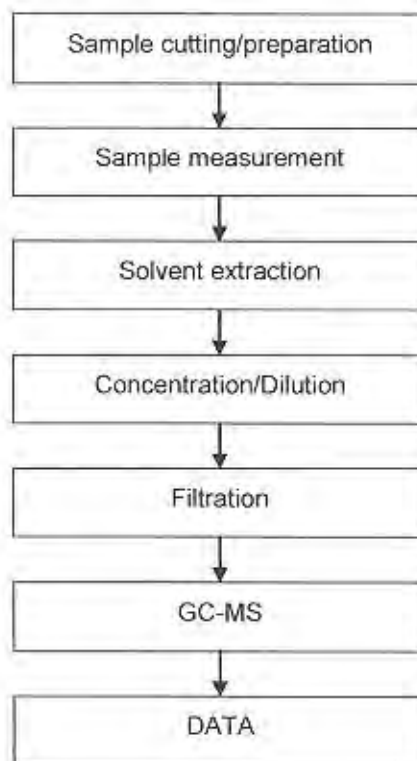


This document is issued by the Company subject to its General Conditions of Service printed overleaf, available on request or accessible at http://www.sgs.com/terms_and_conditions.htm and for electronic format documents, subject to Terms and Conditions for Electronic Documents at www.sgs.com/terms_e-document.htm. Attention is drawn to the limitation of liability, indemnification and jurisdiction issues defined therein. Any holder of this document is advised that information contained hereon reflects the Company's findings at the time of its provision only and within the limits of Client's instructions, if any. The Company's sole responsibility is to its Client and this document does not exonerate parties to a transaction from exercising all their rights and obligations under the transaction documents. This document cannot be reproduced except in full, without prior written approval of the Company. Any unauthorized alteration, forgery or falsification of the content or appearance of this document is unlawful and offenders may be prosecuted to the fullest extent of the law. Unless otherwise stated, the results shown in this test report refer only to the sample(s) tested.



HBCDD Testing Flow Chart

- 1) Name of the person who made testing: Gary Xu
- 2) Name of the person in charge of testing: Elim Lin



This document is issued by the Company subject to its General Conditions of Service printed overleaf, available on request or accessible at http://www.sgs.com/terms_and_conditions.htm and for electronic format documents subject to Terms and Conditions for Electronic Documents at www.sgs.com/terms_e-document.htm. Attention is drawn to the limitation of liability, indemnification and jurisdiction issues defined therein. Any holder of this document is advised that information contained hereon reflects the Company's findings at the time of its intervention only and within the limits of Client's instructions, if any. The Company's sole responsibility is to its Client and this document does not exonerate parties to a transaction from exercising all their rights and obligations under the transaction documents. This document cannot be reproduced except in full, without prior written approval of the Company, and unauthorized alteration, forgery or falsification of the content or appearance of this document is unlawful and offenders may be prosecuted to the fullest extent of the law. Unless otherwise stated the results shown in this test report refer only to the sample(s) tested.



Test Report

No. SHAEC1203840702

Date: 09 Apr 2012

Page 6 of 6

Sample photo:



SGS authenticate the photo on original report only

*** End of Report ***

This document is issued by the Company subject to its General Conditions of Service printed overleaf, available on request or accessible at http://www.sgs.com/terms_and_conditions.htm, and for electronic format documents subject to Terms and Conditions for Electronic Documents at www.sgs.com/terms_e-document.htm. Attention is drawn to the limitation of liability, indemnification and jurisdiction issues defined therein. Any holder of this document is advised that information contained hereon reflects the Company's findings, at the time of its intervention only, and within the limits of Client's instructions, if any. The Company's sole responsibility is to its Client and this document does not exonerate parties to a transaction from exercising all their rights and obligations under the transaction documents. This document cannot be reproduced except in full, without prior written approval of the Company. Any unauthorized alteration, forgery or falsification of the content or appearance of this document is unlawful and offenders may be prosecuted to the fullest extent of the law. Unless otherwise stated, the results shown in this test report refer only to the sample(s) tested.



3rd Building No.289 Yishan Road Xuhui District, Shanghai China 200233
中国·上海·徐汇区宜山路289号3号楼 邮编: 200233

1E&E (86-21) 61402553 1E&E (86-21) 64953679
HL: (86-21) 61402594 HL: (86-21) 54500353

www.ch.sgs.com
e sgs.china@sgs.com

Member of the SGS Group (SGS SA)

Test Report

Report No. RLSZE001191100004

Page 1 of 4

Applicant DONGGUAN QIHANG XIYE MANUFACTURING CO.,LTD

Address NO.1 INDUSTRIAL AREA XIAGANG ,CHANG'AN TOWN ,DONGGUAN CITY

Report on the submitted sample(s) said to be

Sample Name LEAD-FREE SOLDER PASTE

Sample Description Gray paste

Part No. MIXTURE OF QH#LF96, QH#LF97, QH#LF98, QH#LF658, QH#LF601, QH#LT658, QH#LT601, QH#LT658C, QH#LF96H, QH#LF97H, QH#LF98H, QH#LF658H, QH#LF601H, QH#LT658H, QH#LT601H, QH#LT658CH

Color Silver

Sample Received Date Mar. 3, 2012

Testing Period Mar. 3, 2012 to Mar. 8, 2012

Test Requested As specified by client, to test Lead(Pb), Cadmium(Cd), Mercury(Hg), Hexavalent Chromium(Cr(VI)), Polybrominated Biphenyls(PBBs), Polybrominated Diphenyl Ethers(PBDEs) in the submitted sample(s).

Test Method

Test Item(s)	Test Method	Measured Equipment(s)	MDL
Lead(Pb)	IEC 62321:2008 Ed.1 Sec.10	ICP-OES	2 mg/kg
Cadmium(Cd)	IEC 62321:2008 Ed.1 Sec.10	ICP-OES	2 mg/kg
Mercury(Hg)	IEC 62321:2008 Ed.1 Sec.7	ICP-OES	2 mg/kg
Hexavalent Chromium(Cr(VI))	IEC 62321:2008 Ed.1 Annex C	UV-Vis	2 mg/kg
Polybrominated Biphenyls(PBBs)	IEC 62321:2008 Ed.1 Annex A	GC-MS	5 mg/kg
Polybrominated Diphenyl Ethers(PBDEs)	IEC 62321:2008 Ed.1 Annex A	GC-MS	5 mg/kg

Test Result(s) Please refer to the following page(s).

Conclusion:

Tested Sample	According to directive	Result
Submitted Sample	2011/65/EU*	Pass

*=July 1, 2011, the EU Official Journal (OJ) released the directive 2011/65/EU which as a new version of RoHS Directive (2002/95/EC). The revised directive has entered into force on the twentieth day after its publication in the OJ.

Tested by Rick Inspected by Vargas

Approved by [Signature] Date Mar. 8, 2012

Technical Manager



No. 11363955

Test Report

Report No. RLSZE001191100004

Page 2 of 4

Test Result(s)

Tested Item(s)	Content
Lead(Pb)	55 mg/kg
Cadmium (Cd)	N.D.
Mercury(Hg)	N.D.
Hexavalent Chromium(Cr(VI))	N.D.

Tested Item(s)	Content
Polybrominated Biphenyls (PBBs)	
Monobromobiphenyl	N.D.
Dibromobiphenyl	N.D.
Tribromobiphenyl	N.D.
Tetrabromobiphenyl	N.D.
Pentabromobiphenyl	N.D.
Hexabromobiphenyl	N.D.
Heptabromobiphenyl	N.D.
Octabromobiphenyl	N.D.
Nonabromobiphenyl	N.D.
Decabromobiphenyl	N.D.

Tested Item(s)	Content
Polybrominated Diphenyl Ethers (PBDEs)	
Monobromodiphenyl ether	N.D.
Dibromodiphenyl ether	N.D.
Tribromodiphenyl ether	N.D.
Tetrabromodiphenyl ether	N.D.
Pentabromodiphenyl ether	N.D.
Hexabromodiphenyl ether	N.D.
Heptabromodiphenyl ether	N.D.
Octabromodiphenyl ether	N.D.
Nonabromodiphenyl ether	N.D.
Decabromodiphenyl ether	N.D.

Note: The sample had been dissolved totally tested for Lead, Cadmium, Mercury.

-MDL = Method Detection Limit

-N.D. = Not Detected (<MDL)

-mg/kg = ppm = parts per million

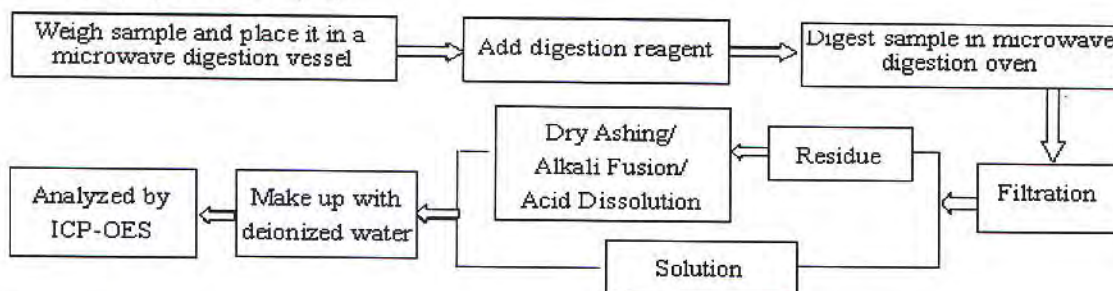
Test Report

Report No. RLSZE001191100004

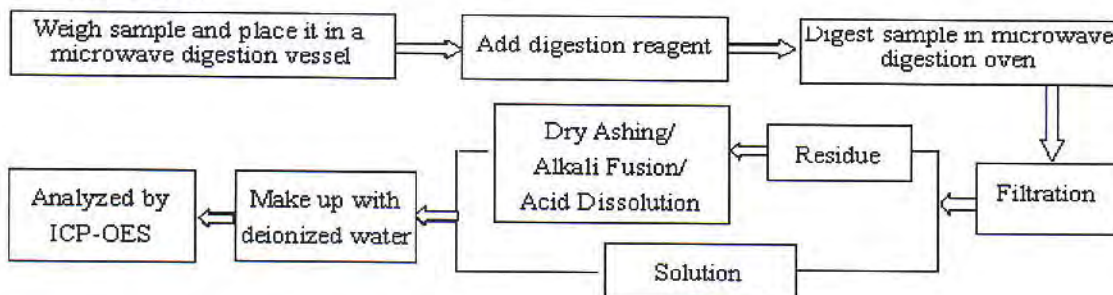
Page 3 of 4

Test Process

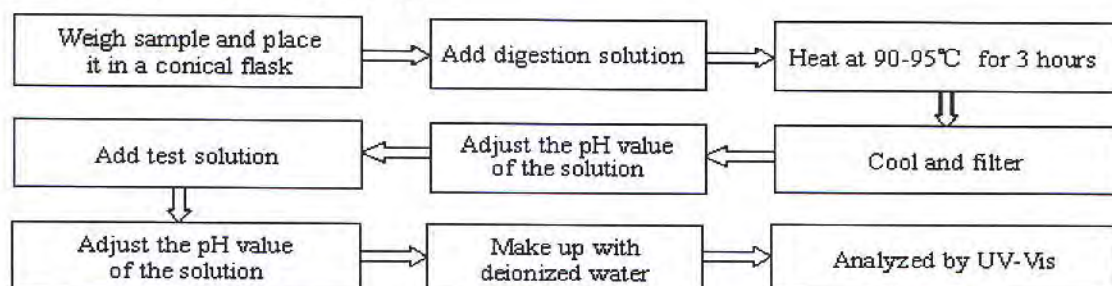
1. Lead(Pb), Cadmium(Cd)



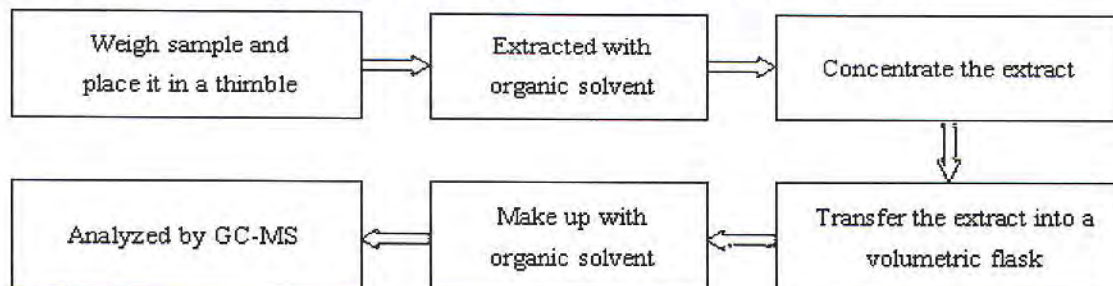
2. Mercury(Hg)



3. Hexavalent Chromium(Cr(VI))



4. Polybrominated Biphenyls(PBBs), Polybrominated Diphenyl Ethers(PBDEs)



Test Report

Report No. RLSZE001191100004

Page 4 of 4

Photo(s) of the sample(s)



*** End of report ***

This report is considered invalidated without the Special Seal for Inspection of the CTI. This report shall not be altered, increased or deleted. The results shown in this test report refer only to the sample(s) tested. Without written approval of CTI, this test report shall not be copied except in full and published as advertisement.

Building C, Hongwei Industrial Zone, Baoan 70 District, Shenzhen

Test Report

Report No. RLSZE001296390001

Page 1 of 3

Applicant DONGGUAN QIHANG XIYE MANUFACTURING CO.,LTD

Address NO.1 INDUSTRIAL AREA XIAGANG ,CHANG'AN TOWN ,DONGGUAN CITY

The following sample(s) and sample information was/were submitted and identified by/on the behalf of the client

Sample Name LEAD-FREE SOLDER PASTE

COLOR silver

Material TIN

Sample Received Date May. 25, 2012

Testing Period May. 25, 2012 to May. 29, 2012

Test Requested As specified by client, to test Fluorine(F), Chlorine(Cl), Bromine(Br), Iodine(I) in the submitted sample(s).

Test Method

Test Item(s)	Test Method	Measured Equipment(s)	MDL
Fluorine(F)	Refer to BS EN 14582:2007	IC	10 mg/kg
Chlorine(Cl)	Refer to BS EN 14582:2007	IC	10 mg/kg
Bromine(Br)	Refer to BS EN 14582:2007	IC	10 mg/kg
Iodine(I)	Refer to BS EN 14582:2007	IC	10 mg/kg

Test Result(s) Please refer to the following page(s).

Tested by

Rick Li

Reviewed by

Vargan He

Approved by

Danny Liu

Date

May. 29, 2012

Danny Liu

Technical Manager

No. 38791053

Test Report

Report No. RLSZE001296390001

Page 2 of 3

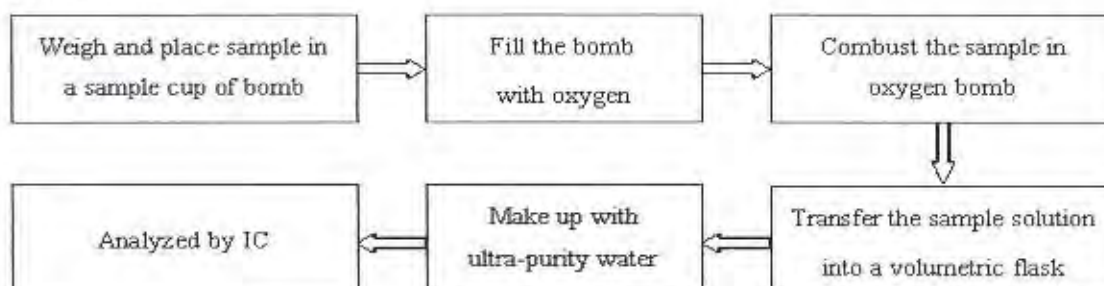
Test Result(s)

Tested Item(s)	Content
Halogen(s)	
Fluorine (F)	N.D.
Chlorine (Cl)	N.D.
Bromine (Br)	N.D.
Iodine (I)	N.D.

Tested Sample/Part Description Gray paste

Note:
 -MDL = Method Detection Limit
 -N.D. = Not Detected (<MDL)
 -mg/kg = ppm = parts per million

Test Process



Test Report

Report No. RLSZE001296390001

Page 3 of 3

Photo(s) of the sample(s)



*** End of report ***

The test report is effective only with both signature and specialized stamp. The result(s) shown in this report refer only to the sample(s) tested. Without written approval of CTI, this report can't be reproduced except in full.

Test Report

No. CANEC1204755001

Date: 27 Apr 2012

Page 1 of 5

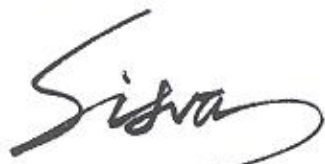
DONGGUAN QI HANG XI YE MANUFACTURING CO.,LTD

NO.1 INDUSTRIAL PARK,XIAGANG,CHANGAN TOWN,DONGGUAN CITY
CHINA

The following sample(s) was/were submitted and identified on behalf of the clients as : Lead Free Solder Paste

SGS Job No. : CP12-017386 - GZ
Date of Sample Received : 23 Apr 2012
Testing Period : 23 Apr 2012 - 27 Apr 2012
Test Requested : Selected test(s) as requested by client.
Test Method : Please refer to next page(s).
Test Results : Please refer to next page(s).

Signed for and on behalf of
SGS-CSTC Ltd.



Silva Zhou
Approved Signatory

This document is issued by the Company subject to its General Conditions of Service printed overleaf, available on request or accessible at http://www.sgs.com/terms_and_conditions.htm and, for electronic format documents, subject to Terms and Conditions for Electronic Documents at www.sgs.com/terms_e-document.htm. Attention is drawn to the limitation of liability, jurisdiction and jurisdiction issues defined therein. Any holder of this document is advised that information contained herein reflects the Company's findings at the time of its preparation only and within the limits of Client's instructions, if any. The Company's sole responsibility is to its Client and this document does not exonerate parties to a transaction from exercising all their rights and obligations under the transaction documents. This document cannot be reproduced except in full, without prior written approval of the Company. Any unauthorized alteration, forgery or falsification of the content or appearance of this document is unlawful and offenders may be prosecuted to the fullest extent of the law. Unless otherwise stated, the results shown in this test report refer only to the sample(s) tested.



Test Report

No. CANEC1204755001

Date: 27 Apr 2012

Page 2 of 5

Test Results :

Test Part Description :

Specimen No.	SGS Sample ID	Description
1	CAN12-047550.001	Grey paste

Remarks :

- (1) 1 mg/kg = 1 ppm = 0.0001%
- (2) MDL = Method Detection Limit
- (3) ND = Not Detected (< MDL)
- (4) "-" = Not Regulated

Hexabromocyclododecane (HBCDD)

Test Method : Determination of HBCDD by GC-MS based on IEC 62321:2008.

Test Item(s)	Unit	MDL	001
Hexabromocyclododecane (HBCDD)	mg/kg	10	ND

Notes :

- (1) Reference Information: Directive 2011/65/EU recasting RoHS directive 2002/95/EC:
Hexabromocyclododecane (HBCDD) is considered as a priority for risk evaluation and substance restriction.

Phthalates

Test Method : Determination of phthalates by GC-MS based on EN 14372:2004.

Test Item(s)	Unit	MDL	001
Dibutyl Phthalate (DBP)	% (w/w)	0.003	ND
Benzylbutyl Phthalate (BBP)	% (w/w)	0.003	ND
Bis-(2-ethylhexyl) Phthalate (DEHP)	% (w/w)	0.003	ND

Notes :

- (1) Reference Information: Directive 2011/65/EU recasting RoHS directive 2002/95/EC:
Bis (2-ethylhexyl) phthalate (DEHP), Butyl benzyl phthalate (BBP) and Dibutyl phthalate (DBP) are considered as a priority for risk evaluation and substance restriction.

Remark : The result(s) shown is/are of the total weight of wet sample.

This document is issued by the Company subject to its General Conditions of Service printed overleaf, available on request or accessible at http://www.sgs.com/terms_and_conditions.htm and, for electronic format documents, subject to Terms and Conditions for Electronic Documents at www.sgs.com/terms_e-document.htm. Attention is drawn to the limitation of liability, jurisdiction and jurisdiction issues defined therein. Any holder of this document is advised that information contained herein reflects the Company's findings at the time of its presentation only and within the limits of Client's instructions, if any. The Company's sole responsibility is to its Client and this document does not exonerate parties to a transaction from exercising all their rights and obligations under the transaction documents. This document cannot be reproduced except in full, without prior written approval of the Company. Any unauthorized alteration, forgery or falsification of the content or appearance of this document is unlawful and offenders may be prosecuted to the fullest extent of the law. Unless otherwise stated, the results shown in this test report refer only to the sample(s) tested.



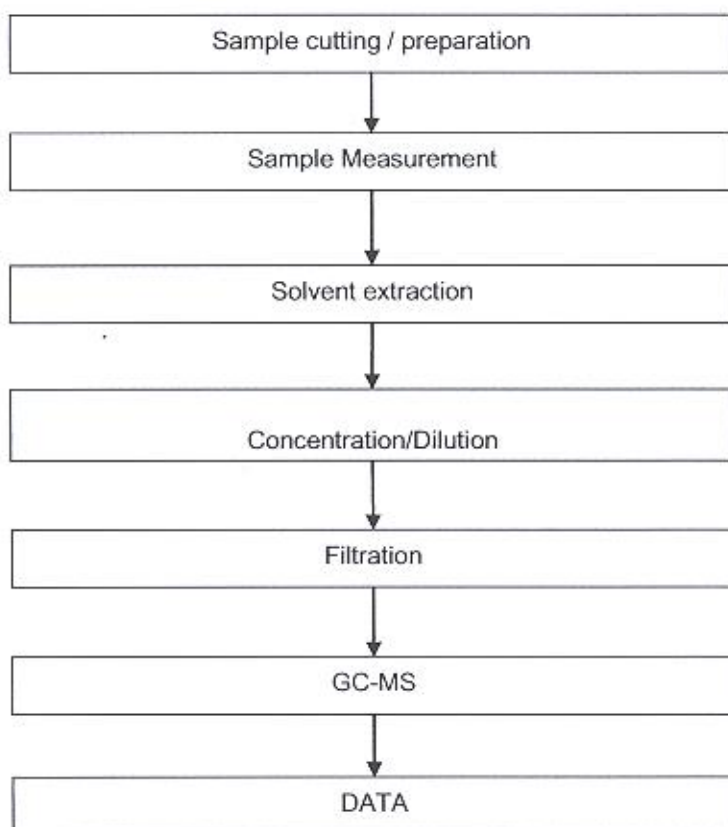
198 Kexu Road, Sci-Tech Park, Guangzhou Economic & Technology Development District, Guangzhou, China 510663 | (86-20) 82155555 | (86-20) 82075115 | www.cn.sgs.com
中国·广州·经济技术开发区科学城科珠路198号 邮编: 510663 | (86-20) 82155555 | (86-20) 82075115 | sgs.china@sgs.com

Member of the SGS Group (SGS SA)

ATTACHMENTS

HBCDD Testing Flow Chart

- 1) Name of the person who made testing: Cutey Yu
- 2) Name of the person in charge of testing: Ryan Yang



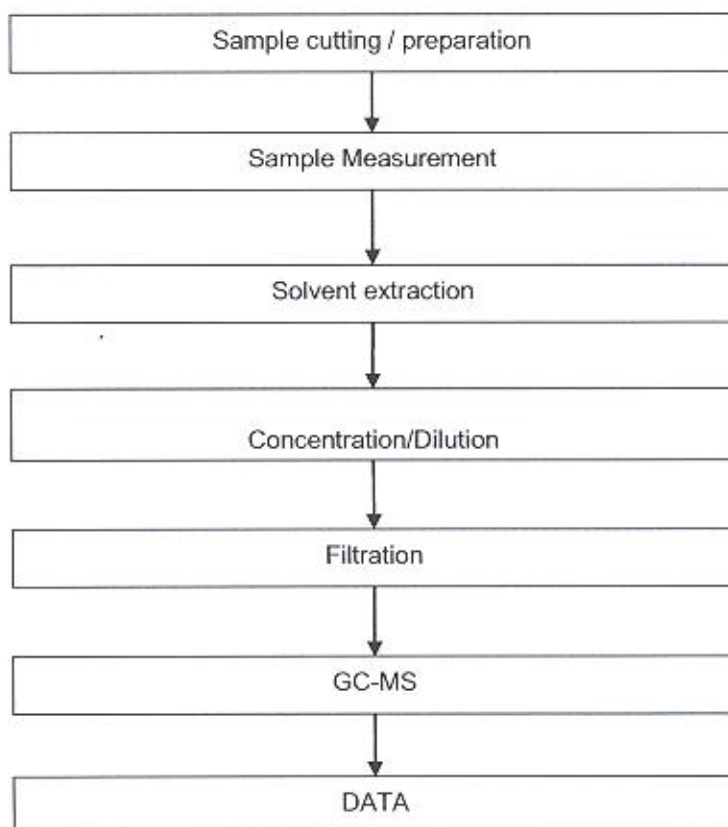
This document is issued by the Company subject to its General Conditions of Service printed overleaf, available on request or accessible at http://www.sgs.com/terms_and_conditions.htm and, for electronic format documents, subject to Terms and Conditions for Electronic Documents at www.sgs.com/terms_e-document.htm. Attention is drawn to the limitation of liability, indemnification and jurisdiction issues defined therein. Any holder of this document is advised that information contained hereon reflects the Company's findings at the time of its issuance only and within the limits of Client's instructions, if any. The Company's sole responsibility is to its Client and this document does not exonerate parties to a transaction from exercising all their rights and obligations under the transaction documents. This document cannot be reproduced except in full, without prior written approval of the Company. Any unauthorized alteration, forgery or falsification of the content or appearance of this document is unlawful and offenders may be prosecuted to the fullest extent of the law. Unless otherwise stated, the results shown in this test report refer only to the sample(s) tested.



ATTACHMENTS

Phthalates Testing Flow Chart

- 1) Name of the person who made testing: Tina Zhao
- 2) Name of the person in charge of testing: Ryan Yang



This document is issued by the Company subject to its General Conditions of Service printed overleaf, available on request or accessible at http://www.sgs.com/terms_and_conditions.htm and, for electronic format documents, subject to Terms and Conditions for Electronic Documents at www.sgs.com/terms_e-document.htm. Attention is drawn to the limitation of liability, accuracy, precision and jurisdiction issues defined therein. Any holder of this document is advised that information contained herein reflects the Company's findings at the time of its inspection only and within the limits of Client's instructions, if any. The Company's sole responsibility is to its Client and this document does not exonerate parties to a transaction from exercising all their rights and obligations under the transaction documents. This document cannot be reproduced except in full, without prior written approval of the Company. Any unauthorized alteration, forgery or falsification of the content or appearance of this document is unlawful and offenders may be prosecuted to the fullest extent of the law.



Test Report

No. CANEC1204755001

Date: 27 Apr 2012

Page 5 of 5

Sample photo:



SGS authenticate the photo on original report only

*** End of Report ***

This document is issued by the Company subject to its General Conditions of Service printed overleaf, available on request or accessible at http://www.sgs.com/terms_and_conditions.htm and, for electronic format documents, subject to Terms and Conditions for Electronic Documents at www.sgs.com/terms_e-document.htm. Attention is drawn to the limitation of liability, indemnification and jurisdiction issues defined therein. Any holder of this document is advised that information contained herein reflects the Company's findings at the time of its inspection only, and within the limits of Client's instructions, if any. The Company's sole responsibility is to its Client and this document does not exonerate parties to a transaction from exercising all their rights and obligations under the transaction documents. This document cannot be reproduced except in full, without prior written approval of the Company. Any unauthorized alteration, forgery or falsification of the content or appearance of this document is unlawful and offenders may be prosecuted to the fullest extent of the law. Unless otherwise stated, the results shown in this test report refer only to the sample(s) tested.



198 Yeche Road, Science Park, Guangzhou Economic & Technology Development District, Guangzhou, China 510663 | (86-20) 82155555 | (86-20) 82075113 | www.cn.sgs.com
 中国·广州·经济技术开发区科学城科珠路198号 邮编: 510663 | (86-20) 82155555 | (86-20) 82075113 | sgs.china@sgs.com

Member of the SGS Group (SGS SA)

Test Report

No. CTSSA/00333/12
CTS Ref. CTSSA/12/0047/Henkel

Date : 12/01/2012

Page: 1 of 5

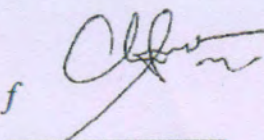
HENKEL (MALAYSIA) SDN BHD
LOT 62049, JALAN PORTLAND, TASEK INDUSTRIAL ESTATE
31400 IPOH, PERAK DARUL EHSAN

The following merchandise was (were) submitted and identified by the client as:

Sample Description	:	96SC C400 Solder Wire
Batch Number	:	O51M997117
Sample Receiving Date	:	06/01/2012
Testing Period	:	06/01/2012 to 12/01/2012

Test Requested	:	Selected test(s) as requested by client
Test Method	:	Please refer to next page(s).
Test Results	:	Please refer to next page(s).
Analysts	:	Teh Pui Sean & Tay Siam Pine

SGS LABORATORY SERVICES (M) SDN. BHD.



CHONG KIEN LEN
B.Sc. (HONS) AMIC
LAB MANAGER

This document is issued by the Company subject to its General Conditions of Service (www.sgs.com/terms_and_conditions.htm) and Terms and Conditions for Electronic Documents (www.sgs.com/terms_e-document.htm). Attention is drawn to the limitations of liability, indemnification and jurisdictional issues established therein. Even if printed this electronic document is to be treated as an original within the meaning of UCP 600 article 20b. The authenticity of this document may be verified at www.sgs.com/verification. Any holder of this document is advised that information contained hereon reflects the Company's findings at the time of its intervention only and within the limits of client's instructions, if any. The Company's sole responsibility is to its Client and this document does not exonerate parties to a transaction from exercising all their rights and obligations under the transaction documents. Unless otherwise stated the results shown in this test report refer only to the sample(s) tested and such sample(s) are retained for three months only.

Test Report

No. CTSSA/00333/12

Date : 12/01/2012

Page: 2 of 5

CTS Ref. CTSSA/12/0047/Henkel

Test results:

Test Part Description :

Sample Description : 96SC C400 Solder Wire
Batch Number : 051M997117

RoHS Directive 2011/65/EU Annex II

Test Item(s):	Unit	Test Method	Results	MDL
Cadmium (Cd)	mg/kg	With reference to IEC 62321:2008, and performed by ICP-OES	N.D.	2
Lead (Pb)	mg/kg	With reference to IEC 62321:2008, and performed by ICP-OES	302	2
Mercury (Hg)	mg/kg	With reference to IEC 62321:2008, and performed by ICP-OES	N.D.	2
Hexavalent Chromium (CrVI) by Spot test / boiling water extraction (optional) #	---	With reference to IEC 62321:2008	Negative	-
Sum of PBBs	mg/kg	With reference to IEC 62321:2008, and performed by GC-MS	N.D.	-
Monobromobiphenyl	mg/kg	With reference to IEC 62321:2008, and performed by GC-MS	N.D.	5
Dibromobiphenyl	mg/kg	With reference to IEC 62321:2008, and performed by GC-MS	N.D.	5
Tribromobiphenyl	mg/kg	With reference to IEC 62321:2008, and performed by GC-MS	N.D.	5
Tetrabromobiphenyl	mg/kg	With reference to IEC 62321:2008, and performed by GC-MS	N.D.	5
Hexabromobiphenyl	mg/kg	With reference to IEC 62321:2008, and performed by GC-MS	N.D.	5
Pentabromobiphenyl	mg/kg	With reference to IEC 62321:2008, and performed by GC-MS	N.D.	5
Heptabromobiphenyl	mg/kg	With reference to IEC 62321:2008, and performed by GC-MS	N.D.	5
Octabromobiphenyl	mg/kg	With reference to IEC 62321:2008, and performed by GC-MS	N.D.	5
Nonabromobiphenyl	mg/kg	With reference to IEC 62321:2008, and performed by GC-MS	N.D.	5
Decabromobiphenyl	mg/kg	With reference to IEC 62321:2008, and performed by GC-MS	N.D.	5

SGS LABORATORY SERVICES (M) SDN. BHD.

Chong Kien Len

CHONG KIEN LEN
B.Sc.(HONS) AMIC
LAB MANAGER

This document is issued by the Company subject to its General Conditions of Service (www.sgs.com/terms_and_conditions.htm) and Terms and Conditions for Electronic Documents (www.sgs.com/terms_e-document.htm). Attention is drawn to the limitations of liability, indemnification and jurisdictional issues established therein. Even if printed this electronic document is to be treated as an original within the meaning of UCP 600 article 20b. The authenticity of this document may be verified at www.sgs.com/online_authentication. Any holder of this document is advised that information contained hereon reflects the Company's findings at the time of its intervention only and within the limits of client's instructions, if any. The Company's sole responsibility is to its Client and this document does not exonerate parties to a transaction from exercising all their rights and obligations under the transaction documents. Unless otherwise stated the results shown in this test report refer only to the sample(s) tested and such sample(s) are retained for three months only.

Test Report

No. CTSSA/00333/12

Date : 12/01/2012

Page: 3 of 5

CTS Ref. CTSSA/12/0047/Henkel

Sum of PBDEs	mg/kg	With reference to IEC 62321:2008, and performed by GC-MS	N.D.	-
Monobromodiphenyl ether	mg/kg	With reference to IEC 62321:2008, and performed by GC-MS	N.D.	5
Dibromodiphenyl ether	mg/kg	With reference to IEC 62321:2008, and performed by GC-MS	N.D.	5
Tribromodiphenyl ether	mg/kg	With reference to IEC 62321:2008, and performed by GC-MS	N.D.	5
Tetrabromodiphenyl ether	mg/kg	With reference to IEC 62321:2008, and performed by GC-MS	N.D.	5
Pentabromodiphenyl ether	mg/kg	With reference to IEC 62321:2008, and performed by GC-MS	N.D.	5
Hexabromodiphenyl ether	mg/kg	With reference to IEC 62321:2008, and performed by GC-MS	N.D.	5
Heptabromodiphenyl ether	mg/kg	With reference to IEC 62321:2008, and performed by GC-MS	N.D.	5
Octabromodiphenyl ether	mg/kg	With reference to IEC 62321:2008, and performed by GC-MS	N.D.	5
Nonabromodiphenyl ether	mg/kg	With reference to IEC 62321:2008, and performed by GC-MS	N.D.	5
Decabromodiphenyl ether	mg/kg	With reference to IEC 62321:2008, and performed by GC-MS	N.D.	5

Note : (a) mg/kg = ppm ; (0.1wt% = 1000ppm)

(b) N.D. = Not Detected

(c) MDL = Method Detection Limit

(d) # = **Spot-Test:**

a. Negative means the absence of Cr(VI) on the tested areas

b. Positive means the presence of Cr(VI) on the tested areas

(The tested sample should be further verified by boiling-water-extraction method if the spot test result is negative or cannot be confirmed)

Boiling water extraction:

a. Negative means the absence of Cr(VI) on the tested areas

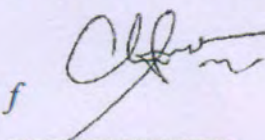
b. Positive means the presence of Cr(VI) on the tested areas;

The detected concentration in 50 mL boiling water extraction solution is equal or greater than 0.02 mg/kg with 50 cm² sample surface area.

For corrosion protection coatings on metals: Information on storage conditions and production date of the tested sample is unavailable and thus results of Cr(VI) represent status of the sample at the time of testing.

(e) - = Not regulated

SGS LABORATORY SERVICES (M) SDN. BHD.



CHONG KIEN LEN
B.Sc.(HONS) AMIC
LAB MANAGER

This document is issued by the Company subject to its General Conditions of Service (www.sgs.com/terms_and_conditions.htm) and Terms and Conditions for Electronic Documents (www.sgs.com/terms_e-document.htm). Attention is drawn to the limitations of liability, indemnification and jurisdictional issues established therein. Even if printed this electronic document is to be treated as an original within the meaning of UCP 600 article 20b. The authenticity of this document may be verified at www.sgs.com/secure_authentication.htm. Any holder of this document is advised that information contained hereon reflects the Company's findings at the time of its intervention only and within the limits of client's instructions, if any. The Company's sole responsibility is to its Client and this document does not exonerate parties to a transaction from exercising all their rights and obligations under the transaction documents. Unless otherwise stated the results shown in this test report refer only to the sample(s) tested and such sample(s) are retained for three months only.

Test Report

No. CTSSA/00333/12
CTS Ref. CTSSA/12/0047/Henkel

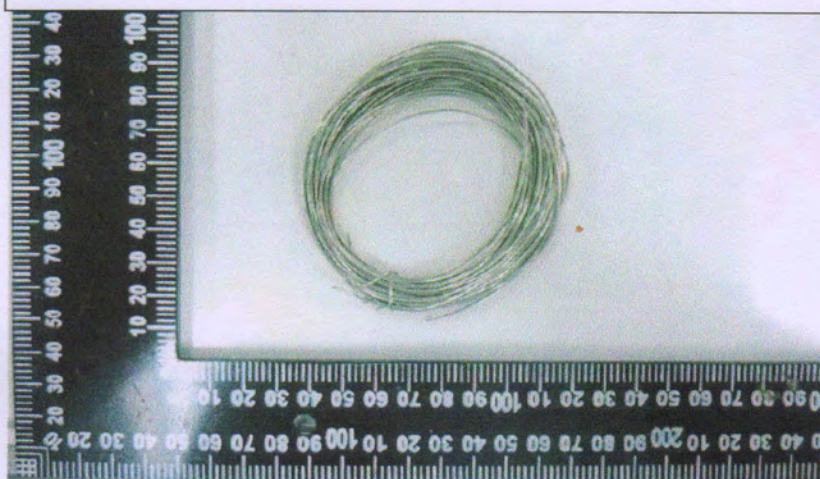
Date : 12/01/2012

Page: 4 of 5

Test Part Description :

Sample Description : 96SC C400 Solder Wire
Batch Number : 051M997117

HENKEL (MALAYSIA) SDN BHD
CTSSA/00333/12



SGS authenticate the photo on original report only

SGS LABORATORY SERVICES (M) SDN. BHD.

Chong Kien Len

CHONG KIEN LEN
B.Sc.(HONS) AMIC
LAB MANAGER

This document is issued by the Company subject to its General Conditions of Service (www.sgs.com/terms_and_conditions.htm) and Terms and Conditions for Electronic Documents (www.sgs.com/terms_e-document.htm). Attention is drawn to the limitations of liability, indemnification and jurisdictional issues established therein. Even if printed this electronic document is to be treated as an original within the meaning of UCP 600 article 20b. The authenticity of this document may be verified at www.sgs.com/secure_authentication. Any holder of this document is advised that information contained hereon reflects the Company's findings at the time of its intervention only and within the limits of client's instructions, if any. The Company's sole responsibility is to its Client and this document does not exonerate parties to a transaction from exercising all their rights and obligations under the transaction documents. Unless otherwise stated the results shown in this test report refer only to the sample(s) tested and such sample(s) are retained for three months only.

Test Report

No. CTSSA/00333/12

Date : 12/01/2012

Page: 5 of 5

CTS Ref. CTSSA/12/0047/Henkel

1. DETERMINATION OF CADMIUM CONTENT BY IEC 62321 2008

Sample Receiving and Registration
↓
Cut sample in small pieces
↓
Weight sample (0.2-0.5g) into digestion vessel
↓
Acid digestion (Microwave)
↓
"Totally Dissolved"
↓
Filtration
↓
Analyses by ICP

2. DETERMINATION OF LEAD CONTENT BY IEC 62321 2008

Sample Receiving and Registration
↓
Cut sample in small pieces
↓
Weight sample (0.2-0.5g) into digestion vessel
↓
Acid digestion (Microwave)
↓
"Totally Dissolved"
↓
Filtration
↓
Analyses by ICP

3. DETERMINATION OF MERCURY CONTENT BY IEC 62321 2008

Sample Receiving and Registration
↓
Cut sample in small pieces
↓
Weight sample (0.2-0.5g) into digestion vessel
↓
Acid digestion (Microwave)
↓
"Totally Dissolved"
↓
Filtration
↓
Analyses by ICP

4. DETERMINATION OF HEXAVALENT CHROMIUM BY IEC 62321 2008

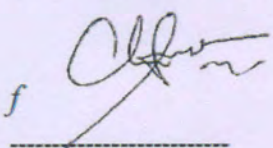
Sample Receiving and Registration
↓
Sample Preparation
↓
Spot-test (Qualitative)
↓
Boiling-water-extraction
↓
Analyses by UV- Spectrophotometer
↓
Test Report

5. DETERMINATION OF PBB/PBDE WITH GC-MS BY IEC 62321 2008

Cut sample in small pieces
↓
Weight sample (0.5-4.0g) into extraction thimble
↓
Soxhlet Extraction with Toluene
↓
Filter through 0.45 µm membrane filter
↓
Analyses by GC-MS (with appropriate dilution)

**** End of Report ****

SGS LABORATORY SERVICES (M) SDN. BHD.


CHONG KIEN LEN
B.Sc.(HONS) AMIC
LAB MANAGER

This document is issued by the Company subject to its General Conditions of Service (www.sgs.com/terms_and_conditions.htm) and Terms and Conditions for Electronic Documents (www.sgs.com/terms_e-document.htm).
Attention is drawn to the limitations of liability, indemnification and jurisdictional issues established therein. Even if printed this electronic document is to be treated as an original within the meaning of UCP 600 article 20b.
The authenticity of this document may be verified at www.sgs.com/verify_authentication.htm. Any holder of this document is advised that information contained herein reflects the Company's findings at the time of its intervention only and within the limits of client's instructions, if any. The Company's sole responsibility is to its Client and this document does not exonerate parties to a transaction from exercising all their rights and obligations under the transaction documents. Unless otherwise stated the results shown in this test report refer only to the sample(s) tested and such sample(s) are retained for three months only.



Test Report

No. TSNEC1110357903

Date: 26 Oct 2011

Page 1 of 5

The following sample(s) was/were submitted and identified on behalf of the clients as : TIN-COATED COPPER WIRE

SGS Job No. : TP11-002184 - TJ
Composition : Cu
Date of Sample Received : 21 Oct 2011
Testing Period : 21 Oct 2011 - 26 Oct 2011
Test Requested : Selected test(s) as requested by client.
Test Method : Please refer to next page(s).
Test Results : Please refer to next page(s).
Conclusion : Based on the performed tests on submitted samples, the results of Lead, Mercury, Cadmium, Hexavalent chromium, Polybrominated biphenyls (PBB), Polybrominated diphenyl ethers (PBDE) comply with the limits as set by RoHS Directive 2011/65/EU Annex II; recasting 2002/95/EC.

Signed for and on behalf of
SGS-CSTC Ltd.

Reabeca Zhou
Approved Signatory

This document is issued by the Company subject to its General Conditions of Service printed overleaf, available on request or accessible at http://www.sgs.com/terms_and_conditions.htm and, for electronic format documents, subject to Terms and Conditions for Electronic Documents at www.sgs.com/terms_e-document.htm. Attention is drawn to the limitation of liability, jurisdiction and jurisdiction issues defined therein. Any holder of this document is advised that information contained hereon reflects the Company's findings at the time of its inspection only and within the limits of Client's instructions, if any. The Company's sole responsibility is to its Client and this document does not exonerate parties to a transaction from exercising all their rights and obligations under the transaction documents. This document cannot be reproduced except in full, without prior written approval of the Company. Any unauthorized alteration, forgery or falsification of the content or appearance of this document is unlawful and offenders may be prosecuted to the fullest extent of the law. Unless otherwise stated, the results shown in this test report refer only to the sample(s) tested.



Test Report

No. TSNEC1110357903

Date: 26 Oct 2011

Page 2 of 5

Test Results :

Test Part Description :

Specimen No.	SGS Sample ID	Description
1	TSN11-103579.002	silvery metal wire

Remarks :

- (1) 1 mg/kg = 1 ppm = 0.0001%
- (2) MDL = Method Detection Limit
- (3) ND = Not Detected (< MDL)
- (4) "-" = Not Regulated

RoHS Directive 2011/65/EU

Test Method : With reference to IEC 62321:2008

- (1) Determination of Cadmium by ICP-OES.
- (2) Determination of Lead by ICP-OES.
- (3) Determination of Mercury by ICP-OES.
- (4) Determination of Hexavalent Chromium by Spot test / Colorimetric Method using UV-Vis.
- (5) Determination of PBBs / PBDEs by GC-MS.

Test Item(s)	Limit	Unit	MDL	002
Cadmium (Cd)	100	mg/kg	2	ND
Lead (Pb)	1,000	mg/kg	2	ND
Mercury (Hg)	1,000	mg/kg	2	ND
Hexavalent Chromium (Cr(VI))	-	-	◇	Negative
Sum of PBBs	1,000	mg/kg	-	ND
Monobromobiphenyl	-	mg/kg	5	ND
Dibromobiphenyl	-	mg/kg	5	ND
Tribromobiphenyl	-	mg/kg	5	ND
Tetrabromobiphenyl	-	mg/kg	5	ND
Pentabromobiphenyl	-	mg/kg	5	ND
Hexabromobiphenyl	-	mg/kg	5	ND
Heptabromobiphenyl	-	mg/kg	5	ND
Octabromobiphenyl	-	mg/kg	5	ND
Nonabromobiphenyl	-	mg/kg	5	ND
Decabromobiphenyl	-	mg/kg	5	ND
Sum of PBDEs	1,000	mg/kg	-	ND
Monobromodiphenyl ether	-	mg/kg	5	ND

This document is issued by the Company subject to its General Conditions of Service printed overleaf, available on request or accessible at http://www.sgs.com/terms_and_conditions.htm and, for electronic format documents, subject to Terms and Conditions for Electronic Documents at www.sgs.com/terms_e-document.htm. Attention is drawn to the limitation of liability, jurisdiction and jurisdiction issues defined therein. Any holder of this document is advised that information contained hereon reflects the Company's findings at the time of its inspection only and within the limits of Client's instructions, if any. The Company's sole responsibility is to its Client and this document does not exonerate parties to a transaction from exercising all their rights and obligations under the transaction documents. This document cannot be reproduced except in full, without prior written approval of the Company. Any unauthorized alteration, forgery or falsification of the content or appearance of this document is unlawful and offenders may be prosecuted to the fullest extent of the law. Unless otherwise indicated, the results shown in this test report refer only to the sample(s) tested.

Test Report

No. TSNEC1110357903

Date: 26 Oct 2011

Page 3 of 5

Test Item(s)	Limit	Unit	MDL	002
Dibromodiphenyl ether	-	mg/kg	5	ND
Tribromodiphenyl ether	-	mg/kg	5	ND
Tetrabromodiphenyl ether	-	mg/kg	5	ND
Pentabromodiphenyl ether	-	mg/kg	5	ND
Hexabromodiphenyl ether	-	mg/kg	5	ND
Heptabromodiphenyl ether	-	mg/kg	5	ND
Octabromodiphenyl ether	-	mg/kg	5	ND
Nonabromodiphenyl ether	-	mg/kg	5	ND
Decabromodiphenyl ether	-	mg/kg	5	ND

Notes :

(1) The maximum permissible limit is quoted from directive 2011/65/EU, Annex II.

(2) ◇ Spot-test:

Negative = Absence of Cr(VI) coating, Positive = Presence of Cr(VI) coating;

The tested sample should be further verified by boiling-water-extraction method if the spot test result is Negative or cannot be confirmed.

◇ Boiling-water-extraction:

Negative = Absence of Cr(VI) coating; Positive = Presence of Cr(VI) coating

The detected concentration in boiling-water-extraction solution is equal or greater than 0.02 mg/kg with 50 cm² sample surface area.

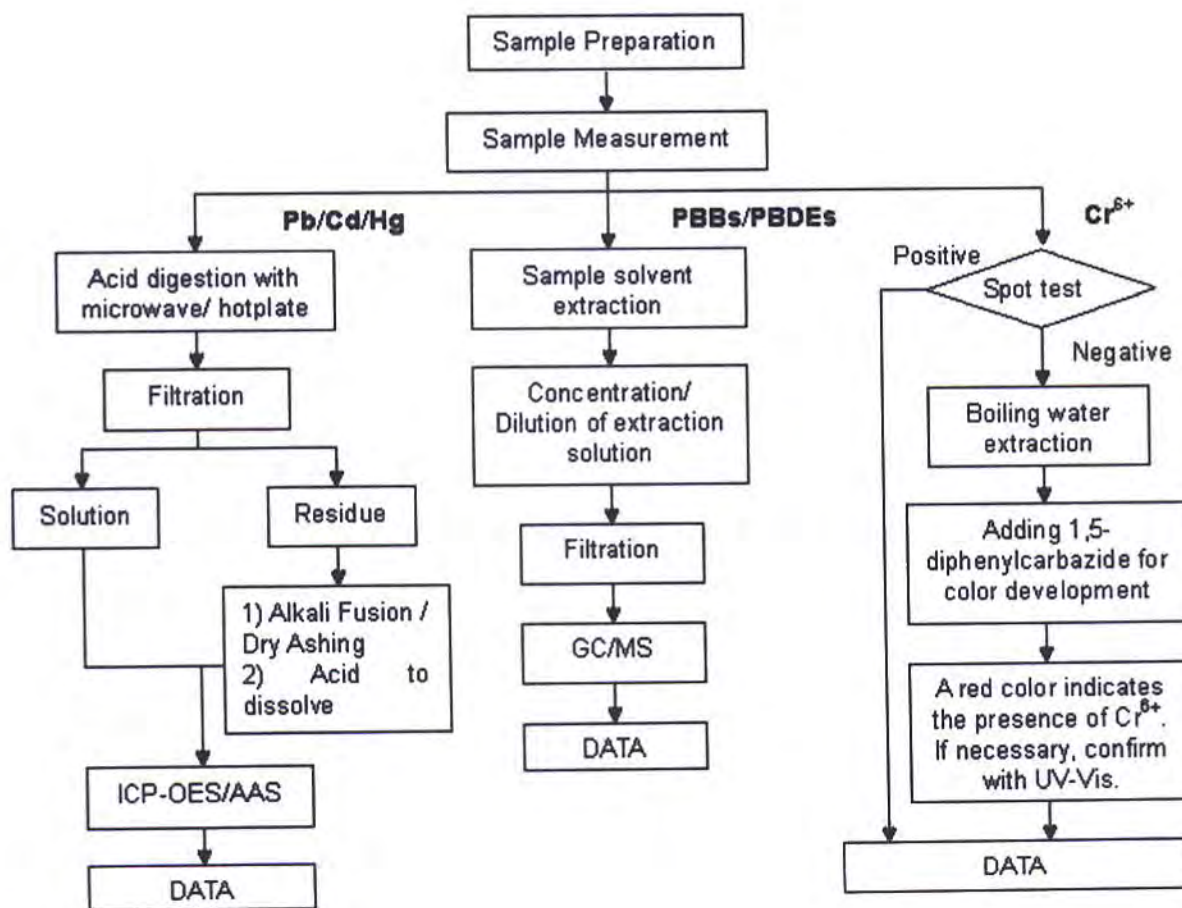
For corrosion protection coatings on metals: Information on storage conditions and production date of the tested sample is unavailable and thus results of Cr(VI) represent status of the sample at the time of testing

This document is issued by the Company subject to its General Conditions of Service printed overleaf, available on request or accessible at http://www.sgs.com/terms_and_conditions.htm and for electronic format documents, subject to Terms and Conditions for Electronic Documents at www.sgs.com/terms_e-document.htm. Attention is drawn to the limitation of liability, jurisdiction and jurisdiction issues defined therein. Any holder of this document is advised that information contained hereon reflects the Company's findings at the time of its inspection only and within the limits of Client's instructions, if any. The Company's sole responsibility is to its Client and this document does not exonerate parties to a transaction from exercising all their rights and obligations under the transaction documents. This document cannot be reproduced except in full, without prior written approval of the Company. Any unauthorized alteration, forgery or falsification of the content or appearance of this document is unlawful and offenders may be prosecuted to the fullest extent of the law. Unless otherwise stated, the results shown in this test report refer only to the sample(s) tested.

ATTACHMENTS

Cd/Pb/Hg/Cr⁶⁺/PBBs/PBDEs Testing Flow Chart

- 1) Name of the person who made testing: Aaron Wang/Jason Li/Angell Yao
- 2) Name of the person in charge of testing: Cindy Yin/Rex Zhu
- 3) These samples were dissolved totally by pre-conditioning method according to below flow chart.
(Cr⁶⁺ and PBBs/PBDEs test method excluded)



Test Report

No. TSNEC1110357903

Date: 26 Oct 2011

Page 5 of 5

Sample photo:



SGS authenticate the photo on original report only

*** End of Report ***

This document is issued by the Company subject to its General Conditions of Service printed overleaf, available on request or accessible at http://www.sgs.com/terms_and_conditions.htm and, for electronic format documents, subject to Terms and Conditions for Electronic Documents at www.sgs.com/terms_e-document.htm. Attention is drawn to the limitation of liability, jurisdiction and jurisdiction issues defined therein. Any holder of this document is advised that information contained hereon reflects the Company's findings at the time of its inspection only and within the limits of Client's instructions, if any. The Company's sole responsibility is to its Client and this document does not exonerate parties to a transaction from exercising all their rights and obligations under the transaction documents. This document cannot be reproduced except in full, without prior written approval of the Company. Any unauthorized alteration, forgery or falsification of the content or appearance of this document is unlawful and offenders may be prosecuted to the fullest extent of the law. Unless otherwise stated, the results shown in this test report refer only to the sample(s) tested.

Test Report

Number: SZHH0071859103

Applicant: LITTELFUSE, INC
8755 WEST HIGGINS ROAD SUITE
500CHICAGO IL 60631 USA

Date: Aug 16, 2012

Attn: KRISTEEN BACILA/ARSENIO CESISTA JR.

Sample Description:

One (1) submitted sample said to be **transparent yellow glue (hot melt)**.
Part No. : MS267.



Tests conducted:

As requested by the applicant, refer to attached page(s) for details.

Conclusion:

<u>Tested Sample</u>	<u>Standard</u>	<u>Result</u>
Submitted sample	Restriction of the use of certain hazardous substance in electrical and electronic equipment (RoHS Directive 2002/95/EC and superseding 2011/65/EU)	See test conducted
	Phthalates content requirement in Annex XVII Items 51 & 52 of the REACH Regulation (EC) No. 1907/2006 & Amendment No. 552/2009 (formerly known as Directive 2005/84/EC) (DEHP, DBP & BBP)	Pass
	<u>Test Item</u> Hexabromocyclododecane Content	See test conducted
	Halogen (F, Cl, Br, I) Content	See test conducted

Authorized by:
For Intertek Testing Services
Shenzhen Ltd.



Ben N.L. Lin
General Manager

Test Report

Number: SZHH0071859103

Tests Conducted

1 RoHS Chemical Test

(A) Test Result Summary:

Testing Item	Result
Cadmium (Cd) Content (mg/kg)	ND(<2)
Lead (Pb) Content (mg/kg)	ND(<2)
Mercury (Hg) Content (mg/kg)	ND(<2)
Chromium (VI)(Cr ⁶⁺) Content (mg/kg)	ND(<1)
Polybrominated Biphenyls (PBBs)(mg/kg)	
Monobromobiphenyl (MonoBB)	ND(<5)
Dibromobiphenyl (DiBB)	ND(<5)
Tribromobiphenyl (TriBB)	ND(<5)
Tetrabromobiphenyl (TetraBB)	ND(<5)
Pentabromobiphenyl (PentaBB)	ND(<5)
Hexabromobiphenyl (HexaBB)	ND(<5)
Heptabromobiphenyl (HeptaBB)	ND(<5)
Octabromobiphenyl (OctaBB)	ND(<5)
Nonabromobiphenyl (NonaBB)	ND(<5)
Decabromobiphenyl (DecaBB)	ND(<5)
Polybrominated Diphenyl Ethers (PBDEs)(mg/kg)	
Monobromodiphenyl Ether (MonoBDE)	ND(<5)
Dibromodiphenyl Ether (DiBDE)	ND(<5)
Tribromodiphenyl Ether (TriBDE)	ND(<5)
Tetrabromodiphenyl Ether (TetraBDE)	ND(<5)
Pentabromodiphenyl Ether (PentaBDE)	ND(<5)
Hexabromodiphenyl Ether (HexaBDE)	ND(<5)
Heptabromodiphenyl Ether (HeptaBDE)	ND(<5)
Octabromodiphenyl Ether (OctaBDE)	ND(<5)
Nonabromodiphenyl Ether (NonaBDE)	ND(<5)
Decabromodiphenyl Ether (DecaBDE)	ND(<5)

Chemist: Wang Haijun/Zeng Guoliang

mg/kg = milligram per kilogram = ppm

< = Less than

ND = Not detected

Test Report

Number: SZHH0071859103

Tests Conducted

(B) RoHS Requirement:

Restricted Substances	Limits
Cadmium (Cd)	0.01% (100 mg/kg)
Lead (Pb)	0.1% (1000 mg/kg)
Mercury (Hg)	0.1% (1000 mg/kg)
Chromium (VI) (Cr ⁶⁺)	0.1% (1000 mg/kg)
Polybrominated Biphenyls (PBBs)	0.1% (1000 mg/kg)
Polybrominated Diphenyl Ethers (PBDEs)	0.1% (1000 mg/kg)

The above limits were quoted from 2002/95/EC and superseding 2011/65/EU for homogeneous material.

(C) Test Method:

Testing Item	Testing Method	Reporting Limit
Cadmium (Cd) Content	With reference to IEC 62321 Edition 1.0:2008, by acid digestion and determined by ICP - OES	2 mg/kg
Lead (Pb) Content	With reference to IEC 62321 Edition 1.0:2008, by acid digestion and determined by ICP - OES	2 mg/kg
Mercury (Hg) Content	With reference to IEC 62321 Edition 1.0:2008, by acid digestion and determined by ICP - OES	2 mg/kg
Chromium (VI)(Cr ⁶⁺) Content	With reference to IEC 62321 Edition 1.0:2008, by alkaline digestion and determined by UV-VIS Spectrophotometer	1 mg/kg
Polybrominated Biphenyls (PBBs)& Polybrominated Diphenyl Ethers (PBDEs)	With reference to IEC 62321 Edition 1.0:2008, by solvent extraction and determined by GC/MS and further HPLC confirmation when necessary	5 mg/kg

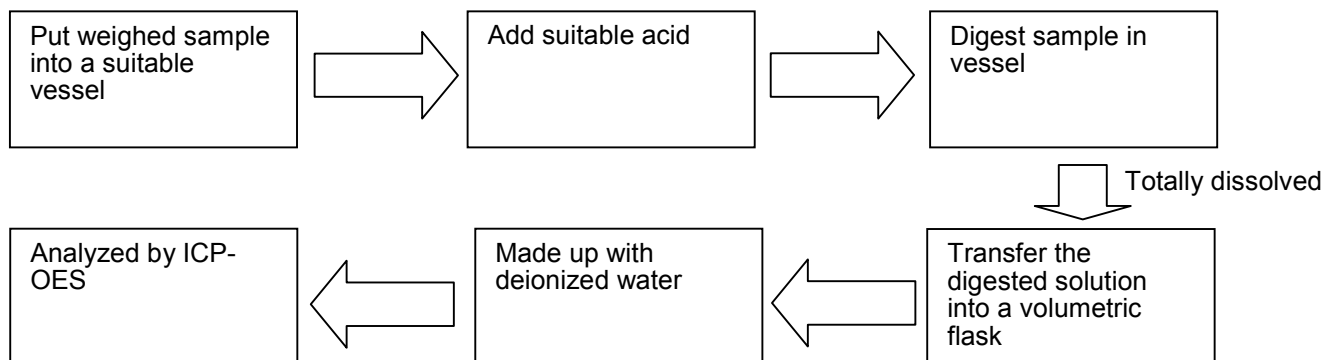
Date sample received: Aug 10, 2012

Testing period: Aug 10, 2012 to Aug 13, 2012

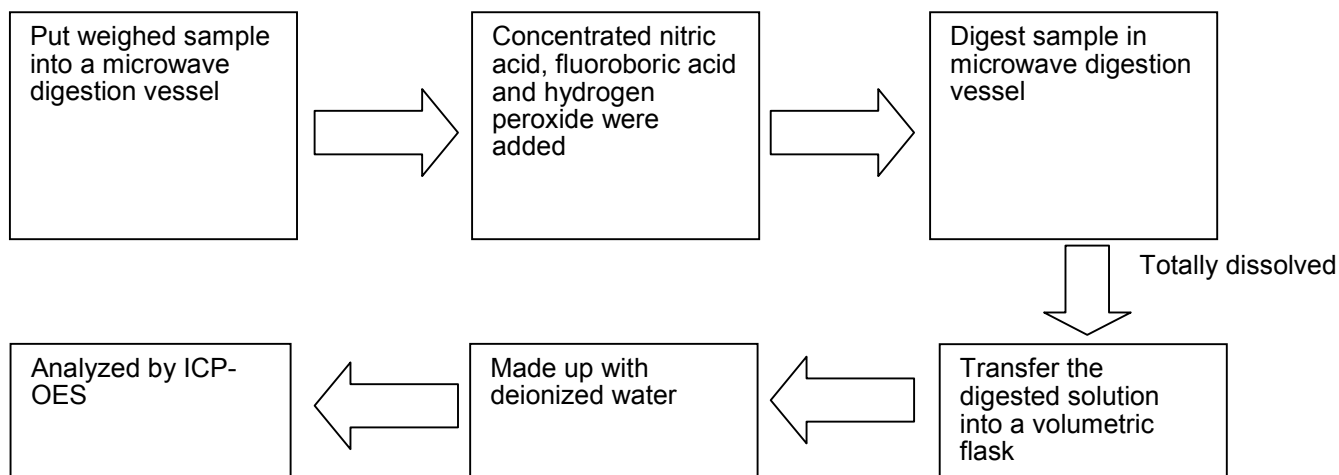
Tests Conducted

(D) Measurement Flowchart:

1. Test for Cd/Pb Contents

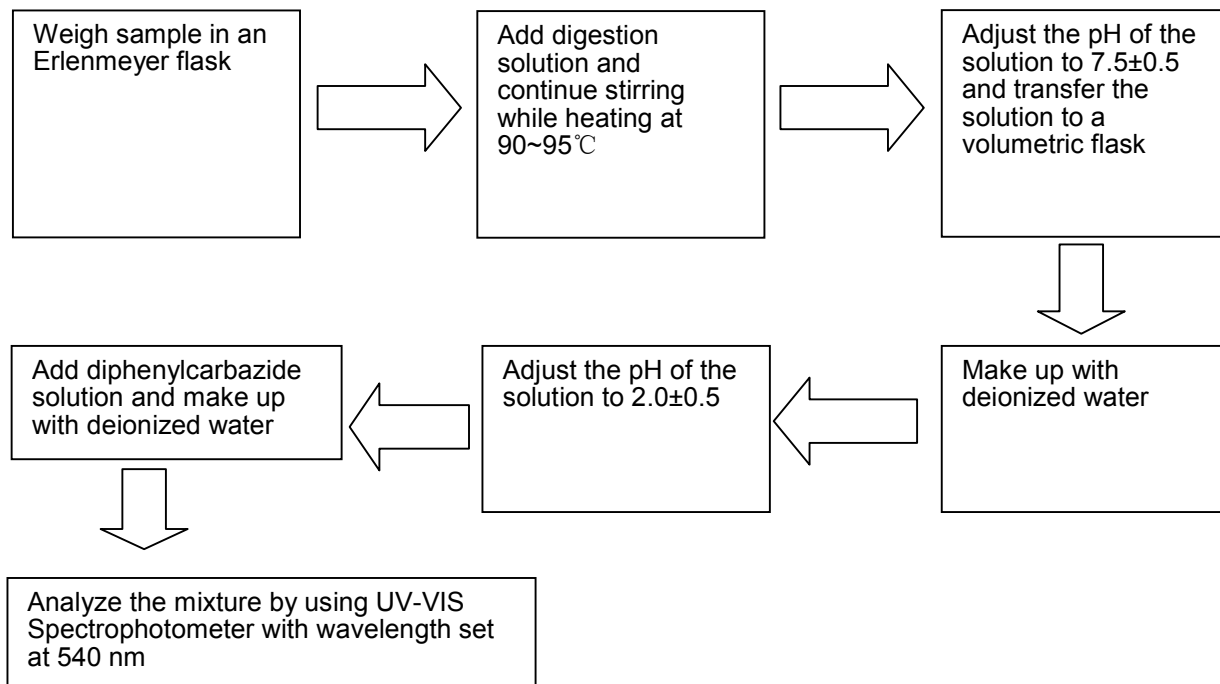


2. Test for Hg Content

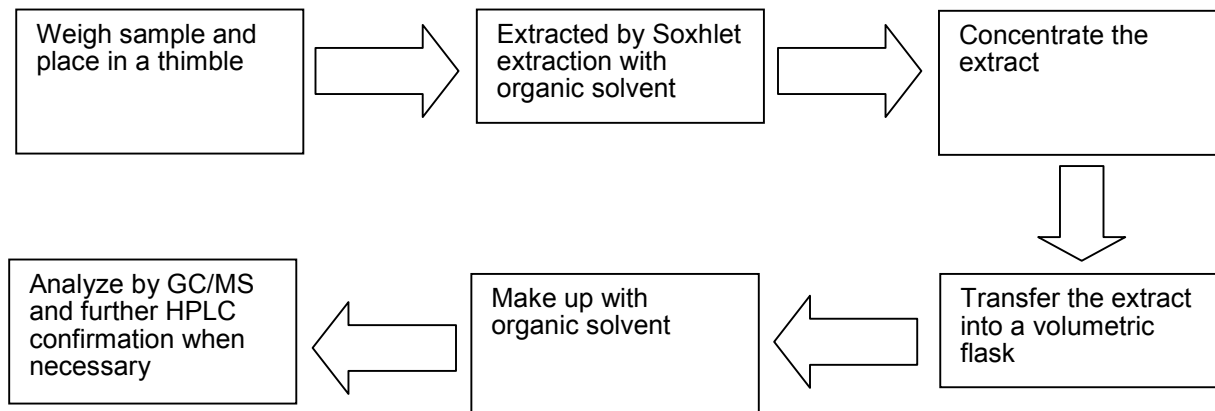


Tests Conducted

3. Test for Chromium (VI) (Cr^{6+}) Content (Alkaline Digestion)



4. Test for PBBs/PBDEs Contents



Test Report

Number: SZHH0071859103

Tests Conducted

2 Phthalate Content

With reference to EN14372, by Gas chromatographic-Mass Spectrometric (GC-MS) analysis.

	<u>Result (%)</u>
Dibutyl phthalate (DBP)	<0.01
Di-(2-ethyl hexyl) phthalate (DEHP)	<0.01
Benzyl butyl phthalate (BBP)	<0.01
Sum of three phthalates	<0.01
Limit	0.1 %

The above limit was quoted according to Annex XVII Items 51 & 52 of the REACH Regulation (EC) No. 1907/2006 & Amendment No. 552/2009(formerly known as Directive 2005/84/EC) for phthalate content in toys and children articles.

< = Less than

Date sample received :Aug 10, 2012
Testing period :Aug 10, 2012 to Aug 15, 2012

3 Hexabromocyclododecane (HBCDD) Content:

By solvent extraction followed by Gas Chromatographic - Mass Spectrometric (GC-MS) analysis.

Result : Less than 10 mg/kg

mg/kg =milligram per kilogram

Date sample received: Aug 10, 2012
Testing period: Aug 10, 2012 to Aug 14, 2012

Test Report

Number: SZHH0071859103

Tests Conducted

4 Halogen Content

(I) Test Result Summary:

<u>Testing Item</u>	<u>Result (mg/kg)</u>
Fluorine (F) Content	ND
Chlorine (Cl) Content	1130
Bromine (Br) Content	ND
Iodine (I) Content	ND

mg/kg= milligram per kilogram = ppm

ND= Not detected

(II) Test Method:

<u>Testing Item</u>	<u>Testing Method</u>	<u>Reporting Limit</u>
Halogen (F, Cl, Br, I) Content	With reference to BS EN 14582:2007, by calorimetric bomb and determined by Ion Chromatography	50 mg/kg

Reporting limit = Quantitation limit of analyte in sample

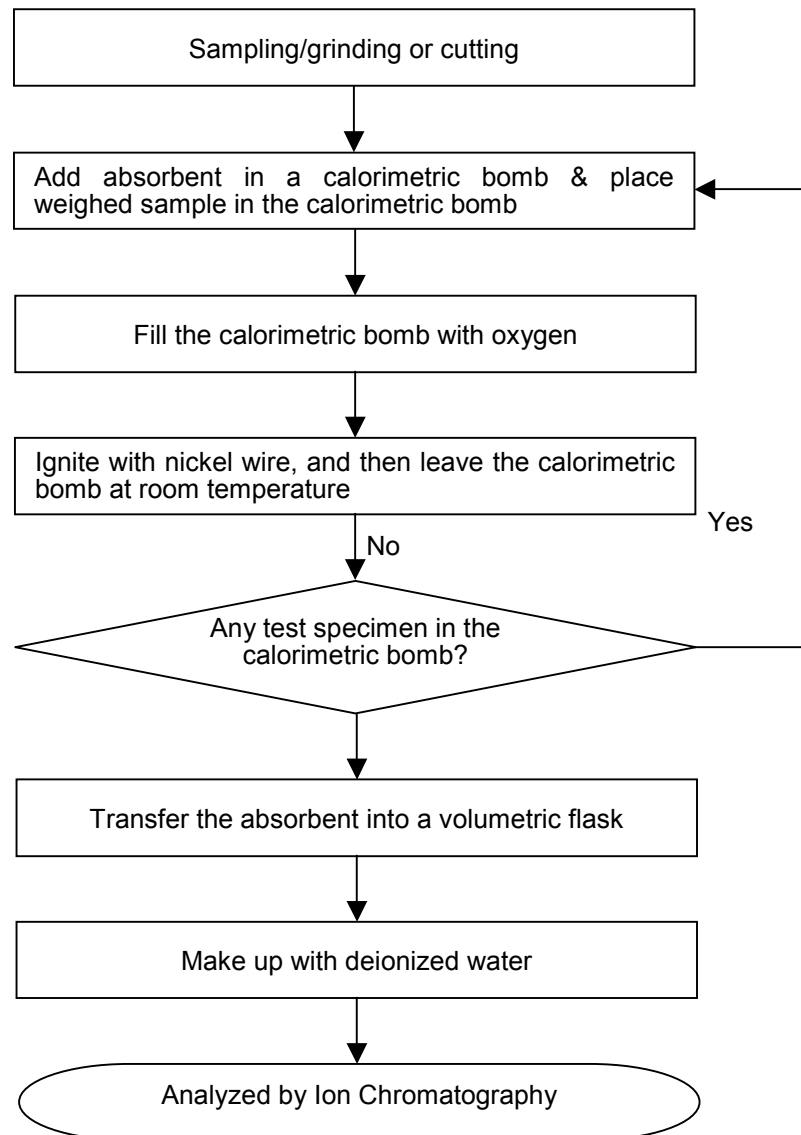
Date sample received :Aug 10, 2012

Testing period :Aug 10, 2012 to Aug 14, 2012

Tests Conducted

(III) Measurement Flowchart:

Test for Halogen Content (Reference Method: BS EN 14582:2007)



End of report

This report is made solely on the basis of your instructions and/or information and materials supplied by you. It is not intended to be a recommendation for any particular course of action. Intertek does not accept a duty of care or any other responsibility to any person other than the Client in respect of this report and only accepts liability to the Client insofar as is expressly contained in the terms and conditions governing Intertek's provision of services to you. Intertek makes no warranties or representations either express or implied with respect to this report save as provided for in those terms and conditions. We have aimed to conduct the Review on a diligent and careful basis and we do not accept any liability to you for any loss arising out of or in connection with this report, in contract, tort, by statute or otherwise, except in the event of our gross negligence or wilful misconduct.

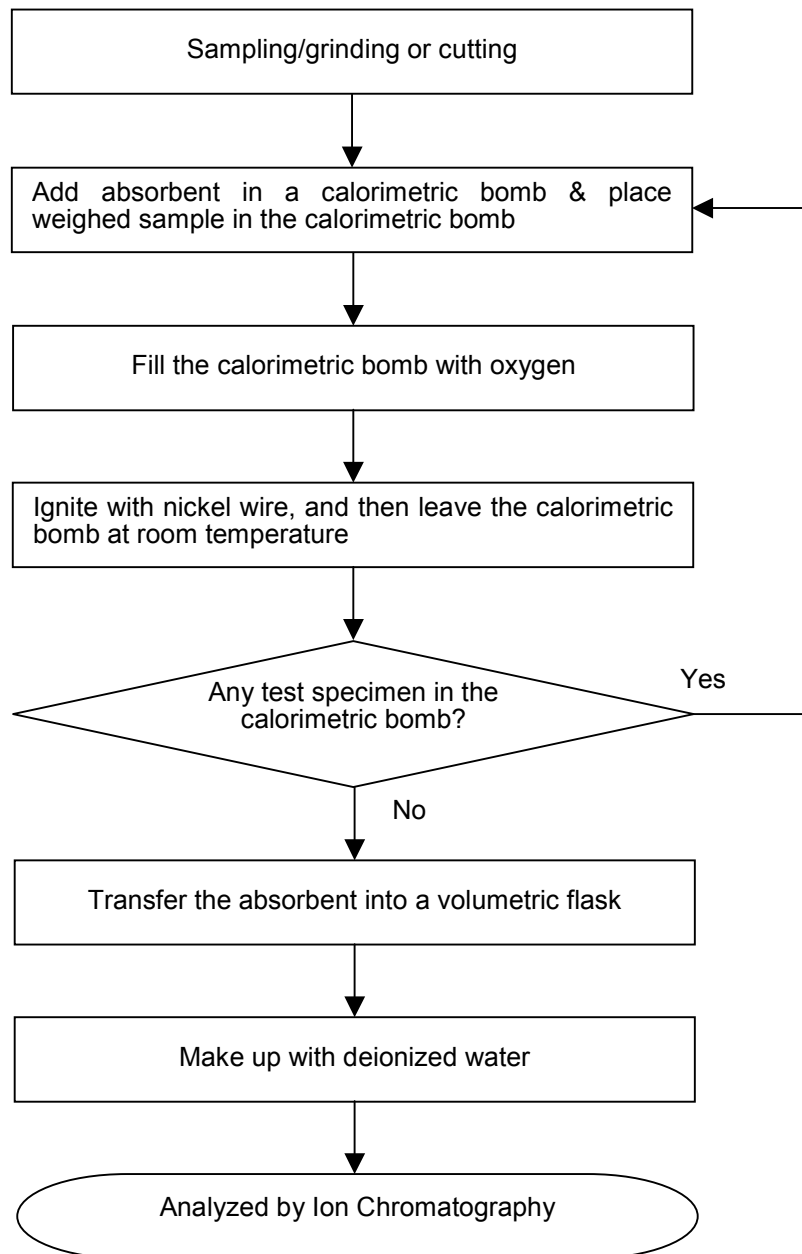
Test Report

Number: SZHH0061988303

Tests Conducted

(III) Measurement Flowchart:

Test for Halogen Content (Reference Method: BS EN 14582:2007)



End of report



Test Report

Number: SZHH00699671

Applicant: LITTELFUSE, INC
8755 WEST HIGGINS ROAD SUITE
500CHICAGO IL 60631 USA

Date: Jun 19, 2012

Attn: KRISTEEN BACILA/ARSENIO CESISTA JR.

Sample Description:

One (1) submitted sample said to be **white material (alumina insulator)**.



Tests conducted:

As requested by the applicant, refer to attached page(s) for details.

Conclusion:

<u>Tested Samples</u>	<u>Standard</u>	<u>Result</u>
Submitted sample	Restriction of the use of certain hazardous substance in electrical electronic and equipment (RoHS Direction 2002/95/EC and supersedure 2011/65/EU)	Pass

Authorized by:
For Intertek Testing Services
Shenzhen Ltd.




Ben N.L. Lin
General Manager

**Test Report**

Number: SZHH00699671

Tests Conducted

RoHS Chemical Test

(A) Test Result Summary:

Testing Item	Result
Cadmium (Cd) Content (mg/kg)	ND(<2)
Lead (Pb) Content (mg/kg)	ND(<2)
Mercury (Hg) Content (mg/kg)	ND(<2)
Chromium (VI)(Cr ⁶⁺) Content (mg/kg)	ND(<1)
Polybrominated Biphenyls (PBBs)(mg/kg)	
Monobromobiphenyl (MonoBB)	ND(<5)
Dibromobiphenyl (DiBB)	ND(<5)
Tribromobiphenyl (TriBB)	ND(<5)
Tetrabromobiphenyl (TetraBB)	ND(<5)
Pentabromobiphenyl (PentaBB)	ND(<5)
Hexabromobiphenyl (HexaBB)	ND(<5)
Heptabromobiphenyl (HeptaBB)	ND(<5)
Octabromobiphenyl (OctaBB)	ND(<5)
Nonabromobiphenyl (NonaBB)	ND(<5)
Decabromobiphenyl (DecaBB)	ND(<5)
Polybrominated Diphenyl Ethers (PBDEs)(mg/kg)	
Monobromodiphenyl Ether (MonoBDE)	ND(<5)
Dibromodiphenyl Ether (DiBDE)	ND(<5)
Tribromodiphenyl Ether (TriBDE)	ND(<5)
Tetrabromodiphenyl Ether (TetraBDE)	ND(<5)
Pentabromodiphenyl Ether (PentaBDE)	ND(<5)
Hexabromodiphenyl Ether (HexaBDE)	ND(<5)
Heptabromodiphenyl Ether (HeptaBDE)	ND(<5)
Octabromodiphenyl Ether (OctaBDE)	ND(<5)
Nonabromodiphenyl Ether (NonaBDE)	ND(<5)
Decabromodiphenyl Ether (DecaBDE)	ND(<5)

Chemist: Wang Haijun/Zeng Guoliang

mg/kg = milligram per kilogram = ppm

< = Less than

ND = Not detected

Test Report

Number: SZHH00699671

Tests Conducted

(B) RoHS Requirement:

Restricted Substances	Limits
Cadmium (Cd)	0.01% (100 mg/kg)
Lead (Pb)	0.1% (1000 mg/kg)
Mercury (Hg)	0.1% (1000 mg/kg)
Chromium (VI) (Cr ⁶⁺)	0.1% (1000 mg/kg)
Polybrominated Biphenyls (PBBs)	0.1% (1000 mg/kg)
Polybrominated Diphenyl Ethers (PBDEs)	0.1% (1000 mg/kg)

The above limits were quoted from 2002/95/EC and superseded by 2011/65/EU for homogeneous material.

(C) Test Method:

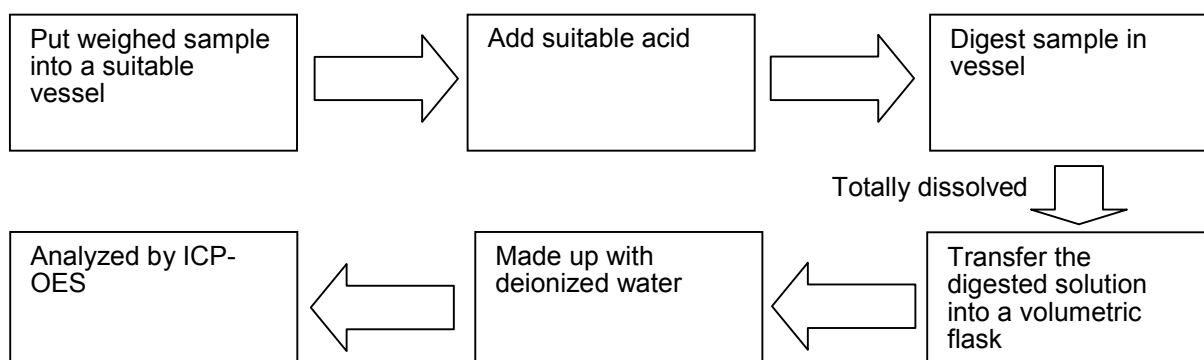
Testing Item	Testing Method	Reporting Limit
Cadmium (Cd) Content	With reference to IEC 62321 Edition 1.0:2008, by acid digestion and determined by ICP - OES	2 mg/kg
Lead (Pb) Content	With reference to IEC 62321 Edition 1.0:2008, by acid digestion and determined by ICP - OES	2 mg/kg
Mercury (Hg) Content	With reference to IEC 62321 Edition 1.0:2008, by acid digestion and determined by ICP - OES	2 mg/kg
Chromium (VI)(Cr ⁶⁺) Content	With reference to IEC 62321 Edition 1.0:2008, by alkaline digestion and determined by UV-VIS Spectrophotometer	1 mg/kg
Polybrominated Biphenyls (PBBs)& Polybrominated Diphenyl Ethers (PBDEs)	With reference to IEC 62321 Edition 1.0:2008, by solvent extraction and determined by GC/MS and further HPLC confirmation when necessary	5 mg/kg

Date sample received: Jun 09, 2012

Testing period: Jun 09, 2012 to Jun 16, 2012

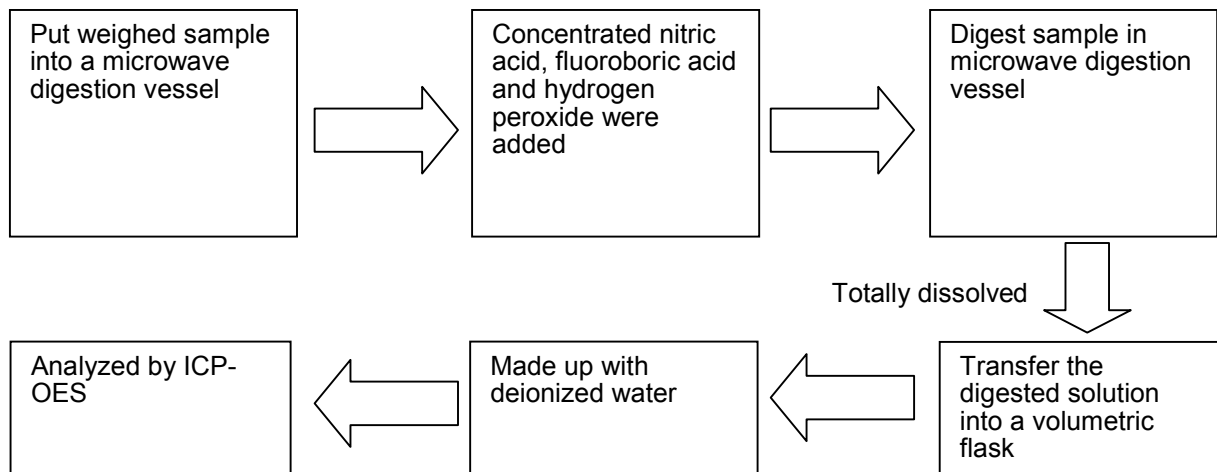
(D) Measurement Flowchart:

1. Test for Cd/Pb Contents

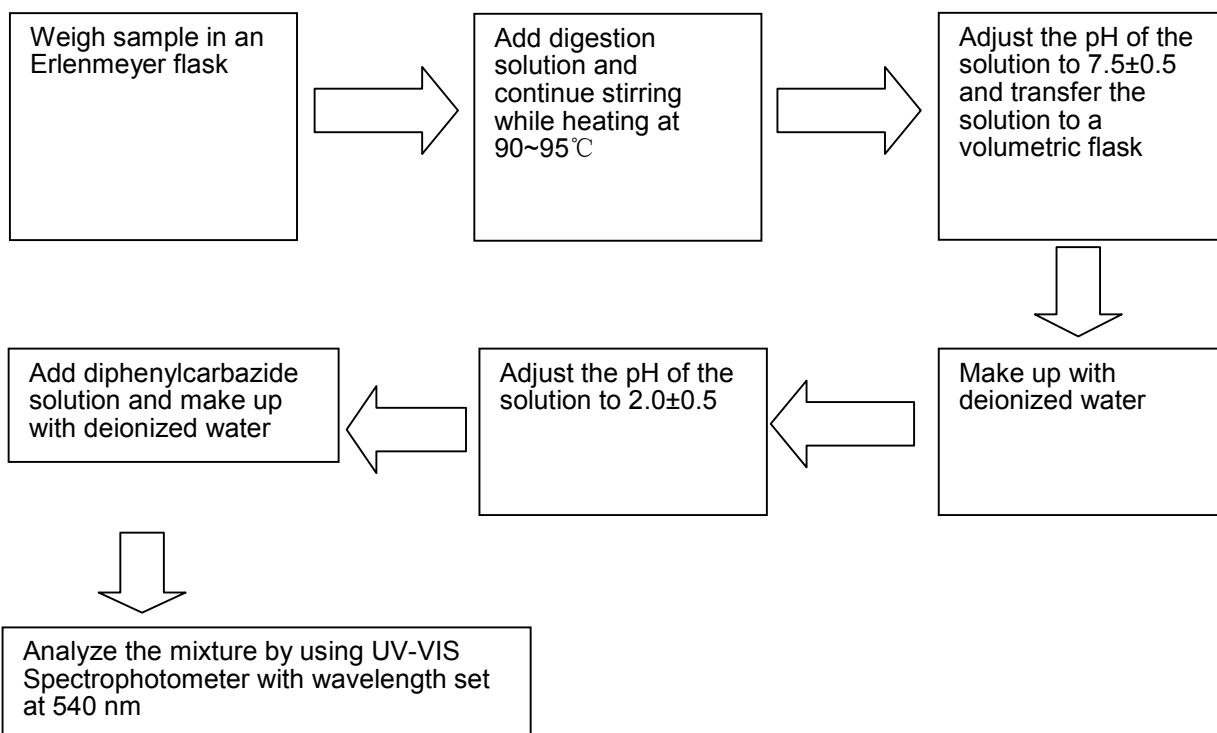


Tests Conducted

2. Test for Hg Content



3. Test for Chromium (VI) (Cr^{6+}) Content (Alkaline Digestion)

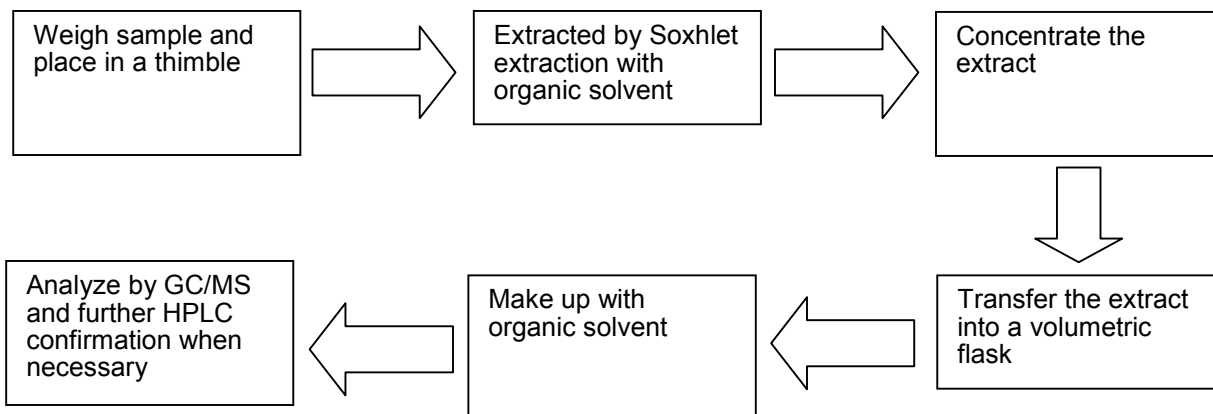


Test Report

Number: SZHH00699671

Tests Conducted

4. Test for PBBs/PBDEs Contents



End of report



Test Report

No. CANEC1200182601

Date: 12 Jan 2012

Page 1 of 5

DONGGUAN DAEJOO ELECTRONIC MATERIALS CO.,LTD.

XIANYONG INDUSTRIAL ZONE, WANJIANG DISTRICT, DONGGUAN CITY, GUANGDONG PROVINCE
CHINA

The following sample(s) was/were submitted and identified on behalf of the clients as : 9544B

SGS Job No. : CP12-000552 - GZ
Date of Sample Received : 09 Jan 2012
Testing Period : 09 Jan 2012 - 12 Jan 2012
Test Requested : Selected test(s) as requested by client.
Test Method : Please refer to next page(s).
Test Results : Please refer to next page(s).

Signed for and on behalf of
SGS-CSTC Ltd.

Merry Lv
Approved Signatory

This document is issued by the Company subject to its General Conditions of Service printed overleaf, available on request or accessible at http://www.sgs.com/terms_and_conditions.htm and for electronic format documents, subject to Terms and Conditions for Electronic Documents at www.sgs.com/terms_e-document.htm. Attention is drawn to the limitation of liability, indemnification and jurisdiction issues defined therein. Any holder of this document is advised that information contained hereon reflects the Company's findings at the time of its inspection only, and within the limits of Client's instructions, if any. The Company's sole responsibility is to its Client and this document does not exonerate parties to a transaction from exercising all their rights and obligations under the transaction documents. This document cannot be reproduced except in full, without prior written approval of the Company. Any unauthorized alteration, forgery or falsification of the content or appearance of this document is unlawful and offenders may be prosecuted to the fullest extent of the law. Unless otherwise stated, the results shown in this test report refer only to the sample(s) tested.



Test Report

No. CANEC1200182601

Date: 12 Jan 2012

Page 2 of 5

Test Results :

Test Part Description :

Specimen No.	SGS Sample ID	Description
1	CAN12-001826.001	Red sheet

Remarks :

- (1) 1 mg/kg = 1 ppm = 0.0001%
- (2) MDL = Method Detection Limit
- (3) ND = Not Detected (< MDL)
- (4) "-" = Not Regulated

Elementary Analysis & Flame Retardants

Test Method : With reference to IEC 62321:2008

- (1) Determination of Cadmium by ICP-OES.
- (2) Determination of Lead by ICP-OES.
- (3) Determination of Mercury by ICP-OES.
- (4) Determination of Hexavalent Chromium by Colorimetric Method using UV-Vis.
- (5) Determination of PBBs / PBDEs content by GC-MS.

Test Item(s)	Unit	MDL	001
Cadmium (Cd)	mg/kg	2	ND
Lead (Pb)	mg/kg	2	ND
Mercury (Hg)	mg/kg	2	ND
Hexavalent Chromium (CrVI)	mg/kg	2	ND
Sum of PBBs	mg/kg	-	ND
Monobromobiphenyl	mg/kg	5	ND
Dibromobiphenyl	mg/kg	5	ND
Tribromobiphenyl	mg/kg	5	ND
Tetrabromobiphenyl	mg/kg	5	ND
Pentabromobiphenyl	mg/kg	5	ND
Hexabromobiphenyl	mg/kg	5	ND
Heptabromobiphenyl	mg/kg	5	ND
Octabromobiphenyl	mg/kg	5	ND
Nonabromobiphenyl	mg/kg	5	ND
Decabromobiphenyl	mg/kg	5	ND
Sum of PBDEs	mg/kg	-	ND
Monobromodiphenyl ether	mg/kg	5	ND

This document is issued by the Company subject to its General Conditions of Service printed overleaf, available on request or accessible at http://www.sgs.com/terms_and_conditions.htm and, for electronic format documents, subject to Terms and Conditions for Electronic Documents at www.sgs.com/terms_e-document.htm. Attention is drawn to the limitation of liability, indemnification and jurisdiction issues defined therein. Any holder of this document is advised that information contained hereon reflects the Company's findings at the time of its inspection only, and within the limits of Client's instructions, if any. The Company's sole responsibility is to its Client and this document does not exonerate parties to a transaction from exercising all their rights and obligations under the transaction documents. This document cannot be reproduced except in full, without prior written approval of the Company. Any unauthorized alteration, forgery or falsification of the content or appearance of this document is unlawful and offenders may be prosecuted to the fullest extent of the law. Unless otherwise stated, the results shown in this test report refer only to the sample(s) tested.



Test Report

No. CANEC1200182601

Date: 12 Jan 2012

Page 3 of 5

Test Item(s)	Unit	MDL	001
Dibromodiphenyl ether	mg/kg	5	ND
Tribromodiphenyl ether	mg/kg	5	ND
Tetrabromodiphenyl ether	mg/kg	5	ND
Pentabromodiphenyl ether	mg/kg	5	ND
Hexabromodiphenyl ether	mg/kg	5	ND
Heptabromodiphenyl ether	mg/kg	5	ND
Octabromodiphenyl ether	mg/kg	5	ND
Nonabromodiphenyl ether	mg/kg	5	ND
Decabromodiphenyl ether	mg/kg	5	ND

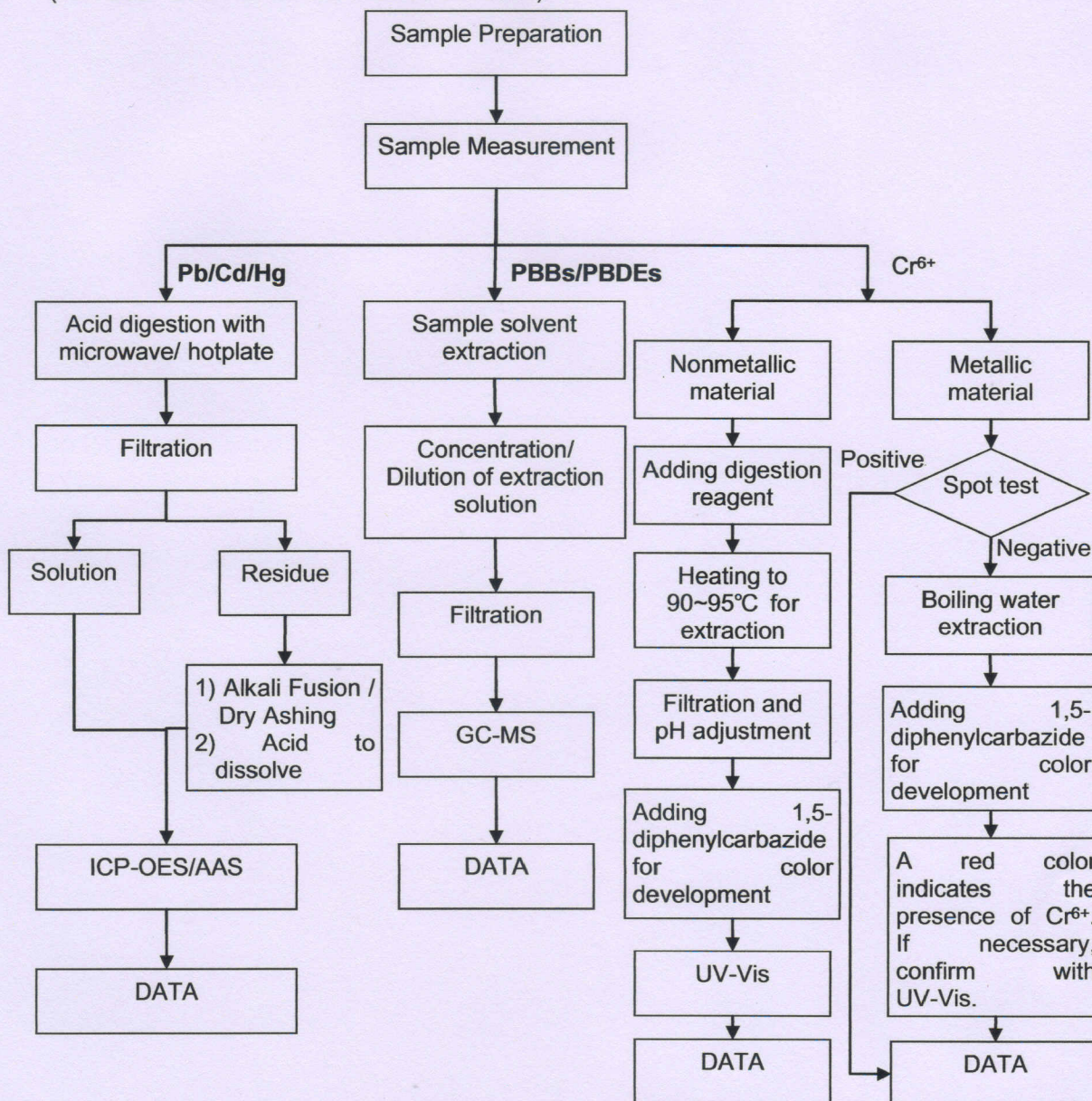
This document is issued by the Company subject to its General Conditions of Service printed overleaf, available on request or accessible at http://www.sgs.com/terms_and_conditions.htm and, for electronic format documents, subject to Terms and Conditions for Electronic Documents at www.sgs.com/terms_e-document.htm. Attention is drawn to the limitation of liability, indemnification and jurisdiction issues defined therein. Any holder of this document is advised that information contained hereon reflects the Company's findings at the time of its inspection only and within the limits of Client's instructions, if any. The Company's sole responsibility is to its Client and this document does not exonerate parties to a transaction from exercising all their rights and obligations under the transaction documents. This document cannot be reproduced except in full, without prior written approval of the Company. Any unauthorized alteration, forgery or falsification of the content or appearance of this document is unlawful and offenders may be prosecuted to the fullest extent of the law. Unless otherwise stated, the results shown in this test report refer only to the sample(s) tested.



ATTACHMENTS

RoHS Testing Flow Chart

- 1) Name of the person who made testing: Bella Wang / Cutey Yu / Ross Zhan
- 2) Name of the person in charge of testing: Adams Yu / Ryan Yang
- 3) These samples were dissolved totally by pre-conditioning method according to below flow chart (Cr⁶⁺ and PBBs/PBDEs test method excluded).



This document is issued by the Company subject to its General Conditions of Service printed overleaf, available on request or accessible at http://www.sgs.com/terms_and_conditions.htm and, for electronic format documents, subject to Terms and Conditions for Electronic Documents at www.sgs.com/terms_e-document.htm. Attention is drawn to the limitation of liability, indemnification and jurisdiction issues defined therein. Any holder of this document is advised that information contained hereon reflects the Company's findings at the time of its inspection only, and within the limits of Client's instructions, if any. The Company's sole responsibility is to its Client and this document does not exonerate parties to a transaction from exercising all their rights and obligations under the transaction documents. This document cannot be reproduced except in full, without prior written approval of the Company. Any unauthorized alteration, forgery or falsification of the content or appearance of this document is unlawful and offenders may be prosecuted to the fullest extent of the law. Unless otherwise stated, the results shown in this test report refer only to the sample(s) tested.