



ICP Test Report Certification Packet

Company Name: Littelfuse, Inc.

Product Type: Surface Mount Varistors

Product Series: CH Series RoHS Compliant Models

Issue Date: June 4, 2010

It is hereby certified by Littelfuse, Inc. that there is neither RoHS (EU Directive 2002/95/EC)-restricted substance nor such use, for materials to be used for unit parts, for packing/packaging materials, and for additives and the like in the manufacturing processes.

And it is certified by Littelfuse, Inc. that the series products listed above are compliant with LF Halogen Free Standard ($Cl \leq 800\text{ppm}$, $Br \leq 800\text{ppm}$, $Cl+Br \leq 1000\text{ppm}$).

In addition, it is hereby reported to you that the parts and sub-materials, the materials to be used for unit parts, the additives and the like in the manufacturing processes, are all composed of the following components.

Issued by: *David Huang*

<DGLF Environmental, Health & Safety Engineer >

(1) Parts, sub-materials and unit parts

This document covers CH Series RoHS compliant models manufactured by Littelfuse, Inc.

Please see Table 1 for raw materials used.

(2) The ICP data on all measurable substances

Please see appropriate pages as identified in Table 1.

Remarks :

Pb (lead) contained in glass of electronic components and is categorized as exempt under section 5 of the RoHS Annex.



Table 1: List of Raw Materials covered by this report

Total Parts	P/N	Raw Material Description	Page
1	N/A	BLACK CHIP CH	3-7
2	N/A	SILVER PASTE SP-A6PL	8-12
3	MS208	TERMINATIONS	13-19
4	MS202	BLUE SILICONE	20-26



TEST REPORT

NUMBER: SZHH0048754803

APPLICANT: LITTELFUSE, INC.
8755 WEST HIGGINS ROAD SUITE 500
CHICAGO IL 60631 USA

DATE: May 20, 2010

ATTN: KRISTEEN BACILA/ARSENIO CESISTA JR.

SAMPLE DESCRIPTION:

ONE (1) SUBMITTED SAMPLE SAID TO BE **BLACK CHIP CH.**
TESTED COMPONENT : BLACK MATERIAL.
PART DESCRIPTION : BLACK CHIP CH.
DATE SAMPLE RECEIVED : MAY 17, 2010.
DATE TEST STARTED : MAY 17, 2010.



TESTS CONDUCTED:

AS REQUESTED BY THE APPLICANT, FOR DETAILS REFER TO ATTACHED PAGE(S)

AUTHORIZED BY:
FOR INTERTEK TESTING SERVICES
SHENZHEN LTD.



KARBON M.Y. WU
GENERAL MANAGER

**TEST REPORT**

NUMBER: SZHH0048754803

TESTS CONDUCTED

RoHS CHEMICAL TEST

(A) TEST RESULT SUMMARY:

TESTING ITEM	RESULT
CADMIUM (Cd) CONTENT (mg/kg)	ND (<2)
LEAD (Pb) CONTENT (mg/kg)	ND (<2)
MERCURY (Hg) CONTENT (mg/kg)	ND (<2)
CHROMIUM (VI)(Cr ⁶⁺) CONTENT (mg/kg)	ND (<1)
POLYBROMINATED BIPHENYLS (PBBs) (mg/kg)	
MONOBROMOBIPHENYL (MonoBB)	ND (<5)
DIBROMOBIPHENYL (DiBB)	ND (<5)
TRIBROMOBIPHENYL (TriBB)	ND (<5)
TETRABROMOBIPHENYL (TetraBB)	ND (<5)
PENTABROMOBIPHENYL (PentaBB)	ND (<5)
HEXABROMOBIPHENYL (HexaBB)	ND (<5)
HEPTABROMOBIPHENYL (HeptaBB)	ND (<5)
OCTABROMOBIPHENYL (OctaBB)	ND (<5)
NONABROMOBIPHENYL (NonaBB)	ND (<5)
DECABROMOBIPHENYL (DecaBB)	ND (<5)
POLYBROMINATED DIPHENYL ETHERS (PBDEs) (mg/kg)	
MONOBROMODIPHENYL ETHER (MonoBDE)	ND (<5)
DIBROMODIPHENYL ETHER (DiBDE)	ND (<5)
TRIBROMODIPHENYL ETHER (TriBDE)	ND (<5)
TETRABROMODIPHENYL ETHER (TetraBDE)	ND (<5)
PENTABROMODIPHENYL ETHER (PentaBDE)	ND (<5)
HEXABROMODIPHENYL ETHER (HexaBDE)	ND (<5)
HEPTABROMODIPHENYL ETHER (HeptaBDE)	ND (<5)
OCTABROMODIPHENYL ETHER (OctaBDE)	ND (<5)
NONABROMODIPHENYL ETHER (NonaBDE)	ND (<5)
DECABROMODIPHENYL ETHER (DecaBDE)	ND (<5)

CHEMIST: LV LINNA

mg/kg = MILLIGRAM PER KILOGRAM = ppm

< = LESS THAN

ND = NOT DETECTED

**TEST REPORT**

NUMBER: SZHH0048754803

TESTS CONDUCTED

(B) RoHS REQUIREMENT:

RESTRICTED SUBSTANCES	LIMITS
CADMIUM (Cd)	0.01% (100 ppm)
LEAD (Pb)	0.1% (1000 ppm)
MERCURY (Hg)	0.1% (1000 ppm)
CHROMIUM (VI) (Cr ⁶⁺)	0.1% (1000 ppm)
POLYBROMINATED BIPHENYLS (PBBs)	0.1% (1000 ppm)
POLYBROMINATED DIPHENYL ETHERS (PBDEs)	0.1% (1000 ppm)

THE ABOVE LIMITS WERE QUOTED FROM 2002/95/EC AND AMENDMENT 2005/618/EC FOR HOMOGENEOUS MATERIAL.

(C) TEST METHOD:

TESTING ITEM	TESTING METHOD	REPORTING LIMIT
CADMIUM (Cd) CONTENT	WITH REFERENCE TO IEC 62321 EDITION 1.0:2008, BY ACID DIGESTION AND DETERMINED BY ICP - OES	2 mg/kg
LEAD (Pb) CONTENT	WITH REFERENCE TO IEC 62321 EDITION 1.0:2008, BY ACID DIGESTION AND DETERMINED BY ICP - OES	2 mg/kg
MERCURY (Hg) CONTENT	WITH REFERENCE TO IEC 62321 EDITION 1.0:2008, BY ACID DIGESTION AND DETERMINED BY ICP - OES	2 mg/kg
CHROMIUM (VI) (Cr ⁶⁺) CONTENT	WITH REFERENCE TO IEC 62321 EDITION 1.0:2008, BY ALKALINE DIGESTION AND DETERMINED BY UV-VIS SPECTROPHOTOMETER	1 mg/kg
POLYBROMINATED BIPHENYLS (PBBs) & POLYBROMINATED DIPHENYL ETHERS (PBDEs)	WITH REFERENCE TO IEC 62321 EDITION 1.0:2008, BY SOLVENT EXTRACTION AND DETERMINED BY GC/MS AND FURTHER HPLC CONFIRMATION WHEN NECESSARY	5 mg/kg

DATE SAMPLE RECEIVED : MAY 17, 2010

TESTING PERIOD : MAY 17, 2010 TO MAY 19, 2010

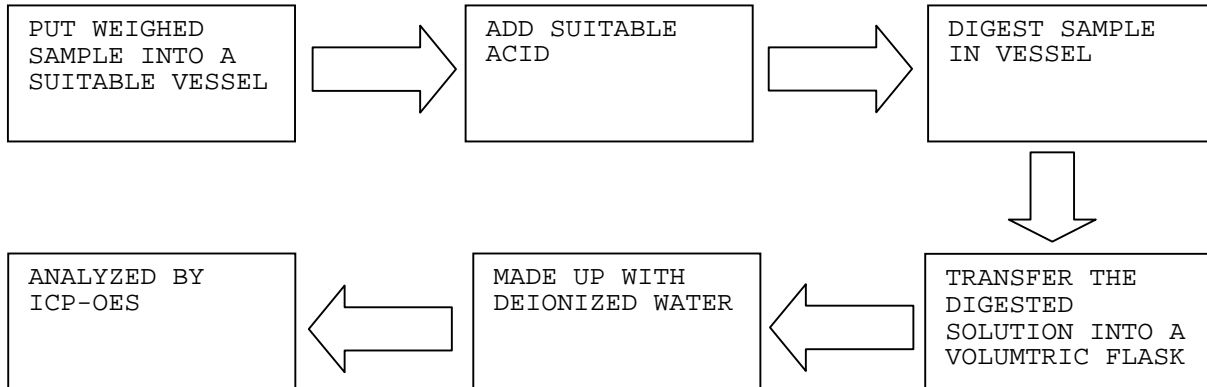
TEST REPORT

NUMBER: SZHH0048754803

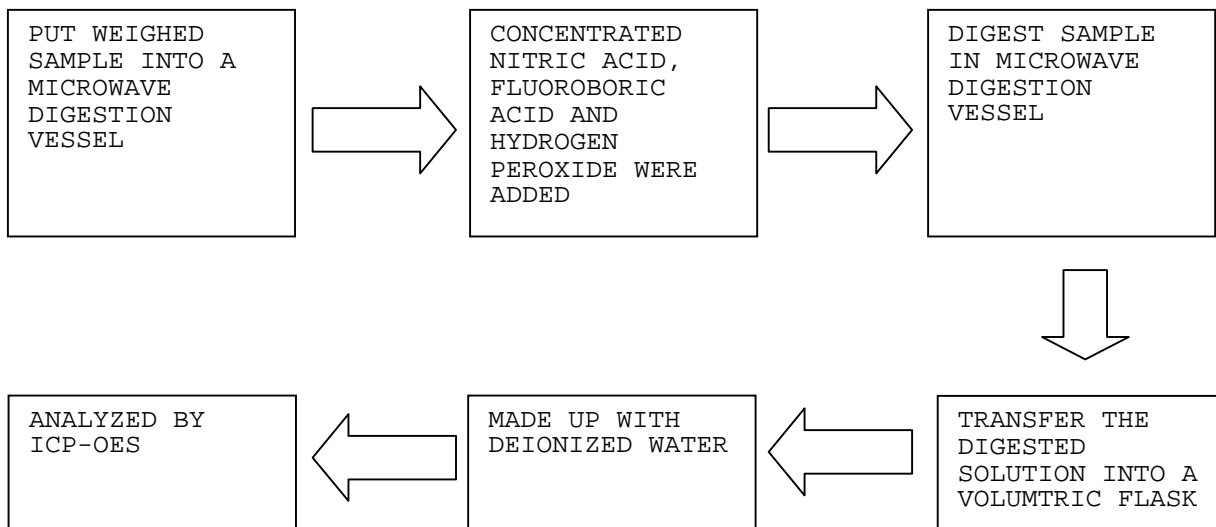
TESTS CONDUCTED

(D) MEASUREMENT FLOWCHART:

1. TEST FOR Cd/Pb CONTENTS



2. TEST FOR Hg CONTENT

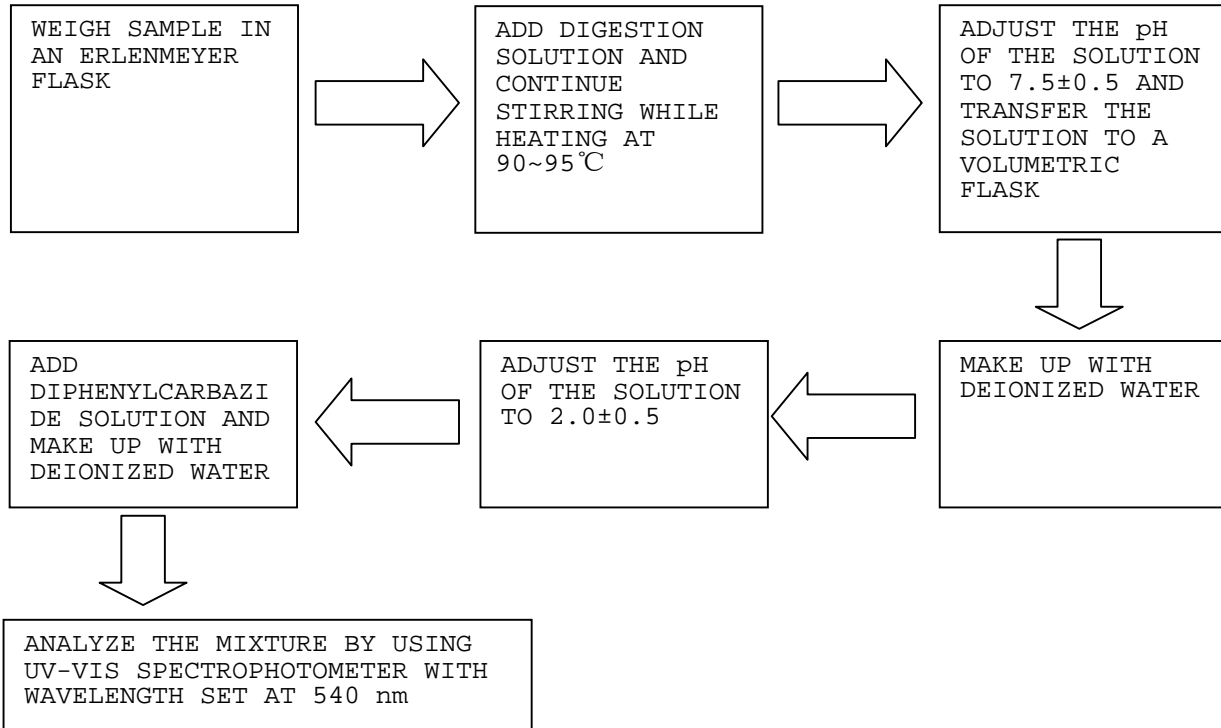


TEST REPORT

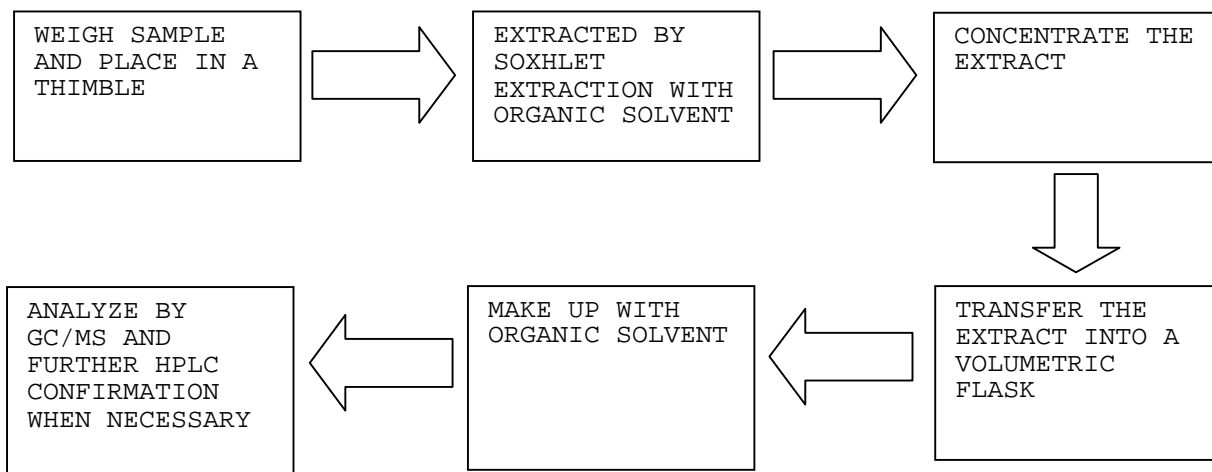
NUMBER: SZHH0048754803

TESTS CONDUCTED

3. TEST FOR CHROMIUM (VI) (Cr^{6+}) CONTENT (ALKALINE DIGESTION)



4. TEST FOR PBBs/PBDEs CONTENTS



END OF REPORT

測試報告 Test Report

號碼(No.) : CE/2010/54365 日期(Date) : 2010/05/26 頁數(Page) : 1 of 5

新日本化金株式會社

SHIN-NIHON KAKIN CO., LTD.

東京都板橋區宮本町33番7號

33-7, MIYAMOTO-CHO, ITABASHI-KU, TOKYO, JAPAN



以下測試樣品係由客戶送樣，且由客戶聲稱並經客戶確認如下 (The following samples was/were submitted and identified by/on behalf of the client as):

樣品名稱(Sample Description)	: 銀膏 (SILVER PASTE)
樣品型號(Style/Item No.)	: SP-A6PL
材料批號(Lot No.)	: 00422
收件日期(Sample Receiving Date)	: 2010/05/21
測試期間(Testing Period)	: 2010/05/21 TO 2010/05/26

=====
測試結果(Test Results) : 請見下一頁 (Please refer to next pages).

Chenyu Kung / Operation Manager
Signed for and on behalf of
SGS TAIWAN LTD.
Chemical Laboratory – Taipei

Unless otherwise stated the results shown in this test report refer only to the sample(s) tested. This test report cannot be reproduced, except in full, without prior written permission of the Company.
除非另有說明，此報告結果僅對測試之樣品負責。本報告未經本公司書面許可，不可部分複製。
This Test Report is issued by the Company under its General Conditions of Service printed overleaf or available on request and accessible at http://www.sgs.com/terms_and_conditions.htm. Attention is drawn to the limitation of liability, indemnification and jurisdiction issues defined therein. Any holder of this Test Report is advised that information contained hereon reflects the Company's findings at the time of its intervention only and within the limits of Client's instructions, if any. The Company's sole responsibility is to its Client and this document does not exonerate parties to a transaction from exercising all their rights and obligations under the transaction documents. Any unauthorized alteration, forgery or falsification of the content or appearance of this document is unlawful and offenders may be prosecuted to the fullest extent of the law.

測試報告 Test Report

號碼(No.) : CE/2010/54365 日期(Date) : 2010/05/26 頁數(Page) : 2 of 5

新日本化金株式會社

SHIN-NIHON KAKIN CO., LTD.

東京都板橋區宮本町33番7號

33-7, MIYAMOTO-CHO, ITABASHI-KU, TOKYO, JAPAN



測試結果(Test Results)

測試部位(PARTNAME)NO.1 : 灰色膏狀 (GRAY PASTE)

測試項目 (Test Items)	單位 (Unit)	測試方法 (Method)	方法偵測 極限值 (MDL)	結果 (Result) NO.1
鎘 / Cadmium (Cd)	mg/kg	參考IEC 62321: 2008方法, 以感應耦合電漿原子發射光譜儀檢測. / With reference to IEC 62321: 2008 and performed by ICP-AES.	2	n.d.
鉛 / Lead (Pb)	mg/kg	參考IEC 62321: 2008方法, 以感應耦合電漿原子發射光譜儀檢測. / With reference to IEC 62321: 2008 and performed by ICP-AES.	2	n.d.
汞 / Mercury (Hg)	mg/kg	參考IEC 62321: 2008方法, 以感應耦合電漿原子發射光譜儀檢測. / With reference to IEC 62321: 2008 and performed by ICP-AES.	2	n.d.
六價鉻 / Hexavalent Chromium Cr(VI) by alkaline extraction	mg/kg	參考IEC 62321: 2008方法, 以UV-VIS檢測. / With reference to IEC 62321: 2008 and performed by UV-VIS.	2	n.d.
鹵素 / Halogen				
鹵素 (氟) / Halogen-Fluorine (F) (CAS No.: 014762-94-8)	mg/kg	參考BS EN 14582:2007, 以離子層析儀分析. / With reference to BS EN 14582:2007. Analysis was performed by IC.	50	n.d.
鹵素 (氯) / Halogen-Chlorine (Cl) (CAS No.: 022537-15-1)			50	n.d.
鹵素 (溴) / Halogen-Bromine (Br) (CAS No.: 010097-32-2)			50	n.d.
鹵素 (碘) / Halogen-Iodine (I) (CAS No.: 014362-44-8)			50	n.d.

備註(Note) :

1. mg/kg = ppm ; 0.1wt% = 1000ppm
2. n.d. = Not Detected (未檢出)
3. MDL = Method Detection Limit (方法偵測極限值)

Unless otherwise stated the results shown in this test report refer only to the sample(s) tested. This test report cannot be reproduced, except in full, without prior written permission of the Company. 除非另有說明, 此報告結果僅對測試之樣品負責。本報告未經本公司書面許可, 不可部分複製。

This Test Report is issued by the Company under its General Conditions of Service printed overleaf or available on request and accessible at http://www.sgs.com/terms_and_conditions.htm. Attention is drawn to the limitation of liability, indemnification and jurisdiction issues defined therein. Any holder of this Test Report is advised that information contained hereon reflects the Company's findings at the time of its intervention only and within the limits of Client's instructions, if any. The Company's sole responsibility is to its Client and this document does not exonerate parties to a transaction from exercising all their rights and obligations under the transaction documents. Any unauthorized alteration, forgery or falsification of the content or appearance of this document is unlawful and offenders may be prosecuted to the fullest extent of the law.

測試報告 Test Report

號碼(No.) : CE/2010/54365 日期(Date) : 2010/05/26 頁數(Page) : 3 of 5

新日本化金株式會社

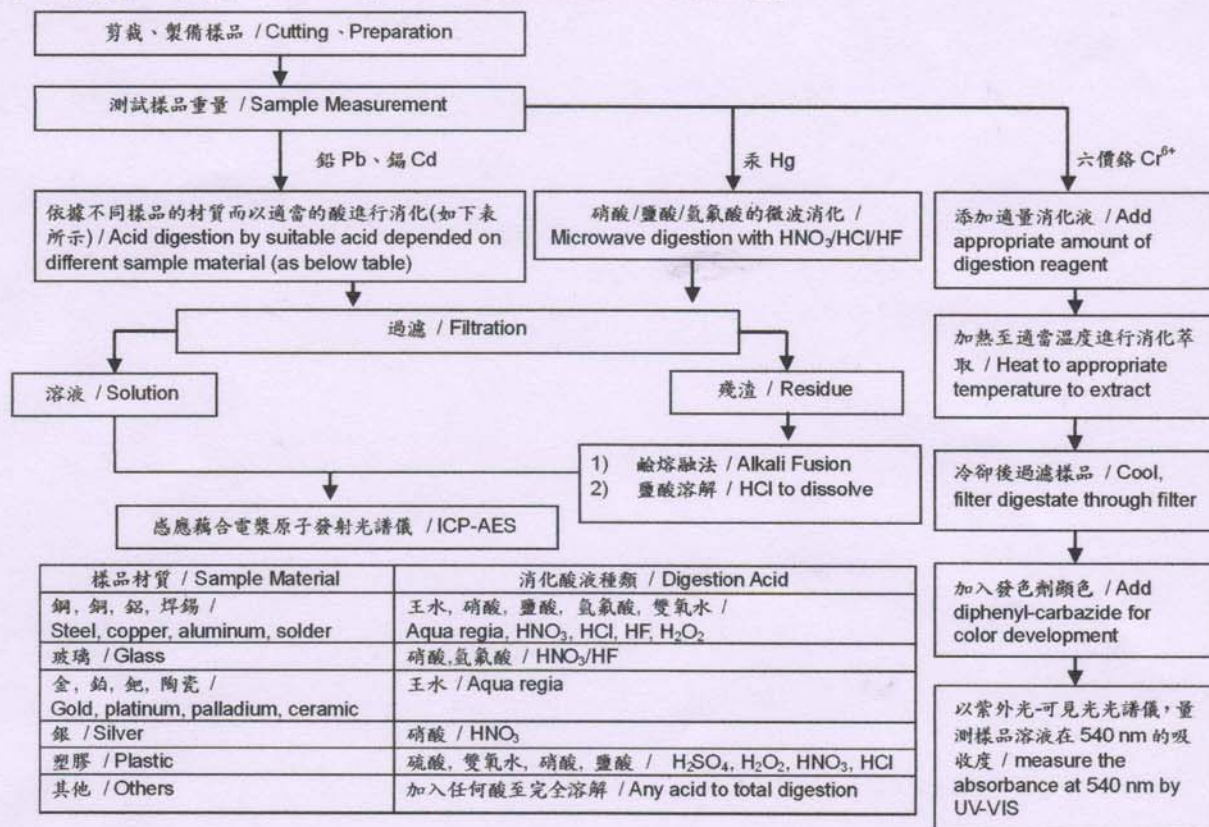
SHIN-NIHON KAKIN CO., LTD.

東京都板橋區宮本町33番7號

33-7, MIYAMOTO-CHO, ITABASHI-KU, TOKYO, JAPAN



- 1) 根據以下的流程圖之條件，樣品已完全溶解。(六價鉻測試方法除外) / These samples were dissolved totally by pre-conditioning method according to below flow chart. (Cr⁶⁺ test method excluded)
- 2) 測試人員：楊登偉 / Name of the person who made measurement: Climbgreat Yang
- 3) 測試負責人：張啓興 / Name of the person in charge of measurement: Troy Chang



Unless otherwise stated the results shown in this test report refer only to the sample(s) tested. This test report cannot be reproduced, except in full, without prior written permission of the Company.
 除非另有說明，此報告結果僅對測試之樣品負責。本報告未經本公司書面許可，不可部分複製。
 This Test Report is issued by the Company under its General Conditions of Service printed overleaf or available on request and accessible at http://www.sgs.com/terms_and_conditions.htm. Attention is drawn to the limitation of liability, indemnification and jurisdiction issues defined therein. Any holder of this Test Report is advised that information contained hereon reflects the Company's findings at the time of its intervention only and within the limits of Client's instructions, if any. The Company's sole responsibility is to its Client and this document does not exonerate parties to a transaction from exercising all their rights and obligations under the transaction documents. Any unauthorized alteration, forgery or falsification of the content or appearance of this document is unlawful and offenders may be prosecuted to the fullest extent of the law.

測試報告 Test Report

號碼(No.) : CE/2010/54365 日期(Date) : 2010/05/26 頁數(Page) : 4 of 5

新日本化金株式會社

SHIN-NIHON KAKIN CO., LTD.

東京都板橋區宮本町33番7號

33-7, MIYAMOTO-CHO, ITABASHI-KU, TOKYO, JAPAN



鹵素分析流程圖 / Analytical flow chart of halogen content

- 1) 測試人員：陳恩臻 / Name of the person who made measurement: Rita Chen
- 2) 測試負責人：張啓興 / Name of the person in charge of measurement: Troy Chang



Unless otherwise stated the results shown in this test report refer only to the sample(s) tested. This test report cannot be reproduced, except in full, without prior written permission of the Company.
 除非另有說明，此報告結果僅對測試之樣品負責。本報告未經本公司書面許可，不可部分複製。
 This Test Report is issued by the Company under its General Conditions of Service printed overleaf or available on request and accessible at http://www.sgs.com/terms_and_conditions.htm. Attention is drawn to the limitation of liability, indemnification and jurisdiction issues defined therein. Any holder of this Test Report is advised that information contained hereon reflects the Company's findings at the time of its intervention only and within the limits of Client's instructions, if any. The Company's sole responsibility is to its Client and this document does not exonerate parties to a transaction from exercising all their rights and obligations under the transaction documents. Any unauthorized alteration, forgery or falsification of the content or appearance of this document is unlawful and offenders may be prosecuted to the fullest extent of the law.

測試報告 Test Report

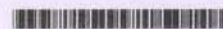
號碼(No.) : CE/2010/54365 日期(Date) : 2010/05/26 頁數(Page) : 5 of 5

新日本化金株式會社

SHIN-NIHON KAKIN CO., LTD.

東京都板橋區宮本町33番7號

33-7, MIYAMOTO-CHO, ITABASHI-KU, TOKYO, JAPAN



** 報告結尾 (End of Report) **

Unless otherwise stated the results shown in this test report refer only to the sample(s) tested. This test report cannot be reproduced, except in full, without prior written permission of the Company.
除非另有說明，此報告結果僅對測試之樣品負責。本報告未經本公司書面許可，不可部分複製。

This Test Report is issued by the Company under its General Conditions of Service printed overleaf or available on request and accessible at http://www.sgs.com/terms_and_conditions.htm. Attention is drawn to the limitation of liability, indemnification and jurisdiction issues defined therein. Any holder of this Test Report is advised that information contained hereon reflects the Company's findings at the time of its intervention only and within the limits of Client's instructions, if any. The Company's sole responsibility is to its Client and this document does not exonerate parties to a transaction from exercising all their rights and obligations under the transaction documents. Any unauthorized alteration, forgery or falsification of the content or appearance of this document is unlawful and offenders may be prosecuted to the fullest extent of the law.



TEST REPORT

NUMBER: SZHH0048757801

APPLICANT: LITTELFUSE, INC.
8755 WEST HIGGINS ROAD SUITE 500
CHICAGO IL 60631 USA

DATE: May 21, 2010

ATTN: KRISTEEN BACILA/ARSENIO CESISTA JR.

SAMPLE DESCRIPTION:

ONE (1) SUBMITTED SAMPLE SAID TO BE **LIGHT GREY PASTE.**

PART DESCRIPTION : TERMINATIONS.
PART NUMBER : MS208.
DATE SAMPLE RECEIVED : MAY 17, 2010.
DATE TEST STARTED : MAY 17, 2010.



TESTS CONDUCTED:

AS REQUESTED BY THE APPLICANT, FOR DETAILS REFER TO ATTACHED PAGE(S)

AUTHORIZED BY:
FOR INTERTEK TESTING SERVICES
SHENZHEN LTD.



KARBON M.Y. WU
GENERAL MANAGER

**TEST REPORT**

NUMBER: SZHH0048757801

TESTS CONDUCTED

1 RoHS CHEMICAL TEST

(A) TEST RESULT SUMMARY:

TESTING ITEM	RESULT
CADMIUM (Cd) CONTENT (mg/kg)	ND (<2)
LEAD (Pb) CONTENT (mg/kg)	2070
MERCURY (Hg) CONTENT (mg/kg)	ND (<2)
CHROMIUM (VI)(Cr ⁶⁺) CONTENT (mg/kg)	ND (<1)
POLYBROMINATED BIPHENYLS (PBBs) (mg/kg)	
MONOBROMOBIPHENYL (MonoBB)	ND (<5)
DIBROMOBIPHENYL (DiBB)	ND (<5)
TRIBROMOBIPHENYL (TriBB)	ND (<5)
TETRABROMOBIPHENYL (TetraBB)	ND (<5)
PENTABROMOBIPHENYL (PentaBB)	ND (<5)
HEXABROMOBIPHENYL (HexaBB)	ND (<5)
HEPTABROMOBIPHENYL (HeptaBB)	ND (<5)
OCTABROMOBIPHENYL (OctaBB)	ND (<5)
NONABROMOBIPHENYL (NonaBB)	ND (<5)
DECABROMOBIPHENYL (DecaBB)	ND (<5)
POLYBROMINATED DIPHENYL ETHERS (PBDEs) (mg/kg)	
MONOBROMODIPHENYL ETHER (MonoBDE)	ND (<5)
DIBROMODIPHENYL ETHER (DiBDE)	ND (<5)
TRIBROMODIPHENYL ETHER (TriBDE)	ND (<5)
TETRABROMODIPHENYL ETHER (TetraBDE)	ND (<5)
PENTABROMODIPHENYL ETHER (PentaBDE)	ND (<5)
HEXABROMODIPHENYL ETHER (HexaBDE)	ND (<5)
HEPTABROMODIPHENYL ETHER (HeptaBDE)	ND (<5)
OCTABROMODIPHENYL ETHER (OctaBDE)	ND (<5)
NONABROMODIPHENYL ETHER (NonaBDE)	ND (<5)
DECABROMODIPHENYL ETHER (DecaBDE)	ND (<5)

CHEMIST: LV LINNA

mg/kg = MILLIGRAM PER KILOGRAM BASED ON DRY WEIGHT OF SAMPLE = ppm

< = LESS THAN

ND = NOT DETECTED

TEST REPORT

NUMBER: SZHH0048757801

TESTS CONDUCTED

(B) RoHS REQUIREMENT:

RESTRICTED SUBSTANCES	LIMITS
CADMIUM (Cd)	0.01% (100 ppm)
LEAD (Pb)	0.1% (1000 ppm)
MERCURY (Hg)	0.1% (1000 ppm)
CHROMIUM (VI) (Cr ⁶⁺)	0.1% (1000 ppm)
POLYBROMINATED BIPHENYLS (PBBs)	0.1% (1000 ppm)
POLYBROMINATED DIPHENYL ETHERS (PBDEs)	0.1% (1000 ppm)

THE ABOVE LIMITS WERE QUOTED FROM 2002/95/EC AND AMENDMENT 2005/618/EC FOR HOMOGENEOUS MATERIAL.

(C) TEST METHOD:

TESTING ITEM	TESTING METHOD	REPORTING LIMIT
CADMIUM (Cd) CONTENT	WITH REFERENCE TO IEC 62321 EDITION 1.0:2008, BY ACID DIGESTION AND DETERMINED BY ICP - OES	2 mg/kg
LEAD (Pb) CONTENT	WITH REFERENCE TO IEC 62321 EDITION 1.0:2008, BY ACID DIGESTION AND DETERMINED BY ICP - OES	2 mg/kg
MERCURY (Hg) CONTENT	WITH REFERENCE TO IEC 62321 EDITION 1.0:2008, BY ACID DIGESTION AND DETERMINED BY ICP - OES	2 mg/kg
CHROMIUM (VI) (Cr ⁶⁺) CONTENT	WITH REFERENCE TO IEC 62321 EDITION 1.0:2008, BY ALKALINE DIGESTION AND DETERMINED BY UV-VIS SPECTROPHOTOMETER	1 mg/kg
POLYBROMINATED BIPHENYLS (PBBs) & POLYBROMINATED DIPHENYL ETHERS (PBDEs)	WITH REFERENCE TO IEC 62321 EDITION 1.0:2008, BY SOLVENT EXTRACTION AND DETERMINED BY GC/MS AND FURTHER HPLC CONFIRMATION WHEN NECESSARY	5 mg/kg

DATE SAMPLE RECEIVED : MAY 17, 2010

TESTING PERIOD : MAY 17, 2010 TO MAY 20, 2010

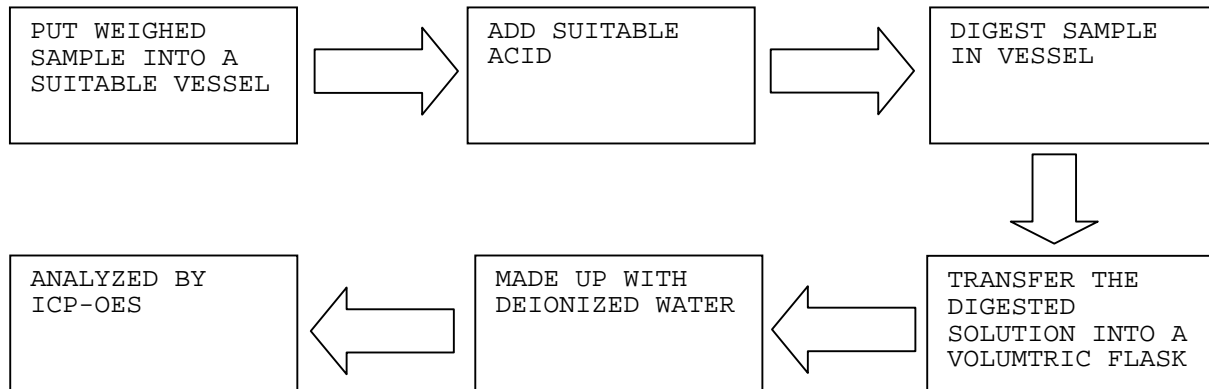
TEST REPORT

NUMBER: SZHH0048757801

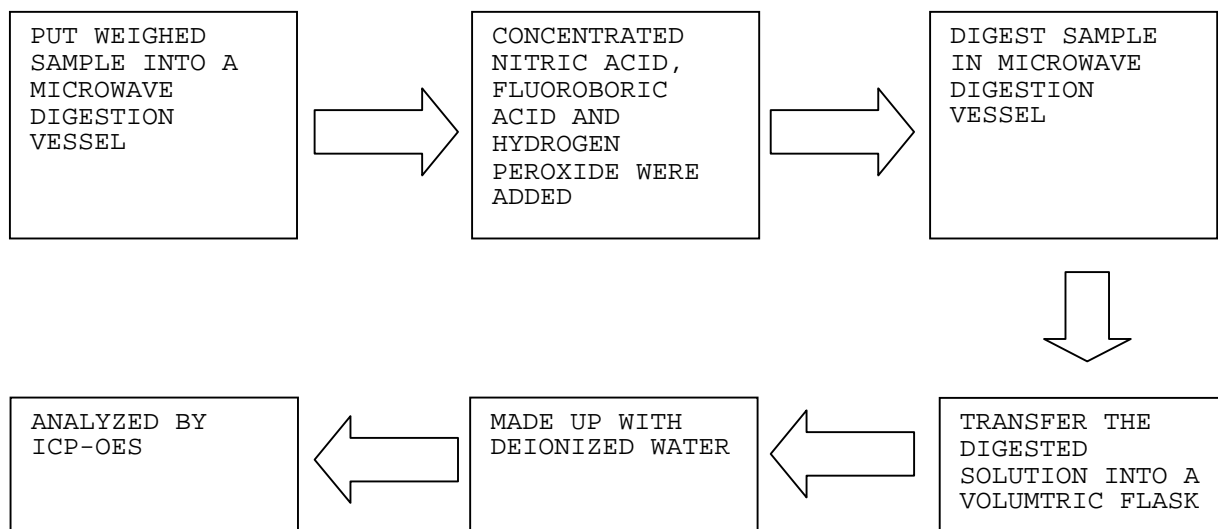
TESTS CONDUCTED

(D) MEASUREMENT FLOWCHART:

1. TEST FOR Cd/Pb CONTENTS



2. TEST FOR Hg CONTENT

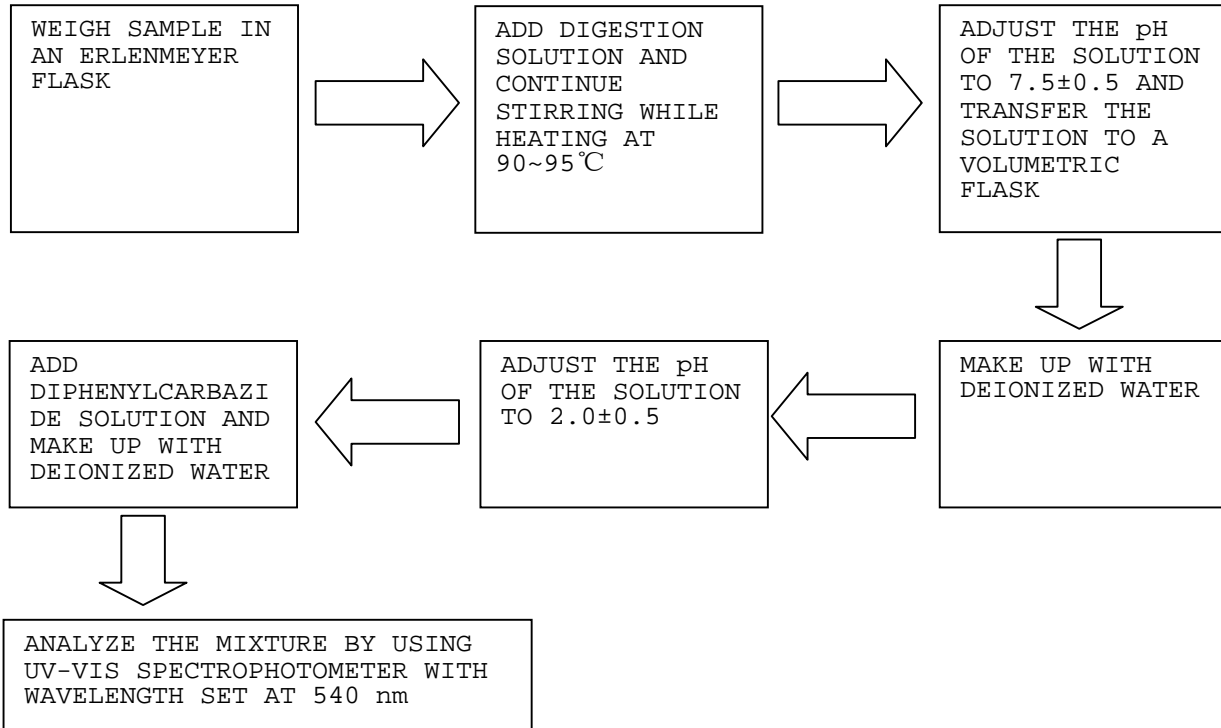


TEST REPORT

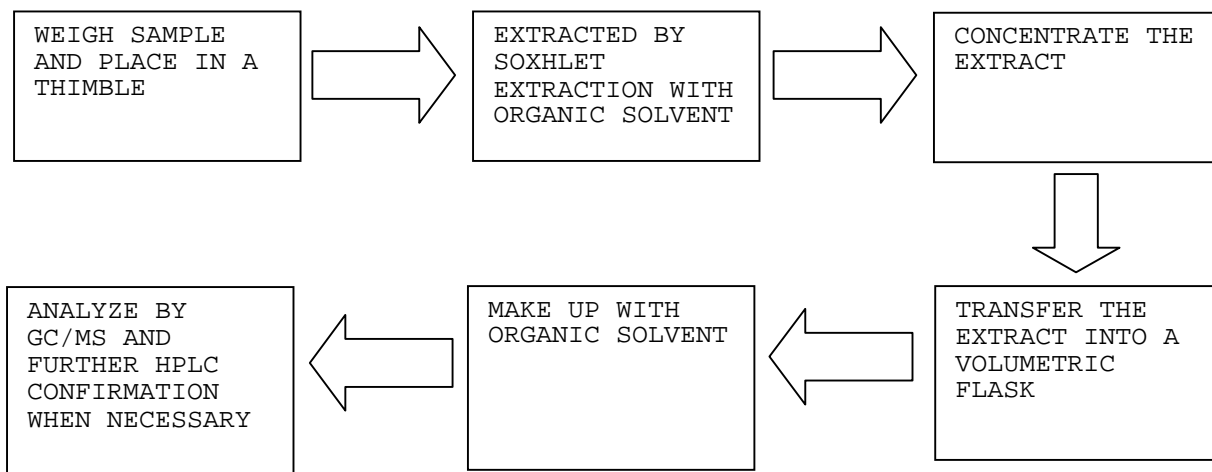
NUMBER: SZHH0048757801

TESTS CONDUCTED

3. TEST FOR CHROMIUM (VI) (Cr^{6+}) CONTENT (ALKALINE DIGESTION)



4. TEST FOR PBBs/PBDEs CONTENTS



**TEST REPORT**

NUMBER: SZHH0048757801

TESTS CONDUCTED

2 (I) TEST RESULT SUMMARY :

HALOGEN CONTENT :

<u>TESTING ITEM</u>	<u>RESULT (ppm)</u>
FLUORINE (F) CONTENT	ND
CHLORINE (Cl) CONTENT	ND
BROMINE (Br) CONTENT	ND
IODINE (I) CONTENT	ND

REMARKS : ppm = PARTS PER MILLION BASED ON DRY WEIGHT OF SAMPLE
ND = NOT DETECTED

(II) TEST METHOD :

<u>TESTING ITEM</u>	<u>TESTING METHOD</u>	<u>REPORTING LIMIT</u>
HALOGEN (F, Cl, Br, I) CONTENT	WITH REFERENCE TO BS EN 14582:2007 BY CALORIMETRIC BOMB AND DETERMINED BY ION CHROMATOGRAPHY	50 ppm

REMARK : REPORTING LIMIT = QUANTITATION LIMIT OF ANALYTE IN SAMPLE

DATE SAMPLE RECEIVED : MAY 17, 2010

TESTING PERIOD : MAY 17, 2010 TO MAY 20, 2010

TEST REPORT

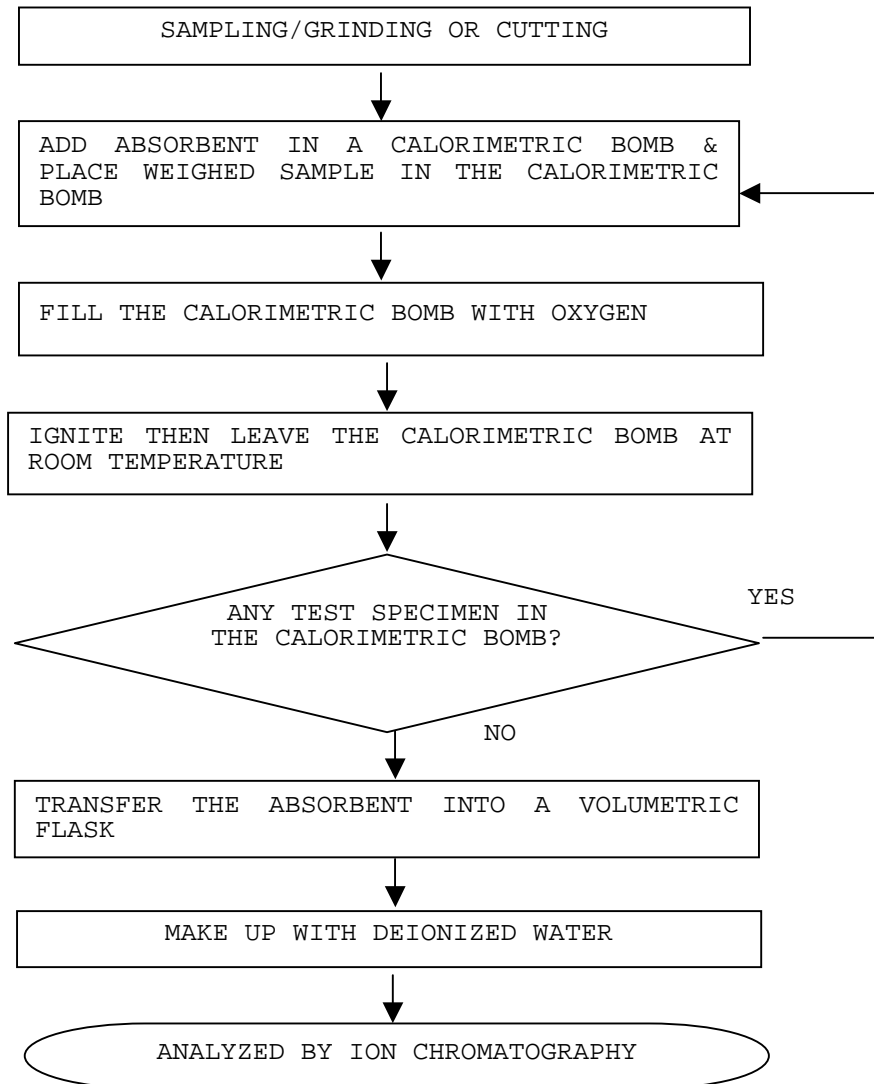
NUMBER: SZHH0048757801

TESTS CONDUCTED

(III) MEASUREMENT FLOWCHART:

TEST FOR HALOGEN CONTENT

REFERENCE METHOD: BS EN 14582:2007



END OF REPORT



TEST REPORT

NUMBER: SZHH0048757802

APPLICANT: LITTELFUSE, INC.
8755 WEST HIGGINS ROAD SUITE 500
CHICAGO IL 60631 USA

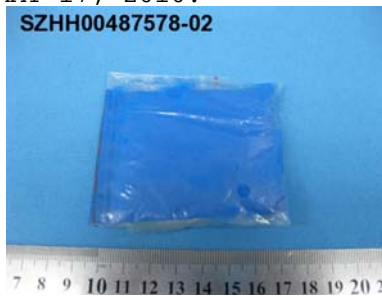
DATE: May 21, 2010

ATTN: KRISTEEN BACILA/ARSENIO CESISTA JR.

SAMPLE DESCRIPTION:

ONE (1) SUBMITTED SAMPLE SAID TO BE **BLUE PASTE.**

PART DESCRIPTION : BLUE SILICONE.
PART NUMBER : MS202.
DATE SAMPLE RECEIVED : MAY 17, 2010.
DATE TEST STARTED : MAY 17, 2010.



TESTS CONDUCTED:

AS REQUESTED BY THE APPLICANT, FOR DETAILS REFER TO ATTACHED PAGE(S)

AUTHORIZED BY:
FOR INTERTEK TESTING SERVICES
SHENZHEN LTD.



KARBON M.Y. WU
GENERAL MANAGER

**TEST REPORT**

NUMBER: SZHH0048757802

TESTS CONDUCTED

1 RoHS CHEMICAL TEST

(A) TEST RESULT SUMMARY:

TESTING ITEM	RESULT
CADMIUM (Cd) CONTENT (mg/kg)	ND (<2)
LEAD (Pb) CONTENT (mg/kg)	ND (<2)
MERCURY (Hg) CONTENT (mg/kg)	ND (<2)
CHROMIUM (VI)(Cr ⁶⁺) CONTENT (mg/kg)	ND (<1)
POLYBROMINATED BIPHENYLS (PBBs) (mg/kg)	
MONOBROMOBIPHENYL (MonoBB)	ND (<5)
DIBROMOBIPHENYL (DiBB)	ND (<5)
TRIBROMOBIPHENYL (TriBB)	ND (<5)
TETRABROMOBIPHENYL (TetraBB)	ND (<5)
PENTABROMOBIPHENYL (PentaBB)	ND (<5)
HEXABROMOBIPHENYL (HexaBB)	ND (<5)
HEPTABROMOBIPHENYL (HeptaBB)	ND (<5)
OCTABROMOBIPHENYL (OctaBB)	ND (<5)
NONABROMOBIPHENYL (NonaBB)	ND (<5)
DECABROMOBIPHENYL (DecaBB)	ND (<5)
POLYBROMINATED DIPHENYL ETHERS (PBDEs) (mg/kg)	
MONOBROMODIPHENYL ETHER (MonoBDE)	ND (<5)
DIBROMODIPHENYL ETHER (DiBDE)	ND (<5)
TRIBROMODIPHENYL ETHER (TriBDE)	ND (<5)
TETRABROMODIPHENYL ETHER (TetraBDE)	ND (<5)
PENTABROMODIPHENYL ETHER (PentaBDE)	ND (<5)
HEXABROMODIPHENYL ETHER (HexaBDE)	ND (<5)
HEPTABROMODIPHENYL ETHER (HeptaBDE)	ND (<5)
OCTABROMODIPHENYL ETHER (OctaBDE)	ND (<5)
NONABROMODIPHENYL ETHER (NonaBDE)	ND (<5)
DECABROMODIPHENYL ETHER (DecaBDE)	ND (<5)

CHEMIST: LV LINNA

mg/kg = MILLIGRAM PER KILOGRAM BASED ON DRY WEIGHT OF SAMPLE = ppm

< = LESS THAN

ND = NOT DETECTED

TEST REPORT

NUMBER: SZHH0048757802

TESTS CONDUCTED

(B) RoHS REQUIREMENT:

RESTRICTED SUBSTANCES	LIMITS
CADMIUM (Cd)	0.01% (100 ppm)
LEAD (Pb)	0.1% (1000 ppm)
MERCURY (Hg)	0.1% (1000 ppm)
CHROMIUM (VI) (Cr ⁶⁺)	0.1% (1000 ppm)
POLYBROMINATED BIPHENYLS (PBBs)	0.1% (1000 ppm)
POLYBROMINATED DIPHENYL ETHERS (PBDEs)	0.1% (1000 ppm)

THE ABOVE LIMITS WERE QUOTED FROM 2002/95/EC AND AMENDMENT 2005/618/EC FOR HOMOGENEOUS MATERIAL.

(C) TEST METHOD:

TESTING ITEM	TESTING METHOD	REPORTING LIMIT
CADMIUM (Cd) CONTENT	WITH REFERENCE TO IEC 62321 EDITION 1.0:2008, BY ACID DIGESTION AND DETERMINED BY ICP - OES	2 mg/kg
LEAD (Pb) CONTENT	WITH REFERENCE TO IEC 62321 EDITION 1.0:2008, BY ACID DIGESTION AND DETERMINED BY ICP - OES	2 mg/kg
MERCURY (Hg) CONTENT	WITH REFERENCE TO IEC 62321 EDITION 1.0:2008, BY ACID DIGESTION AND DETERMINED BY ICP - OES	2 mg/kg
CHROMIUM (VI) (Cr ⁶⁺) CONTENT	WITH REFERENCE TO IEC 62321 EDITION 1.0:2008, BY ALKALINE DIGESTION AND DETERMINED BY UV-VIS SPECTROPHOTOMETER	1 mg/kg
POLYBROMINATED BIPHENYLS (PBBs) & POLYBROMINATED DIPHENYL ETHERS (PBDEs)	WITH REFERENCE TO IEC 62321 EDITION 1.0:2008, BY SOLVENT EXTRACTION AND DETERMINED BY GC/MS AND FURTHER HPLC CONFIRMATION WHEN NECESSARY	5 mg/kg

DATE SAMPLE RECEIVED : MAY 17, 2010

TESTING PERIOD : MAY 17, 2010 TO MAY 20, 2010

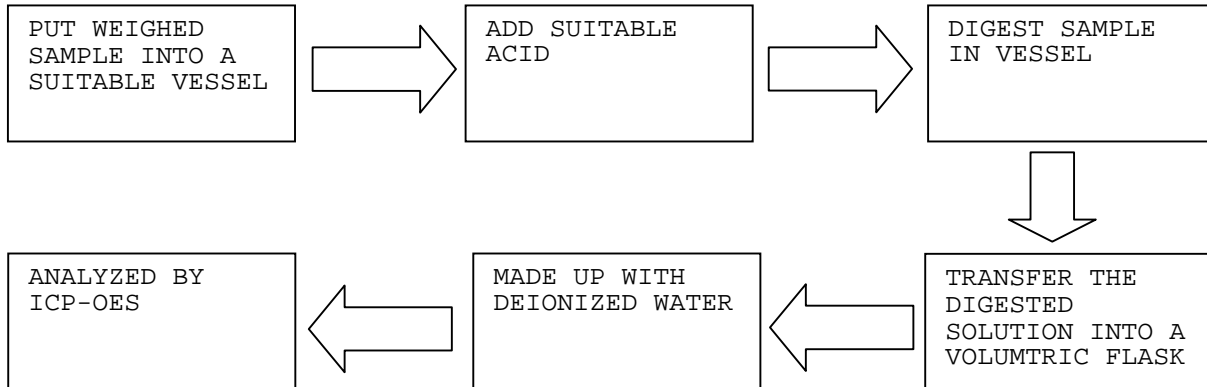
TEST REPORT

NUMBER: SZHH0048757802

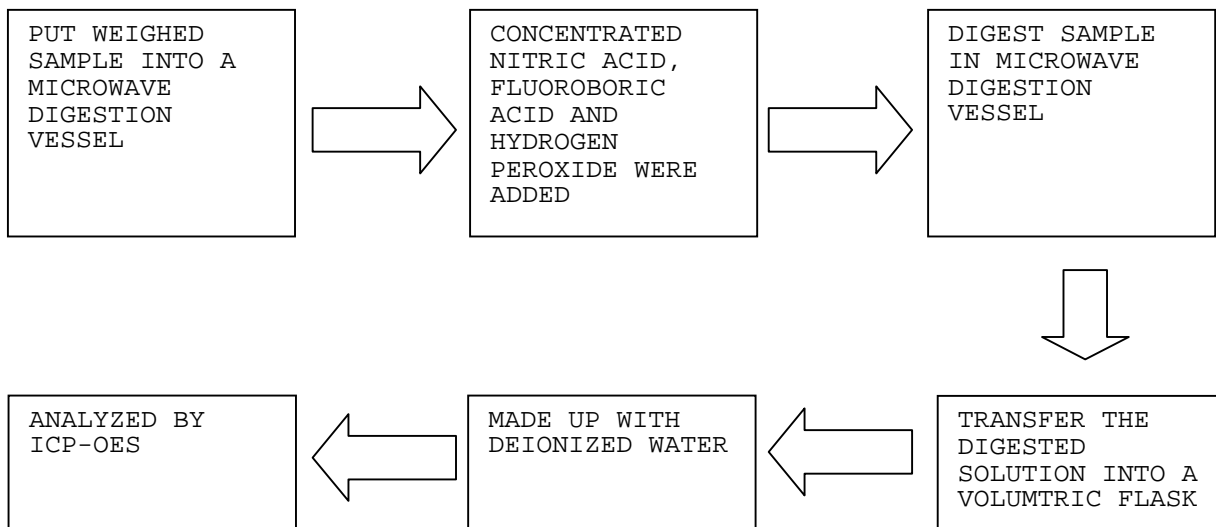
TESTS CONDUCTED

(D) MEASUREMENT FLOWCHART:

1. TEST FOR Cd/Pb CONTENTS



2. TEST FOR Hg CONTENT

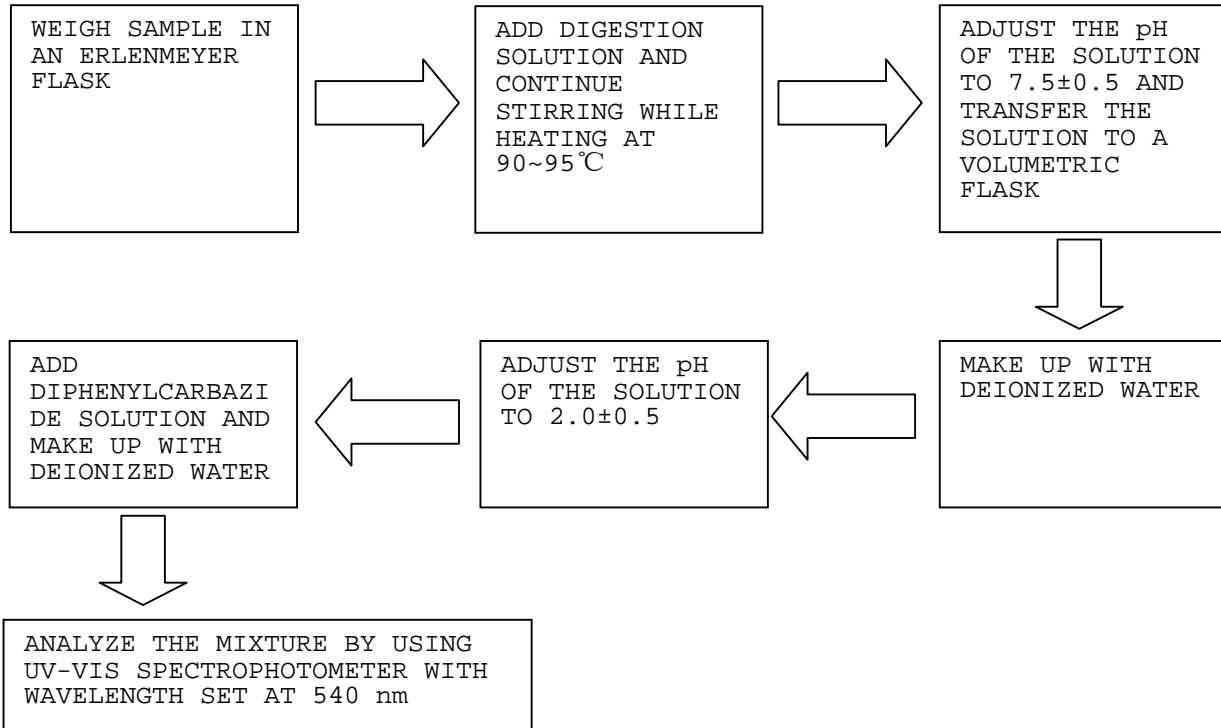


TEST REPORT

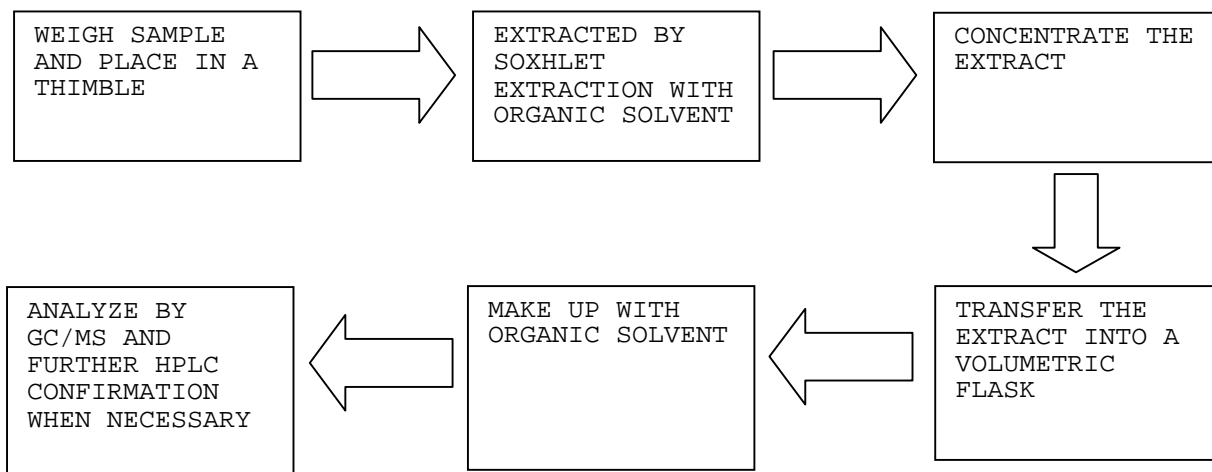
NUMBER: SZHH0048757802

TESTS CONDUCTED

3. TEST FOR CHROMIUM (VI) (Cr^{6+}) CONTENT (ALKALINE DIGESTION)



4. TEST FOR PBBs/PBDEs CONTENTS



**TEST REPORT**

NUMBER: SZHH0048757802

TESTS CONDUCTED

2 (I) TEST RESULT SUMMARY :

HALOGEN CONTENT :

<u>TESTING ITEM</u>	<u>RESULT (ppm)</u>
FLUORINE (F) CONTENT	ND
CHLORINE (Cl) CONTENT	827
BROMINE (Br) CONTENT	ND
IODINE (I) CONTENT	ND

REMARKS : ppm = PARTS PER MILLION BASED ON DRY WEIGHT OF SAMPLE

ND = NOT DETECTED

THE RELATED EXPAND UNCERTAINTY (U95) OF THE CHLORINE TEST IS 16%.

(II) TEST METHOD :

<u>TESTING ITEM</u>	<u>TESTING METHOD</u>	<u>REPORTING LIMIT</u>
HALOGEN (F, Cl, Br, I) CONTENT	WITH REFERENCE TO BS EN 14582:2007 BY CALORIMETRIC BOMB AND DETERMINED BY ION CHROMATOGRAPHY	50 ppm

REMARK : REPORTING LIMIT = QUANTITATION LIMIT OF ANALYTE IN SAMPLE

DATE SAMPLE RECEIVED : MAY 17, 2010

TESTING PERIOD : MAY 17, 2010 TO MAY 20, 2010

TEST REPORT

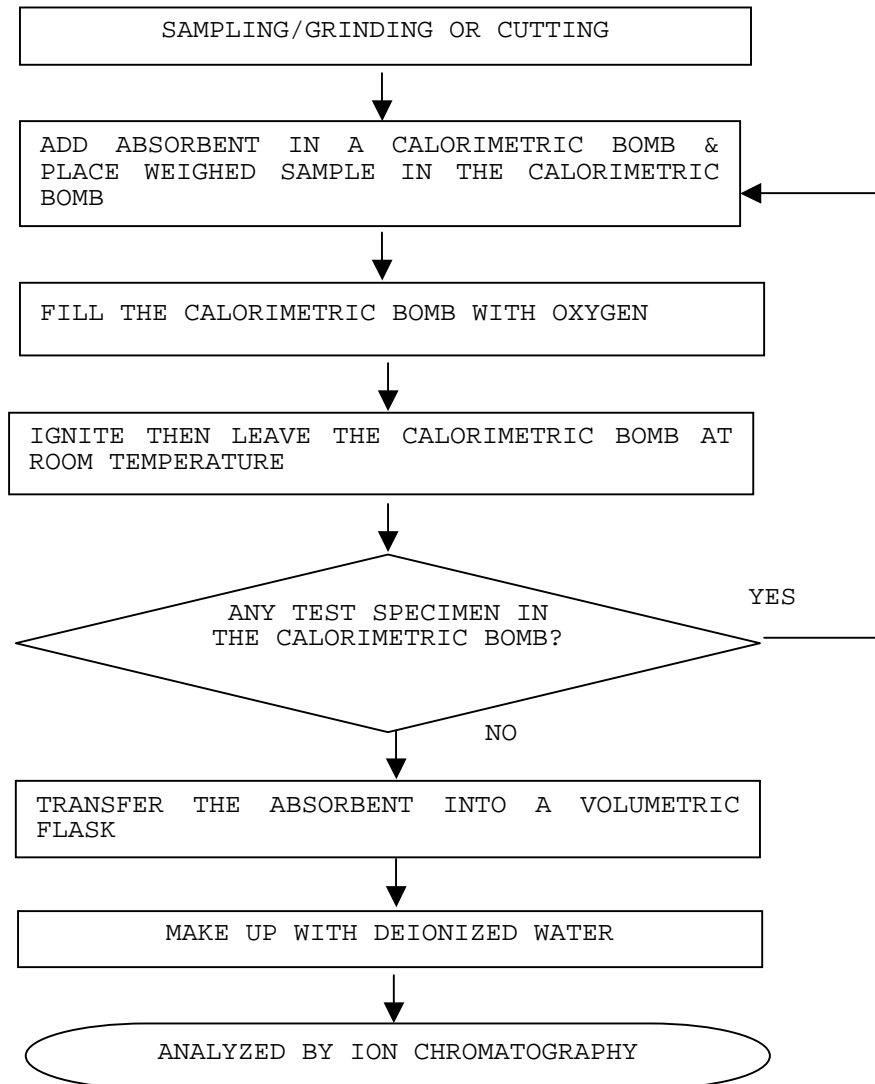
NUMBER: SZHH0048757802

TESTS CONDUCTED

(III) MEASUREMENT FLOWCHART:

TEST FOR HALOGEN CONTENT

REFERENCE METHOD: BS EN 14582:2007



END OF REPORT