



ICP Test Report Certification Packet

Company name: Littelfuse, Inc.

Product Series: Indicating 2AG Axial Leads

Product #: 230xxxSP Series

Issue Date: June 8, 2007

It is hereby certified by Littelfuse, Inc. that there is neither RoHS (EU Directive 2002/95/EC)-restricted substance nor such use, for materials to be used for unit parts, for packing/packaging materials, and for additives and the like in the manufacturing processes. In addition, it is hereby reported to you that the parts and sub-materials, the materials to be used for unit parts, the packing/packaging materials, and the additives and the like in the manufacturing processes, are all composed of the following components.

Issued by:

<Environmental Data Coordinator>

(1) Parts, sub-materials and unit parts

This document covers the indicating 2AG Axial Leads RoHS-Compliant series products manufactured by Littelfuse, Inc.

< Raw Materials Used

Please see Table 1

(2) The ICP data on all measurable substances

Please see appropriate pages as identified in Table 1

Remarks :

Table 1: List of Raw Materials covered by this report

Total Parts	Raw Material Part Number	Raw Material Description	Page(s)
1	910-537-3	Cap	3-5
2	C909-369-001	Body	6-10
3	C909-367-001	Body	11-13
4	082xxx-001	Element	14-16
5	082xxx-001	Element / Lead Wire	17-19
6	692535-001 (692471)	Solder	20-22
7	087259	HMA	23-25
8	087244	HMA	26-28
9	648106-001	Yarn	29-31
10	425209	Florescein	32-36
11	090187	Filler	37-39



Test Report

No. 004392-006803 Date: April 23, 2007

Page 1 of 3

LITTLEFUSE INC

800 E Northwest Highway
Desplaines Cook IL 60016
United States

Attn: Donna Untiedt

The following sample was submitted and
identified by/on behalf of the client as:

Cap, Style # 910-537-3

Sample Received Date:

4/12/2007

Testing Period

4/12/2007 to 4/23/2007

Test Requested: In accordance with the RoHS Directive 2002/95/EC and its amendment directives

Test Method: With reference to **IEC 62321, Ed. 111/54/CDV**

Procedures for the Determination of Levels of Regulated Substances in
Electro technical Products

- (1) Determination of Cadmium by ICP.
- (2) Determination of Lead by ICP.
- (3) Determination of Mercury by ICP.
- (4) Determination of Hexavalent Chromium by Spot test / Colorimetric Method

Test Result(s): Please refer to next page(s).

Signed for and on behalf of SGS US Testing Co

Tang S. Peng, Ph.D.
Chemistry Laboratory Manager

THIS TEST REPORT IS ISSUED BY THE COMPANY SUBJECT TO ITS GENERAL CONDITIONS OF SERVICE PRINTED OVERLEAF OR AVAILABLE ON REQUEST AND ACCESSIBLE AT WWW.SGS.COM. ATTENTION IS DRAWN TO THE LIMITATIONS OF LIABILITY, INDEMNIFICATION AND JURISDICTIONAL ISSUES DEFINED THEREIN. UNLESS OTHERWISE STATED THE RESULTS SHOWN IN THIS TEST REPORT REFER ONLY TO THE SAMPLE(S) TESTED. THIS TEST REPORT CANNOT BE REPRODUCED EXCEPT IN FULL, WITHOUT PRIOR WRITTEN PERMISSION OF THE COMPANY. ANY UNAUTHORIZED ALTERATION, FORGERY OR FALSIFICATION OF THE CONTENT OR APPEARANCE OF THIS REPORT IS UNLAWFUL AND OFFENDERS MAY BE PROSECUTED TO THE FULLEST EXTENT OF THE LAW.



Test Report

No. 004392-006803 Date: April 23, 2007

Page 2 of 3

Test results by chemical method (Unit: mg/kg):

Test Items	Method (refer to)	Result	Reporting Limit	RoHS Limit
Cadmium (Cd)	(1)	n.d.	5	100
Lead (Pb)	(2)	6.5	5	1000
Mercury (Hg)	(3)	n.d.	5	1000
Hexavalent Chromium [Cr(VI)]	(4)	---	5	1000
Hexavalent Chromium (CrVI) by Spot test/boiling water extraction	(4)	Negative	See Note (5)	#

Note:

(1)mg/kg = ppm

(2)RL = Reporting Limit

(3)n.d. = Not Detected = denoted less than reporting limit

(4)Spot-test:

Negative = Absence of Cr(VI) coating, Positive = Presence of Cr(VI) coating;

(The tested sample should be further verified by boiling-water-extraction method if the spot test result cannot be confirmed.)

Boiling-water-extraction:

Negative = Absence of Cr(VI) coating

Positive = Presence of Cr(VI) coating; the detected concentration in boiling-water-extraction solution is equal or greater than 0.02 mg/kg with 50 cm² sample surface area.

(5)# = Positive indicates the presence of Hexavalent Chromium on the tested areas and result be regarded as no comply with RoHS requirement.

Negative indicates the absence of Cr(VI) on the tested areas and result be regarded as comply with RoHS requirement.

(6)"-" = Not Regulated

(7)"---" = Not Conducted

THIS TEST REPORT IS ISSUED BY THE COMPANY SUBJECT TO ITS GENERAL CONDITIONS OF SERVICE PRINTED OVERLEAF OR AVAILABLE ON REQUEST AND ACCESSIBLE AT WWW.SGS.COM. ATTENTION IS DRAWN TO THE LIMITATIONS OF LIABILITY, INDEMNIFICATION AND JURISDICTIONAL ISSUES DEFINED THEREIN. UNLESS OTHERWISE STATED THE RESULTS SHOWN IN THIS TEST REPORT REFER ONLY TO THE SAMPLE(S) TESTED. THIS TEST REPORT CANNOT BE REPRODUCED EXCEPT IN FULL, WITHOUT PRIOR WRITTEN PERMISSION OF THE COMPANY. ANY UNAUTHORIZED ALTERATION, FORGERY OR FALSIFICATION OF THE CONTENT OR APPEARANCE OF THIS REPORT IS UNLAWFUL AND OFFENDERS MAY BE PROSECUTED TO THE FULLEST EXTENT OF THE LAW.

Test Report

No. 004392-006803 Date: April 23, 2007

Page 3 of 3

Sample Photo:



SGS authenticate the photo on original report only

*** End of Report ***

THIS TEST REPORT IS ISSUED BY THE COMPANY SUBJECT TO ITS GENERAL CONDITIONS OF SERVICE PRINTED OVERLEAF OR AVAILABLE ON REQUEST AND ACCESSIBLE AT WWW.SGS.COM. ATTENTION IS DRAWN TO THE LIMITATIONS OF LIABILITY, INDEMNIFICATION AND JURISDICTIONAL ISSUES DEFINED THEREIN. UNLESS OTHERWISE STATED THE RESULTS SHOWN IN THIS TEST REPORT REFER ONLY TO THE SAMPLE(S) TESTED. THIS TEST REPORT CANNOT BE REPRODUCED EXCEPT IN FULL, WITHOUT PRIOR WRITTEN PERMISSION OF THE COMPANY. ANY UNAUTHORIZED ALTERATION, FORGERY OR FALSIFICATION OF THE CONTENT OR APPEARANCE OF THIS REPORT IS UNLAWFUL AND OFFENDERS MAY BE PROSECUTED TO THE FULLEST EXTENT OF THE LAW.

測試報告

號碼：CE/2006/C1873A 日期：2006/12/18 頁數：1 of 5

廈門立鈞電子元件有限公司

XIAMEN LICHUN ELECTRONIC ELEMENT CO., LTD.

輝星玻璃管有限公司

V-STAR GLASS TUBE CO., LTD.

中國福建省廈門市集美區杏林西路 42-2 號

42-2 XINGLIN WEST ROAD, JIMEI DISTRICT, XIAMEN, FUJIAN, P.R.C.



本報告為客戶所委託的樣品，樣品名稱為"保險絲用玻璃管"所做的測試。

Report on the submitted sample said to be SODA LIME GLASS TUBES.

樣品型號(Style/Item No) : 3.6, 4.6, 5.2, 6.3, 10.3
 收件日期(Sample Receiving Date) : 2006/12/08
 測試期間(Testing Period) : 2006/12/08 TO 2006/12/15

測試需求 / Test Requested : 參照 RoHS 2002/95/EC 及其修定指令要求。 / In accordance with the RoHS Directive 2002/95/EC, and its amendment directives.

測試方法 / Test Method : 參考 IEC 62321, Ed. 1 111/54/CDV 方法檢測。 / In accordance with the RoHS Directive 2002/95/EC, and its amendment directives.

- (1) 用感應耦合電漿原子發射光譜儀(ICP-AES)檢測鎘含量。 / Determination of Cadmium by ICP-AES.
- (2) 用感應耦合電漿原子發射光譜儀(ICP-AES)檢測鉛含量。 / Determination of Lead by ICP-AES
- (3) 用感應耦合電漿原子發射光譜儀(ICP-AES)檢測汞含量。 / Determination of Mercury by ICP-AES
- (4) 用UV-VIS檢測六價鉻含量。 / Determination of Hexavalent Chromium by UV/Vis Spectrometry.
- (5) 以氣相層析儀/質譜儀檢測多溴聯苯和多溴聯苯醚含量。 / Determination of PBB and PBDE by GC/MS.

測試結果 / Test Result(s) : 請見下一頁。


 Daniel Yen, M.R. / Operation Manager
 Signed for and on behalf of
 SGS TAIWAN LTD.

測試報告

號碼：CE/2006/C1873A 日期：2006/12/18 頁數：2 of 5

廈門立鈞電子元件有限公司

XIAMEN LICHUN ELECTRONIC ELEMENT CO., LTD.

輝星玻璃管有限公司

V-STAR GLASS TUBE CO., LTD.

中國福建省廈門市集美區杏林西路 42-2 號

42-2 XINGLIN WEST ROAD, JIMEI DISTRICT, XIAMEN, FUJIAN, P.R.C.



測試結果 (單位: mg/kg) / Test Result(s)

測試項目 / Test Item (s):	測試方法 Method (Refer to)	結果 / Result	方法偵測 極限值 (MDL)
		No.1	
鎘 / Cadmium (Cd)	(1)	n.d.	2
鉛 / Lead (Pb)	(2)	83.9	2
汞 / Mercury (Hg)	(3)	n.d.	2
六價鉻 / Hexavalent Chromium (CrVI) by alkaline extraction	(4)	n.d.	2
多溴聯苯總和 / Sum of PBBs	(5)	n.d.	-
一溴聯苯 / Monobromobiphenyl		n.d.	5
二溴聯苯 / Dibromobiphenyl		n.d.	5
三溴聯苯 / Tribromobiphenyl		n.d.	5
四溴聯苯 / Tetrabromobiphenyl		n.d.	5
五溴聯苯 / Pentabromobiphenyl		n.d.	5
六溴聯苯 / Hexabromobiphenyl		n.d.	5
七溴聯苯 / Heptabromobiphenyl		n.d.	5
八溴聯苯 / Octabromobiphenyl		n.d.	5
九溴聯苯 / Nonabromobiphenyl		n.d.	5
十溴聯苯 / Decabromobiphenyl		n.d.	5
多溴聯苯醚總和 (一至九溴) (備註4) / Sum of PBDEs (Mono to Nona) (Note 4)		n.d.	-
一溴聯苯醚 / Monobromobiphenyl ether		n.d.	5
二溴聯苯醚 / Dibromobiphenyl ether		n.d.	5
三溴聯苯醚 / Tribromobiphenyl ether		n.d.	5
四溴聯苯醚 / Tetrabromobiphenyl ether		n.d.	5
五溴聯苯醚 / Pentabromobiphenyl ether		n.d.	5
六溴聯苯醚 / Hexabromobiphenyl ether		n.d.	5
七溴聯苯醚 / Heptabromobiphenyl ether		n.d.	5
八溴聯苯醚 / Octabromobiphenyl ether		n.d.	5
九溴聯苯醚 / Nonabromobiphenyl ether		n.d.	5
十溴聯苯醚 / Decabromobiphenyl ether		n.d.	5
多溴聯苯醚總和 (一至十溴) / Sum of PBDEs (Mono to Nona) (Note 4)		n.d.	-

測試部位描述 / Test Part Description:

NO.1 : 透明玻璃管 / TRANSPARENT GLASS TUBE



測試報告

號碼：CE/2006/C1873A 日期：2006/12/18 頁數：3 of 5

廈門立鈞電子元件有限公司

XIAMEN LICHUN ELECTRONIC ELEMENT CO., LTD.

輝星玻璃管有限公司

V-STAR GLASS TUBE CO., LTD.

中國福建省廈門市集美區杏林西路 42-2 號

42-2 XINGLIN WEST ROAD, JIMEI DISTRICT, XIAMEN, FUJIAN, P.R.C.



Note: 1. mg/kg = ppm

2. n.d. = Not Detected / 未檢出

3. MDL = Method Detection Limit / 方法偵測極限值

4. Sum of Mono to NonaBDE & according to 2005/717/EC DecaBDE is exempt.

根據2005年10月13日歐盟會議公佈2005/717/EC，修訂2002/95/EC內容，通過解除
高分子材質中十溴聯苯醚之使用限制。

5. "-" = Not Regulated / 無規格值

測試報告

號碼：CE/2006/C1873A 日期：2006/12/18 頁數：4 of 5

廈門立鈞電子元件有限公司

XIAMEN LICHUN ELECTRONIC ELEMENT CO., LTD.

輝星玻璃管有限公司

V-STAR GLASS TUBE CO., LTD.

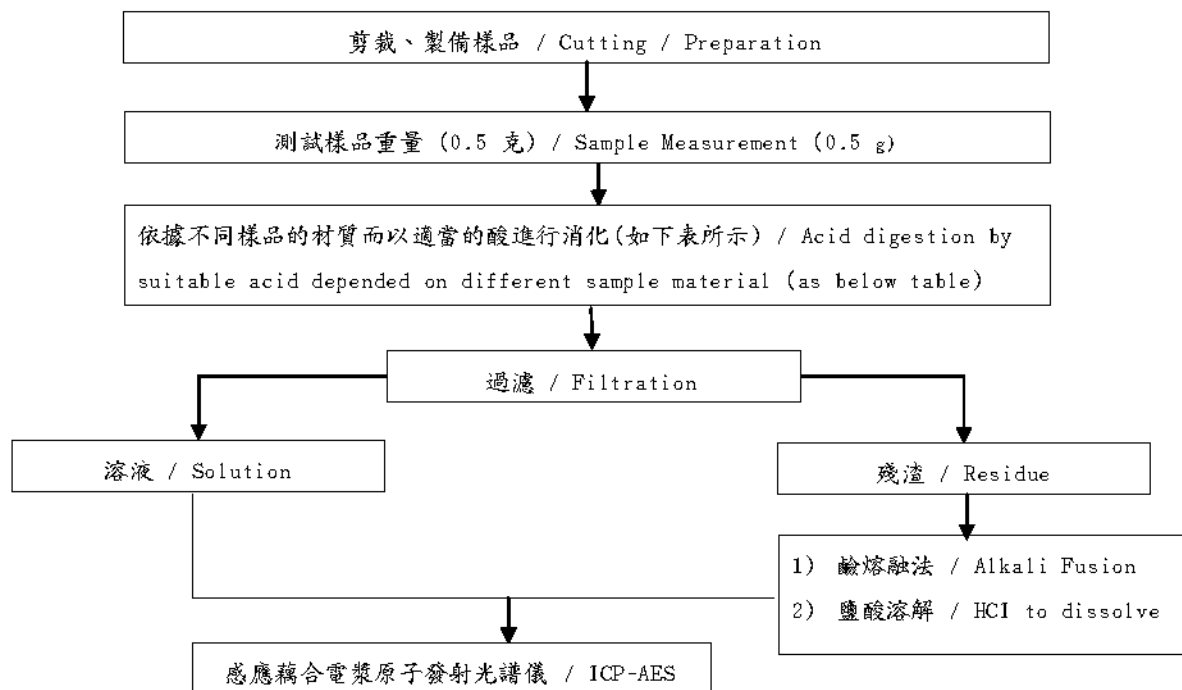
中國福建省廈門市集美區杏林西路 42-2 號

42-2 XINGLIN WEST ROAD, JIMEI DISTRICT, XIAMEN, FUJIAN, P.R.C.



- 1) 根據以下的流程圖之條件，樣品已完全溶解。 / These samples were dissolved totally by pre-conditioning method according to below flow chart.
- 2) 測試人員：李安仁 / Name of the person who made measurement: Anren Lee
- 3) 測試負責人：葉禮源 / Name of the person in charge of measurement: Daniel Yeh

鎘、鉛的消化流程圖 / Method 1: Flow Chart of Digestion for Cd、Pb analysis



鋼,銅,鋁,焊錫 / Steel, copper, aluminum, solder	王水,硝酸,鹽酸,氫氟酸,雙氧水 / Aqua regia, HNO ₃ , HCl, HF, H ₂ O ₂
玻璃 / Glass	硝酸,氫氟酸 / HNO ₃ /HF
金,鉑,鈀,陶瓷 / Gold, platinum, palladium, ceramic	王水 / Aqua regia
銀 / Silver	硝酸 / HNO ₃
塑膠 / Plastic	硫酸,雙氧水,硝酸,鹽酸 / H ₂ SO ₄ , H ₂ O ₂ , HNO ₃ , HCl
其他 / Others	加入任何酸至完全溶解 / Any acid to total digestion

測試報告

號碼：CE/2006/C1873A 日期：2006/12/18 頁數：5 of 5

廈門立鈞電子元件有限公司

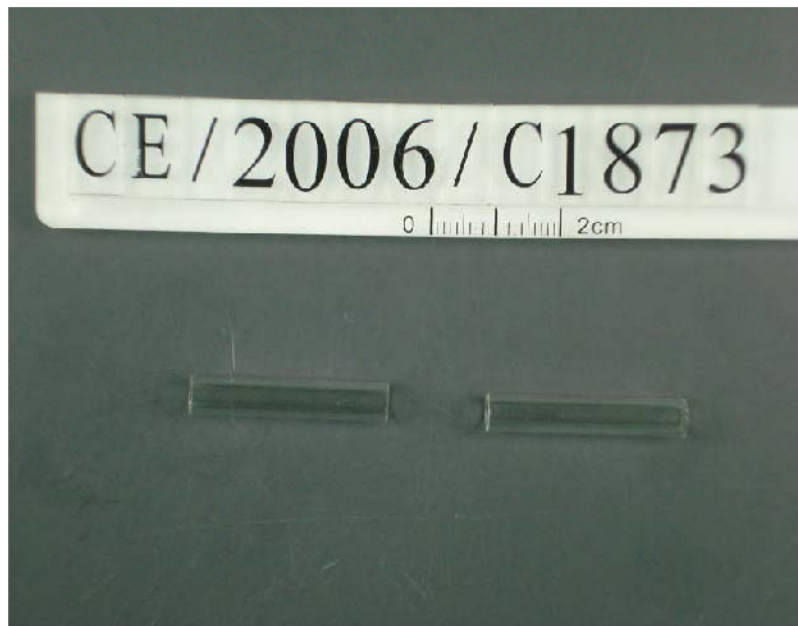
XIAMEN LICHUN ELECTRONIC ELEMENT CO., LTD.

輝星玻璃管有限公司

V-STAR GLASS TUBE CO., LTD.

中國福建省廈門市集美區杏林西路 42-2 號

42-2 XINGLIN WEST ROAD, JIMEI DISTRICT, XIAMEN, FUJIAN, P.R.C.



** 報告結尾 **

Test Report

No. SH7041178/CHEM

Date: Apr. 24, 2007

Page 1 of 3

SUZHOU LITTELFUSE OVS LTD.
6 XINGHAI STREET SUZHOU INDUSTRIAL PARK SUZHOU JIANGSU P.R.CHINA

The following sample(s) was/were submitted and identified by/on behalf of the client as:

Sample Name : Glass Body
SGS Ref No. : 10345381
Part No. : C909-367-001
Main Substance : Borosilicate (Al_2O_3 , SiO_2)

Sample Receiving Date : Apr.20, 2007
Testing Period : Apr.20 – 24, 2007

Test Requested : In accordance with the RoHS Directive 2002/95/EC, and its amendment directives.

Test Method : With reference to IEC 62321, Ed.1 111/54/CDV
Procedures for the Determination of Levels of Regulated Substances in
Electrotechnical Products
(1) Determination of Cadmium by ICP and AAS.
(2) Determination of Lead by ICP and AAS.
(3) Determination of Mercury by ICP.
(4) Determination of Hexavalent Chromium by Colorimetric Method.
(5) Determination of PBBs and PBDEs by GC/MS.

Test Results : Please refer to next pages

Conclusion : Based on the performed tests on submitted samples, the results comply with the
RoHS Directive 2002/95/EC and its subsequent amendments.

Signed for and on behalf of
SGS-CSTC Chemical Laboratory


Ella Zhang
Sr. Section Head

Signed for and on behalf of
SGS-CSTC Chemical Laboratory


Sandy Hao
Lab Manager

This Test Report is issued by the Company subject to its General Conditions of Service printed overleaf or available on request and accessible at www.sgs.com. Attention is drawn to the limitations of liability, indemnification and jurisdictional issues defined therein. Unless otherwise stated the results shown in this test report refer only to the sample(s) tested. This test report cannot be reproduced, except in full, without prior written permission of the Company. Any unauthorized alteration, forgery or falsification of the content or appearance of this report is unlawful and offenders will be prosecuted to the fullest extent of the law.

Test Report

No. SH7041178/CHEM

Date: Apr. 24, 2007

Page 2 of 3

Test results by chemical method (Unit: mg/kg)

Test Item(s):	Method (refer to)	1	MDL	RoHS Limit
Cadmium(Cd)	(1)	ND	2	100
Lead (Pb)	(2)	6	2	1000
Mercury (Hg)	(3)	ND	2	1000
Hexavalent Chromium (CrVI) by alkaline extraction	(4)	ND	2	1000
Sum of PBBs	(5)	ND	-	1000
Monobromobiphenyl		ND	5	-
Dibromobiphenyl		ND	5	-
Tribromobiphenyl		ND	5	-
Tetrabromobiphenyl		ND	5	-
Hexabromobiphenyl		ND	5	-
Pentabromobiphenyl		ND	5	-
Heptabromobiphenyl		ND	5	-
Octabromobiphenyl		ND	5	-
Nonabromobiphenyl		ND	5	-
Decabromobiphenyl		ND	5	-
Sum of PBDEs (Note 4)		ND	-	1000
Monobromodiphenyl ether		ND	5	-
Dibromodiphenyl ether		ND	5	-
Tribromodiphenyl ether		ND	5	-
Tetrabromodiphenyl ether		ND	5	-
Pentabromodiphenyl ether		ND	5	-
Hexabromodiphenyl ether		ND	5	-
Heptabromodiphenyl ether		ND	5	-
Octabromodiphenyl ether		ND	5	-
Nonabromodiphenyl ether		ND	5	-
Decabromodiphenyl ether		ND	5	-
Sum of PBDEs (Mono to Deca)		ND	-	-

Test Part Description:

- Transparent glass tube

Note:

- (1) mg/kg = ppm
- (2) ND = Not Detected
- (3) MDL = Method Detection Limit
- (4) Sum of Mono to NonaBDE & according to 2005/717/EC DecaBDE is exempt
- (5) "-" = Not Regulated
- (6) The maximum permissible limit is quoted from the document 2005/618/EC amending RoHS directive 2002/95/EC

This Test Report is issued by the Company subject to its General Conditions of Service printed overleaf or available on request and accessible at www.sgs.com. Attention is drawn to the limitations of liability, indemnification and jurisdictional issues defined therein. Unless otherwise stated the results shown in this test report refer only to the sample(s) tested. This test report cannot be reproduced, except in full, without prior written permission of the Company. Any unauthorized alteration, forgery or falsification of the content or appearance of this report is unlawful and offenders will be prosecuted to the fullest extent of the law.



10/F, 3rd Building, No. 889, Yishan Road, Shanghai, China 200233
中国·上海·宜山路889号3号楼10层 邮编:200233

Tel: (86-21) 61402553
HL: (86-21) 61402594

Fax: (86-21) 64953679
HL: (86-21) 54500353

www.cn.sgs.com
sgs.china@sgs.com

SHCHEM 1216075

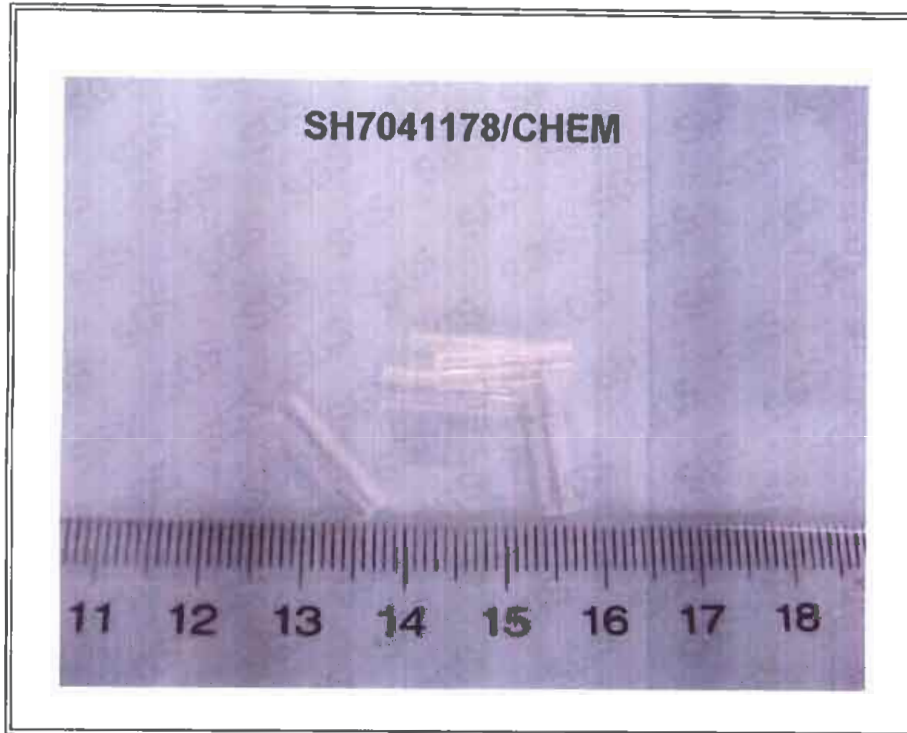
Test Report

No. SH7041178/CHEM

Date: Apr. 24, 2007

Page 3 of 3

Sample photo:



SGS authenticate the photo on original report only

*** End of Report ***

This Test Report is issued by the Company subject to its General Conditions of Service printed overleaf or available on request and accessible at www.sgs.com. Attention is drawn to the limitations of liability, indemnification and jurisdictional issues defined therein. Unless otherwise stated the results shown in this test report refer only to the sample(s) tested. This test report cannot be reproduced, except in full, without prior written permission of the Company. Any unauthorized alteration, forgery or falsification of the content or appearance of this report is unlawful and offenders will be prosecuted to the fullest extent of the law.



*0/F, 3rd Building, No. 888 Yishan Road, Shanghai, China 200233
中国·上海·宜山路888号3号楼10层 邮编: 200233

TEL: (86-21) 61402553
HL: (86-21) 61402594

TEL: (86-21) 64953679
HL: (86-21) 64500353

www.sgs.com
sgs.china@sgs.com

SHCHEM 1216076

Test Report

No. : CE/2007/22239 Date : 2007/02/14 Page : 1 of 3

LITTELFUSE INC.
800 E. NORTHWEST HWY. DES PLAINES, IL 60016



The following sample(s) was/were submitted and identified by/on behalf of the client as :


Sample Description : 99% Cu Sn PLATED (082240-001)
Style/Item No. : 082xxx-001
Facility : PHILIPPINES
Sample Receiving Date : 2007/02/09
Testing Period : 2007/02/09 TO 2007/02/14

Test Requested : In accordance with the RoHS Directive 2002/95/EC, and its amendment directives.

Test Method : With reference to IEC 62321, Ed.1 111/54/CDV
Procedures for the Determination of Levels of Regulated Substances in Electrotechnical Products.

- (1) Determination of Cadmium by ICP-AES.
- (2) Determination of Lead by ICP-AES.
- (3) Determination of Mercury by ICP-AES.
- (4) Determination of Hexavalent Chromium for metallic samples by Spot test / Colorimetric Method.

Test Result(s) : Please refer to next page(s).


Daniel Yeh, M.R. / Operation Manager
Signed for and on behalf of
SGS TAIWAN LTD.



Test Report

No. : CE/2007/22239 Date : 2007/02/14 Page : 2 of 3

LITTELFUSE INC.
800 E. NORTHWEST HWY. DES PLAINES, IL 60016



Test results by chemical method (Unit: mg/kg)

Test Item (s):	Method (Refer to)	Result		MDL
		No.1	No.2	
Cadmium (Cd)	(1)	n.d.	--	2
Lead (Pb)	(2)	60.0	--	2
Mercury (Hg)	(3)	n.d.	--	2
Hexavalent Chromium Cr(VI) by Spot test / boiling water extraction	(4)	--	Negative	See Note 4

TEST PART DESCRIPTION:

NO.1 : SILVER COLORED METAL WIRE
NO.2 : PLATING LAYER OF SILVER COLORED METAL WIRE

- Note :
1. mg/kg = ppm
 2. n.d. = Not Detected
 3. MDL = Method Detection Limit
 4. Spot-test:
 - Negative = Absence of Cr(VI) coating / surface layer,
 - Positive = Presence of Cr(VI) coating / surface layer;
 - (The tested sample should be further verified by boiling-water-extraction method if the spot test result cannot be confirmed.)
 - Boiling-water-extraction:
 - Negative = Absence of Cr(VI) coating / surface layer.
 - Positive = Presence of Cr(VI) coating / surface layer;
 - the detected concentration in boiling-water-extraction solution is equal or greater than 0.02 mg/kg with 50 cm² sample surface area.
 5. "--" = Not Conducted

Test Report

No. : CE/2007/22239 Date : 2007/02/14 Page : 3 of 3

LITTELFUSE INC.
800 E. NORTHWEST HWY. DES PLAINES, IL 60016



** End of Report **



Test Report

No. 004392-006802 Date: April 23, 2007

Page 1 of 3

LITTLEFUSE INC
800 E Northwest Highway
Desplaines Cook IL 60016
United States

Attn: Donna Untiedt

The following sample was submitted and
identified by/on behalf of the client as:

Cu CDA 102 Sn Plate (082706), Style # 082xxx

Sample Received Date:

4/12/2007

Testing Period

4/12/2007 to 4/23/2007

Test Requested: In accordance with the RoHS Directive 2002/95/EC and its amendment directives

Test Method: With reference to **IEC 62321, Ed. 111/54/CDV**
Procedures for the Determination of Levels of Regulated Substances in
Electro technical Products
(1) Determination of Cadmium by ICP.
(2) Determination of Lead by ICP.
(3) Determination of Mercury by ICP.
(4) Determination of Hexavalent Chromium by Spot test / Colorimetric Method

Test Result(s): Please refer to next page(s).

Signed for and on behalf of SGS US Testing Co

Tang S. Peng, Ph.D.
Chemistry Laboratory Manager

THIS TEST REPORT IS ISSUED BY THE COMPANY SUBJECT TO ITS GENERAL CONDITIONS OF SERVICE PRINTED OVERLEAF OR AVAILABLE ON REQUEST AND ACCESSIBLE AT WWW.SGS.COM. ATTENTION IS DRAWN TO THE LIMITATIONS OF LIABILITY, INDEMNIFICATION AND JURISDICTIONAL ISSUES DEFINED THEREIN. UNLESS OTHERWISE STATED THE RESULTS SHOWN IN THIS TEST REPORT REFER ONLY TO THE SAMPLE(S) TESTED. THIS TEST REPORT CANNOT BE REPRODUCED EXCEPT IN FULL, WITHOUT PRIOR WRITTEN PERMISSION OF THE COMPANY. ANY UNAUTHORIZED ALTERATION, FORGERY OR FALSIFICATION OF THE CONTENT OR APPEARANCE OF THIS REPORT IS UNLAWFUL AND OFFENDERS MAY BE PROSECUTED TO THE FULLEST EXTENT OF THE LAW.



Test Report

No. 004392-006802 Date: April 23, 2007

Page 2 of 3

Test results by chemical method (Unit: mg/kg):

Test Items	Method (refer to)	Result	Reporting Limit	RoHS Limit
Cadmium (Cd)	(1)	n.d.	5	100
Lead (Pb)	(2)	11	5	1000
Mercury (Hg)	(3)	n.d.	5	1000
Hexavalent Chromium [Cr(VI)]	(4)	---	5	1000
Hexavalent Chromium (CrVI) by Spot test/boiling water extraction	(4)	Negative	See Note (5)	#

Note:

(1)mg/kg = ppm

(2)RL = Reporting Limit

(3)n.d. = Not Detected = denoted less than reporting limit

(4)Spot-test:

Negative = Absence of Cr(VI) coating, Positive = Presence of Cr(VI) coating;

(The tested sample should be further verified by boiling-water-extraction method if the spot test result cannot be confirmed.)

Boiling-water-extraction:

Negative = Absence of Cr(VI) coating

Positive = Presence of Cr(VI) coating; the detected concentration in boiling-water-extraction solution is equal or greater than 0.02 mg/kg with 50 cm² sample surface area.

(5)# = Positive indicates the presence of Hexavalent Chromium on the tested areas and result be regarded as no comply with RoHS requirement.

Negative indicates the absence of Cr(VI) on the tested areas and result be regarded as comply with RoHS requirement.

(6)"-" = Not Regulated

(7)"---" = Not Conducted

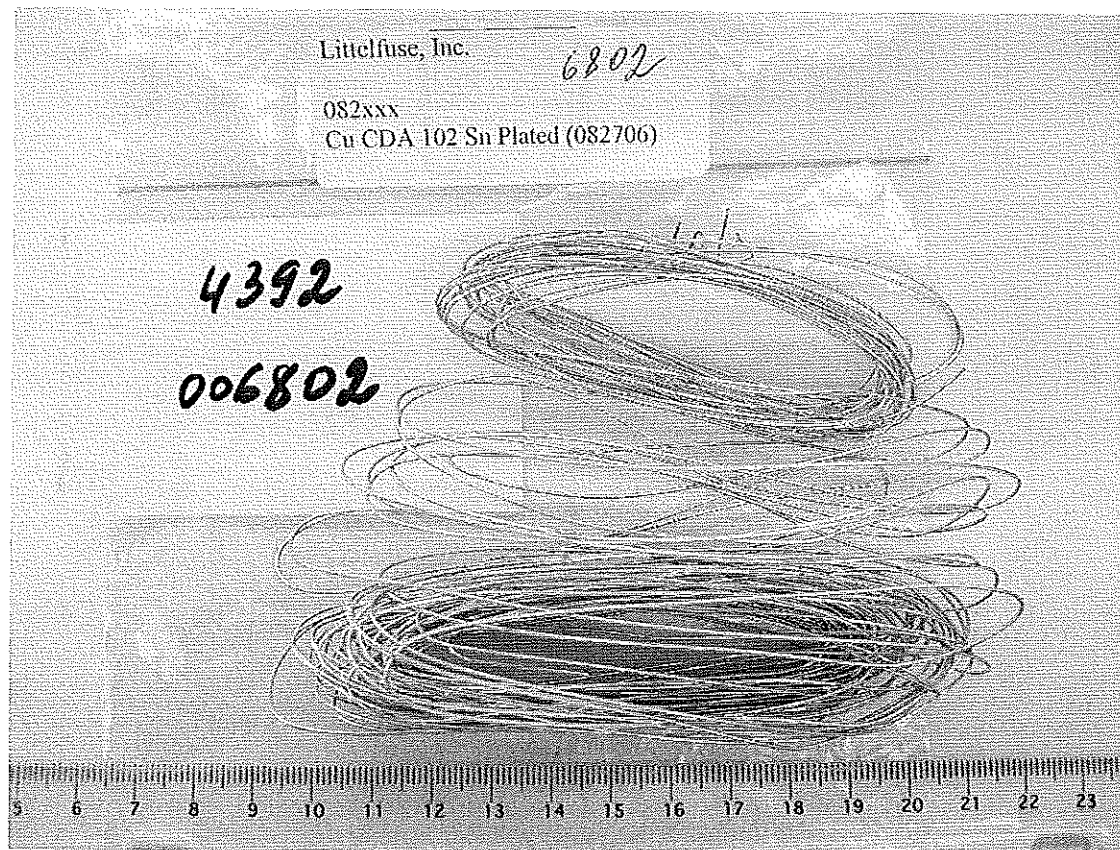
THIS TEST REPORT IS ISSUED BY THE COMPANY SUBJECT TO ITS GENERAL CONDITIONS OF SERVICE PRINTED OVERLEAF OR AVAILABLE ON REQUEST AND ACCESSIBLE AT WWW.SGS.COM. ATTENTION IS DRAWN TO THE LIMITATIONS OF LIABILITY, INDEMNIFICATION AND JURISDICTIONAL ISSUES DEFINED THEREIN. UNLESS OTHERWISE STATED THE RESULTS SHOWN IN THIS TEST REPORT REFER ONLY TO THE SAMPLE(S) TESTED. THIS TEST REPORT CANNOT BE REPRODUCED EXCEPT IN FULL, WITHOUT PRIOR WRITTEN PERMISSION OF THE COMPANY. ANY UNAUTHORIZED ALTERATION, FORGERY OR FALSIFICATION OF THE CONTENT OR APPEARANCE OF THIS REPORT IS UNLAWFUL AND OFFENDERS MAY BE PROSECUTED TO THE FULLEST EXTENT OF THE LAW.

Test Report

No. 004392-006802 Date: April 23, 2007

Page 3 of 3

Sample Photo:



SGS authenticate the photo on original report only

*** End of Report ***

THIS TEST REPORT IS ISSUED BY THE COMPANY SUBJECT TO ITS GENERAL CONDITIONS OF SERVICE PRINTED OVERLEAF OR AVAILABLE ON REQUEST AND ACCESSIBLE AT WWW.SGS.COM. ATTENTION IS DRAWN TO THE LIMITATIONS OF LIABILITY, INDEMNIFICATION AND JURISDICTIONAL ISSUES DEFINED THEREIN. UNLESS OTHERWISE STATED THE RESULTS SHOWN IN THIS TEST REPORT REFER ONLY TO THE SAMPLE(S) TESTED. THIS TEST REPORT CANNOT BE REPRODUCED EXCEPT IN FULL, WITHOUT PRIOR WRITTEN PERMISSION OF THE COMPANY. ANY UNAUTHORIZED ALTERATION, FORGERY OR FALSIFICATION OF THE CONTENT OR APPEARANCE OF THIS REPORT IS UNLAWFUL AND OFFENDERS MAY BE PROSECUTED TO THE FULLEST EXTENT OF THE LAW.



Test Report

No. : CE/2007/24519

Date : 2007/03/05

Page : 1 of 3

LITTELFUSE INC.
800 E NORTHWEST HIGHWAY DES PLAINES, IL 60016



The following sample(s) was/were submitted and identified by/on behalf of the client as :

Sample Description : SOLDER
Style/Item No. : 692471
Facility : SUZHOU
Sample Receiving Date : 2007/2/26
Testing Period : 2007/2/26 TO 2007/03/05


=====

Test Requested : In accordance with the RoHS Directive 2002/95/EC, and its amendment directives.

Test Method : With reference to IEC 62321, Ed.1 111/54/CDV
Procedures for the Determination of Levels of Regulated Substances in Electrotechnical Products.

- (1) Determination of Cadmium by ICP-AES.
- (2) Determination of Lead by ICP-AES.
- (3) Determination of Mercury by ICP-AES.
- (4) Determination of Hexavalent Chromium for metallic samples by Spot test / Colorimetric Method.

Test Result(s) : Please refer to next page(s).


Daniel Yeh, M.R. / Operation Manager
Signed for and on behalf of
SGS TAIWAN LTD.



Test Report

No. : CE/2007/24519

Date : 2007/03/05

Page : 2 of 3

LITTELFUSE INC.
800 E NORTHWEST HIGHWAY DES PLAINES, IL 60016



Test results by chemical method (Unit: mg/kg)

Test Item (s):	Method (Refer to)	Result		MDL
		No.1	No.2	
Cadmium (Cd)	(1)	n.d.	--	2
Lead (Pb)	(2)	174	--	2
Mercury (Hg)	(3)	n.d.	--	2
Hexavalent Chromium Cr(VI) by Spot test / boiling water extraction	(4)	--	Negative	See Note 5

TEST PART DESCRIPTION:

NO.1 : SILVER COLORED METAL

NO.2 : PLATING LAYER OF SILVER COLORED METAL

Note : 1. mg/kg = ppm

2. n.d. = Not Detected

3. MDL = Method Detection Limit

4. "--" = Not Conducted

5. Spot-test:

Negative = Absence of Cr(VI) coating / surface layer,

Positive = Presence of Cr(VI) coating / surface layer;

(The tested sample should be further verified by boiling-water-extraction method if the spot test result cannot be confirmed.)

Boiling-water-extraction:

Negative = Absence of Cr(VI) coating / surface layer.

Positive = Presence of Cr(VI) coating / surface layer;

the detected concentration in boiling-water-extraction solution is equal or greater than 0.02 mg/kg with 50 cm² sample surface area.

Test Report

No. : CE/2007/24519 Date : 2007/03/05

Page : 3 of 3

LITTELFUSE INC.
800 E NORTHWEST HIGHWAY DES PLAINES, IL 60016



**** End of Report ****



Test Report

No. SH7031310/CHEM

Date: Apr. 2, 2007

Page 1 of 3

SUZHOU LITTELFUSE OVS., LTD.

6 XINGHAI STREET CHINA-SINGAPORE INDUSTRIAL PARK, SUZHOU, JIANG SU P.R.CHINA

The following sample(s) was/were submitted and identified by/on behalf of the client as:

Sample Name : ANAEROBIC ADHEV
SGS Ref No. : 10304486-1
Part No. : 087259
Supplier : PERMABOND

Sample Receiving Date : Mar.29, 2007
Testing Period : Mar.29-Apr.02, 2007

Test Requested : In accordance with the RoHS Directive 2002/95/EC, and its amendment directives

Test Method : (1) With reference to IEC 62321 Ed 111/54/CDV for Cadmium content.
Analysis was performed by ICP.
(2) With reference to IEC 62321 Ed 111/54/CDV for Lead content.
Analysis was performed by ICP.
(3) With reference to IEC 62321 Ed 111/54/CDV for Mercury content.
Analysis was performed by ICP.
(4) With reference to IEC 62321 Ed 111/54/CDV for Hexavalent Chromium by
Colorimetric Method.
(5) With reference to IEC 62321 Ed 111/54/CDV for PBBs / PBDEs content.
Analysis was performed by GC/MS.

Test Results : Please refer to next pages

Signed for and on behalf of
SGS-CSTC Chemical Laboratory


Ella Zhang
Sr. Section Head

Signed for and on behalf of
SGS-CSTC Chemical Laboratory


Sandy Hao
Lab Manager

This Test Report is issued by the Company subject to its General Conditions of Service printed overleaf or available on request and accessible at www.sgs.com. Attention is drawn to the limitations of liability, indemnification and jurisdictional issues defined therein. Unless otherwise stated the results shown in this test report refer only to the sample(s) tested. This test report cannot be reproduced, except in full, without prior written permission of the Company. Any unauthorized alteration, forgery or falsification of the content or appearance of this report is unlawful and offenders may be prosecuted to the fullest extent of the law.



10/F, 3rd Building, No. 889, Yishan Road, Shanghai, China 200233
中国·上海·宜山路889号3号楼10层 邮编: 200233

TEL: (86-21) 61402553
HL: (86-21) 61402594

TEL: (86-21) 64953679
HL: (86-21) 54500353

www.cn.sgs.com
cn.sgs.china@sgs.com

SHCHEM1133786

Test Report

No. SH7031310/CHEM

Date: Apr. 2, 2007

Page 2 of 3

Test results by chemical method (Unit: mg/kg)

Test Item(s):	Method (refer to)	1	MDL	RoHS Limit
Cadmium(Cd)	(1)	ND	2	100
Lead (Pb)	(2)	ND	2	1000
Mercury (Hg)	(3)	ND	2	1000
Hexavalent Chromium (CrVI)	(4)	ND	2	1000
Sum of PBBs	(5)	ND	-	1000
Monobromobiphenyl		ND	5	-
Dibromobiphenyl		ND	5	-
Tribromobiphenyl		ND	5	-
Tetrabromobiphenyl		ND	5	-
Hexabromobiphenyl		ND	5	-
Pentabromobiphenyl		ND	5	-
Heptabromobiphenyl		ND	5	-
Octabromobiphenyl		ND	5	-
Nonabromobiphenyl		ND	5	-
Decabromobiphenyl		ND	5	-
Sum of PBDEs (Note 4)		ND	-	1000
Monobromodiphenyl ether		ND	5	-
Dibromodiphenyl ether		ND	5	-
Tribromodiphenyl ether		ND	5	-
Tetrabromodiphenyl ether		ND	5	-
Pentabromodiphenyl ether		ND	5	-
Hexabromodiphenyl ether		ND	5	-
Heptabromodiphenyl ether		ND	5	-
Octabromodiphenyl ether		ND	5	-
Nonabromodiphenyl ether		ND	5	-
Decabromodiphenyl ether		ND	5	-
Sum of PBDEs (Mono to Deca)		ND	-	-

(Result shown is of the total weight of liquid sample)

Test Part Description:

1. Red liquid

Note:

- (1) mg/kg = ppm
- (2) ND = Not Detected
- (3) MDL = Method Detection Limit
- (4) Sum of Mono to NonaBDE & according to 2005/717/EC DecaBDE is exempt.
- (5) "-" = Not Regulated
- (6) The maximum permissible limit is quoted from the document 2005/618/EC amending RoHS directive 2002/95/EC

This Test Report is issued by the Company subject to its General Conditions of Service printed overleaf or available on request and accessible at www.cn.sgs.com. Attention is drawn to the limitations of liability, indemnification and jurisdictional issues defined therein. Unless otherwise stated the results shown in this test report refer only to the sample(s) tested. This test report cannot be reproduced, except in full, without prior written permission of the Company. Any unauthorized alteration, forgery or falsification of the content or appearance of this report is unlawful and offenders may be prosecuted to the fullest extent of the law.



10/F, 3rd Building, No. 888, Yishan Road, Shanghai, China 200233
中国·上海·宜山路888号3号楼10层 邮编: 200233

TEL: (86-21) 61402553
FAX: (86-21) 61402594

TEL: (86-21) 64953679
FAX: (86-21) 64500353

www.cn.sgs.com
cn.sgs.china@sgs.com

SHCHEM1133787

Sample photo:



SGS authenticate the photo on original report only

*** End of Report ***

This Test Report is issued by the Company subject to its General Conditions of Service printed overleaf or available on request and accessible at www.cn.sgs.com. Attention is drawn to the limitations of liability, indemnification and jurisdictional issues defined therein. Unless otherwise stated the results shown in this test report refer only to the sample(s) tested. This test report cannot be reproduced, except in full, without prior written permission of the Company. Any unauthorized alteration, forgery or falsification of the content or appearance of this report is unlawful and offenders may be prosecuted to the fullest extent of the law.



10/F, 3rd Building, No. 889, Yishan Road, Shanghai, China 200233
中国·上海·宜山路889号3号楼10层 邮编: 200233

TEL: (86-21) 61402553
HL: (86-21) 61402594

TEL: (86-21) 64953679
HL: (86-21) 54500353

www.cn.sgs.com
cn.sgs.china@sgs.com

SHCHEM1133788

Test Report

No. : CE/2007/21526

Date : 2007/02/12

Page : 1 of 3

LITTELFUSE INC.
800 E. NORTHWEST HWY. DES PLAINES, IL 60016



The following sample(s) was/were submitted and identified by/on behalf of the client as :

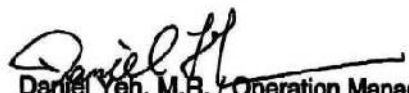
Sample Description : HMA
Style/Item No. : 087244
Facility : SUZHOU
Sample Receiving Date : 2007/02/07
Testing Period : 2007/02/07 TO 2007/02/12

Test Requested : In accordance with the RoHS Directive 2002/95/EC, and its amendment directives.

Test Method : With reference to IEC 62321, Ed.1 111/54/CDV
Procedures for the Determination of Levels of Regulated Substances in Electrotechnical Products.

- (1) Determination of Cadmium by ICP-AES.
- (2) Determination of Lead by ICP-AES.
- (3) Determination of Mercury by ICP-AES.
- (4) Determination of Hexavalent Chromium for non-metallic samples by UV/Vis Spectrometry.
- (5) Determination of PBB and PBDE by GC/MS.

Test Result(s) : Please refer to next page(s).


Daniel Yeh, M.R. / Operation Manager
Signed for and on behalf of
SGS TAIWAN LTD.



Test Report

No. : CE/2007/21526

Date : 2007/02/12

Page : 2 of 3

LITTELFUSE INC.
800 E. NORTHWEST HWY. DES PLAINES, IL 60016



Test results by chemical method (Unit: mg/kg)

Test Item (s):	Method (Refer to)	Result	MDL
		No.1	
Cadmium (Cd)	(1)	n.d.	2
Lead (Pb)	(2)	n.d.	2
Mercury (Hg)	(3)	n.d.	2
Hexavalent Chromium Cr(VI) by alkaline extraction	(4)	n.d.	2
Sum of PBBs	(5)	n.d.	-
Monobromobiphenyl		n.d.	5
Dibromobiphenyl		n.d.	5
Tribromobiphenyl		n.d.	5
Tetrabromobiphenyl		n.d.	5
Pentabromobiphenyl		n.d.	5
Hexabromobiphenyl		n.d.	5
Heptabromobiphenyl		n.d.	5
Octabromobiphenyl		n.d.	5
Nonabromobiphenyl		n.d.	5
Decabromobiphenyl		n.d.	5
Sum of PBDEs (Mono to Nona) (Note 4)		n.d.	-
Monobromobiphenyl ether		n.d.	5
Dibromobiphenyl ether		n.d.	5
Tribromobiphenyl ether		n.d.	5
Tetrabromobiphenyl ether		n.d.	5
Pentabromobiphenyl ether		n.d.	5
Hexabromobiphenyl ether		n.d.	5
Heptabromobiphenyl ether		n.d.	5
Octabromobiphenyl ether		n.d.	5
Nonabromobiphenyl ether		n.d.	5
Decabromobiphenyl ether		n.d.	5
Sum of PBDEs (Mono to Deca)		n.d.	-

TEST PART DESCRIPTION:

NO.1 : TRANSPARENT-ORANGE HMA

Note : 1. mg/kg = ppm

2. n.d. = Not Detected

3. MDL = Method Detection Limit

4. According to 2005/717/EC DecaBDE is exempt.

5. "-" = Not Regulated



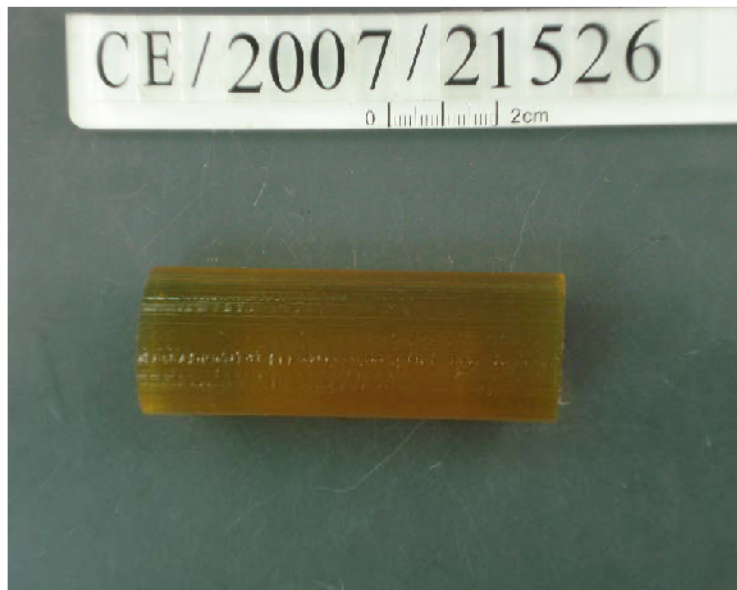
Test Report

No. : CE/2007/21526

Date : 2007/02/12

Page : 3 of 3

LITTELFUSE INC.
800 E. NORTHWEST HWY. DES PLAINES, IL 60016



** End of Report **

Test Report

No. : CE/2007/21532

Date : 2007/02/12

Page : 1 of 3

LITTELFUSE INC.
800 E. NORTHWEST HWY. DES PLAINES, IL 60016



The following sample(s) was/were submitted and identified by/on behalf of the client as :


Sample Description : YARN
Style/Item No. : 648106-001
Facility : PHILIPPINES
Sample Receiving Date : 2007/02/07
Testing Period : 2007/02/07 TO 2007/02/12

Test Requested : In accordance with the RoHS Directive 2002/95/EC, and its amendment directives.

Test Method : With reference to IEC 62321, Ed.1 111/54/CDV
Procedures for the Determination of Levels of Regulated Substances in Electrotechnical Products.

- (1) Determination of Cadmium by ICP-AES.
- (2) Determination of Lead by ICP-AES.
- (3) Determination of Mercury by ICP-AES.
- (4) Determination of Hexavalent Chromium for non-metallic samples by UV/Vis Spectrometry.
- (5) Determination of PBB and PBDE by GC/MS.

Test Result(s) : Please refer to next page(s).


Daniel Yeh, M.R. / Operation Manager
Signed for and on behalf of
SGS TAIWAN LTD.



Test Report

No. : CE/2007/21532

Date : 2007/02/12

Page : 2 of 3

LITTELFUSE INC.
800 E. NORTHWEST HWY. DES PLAINES, IL 60016



Test results by chemical method (Unit: mg/kg)

Test Item (s):	Method (Refer to)	Result	MDL
		No.1	
Cadmium (Cd)	(1)	n.d.	2
Lead (Pb)	(2)	n.d.	2
Mercury (Hg)	(3)	n.d.	2
Hexavalent Chromium Cr(VI) by alkaline extraction	(4)	n.d.	2
Sum of PBBs	(5)	n.d.	-
Monobromobiphenyl		n.d.	5
Dibromobiphenyl		n.d.	5
Tribromobiphenyl		n.d.	5
Tetrabromobiphenyl		n.d.	5
Pentabromobiphenyl		n.d.	5
Hexabromobiphenyl		n.d.	5
Heptabromobiphenyl		n.d.	5
Octabromobiphenyl		n.d.	5
Nonabromobiphenyl		n.d.	5
Decabromobiphenyl		n.d.	5
Sum of PBDEs (Mono to Nona) (Note 4)		n.d.	-
Monobromobiphenyl ether		n.d.	5
Dibromobiphenyl ether		n.d.	5
Tribromobiphenyl ether		n.d.	5
Tetrabromobiphenyl ether		n.d.	5
Pentabromobiphenyl ether		n.d.	5
Hexabromobiphenyl ether		n.d.	5
Heptabromobiphenyl ether		n.d.	5
Octabromobiphenyl ether		n.d.	5
Nonabromobiphenyl ether		n.d.	5
Decabromobiphenyl ether		n.d.	5
Sum of PBDEs (Mono to Deca)		n.d.	-

TEST PART DESCRIPTION:

NO.1 : WHITE YARN

Note : 1. mg/kg = ppm

2. n.d. = Not Detected

3. MDL = Method Detection Limit

4. According to 2005/717/EC DecaBDE is exempt.

5. "-" = Not Regulated

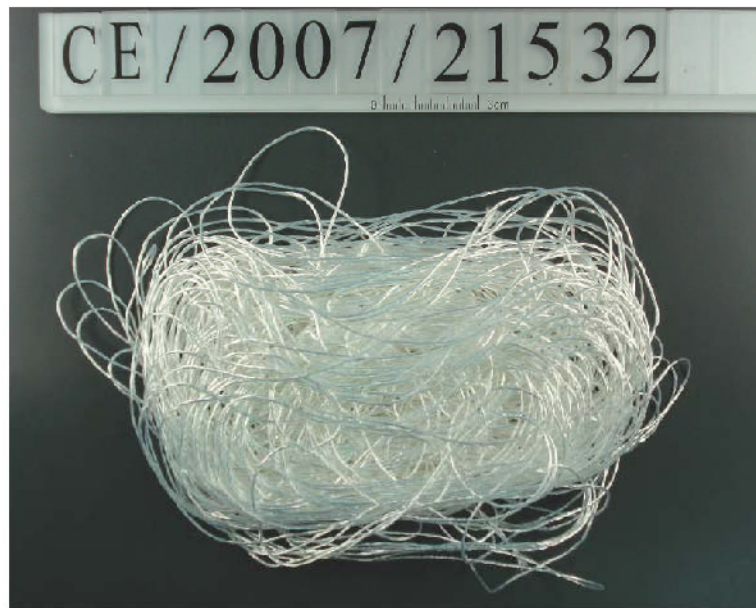
Test Report

No. : CE/2007/21532

Date : 2007/02/12

Page : 3 of 3

LITTELFUSE INC.
800 E. NORTHWEST HWY. DES PLAINES, IL 60016



** End of Report **



Test Report

No. : CE/2007/50886

Date : 2007/05/09

Page : 1 of 5

LITTELFUSE INC.
800 E. NORTHWEST HWY. DES PLAINES, IL 60016



The following sample(s) was/were submitted and identified by/on behalf of the client as :

Sample Description : FLUOSCEIN
Style/Item No. : 425209
Facility : SUZHOU
Sample Receiving Date : 2007/05/04
Testing Period : 2007/05/04 TO 2007/05/09


=====

Test Requested : In accordance with the RoHS Directive 2002/95/EC, and its amendment directives.

Test Method : With reference to IEC 62321, Ed.1 111/54/CDV
Procedures for the Determination of Levels of Regulated Substances in Electrotechnical Products.

- (1) Determination of Cadmium by ICP-AES.
- (2) Determination of Lead by ICP-AES.
- (3) Determination of Mercury by ICP-AES.
- (4) Determination of Hexavalent Chromium for non-metallic samples by UV/Vis Spectrometry.
- (5) Determination of PBB and PBDE by GC/MS.

Test Result(s) : Please refer to next page(s).


Daniel Yeh, M.R. / Operation Manager
Signed for and on behalf of
SGS TAIWAN LTD.

Test Report

No. : CE/2007/50886

Date : 2007/05/09

Page : 2 of 5

LITTELFUSE INC.
800 E. NORTHWEST HWY. DES PLAINES, IL 60016



Test results by chemical method (Unit: mg/kg)

Test Item (s):	Method (Refer to)	Result	MDL
		No.1	
Cadmium (Cd)	(1)	n.d.	2
Lead (Pb)	(2)	n.d.	2
Mercury (Hg)	(3)	n.d.	2
Hexavalent Chromium Cr(VI) by alkaline extraction	(4)	n.d.	2
Sum of PBBs	(5)	n.d.	-
Monobromobiphenyl		n.d.	5
Dibromobiphenyl		n.d.	5
Tribromobiphenyl		n.d.	5
Tetrabromobiphenyl		n.d.	5
Pentabromobiphenyl		n.d.	5
Hexabromobiphenyl		n.d.	5
Heptabromobiphenyl		n.d.	5
Octabromobiphenyl		n.d.	5
Nonabromobiphenyl		n.d.	5
Decabromobiphenyl		n.d.	5
Sum of PBDEs (Mono to Nona) (Note 4)		n.d.	-
Monobromobiphenyl ether		n.d.	5
Dibromobiphenyl ether		n.d.	5
Tribromobiphenyl ether		n.d.	5
Tetrabromobiphenyl ether		n.d.	5
Pentabromobiphenyl ether		n.d.	5
Hexabromobiphenyl ether		n.d.	5
Heptabromobiphenyl ether		n.d.	5
Octabromobiphenyl ether		n.d.	5
Nonabromobiphenyl ether		n.d.	5
Decabromobiphenyl ether		n.d.	5
Sum of PBDEs (Mono to Deca)		n.d.	-

TEST PART DESCRIPTION:

NO.1 : BROWN POWDER

- Note :
1. mg/kg = ppm
 2. n.d. = Not Detected
 3. MDL = Method Detection Limit
 4. According to 2005/717/EC DecaBDE is exempt.
 5. "-" = Not Regulated

Test Report

No. : CE/2007/50886

Date : 2007/05/09

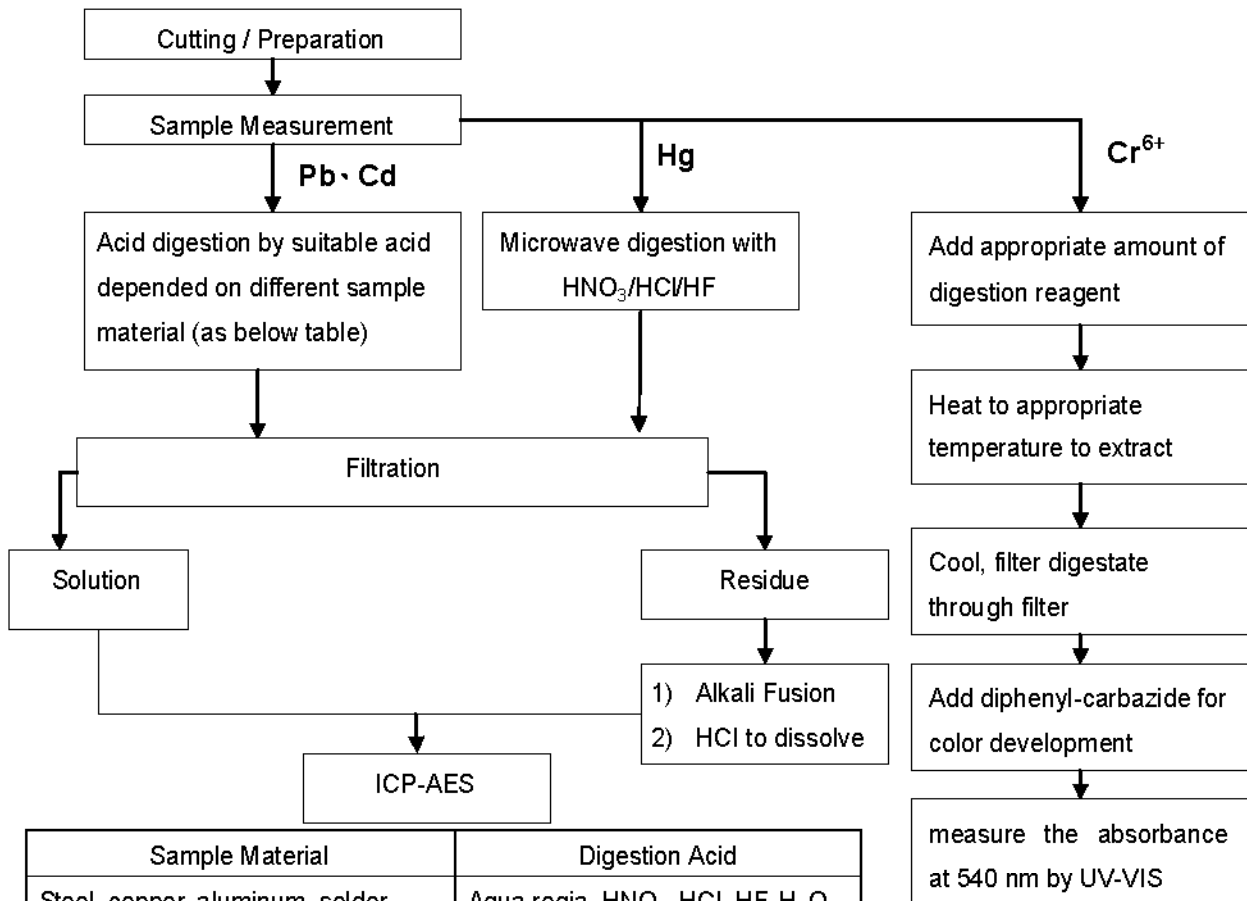
Page : 3 of 5

LITTELFUSE INC.

800 E. NORTHWEST HWY. DES PLAINES, IL 60016



- 1) These samples were dissolved totally by pre-conditioning method according to below flow chart.
(Cr6+ test method excluded)
- 2) Name of the person who made measurement: Troy Chang
- 3) Name of the person in charge of measurement: Daniel Yeh



Sample Material	Digestion Acid
Steel, copper, aluminum, solder	Aqua regia, HNO ₃ , HCl, HF, H ₂ O ₂
Glass	HNO ₃ /HF
Gold, platinum, palladium, ceramic	Aqua regia
Silver	HNO ₃
Plastic	H ₂ SO ₄ , H ₂ O ₂ , HNO ₃ , HCl
Others	Any acid to total digestion

Test Report

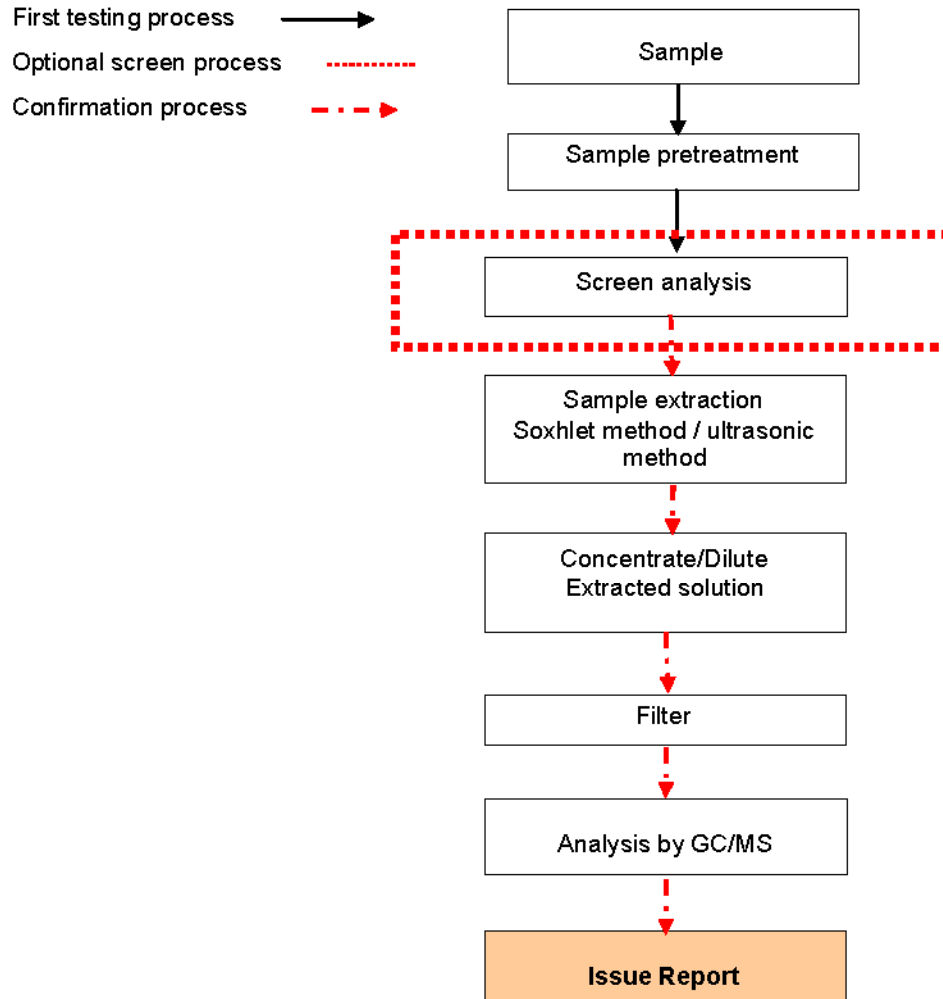
No. : CE/2007/50886 Date : 2007/05/09

Page : 4 of 5

LITTELFUSE INC.
800 E. NORTHWEST HWY. DES PLAINES, IL 60016



PBB/PBDE analytical FLOW CHART



Test Report

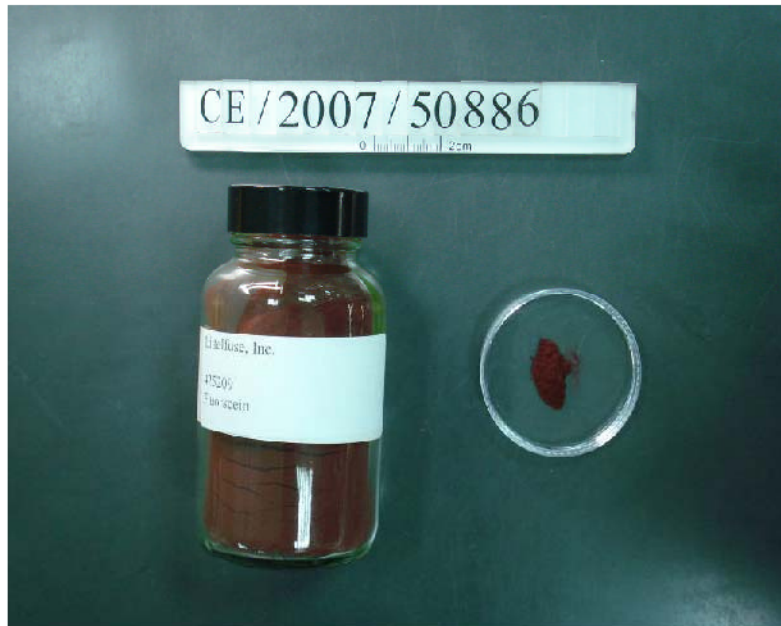
No. : CE/2007/50886

Date : 2007/05/09

Page : 5 of 5

LITTELFUSE INC.

800 E. NORTHWEST HWY. DES PLAINES, IL 60016



**** End of Report ****



Test Report

No. : CE/2007/21529

Date : 2007/02/12

Page : 1 of 3

LITTELFUSE INC.
800 E. NORTHWEST HWY. DES PLAINES, IL 60016



The following sample(s) was/were submitted and identified by/on behalf of the client as :

Sample Description : SAND
Style/Item No. : 090187
Facility : SUZHOU
Sample Receiving Date : 2007/02/07
Testing Period : 2007/02/07 TO 2007/02/12

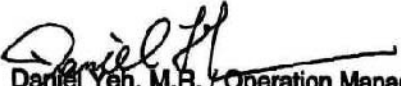
=====

Test Requested : In accordance with the RoHS Directive 2002/95/EC, and its amendment directives.

Test Method : With reference to IEC 62321, Ed.1 111/54/CDV
Procedures for the Determination of Levels of Regulated Substances in Electrotechnical Products.

- (1) Determination of Cadmium by ICP-AES.
- (2) Determination of Lead by ICP-AES.
- (3) Determination of Mercury by ICP-AES.
- (4) Determination of Hexavalent Chromium for non-metallic samples by UV/Vis Spectrometry.
- (5) Determination of PBB and PBDE by GC/MS.

Test Result(s) : Please refer to next page(s).


Daniel Yeh, M.R. / Operation Manager
Signed for and on behalf of
SGS TAIWAN LTD.



Test Report

No. : CE/2007/21529

Date : 2007/02/12

Page : 2 of 3

LITTELFUSE INC.
800 E. NORTHWEST HWY. DES PLAINES, IL 60016



Test results by chemical method (Unit: mg/kg)

Test Item (s):	Method (Refer to)	Result	MDL
		No.1	
Cadmium (Cd)	(1)	n.d.	2
Lead (Pb)	(2)	n.d.	2
Mercury (Hg)	(3)	n.d.	2
Hexavalent Chromium Cr(VI) by alkaline extraction	(4)	n.d.	2
Sum of PBBs	(5)	n.d.	-
Monobromobiphenyl		n.d.	5
Dibromobiphenyl		n.d.	5
Tribromobiphenyl		n.d.	5
Tetrabromobiphenyl		n.d.	5
Pentabromobiphenyl		n.d.	5
Hexabromobiphenyl		n.d.	5
Heptabromobiphenyl		n.d.	5
Octabromobiphenyl		n.d.	5
Nonabromobiphenyl		n.d.	5
Decabromobiphenyl		n.d.	5
Sum of PBDEs (Mono to Nona) (Note 4)		n.d.	-
Monobromobiphenyl ether		n.d.	5
Dibromobiphenyl ether		n.d.	5
Tribromobiphenyl ether		n.d.	5
Tetrabromobiphenyl ether		n.d.	5
Pentabromobiphenyl ether		n.d.	5
Hexabromobiphenyl ether		n.d.	5
Heptabromobiphenyl ether		n.d.	5
Octabromobiphenyl ether		n.d.	5
Nonabromobiphenyl ether		n.d.	5
Decabromobiphenyl ether		n.d.	5
Sum of PBDEs (Mono to Deca)		n.d.	-

TEST PART DESCRIPTION:

NO.1 : WHITE POWDER

Note : 1. mg/kg = ppm

2. n.d. = Not Detected

3. MDL = Method Detection Limit

4. According to 2005/717/EC DecaBDE is exempt.

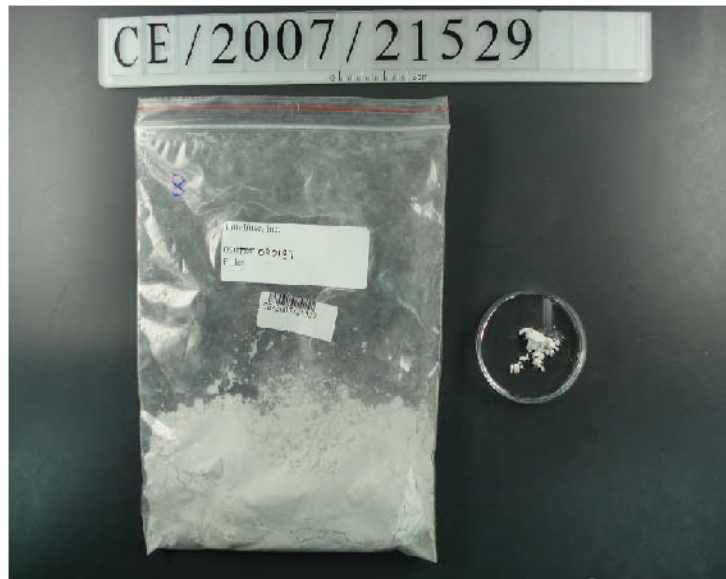
5. "-" = Not Regulated

Test Report

No. : CE/2007/21529 Date : 2007/02/12

Page : 3 of 3

LITTELFUSE INC.
800 E. NORTHWEST HWY. DES PLAINES, IL 60016



** End of Report **