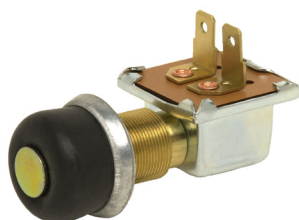


10A PUSHBUTTON SWITCHES



9023



90043 with rubber cap

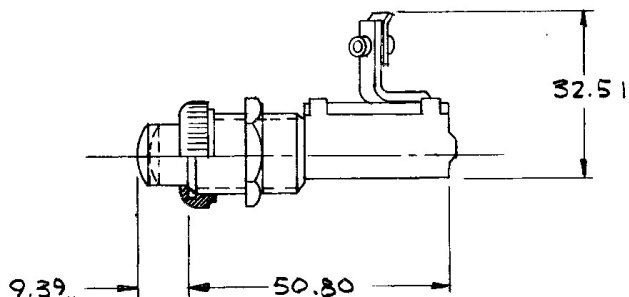
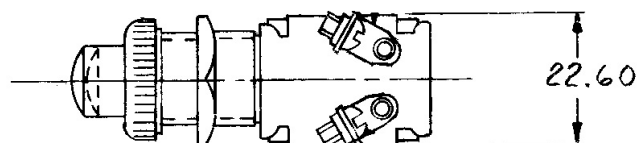


90043-07

Description

Normally On or Normally Off

Specifications	
Housing	Rectangular plated steel
Circuitry	Off - On, Normally Off. On with button depressed, spring return to Off, or Off - On, Normally On. Off with button depressed, spring return to On
Rating	10A at 12V DC, except where noted
Contacts	Silver
Button & facenut	Chrome-plated



9023 dimensions

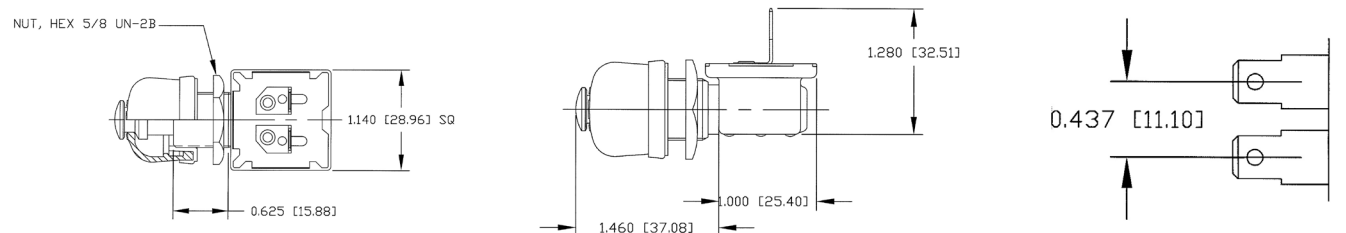
10A PUSHBUTTON SWITCHES

Ordering information

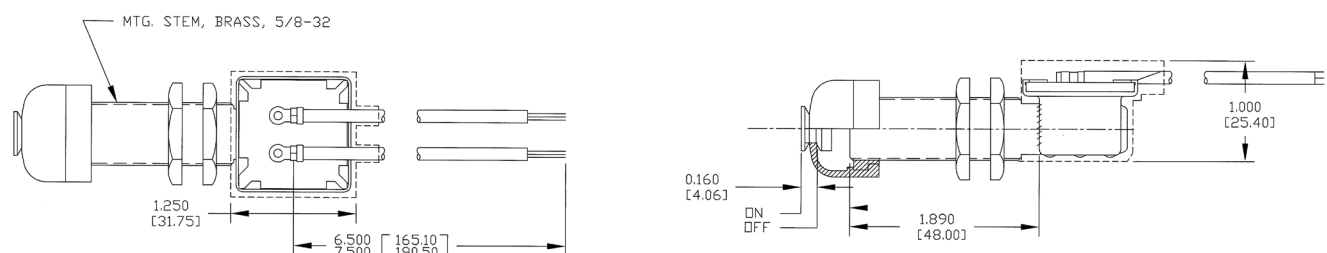
Part No.	Type	Mounting Stem	Terminals	Notes
9023	SPST Normally Off	5/8"-32 0.87"L (22.1mm)	2 screws	15A resistive, 10A inductive at 12V DC, 8A resistive, 5A inductive at 24V DC
9023-BX				
9023-09	<i>SPST Normally Off</i>	<i>5/8"-32 0.87"L (22.1mm)</i>	<i>2 screws</i>	<i>15A resistive, 10A inductive at 12V DC, 8A resistive, 5A inductive at 24V DC. Screw-on black rubber cap 83280-03</i>
9044	SPST Normally Off	5/8"-32 1.06"L (26.9mm)	2 screws	Gasket seal in case
9044-BX				
9115	SPST Normally On	5/8"-32 7/8" L (22.2mm)	2 screw	
9115-BX				
9238	SPST Normally Off	5/8"-32 0.87"L (22.1mm)	2 blades	15A resistive, 10A inductive at 12V DC, 8A resistive, 5A inductive at 24V DC
9238-BX				
9238-01	<i>SPST Normally Off</i>	<i>5/8"-32 0.87"L (22.1mm)</i>	<i>2 blades</i>	<i>15A resistive, 10A inductive at 12V DC, 8A resistive, 5A inductive at 24V DC. Screw-on black rubber cap 83280-03</i>
90002-01	<i>SPST Normally On</i>	<i>5/8"-32 1 1/16" L (26.9mm)</i>	<i>2 screw</i>	<i>Weather-resistant and dust-resistant. Gasket-sealed case and O-ring in stem</i>
90043	SPST Normally On	5/8"-32 0.625" L (15.9mm)	2 blades accept Delphi 2977647	PVC-coated. Gasket seal in case. Steel plunger protrudes through the snap-on black rubber cap
90043-BX				
90043-07	SPST Normally On	5/8"-32 0.625" L (15.9mm)	2 7" wire leads (177.8mm)	PVC-coated
90043-07-BX				
91126	SPST Normally On	7/16"-20 0.44" L (11.2mm)	2 7" wire leads (177.8mm)	PVC-coated. Steel button 0.38" (9.7mm) diameter
91126-BX				

Items in italics are available by Special Order only

Part numbers without suffix are supplied bulk; numbers with BX suffix are individually boxed



90043 dimensions



90043-07 dimensions