



ICP Test Report Certification Packet

Company Name: Littelfuse, Inc.

Product Type: Metal Oxide Varistors

Product Series: TMOV/ iTMOV Series RoHS Compliant Models

Issue Date: May 25, 2011

It is hereby certified by Littelfuse, Inc. that there is neither RoHS (EU Directive 2002/95/EC)-restricted substance nor such use, for materials to be used for unit parts, for packing/packaging materials, and for additives and the like in the manufacturing processes.

In addition, it is hereby reported to you that the parts and sub-materials, the materials to be used for unit parts, the packing/packaging materials, and the additives and the like in the manufacturing processes, are all composed of the following components.

Issued by: *David Huang*

< DGLF Environmental, Health & Safety Engineer >

(1) Parts, sub-materials and unit parts

This document covers Metal Oxide Varistors T MOV/ iTMOV series
RoHS-Compliant models manufactured by Littelfuse, Inc.

Please see Table 1 for raw materials used.

(2) The ICP data on all measurable substances

Please see appropriate pages as identified in Table 1

Remarks :

Table 1: List of Raw Materials covered by this report

Total Parts	P/N	Raw Material Description	Page
1	N/A	Black disc, type including DD and DM	3-12
2	N/A	Silver Paste	13-22
3	N/A	Sold Paste	23-30
4	N/A	Sold Wire	31-39
5	N/A	Tinned Copper Wire	40-49
6	N/A	Hotmelt	50-56
7	N/A	Alumina Insulator	57-61
8	N/A	Epoxy Resin, Red	62-65

TEST REPORT

NUMBER: SZHH0049776103

APPLICANT: LITTELFUSE, INC.
8755 WEST HIGGINS ROAD SUITE 500
CHICAGO IL 60631 USA

DATE: Jun 19, 2010

ATTN: KRISTEEN BACILA/ARSENIO CESISTA JR.

SAMPLE DESCRIPTION:

ONE (1) SUBMITTED SAMPLE SAID TO BE **DD BLACK DISC.**

TESTED COMPONENT : GREY SOLID.

PART DESCRIPTION : DD BLACK DISC.

DATE SAMPLE RECEIVED : JUN 12, 2010.

DATE TEST STARTED : JUN 12, 2010.



TESTS CONDUCTED:

AS REQUESTED BY THE APPLICANT, FOR DETAILS REFER TO ATTACHED PAGE(S)

AUTHORIZED BY:
FOR INTERTEK TESTING SERVICES
SHENZHEN LTD.

A handwritten signature in black ink, followed by a red circular stamp. The stamp contains the text 'Intertek Testing Services Shenzhen Ltd.' and 'Intertek Testing Services Shenzhen Ltd.' in Chinese characters.

KARBON M.Y. WU
GENERAL MANAGER

**TEST REPORT**

NUMBER: SZHH0049776103

TESTS CONDUCTED

RoHS CHEMICAL TEST

(A) TEST RESULT SUMMARY:

TESTING ITEM	RESULT
CADMIUM (Cd) CONTENT (mg/kg)	ND (<2)
LEAD (Pb) CONTENT (mg/kg)	ND (<2)
MERCURY (Hg) CONTENT (mg/kg)	ND (<2)
CHROMIUM (VI)(Cr ⁶⁺) CONTENT (mg/kg)	15
POLYBROMINATED BIPHENYLS (PBBs) (mg/kg)	
MONOBROMOBIPHENYL (MonoBB)	ND (<5)
DIBROMOBIPHENYL (DiBB)	ND (<5)
TRIBROMOBIPHENYL (TriBB)	ND (<5)
TETRABROMOBIPHENYL (TetraBB)	ND (<5)
PENTABROMOBIPHENYL (PentaBB)	ND (<5)
HEXABROMOBIPHENYL (HexaBB)	ND (<5)
HEPTABROMOBIPHENYL (HeptaBB)	ND (<5)
OCTABROMOBIPHENYL (OctaBB)	ND (<5)
NONABROMOBIPHENYL (NonaBB)	ND (<5)
DECABROMOBIPHENYL (DecaBB)	ND (<5)
POLYBROMINATED DIPHENYL ETHERS (PBDEs) (mg/kg)	
MONOBROMODIPHENYL ETHER (MonoBDE)	ND (<5)
DIBROMODIPHENYL ETHER (DiBDE)	ND (<5)
TRIBROMODIPHENYL ETHER (TriBDE)	ND (<5)
TETRABROMODIPHENYL ETHER (TetraBDE)	ND (<5)
PENTABROMODIPHENYL ETHER (PentaBDE)	ND (<5)
HEXABROMODIPHENYL ETHER (HexaBDE)	ND (<5)
HEPTABROMODIPHENYL ETHER (HeptaBDE)	ND (<5)
OCTABROMODIPHENYL ETHER (OctaBDE)	ND (<5)
NONABROMODIPHENYL ETHER (NonaBDE)	ND (<5)
DECABROMODIPHENYL ETHER (DecaBDE)	ND (<5)

CHEMIST: LV LINNA

mg/kg = MILLIGRAM PER KILOGRAM = ppm

< = LESS THAN

ND = NOT DETECTED

**TEST REPORT**

NUMBER: SZHH0049776103

TESTS CONDUCTED

(B) RoHS REQUIREMENT:

RESTRICTED SUBSTANCES	LIMITS
CADMIUM (Cd)	0.01% (100 ppm)
LEAD (Pb)	0.1% (1000 ppm)
MERCURY (Hg)	0.1% (1000 ppm)
CHROMIUM (VI) (Cr ⁶⁺)	0.1% (1000 ppm)
POLYBROMINATED BIPHENYLS (PBBs)	0.1% (1000 ppm)
POLYBROMINATED DIPHENYL ETHERS (PBDEs)	0.1% (1000 ppm)

THE ABOVE LIMITS WERE QUOTED FROM 2002/95/EC AND AMENDMENT 2005/618/EC FOR HOMOGENEOUS MATERIAL.

(C) TEST METHOD:

TESTING ITEM	TESTING METHOD	REPORTING LIMIT
CADMIUM (Cd) CONTENT	WITH REFERENCE TO IEC 62321 EDITION 1.0:2008, BY ACID DIGESTION AND DETERMINED BY ICP - OES	2 mg/kg
LEAD (Pb) CONTENT	WITH REFERENCE TO IEC 62321 EDITION 1.0:2008, BY ACID DIGESTION AND DETERMINED BY ICP - OES	2 mg/kg
MERCURY (Hg) CONTENT	WITH REFERENCE TO IEC 62321 EDITION 1.0:2008, BY ACID DIGESTION AND DETERMINED BY ICP - OES	2 mg/kg
CHROMIUM (VI) (Cr ⁶⁺) CONTENT	WITH REFERENCE TO IEC 62321 EDITION 1.0:2008, BY ALKALINE DIGESTION AND DETERMINED BY UV-VIS SPECTROPHOTOMETER	1 mg/kg
POLYBROMINATED BIPHENYLS (PBBs) & POLYBROMINATED DIPHENYL ETHERS (PBDEs)	WITH REFERENCE TO IEC 62321 EDITION 1.0:2008, BY SOLVENT EXTRACTION AND DETERMINED BY GC/MS AND FURTHER HPLC CONFIRMATION WHEN NECESSARY	5 mg/kg

DATE SAMPLE RECEIVED : JUN 12, 2010

TESTING PERIOD : JUN 12, 2010 TO JUN 17, 2010

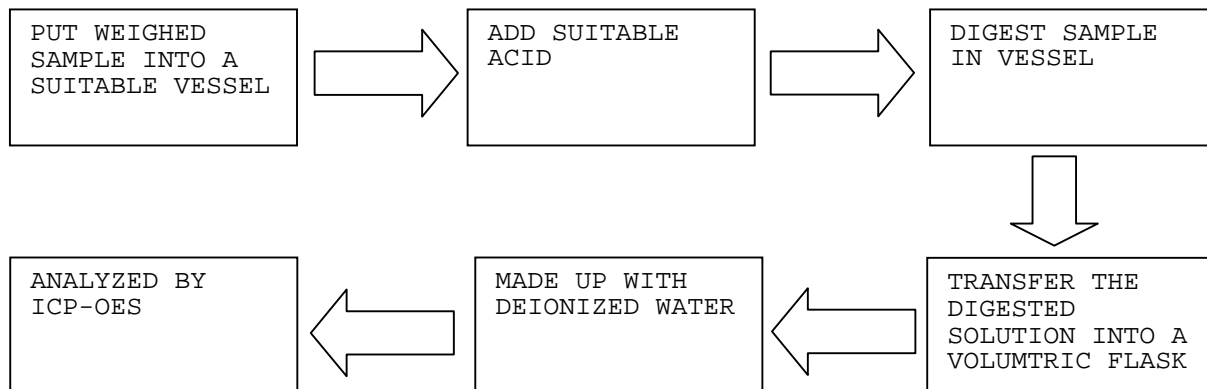
TEST REPORT

NUMBER: SZHH0049776103

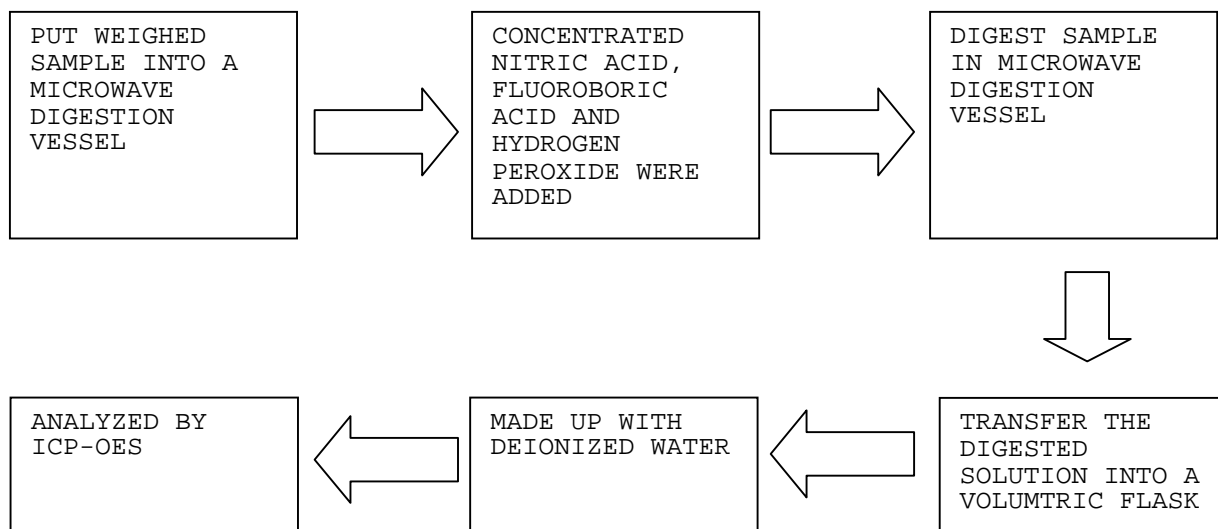
TESTS CONDUCTED

(D) MEASUREMENT FLOWCHART:

1. TEST FOR Cd/Pb CONTENTS



2. TEST FOR Hg CONTENT

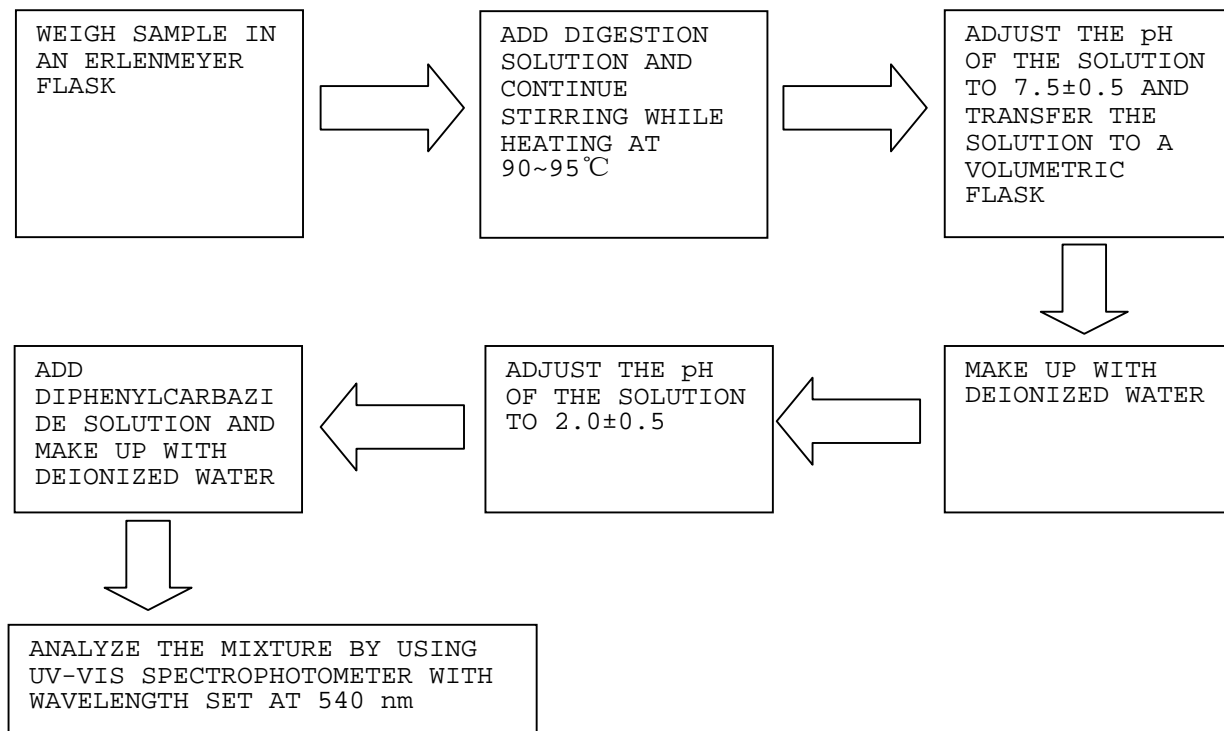


TEST REPORT

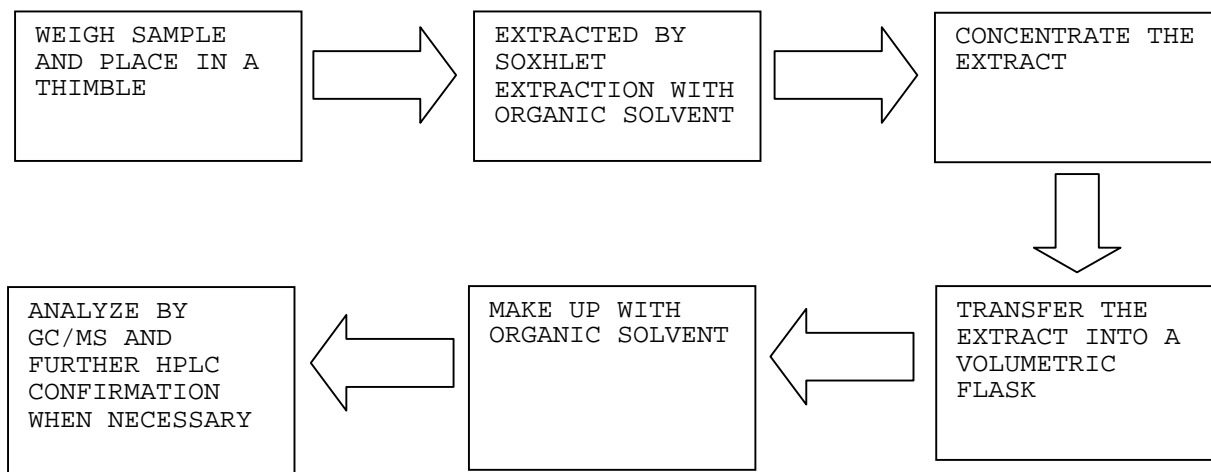
NUMBER: SZHH0049776103

TESTS CONDUCTED

3. TEST FOR CHROMIUM (VI) (Cr^{6+}) CONTENT (ALKALINE DIGESTION)



4. TEST FOR PBBs/PBDEs CONTENTS



END OF REPORT



TEST REPORT

NUMBER: SZHH0049776104

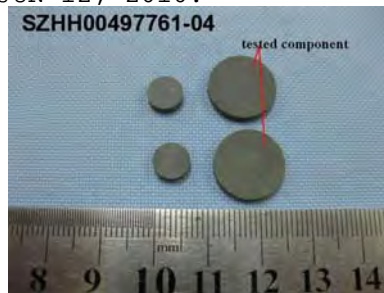
APPLICANT: LITTELFUSE, INC.
8755 WEST HIGGINS ROAD SUITE 500
CHICAGO IL 60631 USA

DATE: Jun 19, 2010

ATTN: KRISTEEN BACILA/ARSENIO CESISTA JR.

SAMPLE DESCRIPTION:

ONE (1) SUBMITTED SAMPLE SAID TO BE **DM BLACK DISC**.
TESTED COMPONENT : GREY SOLID.
PART DESCRIPTION : DM BLACK DISC.
DATE SAMPLE RECEIVED : JUN 12, 2010.
DATE TEST STARTED : JUN 12, 2010.



TESTS CONDUCTED:

AS REQUESTED BY THE APPLICANT, FOR DETAILS REFER TO ATTACHED PAGE(S)

AUTHORIZED BY:
FOR INTERTEK TESTING SERVICES
SHENZHEN LTD.

KARBON M.Y. WU
GENERAL MANAGER

**TEST REPORT**

NUMBER: SZHH0049776104

TESTS CONDUCTED

RoHS CHEMICAL TEST

(A) TEST RESULT SUMMARY:

TESTING ITEM	RESULT
CADMIUM (Cd) CONTENT (mg/kg)	ND (<2)
LEAD (Pb) CONTENT (mg/kg)	ND (<2)
MERCURY (Hg) CONTENT (mg/kg)	ND (<2)
CHROMIUM (VI)(Cr ⁶⁺) CONTENT (mg/kg)	23
POLYBROMINATED BIPHENYLS (PBBs) (mg/kg)	
MONOBROMOBIPHENYL (MonoBB)	ND (<5)
DIBROMOBIPHENYL (DiBB)	ND (<5)
TRIBROMOBIPHENYL (TriBB)	ND (<5)
TETRABROMOBIPHENYL (TetraBB)	ND (<5)
PENTABROMOBIPHENYL (PentaBB)	ND (<5)
HEXABROMOBIPHENYL (HexaBB)	ND (<5)
HEPTABROMOBIPHENYL (HeptaBB)	ND (<5)
OCTABROMOBIPHENYL (OctaBB)	ND (<5)
NONABROMOBIPHENYL (NonaBB)	ND (<5)
DECABROMOBIPHENYL (DecaBB)	ND (<5)
POLYBROMINATED DIPHENYL ETHERS (PBDEs) (mg/kg)	
MONOBROMODIPHENYL ETHER (MonoBDE)	ND (<5)
DIBROMODIPHENYL ETHER (DiBDE)	ND (<5)
TRIBROMODIPHENYL ETHER (TriBDE)	ND (<5)
TETRABROMODIPHENYL ETHER (TetraBDE)	ND (<5)
PENTABROMODIPHENYL ETHER (PentaBDE)	ND (<5)
HEXABROMODIPHENYL ETHER (HexaBDE)	ND (<5)
HEPTABROMODIPHENYL ETHER (HeptaBDE)	ND (<5)
OCTABROMODIPHENYL ETHER (OctaBDE)	ND (<5)
NONABROMODIPHENYL ETHER (NonaBDE)	ND (<5)
DECABROMODIPHENYL ETHER (DecaBDE)	ND (<5)

CHEMIST: LV LINNA

mg/kg = MILLIGRAM PER KILOGRAM = ppm

< = LESS THAN

ND = NOT DETECTED

**TEST REPORT**

NUMBER: SZHH0049776104

TESTS CONDUCTED

(B) RoHS REQUIREMENT:

RESTRICTED SUBSTANCES	LIMITS
CADMIUM (Cd)	0.01% (100 ppm)
LEAD (Pb)	0.1% (1000 ppm)
MERCURY (Hg)	0.1% (1000 ppm)
CHROMIUM (VI) (Cr ⁶⁺)	0.1% (1000 ppm)
POLYBROMINATED BIPHENYLS (PBBs)	0.1% (1000 ppm)
POLYBROMINATED DIPHENYL ETHERS (PBDEs)	0.1% (1000 ppm)

THE ABOVE LIMITS WERE QUOTED FROM 2002/95/EC AND AMENDMENT 2005/618/EC FOR HOMOGENEOUS MATERIAL.

(C) TEST METHOD:

TESTING ITEM	TESTING METHOD	REPORTING LIMIT
CADMIUM (Cd) CONTENT	WITH REFERENCE TO IEC 62321 EDITION 1.0:2008, BY ACID DIGESTION AND DETERMINED BY ICP - OES	2 mg/kg
LEAD (Pb) CONTENT	WITH REFERENCE TO IEC 62321 EDITION 1.0:2008, BY ACID DIGESTION AND DETERMINED BY ICP - OES	2 mg/kg
MERCURY (Hg) CONTENT	WITH REFERENCE TO IEC 62321 EDITION 1.0:2008, BY ACID DIGESTION AND DETERMINED BY ICP - OES	2 mg/kg
CHROMIUM (VI) (Cr ⁶⁺) CONTENT	WITH REFERENCE TO IEC 62321 EDITION 1.0:2008, BY ALKALINE DIGESTION AND DETERMINED BY UV-VIS SPECTROPHOTOMETER	1 mg/kg
POLYBROMINATED BIPHENYLS (PBBs) & POLYBROMINATED DIPHENYL ETHERS (PBDEs)	WITH REFERENCE TO IEC 62321 EDITION 1.0:2008, BY SOLVENT EXTRACTION AND DETERMINED BY GC/MS AND FURTHER HPLC CONFIRMATION WHEN NECESSARY	5 mg/kg

DATE SAMPLE RECEIVED : JUN 12, 2010

TESTING PERIOD : JUN 12, 2010 TO JUN 17, 2010

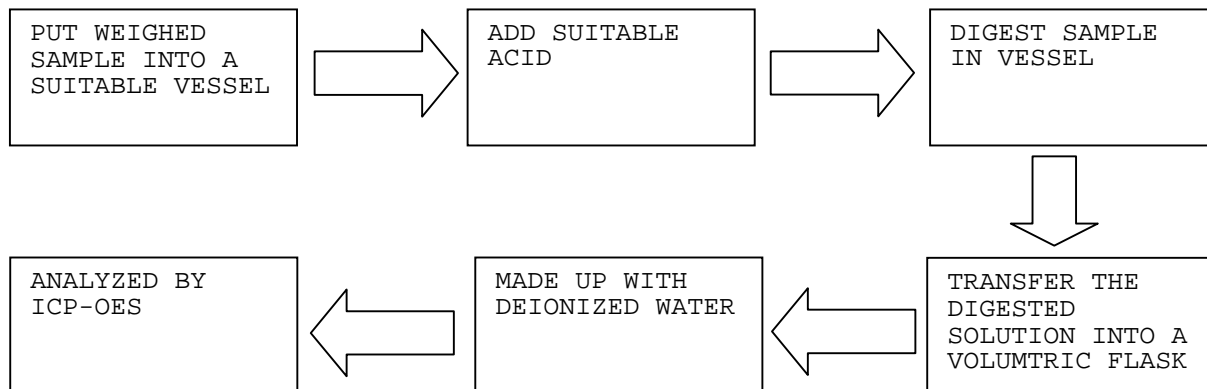
TEST REPORT

NUMBER: SZHH0049776104

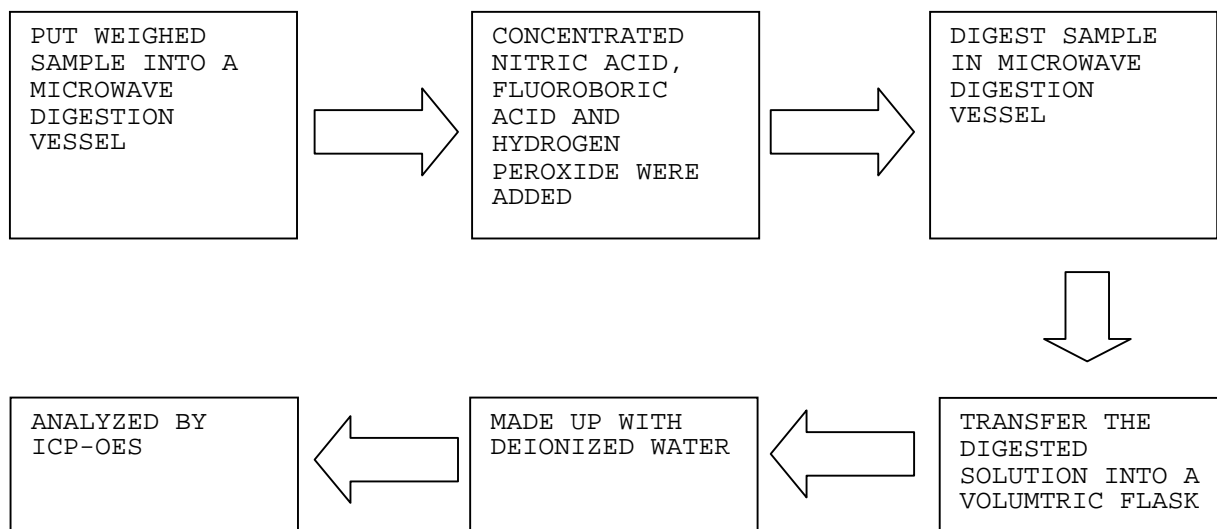
TESTS CONDUCTED

(D) MEASUREMENT FLOWCHART:

1. TEST FOR Cd/Pb CONTENTS



2. TEST FOR Hg CONTENT

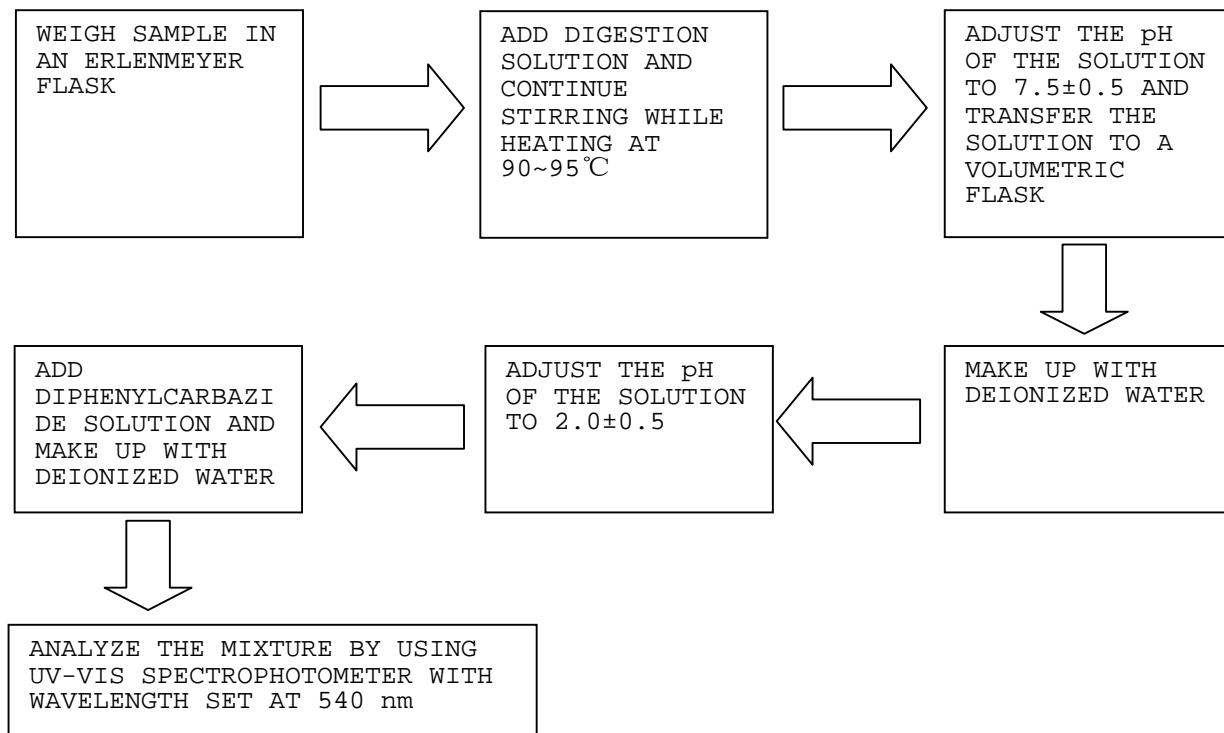


TEST REPORT

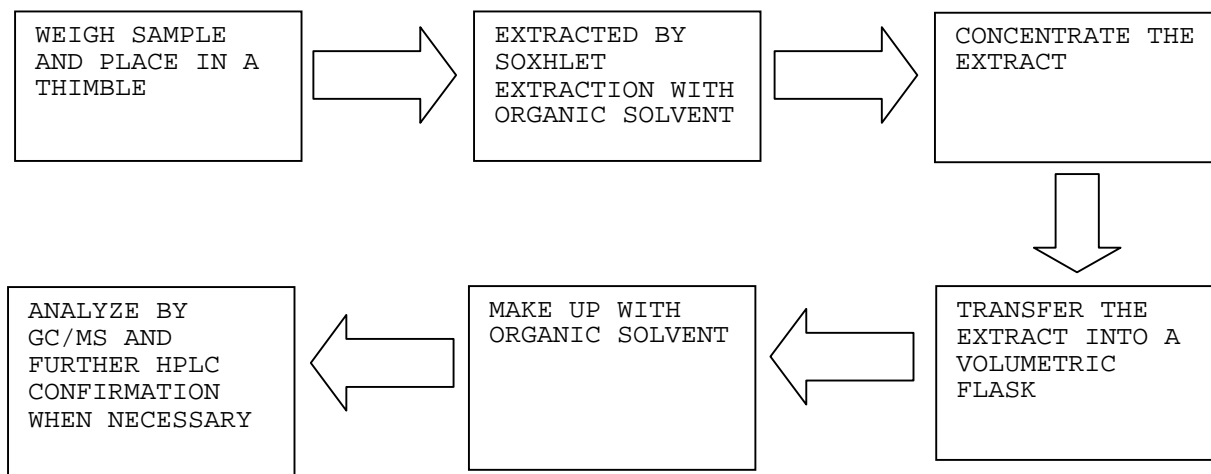
NUMBER: SZHH0049776104

TESTS CONDUCTED

3. TEST FOR CHROMIUM (VI) (Cr^{6+}) CONTENT (ALKALINE DIGESTION)



4. TEST FOR PBBs/PBDEs CONTENTS



END OF REPORT

測試報告

Test Report

號碼(No.) : CE/2011/21056 日期(Date) : 2011/02/17 頁數(Page) : 1 of 10

新日本化金株式會社

SHIN-NIHON KAKIN CO., LTD.

東京都板橋區宮本町33番7號

33-7, MIYAMOTO-CHO, ITABASHI-KU, TOKYO, JAPAN



以下測試樣品係由客戶送樣，且由客戶聲稱並經客戶確認如下 (The following samples was/were submitted and identified by/on behalf of the client as):

樣品名稱(Sample Description) : 銀膏 (SILVER PASTE)
樣品型號(Style/Item No.) : SP-A6PL
材料批號(Lot No.) : 01207
收件日期(Sample Receiving Date) : 2011/2/10
測試期間(Testing Period) : 2011/2/10 TO 2011/02/17

測試結果(Test Results) : 請見下一頁 (Please refer to next pages).


Chenyu Kung / Operation Manager
Signed for and on behalf of
SGS TAIWAN LTD.
Chemical Laboratory – Taipei

Unless otherwise stated the results shown in this test report refer only to the sample(s) tested. This test report cannot be reproduced, except in full, without prior written permission of the Company. 除非另有說明，此報告結果僅對測試的樣品負責。本報告未經本公司書面許可，不可部份複製。

This document is issued by the Company subject to its General Conditions of Service printed overleaf, available on request or accessible at www.sgs.com/terms_and_conditions.htm and for electronic format documents, subject to Terms and Conditions for Electronic Documents at www.sgs.com/terms_e-document.htm. Attention is drawn to the limitation of liability, indemnification and jurisdiction issues defined therein. Any holder of this document is advised that information contained hereon reflects the Company's findings at the time of its intervention only and within the limits of Client's instructions, if any. The Company's sole responsibility is to its Client and this document does not exonerate parties to a transaction from exercising all their rights and obligations under the transaction documents. This document cannot be reproduced except in full, without prior written approval of the Company. Any unauthorized alteration, forgery or falsification of the content or appearance of this document is unlawful and offenders may be prosecuted to the fullest extent of the law.

台灣檢驗科技股份有限公司 Chemical-Taipei 33 WuChyuan Road, Wuku Industrial Zone, New Taipei City, Taiwan / 新北市五股工業區五柳路33號 +886 (02)2299 3279 f + 886 (02)2299 3237 www.sgs.com

Member of the SGS Group (SGS SA)

測試報告

Test Report

號碼(No.) : CE/2011/21056 日期(Date) : 2011/02/17 頁數(Page) : 2 of 10

新日本化金株式會社

SHIN-NIHON KAKIN CO., LTD.

東京都板橋區宮本町33番7號

33-7, MIYAMOTO-CHO, ITABASHI-KU, TOKYO, JAPAN



測試結果(Test Results)

測試部位(PART NAME)No.1 : 墨綠色膏狀 (BLACKISH GREEN PASTE)

測試項目 (Test Items)	單位 (Unit)	測試方法 (Method)	方法偵測 極限值 (MDL)	結果 (Result)
				No.1
鎘 / Cadmium (Cd)	mg/kg	參考IEC 62321: 2008方法, 以感應耦合電漿原子發射光譜儀檢測. / With reference to IEC 62321: 2008 and performed by ICP-AES.	2	n.d.
鉛 / Lead (Pb)	mg/kg	參考IEC 62321: 2008方法, 以感應耦合電漿原子發射光譜儀檢測. / With reference to IEC 62321: 2008 and performed by ICP-AES.	2	n.d.
汞 / Mercury (Hg)	mg/kg	參考IEC 62321: 2008方法, 以感應耦合電漿原子發射光譜儀檢測. / With reference to IEC 62321: 2008 and performed by ICP-AES.	2	n.d.
六價鉻 / Hexavalent Chromium Cr(VI) by alkaline extraction	mg/kg	參考IEC 62321: 2008方法, 以UV-VIS檢測. / With reference to IEC 62321: 2008 and performed by UV-VIS.	2	n.d.
六溴環十二烷 / Hexabromocyclododecane (HBCDD) (CAS No.: 025637-99-4)	mg/kg	參考US EPA 3540C方法, 以氣相層析/質譜儀檢測. / With reference to US EPA 3540C method. Analysis was performed by GC/MS.	5	n.d.

Unless otherwise stated the results shown in this test report refer only to the sample(s) tested. This test report cannot be reproduced, except in full, without prior written permission of the Company. 除非另有說明, 此報告結果僅對測試的樣品負責。本報告未經本公司書面許可, 不可部份複製。

This document is issued by the Company subject to its General Conditions of Service printed overleaf, available on request or accessible at www.sgs.com/terms_and_conditions.htm and, for electronic format documents, subject to Terms and Conditions for Electronic Documents at www.sgs.com/terms_e-document.htm. Attention is drawn to the limitation of liability, indemnification and jurisdiction issues defined therein. Any holder of this document is advised that information contained hereon reflects the Company's findings at the time of its intervention only and within the limits of Client's instructions, if any. The Company's sole responsibility is to its Client and this document does not exonerate parties to a transaction from exercising all their rights and obligations under the transaction documents. This document cannot be reproduced except in full, without prior written approval of the Company. Any unauthorized alteration, forgery or falsification of the content or appearance of this document is unlawful and offenders may be prosecuted to the fullest extent of the law.

SGS Taiwan Ltd.

 台灣檢驗科技股份有限公司 Chemical-Taipei 33 WuChyuan Road, Wuku Industrial Zone, New Taipei City, Taiwan / 新北市五股工業區五權路33號 + 886 (02)2299 3279 f + 886 (02)2299 3237 www.sgs.com

Member of the SGS Group (SGS SA)

測試報告

Test Report

號碼(No.) : CE/2011/21056 日期(Date) : 2011/02/17 頁數(Page) : 3 of 10

新日本化金株式會社

SHIN-NIHON KAKIN CO., LTD.

東京都板橋區宮本町33番7號

33-7, MIYAMOTO-CHO, ITABASHI-KU, TOKYO, JAPAN



測試項目 (Test Items)	單位 (Unit)	測試方法 (Method)	方法偵測 極限值 (MDL)	結果 (Result)
				No.1
鄰苯二甲酸甲苯基丁酯 / BBP (Benzyl butyl phthalate) (CAS No.: 000085-68-7)	%	參考EN 14372, 以氣相層析儀/質譜儀檢測 之。 / With reference to EN 14372. Analysis was performed by GC/MS.	0.003	n.d.
鄰苯二甲酸二丁酯 / DBP (Dibutyl phthalate) (CAS No.: 000084-74-2)	%	參考EN 14372, 以氣相層析儀/質譜儀檢測 之。 / With reference to EN 14372. Analysis was performed by GC/MS.	0.003	0.034
鄰苯二甲酸二(2-乙基己基)酯 / DEHP (Di- (2-ethylhexyl) phthalate) (CAS No.: 000117-81-7)	%	參考EN 14372, 以氣相層析儀/質譜儀檢測 之。 / With reference to EN 14372. Analysis was performed by GC/MS.	0.003	n.d.
四溴雙酚-A / Tetrabromobisphenol A (TBBP-A) (CAS No.: 000079-94-7)	mg/kg	參考DIN 53313方法, 以氣相層析儀/質譜儀 檢測。 / With reference to DIN 53313 method. Analysis was performed by	10	n.d.
鹵素 / Halogen				
鹵素 (氟) / Halogen-Fluorine (F) (CAS No.: 014762-94-8)	mg/kg	參考BS EN 14582:2007, 以離子層析儀分 析。 / With reference to BS EN 14582:2007. Analysis was performed by IC.	50	n.d.
鹵素 (氯) / Halogen-Chlorine (Cl) (CAS No.: 022537-15-1)			50	n.d.
鹵素 (溴) / Halogen-Bromine (Br) (CAS No.: 010097-32-2)			50	n.d.
鹵素 (碘) / Halogen-Iodine (I) (CAS No.: 014362-44-8)			50	n.d.

Unless otherwise stated the results shown in this test report refer only to the sample(s) tested. This test report cannot be reproduced, except in full, without prior written permission of the Company. 除非另有說明, 此報告結果僅對測試的樣品負責。本報告未經本公司書面許可, 不可部份複製。

This document is issued by the Company subject to its General Conditions of Service printed overleaf, available on request or accessible at www.sgs.com/terms_and_conditions.htm and, for electronic format documents, subject to Terms and Conditions for Electronic Documents at www.sgs.com/terms_e-document.htm. Attention is drawn to the limitation of liability, indemnification and jurisdiction issues defined therein. Any holder of this document is advised that information contained hereon reflects the Company's findings at the time of its intervention only and within the limits of Client's instructions, if any. The Company's sole responsibility is to its Client and this document does not exonerate parties to a transaction from exercising all their rights and obligations under the transaction documents. This document cannot be reproduced except in full, without prior written approval of the Company. Any unauthorized alteration, forgery or falsification of the content or appearance of this document is unlawful and offenders may be prosecuted to the fullest extent of the law.

SGS Taiwan Ltd.

 台灣檢驗科技股份有限公司 Chemical-Taipei 33 WuChyuan Road, Wuku Industrial Zone, New Taipei City, Taiwan / 新北市五股工業區五權路33號 +886 (02)2299 3279 f+886 (02)2299 3237 www.sgs.com

測試報告

Test Report

號碼(No.) : CE/2011/21056 日期(Date) : 2011/02/17 頁數(Page) : 4 of 10

新日本化金株式會社

SHIN-NIHON KAKIN CO., LTD.

東京都板橋區宮本町33番7號

33-7, MIYAMOTO-CHO, ITABASHI-KU, TOKYO, JAPAN



測試項目 (Test Items)	單位 (Unit)	測試方法 (Method)	方法偵測 極限值 (MDL)	結果 (Result)
				No.1
多溴聯苯總和 / Sum of PBBs	mg/kg	參考IEC 62321: 2008方法, 以氣相層析儀/ 質譜儀檢測. / With reference to IEC 62321: 2008 and performed by GC/MS.	-	n.d.
一溴聯苯 / Monobromobiphenyl			5	n.d.
二溴聯苯 / Dibromobiphenyl			5	n.d.
三溴聯苯 / Tribromobiphenyl			5	n.d.
四溴聯苯 / Tetrabromobiphenyl			5	n.d.
五溴聯苯 / Pentabromobiphenyl			5	n.d.
六溴聯苯 / Hexabromobiphenyl			5	n.d.
七溴聯苯 / Heptabromobiphenyl			5	n.d.
八溴聯苯 / Octabromobiphenyl			5	n.d.
九溴聯苯 / Nonabromobiphenyl			5	n.d.
十溴聯苯 / Decabromobiphenyl			5	n.d.
多溴聯苯醚總和 / Sum of PBDEs			-	n.d.
一溴聯苯醚 / Monobromodiphenyl ether			5	n.d.
二溴聯苯醚 / Dibromodiphenyl ether			5	n.d.
三溴聯苯醚 / Tribromodiphenyl ether			5	n.d.
四溴聯苯醚 / Tetrabromodiphenyl ether			5	n.d.
五溴聯苯醚 / Pentabromodiphenyl ether			5	n.d.
六溴聯苯醚 / Hexabromodiphenyl ether			5	n.d.
七溴聯苯醚 / Heptabromodiphenyl ether			5	n.d.
八溴聯苯醚 / Octabromodiphenyl ether			5	n.d.
九溴聯苯醚 / Nonabromodiphenyl ether			5	n.d.
十溴聯苯醚 / Decabromodiphenyl ether			5	n.d.

備註(Note) :

1. mg/kg = ppm ; 0.1wt% = 1000ppm
2. n.d. = Not Detected (未檢出)
3. MDL = Method Detection Limit (方法偵測極限值)
4. "-" = Not Regulated (無規格值)

Unless otherwise stated the results shown in this test report refer only to the sample(s) tested. This test report cannot be reproduced, except in full, without prior written permission of the Company. 除非另有說明, 此報告結果僅對測試的樣品負責。本報告未經本公司書面許可, 不可部份複製。

This document is issued by the Company subject to its General Conditions of Service printed overleaf, available on request or accessible at www.sgs.com/terms_and_conditions.htm and, for electronic format documents, subject to Terms and Conditions for Electronic Documents at www.sgs.com/terms_e-document.htm. Attention is drawn to the limitation of liability, indemnification and jurisdiction issues defined therein. Any holder of this document is advised that information contained hereon reflects the Company's findings at the time of its intervention only and within the limits of Client's instructions, if any. The Company's sole responsibility is to its Client and this document does not exonerate parties to a transaction from exercising all their rights and obligations under the transaction documents. This document cannot be reproduced except in full, without prior written approval of the Company. Any unauthorized alteration, forgery or falsification of the content or appearance of this document is unlawful and offenders may be prosecuted to the fullest extent of the law.

SGS Taiwan Ltd.

台灣檢驗科技股份有限公司 Chemical-Taipei 33 WuChyuan Road, Wuku Industrial Zone, New Taipei City, Taiwan / 新北市五股工業區五權路33號 +886 (02)2299 3279 f+ 886 (02)2299 3237 www.sgs.com

Member of the SGS Group (SGS SA)

測試報告

Test Report

號碼(No.) : CE/2011/21056 日期(Date) : 2011/02/17 頁數(Page) : 5 of 10

新日本化金株式會社

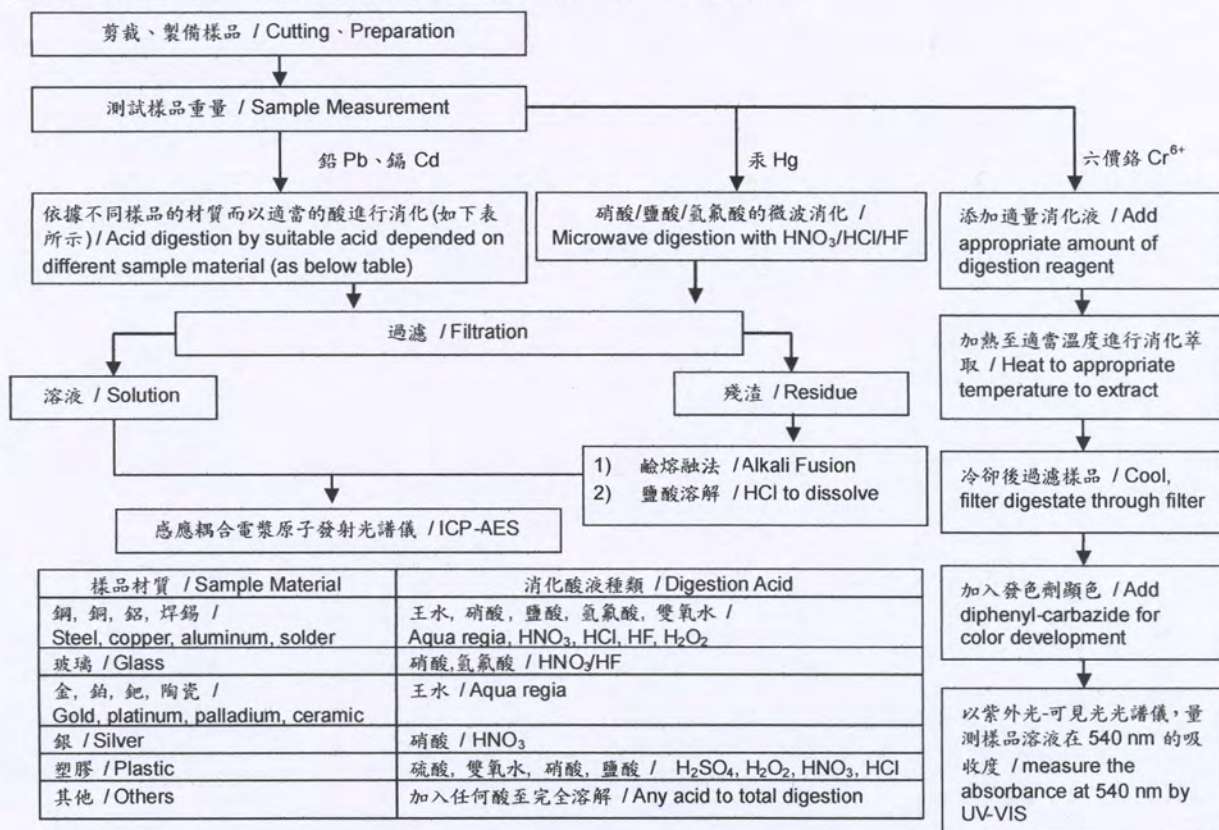
SHIN-NIHON KAKIN CO., LTD.

東京都板橋區宮本町33番7號

33-7, MIYAMOTO-CHO, ITABASHI-KU, TOKYO, JAPAN



- 1) 根據以下的流程圖之條件，樣品已完全溶解。(六價鉻測試方法除外) / These samples were dissolved totally by pre-conditioning method according to below flow chart. (Cr⁶⁺ test method excluded)
- 2) 測試人員：楊登偉 / Name of the person who made measurement: Climbgreat Yang
- 3) 測試負責人：張啓興 / Name of the person in charge of measurement: Troy Chang



Unless otherwise stated the results shown in this test report refer only to the sample(s) tested. This test report cannot be reproduced, except in full, without prior written permission of the Company. 除非另有說明，此報告結果僅對測試的樣品負責。本報告未經本公司書面許可，不可部份複製。

This document is issued by the Company subject to its General Conditions of Service printed overleaf, available on request or accessible at www.sgs.com/terms_and_conditions.htm and, for electronic format documents, subject to Terms and Conditions for Electronic Documents at www.sgs.com/terms_e-document.htm. Attention is drawn to the limitation of liability, indemnification and jurisdiction issues defined therein. Any holder of this document is advised that information contained hereon reflects the Company's findings at the time of its intervention only and within the limits of Client's instructions, if any. The Company's sole responsibility is to its Client and this document does not exonerate parties to a transaction from exercising all their rights and obligations under the transaction documents. This document cannot be reproduced except in full, without prior written approval of the Company. Any unauthorized alteration, forgery or falsification of the content or appearance of this document is unlawful and offenders may be prosecuted to the fullest extent of the law.

SGS Taiwan Ltd.
台灣檢驗科技股份有限公司 Chemical-Taipei 33 WuChyuan Road, Wuku Industrial Zone, New Taipei City, Taiwan / 新北市五股工業區五權路33號 +886 (02)2299 3279 f +886 (02)2299 3237 www.sgs.com

Member of the SGS Group (SGS SA)

測試報告 Test Report

號碼(No.) : CE/2011/21056 日期(Date) : 2011/02/17 頁數(Page) : 6 of 10

新日本化金株式會社

SHIN-NIHON KAKIN CO., LTD.

東京都板橋區宮本町33番7號

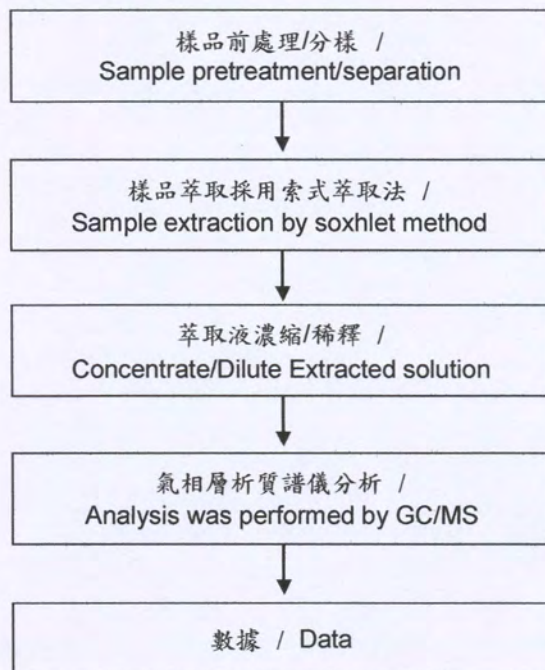
33-7, MIYAMOTO-CHO, ITABASHI-KU, TOKYO, JAPAN



索式萃取(GC/MS)分析流程圖 /

Analytical flow chart of Soxhlet extraction (GC/MS) procedure

- 1) 測試人員：傅莉雅 / Name of the person who made measurement: Lydia Fu
 - 2) 測試負責人：陳新智 / Name of the person in charge of measurement: Shinjyh Chen
- 測試項目(Test Items): 可塑劑、苯並三唑類化合物、六溴環十二烷、壬酚、單甲基二
溴二苯基甲烷、有機磷化合物 / Phthalate、Benzotriazole、HBCDD、NP、DBBT、
Organic phosphorus compounds



Unless otherwise stated the results shown in this test report refer only to the sample(s) tested. This test report cannot be reproduced, except in full, without prior written permission of the Company. 除非另有說明，此報告結果僅對測試的樣品負責。本報告未經本公司書面許可，不可部份複製。
This document is issued by the Company subject to its General Conditions of Service printed overleaf, available on request or accessible at www.sgs.com/terms_and_conditions.htm and for electronic format documents, subject to Terms and Conditions for Electronic Documents at www.sgs.com/terms_e-document.htm. Attention is drawn to the limitation of liability, indemnification and jurisdiction issues defined therein. Any holder of this document is advised that information contained hereon reflects the Company's findings at the time of its intervention only and within the limits of Client's instructions, if any. The Company's sole responsibility is to its Client and this document does not exonerate parties to a transaction from exercising all their rights and obligations under the transaction documents. This document cannot be reproduced except in full, without prior written approval of the Company. Any unauthorized alteration, forgery or falsification of the content or appearance of this document is unlawful and offenders may be prosecuted to the fullest extent of the law.

SGS Taiwan Ltd.
台灣檢驗科技股份有限公司 Chemical-Taipei 33 WuChyuan Road, Wuku Industrial Zone, New Taipei City, Taiwan / 新北市五股工業區五權路33號 +886 (02)2299 3279 f +886 (02)2299 3237 www.sgs.com

Member of the SGS Group (SGS SA)

測試報告 Test Report

號碼(No.) : CE/2011/21056 日期(Date) : 2011/02/17 頁數(Page) : 7 of 10

新日本化金株式會社

SHIN-NIHON KAKIN CO., LTD.

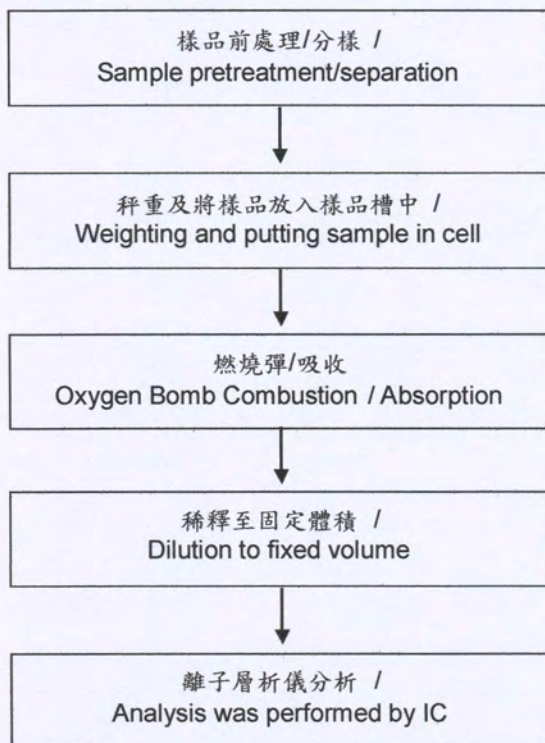
東京都板橋區宮本町33番7號

33-7, MIYAMOTO-CHO, ITABASHI-KU, TOKYO, JAPAN



鹵素分析流程圖 / Analytical flow chart of halogen content

- 1) 測試人員：陳思臻 / Name of the person who made measurement: Rita Chen
- 2) 測試負責人：張啓興 / Name of the person in charge of measurement: Troy Chang



Unless otherwise stated the results shown in this test report refer only to the sample(s) tested. This test report cannot be reproduced, except in full, without prior written permission of the Company. 除非另有說明，此報告結果僅對測試的樣品負責。本報告未經本公司書面許可，不可部份複製。
This document is issued by the Company subject to its General Conditions of Service printed overleaf, available on request or accessible at www.sgs.com/terms_and_conditions.htm and, for electronic format documents, subject to Terms and Conditions for Electronic Documents at www.sgs.com/terms_e-document.htm. Attention is drawn to the limitation of liability, indemnification and jurisdiction issues defined therein. Any holder of this document is advised that information contained hereon reflects the Company's findings at the time of its intervention only and within the limits of Client's instructions, if any. The Company's sole responsibility is to its Client and this document does not exonerate parties to a transaction from exercising all their rights and obligations under the transaction documents. This document cannot be reproduced except in full, without prior written approval of the Company. Any unauthorized alteration, forgery or falsification of the content or appearance of this document is unlawful and offenders may be prosecuted to the fullest extent of the law.

SGS Taiwan Ltd. 台灣檢驗科技股份有限公司 Chemical-Taipei 33 WuChyuan Road, Wuku Industrial Zone, New Taipei City, Taiwan / 新北市五股工業區五權路33號 + 886 (02)2299 3279 f + 886 (02)2299 3237 www.sgs.com

Member of the SGS Group (SGS SA)

測試報告 Test Report

號碼(No.) : CE/2011/21056 日期(Date) : 2011/02/17 頁數(Page) : 8 of 10

新日本化金株式會社

SHIN-NIHON KAKIN CO., LTD.

東京都板橋區宮本町33番7號

33-7, MIYAMOTO-CHO, ITABASHI-KU, TOKYO, JAPAN



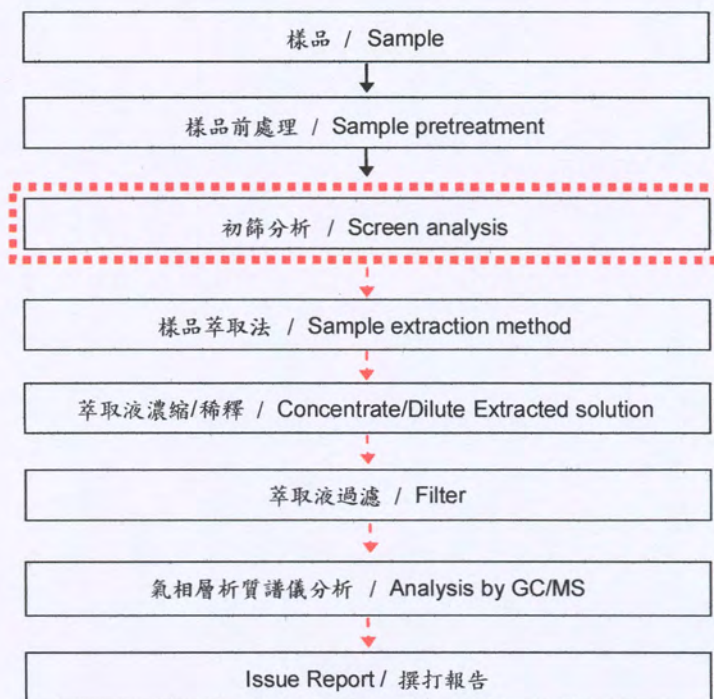
分析流程圖 / Analytical flow chart

1) 測試人員：翁賜彬 / Name of the person who made measurement: Roman Wong

2) 測試負責人：張啓興 / Name of the person in charge of measurement: Troy Chang

■ 測試項目 (Test Items): 多溴聯苯/多溴聯苯醚, 四溴雙酚-A雙 / PBB/PBDE, TBBP-A-bis

初次測試程序 / First testing process → 選擇性篩檢程序 / Optional screen process 確認程序 / Confirmation process - - -



Unless otherwise stated the results shown in this test report refer only to the sample(s) tested. This test report cannot be reproduced, except in full, without prior written permission of the Company. 除非另有說明，此報告結果僅對測試的樣品負責。本報告未經本公司書面許可，不可部份複製。
This document is issued by the Company subject to its General Conditions of Service printed overleaf, available on request or accessible at www.sgs.com/terms_and_conditions.htm and for electronic format documents, subject to Terms and Conditions for Electronic Documents at www.sgs.com/terms_e-document.htm. Attention is drawn to the limitation of liability, indemnification and jurisdiction issues defined therein. Any holder of this document is advised that information contained hereon reflects the Company's findings at the time of its intervention only and within the limits of Client's instructions, if any. The Company's sole responsibility is to its Client and this document does not exonerate parties to a transaction from exercising all their rights and obligations under the transaction documents. This document cannot be reproduced except in full, without prior written approval of the Company. Any unauthorized alteration, forgery or falsification of the content or appearance of this document is unlawful and offenders may be prosecuted to the fullest extent of the law.

SGS Taiwan Ltd. 台灣檢驗科技股份有限公司 Chemical-Taipei 33 WuChyuan Road, Wuku Industrial Zone, New Taipei City, Taiwan / 新北市五股工業區五權路33號 +886 (02)2299 3279 f + 886 (02)2299 3237 www.sgs.com

Member of the SGS Group (SGS SA)

測試報告 Test Report

號碼(No.) : CE/2011/21056 日期(Date) : 2011/02/17 頁數(Page) : 9 of 10

新日本化金株式會社

SHIN-NIHON KAKIN CO., LTD.

東京都板橋區宮本町33番7號

33-7, MIYAMOTO-CHO, ITABASHI-KU, TOKYO, JAPAN

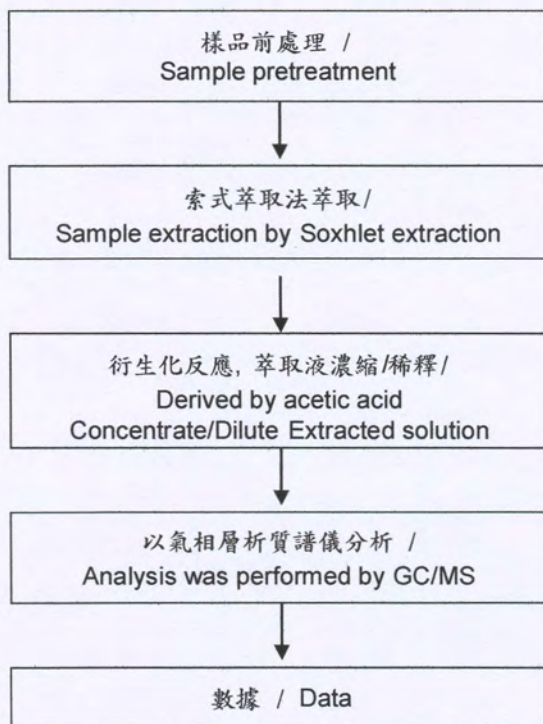


分析流程圖 /

Analytical flow chart

- 1) 測試人員：傅莉雅 / Name of the person who made measurement: Lydia Fu
- 2) 測試負責人：陳新智 / Name of the person in charge of measurement: Shinjyh Chen

■ 測試項目(Test Items): 四溴雙酚-A、雙酚 A / TBBP-A、Bisphenol A



Unless otherwise stated the results shown in this test report refer only to the sample(s) tested. This test report cannot be reproduced, except in full, without prior written permission of the Company. 除非另有說明，此報告結果僅對測試的樣品負責。本報告未經本公司書面許可，不可部份複製。

This document is issued by the Company subject to its General Conditions of Service printed overleaf, available on request or accessible at www.sgs.com/terms_and_conditions.htm and, for electronic format documents, subject to Terms and Conditions for Electronic Documents at www.sgs.com/terms_e-document.htm. Attention is drawn to the limitation of liability, indemnification and jurisdiction issues defined therein. Any holder of this document is advised that information contained hereon reflects the Company's findings at the time of its intervention only and within the limits of Client's instructions, if any. The Company's sole responsibility is to its Client and this document does not exonerate parties to a transaction from exercising all their rights and obligations under the transaction documents. This document cannot be reproduced except in full, without prior written approval of the Company. Any unauthorized alteration, forgery or falsification of the content or appearance of this document is unlawful and offenders may be prosecuted to the fullest extent of the law.

SGS Taiwan Ltd.

台灣檢驗科技股份有限公司 Chemical-Taipei 33 WuChyuan Road, Wuku Industrial Zone, New Taipei City, Taiwan / 新北市五股工業區五權路33號 + 886 (02)2299 3279 f + 886 (02)2299 3237 www.sgs.com

測試報告 Test Report

號碼(No.) : CE/2011/21056 日期(Date) : 2011/02/17 頁數(Page) : 10 of 10

新日本化金株式會社

SHIN-NIHON KAKIN CO., LTD.

東京都板橋區宮本町33番7號

33-7, MIYAMOTO-CHO, ITABASHI-KU, TOKYO, JAPAN



CE/2011/21056



** 報告結尾 (End of Report) **

Unless otherwise stated the results shown in this test report refer only to the sample(s) tested. This test report cannot be reproduced, except in full, without prior written permission of the Company. 除非另有說明，此報告結果僅對測試的樣品負責。本報告未經本公司書面許可，不可部份複製。

This document is issued by the Company subject to its General Conditions of Service printed overleaf, available on request or accessible at www.sgs.com/terms_and_conditions.htm and, for electronic format documents, subject to Terms and Conditions for Electronic Documents at www.sgs.com/terms_e-document.htm. Attention is drawn to the limitation of liability, indemnification and jurisdiction issues defined therein. Any holder of this document is advised that information contained hereon reflects the Company's findings at the time of its intervention only and within the limits of Client's instructions, if any. The Company's sole responsibility is to its Client and this document does not exonerate parties to a transaction from exercising all their rights and obligations under the transaction documents. This document cannot be reproduced except in full, without prior written approval of the Company. Any unauthorized alteration, forgery or falsification of the content or appearance of this document is unlawful and offenders may be prosecuted to the fullest extent of the law.

SGS Taiwan Ltd.

台灣檢驗科技股份有限公司 Chemical-Taipei 33 WuChyuan Road, Wuku Industrial Zone, New Taipei City, Taiwan / 新北市五股工業區五權路33號 +886 (02)2299 3279 f +886 (02)2299 3237 www.sgs.com

Member of the SGS Group (SGS SA)

Page 1 of 4

DONGGUAN QI HANG XI YE MANUFACTURING CO.,LTD
NO.1 INDUSTRIAL PARK,XIANGANG,CHANGAN TOWN,DONGGUAN CITY
CHINA

This report is to supersede test report CANML1100595601.

The following sample(s) was/were submitted and identified on behalf of the clients as :

LEAD-FREE SOLDER PASTE

SGS Job No. : 13005585 - GZ
SGS Internal Reference No. : GC110301059-8.1
Client Ref. Information : MIXTURE OF QH#LF96, QH#LF97, QH#LF98, QH#LF658, QH#LF601,
QH#LT658, QH#LT601, QH#LT658C, QH#LF96H, QH#LF97H,
QH#LF98H, QH#LF658H, QH#LF601H, QH#LT658H, QH#LT601H,
QH#LT658CH

Date of Sample Received : 02 Mar 2011
Testing Period : 02 Mar 2011 - 07 Mar 2011

Test Requested : Selected test(s) as requested by client.

Test Method : Please refer to next page(s).

Test Results : Please refer to next page(s).

Conclusion : Based on the performed tests on submitted sample(s), the results **comply with the RoHS Directive 2002/95/EC and its subsequent amendments.**

Signed for and on behalf of
SGS-CSTC Ltd.

Alper

Alpher Qiu
Approved Signatory

Test Report

No. CANML1100751101

Date: 10 Mar 2011

Page 2 of 4

Test Results:

ID for specimen 1 : CAN11-007511.001
Description for specimen 1 : Grey paste

RoHS Directive 2002/95/EC

Test Item(s)	Unit	Test Method (Reference)	Result	MDL	Limit
Cadmium (Cd)	mg/kg	IEC 62321:2008, ICP-OES	N.D.	2	100
Lead (Pb)	mg/kg	IEC 62321:2008, ICP-OES	250	2	1000
Mercury (Hg)	mg/kg	IEC 62321:2008, ICP-OES	N.D.	2	1000
Hexavalent Chromium (CrVI) by alkaline extraction	mg/kg	IEC 62321:2008, UV-Vis	N.D.	2	1000
Sum of PBBs	mg/kg	-	N.D.	-	1000
Monobromobiphenyl	mg/kg	IEC 62321:2008, GC-MS	N.D.	5	
Dibromobiphenyl	mg/kg	IEC 62321:2008, GC-MS	N.D.	5	
Tribromobiphenyl	mg/kg	IEC 62321:2008, GC-MS	N.D.	5	
Tetrabromobiphenyl	mg/kg	IEC 62321:2008, GC-MS	N.D.	5	
Pentabromobiphenyl	mg/kg	IEC 62321:2008, GC-MS	N.D.	5	
Hexabromobiphenyl	mg/kg	IEC 62321:2008, GC-MS	N.D.	5	
Heptabromobiphenyl	mg/kg	IEC 62321:2008, GC-MS	N.D.	5	
Octabromobiphenyl	mg/kg	IEC 62321:2008, GC-MS	N.D.	5	
Nonabromobiphenyl	mg/kg	IEC 62321:2008, GC-MS	N.D.	5	
Decabromobiphenyl	mg/kg	IEC 62321:2008, GC-MS	N.D.	5	
Sum of PBDEs	mg/kg	-	N.D.	-	1000
Monobromodiphenyl ether	mg/kg	IEC 62321:2008, GC-MS	N.D.	5	
Dibromodiphenyl ether	mg/kg	IEC 62321:2008, GC-MS	N.D.	5	
Tribromodiphenyl ether	mg/kg	IEC 62321:2008, GC-MS	N.D.	5	
Tetrabromodiphenyl ether	mg/kg	IEC 62321:2008, GC-MS	N.D.	5	
Pentabromodiphenyl ether	mg/kg	IEC 62321:2008, GC-MS	N.D.	5	
Hexabromodiphenyl ether	mg/kg	IEC 62321:2008, GC-MS	N.D.	5	
Heptabromodiphenyl ether	mg/kg	IEC 62321:2008, GC-MS	N.D.	5	
Octabromodiphenyl ether	mg/kg	IEC 62321:2008, GC-MS	N.D.	5	
Nonabromodiphenyl ether	mg/kg	IEC 62321:2008, GC-MS	N.D.	5	
Decabromodiphenyl ether	mg/kg	IEC 62321:2008, GC-MS	N.D.	5	

Note:

1. mg/kg = ppm
2. N.D. = Not Detected (< MDL)
3. MDL = Method Detection Limit
4. "-" = Not regulated

Remark: The result(s) shown is/are of the total weight of dried sample.

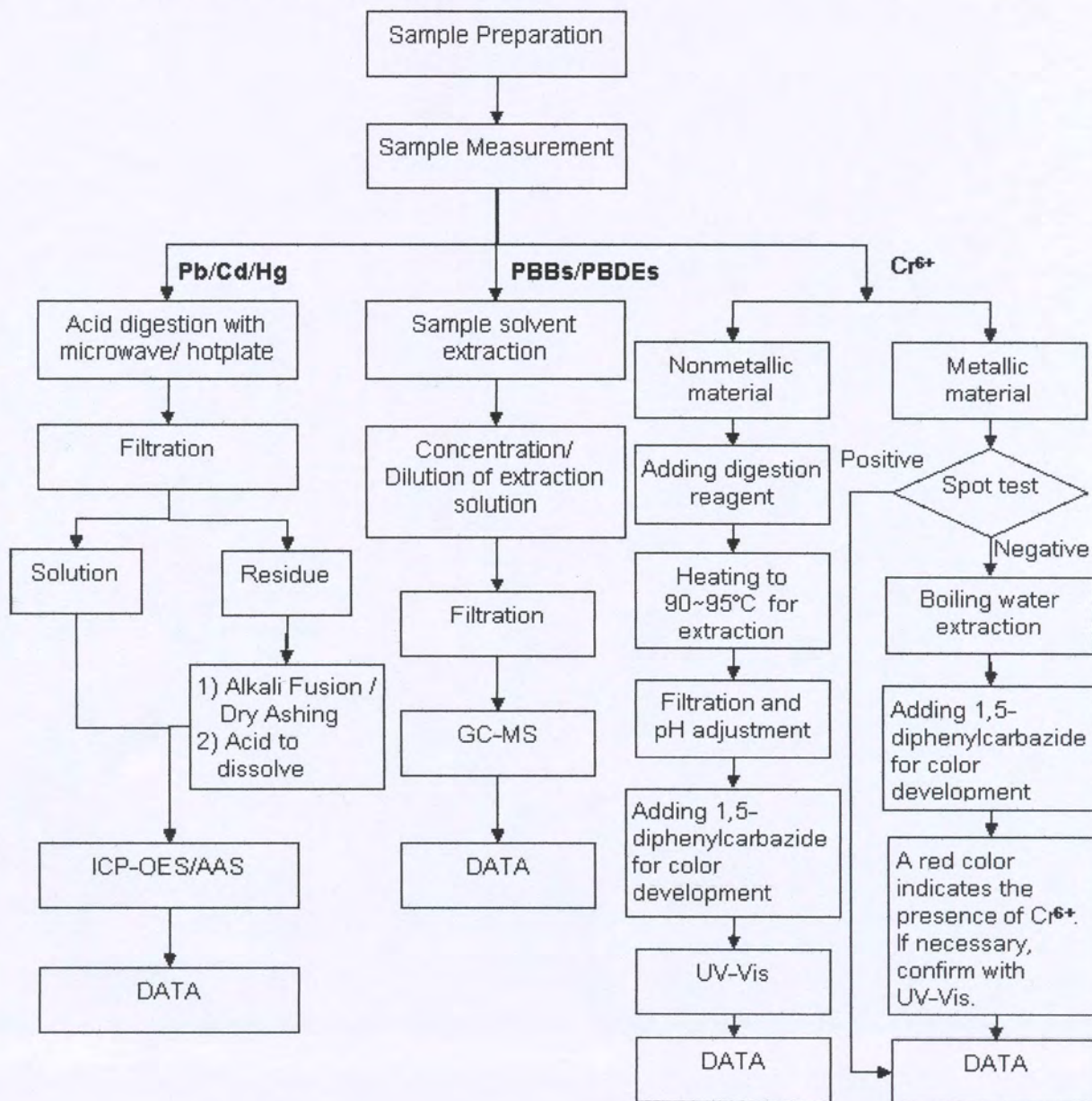
This document is issued by the Company subject to its General Conditions of Service printed overleaf, available on request or accessible at http://www.sgs.com/terms_and_conditions.htm and, for electronic format documents, subject to Terms and Conditions for Electronic Documents at www.sgs.com/terms_e-document.htm. Attention is drawn to the limitation of liability, indemnification and jurisdiction issues defined therein. Any holder of this document is advised that information contained hereon reflects the Company's findings at the time of its inspection only, and within the limits of Client's instructions, if any. The Company's sole responsibility is to its Client and this document does not exonerate parties to a transaction from exercising all their rights and obligations under the transaction documents. This document cannot be reproduced except in full, without prior written approval of the Company. Any unauthorized alteration, forgery or falsification of the content or appearance of this document is unlawful and offenders may be prosecuted to the fullest extent of the law. Unless otherwise stated, the results shown in this test report refer only to the sample(s) tested.



ATTACHMENTS

RoHS Testing Flow Chart

- 1) Name of the person who made testing: Bella Wang / Cutey Yu / Ross Zhan
- 2) Name of the person in charge of testing: Adams Yu / Ryan Yang
- 3) These samples were dissolved totally by pre-conditioning method according to below flow chart (Cr6+ and PBBs/PBDEs test method excluded).



This document is issued by the Company subject to its General Conditions of Service printed overleaf, available on request or accessible at http://www.sgs.com/terms_and_conditions.htm and, for electronic format documents, subject to Terms and Conditions for Electronic Documents at www.sgs.com/terms_e-document.htm. Attention is drawn to the limitation of liability, indemnification and jurisdiction issues defined therein. Any holder of this document is advised that information contained hereon reflects the Company's findings at the time of its preparation only and within the limits of Client's instructions, if any. The Company's sole responsibility is to its Client and this document does not exonerate parties to a transaction from exercising all their rights and obligations under the transaction documents. This document cannot be reproduced except in full, without prior written approval of the Company. Any unauthorized alteration, forgery or falsification of the content or appearance of this document is unlawful and offenders may be prosecuted to the fullest extent of the law. Unless otherwise stated, the results shown in this test report refer only to the sample(s) tested.



Test Report

No. CANML1100751101

Date: 10 Mar 2011

Page 4 of 4

Sample photo:



SGS authenticate the photo on original report only

*** End of Report ***

This document is issued by the Company subject to its General Conditions of Service printed overleaf, available on request or accessible at http://www.sgs.com/terms_and_conditions.htm and, for electronic format documents, subject to Terms and Conditions for Electronic Documents at www.sgs.com/terms_e-document.htm. Attention is drawn to the limitation of liability, indemnification and jurisdiction issues defined therein. Any holder of this document is advised that information contained hereon reflects the Company's findings at the time of its inspection only, and within the limits of Client's instructions, if any. The Company's sole responsibility is to its Client and this document does not exonerate parties to a transaction from exercising all their rights and obligations under the transaction documents. This document cannot be reproduced except in full, without prior written approval of the Company. Any unauthorized alteration, forgery or falsification of the content or appearance of this document is unlawful and offenders may be prosecuted to the fullest extent of the law. Unless otherwise stated, the results shown in this test report refer only to the sample(s) tested.



198 Kezhu Road, Sciencetech Park Guangzhou Economic & Technology Development District, Guangzhou, China 510663 t (86-20) 82155555 f (86-20) 82075113 www.cn.sgs.com
中国·广州·经济技术开发区科学城科珠路198号 邮编: 510663 t (86-20) 82155555 f (86-20) 82075113 e sgs.china@sgs.com

Member of the SGS Group (SGS SA)

Test Report

No. CANML1100751102

Date: 10 Mar 2011

Page 1 of 4

DONGGUAN QI HANG XI YE MANUFACTURING CO.,LTD
NO.1 INDUSTRIAL PARK,XIAGANG,CHANGAN TOWN,DONGGUAN CITY
CHINA

This report is to supersede test report CANML1100595602.

The following sample(s) was/were submitted and identified on behalf of the clients as :

LEAD-FREE SOLDER PASTE

SGS Job No. : 13005585 - GZ
SGS Internal Reference No. : GC110301059-8.2
Client Ref. Information : MIXTURE OF QH#LF96H, QH#LF97H, QH#LF98H, QH#LF658H,
QH#LF601H, QH#LT658H, QH#LT601H, QH#LT658CH
Date of Sample Received : 02 Mar 2011
Testing Period : 02 Mar 2011 - 07 Mar 2011
Test Requested : Selected test(s) as requested by client.
Test Method : Please refer to next page(s).
Test Results : Please refer to next page(s).

Signed for and on behalf of
SGS-CSTC Ltd.



Alpher Qiu
Approved Signatory

This document is issued by the Company subject to its General Conditions of Service and/or individual contracts or requests for quotation, terms and conditions, and for electronic format documents, subject to its Terms and Conditions for Electronic Documents at www.sgs.com/infocsc/sgsdoc.htm. Attention is drawn to the limitation of liability, indemnification and jurisdiction clauses set forth therein. Any holder of this document is advised that information contained herein reflects the Company's findings at the time of its completion of this test and within the limits of Client's instructions, if any. The Company's sole responsibility is to its Client and this document does not constitute a contract or a transaction. It is not to be used for any other purpose and is subject to the terms and conditions of the transaction. This document cannot be reproduced except in full, without prior written approval of the Company. Any unauthorized alteration, forgery or falsification of the content or appearance of this document is unlawful and offenders may be prosecuted to the fullest extent of the law. Please refer to the results shown in this test report refer only to the samples tested.



Test Report

No. CANML1100751102

Date: 10 Mar 2011

Page 2 of 4

Test Results:

ID for specimen 1 : CAN11-007511.001
Description for specimen 1 : Grey paste

Halogen

Test Item(s)	Unit	Test Method (Reference)	Result	MDL
Fluorine (F)	mg/kg	BS EN 14582:2007, IC	N.D.	50
Chlorine (Cl)	mg/kg	BS EN 14582:2007, IC	N.D.	50
Bromine (Br)	mg/kg	BS EN 14582:2007, IC	N.D.	50
Iodine (I)	mg/kg	BS EN 14582:2007, IC	N.D.	50

Note:

1. mg/kg = ppm
2. N.D. = Not Detected (< MDL)
3. MDL = Method Detection Limit

Remark1: The result(s) shown is/are of the total weight of wet sample.

Remark2: For Halogen tests, the specimen is/are extracted by organic solvent and subsequently burned in oxygen bomb.

This document is issued by the Company subject to its General Conditions of Service printed overleaf, available on request or accessible at http://www.sgs.com/terms_and_conditions.htm and, for electronic format documents, subject to Terms and Conditions for Electronic Documents at www.sgs.com/terms_e-document.htm. Attention is drawn to the limitation of liability, indemnification and jurisdiction issues defined therein. Any holder of this document is advised that information contained hereon reflects the Company's findings at the time of its preparation only and within the limits of Client's instructions, if any. The Company's sole responsibility is to its Client and this document does not exonerate parties to a transaction from exercising all their rights and obligations under the transaction documents. This document cannot be reproduced except in full, without prior written approval of the Company. Any unauthorized alteration, forgery or falsification of the content or appearance of this document is unlawful and offenders may be prosecuted to the fullest extent of the law. Unless otherwise stated, the results shown in this test report refer only to the sample(s) tested.



SGS Testing Services (China) Co., Ltd.
Guangzhou

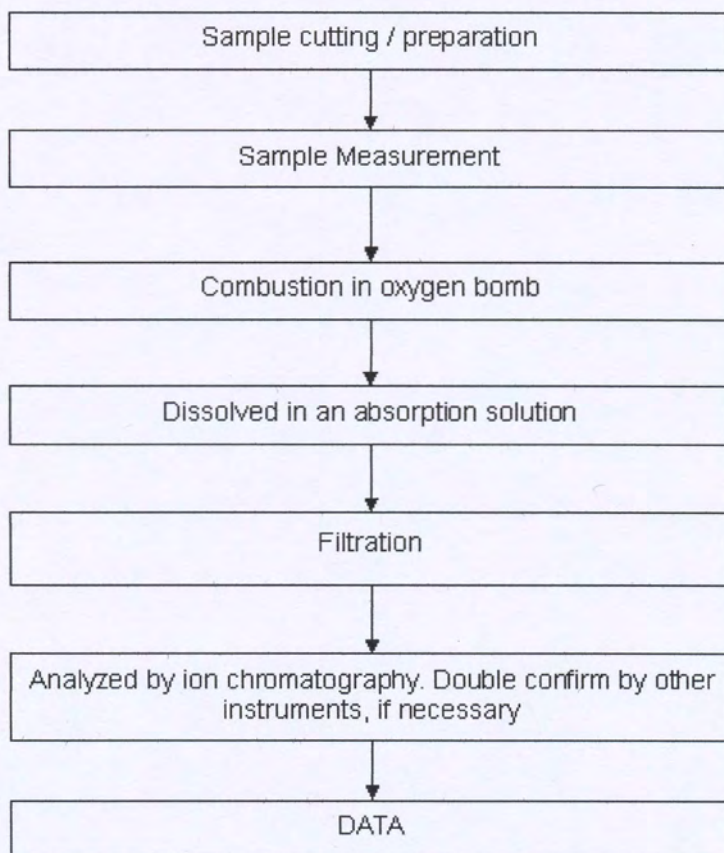
198 Kezhu Road, Science Park Guangzhou Economic & Technology Development District, Guangzhou, China 510663 t (86-20) 82155555 f (86-20) 82075113 www.cn.sgs.com
中国·广州·经济技术开发区科学城科珠路198号 邮编: 510663 t (86-20) 82155555 f (86-20) 82075113 e sgs.china@sgs.com

Member of the SGS Group (SGS SA)

ATTACHMENTS

Halogen Testing Flow Chart

- 1) Name of the person who made testing: Liang Wang
- 2) Name of the person in charge of testing: Michelle Song



This document is issued by the Company subject to its General Conditions of Service printed overleaf, available on request or accessible at http://www.sgs.com/terms_and_conditions.htm and, for electronic format documents, subject to Terms and Conditions for Electronic Documents at www.sgs.com/terms_e-document.htm. Attention is drawn to the limitation of liability, indemnification and jurisdiction issues defined therein. Any holder of this document is advised that information contained hereon reflects the Company's findings at the time of its preparation only, and within the limits of Client's instructions, if any. The Company's sole responsibility is to its Client and this document does not exonerate parties to a transaction from exercising all their rights and obligations under the transaction documents. This document cannot be reproduced except in full, without prior written approval of the Company. Any unauthorized alteration, forgery or falsification of the content or appearance of this document is unlawful and offenders may be prosecuted to the fullest extent of the law. Unless otherwise stated, the results shown in this test report refer only to the sample(s) tested.



Test Report

No. CANML1100751102

Date: 10 Mar 2011

Page 4 of 4

Sample photo:



SGS authenticate the photo on original report only

*** End of Report ***

This document is issued by the Company subject to its General Conditions of Service printed overleaf, available on request or accessible at http://www.sgs.com/terms_and_conditions.htm and, for electronic format documents, subject to Terms and Conditions for Electronic Documents at www.sgs.com/terms_e-document.htm. Attention is drawn to the limitation of liability, indemnification and jurisdiction issues defined therein. Any holder of this document is advised that information contained hereon reflects the Company's findings at the time of its implementation only and within the limits of Client's instructions, if any. The Company's sole responsibility is to its Client and this document does not exonerate parties to a transaction from exercising all their rights and obligations under the transaction documents. This document cannot be reproduced except in full, without prior written approval of the Company. Any unauthorized alteration, forgery or falsification of the content or appearance of this document is unlawful and offenders may be prosecuted to the fullest extent of the law. Unless otherwise stated, the results shown in this test report refer only to the sample(s) tested.



198 Kezhu Road, Sciencetech Park Guangzhou Economic & Technology Development District, Guangzhou, China 510663 t (86-20) 82155555 f (86-20) 82075113 www.cn.sgs.com
 中国·广州·经济技术开发区科学城科珠路198号 邮编: 510663 t (86-20) 82155555 f (86-20) 82075113 e sgs.china@sgs.com

Member of the SGS Group (SGS SA)

Test Report

No. SHAEC1101137305

Date: 30 Jan 2011

Page 1 of 9

Henkel Loctite China Corporation Ltd.

Zhangjiang High Tech Park, Pudong Shanghai, China

The following sample(s) was/were submitted and identified on behalf of the clients as : SOLDER WIRE C400

SGS Job No. : SP11-002319 - SUZ

Date of Sample Received : 26 Jan 2011

Testing Period : 26 Jan 2011 - 30 Jan 2011

Test Requested : Selected test(s) as requested by client.

Test Method : Please refer to next page(s).

Test Results : Please refer to next page(s).

Conclusion : Based on the performed tests on submitted samples, the results comply with the RoHS Directive 2002/95/EC and its subsequent amendments.

Signed for and on behalf of
SGS-CSTC Ltd.



Fan Jingjie, JJ
Approved Signatory

This document is issued by the Company subject to its General Conditions of Service printed overleaf, available on request or accessible at http://www.sgs.com/terms_and_conditions.htm and for electronic formal documents subject to Terms and Conditions for Electronic Documents at www.sgs.com/terms_e-document.htm. Attention is drawn to the limitation of liability, indemnification and jurisdiction issues defined therein. Any holder of this document is advised that information contained hereon reflects the Company's findings at the time of its intervention only and within the limits of Client's instructions, if any. The Company's sole responsibility is to its Client and this document does not exonerate parties to a transaction from exercising all their rights and obligations under the transaction documents. This document cannot be reproduced except in full, without prior written approval of the Company. Any unauthorized alteration, forgery or falsification of the content or appearance of this document is unlawful and offenders may be prosecuted to the fullest extent of the law. Unless otherwise stated the results shown in this test report refer only to the sample(s) tested.



3rd Building, No. 889 Yishan Road, Xuhui District, Shanghai, China 200233
中国·上海·徐汇区宜山路889号3号楼 邮编: 200233

T: +86 (86-21) 61402553 F: +86 (86-21) 64953679 www.cn.sgs.com
HL: (86-21) 61402594 HL: (86-21) 54500353 e: sgs.china@sgs.com

Member of the SGS Group (SGS SA)

Test Report

No. SHAEC1101137305

Date: 30 Jan 2011

Page 2 of 9

Test Results :

Test Part Description :

Specimen No.	SGS Sample ID	Description
1	SHA11-011373.003	Silver metal

Remarks :

- (1) 1 mg/kg = 1 ppm = 0.0001%
- (2) MDL = Method Detection Limit
- (3) ND = Not Detected (< MDL)
- (4) "-" = Not Regulated

RoHS Directive 2002/95/EC

Test Method : With reference to IEC 62321:2008

- (1) Determination of Cadmium by ICP-OES.
- (2) Determination of Lead by ICP-OES.
- (3) Determination of Mercury by ICP-OES.
- (4) Determination of Hexavalent Chromium by Spot test / Colorimetric Method using UV-Vis.
- (5) Determination of PBBs / PBDEs by GC-MS.

Test Item(s)	Limit	Unit	MDL	003
Cadmium (Cd)	100	mg/kg	2	ND
Lead (Pb)	1,000	mg/kg	2	399
Mercury (Hg)	1,000	mg/kg	2	ND
Hexavalent Chromium (CrVI)	-	-	◇	Negative
Sum of PBBs	1,000	mg/kg	-	ND
Monobromobiphenyl	-	mg/kg	5	ND
Dibromobiphenyl	-	mg/kg	5	ND
Tribromobiphenyl	-	mg/kg	5	ND
Tetrabromobiphenyl	-	mg/kg	5	ND
Pentabromobiphenyl	-	mg/kg	5	ND
Hexabromobiphenyl	-	mg/kg	5	ND
Heptabromobiphenyl	-	mg/kg	5	ND
Octabromobiphenyl	-	mg/kg	5	ND
Nonabromobiphenyl	-	mg/kg	5	ND
Decabromobiphenyl	-	mg/kg	5	ND
Sum of PBDEs	1,000	mg/kg	-	ND
Monobromodiphenyl ether	-	mg/kg	5	ND

This document is issued by the Company subject to its General Conditions of Service printed overleaf, available on request or accessible at http://www.sgs.com/terms_and_conditions.htm and, for electronic format documents, subject to Terms and Conditions for Electronic Documents at www.sgs.com/terms_e-document.htm. Attention is drawn to the limitation of liability, indemnification and jurisdiction issues defined therein. Any holder of this document is advised that information contained hereon reflects the Company's findings at the time of its intervention only and within the limits of Client's instructions, if any. The Company's sole responsibility is to its Client and this document does not exonerate parties to a transaction from exercising all their rights and obligations under the transaction documents. This document cannot be reproduced except in full, without prior written approval of the Company. Any unauthorized alteration, forgery or falsification of the content or appearance of this document is unlawful and offenders may be prosecuted to the fullest extent of the law. Unless otherwise stated, the results shown in this test report refer only to the sample(s) tested.



SGS Testing Center (Shanghai) Co. Ltd.
Testing Center

3rd Building, No. 889 Yishan Road Xuhui District, Shanghai China 200233
中国·上海·徐汇区宜山路889号3号楼 邮编: 200233

T E&E (86-21) 61402553 F E&E (86-21) 64953679
HL: (86-21) 61402594 HL: (86-21) 54500353

www.cn.sgs.com
e sgs.china@sgs.com

Test Report

No. SHAEC1101137305

Date: 30 Jan 2011

Page 3 of 9

Test Item(s)	Limit	Unit	MDL	003
Dibromodiphenyl ether	-	mg/kg	5	ND
Tribromodiphenyl ether	-	mg/kg	5	ND
Tetrabromodiphenyl ether	-	mg/kg	5	ND
Pentabromodiphenyl ether	-	mg/kg	5	ND
Hexabromodiphenyl ether	-	mg/kg	5	ND
Heptabromodiphenyl ether	-	mg/kg	5	ND
Octabromodiphenyl ether	-	mg/kg	5	ND
Nonabromodiphenyl ether	-	mg/kg	5	ND
Decabromodiphenyl ether	-	mg/kg	5	ND

Notes :

(1) The maximum permissible limit is quoted from the document 2005/618/EC amending RoHS directive 2002/95/EC

(2) ♦ Spot-test:

Negative = Absence of CrVI coating, Positive = Presence of CrVI coating;

The tested sample should be further verified by boiling-water-extraction method if the spot test result is Negative or cannot be confirmed.

♦ Boiling-water-extraction:

Negative = Absence of CrVI coating; Positive = Presence of CrVI coating

The detected concentration in boiling-water-extraction solution is equal or greater than 0.02 mg/kg with 50 cm² sample surface area.

For corrosion protection coatings on metals: Information on storage conditions and production date of the tested sample is unavailable and thus results of Cr(VI) represent status of the sample at the time of testing

Halogen

Test Method : With reference to EN 14582: 2007, analysis was performed by Ion Chromatograph (IC).

Test Item(s)	Unit	MDL	003
Fluorine (F)	mg/kg	50	ND
Chlorine (Cl)	mg/kg	50	ND
Bromine (Br)	mg/kg	50	ND
Iodine (I)	mg/kg	50	ND

Phthalates

Test Method : With reference to EN14372: 2004, analysis was performed by GC-MS.

This document is issued by the Company subject to its General Conditions of Service printed overleaf, available on request or accessible at http://www.sgs.com/terms_and_conditions.htm and, for electronic format documents, subject to Terms and Conditions for Electronic Documents at www.sgs.com/terms_e-document.htm. Attention is drawn to the limitation of liability, indemnification and jurisdiction issues defined therein. Any holder of this document is advised that information contained hereon reflects the Company's findings at the time of its intervention only and within the limits of Client's instructions, if any. The Company's sole responsibility is to its Client and this document does not exonerate parties to a transaction from exercising all their rights and obligations under the transaction documents. This document cannot be reproduced except in full, without prior written approval of the Company. Any unauthorized alteration, forgery or falsification of the content or appearance of this document is unlawful and offenders may be prosecuted to the fullest extent of the law. Unless otherwise stated the results shown in this test report refer only to the sample(s) tested.



3rd Building, No. 889 Yishan Road Xuhui District, Shanghai China 200233
中国·上海·徐汇区宜山路889号3号楼 邮编: 200233

t E&E (86-21) 61402553 f E&E (86-21) 64953679 www.cn.sgs.com
HL: (86-21) 61402594 HL: (86-21) 54500353 e sgs.china@sgs.com

Member of the SGS Group (SGS SA)

Test Report

No. SHAEC1101137305

Date: 30 Jan 2011

Page 4 of 9

Test Item(s)	Unit	MDL	003
Dibutyl Phthalate (DBP)	%	0.003	ND
Benzylbutyl Phthalate (BBP)	%	0.003	ND
Bis-(2-ethylhexyl) Phthalate (DEHP)	%	0.003	ND

Notes :

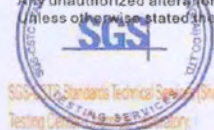
- (1) DBP,BBP,DEHP Reference information: Entry 51 of Regulation (EC) No 552/2009 amending Annex XVII of REACH Regulation (EC) No 1907/2006 (previously restricted under Directive 2005/84/EC):
- i) Shall not be used as substances or in mixtures, in concentrations greater than 0,1 % by weight of the plasticised material, in toys and childcare articles.
 - ii) Toys and childcare articles containing these phthalates in a concentration greater than 0.1 % by weight of the plasticised material shall not be placed on the market.
- Please refer to Regulation (EC) No 552/2009 to get more detail information

Hexabromocyclododecane (HBCDD)

Test Method : With reference to US EPA 3550C: 2007, analysis was performed by GC-MS.

Test Item(s)	Unit	MDL	003
Hexabromocyclododecane (HBCDD)	mg/kg	10	ND

This document is issued by the Company subject to its General Conditions of Service printed overleaf, available on request or accessible at http://www.sgs.com/terms_and_conditions.htm and, for electronic format documents, subject to Terms and Conditions for Electronic Documents at www.sgs.com/terms_e-document.htm. Attention is drawn to the limitation of liability, indemnification and jurisdiction issues defined therein. Any holder of this document is advised that information contained hereon reflects the Company's findings at the time of its intervention only and within the limits of Client's instructions, if any. The Company's sole responsibility is to its Client and this document does not exonerate parties to a transaction from exercising all their rights and obligations under the transaction documents. This document cannot be reproduced except in full, without prior written approval of the Company. Any unauthorized alteration, forgery or falsification of the content or appearance of this document is unlawful and offenders may be prosecuted to the fullest extent of the law. Unless otherwise stated the results shown in this test report refer only to the sample(s) tested.



SGS S.T. Standards Technical Services Shanghai Co. Ltd.
Testing Center

3rd Building, No. 889 Yishan Road Xuhui District, Shanghai China 200233
中国·上海·徐汇区宜山路889号3号楼 邮编: 200233

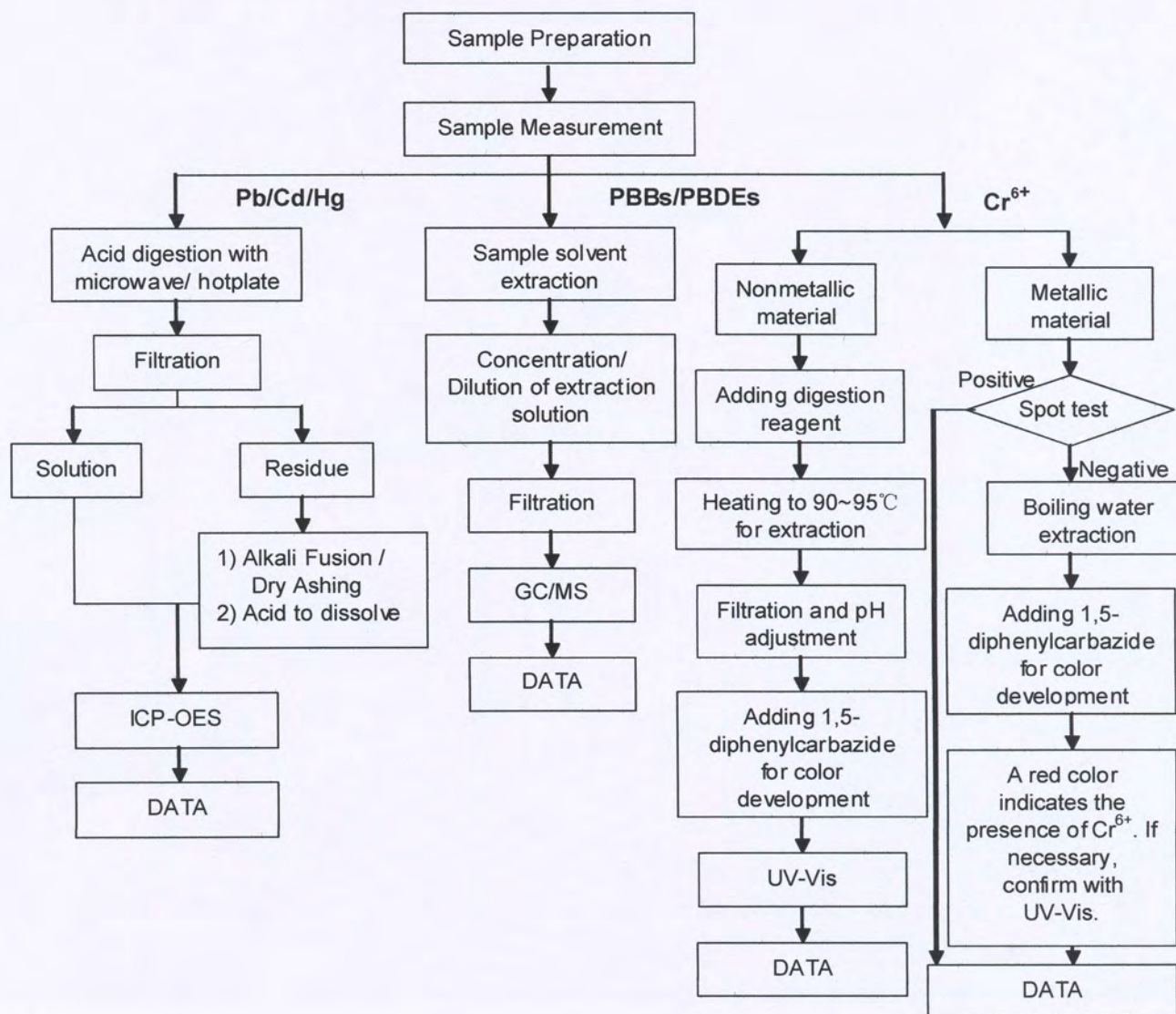
t E&E (86-21) 61402553 f E&E (86-21) 64953679 www.cn.sgs.com
HL: (86-21) 61402594 HL: (86-21) 54500353 e sgs.china@sgs.com

Member of the SGS Group (SGS SA)

ATTACHMENT S

RoHS Testing Flow Chart

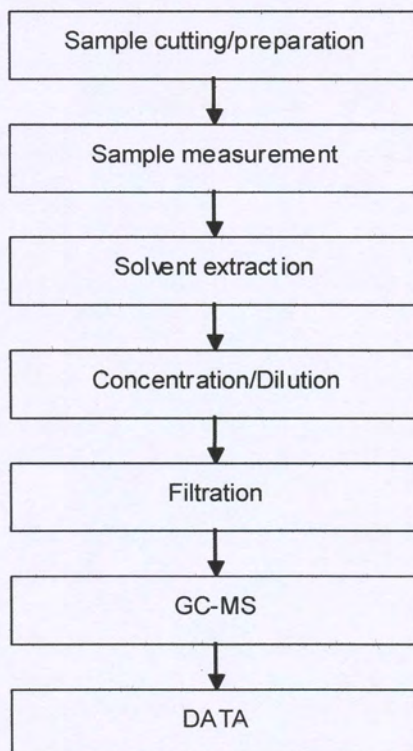
- 1) Name of the person who made testing: Allen Xiao/ Wesley Wei / Andy Zhao /Elim Lin
- 2) Name of the person in charge of testing: Jeff Zhang/George Xu/Tracy Yue
- 3) These samples were dissolved totally by pre-conditioning method according to below flow chart. (Cr⁶⁺ and PBBs/PBDEs test method excluded)



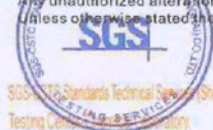
This document is issued by the Company subject to its General Conditions of Service printed overleaf, available on request or accessible at http://www.sgs.com/terms_and_conditions.htm and, for electronic format documents, subject to Terms and Conditions for Electronic Documents at www.sgs.com/terms_e-document.htm. Attention is drawn to the limitation of liability, indemnification and jurisdiction issues defined therein. Any holder of this document is advised that information contained hereon reflects the Company's findings at the time of its intervention only and within the limits of Client's instructions, if any. The Company's sole responsibility is to its Client and this document does not exonerate parties to a transaction from exercising all their rights and obligations under the transaction documents. This document cannot be reproduced except in full, without prior written approval of the Company. Any unauthorized alteration, forgery or falsification of the content or appearance of this document is unlawful and offenders may be prosecuted to the fullest extent of the law. Unless otherwise stated the results shown in this test report refer only to the sample(s) tested.

Phthalates Testing Flow Chart

- 1) Name of the person who made testing: Vickey Gui
- 2) Name of the person in charge of testing: Susan Liu

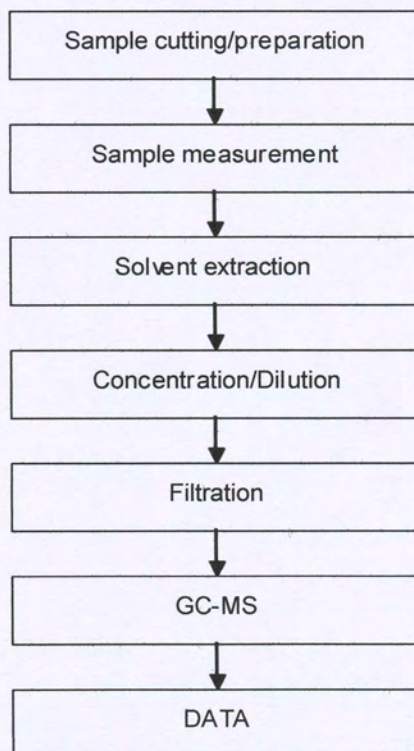


This document is issued by the Company subject to its General Conditions of Service printed overleaf, available on request or accessible at http://www.sgs.com/terms_and_conditions.htm and, for electronic format documents, subject to Terms and Conditions for Electronic Documents at www.sgs.com/terms_e-document.htm. Attention is drawn to the limitation of liability, indemnification and jurisdiction issues defined therein. Any holder of this document is advised that information contained hereon reflects the Company's findings at the time of its preparation only and within the limits of Client's instructions, if any. The Company's sole responsibility is to its Client and this document does not exonerate parties to a transaction from exercising all their rights and obligations under the transaction documents. This document cannot be reproduced except in full, without prior written approval of the Company. Any unauthorized alteration, forgery or falsification of the content or appearance of this document is unlawful and offenders may be prosecuted to the fullest extent of the law. Unless otherwise stated the results shown in this test report refer only to the sample(s) tested.

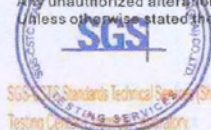


HBCDD Testing Flow Chart

- 1) Name of the person who made testing: Bill Zhong
- 2) Name of the person in charge of testing: Susan Liu

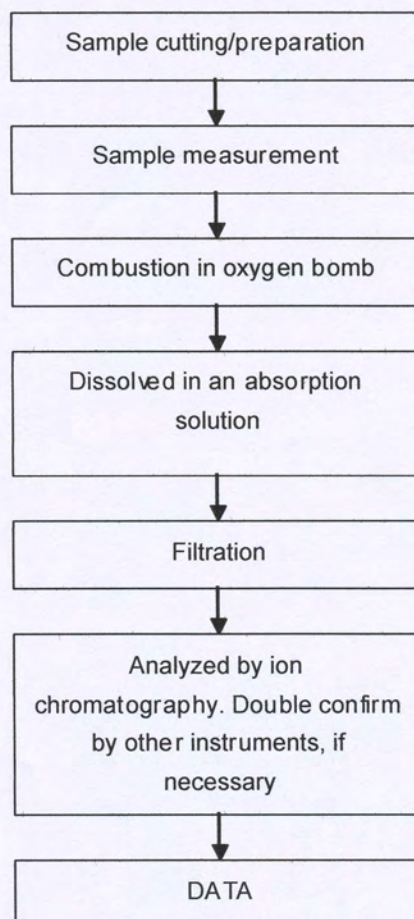


This document is issued by the Company subject to its General Conditions of Service printed overleaf, available on request or accessible at http://www.sgs.com/terms_and_conditions.htm and, for electronic format documents, subject to Terms and Conditions for Electronic Documents at www.sgs.com/terms_e-document.htm. Attention is drawn to the limitation of liability, indemnification and jurisdiction issues defined therein. Any holder of this document is advised that information contained hereon reflects the Company's findings at the time of its intervention only and within the limits of Client's instructions, if any. The Company's sole responsibility is to its Client and this document does not exonerate parties to a transaction from exercising all their rights and obligations under the transaction documents. This document cannot be reproduced except in full, without prior written approval of the Company. Any unauthorized alteration, forgery or falsification of the content or appearance of this document is unlawful and offenders may be prosecuted to the fullest extent of the law. Unless otherwise stated the results shown in this test report refer only to the sample(s) tested.



Halogen Testing Flow Chart

- 1) Name of the person who made testing: Daisy Gong
- 2) Name of the person in charge of testing: Alex Jiang



This document is issued by the Company subject to its General Conditions of Service printed overleaf, available on request or accessible at http://www.sgs.com/terms_and_conditions.htm and, for electronic format documents, subject to Terms and Conditions for Electronic Documents at www.sgs.com/terms_e-document.htm. Attention is drawn to the limitation of liability, indemnification and jurisdiction issues defined therein. Any holder of this document is advised that information contained hereon reflects the Company's findings at the time of its intervention only and within the limits of Client's instructions, if any. The Company's sole responsibility is to its Client and this document does not exonerate parties to a transaction from exercising all their rights and obligations under the transaction documents. This document cannot be reproduced except in full, without prior written approval of the Company. Any unauthorized alteration, forgery or falsification of the content or appearance of this document is unlawful and offenders may be prosecuted to the fullest extent of the law. Unless otherwise stated the results shown in this test report refer only to the sample(s) tested.



Test Report

No. SHAEC1101137305

Date: 30 Jan 2011

Page 9 of 9

Sample photo:



SGS authenticate the photo on original report only

*** End of Report ***

This document is issued by the Company subject to its General Conditions of Service printed overleaf, available on request or accessible at http://www.sgs.com/terms_and_conditions.htm and, for electronic format documents, subject to Terms and Conditions for Electronic Documents at www.sgs.com/terms_e-document.htm. Attention is drawn to the limitation of liability, indemnification and jurisdiction issues defined therein. Any holder of this document is advised that information contained hereon reflects the Company's findings at the time of its intervention only and within the limits of Client's instructions, if any. The Company's sole responsibility is to its Client and this document does not exonerate parties to a transaction from exercising all their rights and obligations under the transaction documents. This document cannot be reproduced except in full, without prior written approval of the Company. Any unauthorized alteration, forgery or falsification of the content or appearance of this document is unlawful and offenders may be prosecuted to the fullest extent of the law. Unless otherwise stated the results shown in this test report refer only to the sample(s) tested.



SGS Standards Technical Services (Shanghai) Co., Ltd.
Testing Center

3rd Building, No. 889 Yishan Road Xuhui District, Shanghai China 200233
中国·上海·徐汇区宜山路889号3号楼 邮编: 200233

t E&E (86-21) 61402553 f E&E (86-21) 64953679 www.cn.sgs.com
HL: (86-21) 61402594 HL: (86-21) 54500353 e sgs.china@sgs.com

Member of the SGS Group (SGS SA)

Test Report

No. CANEC1003713701

Date: 01 Sep 2010

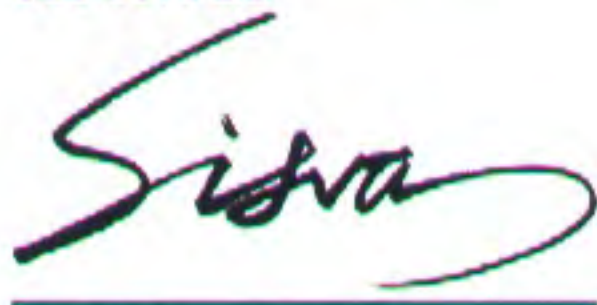
Page 1 of 10

DONGGUAN HANHUA METAL PRODUCTS CO.,LTD.
XINIUPO INDUSTRIAL AREA,DALANG TOWN,DONGGUAN CITY, P.R.
CHINA

The following sample(s) was/were submitted and identified on behalf of the clients as :
TINNED COPPER WIRE

SGS Job No. : 12696709 - SZ
SGS Internal Reference No. : 2.1
Date of Sample Received : 27 Aug 2010
Testing Period : 27 Aug 2010 - 31 Aug 2010
Test Requested : Selected test(s) as requested by client.
Test Method : Please refer to next page(s).
Test Results : Please refer to next page(s).
Conclusion : A: Based on the performed tests on submitted sample(s), the results comply with the RoHS Directive 2002/95/EC and its subsequent amendments.

Signed for and on behalf of
SGS-CSTC Ltd.



Silva Zhou
Approved Signatory

This document is issued by the Company subject to its General Conditions of Service printed overleaf, available on request or accessible at http://www.sgs.com/terms_and_conditions.htm and, for electronic format documents, subject to Terms and Conditions for Electronic Documents at www.sgs.com/terms_e-document.htm. Attention is drawn to the limitation of liability, indemnification and jurisdiction issues defined therein. Any holder of this document is advised that information contained hereon reflects the Company's findings at the time of its intervention only, and within the limits of Client's instructions, if any. The Company's sole responsibility is to its Client and this document does not exonerate parties to a transaction from exercising all their rights and obligations under the transaction documents. This document cannot be reproduced except in full, without prior written approval of the Company. Any unauthorized alteration, forgery or falsification of the content or appearance of this document is unlawful and offenders may be prosecuted to the fullest extent of the law. Unless otherwise stated, the results shown in this test report refer only to the sample(s) tested.



Test Report

No. CANEC1003713701

Date: 01 Sep 2010

Page 2 of 10

Test Results:

ID for specimen 1 : CAN10-037137.001
Description for specimen 1 : Silvery plated metal wire

A: RoHS Directive 2002/95/EC

Test Item(s)	Unit	Test Method (Reference)	Result	MDL	Limit
Cadmium (Cd)	mg/kg	IEC 62321:2008, ICP-OES	N.D.	2	100
Lead (Pb)	mg/kg	IEC 62321:2008, ICP-OES	N.D.	2	1000
Mercury (Hg)	mg/kg	IEC 62321:2008, ICP-OES	N.D.	2	1000
Hexavalent Chromium (CrVI) by boiling water extraction	-	IEC 62321:2008, UV-Vis	Negative	◇	#
Sum of PBBs	mg/kg	-	N.D.	-	1000
Monobromobiphenyl	mg/kg	IEC 62321:2008, GC-MS	N.D.	5	
Dibromobiphenyl	mg/kg	IEC 62321:2008, GC-MS	N.D.	5	
Tribromobiphenyl	mg/kg	IEC 62321:2008, GC-MS	N.D.	5	
Tetrabromobiphenyl	mg/kg	IEC 62321:2008, GC-MS	N.D.	5	
Pentabromobiphenyl	mg/kg	IEC 62321:2008, GC-MS	N.D.	5	
Hexabromobiphenyl	mg/kg	IEC 62321:2008, GC-MS	N.D.	5	
Heptabromobiphenyl	mg/kg	IEC 62321:2008, GC-MS	N.D.	5	
Octabromobiphenyl	mg/kg	IEC 62321:2008, GC-MS	N.D.	5	
Nonabromobiphenyl	mg/kg	IEC 62321:2008, GC-MS	N.D.	5	
Decabromobiphenyl	mg/kg	IEC 62321:2008, GC-MS	N.D.	5	
Sum of PBDEs	mg/kg	-	N.D.	-	1000
Monobromodiphenyl ether	mg/kg	IEC 62321:2008, GC-MS	N.D.	5	
Dibromodiphenyl ether	mg/kg	IEC 62321:2008, GC-MS	N.D.	5	
Tribromodiphenyl ether	mg/kg	IEC 62321:2008, GC-MS	N.D.	5	
Tetrabromodiphenyl ether	mg/kg	IEC 62321:2008, GC-MS	N.D.	5	
Pentabromodiphenyl ether	mg/kg	IEC 62321:2008, GC-MS	N.D.	5	
Hexabromodiphenyl ether	mg/kg	IEC 62321:2008, GC-MS	N.D.	5	
Heptabromodiphenyl ether	mg/kg	IEC 62321:2008, GC-MS	N.D.	5	
Octabromodiphenyl ether	mg/kg	IEC 62321:2008, GC-MS	N.D.	5	
Nonabromodiphenyl ether	mg/kg	IEC 62321:2008, GC-MS	N.D.	5	
Decabromodiphenyl ether	mg/kg	IEC 62321:2008, GC-MS	N.D.	5	

This document is issued by the Company subject to its General Conditions of Service printed overleaf, available on request or accessible at http://www.sgs.com/terms_and_conditions.htm and for electronic format documents, subject to Terms and Conditions for Electronic Documents at www.sgs.com/terms_e-document.htm. Attention is drawn to the limitation of liability, indemnification and jurisdiction issues defined therein. Any holder of this document is advised that information contained hereon reflects the Company's findings at the time of its inspection only and within the limits of Client's instructions, if any. The Company's sole responsibility is to its Client and this document does not exonerate parties to a transaction from exercising all their rights and obligations under the transaction documents. This document cannot be reproduced except in full, without prior written approval of the Company. Any unauthorized alteration, forgery or falsification of the content or appearance of this document is unlawful and offenders may be prosecuted to the fullest extent of the law.



Note:

1. mg/kg = ppm
2. N.D. = Not Detected (< MDL)
3. MDL = Method Detection Limit
4. ◇ = Spot-Test:

Negative = Absence of CrVI coating, Positive = Presence of CrVI coating;

(The tested sample should be further verified by boiling-water-extraction method if the spot test result is negative or cannot be confirmed.)

Boiling-water-extraction:

Negative = Absence of CrVI coating

Positive = Presence of CrVI coating; the detected concentration in boiling-water-extraction solution is equal or greater than 0.02 mg/kg with 50 cm² sample surface area.

Storage conditions and production date of the tested sample are unavailable and thus results of Cr(VI) represent status of the sample at the time of testing.

5. # = Positive indicates the presence of CrVI on the tested areas.

Negative indicates the absence of CrVI on the tested areas.

6. "-" = Not regulated

B: PFOA & PFOS (Perfluorooctanoic acid & Perfluorooctane sulfonates)

Test Item(s)	Unit	Test Method (Reference)	Result	MDL
Perfluorooctanoic acid (PFOA)	µg/m ²	EPA 3550C: 2007, LC-MS	N.D.	1
Perfluorooctane sulfonates (PFOS)	µg/m ²	EPA 3550C: 2007, LC-MS	N.D.	1
PFOS Acid				
PFOS Metal Salt				
PFOS Amide				

Note:

1. mg/kg = ppm
2. N.D. = Not Detected (< MDL)
3. MDL = Method Detection Limit

For reference: Entry 53 of Regulation (EC) No 552/2009 amending Annex XVII of REACH Regulation (EC) No 1907/2006 (previously restricted under Directive 2006/122/EC):

- (1) May not be placed on the market or used as a substance or constituent of preparations in a concentration equal to or higher than 0,005 % by mass.
- (2) May not be placed on the market in semi-finished products or articles, or parts thereof, if the concentration of PFOS is equal to or higher than 0,1 % by mass calculated with reference to the mass of structurally or microstructurally distinct parts that contain PFOS or, for textiles or other coated materials, if the amount of PFOS is equal to or higher than 1 µg /m² of the coated material.

This document is issued by the Company subject to its General Conditions of Service printed overleaf, available on request or accessible at http://www.sgs.com/terms_and_conditions.htm and, for electronic format documents, subject to Terms and Conditions for Electronic Documents at www.sgs.com/terms_e-document.htm. Attention is drawn to the limitation of liability, indemnification and jurisdiction issues defined therein. Any holder of this document is advised that information contained hereon reflects the Company's findings at the time of its issuance only and within the limits of Client's instructions, if any. The Company's sole responsibility is to its Client and this document does not exonerate parties to a transaction from exercising all their rights and obligations under the transaction documents. This document cannot be reproduced except in full, without prior written approval of the Company. Any unauthorized alteration, forgery or falsification of the content or appearance of this document is unlawful and offenders may be prosecuted to the fullest extent of the law. Unless otherwise stated, the results shown in this test report refer only to the sample(s) tested.



GZCM 4682812

Test Report

No. CANEC1003713701

Date: 01 Sep 2010

Page 4 of 10

ID for specimen 2 : CAN10-037137.002
Description for specimen 2 : Silvery plating on metal wire

C: Elementary Analysis

Test Item(s)	Unit	Test Method (Reference)	Result	MDL
Cadmium (Cd)	mg/kg	IEC 62321:2008 application of modified digestion by surface etching, ICP OES	N.D.	10
Lead (Pb)	mg/kg	IEC 62321:2008 application of modified digestion by surface etching, ICP OES	61	10
Mercury (Hg)	mg/kg	IEC 62321:2008 application of modified digestion by surface etching, ICP OES	N.D.	10

Note:

1. mg/kg = ppm
2. N.D. = Not Detected (< MDL)
3. MDL = Method Detection Limit

This document is issued by the Company subject to its General Conditions of Service printed overleaf, available on request or accessible at http://www.sgs.com/terms_and_conditions.htm and, for electronic format documents, subject to Terms and Conditions for Electronic Documents at www.sgs.com/terms_e-document.htm. Attention is drawn to the limitation of liability, indemnification and jurisdiction issues defined therein. Any holder of this document is advised that information contained herein reflects the Company's findings at the time of its inspection and within the limits of Client's instructions, if any. The Company's sole responsibility is to its Client and this document does not exonerate parties to a transaction from exercising all their rights and obligations under the transaction documents. This document cannot be reproduced except in full, without prior written approval of the Company. Any unauthorized alteration, forgery or falsification of the content or appearance of this document is unlawful and offenders may be prosecuted to the fullest extent of the law. Unless otherwise stated, the results shown in this test report refer only to the sample(s) tested.



GZCM 4682813

SGS Standards Services (China) Co., Ltd.
Guangzhou Testing Laboratory

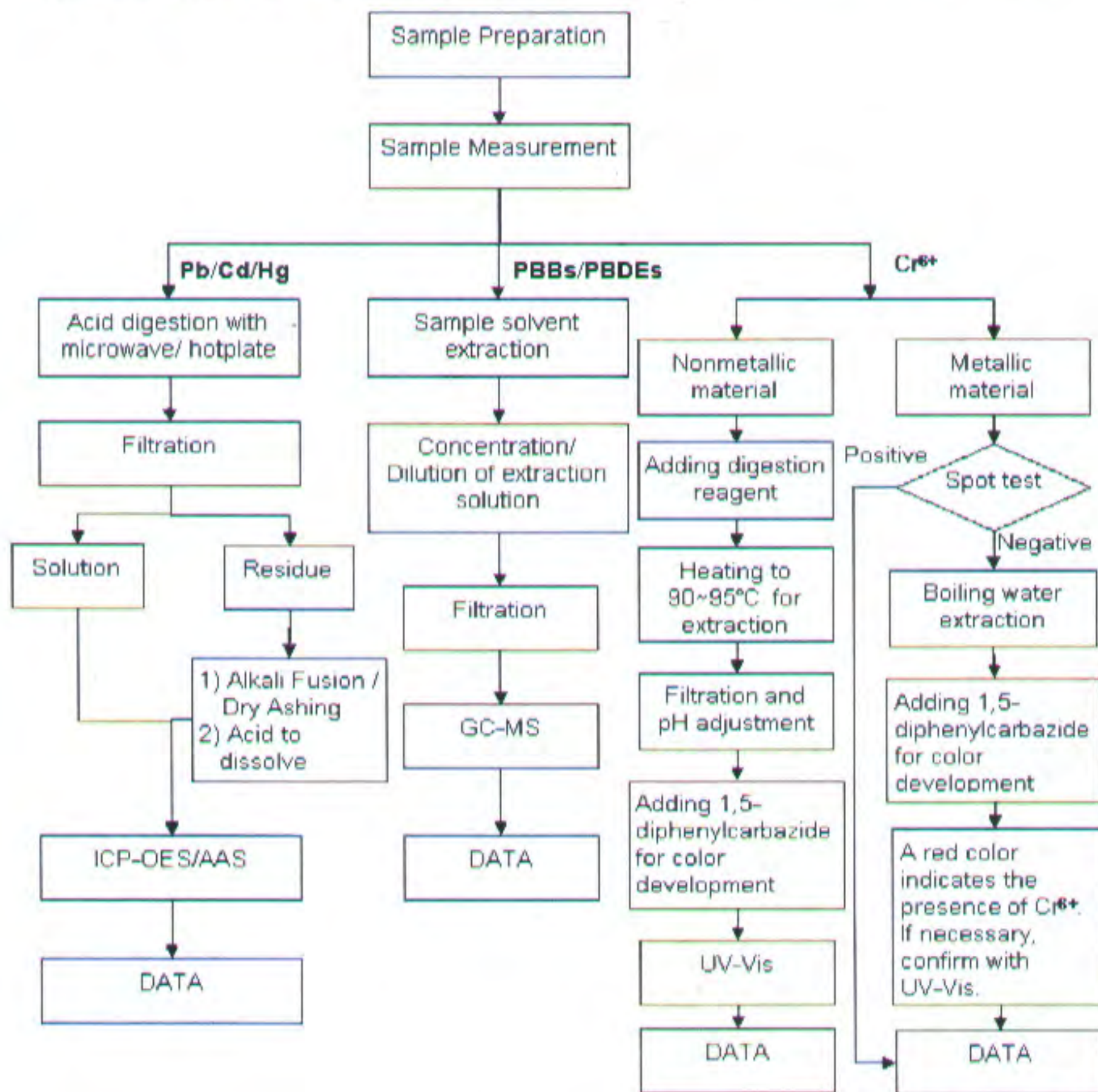
196 Kexu Road, Science Park, Guangzhou Economic & Technology Development District, Guangzhou, China 510663
中国·广州·经济技术开发区科学城科珠路198号

1 (86-20) 82155555 f (86-20) 82075113 www.cn.sgs.com
邮编: 510663 1 (86-20) 82155555 f (86-20) 82075113 e sgs.china@sgs.com

ATTACHMENTS

RoHS Testing Flow Chart

- 1) Name of the person who made testing: Bella Wang / Cutey Yu / Ross Zhan
- 2) Name of the person in charge of testing: Adams Yu / Ryan Yang
- 3) These samples were dissolved totally by pre-conditioning method according to below flow chart (Cr⁶⁺ and PBBs/PBDEs test method excluded).



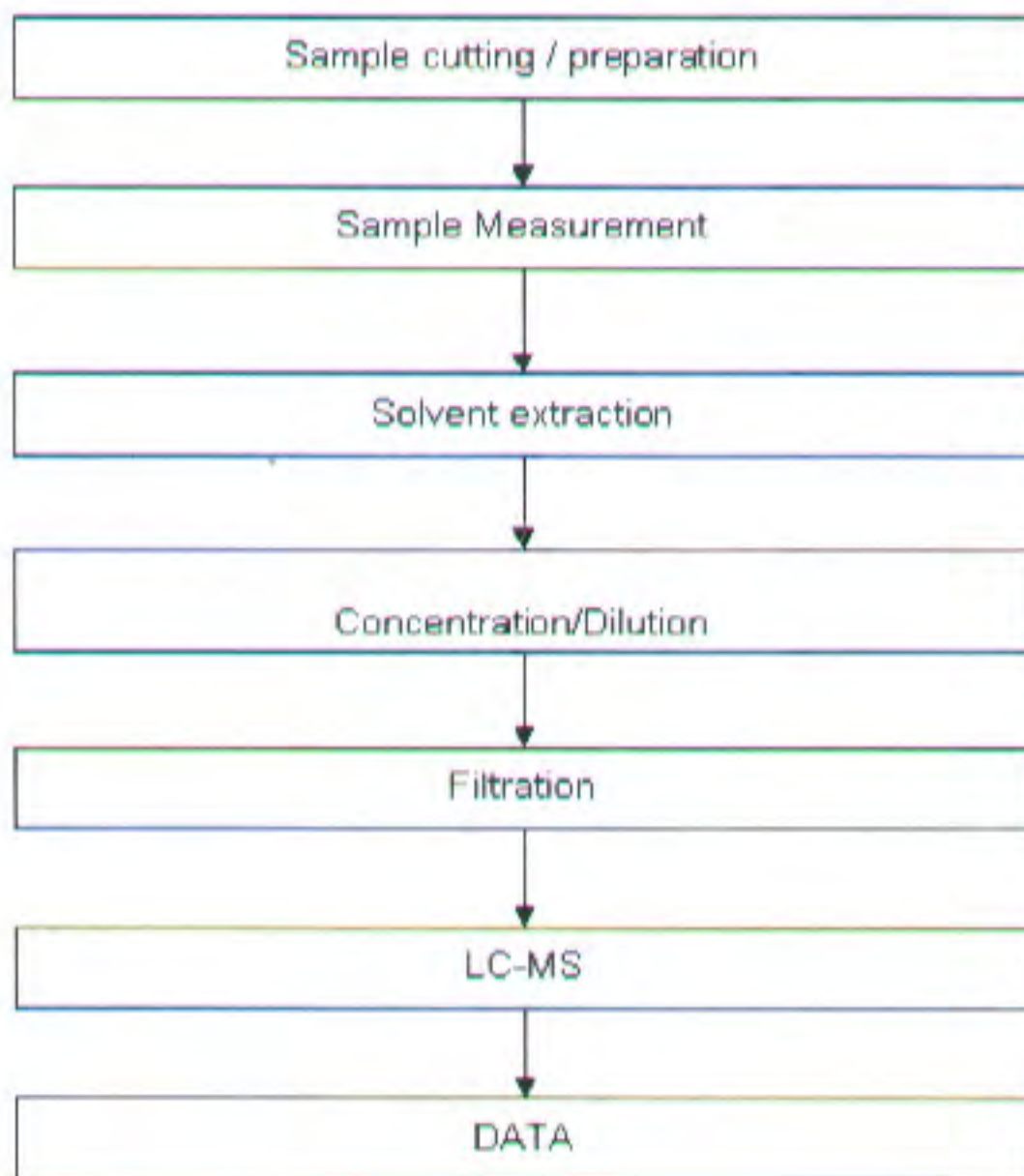
This document is issued by the Company subject to its General Conditions of Service printed overleaf, available on request or accessible at http://www.sgs.com/terms_and_conditions.htm and, for electronic format documents, subject to Terms and Conditions for Electronic Documents at www.sgs.com/terms_e-document.htm. Attention is drawn to the limitation of liability, indemnification and jurisdiction issues defined therein. Any holder of this document is advised that information contained hereon reflects the Company's findings at the time of its inspection only, and within the limits of Client's instructions, if any. The Company's sole responsibility is to its Client and this document does not exonerate parties to a transaction from exercising all their rights and obligations under the transaction documents. This document cannot be reproduced except in full, without prior written approval of the Company. Any unauthorized alteration, forgery or falsification of the content or appearance of this document is unlawful and offenders may be prosecuted to the fullest extent of the law. Unless otherwise stated, the results shown in this test report refer only to the sample(s) tested.



ATTACHMENTS

PFOA / PFOS Testing Flow Chart

- 1) Name of the person who made testing: Cindy Huang
- 2) Name of the person in charge of testing: Ryan Yang



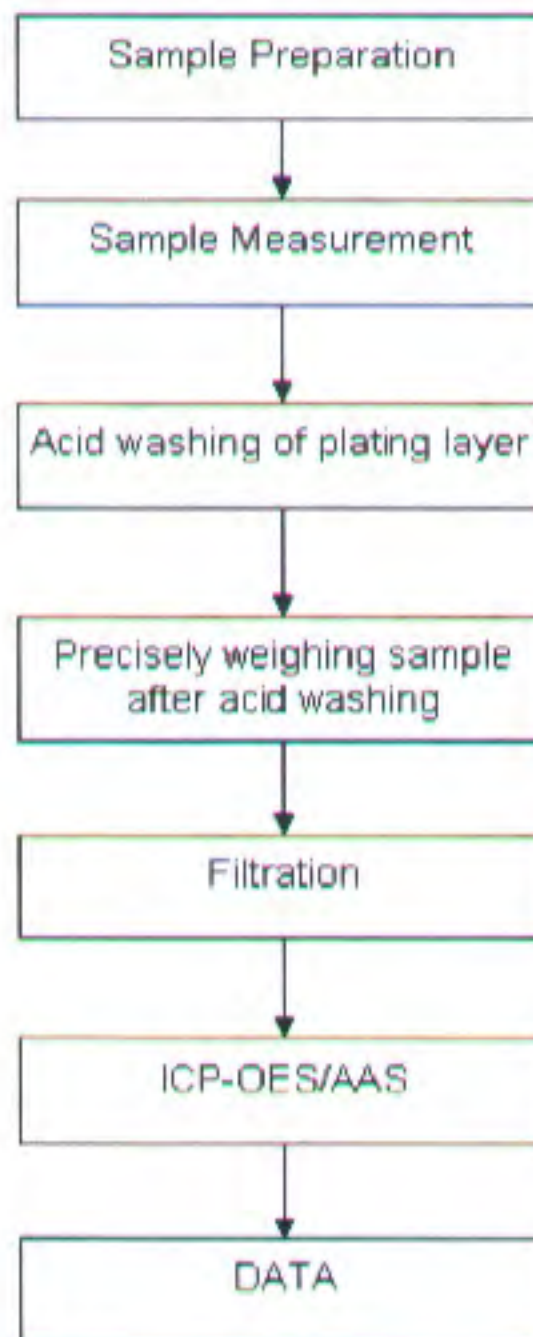
This document is issued by the Company subject to its General Conditions of Service printed overleaf, available on request or accessible at http://www.sgs.com/terms_and_conditions.htm and, for electronic format documents, subject to Terms and Conditions for Electronic Documents at www.sgs.com/terms_e-document.htm. Attention is drawn to the limitation of liability, indemnification and jurisdiction issues defined therein. Any holder of this document is advised that information contained hereon reflects the Company's findings at the time of its information only and within the limits of Client's instructions, if any. The Company's sole responsibility is to its Client and this document does not exonerate parties to a transaction from exercising all their rights and obligations under the transaction documents. This document cannot be reproduced except in full, without prior written approval of the Company. Any unauthorized alteration, forgery or falsification of the content or appearance of this document is unlawful and offenders may be prosecuted to the fullest extent of the law. Unless otherwise stated, the results shown in this test report refer only to the sample(s) tested.



ATTACHMENTS

Plating Cd Testing Flow Chart

- 1) Name of the person who made testing: Bella Wang
- 2) Name of the person in charge of testing: Adams Yu



Attention: To check the authenticity of testing/inspection report & certificate, please contact us at telephone: (86-755)83071443, or email: CN.Detectlab@sgs.com

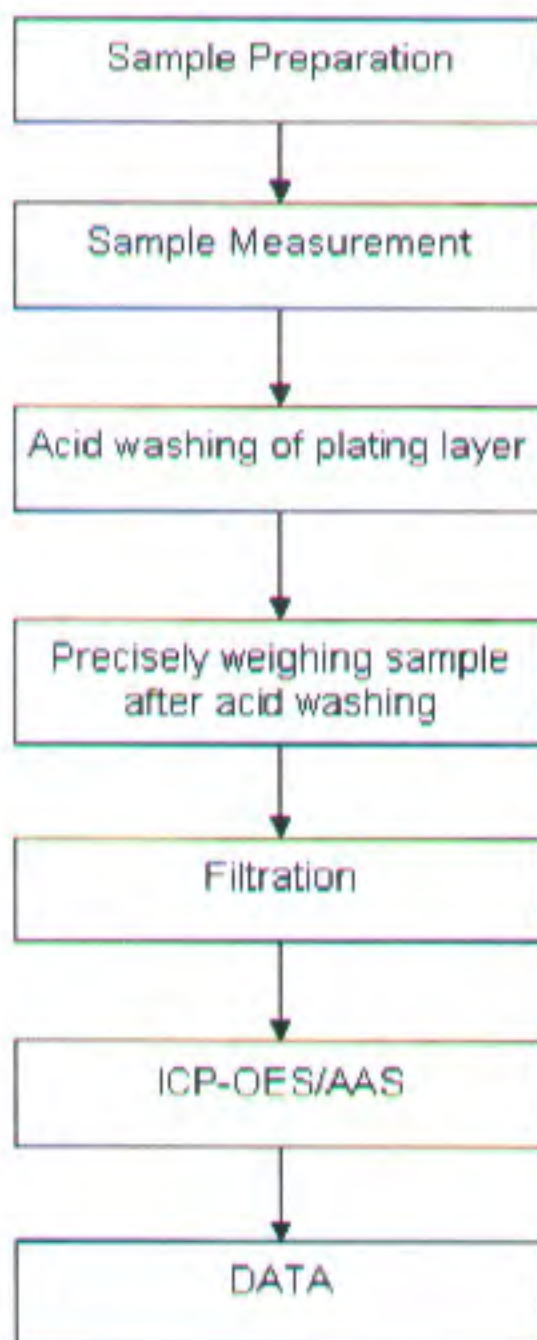
This document is issued by the Company subject to its General Conditions of Service printed overleaf, available on request or accessible at http://www.sgs.com/terms_and_conditions.htm and, for electronic format documents, subject to Terms and Conditions for Electronic Documents at www.sgs.com/terms_e-document.htm. Attention is drawn to the limitation of liability, indemnification and jurisdiction issues defined therein. Any holder of this document is advised that information contained hereon reflects the Company's findings at the time of its inspection only and within the limits of Client's instructions, if any. The Company's sole responsibility is to its Client and this document does not exonerate parties to a transaction from exercising all their rights and obligations under the transaction documents. This document cannot be reproduced except in full, without prior written approval of the Company. Any unauthorized alteration, forgery or falsification of the content or appearance of this document is unlawful and offenders may be prosecuted to the fullest extent of the law. Unless otherwise stated, the results shown in this test report refer only to the sample(s) tested.



ATTACHMENTS

Plating Pb Testing Flow Chart

- 1) Name of the person who made testing: Bella Wang
- 2) Name of the person in charge of testing: Adams Yu



Attention: To check the authenticity of testing / inspection report & certificate, please contact us at telephone: (86-755)83071443, or email: CN_Doccheck@sgs.com

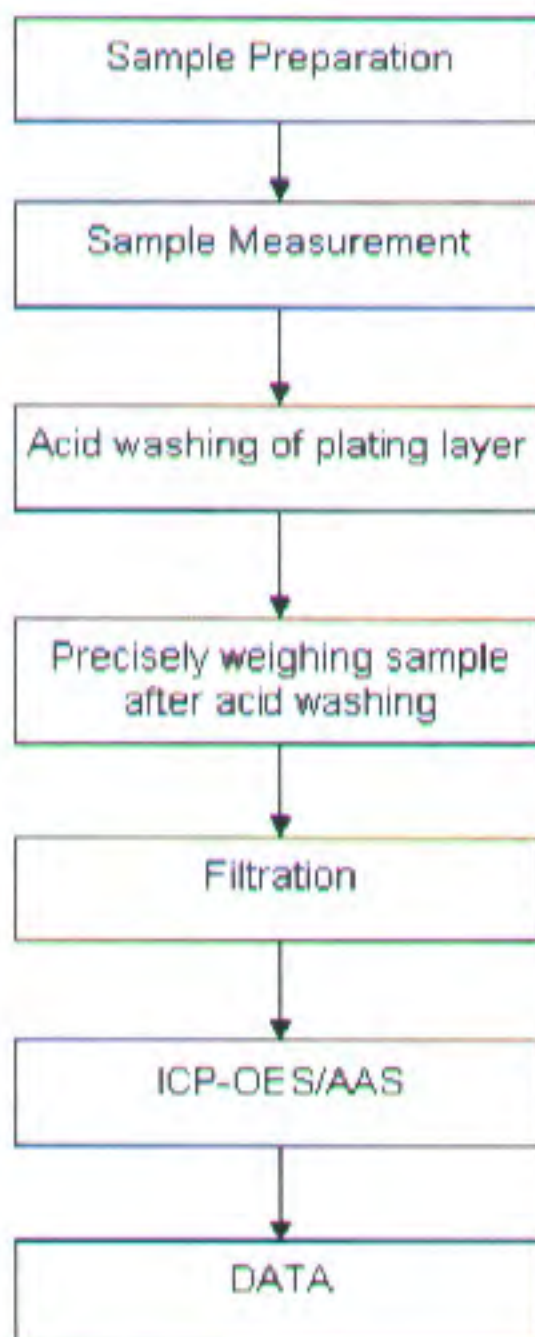
This document is issued by the Company subject to its General Conditions of Service printed overleaf, available on request or accessible at http://www.sgs.com/terms_and_conditions.htm and for electronic format documents, subject to Terms and Conditions for Electronic Documents at www.sgs.com/terms_e-document.htm. Attention is drawn to the limitation of liability, indemnification and jurisdiction issues defined therein. Any holder of this document is advised that information contained hereon reflects the Company's findings at the time of its issue only and within the limits of Client's instructions, if any. The Company's sole responsibility is to its Client and this document does not exonerate parties to a transaction from exercising all their rights and obligations under the transaction documents. This document cannot be reproduced except in full, without prior written approval of the Company. Any unauthorized alteration, forgery or falsification of the content or appearance of this document is unlawful and offenders may be prosecuted to the fullest extent of the law. Unless otherwise stated, the results shown in this test report refer only to the sample(s) tested.



ATTACHMENTS

Plating Hg Testing Flow Chart

- 1) Name of the person who made testing: Bella Wang
- 2) Name of the person in charge of testing: Adams Yu



Attention: To check the authenticity of testing/inspection report & certificate, please contact us at telephone: (86-755) 81071443, or email: CN.Detect@sgs.com

This document is issued by the Company subject to its General Conditions of Service printed overleaf, available on request or accessible at http://www.sgs.com/terms_and_conditions.htm and for electronic format documents, subject to Terms and Conditions for Electronic Documents at www.sgs.com/terms-e-document.htm. Attention is drawn to the limitation of liability, jurisdiction and jurisdiction issues defined therein. Any holder of this document is advised that information contained hereon reflects the Company's findings at the time of its inspection only, and within the limits of Client's instructions, if any. The Company's sole responsibility is to its Client and this document does not exonerate parties to a transaction from exercising all their rights and obligations under the transaction documents. This document cannot be reproduced except in full, without prior written approval of the Company. Any unauthorized alteration, forgery or falsification of the content or appearance of this document is unlawful and offenders may be prosecuted to the fullest extent of the law. Unless otherwise stated, the results shown in this test report refer only to the sample(s) tested.



Sample photo:



SGS authenticate the photo on original report only
*** End of Report ***

Attention: To check the authenticity of testing/inspection report & certificate, please contact us at telephone: (86-755) 83071443, or email: CN.Doccheck@sgs.com

This document is issued by the Company subject to its General Conditions of Service printed overleaf, available on request or accessible at http://www.sgs.com/terms_and_conditions.htm and, for electronic format documents, subject to Terms and Conditions for Electronic Documents at www.sgs.com/terms_e-document.htm. Attention is drawn to the limitation of liability, indemnification and jurisdiction issues defined therein. Any holder of this document is advised that information contained hereon reflects the Company's findings at the time of its information only and within the limits of Client's instructions, if any. The Company's sole responsibility is to its Client and this document does not exonerate parties to a transaction from exercising all their rights and obligations under the transaction documents. This document cannot be reproduced except in full, without prior written approval of the Company. Any unauthorized alteration, forgery or falsification of the content or appearance of this document is unlawful and offenders may be prosecuted to the fullest extent of the law. Unless otherwise stated, the results shown in this test report refer only to the sample(s) tested.





TEST REPORT

NUMBER: SZHH00517545

APPLICANT: LITTELFUSE, INC.
8755 WEST HIGGINS ROAD SUITE 500
CHICAGO IL 60631 USA

DATE: Aug 17, 2010

ATTN: KRISTEEN BACILA/ARSENIO CESISTA JR.

SAMPLE DESCRIPTION:

ONE (1) SUBMITTED SAMPLE SAID TO BE **TRANSPARENT YELLOW MATERIAL.**

PART DESCRIPTION : HOT MELT.
PART NUMBER : MS267.
DATE SAMPLE RECEIVED : AUG 12, 2010.
DATE TEST STARTED : AUG 12, 2010.



TESTS CONDUCTED:

AS REQUESTED BY THE APPLICANT, FOR DETAILS REFER TO ATTACHED PAGE(S)

AUTHORIZED BY:
FOR INTERTEK TESTING SERVICES
SHENZHEN LTD.




BEN N.L. LIN
GENERAL MANAGER

**TEST REPORT**

NUMBER: SZHH00517545

TESTS CONDUCTED

1 RoHS CHEMICAL TEST

(A) TEST RESULT SUMMARY:

TESTING ITEM	RESULT
CADMIUM (Cd) CONTENT (mg/kg)	ND (<2)
LEAD (Pb) CONTENT (mg/kg)	ND (<2)
MERCURY (Hg) CONTENT (mg/kg)	ND (<2)
CHROMIUM (VI)(Cr ⁶⁺) CONTENT (mg/kg)	ND (<1)
POLYBROMINATED BIPHENYLS (PBBs) (mg/kg)	
MONOBROMOBIPHENYL (MonoBB)	ND (<5)
DIBROMOBIPHENYL (DiBB)	ND (<5)
TRIBROMOBIPHENYL (TriBB)	ND (<5)
TETRABROMOBIPHENYL (TetraBB)	ND (<5)
PENTABROMOBIPHENYL (PentaBB)	ND (<5)
HEXABROMOBIPHENYL (HexaBB)	ND (<5)
HEPTABROMOBIPHENYL (HeptaBB)	ND (<5)
OCTABROMOBIPHENYL (OctaBB)	ND (<5)
NONABROMOBIPHENYL (NonaBB)	ND (<5)
DECABROMOBIPHENYL (DecaBB)	ND (<5)
POLYBROMINATED DIPHENYL ETHERS (PBDEs) (mg/kg)	
MONOBROMODIPHENYL ETHER (MonoBDE)	ND (<5)
DIBROMODIPHENYL ETHER (DiBDE)	ND (<5)
TRIBROMODIPHENYL ETHER (TriBDE)	ND (<5)
TETRABROMODIPHENYL ETHER (TetraBDE)	ND (<5)
PENTABROMODIPHENYL ETHER (PentaBDE)	ND (<5)
HEXABROMODIPHENYL ETHER (HexaBDE)	ND (<5)
HEPTABROMODIPHENYL ETHER (HeptaBDE)	ND (<5)
OCTABROMODIPHENYL ETHER (OctaBDE)	ND (<5)
NONABROMODIPHENYL ETHER (NonaBDE)	ND (<5)
DECABROMODIPHENYL ETHER (DecaBDE)	ND (<5)

CHEMIST: LV LINNA

mg/kg = MILLIGRAM PER KILOGRAM = ppm

< = LESS THAN

ND = NOT DETECTED

**TEST REPORT**

NUMBER: SZHH00517545

TESTS CONDUCTED

(B) RoHS REQUIREMENT:

RESTRICTED SUBSTANCES	LIMITS
CADMIUM (Cd)	0.01% (100 ppm)
LEAD (Pb)	0.1% (1000 ppm)
MERCURY (Hg)	0.1% (1000 ppm)
CHROMIUM (VI) (Cr ⁶⁺)	0.1% (1000 ppm)
POLYBROMINATED BIPHENYLS (PBBs)	0.1% (1000 ppm)
POLYBROMINATED DIPHENYL ETHERS (PBDEs)	0.1% (1000 ppm)

THE ABOVE LIMITS WERE QUOTED FROM 2002/95/EC AND AMENDMENT 2005/618/EC FOR HOMOGENEOUS MATERIAL.

(C) TEST METHOD:

TESTING ITEM	TESTING METHOD	REPORTING LIMIT
CADMIUM (Cd) CONTENT	WITH REFERENCE TO IEC 62321 EDITION 1.0:2008, BY ACID DIGESTION AND DETERMINED BY ICP - OES	2 mg/kg
LEAD (Pb) CONTENT	WITH REFERENCE TO IEC 62321 EDITION 1.0:2008, BY ACID DIGESTION AND DETERMINED BY ICP - OES	2 mg/kg
MERCURY (Hg) CONTENT	WITH REFERENCE TO IEC 62321 EDITION 1.0:2008, BY ACID DIGESTION AND DETERMINED BY ICP - OES	2 mg/kg
CHROMIUM (VI) (Cr ⁶⁺) CONTENT	WITH REFERENCE TO IEC 62321 EDITION 1.0:2008, BY ALKALINE DIGESTION AND DETERMINED BY UV-VIS SPECTROPHOTOMETER	1 mg/kg
POLYBROMINATED BIPHENYLS (PBBs) & POLYBROMINATED DIPHENYL ETHERS (PBDEs)	WITH REFERENCE TO IEC 62321 EDITION 1.0:2008, BY SOLVENT EXTRACTION AND DETERMINED BY GC/MS AND FURTHER HPLC CONFIRMATION WHEN NECESSARY	5 mg/kg

DATE SAMPLE RECEIVED : AUG 12, 2010

TESTING PERIOD : AUG 12, 2010 TO AUG 14, 2010

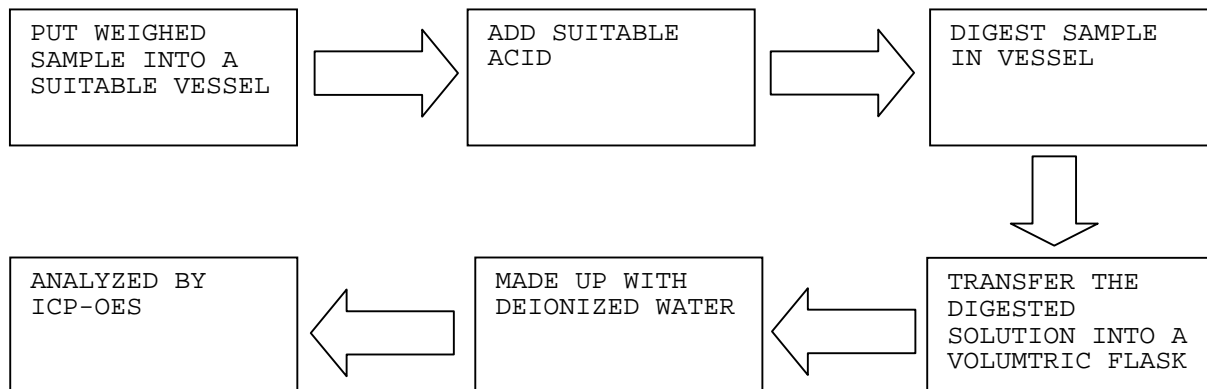
TEST REPORT

NUMBER: SZHH00517545

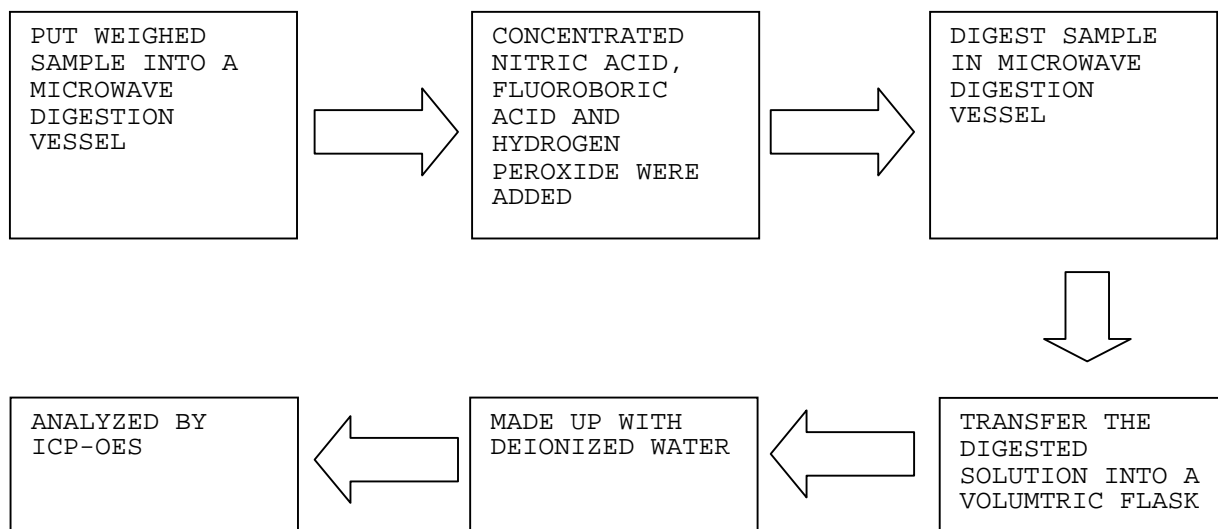
TESTS CONDUCTED

(D) MEASUREMENT FLOWCHART:

1. TEST FOR Cd/Pb CONTENTS



2. TEST FOR Hg CONTENT

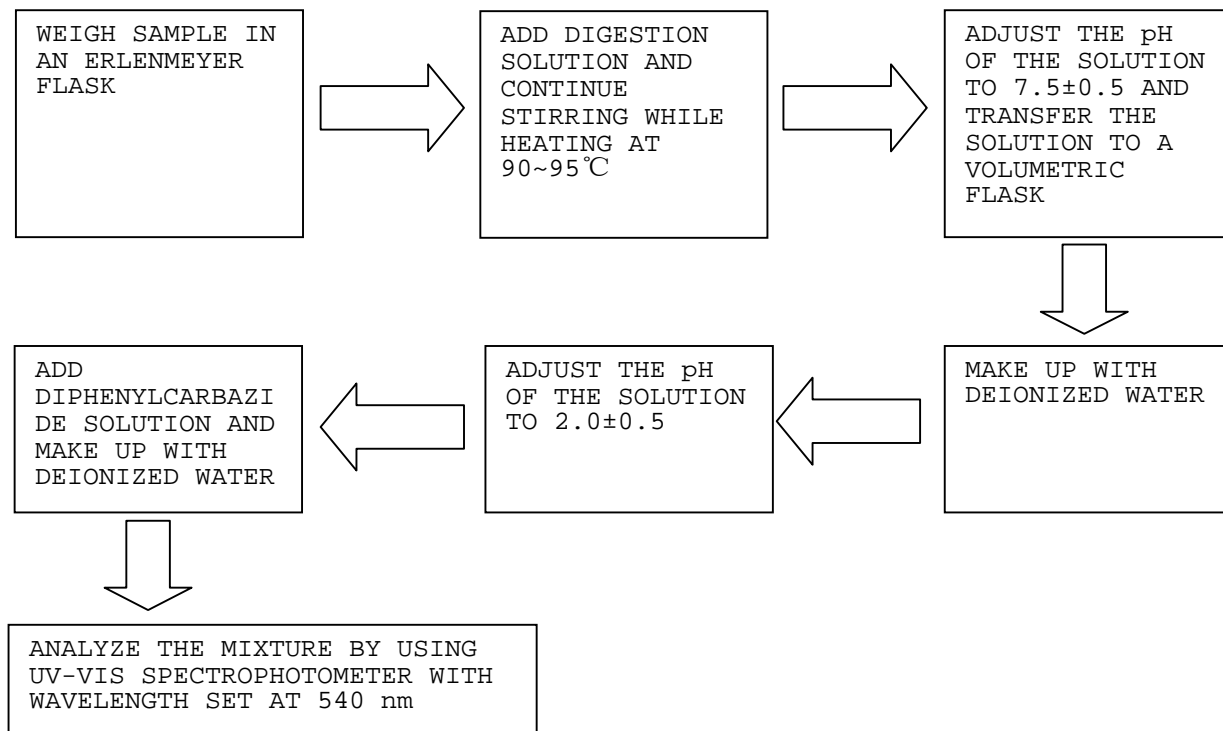


TEST REPORT

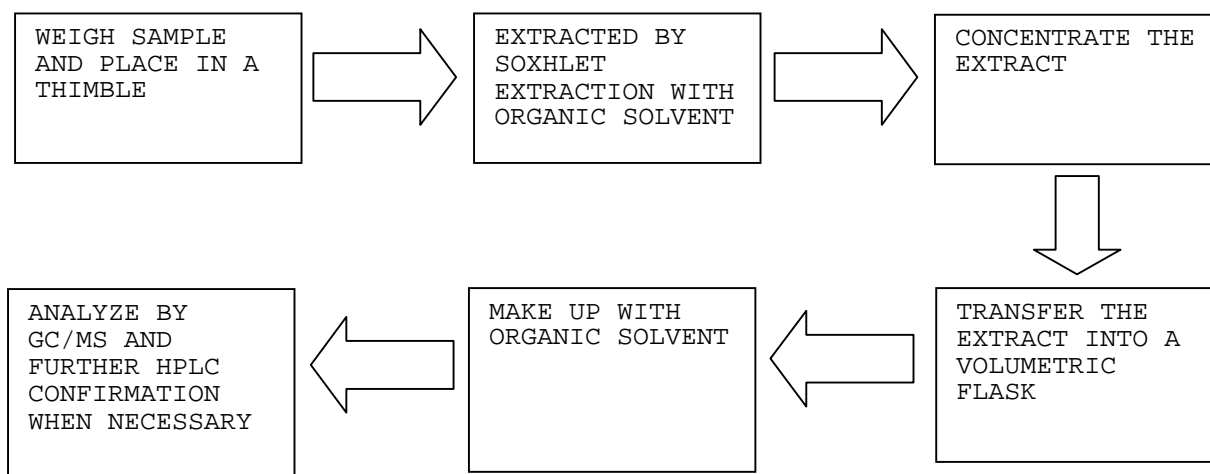
NUMBER: SZHH00517545

TESTS CONDUCTED

3. TEST FOR CHROMIUM (VI) (Cr^{6+}) CONTENT (ALKALINE DIGESTION)



4. TEST FOR PBBs/PBDEs CONTENTS



**TEST REPORT**

NUMBER: SZHH00517545

TESTS CONDUCTED

2 (I) TEST RESULT SUMMARY :

HALOGEN CONTENT :

<u>TESTING ITEM</u>	<u>RESULT (ppm)</u>
FLUORINE (F) CONTENT	ND
CHLORINE (Cl) CONTENT	ND
BROMINE (Br) CONTENT	ND
IODINE (I) CONTENT	ND

REMARKS : ppm = PARTS PER MILLION
ND = NOT DETECTED

(II) TEST METHOD :

<u>TESTING ITEM</u>	<u>TESTING METHOD</u>	<u>REPORTING LIMIT</u>
HALOGEN (F, Cl, Br, I) CONTENT	WITH REFERENCE TO BS EN 14582:2007 BY CALORIMETRIC BOMB AND DETERMINED BY ION CHROMATOGRAPHY	50 ppm

REMARK : REPORTING LIMIT = QUANTITATION LIMIT OF ANALYTE IN SAMPLE

DATE SAMPLE RECEIVED : AUG 12, 2010

TESTING PERIOD : AUG 12, 2010 TO AUG 16, 2010

TEST REPORT

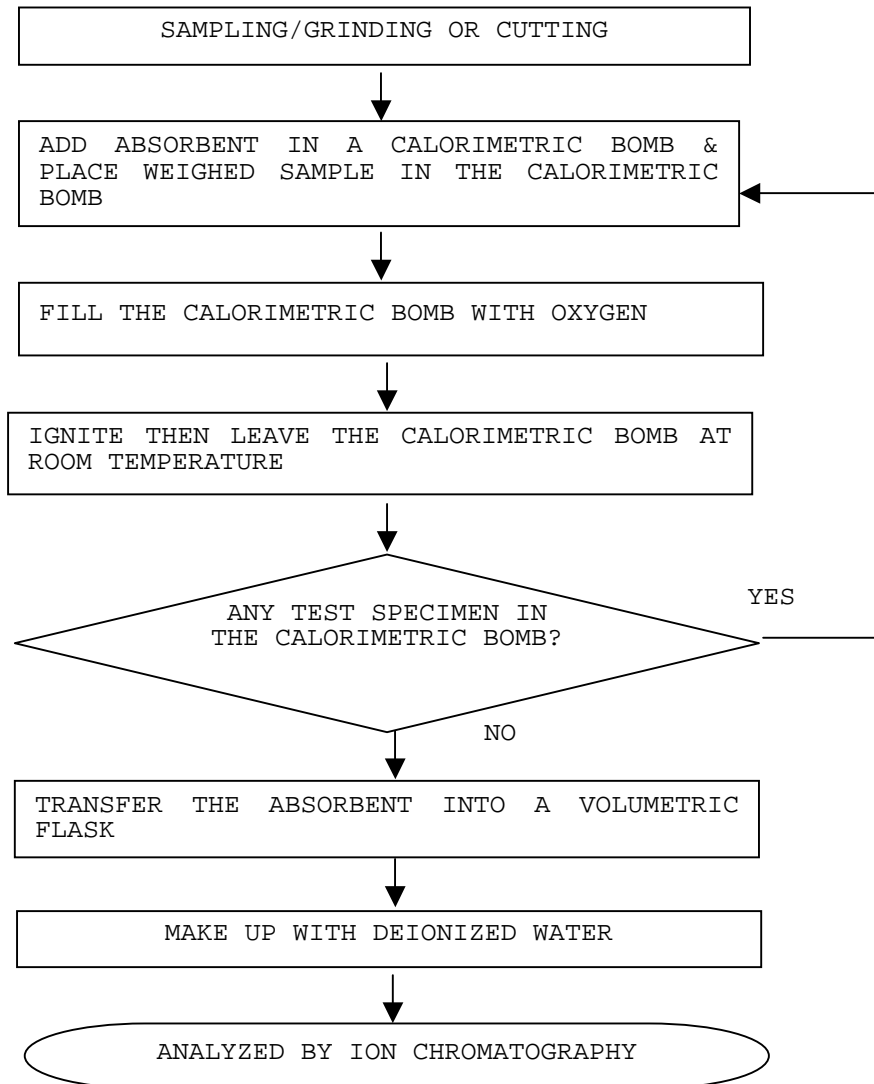
NUMBER: SZHH00517545

TESTS CONDUCTED

(III) MEASUREMENT FLOWCHART:

TEST FOR HALOGEN CONTENT

REFERENCE METHOD: BS EN 14582:2007



END OF REPORT



TEST REPORT

NUMBER: SZHH0049776109

APPLICANT: LITTELFUSE, INC.
8755 WEST HIGGINS ROAD SUITE 500
CHICAGO IL 60631 USA

DATE: Jun 19, 2010

ATTN: KRISTEEN BACILA/ARSENIO CESISTA JR.

SAMPLE DESCRIPTION:

ONE (1) SUBMITTED SAMPLE SAID TO BE **WHITE CERAMIC**.
PART DESCRIPTION : ALUMINA INSULATOR.
DATE SAMPLE RECEIVED : JUN 12, 2010.
DATE TEST STARTED : JUN 12, 2010.



TESTS CONDUCTED:

AS REQUESTED BY THE APPLICANT, FOR DETAILS REFER TO ATTACHED PAGE(S)

AUTHORIZED BY:
FOR INTERTEK TESTING SERVICES
SHENZHEN LTD.



KARBON M.Y. WU
GENERAL MANAGER

**TEST REPORT**

NUMBER: SZHH0049776109

TESTS CONDUCTED

RoHS CHEMICAL TEST

(A) TEST RESULT SUMMARY:

TESTING ITEM	RESULT
CADMIUM (Cd) CONTENT (mg/kg)	ND (<2)
LEAD (Pb) CONTENT (mg/kg)	ND (<2)
MERCURY (Hg) CONTENT (mg/kg)	ND (<2)
CHROMIUM (VI)(Cr ⁶⁺) CONTENT (mg/kg)	ND (<1)
POLYBROMINATED BIPHENYLS (PBBs) (mg/kg)	
MONOBROMOBIPHENYL (MonoBB)	ND (<5)
DIBROMOBIPHENYL (DiBB)	ND (<5)
TRIBROMOBIPHENYL (TriBB)	ND (<5)
TETRABROMOBIPHENYL (TetraBB)	ND (<5)
PENTABROMOBIPHENYL (PentaBB)	ND (<5)
HEXABROMOBIPHENYL (HexaBB)	ND (<5)
HEPTABROMOBIPHENYL (HeptaBB)	ND (<5)
OCTABROMOBIPHENYL (OctaBB)	ND (<5)
NONABROMOBIPHENYL (NonaBB)	ND (<5)
DECABROMOBIPHENYL (DecaBB)	ND (<5)
POLYBROMINATED DIPHENYL ETHERS (PBDEs) (mg/kg)	
MONOBROMODIPHENYL ETHER (MonoBDE)	ND (<5)
DIBROMODIPHENYL ETHER (DiBDE)	ND (<5)
TRIBROMODIPHENYL ETHER (TriBDE)	ND (<5)
TETRABROMODIPHENYL ETHER (TetraBDE)	ND (<5)
PENTABROMODIPHENYL ETHER (PentaBDE)	ND (<5)
HEXABROMODIPHENYL ETHER (HexaBDE)	ND (<5)
HEPTABROMODIPHENYL ETHER (HeptaBDE)	ND (<5)
OCTABROMODIPHENYL ETHER (OctaBDE)	ND (<5)
NONABROMODIPHENYL ETHER (NonaBDE)	ND (<5)
DECABROMODIPHENYL ETHER (DecaBDE)	ND (<5)

CHEMIST: LV LINNA

mg/kg = MILLIGRAM PER KILOGRAM = ppm

< = LESS THAN

ND = NOT DETECTED

**TEST REPORT**

NUMBER: SZHH0049776109

TESTS CONDUCTED

(B) RoHS REQUIREMENT:

RESTRICTED SUBSTANCES	LIMITS
CADMIUM (Cd)	0.01% (100 ppm)
LEAD (Pb)	0.1% (1000 ppm)
MERCURY (Hg)	0.1% (1000 ppm)
CHROMIUM (VI) (Cr ⁶⁺)	0.1% (1000 ppm)
POLYBROMINATED BIPHENYLS (PBBs)	0.1% (1000 ppm)
POLYBROMINATED DIPHENYL ETHERS (PBDEs)	0.1% (1000 ppm)

THE ABOVE LIMITS WERE QUOTED FROM 2002/95/EC AND AMENDMENT 2005/618/EC FOR HOMOGENEOUS MATERIAL.

(C) TEST METHOD:

TESTING ITEM	TESTING METHOD	REPORTING LIMIT
CADMIUM (Cd) CONTENT	WITH REFERENCE TO IEC 62321 EDITION 1.0:2008, BY ACID DIGESTION AND DETERMINED BY ICP - OES	2 mg/kg
LEAD (Pb) CONTENT	WITH REFERENCE TO IEC 62321 EDITION 1.0:2008, BY ACID DIGESTION AND DETERMINED BY ICP - OES	2 mg/kg
MERCURY (Hg) CONTENT	WITH REFERENCE TO IEC 62321 EDITION 1.0:2008, BY ACID DIGESTION AND DETERMINED BY ICP - OES	2 mg/kg
CHROMIUM (VI) (Cr ⁶⁺) CONTENT	WITH REFERENCE TO IEC 62321 EDITION 1.0:2008, BY ALKALINE DIGESTION AND DETERMINED BY UV-VIS SPECTROPHOTOMETER	1 mg/kg
POLYBROMINATED BIPHENYLS (PBBs) & POLYBROMINATED DIPHENYL ETHERS (PBDEs)	WITH REFERENCE TO IEC 62321 EDITION 1.0:2008, BY SOLVENT EXTRACTION AND DETERMINED BY GC/MS AND FURTHER HPLC CONFIRMATION WHEN NECESSARY	5 mg/kg

DATE SAMPLE RECEIVED : JUN 12, 2010

TESTING PERIOD : JUN 12, 2010 TO JUN 17, 2010

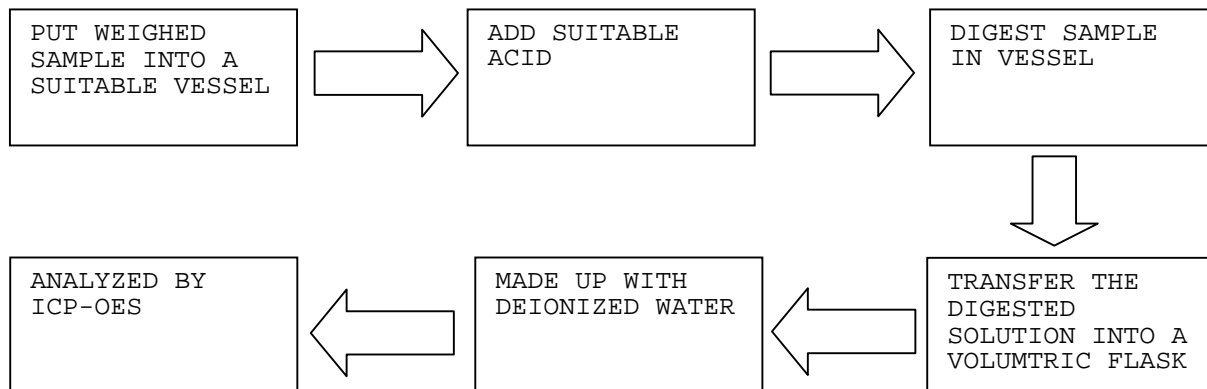
TEST REPORT

NUMBER: SZHH0049776109

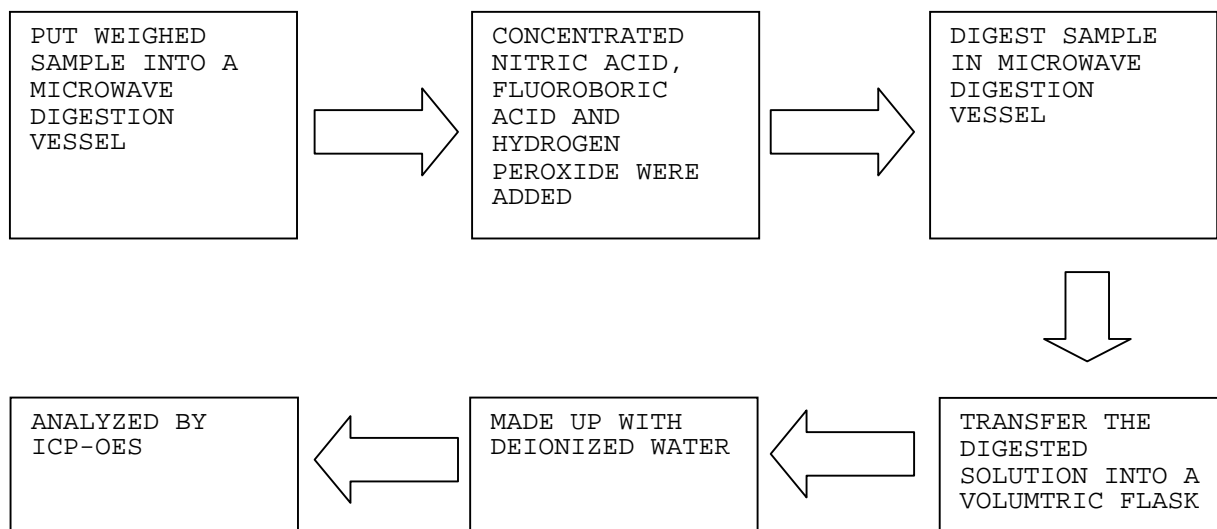
TESTS CONDUCTED

(D) MEASUREMENT FLOWCHART:

1. TEST FOR Cd/Pb CONTENTS



2. TEST FOR Hg CONTENT

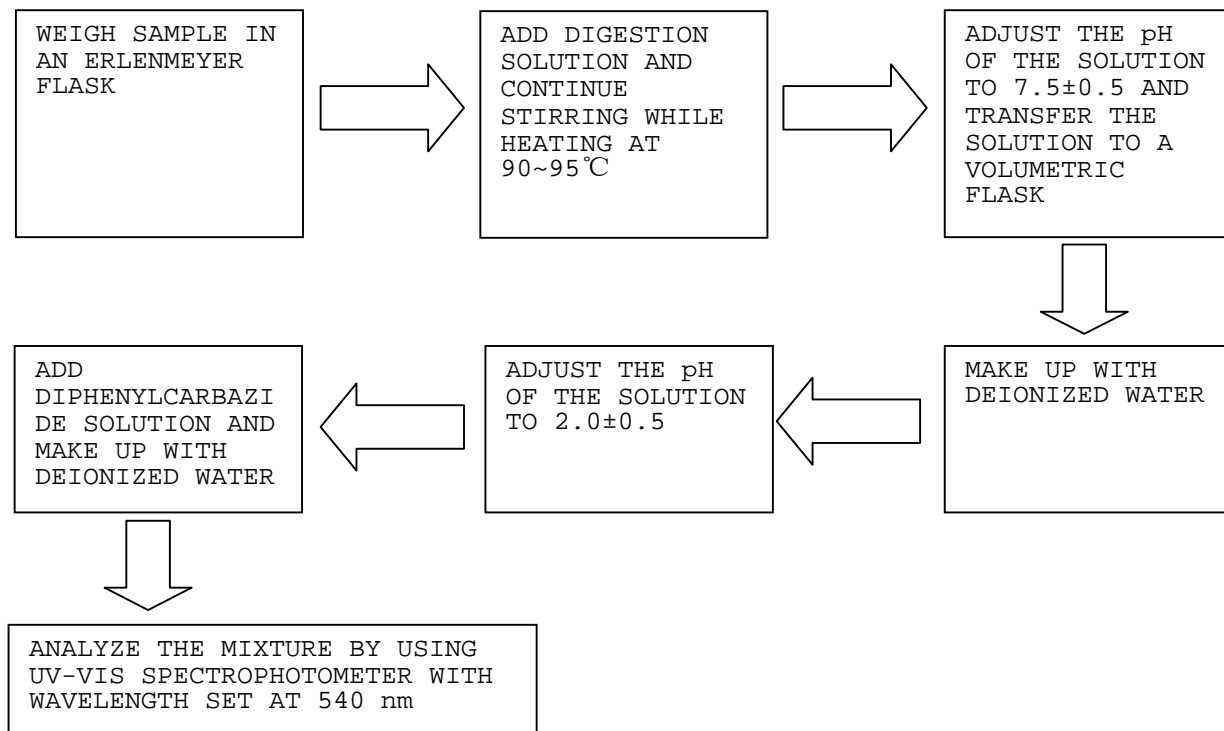


TEST REPORT

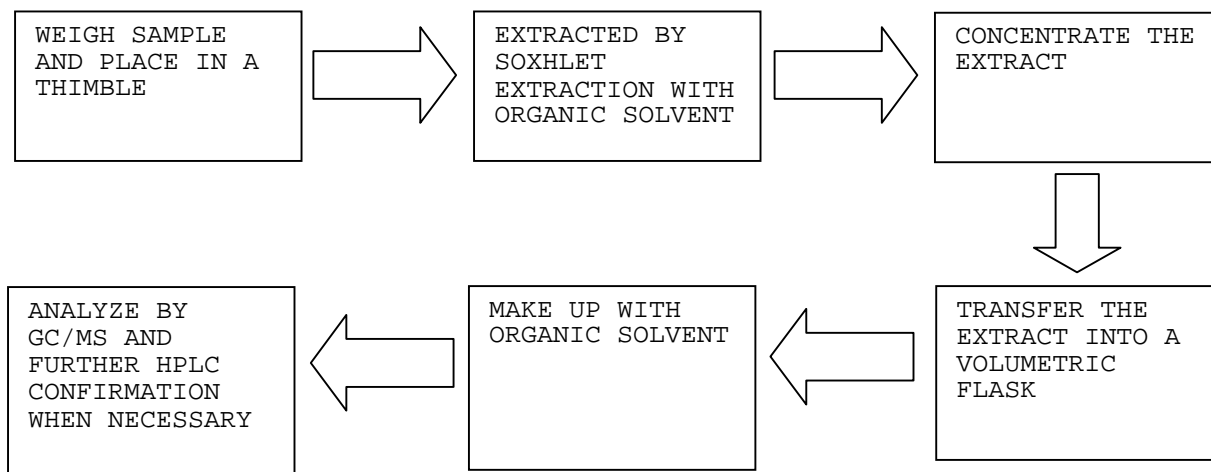
NUMBER: SZHH0049776109

TESTS CONDUCTED

3. TEST FOR CHROMIUM (VI) (Cr^{6+}) CONTENT (ALKALINE DIGESTION)



4. TEST FOR PBBs/PBDEs CONTENTS



END OF REPORT



Test Report

No. CANEC1005373801

Date: 27 Dec 2010

Page 1 of 5

DONGGUAN DAEJOO ELECTRONIC MATERIALS CO.,LTD.
XIANYONG INDUSTRIAL ZONE, WANJIANG DISTRICT, DONGGUAN CITY, GUANGDONG PROVINCE
CHINA

The following sample(s) was/were submitted and identified on behalf of the clients as :
9544B

SGS Job No. : 12900235 - GZ
Date of Sample Received : 23 Dec 2010
Testing Period : 23 Dec 2010 - 27 Dec 2010
Test Requested : Selected test(s) as requested by client.
Test Method : Please refer to next page(s).
Test Results : Please refer to next page(s).

Signed for and on behalf of
SGS-CSTC Ltd.

Silva Zhou
Approved Signatory

This document is issued by the Company subject to its General Conditions of Service printed overleaf, available on request or accessible at http://www.sgs.com/terms_and_conditions.htm and for electronic format documents, subject to Terms and Conditions for Electronic Documents at www.sgs.com/terms_e-document.htm. Attention is drawn to the limitation of liability, jurisdiction and arbitration issues defined therein. Any holder of this document is advised that information contained hereon reflects the Company's findings at the time of its inspection only and within the limits of Client's instructions, if any. The Company's sole responsibility is to its Client and this document does not exonerate parties to a transaction from exercising all their rights and obligations under the transaction documents. This document cannot be reproduced except in full, without prior written approval of the Company. Any unauthorized alteration, forgery or falsification of the content or appearance of this document is unlawful and offenders may be prosecuted to the fullest extent of the law. Unless otherwise stated, all results shown in this test report refer only to the sample(s) tested.



Test Report

No. CANEC1005373801

Date: 27 Dec 2010

Page 2 of 5

Test Results:

ID for specimen 1 : CAN10-053738.001

Description for specimen 1 : Red solid material

Elementary Analysis

Test Item(s)	Unit	Test Method (Reference)	Result	MDL
Cadmium (Cd)	mg/kg	IEC 62321:2008, ICP-OES	N.D.	2
Lead (Pb)	mg/kg	IEC 62321:2008, ICP-OES	N.D.	2
Mercury (Hg)	mg/kg	IEC 62321:2008, ICP-OES	N.D.	2
Hexavalent Chromium (CrVI) by alkaline extraction	mg/kg	IEC 62321:2008, UV-Vis	N.D.	2

Note:

1. mg/kg = ppm
2. N.D. = Not Detected (< MDL)
3. MDL = Method Detection Limit

Flame Retardants

Test Item(s)	Unit	Test Method (Reference)	Result	MDL
Sum of PBBs	mg/kg	-	N.D.	-
Monobromobiphenyl	mg/kg	IEC 62321:2008, GC-MS	N.D.	5
Dibromobiphenyl	mg/kg	IEC 62321:2008, GC-MS	N.D.	5
Tribromobiphenyl	mg/kg	IEC 62321:2008, GC-MS	N.D.	5
Tetrabromobiphenyl	mg/kg	IEC 62321:2008, GC-MS	N.D.	5
Pentabromobiphenyl	mg/kg	IEC 62321:2008, GC-MS	N.D.	5
Hexabromobiphenyl	mg/kg	IEC 62321:2008, GC-MS	N.D.	5
Heptabromobiphenyl	mg/kg	IEC 62321:2008, GC-MS	N.D.	5
Octabromobiphenyl	mg/kg	IEC 62321:2008, GC-MS	N.D.	5
Nonabromobiphenyl	mg/kg	IEC 62321:2008, GC-MS	N.D.	5
Decabromobiphenyl	mg/kg	IEC 62321:2008, GC-MS	N.D.	5
Sum of PBDEs	mg/kg	-	N.D.	-
Monobromodiphenyl ether	mg/kg	IEC 62321:2008, GC-MS	N.D.	5
Dibromodiphenyl ether	mg/kg	IEC 62321:2008, GC-MS	N.D.	5
Tribromodiphenyl ether	mg/kg	IEC 62321:2008, GC-MS	N.D.	5
Tetrabromodiphenyl ether	mg/kg	IEC 62321:2008, GC-MS	N.D.	5
Pentabromodiphenyl ether	mg/kg	IEC 62321:2008, GC-MS	N.D.	5
Hexabromodiphenyl ether	mg/kg	IEC 62321:2008, GC-MS	N.D.	5
Heptabromodiphenyl ether	mg/kg	IEC 62321:2008, GC-MS	N.D.	5
Octabromodiphenyl ether	mg/kg	IEC 62321:2008, GC-MS	N.D.	5
Nonabromodiphenyl ether	mg/kg	IEC 62321:2008, GC-MS	N.D.	5
Decabromodiphenyl ether	mg/kg	IEC 62321:2008, GC-MS	N.D.	5

This document is issued by the Company subject to its General Conditions of Service printed overleaf, available on request or accessible at http://www.sgs.com/terms_and_conditions.htm and for electronic format documents, subject to Terms and Conditions for Electronic Documents at www.sgs.com/terms_e-document.htm. Attention is drawn to the limitation of liability, jurisdiction and jurisdiction issues defined therein. Any holder of this document is advised that information contained hereon reflects the Company's findings at the time of its inspection only, and within the limits of Client's instructions, if any. The Company's sole responsibility is to its Client and this document does not exonerate parties to a transaction from exercising all their rights and obligations under the transaction documents. This document cannot be reproduced except in full, without prior written approval of the Company. Any unauthorized alteration, forgery or falsification of the content or appearance of this document is unlawful and offenders may be prosecuted to the fullest extent of the law. Unless otherwise stated, the results shown in this test report refer only to the sample(s) tested.





Test Report

No. CANEC1005373801

Date: 27 Dec 2010

Page 3 of 5

Note:

1. mg/kg = ppm
2. N.D. = Not Detected (< MDL)
3. MDL = Method Detection Limit
4. "-" = Not regulated

This document is issued by the Company subject to its General Conditions of Service printed overleaf, available on request or accessible at http://www.sgs.com/terms_and_conditions.htm and, for electronic format documents, subject to Terms and Conditions for Electronic Documents at www.sgs.com/terms_e-document.htm. Attention is drawn to the limitation of liability, indemnification and jurisdiction issues defined therein. Any holder of this document is advised that information contained hereon reflects the Company's findings at the time of its information only, and within the limits of Client's instructions, if any. The Company's sole responsibility is to its Client and this document does not exonerate parties to a transaction from exercising all their rights and obligations under the transaction documents. This document cannot be reproduced except in full, without prior written approval of the Company. Any unauthorized alteration, forgery or falsification of the content or appearance of this document is unlawful and offenders may be prosecuted to the fullest extent of the law. Unless otherwise stated, the results shown in this test report refer only to the sample(s) tested.



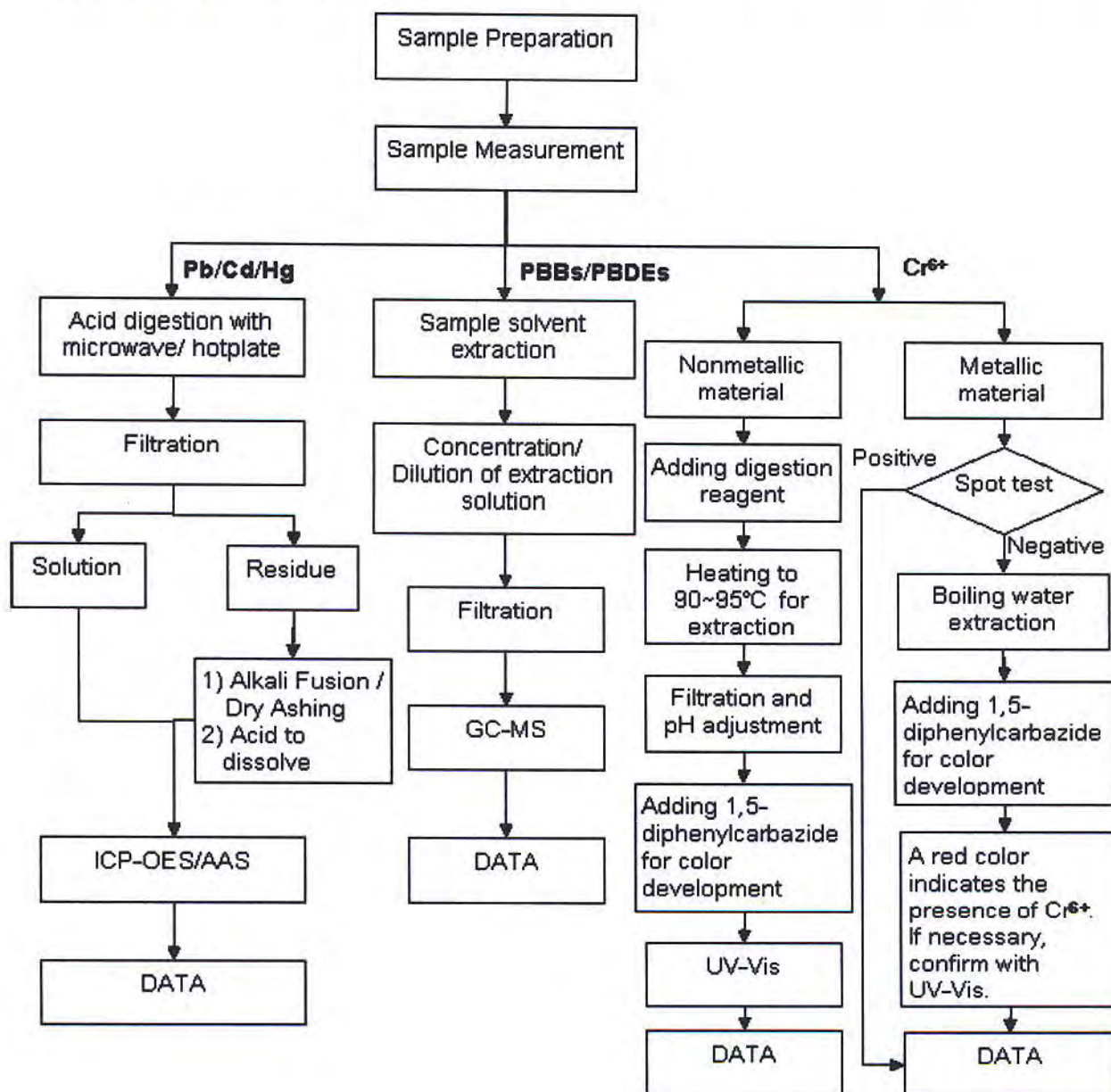
198 Kezhu Road, Sciencetech Park Guangzhou Economic & Technology Development District, Guangzhou, China 510663 t (86-20) 82155555 f (86-20) 82075113 www.cn.sgs.com
中国·广州·经济技术开发区科学城科珠路198号 邮编: 510663 t (86-20) 82155555 f (86-20) 82075113 e sgs.china@sgs.com

Member of the SGS Group (SGS SA)

ATTACHMENTS

RoHS Testing Flow Chart

- 1) Name of the person who made testing: Bella Wang / Cutey Yu / Ross Zhan
- 2) Name of the person in charge of testing: Adams Yu / Ryan Yang
- 3) These samples were dissolved totally by pre-conditioning method according to below flow chart (Cr⁶⁺ and PBBs/PBDEs test method excluded).



This document is issued by the Company subject to its General Conditions of Service printed overleaf, available on request or accessible at http://www.sgs.com/terms_and_conditions.htm and, for electronic format documents, subject to Terms and Conditions for Electronic Documents at www.sgs.com/terms_e-document.htm. Attention is drawn to the limitation of liability, indemnification and jurisdiction issues defined therein. Any holder of this document is advised that information contained hereon reflects the Company's findings at the time of its inspection only and within the limits of Client's instructions, if any. The Company's sole responsibility is to its Client and this document does not exonerate parties to a transaction from exercising all their rights and obligations under the transaction documents. This document cannot be reproduced except in full, without prior written approval of the Company. Any unauthorized alteration, forgery or falsification of the content or appearance of this document is unlawful and offenders may be prosecuted to the fullest extent of the law. Unless otherwise stated, the results shown in this test report refer only to the sample(s) tested.



Test Report

No. CANEC1005373801

Date: 27 Dec 2010

Page 5 of 5

Sample photo:



SGS authenticate the photo on original report only

*** End of Report ***

This document is issued by the Company subject to its General Conditions of Service printed overleaf, available on request or accessible at http://www.sgs.com/terms_and_conditions.htm and, for electronic format documents, subject to Terms and Conditions for Electronic Documents at www.sgs.com/terms_e-document.htm. Attention is drawn to the limitation of liability, indemnification and jurisdiction issues defined therein. Any holder of this document is advised that information contained hereon reflects the Company's findings at the time of its inspection only and within the limits of Client's instructions, if any. The Company's sole responsibility is to its Client and this document does not exonerate parties to a transaction from exercising all their rights and obligations under the transaction documents. This document cannot be reproduced except in full, without prior written approval of the Company. Any unauthorized alteration, forgery or falsification of the content or appearance of this document is unlawful and offenders may be prosecuted to the fullest extent of the law. Unless otherwise stated, the results shown in this test report refer only to the sample(s) tested.

