



ICP Test Report Certification Packet

Company name: Littelfuse, Inc.

Product Series: 2AG/ 5x20 Clips

Product #: 111 series

Issue Date: June 11, 2012

It is hereby certified by Littelfuse, Inc. that there is neither RoHS (2011/65/EU – recast of EU Directive 2002/95/EC)-restricted substance nor such use, for materials to be used for unit parts, for packing/package materials, and for additives and the like in the manufacturing processes. In addition, it is hereby reported to you that the parts and sub-materials, the materials to be used for unit parts, the packing/package materials, and the additives and the like in the manufacturing processes, are all composed of the following components.

Issued by:


KRISTEEN BACILA

<Global EHS Engineer >

(1) Parts, sub-materials and unit parts

This document covers the 111 Series 2AG / 5x20 Clips RoHS-Compliant series products manufactured by Littelfuse, Inc.

< Raw Materials Used

Please see Table 1

(2) The ICP data on all measurable substances

Please see appropriate pages as identified in Table 1

Remarks :

Table 1: List of Raw Materials covered by this report

Total Parts	Raw Material Part Number	Raw Material Description	Page(s)
1	111 Series Clip	01110501Z	3-7
2	111 Series Clip	01110505Z	8-12
3	111 Series Clip	01110506Z	13-17
4	111 Series Clip	01110510Z	18-22
5	111 Series Clip	01110512Z	23-27



Test Report

Number : TWNC00259911

Applicant: Littelfuse, S.A. de C.V.
Blvd. Fausto Z. Martinez #1800
Col. Magisterio Seccion 38 C.P.
26070 Piedra Negras, Coahuila,
Mexico

Date : Jun 04, 2012

Sample Description:

One (1) group of submitted samples said to be :

Part Description : CLIP
Part Number : 01110501Z
Date Sample Received : May 29, 2012
Date Test Started : May 31, 2012

Test Conducted :

As requested by the applicant, for details please refer to attached pages.

Authorized By:

On Behalf Of Intertek Testing Services
Taiwan Limited



K. Y. Liang
Director

This report shall not be reproduced
except in full, without the written
approval of the laboratory.

Number : TWNC00259911

Test Conducted

(I) Test Result Summary :

<u>Test Item</u>	<u>Result (ppm)</u>	
	<u>(1)</u>	<u>(2)</u>
Heavy Metal		
Cadmium (Cd) content	ND	ND
Lead (Pb) content	83	339
Mercury (Hg) content	ND	ND
Chromium VI (Cr ⁶⁺) content (mg/kg with 50cm ²)	Negative (< 0.02)	Negative (< 0.02)

Remarks: ppm = Parts per million based on weight of tested sample = mg/kg
 ND = Not detected
 < = Less than
 mg/kg with 50cm² = milligram per kilogram with 50 square centimetre
 Negative = A negative test result indicated positive observation was not found at the time of Test.

Tested Components

- (1) Coppery Metal Base Material
- (2) Silvery Plating Layer

Responsibility of Chemist : Irene Chiou / Kevin Liu / Cathy Chen

Date Sample Received : May 29, 2012

Test Period : May 31, 2012 To Jun 04, 2012

(II) RoHS Requirement:

<u>Restricted Substances</u>	<u>Limits</u>
Cadmium (Cd) Content	0.01% (100ppm)
Lead (Pb) Content	0.1% (1000ppm)
Mercury (Hg) Content	0.1% (1000ppm)
Chromium VI (Cr ⁶⁺) Content	0.1% (1000ppm)

The above limits were quoted from 2002/95/EC and amendment 2005/618/EC for homogeneous material.

Number : TWNC00259911

Test Conducted

(III) Test Method:

Test Item	Test Method	Reporting Limit
Cadmium (Cd) content	With reference to IEC 62321 edition 1.0:2008 in clause 8/9/10, by microwave digestion until the tested samples are totally dissolved and determined by ICP-OES.	2 ppm
Lead (Pb) content	With reference to IEC 62321 edition 1.0:2008 in clause 8/9/10, by microwave digestion until the tested samples are totally dissolved and determined by ICP-OES.	2 ppm
Mercury (Hg) content	With reference to IEC 62321 edition 1.0:2008 in clause 7, by microwave digestion until the tested samples are totally dissolved and determined by ICP-OES.	2 ppm
Chromium VI (Cr^{6+}) content	With reference to IEC 62321 edition 1.0:2008 in annex B, by boiling water extraction and determined by UV-Vis Spectrophotometer.	0.02 mg/kg with 50cm ²

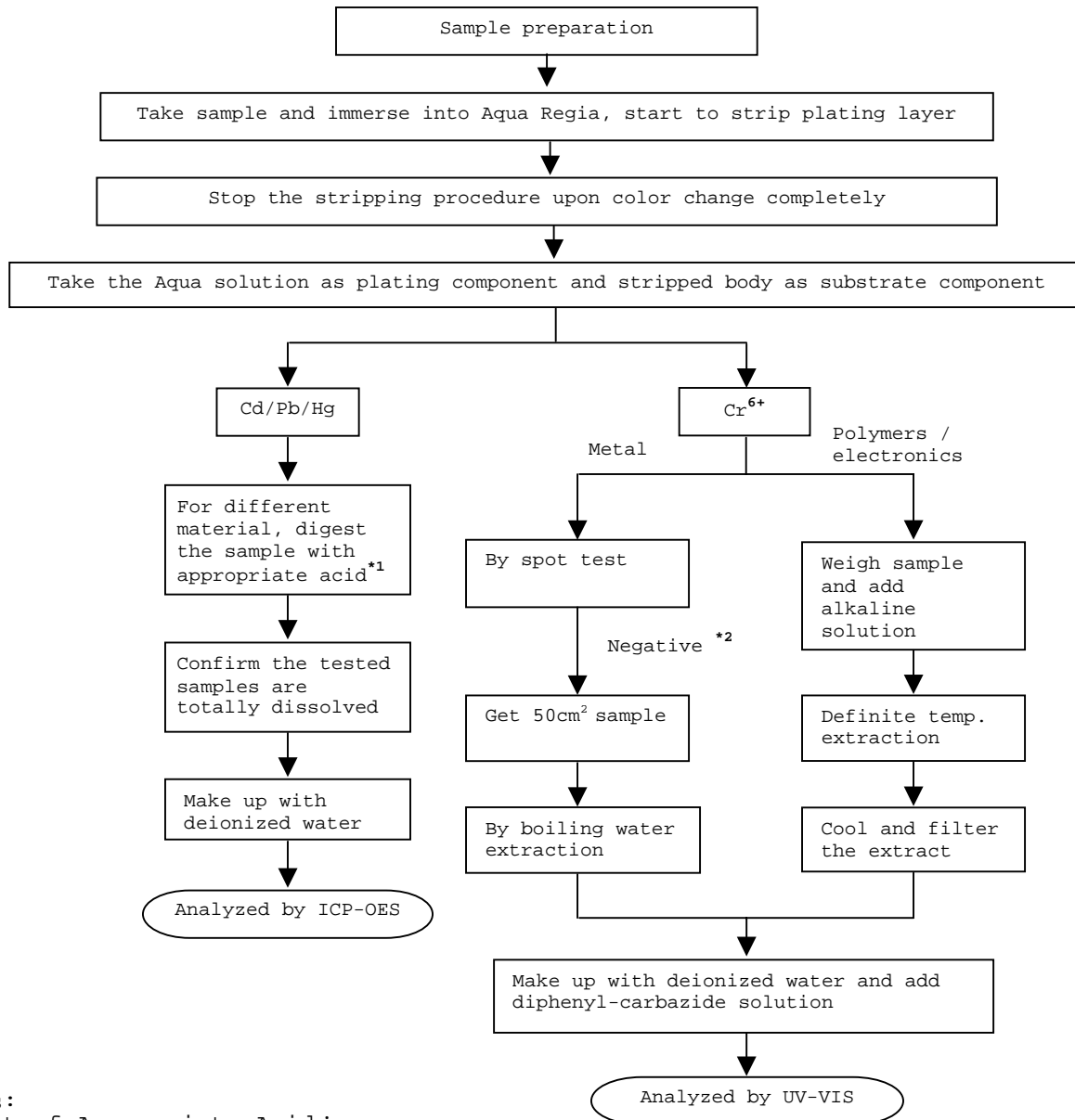
Remark: Reporting limit = Quantitation limit of analyte in sample

Test Conducted

(IV) Measurement Flowchart:

Test for Cd/Pb/Hg/Chromium (VI)

Reference Standard : IEC 62321 edition 1.0:2008



Remarks:

*1: List of Appropriate Acid:

Material	Acid Added for Digestion
Polymers	HNO ₃ , HCl, HF, H ₂ O ₂ , H ₃ BO ₃
Metals	HNO ₃ , HCl, HF
Electronics	HNO ₃ , HCl, H ₂ O ₂ , HBF ₄

*2: If the result of spot test is positive, Chromium VI would be determined as detected.

End of Report

Test Conducted

Number : TWNC00259911

Photo





Test Report

Number : TWNC00259912

Applicant: Littelfuse, S.A. de C.V.
Blvd. Fausto Z. Martinez #1800
Col. Magisterio Seccion 38 C.P.
26070 Piedra Negras, Coahuila,
Mexico

Date : Jun 04, 2012

Sample Description:

One (1) group of submitted samples said to be :

Part Description : CLIP
Part Number : 01110505Z
Date Sample Received : May 29, 2012
Date Test Started : May 31, 2012

Test Conducted :

As requested by the applicant, for details please refer to attached pages.

Authorized By:

On Behalf Of Intertek Testing Services
Taiwan Limited



K. Y. Liang
Director

This report shall not be reproduced
except in full, without the written
approval of the laboratory.

Number : TWNC00259912

Test Conducted

(I) Test Result Summary :

<u>Test Item</u>	<u>Result (ppm)</u>	
	<u>(1)</u>	<u>(2)</u>
Heavy Metal		
Cadmium (Cd) content	ND	ND
Lead (Pb) content	ND	399
Mercury (Hg) content	ND	ND
Chromium VI (Cr ⁶⁺) content (mg/kg with 50cm ²)	Negative (< 0.02)	Negative (< 0.02)

Remarks: ppm = Parts per million based on weight of tested sample = mg/kg
 ND = Not detected
 < = Less than
 mg/kg with 50cm² = milligram per kilogram with 50 square centimetre
 Negative = A negative test result indicated positive observation
 was not found at the time of Test.

Tested Components

- (1) Coppery Metal Base Material
- (2) Silvery Plating Layer

Responsibility of Chemist : Irene Chiou / Kevin Liu / Cathy Chen

Date Sample Received : May 29, 2012

Test Period : May 31, 2012 To Jun 04, 2012

(II) RoHS Requirement:

<u>Restricted Substances</u>	<u>Limits</u>
Cadmium (Cd) Content	0.01% (100ppm)
Lead (Pb) Content	0.1% (1000ppm)
Mercury (Hg) Content	0.1% (1000ppm)
Chromium VI (Cr ⁶⁺) Content	0.1% (1000ppm)

The above limits were quoted from 2002/95/EC and amendment 2005/618/EC for homogeneous material.

Number : TWNC00259912

Test Conducted

(III) Test Method:

Test Item	Test Method	Reporting Limit
Cadmium (Cd) content	With reference to IEC 62321 edition 1.0:2008 in clause 8/9/10, by microwave digestion until the tested samples are totally dissolved and determined by ICP-OES.	2 ppm
Lead (Pb) content	With reference to IEC 62321 edition 1.0:2008 in clause 8/9/10, by microwave digestion until the tested samples are totally dissolved and determined by ICP-OES.	2 ppm
Mercury (Hg) content	With reference to IEC 62321 edition 1.0:2008 in clause 7, by microwave digestion until the tested samples are totally dissolved and determined by ICP-OES.	2 ppm
Chromium VI (Cr^{6+}) content	With reference to IEC 62321 edition 1.0:2008 in annex B, by boiling water extraction and determined by UV-Vis Spectrophotometer.	0.02 mg/kg with 50cm ²

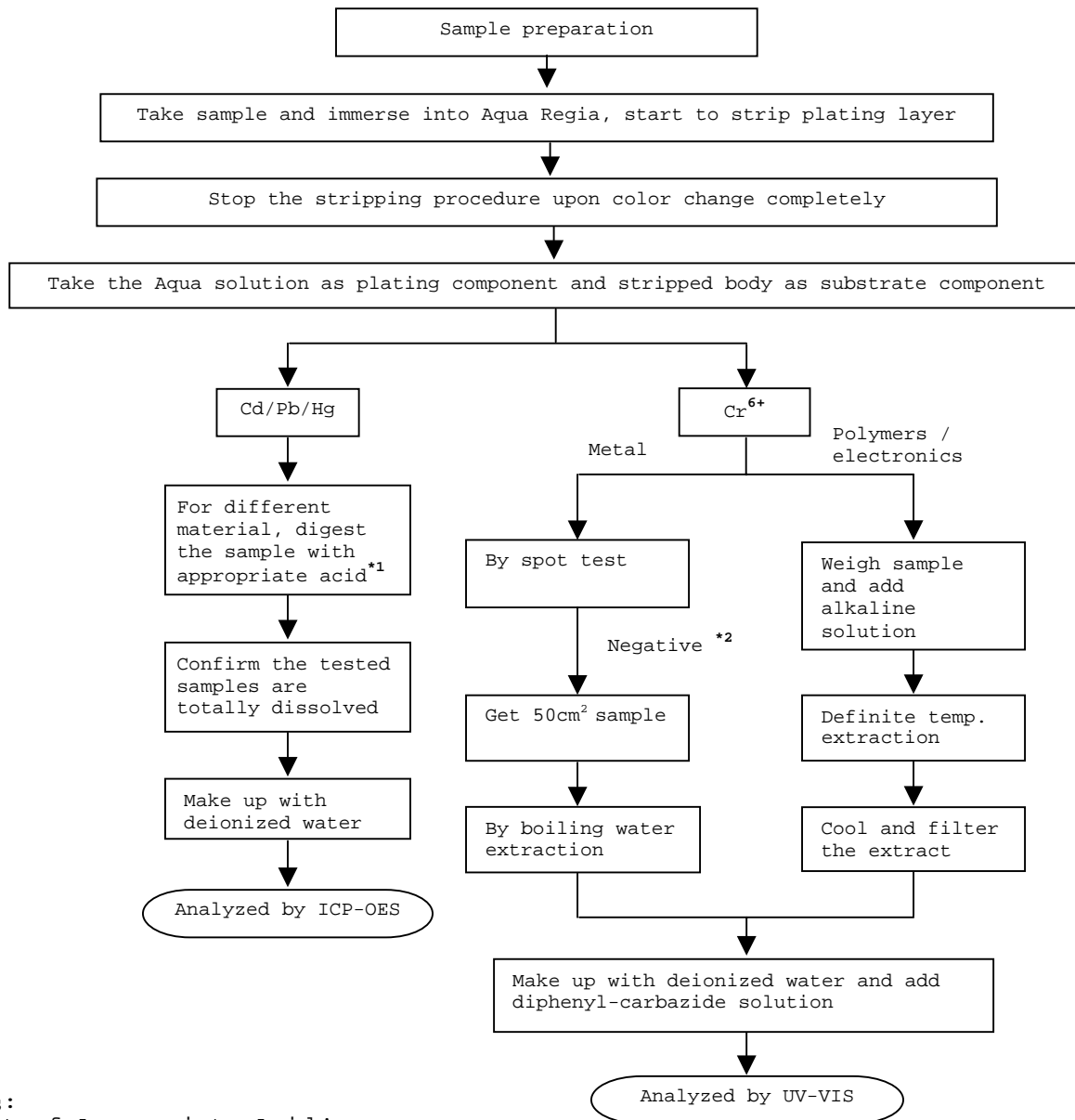
Remark: Reporting limit = Quantitation limit of analyte in sample

Test Conducted

(IV) Measurement Flowchart:

Test for Cd/Pb/Hg/Chromium (VI)

Reference Standard : IEC 62321 edition 1.0:2008



Remarks:

*1: List of Appropriate Acid:

Material	Acid Added for Digestion
Polymers	HNO ₃ , HCl, HF, H ₂ O ₂ , H ₃ BO ₃
Metals	HNO ₃ , HCl, HF
Electronics	HNO ₃ , HCl, H ₂ O ₂ , HBF ₄

*2: If the result of spot test is positive, Chromium VI would be determined as detected.

End of Report

Test Conducted

Number : TWNC00259912

Photo





Test Report

Number : TWNC00259913

Applicant: Littelfuse, S.A. de C.V.
Blvd. Fausto Z. Martinez #1800
Col. Magisterio Seccion 38 C.P.
26070 Piedra Negras, Coahuila,
Mexico

Date : Jun 04, 2012

Sample Description:

One (1) group of submitted samples said to be :

Part Description : CLIP
Part Number : 01110506Z
Date Sample Received : May 29, 2012
Date Test Started : May 31, 2012

Test Conducted :

As requested by the applicant, for details please refer to attached pages.

Authorized By:

On Behalf Of Intertek Testing Services
Taiwan Limited



K. Y. Liang
Director

This report shall not be reproduced
except in full, without the written
approval of the laboratory.

Number : TWNC00259913

Test Conducted

(I) Test Result Summary :

<u>Test Item</u>	<u>Result (ppm)</u>	
	<u>(1)</u>	<u>(2)</u>
Heavy Metal		
Cadmium (Cd) content	ND	ND
Lead (Pb) content	ND	237
Mercury (Hg) content	ND	ND
Chromium VI (Cr ⁶⁺) content (mg/kg with 50cm ²)	Negative (< 0.02)	Negative (< 0.02)

Remarks: ppm = Parts per million based on weight of tested sample = mg/kg
 ND = Not detected
 < = Less than
 mg/kg with 50cm² = milligram per kilogram with 50 square centimetre
 Negative = A negative test result indicated positive observation
 was not found at the time of Test.

Tested Components

- (1) Coppery Metal Base Material
- (2) Silvery Plating Layer

Responsibility of Chemist : Irene Chiou / Kevin Liu / Cathy Chen

Date Sample Received : May 29, 2012

Test Period : May 31, 2012 To Jun 04, 2012

(II) RoHS Requirement:

<u>Restricted Substances</u>	<u>Limits</u>
Cadmium (Cd) Content	0.01% (100ppm)
Lead (Pb) Content	0.1% (1000ppm)
Mercury (Hg) Content	0.1% (1000ppm)
Chromium VI (Cr ⁶⁺) Content	0.1% (1000ppm)

The above limits were quoted from 2002/95/EC and amendment 2005/618/EC for homogeneous material.

Number : TWNC00259913

Test Conducted

(III) Test Method:

Test Item	Test Method	Reporting Limit
Cadmium (Cd) content	With reference to IEC 62321 edition 1.0:2008 in clause 8/9/10, by microwave digestion until the tested samples are totally dissolved and determined by ICP-OES.	2 ppm
Lead (Pb) content	With reference to IEC 62321 edition 1.0:2008 in clause 8/9/10, by microwave digestion until the tested samples are totally dissolved and determined by ICP-OES.	2 ppm
Mercury (Hg) content	With reference to IEC 62321 edition 1.0:2008 in clause 7, by microwave digestion until the tested samples are totally dissolved and determined by ICP-OES.	2 ppm
Chromium VI (Cr^{6+}) content	With reference to IEC 62321 edition 1.0:2008 in annex B, by boiling water extraction and determined by UV-Vis Spectrophotometer.	0.02 mg/kg with 50cm ²

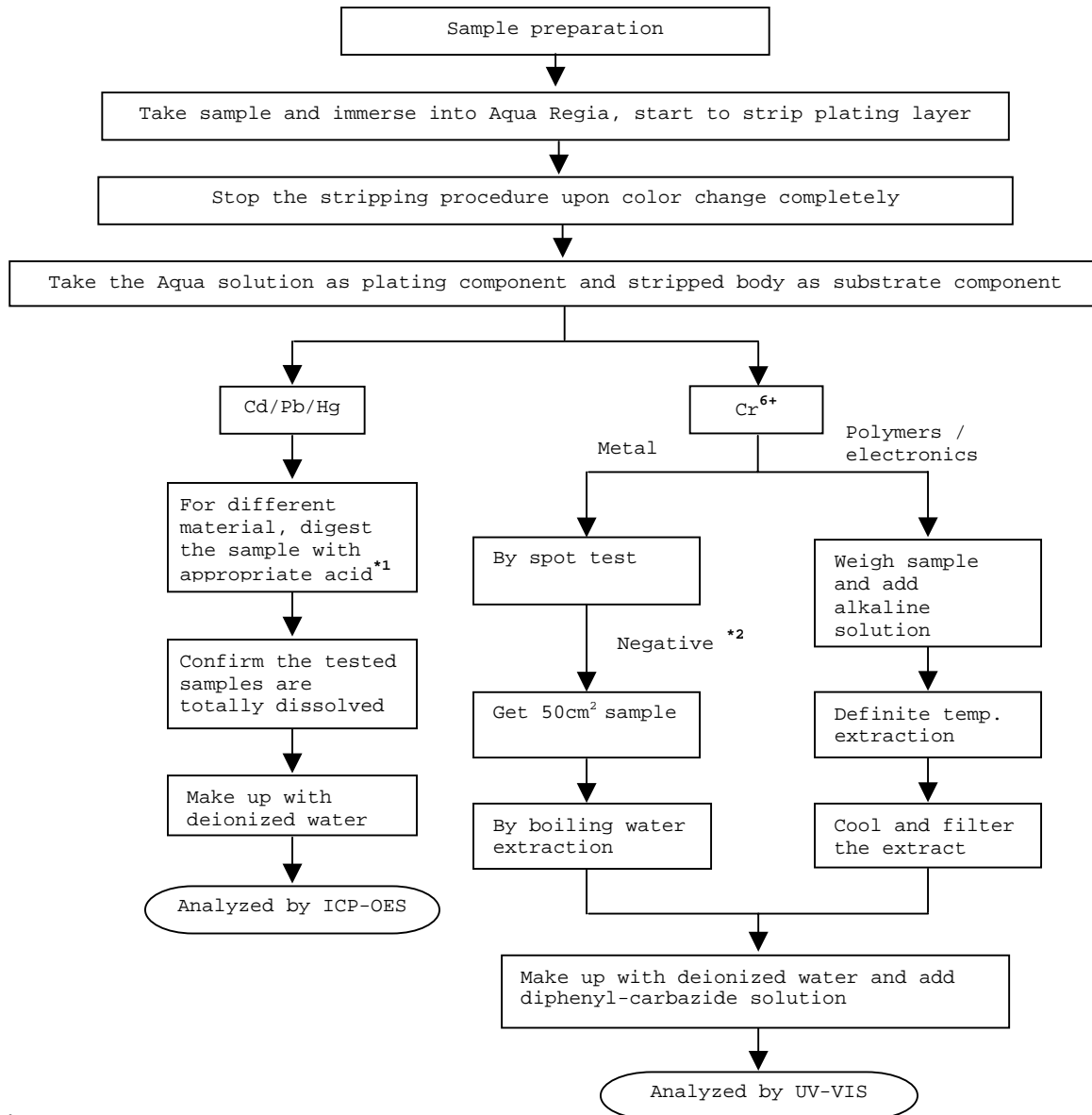
Remark: Reporting limit = Quantitation limit of analyte in sample

Test Conducted

(IV) Measurement Flowchart:

Test for Cd/Pb/Hg/Chromium (VI)

Reference Standard : IEC 62321 edition 1.0:2008



Remarks:

*1: List of Appropriate Acid:

Material	Acid Added for Digestion
Polymers	HNO ₃ , HCl, HF, H ₂ O ₂ , H ₃ BO ₃
Metals	HNO ₃ , HCl, HF
Electronics	HNO ₃ , HCl, H ₂ O ₂ , HBF ₄

*2: If the result of spot test is positive, Chromium VI would be determined as detected.

End of Report

Test Conducted

Number : TWNC00259913

Photo





Test Report

Number : TWNC00259914

Applicant: Littelfuse, S.A. de C.V.
Blvd. Fausto Z. Martinez #1800
Col. Magisterio Seccion 38 C.P.
26070 Piedra Negras, Coahuila,
Mexico

Date : Jun 04, 2012

Sample Description:

One (1) group of submitted samples said to be :

Part Description : CLIP
Part Number : 01110510Z
Date Sample Received : May 29, 2012
Date Test Started : May 30, 2012

Test Conducted :

As requested by the applicant, for details please refer to attached pages.

Authorized By:

On Behalf Of Intertek Testing Services
Taiwan Limited



K. Y. Liang
Director

This report shall not be reproduced
except in full, without the written
approval of the laboratory.

Number : TWNC00259914

Test Conducted

(I) Test Result Summary :

<u>Test Item</u>	<u>Result (ppm)</u>	
	<u>(1)</u>	<u>(2)</u>
Heavy Metal		
Cadmium (Cd) content	ND	ND
Lead (Pb) content	70	246
Mercury (Hg) content	ND	ND
Chromium VI (Cr ⁶⁺) content (mg/kg with 50cm ²)	Negative (< 0.02)	Negative (< 0.02)

Remarks: ppm = Parts per million based on weight of tested sample = mg/kg
 ND = Not detected
 < = Less than
 mg/kg with 50cm² = milligram per kilogram with 50 square centimetre
 Negative = A negative test result indicated positive observation
 was not found at the time of Test.

Tested Components

- (1) Coppery Metal Base Material
- (2) Silvery Plating Layer

Responsibility of Chemist : Irene Chiou / Kevin Liu / Cathy Chen

Date Sample Received : May 29, 2012

Test Period : May 30, 2012 To Jun 04, 012

(II) RoHS Requirement:

<u>Restricted Substances</u>	<u>Limits</u>
Cadmium (Cd) Content	0.01% (100ppm)
Lead (Pb) Content	0.1% (1000ppm)
Mercury (Hg) Content	0.1% (1000ppm)
Chromium VI (Cr ⁶⁺) Content	0.1% (1000ppm)

The above limits were quoted from 2002/95/EC and amendment 2005/618/EC for homogeneous material.

Number : TWNC00259914

Test Conducted

(III) Test Method:

Test Item	Test Method	Reporting Limit
Cadmium (Cd) content	With reference to IEC 62321 edition 1.0:2008 in clause 8/9/10, by microwave digestion until the tested samples are totally dissolved and determined by ICP-OES.	2 ppm
Lead (Pb) content	With reference to IEC 62321 edition 1.0:2008 in clause 8/9/10, by microwave digestion until the tested samples are totally dissolved and determined by ICP-OES.	2 ppm
Mercury (Hg) content	With reference to IEC 62321 edition 1.0:2008 in clause 7, by microwave digestion until the tested samples are totally dissolved and determined by ICP-OES.	2 ppm
Chromium VI (Cr^{6+}) content	With reference to IEC 62321 edition 1.0:2008 in annex B, by boiling water extraction and determined by UV-Vis Spectrophotometer.	0.02 mg/kg with 50cm ²

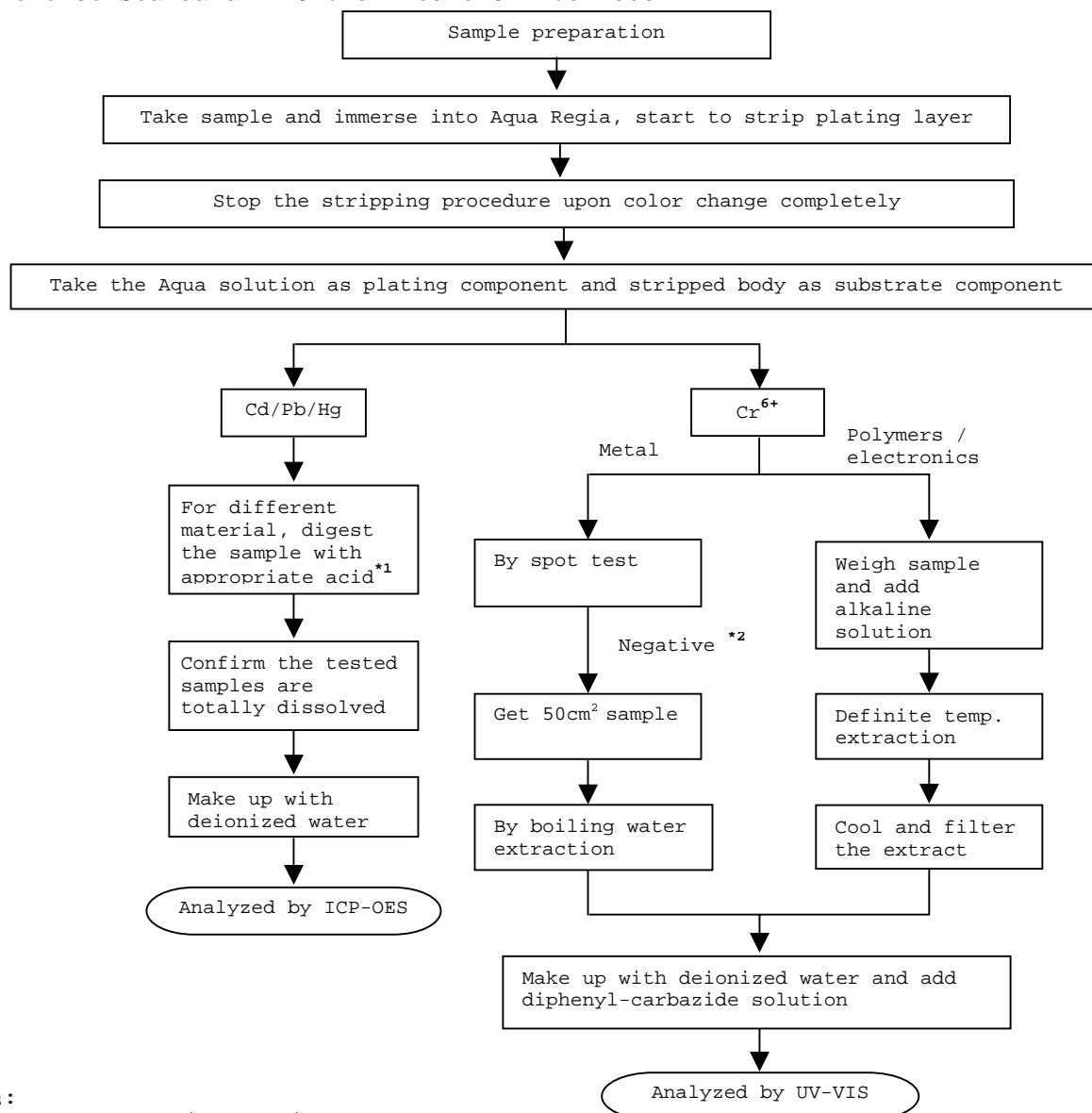
Remark: Reporting limit = Quantitation limit of analyte in sample

Test Conducted

(IV) Measurement Flowchart:

Test for Cd/Pb/Hg/Chromium (VI)

Reference Standard : IEC 62321 edition 1.0:2008



Remarks:

*1: List of Appropriate Acid:

Material	Acid Added for Digestion
Polymers	HNO ₃ , HCl, HF, H ₂ O ₂ , H ₃ BO ₃
Metals	HNO ₃ , HCl, HF
Electronics	HNO ₃ , HCl, H ₂ O ₂ , HBF ₄

*2: If the result of spot test is positive, Chromium VI would be determined as detected.

End of Report

Test Conducted

Number : TWNC00259914

Photo





Test Report

Number : TWNC00221986

Applicant: Littelfuse, S.A. de C.V.
Blvd. Fausto Z. Martinez #1800
Col. Magisterio Seccion 38 C.P.
26070 Piedra Negras, Coahuila,
Mexico

Date : Sep 02, 2011

Sample Description:

One (1) group of submitted samples said to be :

Part Description : CLIP
Part Number : 01110512Z
Date Sample Received : Aug 30, 2011
Date Test Started : Aug 30, 2011

Test Conducted :

As requested by the applicant, for details please refer to attached pages.

Authorized By:

On Behalf Of Intertek Testing Services
Taiwan Limited



K. Y. Liang
Director

This report shall not be reproduced
except in full, without the written
approval of the laboratory.



Number : TWNC00221986

Test Conducted

(I) Test Result Summary :

<u>Test Item</u>	<u>Result (ppm)</u>	
	<u>(1)</u>	<u>(2)</u>
Heavy Metal		
Cadmium (Cd) content	ND	ND
Lead (Pb) content	ND	ND
Mercury (Hg) content	ND	ND
Chromium VI (Cr ⁶⁺) content (mg/kg with 50cm ²)	Negative (< 0.02)	Negative (< 0.02)

Remarks: ppm = Parts per million based on weight of tested sample = mg/kg
ND = Not detected
< = Less than
mg/kg with 50cm² = milligram per kilogram with 50 square centimetre
Negative = A negative test result indicated positive observation
was not found at the time of Test.

Tested Components

- (1) Coppery Metal Base Material
- (2) Silvery Plating Layer

Responsibility of Chemist : Irene Chiou / Kevin Liu / Cathy Chen

Date Sample Received : Aug 30, 2011

Test Period : Aug 30, 2011 To Sep 02, 2011

(II) RoHS Requirement:

<u>Restricted Substances</u>	<u>Limits</u>
Cadmium (Cd) Content	0.01% (100ppm)
Lead (Pb) Content	0.1% (1000ppm)
Mercury (Hg) Content	0.1% (1000ppm)
Chromium VI (Cr ⁶⁺) Content	0.1% (1000ppm)

The above limits were quoted from 2002/95/EC and amendment 2005/618/EC for homogeneous material.

Number : TWNC00221986

Test Conducted

(III) Test Method:

<u>Test Item</u>	<u>Test Method</u>	<u>Reporting Limit</u>
Cadmium (Cd) content	With reference to IEC 62321 edition 1.0:2008 in clause 8/9/10, by microwave digestion until the tested samples are totally dissolved and determined by ICP-OES.	2 ppm
Lead (Pb) content	With reference to IEC 62321 edition 1.0:2008 in clause 8/9/10, by microwave digestion until the tested samples are totally dissolved and determined by ICP-OES.	2 ppm
Mercury (Hg) content	With reference to IEC 62321 edition 1.0:2008 in clause 7, by microwave digestion until the tested samples are totally dissolved and determined by ICP-OES.	2 ppm
Chromium VI (Cr^{6+}) content	With reference to IEC 62321 edition 1.0:2008 in annex B, by boiling water extraction and determined by UV-Vis spectrophotometer.	0.02 mg/kg with 50cm ²

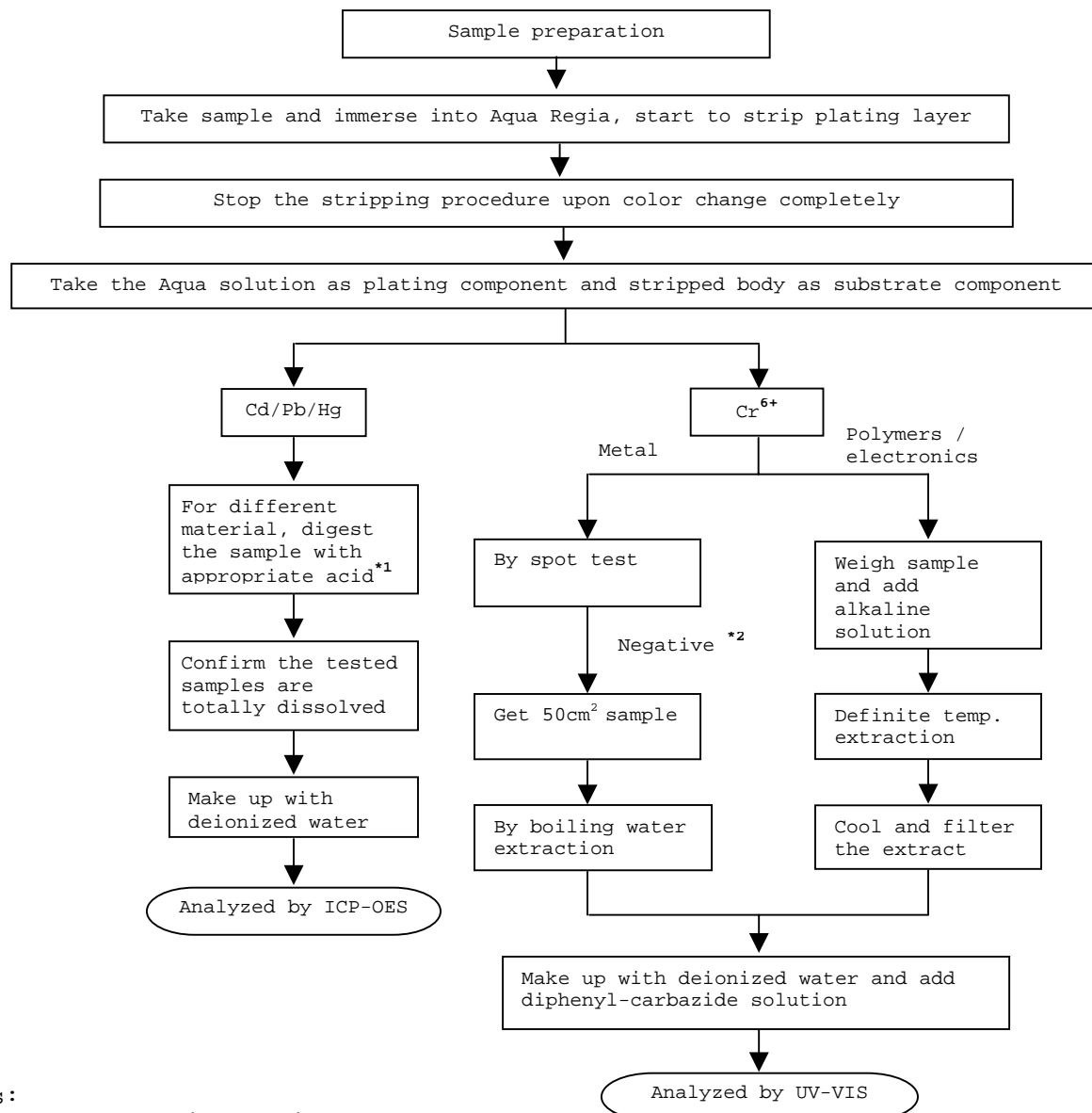
Remark: Reporting limit = Quantitation limit of analyte in sample

Test Conducted

(IV) Measurement Flowchart:

Test for Cd/Pb/Hg/Chromium (VI)

Reference Standard : IEC 62321 edition 1.0:2008



Remarks:

*1: List of Appropriate Acid:

Material	Acid Added for Digestion
Polymers	HNO ₃ , HCl, HF, H ₂ O ₂ , H ₃ BO ₃
Metals	HNO ₃ , HCl, HF
Electronics	HNO ₃ , HCl, H ₂ O ₂ , HBF ₄

*2: If the result of spot test is positive, Chromium VI would be determined as detected.

End of Report

Test Conducted

Number : TWNC00221986

Photo

