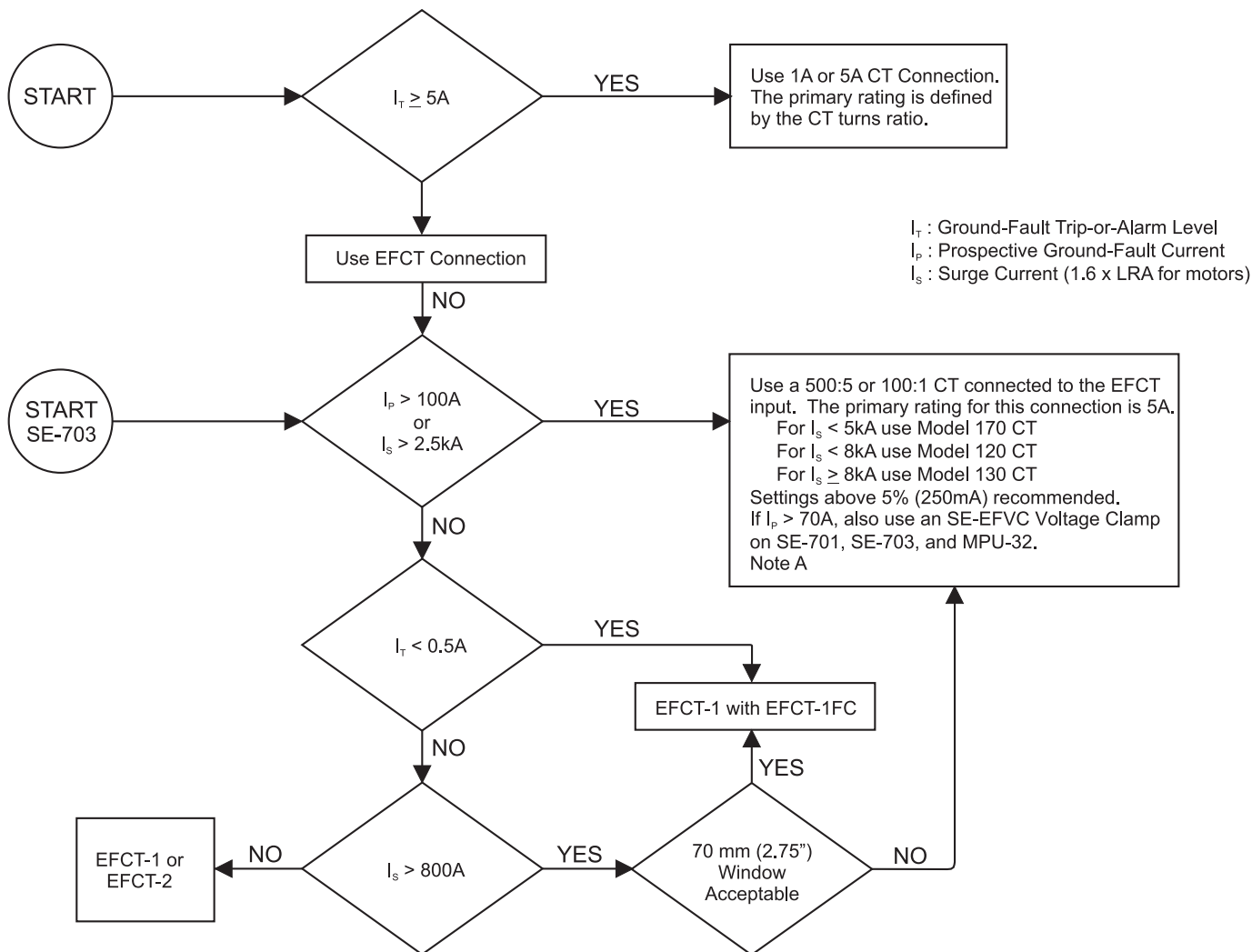




# 11.1 TECHNICAL INFORMATION

## TITLE: GROUND-FAULT-CT SELECTION FLOWCHART

Applicable Monitors: MPU-32, MPS, SE-330, SE-701, SE-703



Note A: 120-501: 500:5 Model 120 CT, 146mm (5.75") Window, 5 kg (11 lb)  
130-501: 500:5 Model 130 CT, 146 mm (5.75") Window, 8.2 kg (18 lb)  
170SHT-501: 500:5 Model 170 CT, 108 mm (4.25") Window, 1.4 kg (3 lb)  
Other 500:5 or 100:1 CT's may work but the user should test to verify performance.

Note B: EFCT-1: CT with no flux conditioner, 82 mm (3.23") Window.  
EFCT-1FC: EFCT-1 flux conditioner, 70 mm (2.75") Window.  
EFCT-2: CT complete with flux conditioner, 140 mm (5.50") Window.

See Monitoring Neutral-Grounding Resistor paper for ground-fault settings in resistance-grounded applications.

DATE	REV	AUTHOR	DOCUMENT LOCATION	PAGE
2006-Jan-31	5	MV	<a href="http://www.startco.ca/library/techinfo/section11/11.1.pdf">http://www.startco.ca/library/techinfo/section11/11.1.pdf</a>	1 of 1