



ICP Test Report Certification Packet

Company name: Littelfuse, Inc.

Product Series: Nano2 Fuse FA, with Clip

Product #: 157 Series

Issue Date: January 15, 2013

It is hereby certified by Littelfuse, Inc. that there is neither RoHS (EU Directive 2002/95/EC, 2011/65/EU)-restricted substance nor such use, for materials to be used for unit parts, for packing/packaging materials, and for additives and the like in the manufacturing processes. In addition, it is hereby reported to you that the parts and sub-materials, the materials to be used for unit parts, the packing/packaging materials, and the additives and the like in the manufacturing processes, are all composed of the following components.

Issued by: 
KRISTEEN BACILA

<Global EHS Engineer>

(1) Parts, sub-materials and unit parts

This document covers the Nano2 Fuse FA with Clip
products manufactured by Littelfuse, Inc.

RoHS-Compliant series

< Raw Materials Used

Please see Table 1

(2) The ICP data on all measurable substances

Please see appropriate pages as identified in Table 1

Remarks : .



Table 1: List of Raw Materials covered by this report

Total Parts	Raw Material Part Number	Raw Material Description	Page(s)
1	910-238	Cap	3-10
2	909-434	Body	11-34
3	082xxx	Wire-2% by weight Ag Clad Cu	35-39
4	082xxx	Wire-5% by weight Ag Clad Cu	40-44
5	497xxx	Wire-Ag Plated 36 Alloy	45-50
6	497xxx	Wire-Cu Clad Fe58 42Ni 5Ag by weight	51-56
7	692321	Solder	57-62
8	087266	HMA	63-72
9	425809	Ink	73-81
10	883-070	Clip	82-87



Test Report

No.: LB12-01094B

March 5, 2012

Page 1 of 4

LITTELFUSE PHILS., INC.

Lima Tech Center, SEZ,
Lipa, Malvar, Batangas

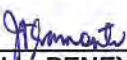
The following sample(s) was/were submitted and identified by/on behalf of the client as:

Product Name : Cap 910-238 / Base
SGS Sample Number : LB12-01094.003
Received Date : February 21, 2012
Test Performing Date : February 21, 2012 to March 5, 2012
Test Performed : SGS Philippines subcontracted the testing of sample(s) selected by applicant with following results
Test Requested : Selected test(s) as requested by client.
Test Method : Please refer to next page(s).
Test Result(s) : Please refer to next page(s).
Conclusion : Based on the performed tests on submitted sample(s), the results of Lead, Cadmium, Hexavalent chromium and Mercury **comply with** the RoHS Directive 2002/95/EC and its subsequent amendments.

=====

This report will be kept on file for six months from the date of issue.

Signed for and on behalf of
SGS PHILIPPINES, INC.


for **MEDEN L. PENEVRA**
Laboratory Operations Manager

"This document is issued by the Company subject to its General Conditions of Service printed overleaf, available on request or accessible at www.sgs.com/terms_and_conditions.htm and, for electronic format documents, subject to Terms and Conditions for Electronic Documents at www.sgs.com/terms_e-document.htm. Attention is drawn to the limitation of liability, indemnification and jurisdiction issues defined therein. Any holder of this document is advised that information contained hereon reflects the Company's findings at the time of its intervention only and within the limits of Client's instructions, if any. The Company's sole responsibility is to its Client and this document does not exonerate parties to a transaction from exercising all their rights and obligations under the transaction documents. This document cannot be reproduced except in full, without prior written approval of the Company. Any unauthorized alteration, forgery or falsification of the content or appearance of this document is unlawful and offenders may be prosecuted to the fullest extent of the law. Unless otherwise stated the results shown in this test report refer only to the sample(s) tested and such sample(s) are retained for 60 days only."

L 100102

Test Report

No.: LB12-01094B

March 5, 2012

Page 2 of 4

Sample Number : LB12-01094.003
Physical Description : Base material of silver colored metal
Item / Batch Number : N/A

RoHS Directive 2002/95/EC

Test Item(s)	Unit	Method	MDL	Result
Cadmium (Cd)	mg/kg	IEC 62321: 2008 application of modified digestion by surface etching and performed by ICP-AES.	2	ND
Lead (Pb)	mg/kg		2	8
Mercury (Hg)	mg/kg		2	ND
Hexavalent Chromium Cr(VI)	**	With reference to IEC 62321: 2008 and performed by Boiling water extraction Method.#	#	Negative

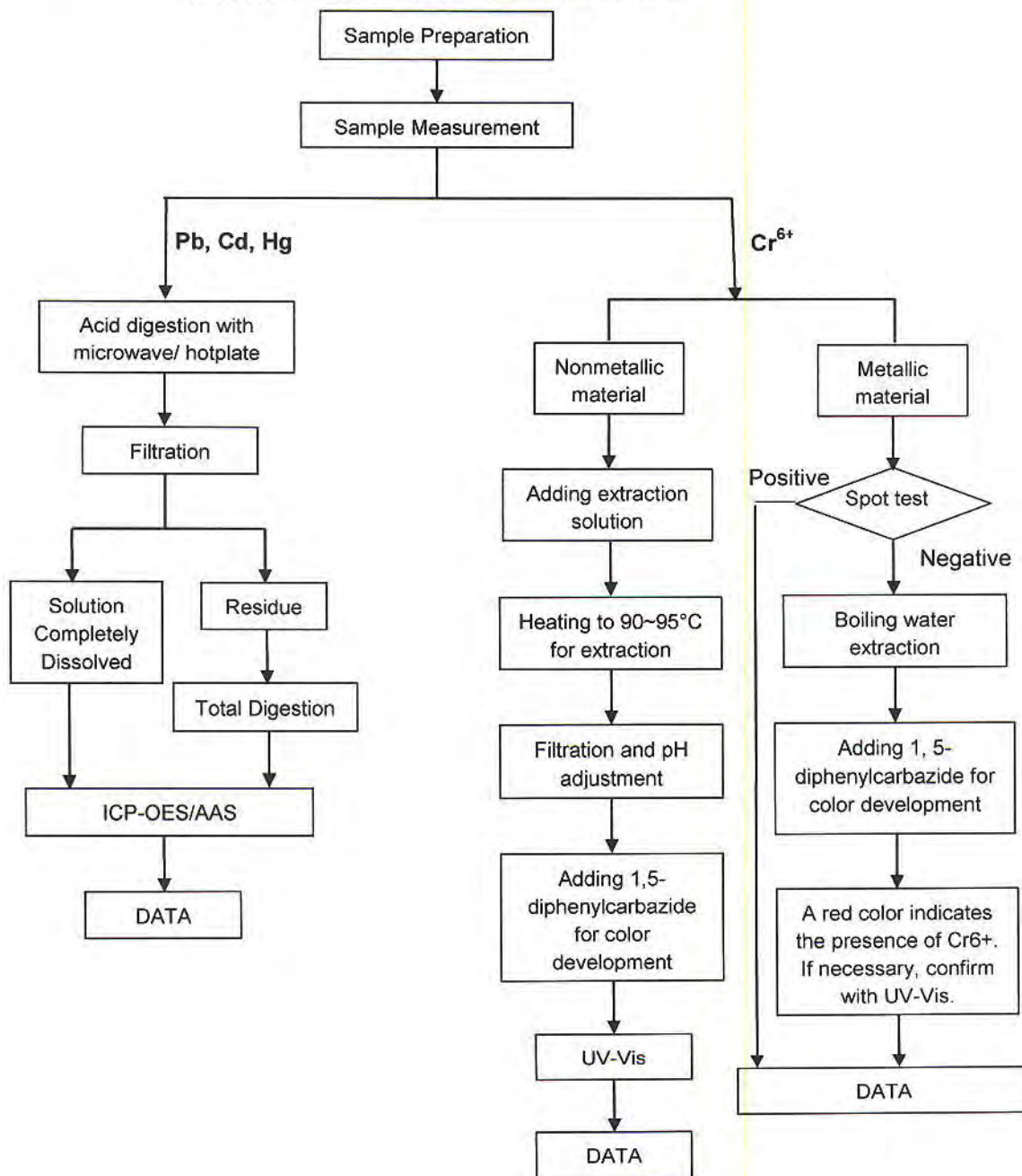
Note :

1. mg/kg = ppm ; 0.1wt% = 1000ppm
2. ND = Not Detected
3. MDL = Method Detection Limit
4. ** = Qualitative analysis (No Unit)
5. # = a. Positive means the presence of CrVI on the tested areas
b. Negative means the absence of CrVI on the tested areas
The detected concentration in boiling-water-extraction solution is equal or greater than 0.02 mg/kg with 50 cm² tested areas.
6. Analyses were subcontracted to SGS Taiwan, Ltd

"This document is issued by the Company subject to its General Conditions of Service printed overleaf, available on request or accessible at www.sgs.com/terms_and_conditions.htm and, for electronic format documents, subject to Terms and Conditions for Electronic Documents at www.sgs.com/terms_e-document.htm. Attention is drawn to the limitation of liability, indemnification and jurisdiction issues defined therein. Any holder of this document is advised that information contained hereon reflects the Company's findings at the time of its intervention only and within the limits of Client's instructions, if any. The Company's sole responsibility is to its Client and this document does not exonerate parties to a transaction from exercising all their rights and obligations under the transaction documents. This document cannot be reproduced except in full, without prior written approval of the Company. Any unauthorized alteration, forgery or falsification of the content or appearance of this document is unlawful and offenders may be prosecuted to the fullest extent of the law. Unless otherwise stated the results shown in this test report refer only to the sample(s) tested and such sample(s) are retained for 60 days only."

L 100103

ANALYSIS FLOWCHART OF HEAVY METALS



"This document is issued by the Company subject to its General Conditions of Service printed overleaf, available on request or accessible at www.sgs.com/terms_and_conditions.htm and, for electronic format documents, subject to Terms and Conditions for Electronic Documents at www.sgs.com/terms_e-document.htm. Attention is drawn to the limitation of liability, indemnification and jurisdiction issues defined therein. Any holder of this document is advised that information contained hereon reflects the Company's findings at the time of its intervention only and within the limits of Client's Instructions, if any. The Company's sole responsibility is to its Client and this document does not exonerate parties to a transaction from exercising all their rights and obligations under the transaction documents. This document cannot be reproduced except in full, without prior written approval of the Company. Any unauthorized alteration, forgery or falsification of the content or appearance of this document is unlawful and offenders may be prosecuted to the fullest extent of the law. Unless otherwise stated the results shown in this test report refer only to the sample(s) tested and such sample(s) are retained for 60 days only."

L 100104

Test Report

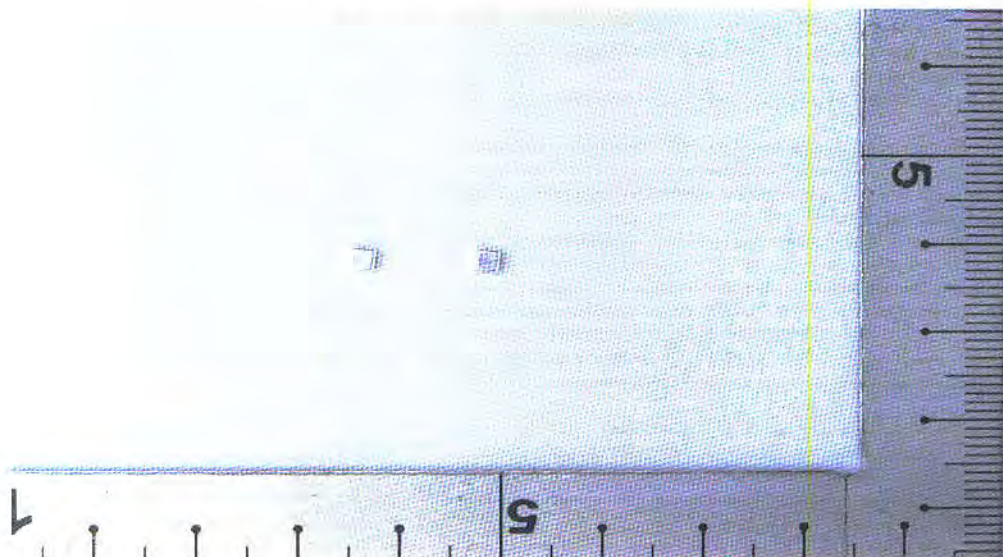
No.: LB12-01094B

March 5, 2012

Page 4 of 4

Sample Photo (As Received):

LB12-01094.003



... End of Report...

"This document is issued by the Company subject to its General Conditions of Service printed overleaf, available on request or accessible at www.sgs.com/terms_and_conditions.htm and, for electronic format documents, subject to Terms and Conditions for Electronic Documents at www.sgs.com/terms_e-document.htm. Attention is drawn to the limitation of liability, indemnification and jurisdiction issues defined therein. Any holder of this document is advised that information contained hereon reflects the Company's findings at the time of its intervention only and within the limits of Client's instructions, if any. The Company's sole responsibility is to its Client and this document does not exonerate parties to a transaction from exercising all their rights and obligations under the transaction documents. This document cannot be reproduced except in full, without prior written approval of the Company. Any unauthorized alteration, forgery or falsification of the content or appearance of this document is unlawful and offenders may be prosecuted to the fullest extent of the law. Unless otherwise stated the results shown in this test report refer only to the sample(s) tested and such sample(s) are retained for 60 days only."

L 100105



Test Report

No.: LB12-01094

March 5, 2012

Page 1 of 4

LITTELFUSE PHILS., INC.

Lima Tech Center, SEZ,
Lipa, Malvar, Batangas

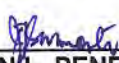
The following sample(s) was/were submitted and identified by/on behalf of the client as:

Product Name : Cap 910-238 / Plating
SGS Sample Number : LB12-01094.001
Received Date : February 21, 2012
Test Performing Date : February 21, 2012 to March 5, 2012
Test Performed : SGS Philippines subcontracted the testing of sample(s) selected by applicant with following results
Test Requested : Selected test(s) as requested by client.
Test Method : Please refer to next page(s).
Test Result(s) : Please refer to next page(s).
Conclusion : Based on the performed tests on submitted sample(s), the results of Lead, Cadmium, Hexavalent chromium and Mercury **comply with** the RoHS Directive 2002/95/EC and its subsequent amendments.

=====

This report will be kept on file for six months from the date of issue.

Signed for and on behalf of
SGS PHILIPPINES, INC.


for **MEDEN L. PENEVRA**
Laboratory Operations Manager

"This document is issued by the Company subject to its General Conditions of Service printed overleaf, available on request or accessible at www.sgs.com/terms_and_conditions.htm and, for electronic format documents, subject to Terms and Conditions for Electronic Documents at www.sgs.com/terms_e-document.htm. Attention is drawn to the limitation of liability, indemnification and jurisdiction issues defined therein. Any holder of this document is advised that information contained hereon reflects the Company's findings at the time of its intervention only and within the limits of Client's Instructions, if any. The Company's sole responsibility is to its Client and this document does not exonerate parties to a transaction from exercising all their rights and obligations under the transaction documents. This document cannot be reproduced except in full, without prior written approval of the Company. Any unauthorized alteration, forgery or falsification of the content or appearance of this document is unlawful and offenders may be prosecuted to the fullest extent of the law. Unless otherwise stated the results shown in this test report refer only to the sample(s) tested and such sample(s) are retained for 60 days only."

L 100094

Test Report

No.: LB12-01094

March 5, 2012

Page 2 of 4

Sample Number : LB12-01094.001
Physical Description : Plating layer of silver colored metal
Item / Batch Number : N/A

RoHS Directive 2002/95/EC

Test Item(s)	Unit	Method	MDL	Result
Cadmium (Cd)	mg/kg	IEC 62321: 2008 application of modified digestion by surface etching and performed by ICP-AES.	2	ND
Lead (Pb)	mg/kg		2	28
Mercury (Hg)	mg/kg		2	ND
Hexavalent Chromium Cr(VI)	**	With reference to IEC 62321: 2008 and performed by Boiling water extraction Method.#	#	Negative

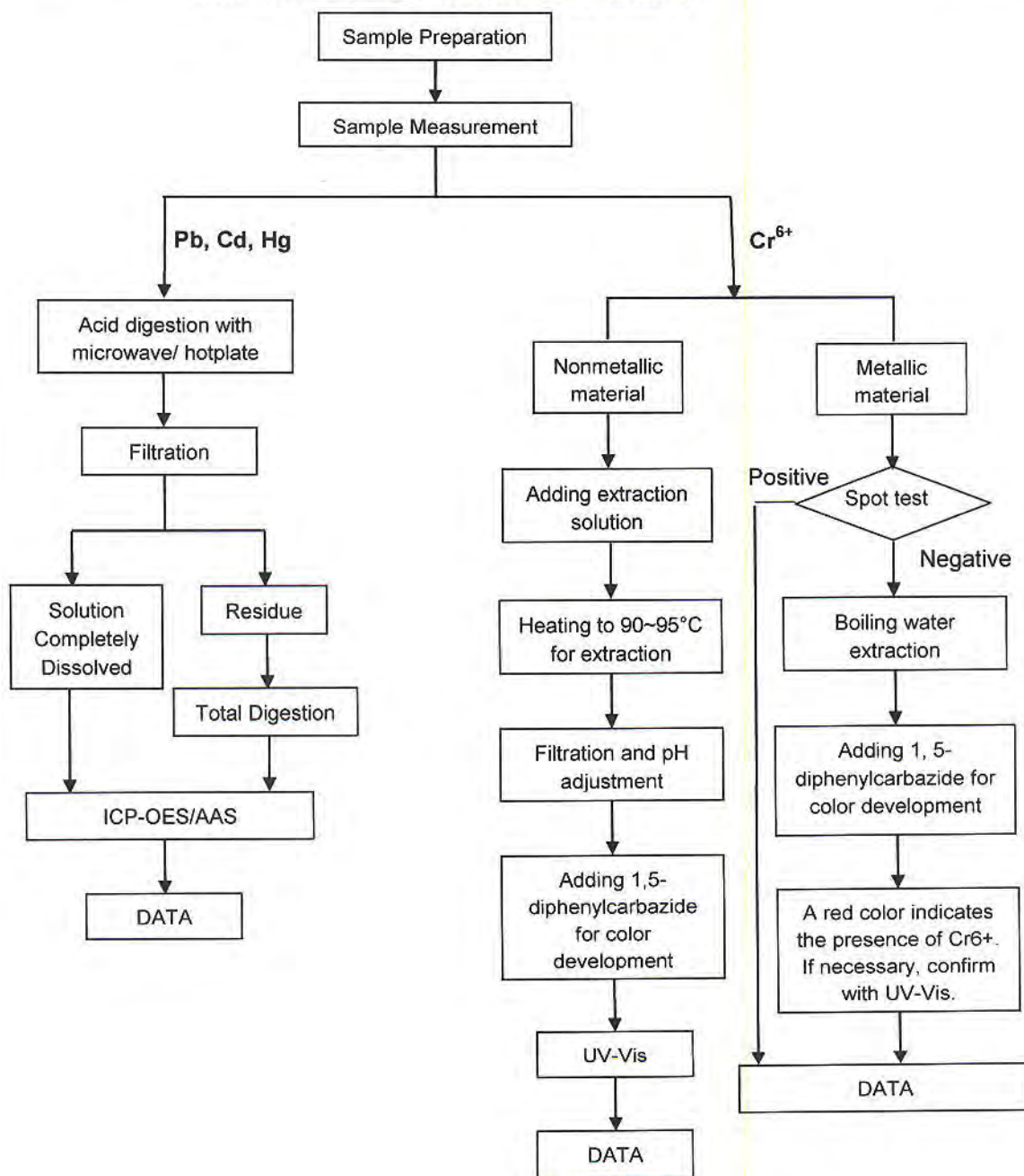
Note :

1. mg/kg = ppm ; 0.1wt% = 1000ppm
2. ND = Not Detected
3. MDL = Method Detection Limit
4. ** = Qualitative analysis (No Unit)
5. # = a. Positive means the presence of CrVI on the tested areas
b. Negative means the absence of CrVI on the tested areas
The detected concentration in boiling-water-extraction solution is equal or greater than 0.02 mg/kg with 50 cm² tested areas.
6. Analyses were subcontracted to SGS Taiwan, Ltd

"This document is issued by the Company subject to its General Conditions of Service printed overleaf, available on request or accessible at www.sgs.com/terms_and_conditions.htm and, for electronic format documents, subject to Terms and Conditions for Electronic Documents at www.sgs.com/terms_e-document.htm. Attention is drawn to the limitation of liability, indemnification and jurisdiction issues defined therein. Any holder of this document is advised that information contained hereon reflects the Company's findings at the time of its intervention only and within the limits of Client's instructions, if any. The Company's sole responsibility is to its Client and this document does not exonerate parties to a transaction from exercising all their rights and obligations under the transaction documents. This document cannot be reproduced except in full, without prior written approval of the Company. Any unauthorized alteration, forgery or falsification of the content or appearance of this document is unlawful and offenders may be prosecuted to the fullest extent of the law. Unless otherwise stated the results shown in this test report refer only to the sample(s) tested and such sample(s) are retained for 60 days only."

L 100095

ANALYSIS FLOWCHART OF HEAVY METALS



"This document is issued by the Company subject to its General Conditions of Service printed overleaf, available on request or accessible at www.sgs.com/terms_and_conditions.htm and, for electronic format documents, subject to Terms and Conditions for Electronic Documents at www.sgs.com/terms_e-document.htm. Attention is drawn to the limitation of liability, indemnification and jurisdiction issues defined therein. Any holder of this document is advised that information contained hereon reflects the Company's findings at the time of its intervention only and within the limits of Client's Instructions, if any. The Company's sole responsibility is to its Client and this document does not exonerate parties to a transaction from exercising all their rights and obligations under the transaction documents. This document cannot be reproduced except in full, without prior written approval of the Company. Any unauthorized alteration, forgery or falsification of the content or appearance of this document is unlawful and offenders may be prosecuted to the fullest extent of the law. Unless otherwise stated the results shown in this test report refer only to the sample(s) tested and such sample(s) are retained for 60 days only."

L 100096

Test Report

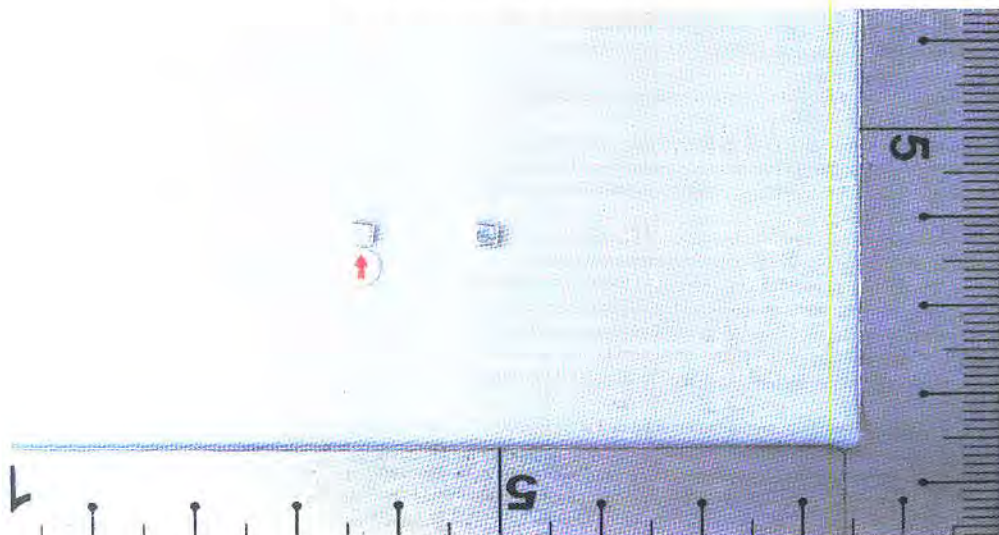
No.: LB12-01094

March 5, 2012

Page 4 of 4

Sample Photo (As Received):

LB12-01094.001



...End of Report...

"This document is issued by the Company subject to its General Conditions of Service printed overleaf, available on request or accessible at www.sgs.com/terms_and_conditions.htm and, for electronic format documents, subject to Terms and Conditions for Electronic Documents at www.sgs.com/terms_e-document.htm. Attention is drawn to the limitation of liability, indemnification and jurisdiction issues defined therein. Any holder of this document is advised that information contained hereon reflects the Company's findings at the time of its intervention only and within the limits of Client's instructions, if any. The Company's sole responsibility is to its Client and this document does not exonerate parties to a transaction from exercising all their rights and obligations under the transaction documents. This document cannot be reproduced except in full, without prior written approval of the Company. Any unauthorized alteration, forgery or falsification of the content or appearance of this document is unlawful and offenders may be prosecuted to the fullest extent of the law. Unless otherwise stated the results shown in this test report refer only to the sample(s) tested and such sample(s) are retained for 60 days only."

L 100097

Test Report

No. : CE/2012/14846A Date : 2012/02/04 Page : 1 of 24

CERAMTEC GMBH
MULTIFUNCTIONAL CERAMICS LUITPOLDSTRASSE 15 D-91207 LAUF, GERMANY



The following sample(s) was/were submitted and identified by/on behalf of the client as:

Sample Description : CERAMIC
Style/Item No. : FREQUENTA C221
Sample Receiving Date : 2012/01/30
Testing Period : 2012/01/30 TO 2012/02/04

Test Result(s) : Please refer to next page(s).

Conclusion : Based on the performed tests on submitted samples, the test results of Cadmium, Lead, Mercury, Hexavalent Chromium Cr(VI), PBBs and PBDEs comply with the limits as set by RoHS Directive 2011/65/EU Annex II; recasting 2002/95/EC.


Chenyu Kung / Operation Manager
Signed for and on behalf of
SGS TAIWAN LTD.
Chemical Laboratory – Taipei

Unless otherwise stated the results shown in this test report refer only to the sample(s) tested. This test report cannot be reproduced, except in full, without prior written permission of the Company. 除非另有說明，此報告結果僅對測試之樣品負責。本報告未經本公司書面許可，不可部分複製。
This document is issued by the Company subject to its General Conditions of Service printed overleaf, available on request or accessible at www.sgs.com/terms_and_conditions.htm and, for electronic format documents, subject to Terms and Conditions for Electronic Documents at www.sgs.com/en/Terms-and-Conditions/Terms-e-Document. Attention is drawn to the limitation of liability, indemnification and jurisdiction issues defined therein. Any holder of this document is advised that information contained hereon reflects the Company's findings at the time of its intervention only and within the limits of Client's instructions, if any. The Company's sole responsibility is to its Client and this document does not exonerate parties to a transaction from exercising all their rights and obligations under the transaction documents. This document cannot be reproduced except in full, without prior written approval of the Company. Any unauthorized alteration, forgery or falsification of the content or appearance of this document is unlawful and offenders may be prosecuted to the fullest extent of the law.

Test Report

No. : CE/2012/14846A Date : 2012/02/04 Page : 2 of 24

CERAMTEC GMBH

MULTIFUNCTIONAL CERAMICS LUITPOLDSTRASSE 15 D-91207 LAUF, GERMANY



Test Result(s)

PART NAME No.1 : CREAM CERAMIC

Test Item(s)	Unit	Method	MDL	Result	Limit
				No.1	
Cadmium (Cd)	mg/kg	With reference to IEC 62321: 2008 and performed by ICP-AES.	2	n.d.	100
Lead (Pb)	mg/kg	With reference to IEC 62321: 2008 and performed by ICP-AES.	2	n.d.	1000
Mercury (Hg)	mg/kg	With reference to IEC 62321: 2008 and performed by ICP-AES.	2	n.d.	1000
Hexavalent Chromium Cr(VI)	mg/kg	With reference to IEC 62321: 2008 and performed by UV-VIS.	2	n.d.	1000
Polychlorinated Biphenyls (PCBs) (CAS No.: 1336-36-3)	mg/kg	With reference to US EPA 3540C method. Analysis was performed by GC/MS.	0.5	n.d.	-
Polychlorinated Terphenyls (PCTs)	mg/kg	With reference to US EPA 3540C method. Analysis was performed by GC/MS.	0.5	n.d.	-
Polychlorinated Naphthalene (PCNs)	mg/kg	With reference to US EPA 3540C method. Analysis was performed by GC/MS.	5	n.d.	-
Alkanes, C10-13, chloro (Short Chain Chlorinated Paraffins) (CAS No.: 85535-84-8)	%	With reference to US EPA 3540C method. Analysis was performed by GC/MS.	0.01	n.d.	-
Perfluorooctane sulfonates (PFOS-Acid, Metal Salt, Amide)	mg/kg	With reference to US EPA 3540C: 1996 method for PFOS Content. Analysis was performed by LC/MS.	10	n.d.	-
PFOA (CAS No.: 335-67-1)	mg/kg	With reference to US EPA 3540C: 1996 method for PFOA Content. Analysis was performed by LC/MS.	10	n.d.	-
Formaldehyde (CAS No.: 50-00-0)	mg/kg	With reference to ISO 17226-1(2008). Analysis was performed by HPLC/DAD.	3	n.d.	-
PVC	**	Analysis was performed by FTIR and FLAME Test.	-	Negative	-

Unless otherwise stated the results shown in this test report refer only to the sample(s) tested. This test report cannot be reproduced, except in full, without prior written permission of the Company. 除非另有說明，此報告結果僅對測試之樣品負責。本報告未經本公司書面許可，不得部分複製。
This document is issued by the Company subject to its General Conditions of Service printed overleaf, available on request or accessible at www.sgs.com/terms_and_conditions.htm.
This document is issued by the Company subject to its General Conditions of Service printed overleaf, available on request or accessible at www.sgs.com/terms_and_conditions.htm.
and, for electronic format documents, subject to Terms and Conditions for Electronic Documents at www.sgs.com/en/Terms-and-Conditions/Terms-e-Document. Attention is drawn to the limitation of liability, indemnification and jurisdiction issues defined therein. Any holder of this document is advised that information contained hereon reflects the Company's findings at the time of its intervention only and within the limits of Client's instructions, if any. The Company's sole responsibility is to its Client and this document does not exonerate parties to a transaction from exercising all their rights and obligations under the transaction documents. This document cannot be reproduced except in full, without prior written approval of the Company. Any unauthorized alteration, forgery or falsification of the content or appearance of this document is unlawful and offenders may be prosecuted to the fullest extent of the law.

Test Report

No. : CE/2012/14846A Date : 2012/02/04 Page : 3 of 24

CERAMTEC GMBH

MULTIFUNCTIONAL CERAMICS LUITPOLDSTRASSE 15 D-91207 LAUF, GERMANY



Test Item(s)	Unit	Method	MDL	Result	Limit
				No.1	
BBP (Benzyl butyl phthalate) (CAS No.: 85-68-7)	%	With reference to EN 14372. Analysis was performed by GC/MS.	0.003	n.d.	-
DEHP (Di- (2-ethylhexyl) phthalate) (CAS No.: 117-81-7)	%	With reference to EN 14372. Analysis was performed by GC/MS.	0.003	n.d.	-
DIDP (Di-isodecyl phthalate) (CAS No.: 26761-40-0)	%	With reference to EN 14372. Analysis was performed by GC/MS.	0.01	n.d.	-
DINP (Di-isononyl phthalate) (CAS No.: 28553-12-0)	%	With reference to EN 14372. Analysis was performed by GC/MS.	0.01	n.d.	-
DNOP (Di-n-octyl phthalate) (CAS No.: 117-84-0)	%	With reference to EN 14372. Analysis was performed by GC/MS.	0.003	n.d.	-
DBP (Dibutyl phthalate) (CAS No.: 84-74-2)	%	With reference to EN 14372. Analysis was performed by GC/MS.	0.003	n.d.	-
Monomethyl dibromodiphenyl methane (DBBT)	mg/kg	With reference to US EPA 8270D method. Analysis was performed by GC/MS.	0.5	n.d.	-
Monomethyl dichlorodiphenyl methane (Ugilec121)	mg/kg	With reference to US EPA 8270D method. Analysis was performed by GC/MS.	0.5	n.d.	-
Monomethyl tetrachlorodiphenyl methane (Ugilec141)	mg/kg	With reference to US EPA 8270D method. Analysis was performed by GC/MS.	0.5	n.d.	-
Organic-tin compounds					
Tributyl Tin (TBT)	mg/kg	With reference to DIN 38407-13. Analysis was performed by GC/FPD.	0.03	n.d.	-
Triphenyl Tin (TphT)	mg/kg	With reference to DIN 38407-13. Analysis was performed by GC/FPD.	0.03	n.d.	-
Halons					
Halon-1211 (CAS No.: 353-59-3)	mg/kg	With reference to US EPA 5021 method. Analysis was performed by GC/MS.	1	n.d.	-
Halon-1301 (CAS No.: 75-63-8)	mg/kg	With reference to US EPA 5021 method. Analysis was performed by GC/MS.	1	n.d.	-
Halon-2402 (CAS No.: 124-73-2)	mg/kg	With reference to US EPA 5021 method. Analysis was performed by GC/MS.	1	n.d.	-

Unless otherwise stated the results shown in this test report refer only to the sample(s) tested. This test report cannot be reproduced, except in full, without prior written permission of the Company. 除非另有說明，此報告結果僅對測試之樣品負責。本報告未經本公司書面許可，不得部分複製。
This document is issued by the Company subject to its General Conditions of Service printed overleaf, available on request or accessible at www.sgs.com/terms_and_conditions.htm and, for electronic format documents, subject to Terms and Conditions for Electronic Documents at www.sgs.com/en/Terms-and-Conditions/Terms-e-Document. Attention is drawn to the limitation of liability, indemnification and jurisdiction issues defined therein. Any holder of this document is advised that information contained hereon reflects the Company's findings at the time of its intervention only and within the limits of Client's instructions, if any. The Company's sole responsibility is to its Client and this document does not exonerate parties to a transaction from exercising all their rights and obligations under the transaction documents. This document cannot be reproduced except in full, without prior written approval of the Company. Any unauthorized alteration, forgery or falsification of the content or appearance of this document is unlawful and offenders may be prosecuted to the fullest extent of the law.

Test Report

No. : CE/2012/14846A Date : 2012/02/04 Page : 4 of 24

CERAMTEC GMBH

MULTIFUNCTIONAL CERAMICS LUITPOLDSTRASSE 15 D-91207 LAUF, GERMANY



Test Item(s)	Unit	Method	MDL	Result	Limit
				No.1	
Halogen					
Halogen-Fluorine (F) (CAS No.: 14762-94-8)	mg/kg	With reference to BS EN 14582:2007. Analysis was performed by IC.	50	n.d.	-
Halogen-Chlorine (Cl) (CAS No.: 22537-15-1)	mg/kg	With reference to BS EN 14582:2007. Analysis was performed by IC.	50	n.d.	-
Halogen-Bromine (Br) (CAS No.: 10097-32-2)	mg/kg	With reference to BS EN 14582:2007. Analysis was performed by IC.	50	n.d.	-
Halogen-Iodine (I) (CAS No.: 14362-44-8)	mg/kg	With reference to BS EN 14582:2007. Analysis was performed by IC.	50	n.d.	-
Asbestos					
Actinolite (CAS No.: 77536-66-4)	%	With reference to EPA 600/R-93/116 method. Analysis was performed by SM, PLM and XRD.	1	Negative	-
Amosite (CAS No.: 12172-73-5)	%	With reference to EPA 600/R-93/116 method. Analysis was performed by SM, PLM and XRD.	1	Negative	-
Anthophyllite (CAS No.: 77536-67-5)	%	With reference to EPA 600/R-93/116 method. Analysis was performed by SM, PLM and XRD.	1	Negative	-
Chrysotile (CAS No.: 12001-29-5)	%	With reference to EPA 600/R-93/116 method. Analysis was performed by SM, PLM and XRD.	1	Negative	-
Crocidolite (CAS No.: 12001-28-4)	%	With reference to EPA 600/R-93/116 method. Analysis was performed by SM, PLM and XRD.	1	Negative	-
Tremolite (CAS No.: 77536-68-6)	%	With reference to EPA 600/R-93/116 method. Analysis was performed by SM, PLM and XRD.	1	Negative	-

Unless otherwise stated the results shown in this test report refer only to the sample(s) tested. This test report cannot be reproduced, except in full, without prior written permission of the Company. 除非另有說明，此報告結果僅對測試之樣品負責。本報告未經本公司書面許可，不可部分複製。
This document is issued by the Company subject to its General Conditions of Service printed overleaf, available on request or accessible at www.sgs.com/terms_and_conditions.htm and, for electronic format documents, subject to Terms and Conditions for Electronic Documents at www.sgs.com/en/Terms-and-Conditions/Terms-e-Document. Attention is drawn to the limitation of liability, indemnification and jurisdiction issues defined therein. Any holder of this document is advised that information contained hereon reflects the Company's findings at the time of its intervention only and within the limits of Client's instructions, if any. The Company's sole responsibility is to its Client and this document does not exonerate parties to a transaction from exercising all their rights and obligations under the transaction documents. This document cannot be reproduced except in full, without prior written approval of the Company. Any unauthorized alteration, forgery or falsification of the content or appearance of this document is unlawful and offenders may be prosecuted to the fullest extent of the law.

Test Report

No. : CE/2012/14846A Date : 2012/02/04 Page : 5 of 24

CERAMTEC GMBH

MULTIFUNCTIONAL CERAMICS LUITPOLDSTRASSE 15 D-91207 LAUF, GERMANY



Test Item(s)	Unit	Method	MDL	Result	Limit
				No.1	
Sum of PBBs	mg/kg	With reference to IEC 62321: 2008 and performed by GC/MS.	-	n.d.	1000
Monobromobiphenyl			5	n.d.	-
Dibromobiphenyl			5	n.d.	-
Tribromobiphenyl			5	n.d.	-
Tetrabromobiphenyl			5	n.d.	-
Pentabromobiphenyl			5	n.d.	-
Hexabromobiphenyl			5	n.d.	-
Heptabromobiphenyl			5	n.d.	-
Octabromobiphenyl			5	n.d.	-
Nonabromobiphenyl			5	n.d.	-
Decabromobiphenyl			5	n.d.	-
Sum of PBDEs			-	n.d.	1000
Monobromodiphenyl ether			5	n.d.	-
Dibromodiphenyl ether			5	n.d.	-
Tribromodiphenyl ether			5	n.d.	-
Tetrabromodiphenyl ether			5	n.d.	-
Pentabromodiphenyl ether			5	n.d.	-
Hexabromodiphenyl ether			5	n.d.	-
Heptabromodiphenyl ether			5	n.d.	-
Octabromodiphenyl ether			5	n.d.	-
Nonabromodiphenyl ether			5	n.d.	-
Decabromodiphenyl ether			5	n.d.	-
AZO					
1): 4-AMINODIPHENYL (CAS No.: 92-67-1)	mg/kg	With reference to LFGB 82.02-2. Analysis was performed by GC/MS.	3	n.d.	-
2): BENZIDINE (CAS No.: 92-87-5)	mg/kg	With reference to LFGB 82.02-2. Analysis was performed by GC/MS.	3	n.d.	-
3): 4-CHLORO-O-TOLUIDINE (CAS No.: 95-69-2)	mg/kg	With reference to LFGB 82.02-2. Analysis was performed by GC/MS.	3	n.d.	-
4): 2-NAPHTHYLAMINE (CAS No.: 91-59-8)	mg/kg	With reference to LFGB 82.02-2. Analysis was performed by GC/MS.	3	n.d.	-
5): O-AMINOAZOTOLUENE (CAS No.: 97-56-3)	mg/kg	With reference to LFGB 82.02-2. Analysis was performed by GC/MS.	3	n.d.	-

Unless otherwise stated the results shown in this test report refer only to the sample(s) tested. This test report cannot be reproduced, except in full, without prior written permission of the Company. 除非另有說明，此報告結果僅對測試之樣品負責。本報告未經本公司書面許可，不可部分複製。
This document is issued by the Company subject to its General Conditions of Service printed overleaf, available on request or accessible at www.sgs.com/terms_and_conditions.htm and, for electronic format documents, subject to Terms and Conditions for Electronic Documents at www.sgs.com/en/Terms-and-Conditions/Terms-e-Document. Attention is drawn to the limitation of liability, indemnification and jurisdiction issues defined therein. Any holder of this document is advised that information contained hereon reflects the Company's findings at the time of its intervention only and within the limits of Client's instructions, if any. The Company's sole responsibility is to its Client and this document does not exonerate parties to a transaction from exercising all their rights and obligations under the transaction documents. This document cannot be reproduced except in full, without prior written approval of the Company. Any unauthorized alteration, forgery or falsification of the content or appearance of this document is unlawful and offenders may be prosecuted to the fullest extent of the law.

Test Report

No. : CE/2012/14846A Date : 2012/02/04 Page : 6 of 24

CERAMTEC GMBH

MULTIFUNCTIONAL CERAMICS LUITPOLDSTRASSE 15 D-91207 LAUF, GERMANY



Test Item(s)	Unit	Method	MDL	Result	Limit
				No.1	
6): 2-AMINO-4-NITROTOLUENE (CAS No.: 99-55-8)	mg/kg	With reference to LFGB 82.02-2. Analysis was performed by GC/MS.	3	n.d.	-
7): P-CHLOROANILINE (CAS No.: 106-47-8)	mg/kg	With reference to LFGB 82.02-2. Analysis was performed by GC/MS.	3	n.d.	-
8): 2,4-DIAMINOANISOLE (CAS No.: 615-05-4)	mg/kg	With reference to LFGB 82.02-2. Analysis was performed by GC/MS.	3	n.d.	-
9): 4,4'-DIAMINODIPHENYLMETHANE (CAS No.: 101-77-9)	mg/kg	With reference to LFGB 82.02-2. Analysis was performed by GC/MS.	3	n.d.	-
10): 3,3'-DICHLOOROBENZIDINE (CAS No.: 91-94-1)	mg/kg	With reference to LFGB 82.02-2. Analysis was performed by GC/MS.	3	n.d.	-
11): 3,3'-DIMETHOXYBENZIDINE (CAS No.: 119-90-4)	mg/kg	With reference to LFGB 82.02-2. Analysis was performed by GC/MS.	3	n.d.	-
12): 3,3'-DIMETHYLBENZIDINE (CAS No.: 119-93-7)	mg/kg	With reference to LFGB 82.02-2. Analysis was performed by GC/MS.	3	n.d.	-
13): 3,3'-DIMETHYL-4,4'-DIAMINODIPHENYLMETHANE (CAS No.: 838-88-0)	mg/kg	With reference to LFGB 82.02-2. Analysis was performed by GC/MS.	3	n.d.	-
14): P-CRESIDINE (2-METHOXY-5-METHYLANILINE) (CAS No.: 120-71-8)	mg/kg	With reference to LFGB 82.02-2. Analysis was performed by GC/MS.	3	n.d.	-
15): 4,4'-METHYLENE-BIS- (2-CHLOROANILINE) (CAS No.: 101-14-4)	mg/kg	With reference to LFGB 82.02-2. Analysis was performed by GC/MS.	3	n.d.	-
16): 4,4'-OXYDIANILINE (CAS No.: 101-80-4)	mg/kg	With reference to LFGB 82.02-2. Analysis was performed by GC/MS.	3	n.d.	-
17): 4,4'-THIODIANILINE (CAS No.: 139-65-1)	mg/kg	With reference to LFGB 82.02-2. Analysis was performed by GC/MS.	3	n.d.	-
18): O-TOLUIDINE (CAS No.: 95-53-4)	mg/kg	With reference to LFGB 82.02-2. Analysis was performed by GC/MS.	3	n.d.	-
19): 2,4-TOLUYLENEDIAMINE (CAS No.: 95-80-7)	mg/kg	With reference to LFGB 82.02-2. Analysis was performed by GC/MS.	3	n.d.	-
20): 2,4,5-TRIMETHYLANILINE (CAS No.: 137-17-7)	mg/kg	With reference to LFGB 82.02-2. Analysis was performed by GC/MS.	3	n.d.	-
21): O-ANISIDINE (CAS No.: 90-04-0)	mg/kg	With reference to LFGB 82.02-2. Analysis was performed by GC/MS.	3	n.d.	-

Unless otherwise stated the results shown in this test report refer only to the sample(s) tested. This test report cannot be reproduced, except in full, without prior written permission of the Company. 除非另有說明，此報告結果僅對測試之樣品負責。本報告只限本公司客戶使用，不得部分複製。
This document is issued by the Company subject to its General Conditions of Service printed overleaf, available on request or accessible at www.sgs.com/terms_and_conditions.htm.
This document is issued by the Company subject to its General Conditions of Service printed overleaf, available on request or accessible at www.sgs.com/en/Terms-and-Conditions/Terms-e-Document. Attention is drawn to the and, for electronic format documents, subject to Terms and Conditions for Electronic Documents at www.sgs.com/en/Terms-and-Conditions/Terms-e-Document. Attention is drawn to the limitation of liability, indemnification and jurisdiction issues defined therein. Any holder of this document is advised that information contained hereon reflects the Company's findings at the time of its intervention only and within the limits of Client's instructions, if any. The Company's sole responsibility is to its Client and this document does not exonerate parties to a transaction from exercising all their rights and obligations under the transaction documents. This document cannot be reproduced except in full, without prior written approval of the Company. Any unauthorized alteration, forgery or falsification of the content or appearance of this document is unlawful and offenders may be prosecuted to the fullest extent of the law.

Test Report

No. : CE/2012/14846A Date : 2012/02/04 Page : 7 of 24

CERAMTEC GMBH

MULTIFUNCTIONAL CERAMICS LUITPOLDSTRASSE 15 D-91207 LAUF, GERMANY



Test Item(s)	Unit	Method	MDL	Result	Limit
				No.1	
22): P-AMINOAZOBENZENE (CAS No.: 60-09-3)	mg/kg	With reference to LFGB 82.02-2. Analysis was performed by GC/MS.	3	n.d.	-
23): 2,4-XYLIDINE (CAS No.: 95-68-1)	mg/kg	With reference to LFGB 82.02-2. Analysis was performed by GC/MS.	3	n.d.	-
24): 2,6-XYLIDINE (CAS No.: 87-62-7)	mg/kg	With reference to LFGB 82.02-2. Analysis was performed by GC/MS.	3	n.d.	-
CFC's (Chlorofluorocarbons)					
Group I					
Chlorofluorocarbon-11 (CAS No.: 75-69-4)	mg/kg	With reference to US EPA 5021 method. Analysis was performed by GC/MS.	1	n.d.	-
Chlorofluorocarbon-12 (CAS No.: 75-71-8)	mg/kg	With reference to US EPA 5021 method. Analysis was performed by GC/MS.	1	n.d.	-
Chlorofluorocarbon-113 (CAS No.: 76-13-1)	mg/kg	With reference to US EPA 5021 method. Analysis was performed by GC/MS.	1	n.d.	-
Chlorofluorocarbon-114 (CAS No.: 76-14-2)	mg/kg	With reference to US EPA 5021 method. Analysis was performed by GC/MS.	1	n.d.	-
Chlorofluorocarbon-115 (CAS No.: 76-15-3)	mg/kg	With reference to US EPA 5021 method. Analysis was performed by GC/MS.	1	n.d.	-
Group III					
Chlorofluorocarbon-13 (CAS No.: 75-72-9)	mg/kg	With reference to US EPA 5021 method. Analysis was performed by GC/MS.	1	n.d.	-
Chlorofluorocarbon-111 (CAS No.: 354-56-3)	mg/kg	With reference to US EPA 5021 method. Analysis was performed by GC/MS.	1	n.d.	-
Chlorofluorocarbon-112 (CAS No.: 76-12-0)	mg/kg	With reference to US EPA 5021 method. Analysis was performed by GC/MS.	1	n.d.	-
Chlorofluorocarbon-211 (CAS No.: 422-78-6)	mg/kg	With reference to US EPA 5021 method. Analysis was performed by GC/MS.	1	n.d.	-

Unless otherwise stated the results shown in this test report refer only to the sample(s) tested. This test report cannot be reproduced, except in full, without prior written permission of the Company. 除非另有說明，此報告結果僅對測試之樣品負責。本報告人經本公司書面許可，不可部分複製。
This document is issued by the Company subject to its General Conditions of Service printed overleaf, available on request or accessible at www.sgs.com/terms_and_conditions.html and, for electronic format documents, subject to Terms and Conditions for Electronic Documents at www.sgs.com/en/Terms-and-Conditions/Terms-e-Documents. Attention is drawn to the limitation of liability, indemnification and jurisdiction issues defined therein. Any holder of this document is advised that information contained hereon reflects the Company's findings at the time of its intervention only and within the limits of Client's instructions, if any. The Company's sole responsibility is to its Client and this document does not exonerate parties to a transaction from exercising all their rights and obligations under the transaction documents. This document cannot be reproduced except in full, without prior written approval of the Company. Any unauthorized alteration, forgery or falsification of the content or appearance of this document is unlawful and offenders may be prosecuted to the fullest extent of the law.

Test Report

No. : CE/2012/14846A Date : 2012/02/04 Page : 8 of 24

CERAMTEC GMBH

MULTIFUNCTIONAL CERAMICS LUITPOLDSTRASSE 15 D-91207 LAUF, GERMANY



Test Item(s)	Unit	Method	MDL	Result	Limit
				No.1	
Chlorofluorocarbon-212 (CAS No.: 3182-26-1)	mg/kg	With reference to US EPA 5021 method. Analysis was performed by GC/MS.	1	n.d.	-
Chlorofluorocarbon-213 (CAS No.: 2354-06-5)	mg/kg	With reference to US EPA 5021 method. Analysis was performed by GC/MS.	1	n.d.	-
Chlorofluorocarbon-214 (CAS No.: 29255-31-0)	mg/kg	With reference to US EPA 5021 method. Analysis was performed by GC/MS.	1	n.d.	-
Chlorofluorocarbon-215 (CAS No.: 4259-43-2)	mg/kg	With reference to US EPA 5021 method. Analysis was performed by GC/MS.	1	n.d.	-
Chlorofluorocarbon-216 (CAS No.: 661-97-2)	mg/kg	With reference to US EPA 5021 method. Analysis was performed by GC/MS.	1	n.d.	-
Chlorofluorocarbon-217 (CAS No.: 422-86-6)	mg/kg	With reference to US EPA 5021 method. Analysis was performed by GC/MS.	1	n.d.	-
CHCs (Chlorinate hydrocarbon)					
1,1,1,2-Tetrachloroethane (CAS No.: 630-20-6)	mg/kg	With reference to US EPA 5021 method. Analysis was performed by GC/MS.	1	n.d.	-
1,1,1-Trichloroethane (CAS No.: 71-55-6)	mg/kg	With reference to US EPA 5021 method. Analysis was performed by GC/MS.	1	n.d.	-
1,1,2,2-Tetrachloroethane (CAS No.: 79-34-5)	mg/kg	With reference to US EPA 5021 method. Analysis was performed by GC/MS.	1	n.d.	-
1,1,2-Trichloroethane (CAS No.: 79-00-5)	mg/kg	With reference to US EPA 5021 method. Analysis was performed by GC/MS.	1	n.d.	-
1,1-Dichloroethane (CAS No.: 75-34-3)	mg/kg	With reference to US EPA 5021 method. Analysis was performed by GC/MS.	1	n.d.	-
1,1-Dichloroethene (CAS No.: 75-35-4)	mg/kg	With reference to US EPA 5021 method. Analysis was performed by GC/MS.	1	n.d.	-

Unless otherwise stated the results shown in this test report refer only to the sample(s) tested. This test report cannot be reproduced, except in full, without prior written permission of the Company. 除非另有說明，此報告結果僅針對測試之樣品負責。本報告未經本公司書面許可，不得部分複製。
This document is issued by the Company subject to its General Conditions of Service printed overleaf, available on request or accessible at www.sgs.com/terms_and_conditions.htm.
This document is issued by the Company subject to its General Conditions of Service printed overleaf, available on request or accessible at www.sgs.com/terms_and_conditions.htm.
and, for electronic format documents, subject to Terms and Conditions for Electronic Documents at www.sgs.com/terms_and_conditions.htm. Attention is drawn to the limitation of liability, indemnification and jurisdiction issues defined therein. Any holder of this document is advised that information contained hereon reflects the Company's findings at the time of its intervention only and within the limits of Client's instructions, if any. The Company's sole responsibility is to its Client and this document does not exonerate parties to a transaction from exercising all their rights and obligations under the transaction documents. This document cannot be reproduced except in full, without prior written approval of the Company. Any unauthorized alteration, forgery or falsification of the content or appearance of this document is unlawful and offenders may be prosecuted to the fullest extent of the law.

Test Report

No. : CE/2012/14846A Date : 2012/02/04 Page : 9 of 24

CERAMTEC GMBH
MULTIFUNCTIONAL CERAMICS LUITPOLDSTRASSE 15 D-91207 LAUF, GERMANY



Test Item(s)	Unit	Method	MDL	Result	Limit
				No.1	
1,1-Dichloropropene (CAS No.: 563-58-6)	mg/kg	With reference to US EPA 5021 method. Analysis was performed by GC/MS.	1	n.d.	-
1,2,3-Trichloropropane (CAS No.: 96-18-4)	mg/kg	With reference to US EPA 5021 method. Analysis was performed by GC/MS.	1	n.d.	-
1,2-Dichloroethane (CAS No.: 107-06-2)	mg/kg	With reference to US EPA 5021 method. Analysis was performed by GC/MS.	1	n.d.	-
1,2-Dichloropropane (CAS No.: 78-87-5)	mg/kg	With reference to US EPA 5021 method. Analysis was performed by GC/MS.	1	n.d.	-
1,3-Dichloropropane (CAS No.: 142-28-9)	mg/kg	With reference to US EPA 5021 method. Analysis was performed by GC/MS.	1	n.d.	-
2,2-Dichloropropane (CAS No.: 594-20-7)	mg/kg	With reference to US EPA 5021 method. Analysis was performed by GC/MS.	1	n.d.	-
Carbon tetrachloride (CAS No.: 56-23-5)	mg/kg	With reference to US EPA 5021 method. Analysis was performed by GC/MS.	1	n.d.	-
Chloroethane (CAS No.: 75-00-3)	mg/kg	With reference to US EPA 5021 method. Analysis was performed by GC/MS.	1	n.d.	-
Chloroform (CAS No.: 67-66-3)	mg/kg	With reference to US EPA 5021 method. Analysis was performed by GC/MS.	1	n.d.	-
Chloromethane (CAS No.: 74-87-3)	mg/kg	With reference to US EPA 5021 method. Analysis was performed by GC/MS.	1	n.d.	-
cis-1,2-Dichloroethene (CAS No.: 156-59-2)	mg/kg	With reference to US EPA 5021 method. Analysis was performed by GC/MS.	1	n.d.	-
cis-1,3-Dichloropropene (CAS No.: 10061-01-5)	mg/kg	With reference to US EPA 5021 method. Analysis was performed by GC/MS.	1	n.d.	-

Unless otherwise stated the results shown in this test report refer only to the sample(s) tested. This test report cannot be reproduced, except in full, without prior written permission of the Company. 除非另有說明，此報告結果僅對測試之樣品負責。本報告未經本公司同意，不得全部或局部複製。
This document is issued by the Company subject to its General Conditions of Service printed overleaf, available on request or accessible at www.sgs.com/terms_and_conditions.htm and, for electronic format documents, subject to Terms and Conditions for Electronic Documents at www.sgs.com/en/Terms-and-Conditions/Terms-e-Document. Attention is drawn to the limitation of liability, indemnification and jurisdiction issues defined therein. Any holder of this document is advised that information contained hereon reflects the Company's findings at the time of its intervention only and within the limits of Client's instructions, if any. The Company's sole responsibility is to its Client and this document does not exonerate parties to a transaction from exercising all their rights and obligations under the transaction documents. This document cannot be reproduced except in full, without prior written approval of the Company. Any unauthorized alteration, forgery or falsification of the content or appearance of this document is unlawful and offenders may be prosecuted to the fullest extent of the law.

Test Report

No. : CE/2012/14846A Date : 2012/02/04 Page : 10 of 24

CERAMTEC GMBH

MULTIFUNCTIONAL CERAMICS LUITPOLDSTRASSE 15 D-91207 LAUF, GERMANY



Test Item(s)	Unit	Method	MDL	Result	Limit
				No.1	
Hexachlorobutadiene (CAS No.: 87-68-3)	mg/kg	With reference to US EPA 5021 method. Analysis was performed by GC/MS.	1	n.d.	-
Methylene Chloride (CAS No.: 75-09-2)	mg/kg	With reference to US EPA 5021 method. Analysis was performed by GC/MS.	1	n.d.	-
Tetrachloroethene (CAS No.: 127-18-4)	mg/kg	With reference to US EPA 5021 method. Analysis was performed by GC/MS.	1	n.d.	-
trans-1,2-Dichloroethene (CAS No.: 156-60-5)	mg/kg	With reference to US EPA 5021 method. Analysis was performed by GC/MS.	1	n.d.	-
trans-1,3-Dichloropropene (CAS No.: 10061-02-6)	mg/kg	With reference to US EPA 5021 method. Analysis was performed by GC/MS.	1	n.d.	-
Trichloroethylene (CAS No.: 79-01-6)	mg/kg	With reference to US EPA 5021 method. Analysis was performed by GC/MS.	1	n.d.	-
HCFCs (Hydrochlorofluorocarbons)					
HCFC-21 (CAS No.: 75-43-4)	mg/kg	With reference to US EPA 5021 method. Analysis was performed by GC/MS.	1	n.d.	-
HCFC-22 (CAS No.: 75-45-6)	mg/kg	With reference to US EPA 5021 method. Analysis was performed by GC/MS.	1	n.d.	-
HCFC-31 (CAS No.: 593-70-4)	mg/kg	With reference to US EPA 5021 method. Analysis was performed by GC/MS.	1	n.d.	-
HCFC-121 (CAS No.: 354-14-3)	mg/kg	With reference to US EPA 5021 method. Analysis was performed by GC/MS.	1	n.d.	-
HCFC-122 (CAS No.: 354-21-2)	mg/kg	With reference to US EPA 5021 method. Analysis was performed by GC/MS.	1	n.d.	-

Unless otherwise stated the results shown in this test report refer only to the sample(s) tested. This test report cannot be reproduced, except in full, without prior written permission of the Company. 除非另有說明，此報告結果僅對測試之樣品負責。本報告及據本公司同意，本司部分複製，available on request or accessible at www.sgs.com/terms_and_conditions.htm. This document is issued by the Company subject to its General Conditions of Service printed overleaf, available on request or accessible at www.sgs.com/en/Terms-and-Conditions/Terms-e-Documents. Attention is drawn to the and, for electronic format documents, subject to Terms and Conditions for Electronic Documents at www.sgs.com/en/Terms-and-Conditions/Terms-e-Documents. Information contained herein reflects the Company's findings at the time of its intervention only and within the limits of Client's instructions, if any. The Company's sole responsibility is to its Client and this document does not exonerate parties to a transaction from exercising all their rights and obligations under the transaction documents. This document cannot be reproduced except in full, without prior written approval of the Company. Any unauthorized alteration, forgery or falsification of the content or appearance of this document is unlawful and offenders may be prosecuted to the fullest extent of the law.

Test Report

No. : CE/2012/14846A Date : 2012/02/04 Page : 11 of 24

CERAMTEC GMBH

MULTIFUNCTIONAL CERAMICS LUITPOLDSTRASSE 15 D-91207 LAUF, GERMANY



Test Item(s)	Unit	Method	MDL	Result	Limit
				No.1	
HCFC-123 (CAS No.: 306-83-2)	mg/kg	With reference to US EPA 5021 method. Analysis was performed by GC/MS.	1	n.d.	-
HCFC-124 (CAS No.: 2837-89-0)	mg/kg	With reference to US EPA 5021 method. Analysis was performed by GC/MS.	1	n.d.	-
HCFC-131 (CAS No.: 359-28-4)	mg/kg	With reference to US EPA 5021 method. Analysis was performed by GC/MS.	1	n.d.	-
HCFC-132b (CAS No.: 1649-08-7)	mg/kg	With reference to US EPA 5021 method. Analysis was performed by GC/MS.	1	n.d.	-
HCFC-133a (CAS No.: 75-88-7)	mg/kg	With reference to US EPA 5021 method. Analysis was performed by GC/MS.	1	n.d.	-
HCFC-141b (CAS No.: 1717-00-6)	mg/kg	With reference to US EPA 5021 method. Analysis was performed by GC/MS.	1	n.d.	-
HCFC-142b (CAS No.: 75-68-3)	mg/kg	With reference to US EPA 5021 method. Analysis was performed by GC/MS.	1	n.d.	-
HCFC-221 (CAS No.: 422-26-4)	mg/kg	With reference to US EPA 5021 method. Analysis was performed by GC/MS.	1	n.d.	-
HCFC-222 (CAS No.: 422-49-1)	mg/kg	With reference to US EPA 5021 method. Analysis was performed by GC/MS.	1	n.d.	-
HCFC-223 (CAS No.: 422-52-6)	mg/kg	With reference to US EPA 5021 method. Analysis was performed by GC/MS.	1	n.d.	-
HCFC-224 (CAS No.: 422-54-8)	mg/kg	With reference to US EPA 5021 method. Analysis was performed by GC/MS.	1	n.d.	-
HCFC-225ca (CAS No.: 422-56-0)	mg/kg	With reference to US EPA 5021 method. Analysis was performed by GC/MS.	1	n.d.	-

Unless otherwise stated the results shown in this test report refer only to the sample(s) tested. This test report cannot be reproduced, except in full, without prior written permission of the Company. 除非另有說明，此報告結果僅對測試之樣品負責。本報告未經本公司書面許可，不得部分複製。
This document is issued by the Company subject to its General Conditions of Service printed overleaf, available on request or accessible at www.sgs.com/terms_and_conditions.htm and, for electronic format documents, subject to Terms and Conditions for Electronic Documents at www.sgs.com/en/Terms-and-Conditions/Terms-e-Document. Attention is drawn to the limitation of liability, indemnification and jurisdiction issues defined therein. Any holder of this document is advised that information contained hereon reflects the Company's findings at the time of its intervention only and within the limits of Client's instructions, if any. The Company's sole responsibility is to its Client and this document does not exonerate parties to a transaction from exercising all their rights and obligations under the transaction documents. This document cannot be reproduced except in full, without prior written approval of the Company. Any unauthorized alteration, forgery or falsification of the content or appearance of this document is unlawful and offenders may be prosecuted to the fullest extent of the law.

Test Report

No. : CE/2012/14846A Date : 2012/02/04 Page : 12 of 24

CERAMTEC GMBH
MULTIFUNCTIONAL CERAMICS LUITPOLDSTRASSE 15 D-91207 LAUF, GERMANY



Test Item(s)	Unit	Method	MDL	Result	Limit
				No.1	
HCFC-225cb (CAS No.: 507-55-1)	mg/kg	With reference to US EPA 5021 method. Analysis was performed by GC/MS.	1	n.d.	-
HCFC-226 (CAS No.: 431-87-8)	mg/kg	With reference to US EPA 5021 method. Analysis was performed by GC/MS.	1	n.d.	-
HCFC-231 (CAS No.: 421-94-3)	mg/kg	With reference to US EPA 5021 method. Analysis was performed by GC/MS.	1	n.d.	-
HCFC-232 (CAS No.: 460-89-9)	mg/kg	With reference to US EPA 5021 method. Analysis was performed by GC/MS.	1	n.d.	-
HCFC-233 (CAS No.: 7125-84-0)	mg/kg	With reference to US EPA 5021 method. Analysis was performed by GC/MS.	1	n.d.	-
HCFC-234 (CAS No.: 425-94-5)	mg/kg	With reference to US EPA 5021 method. Analysis was performed by GC/MS.	1	n.d.	-
HCFC-235 (CAS No.: 460-92-4)	mg/kg	With reference to US EPA 5021 method. Analysis was performed by GC/MS.	1	n.d.	-
HCFC-241 (CAS No.: 666-27-3)	mg/kg	With reference to US EPA 5021 method. Analysis was performed by GC/MS.	1	n.d.	-
HCFC-242 (CAS No.: 460-63-9)	mg/kg	With reference to US EPA 5021 method. Analysis was performed by GC/MS.	1	n.d.	-
HCFC-243 (CAS No.: 460-69-5)	mg/kg	With reference to US EPA 5021 method. Analysis was performed by GC/MS.	1	n.d.	-
HCFC-244	mg/kg	With reference to US EPA 5021 method. Analysis was performed by GC/MS.	1	n.d.	-
HCFC-251 (CAS No.: 421-41-0)	mg/kg	With reference to US EPA 5021 method. Analysis was performed by GC/MS.	1	n.d.	-

Unless otherwise stated the results shown in this test report refer only to the sample(s) tested. This test report cannot be reproduced, except in full, without prior written permission of the Company. 除非另有說明，此報告結果僅對測試之樣品負責。本報告未經本公司書面許可，不得部分複製。
This document is issued by the Company subject to its General Conditions of Service printed overleaf, available on request or accessible at www.sgs.com/terms_and_conditions.htm and, for electronic format documents, subject to Terms and Conditions for Electronic Documents at www.sgs.com/en/Terms-and-Conditions/Terms-e-Document. Attention is drawn to the limitation of liability, indemnification and jurisdiction issues defined therein. Any holder of this document is advised that information contained hereon reflects the Company's findings at the time of its intervention only and within the limits of Client's instructions, if any. The Company's sole responsibility is to its Client and this document does not exonerate parties to a transaction from exercising all their rights and obligations under the transaction documents. This document cannot be reproduced except in full, without prior written approval of the Company. Any unauthorized alteration, forgery or falsification of the content or appearance of this document is unlawful and offenders may be prosecuted to the fullest extent of the law.

Test Report

No. : CE/2012/14846A Date : 2012/02/04 Page : 13 of 24

CERAMTEC GMBH

MULTIFUNCTIONAL CERAMICS LUITPOLDSTRASSE 15 D-91207 LAUF, GERMANY



Test Item(s)	Unit	Method	MDL	Result	Limit
				No.1	
HCFC-252 (CAS No.: 819-00-1)	mg/kg	With reference to US EPA 5021 method. Analysis was performed by GC/MS.	1	n.d.	-
HCFC-253 (CAS No.: 460-35-5)	mg/kg	With reference to US EPA 5021 method. Analysis was performed by GC/MS.	1	n.d.	-
HCFC-261 (CAS No.: 420-97-3)	mg/kg	With reference to US EPA 5021 method. Analysis was performed by GC/MS.	1	n.d.	-
HCFC-262 (CAS No.: 421-02-03)	mg/kg	With reference to US EPA 5021 method. Analysis was performed by GC/MS.	1	n.d.	-
HCFC-271 (CAS No.: 430-55-7)	mg/kg	With reference to US EPA 5021 method. Analysis was performed by GC/MS.	1	n.d.	-

Note :

1. mg/kg = ppm ; 0.1wt% = 1000ppm
2. n.d. = Not Detected
3. MDL = Method Detection Limit
4. " - " = Not Regulated
5. ** = Qualitative analysis (No Unit)
6. Negative = Undetectable / Positive = Detectable
7. Asbestos : Negative = "< 1.0 %", Positive = "> 1.0 %"

PFOS Reference Information : POPs - (EU) 757/2010

Outlawing PFOS as substances or preparations in concentrations above 0.001% (10ppm), in semi-finished products or articles or parts at a level above 0.1%(1000ppm), in textiles or other coated materials above 1µg/m².

Unless otherwise stated the results shown in this test report refer only to the sample(s) tested. This test report cannot be reproduced, except in full, without prior written permission of the Company. 除非另有說明，此報告結果僅對測試之樣品負責，本報告未經本公司書面許可，不得部分複製。
This document is issued by the Company subject to its General Conditions of Service printed overleaf, available on request or accessible at www.sgs.com/terms_and_conditions.htm and, for electronic format documents, subject to Terms and Conditions for Electronic Documents at www.sgs.com/en/Terms-and-Conditions/Terms-e-Document. Attention is drawn to the limitation of liability, indemnification and jurisdiction issues defined therein. Any holder of this document is advised that information contained hereon reflects the Company's findings at the time of its intervention only and within the limits of Client's instructions, if any. The Company's sole responsibility is to its Client and this document does not exonerate parties to a transaction from exercising all their rights and obligations under the transaction documents. This document cannot be reproduced except in full, without prior written approval of the Company. Any unauthorized alteration, forgery or falsification of the content or appearance of this document is unlawful and offenders may be prosecuted to the fullest extent of the law.

Test Report

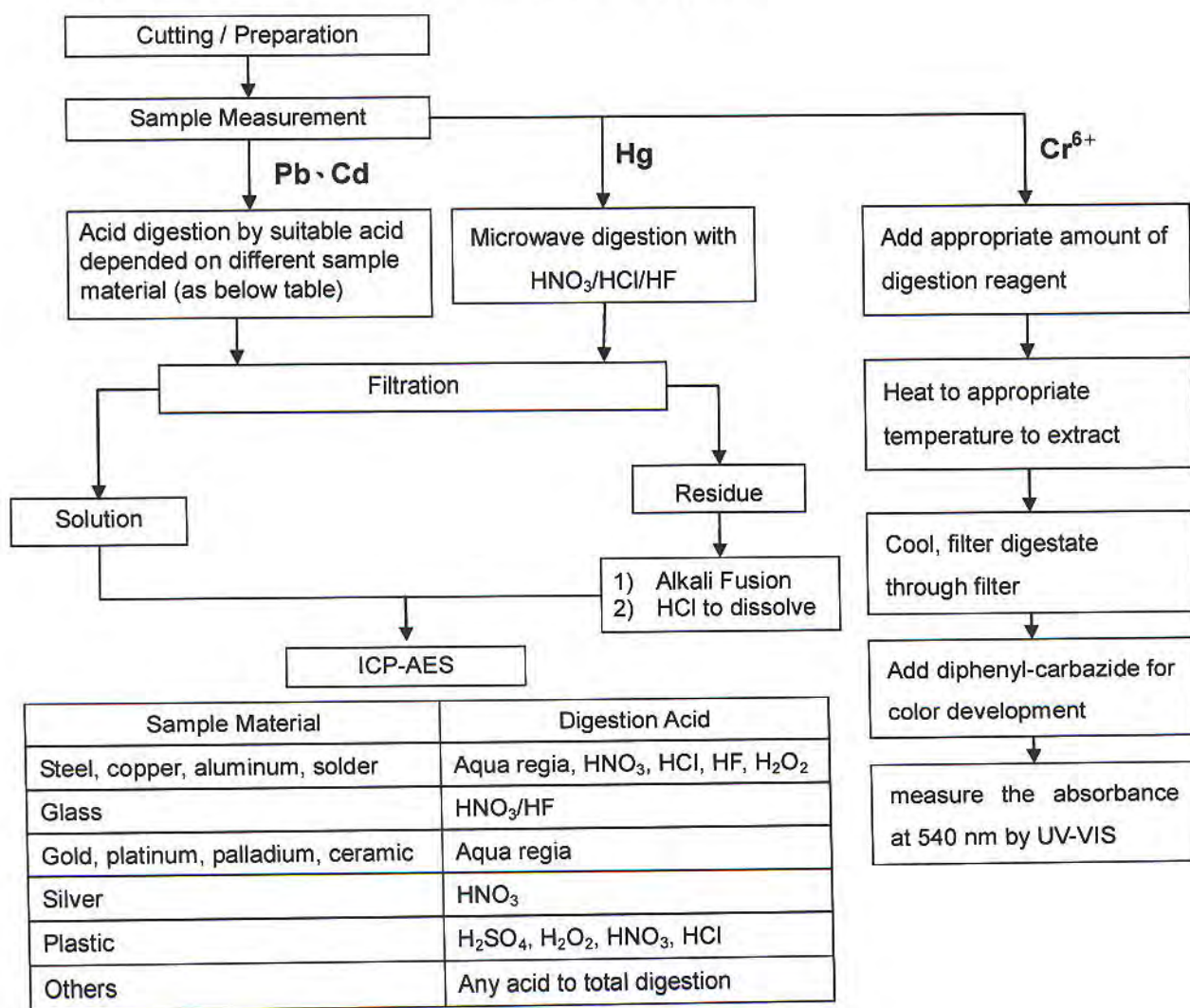
No. : CE/2012/14846A Date : 2012/02/04 Page : 14 of 24

CERAMTEC GMBH

MULTIFUNCTIONAL CERAMICS LUITPOLDSTRASSE 15 D-91207 LAUF, GERMANY



- 1) These samples were dissolved totally by pre-conditioning method according to below flow chart.
(Cr⁶⁺ test method excluded)
- 2) Name of the person who made measurement: Climbgreat Yang
- 3) Name of the person in charge of measurement: Troy Chang



Unless otherwise stated the results shown in this test report refer only to the sample(s) tested. This test report cannot be reproduced, except in full, without prior written permission of the Company. 除非另有說明，此報告結果僅對測試之樣品負責。本報告未經本公司書面許可，不可擅自複製。
This document is issued by the Company subject to its General Conditions of Service printed overleaf, available on request or accessible at www.sgs.com/terms_and_conditions.htm and, for electronic format documents, subject to Terms and Conditions for Electronic Documents at www.sgs.com/en/Terms-and-Conditions/Terms-e-Document. Attention is drawn to the limitation of liability, indemnification and jurisdiction issues defined therein. Any holder of this document is advised that information contained hereon reflects the Company's findings at the time of its intervention only and within the limits of Client's instructions, if any. The Company's sole responsibility is to its Client and this document does not exonerate parties to a transaction from exercising all their rights and obligations under the transaction documents. This document cannot be reproduced except in full, without prior written approval of the Company. Any unauthorized alteration, forgery or falsification of the content or appearance of this document is unlawful and offenders may be prosecuted to the fullest extent of the law.

Test Report

No. : CE/2012/14846A Date : 2012/02/04 Page : 15 of 24

CERAMTEC GMBH

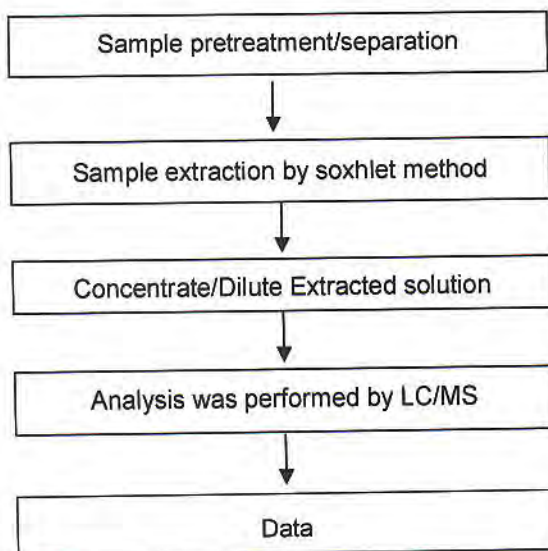
MULTIFUNCTIONAL CERAMICS LUITPOLDSTRASSE 15 D-91207 LAUF, GERMANY



Analytical flow chart of Soxhlet extraction (LC/MS) procedure

- Name of the person who made measurement: Roman Wong
- Name of the person in charge of measurement: Troy Chang

[Test Items: PFOS/PFOA 、 Benzotriazole]



Unless otherwise stated the results shown in this test report refer only to the sample(s) tested. This test report cannot be reproduced, except in full, without prior written permission of the Company. 除非另有說明，此報告結果僅對測試之樣品負責。本報告未經本公司書面許可，不得部分複製。
 This document is issued by the Company subject to its General Conditions of Service printed overleaf, available on request or accessible at www.sgs.com/terms_and_conditions.htm and, for electronic format documents, subject to Terms and Conditions for Electronic Documents at www.sgs.com/en/Terms-and-Conditions/Terms-e-Document. Attention is drawn to the limitation of liability, indemnification and jurisdiction issues defined therein. Any holder of this document is advised that information contained hereon reflects the Company's findings at the time of its intervention only and within the limits of Client's instructions, if any. The Company's sole responsibility is to its Client and this document does not exonerate parties to a transaction from exercising all their rights and obligations under the transaction documents. This document cannot be reproduced except in full, without prior written approval of the Company. Any unauthorized alteration, forgery or falsification of the content or appearance of this document is unlawful and offenders may be prosecuted to the fullest extent of the law.

Test Report

No. : CE/2012/14846A Date : 2012/02/04 Page : 16 of 24

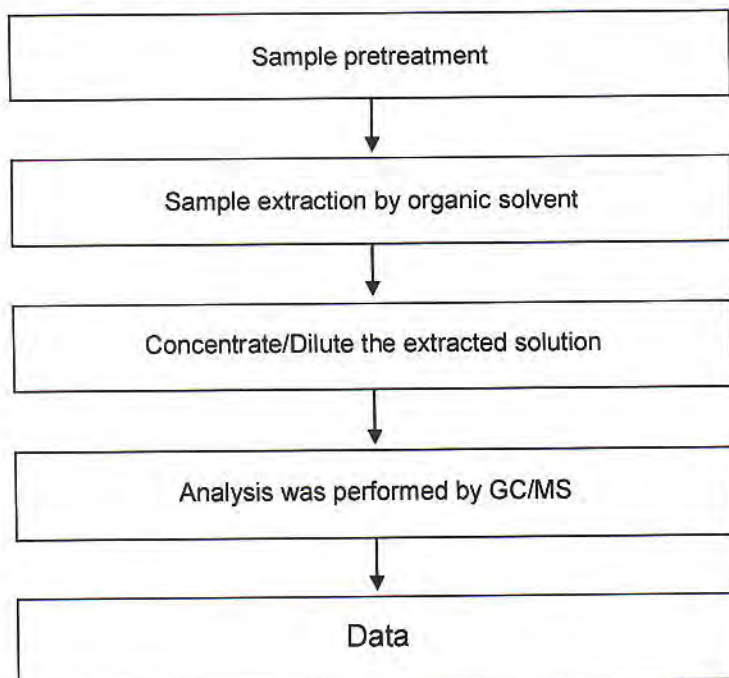
CERAMTEC GMBH

MULTIFUNCTIONAL CERAMICS LUITPOLDSTRASSE 15 D-91207 LAUF, GERMANY



Chlorinated Flame retardant analytical flow chart

- 1) Name of the person who made measurement: Barry Tseng
 - 2) Name of the person in charge of measurement: Troy Chang
- Reference method: US EPA 8270D, US EPA 3540
 - Test Items: PCBs, PCNs, PCTs, Mirex, CP, MCCC



Unless otherwise stated the results shown in this test report refer only to the sample(s) tested. This test report cannot be reproduced, except in full, without prior written permission of the Company. 除非另有說明，此報告結果僅對測試之樣品負責。本報告未經本公司書面許可，不得部分複製。
 This document is issued by the Company subject to its General Conditions of Service printed overleaf, available on request or accessible at www.sgs.com/terms_and_conditions.htm and, for electronic format documents, subject to Terms and Conditions for Electronic Documents at www.sgs.com/en/Terms-and-Conditions/Terms-e-Document. Attention is drawn to the limitation of liability, indemnification and jurisdiction issues defined therein. Any holder of this document is advised that information contained hereon reflects the Company's findings at the time of its intervention only and within the limits of Client's instructions, if any. The Company's sole responsibility is to its Client and this document does not exonerate parties to a transaction from exercising all their rights and obligations under the transaction documents. This document cannot be reproduced except in full, without prior written approval of the Company. Any unauthorized alteration, forgery or falsification of the content or appearance of this document is unlawful and offenders may be prosecuted to the fullest extent of the law.

Test Report

No. : CE/2012/14846A Date : 2012/02/04 Page : 17 of 24

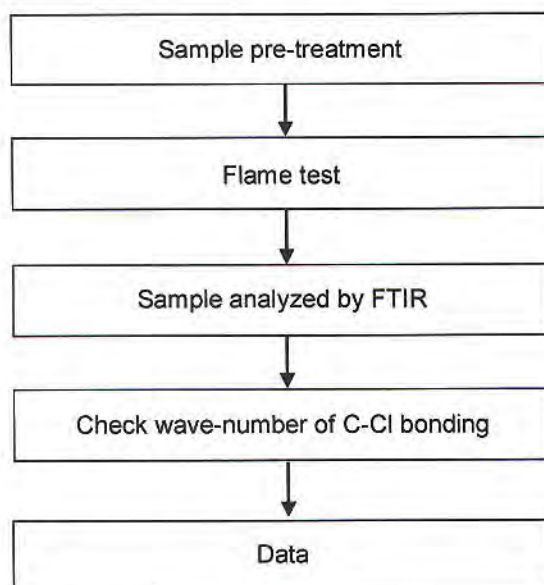
CERAMTEC GMBH

MULTIFUNCTIONAL CERAMICS LUITPOLDSTRASSE 15 D-91207 LAUF, GERMANY



Analysis flow chart for determination of PVC in material

- Name of the person who made measurement: Ginny Chen
- Name of the person in charge of measurement: Troy Chang



Unless otherwise stated the results shown in this test report refer only to the sample(s) tested. This test report cannot be reproduced, except in full, without prior written permission of the Company. 除非另有說明，此報告結果僅對測試之樣品負責。本報告未經本公司書面許可，不得部分複製。
This document is issued by the Company subject to its General Conditions of Service printed overleaf, available on request or accessible at www.sgs.com/terms_and_conditions.htm and, for electronic format documents, subject to Terms and Conditions for Electronic Documents at www.sgs.com/en/Terms-and-Conditions/Terms-e-Document. Attention is drawn to the limitation of liability, indemnification and jurisdiction issues defined therein. Any holder of this document is advised that information contained hereon reflects the Company's findings at the time of its intervention only and within the limits of Client's instructions, if any. The Company's sole responsibility is to its Client and this document does not exonerate parties to a transaction from exercising all their rights and obligations under the transaction documents. This document cannot be reproduced except in full, without prior written approval of the Company. Any unauthorized alteration, forgery or falsification of the content or appearance of this document is unlawful and offenders may be prosecuted to the fullest extent of the law.

Test Report

No. : CE/2012/14846A Date : 2012/02/04 Page : 18 of 24

CERAMTEC GMBH

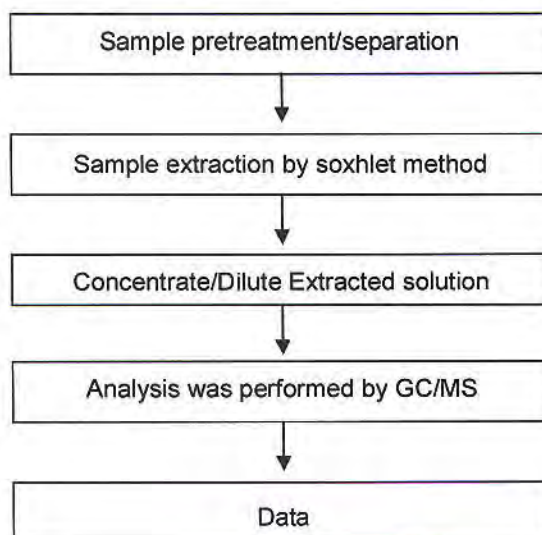
MULTIFUNCTIONAL CERAMICS LUITPOLDSTRASSE 15 D-91207 LAUF, GERMANY



Analytical flow chart of Soxhlet extraction (GC/MS) procedure

- Name of the person who made measurement: Roman Wong
- Name of the person in charge of measurement: Troy Chang

**【Test Items: Phthalate 、Benzotriazole 、HBCDD 、NP 、DBBT 、
Organic phosphorus compounds 】**



Unless otherwise stated the results shown in this test report refer only to the sample(s) tested. This test report cannot be reproduced, except in full, without prior written permission of the Company. 除非另有說明，此報告結果僅對測試之樣品負責。本報告未經本公司書面許可，不可部分複製。
This document is issued by the Company subject to its General Conditions of Service printed overleaf, available on request or accessible at www.sgs.com/terms_and_conditions.htm and, for electronic format documents, subject to Terms and Conditions for Electronic Documents at www.sgs.com/en/Terms-and-Conditions/Terms-e-Document. Attention is drawn to the limitation of liability, indemnification and jurisdiction issues defined therein. Any holder of this document is advised that information contained hereon reflects the Company's findings at the time of its intervention only and within the limits of Client's instructions, if any. The Company's sole responsibility is to its Client and this document does not exonerate parties to a transaction from exercising all their rights and obligations under the transaction documents. This document cannot be reproduced except in full, without prior written approval of the Company. Any unauthorized alteration, forgery or falsification of the content or appearance of this document is unlawful and offenders may be prosecuted to the fullest extent of the law.

Test Report

No. : CE/2012/14846A Date : 2012/02/04 Page : 19 of 24

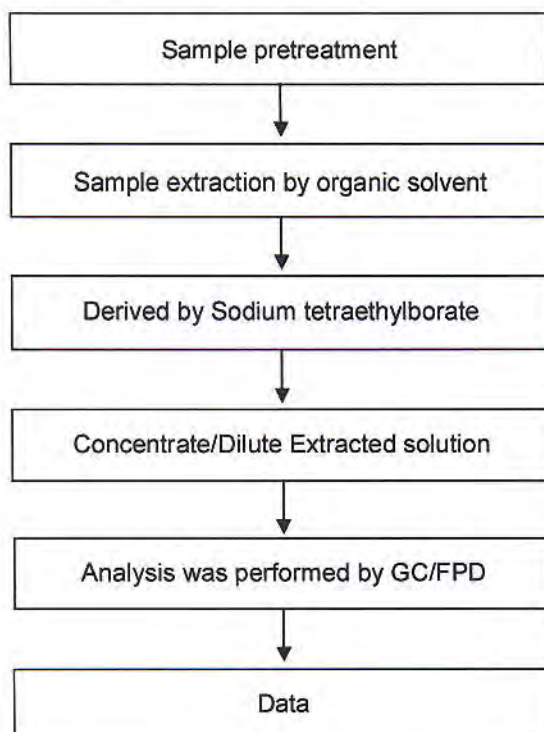
CERAMTEC GMBH

MULTIFUNCTIONAL CERAMICS LUITPOLDSTRASSE 15 D-91207 LAUF, GERMANY



Analytical flow chart of Organic-Tin content

- Name of the person who made measurement: Ginny Chen
- Name of the person in charge of measurement: Troy Chang



Unless otherwise stated the results shown in this test report refer only to the sample(s) tested. This test report cannot be reproduced, except in full, without prior written permission of the Company. 除非另有說明，此報告結果僅對測試之樣品負責。本報告未經本公司同意，不得部分複製。
 This document is issued by the Company subject to its General Conditions of Service printed overleaf, available on request or accessible at www.sgs.com/terms_and_conditions.htm and, for electronic format documents, subject to Terms and Conditions for Electronic Documents at www.sgs.com/en/Terms-and-Conditions/Terms-e-Document. Attention is drawn to the limitation of liability, indemnification and jurisdiction issues defined therein. Any holder of this document is advised that information contained hereon reflects the Company's findings at the time of its intervention only and within the limits of Client's instructions, if any. The Company's sole responsibility is to its Client and this document does not exonerate parties to a transaction from exercising all their rights and obligations under the transaction documents. This document cannot be reproduced except in full, without prior written approval of the Company. Any unauthorized alteration, forgery or falsification of the content or appearance of this document is unlawful and offenders may be prosecuted to the fullest extent of the law.

Test Report

No. : CE/2012/14846A Date : 2012/02/04 Page : 20 of 24

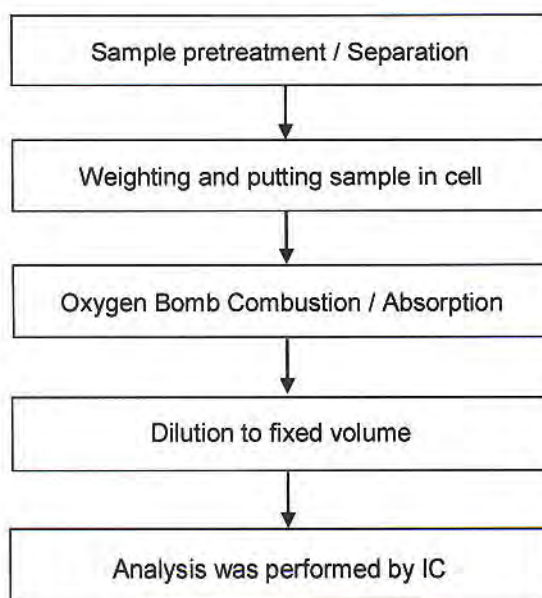
CERAMTEC GMBH

MULTIFUNCTIONAL CERAMICS LUITPOLDSTRASSE 15 D-91207 LAUF, GERMANY



Analytical flow chart of halogen content

- 1) Name of the person who made measurement: Rita Chen
- 2) Name of the person in charge of measurement: Troy Chang



Unless otherwise stated the results shown in this test report refer only to the sample(s) tested. This test report cannot be reproduced, except in full, without prior written permission of the Company. 除非另有說明，此報告結果僅對測試之樣品負責。本報告未經本公司書面許可，不得部分複製。
 This document is issued by the Company subject to its General Conditions of Service printed overleaf, available on request or accessible at www.sgs.com/terms_and_conditions.htm and, for electronic format documents, subject to Terms and Conditions for Electronic Documents at www.sgs.com/en/Terms-and-Conditions/Terms-e-Document. Attention is drawn to the limitation of liability, indemnification and jurisdiction issues defined therein. Any holder of this document is advised that information contained hereon reflects the Company's findings at the time of its intervention only and within the limits of Client's instructions, if any. The Company's sole responsibility is to its Client and this document does not exonerate parties to a transaction from exercising all their rights and obligations under the transaction documents. This document cannot be reproduced except in full, without prior written approval of the Company. Any unauthorized alteration, forgery or falsification of the content or appearance of this document is unlawful and offenders may be prosecuted to the fullest extent of the law.

Test Report

No. : CE/2012/14846A Date : 2012/02/04 Page : 21 of 24

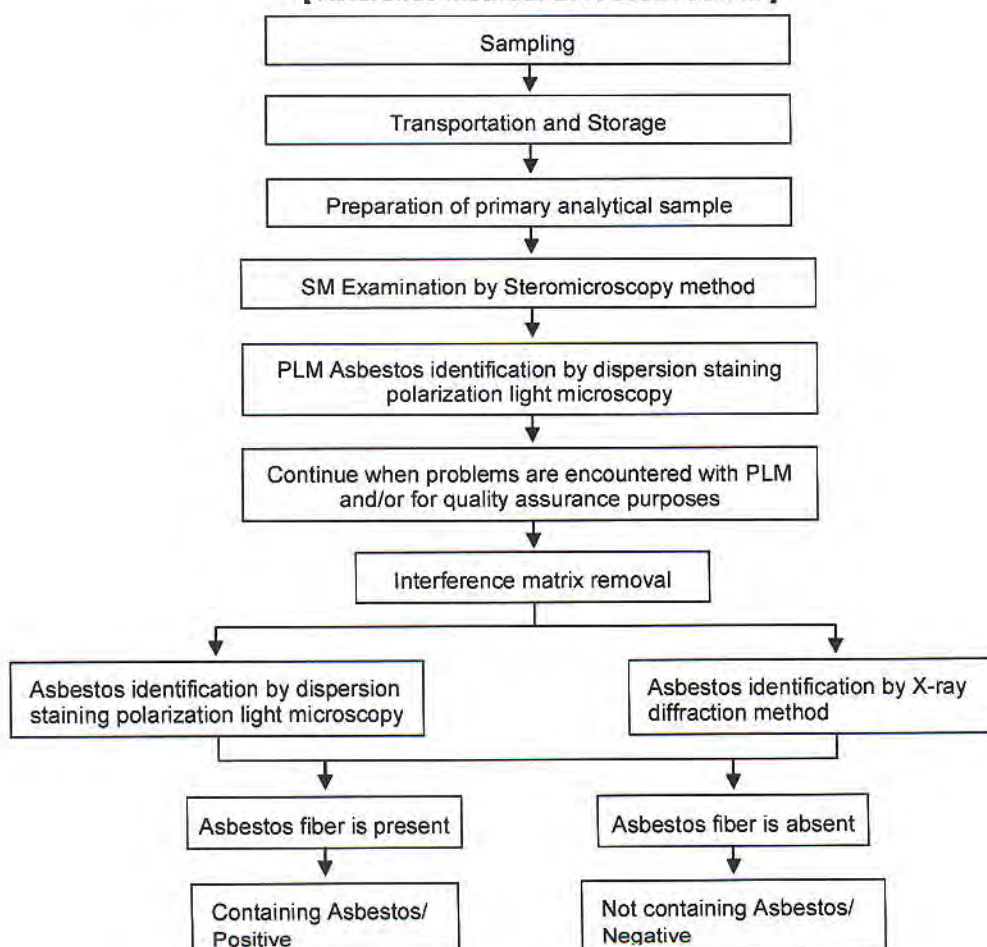
CERAMTEC GMBH

MULTIFUNCTIONAL CERAMICS LUITPOLDSTRASSE 15 D-91207 LAUF, GERMANY



Analysis flow chart for determination of Asbestos

- 1) Name of the person who made measurement: Victor Kao
 - 2) Name of the person in charge of measurement: Wendy Wei
- [Reference method: EPA 600/R-93/116]**



Unless otherwise stated the results shown in this test report refer only to the sample(s) tested. This test report cannot be reproduced, except in full, without prior written permission of the Company. 除非另有說明，此報告結果僅針對測試之樣品負責。未經本公司書面許可，不得部分複製。
 This document is issued by the Company subject to its General Conditions of Service printed overleaf, available on request or accessible at www.sgs.com/terms_and_conditions.htm and, for electronic format documents, subject to Terms and Conditions for Electronic Documents at www.sgs.com/en/Terms-and-Conditions/Terms-e-Document. Attention is drawn to the limitation of liability, indemnification and jurisdiction issues defined therein. Any holder of this document is advised that information contained hereon reflects the Company's findings at the time of its intervention only and within the limits of Client's instructions, if any. The Company's sole responsibility is to its Client and this document does not exonerate parties to a transaction from exercising all their rights and obligations under the transaction documents. This document cannot be reproduced except in full, without prior written approval of the Company. Any unauthorized alteration, forgery or falsification of the content or appearance of this document is unlawful and offenders may be prosecuted to the fullest extent of the law.

Test Report

No. : CE/2012/14846A Date : 2012/02/04 Page : 22 of 24

CERAMTEC GMBH

MULTIFUNCTIONAL CERAMICS LUITPOLDSTRASSE 15 D-91207 LAUF, GERMANY

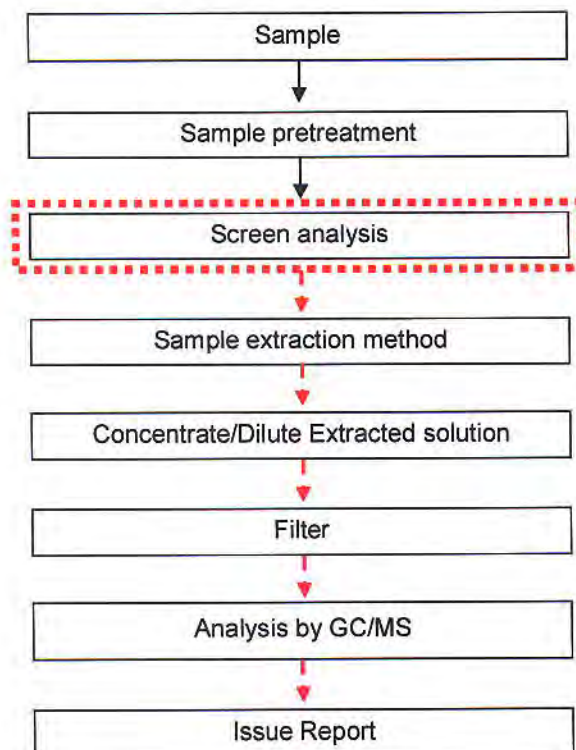


Analytical flow chart

- Name of the person who made measurement: Roman Wong
- Name of the person in charge of measurement: Troy Chang

【 Test Items: PBB/PBDE, TBBP-A-bis 】

First testing process —> Optional screen process Confirmation process - ->



Unless otherwise stated the results shown in this test report refer only to the sample(s) tested. This test report cannot be reproduced, except in full, without prior written permission of the Company. 除非另有說明，此報告結果僅對測試之樣品負責。本報告只供本公司客戶使用，不可部分複製。
This document is issued by the Company subject to its General Conditions of Service printed overleaf, available on request or accessible at www.sgs.com/terms_and_conditions.htm and, for electronic format documents, subject to Terms and Conditions for Electronic Documents at www.sgs.com/en/Terms-and-Conditions/Terms-e-Document. Attention is drawn to the limitation of liability, indemnification and jurisdiction issues defined therein. Any holder of this document is advised that information contained hereon reflects the Company's findings at the time of its intervention only and within the limits of Client's instructions, if any. The Company's sole responsibility is to its Client and this document does not exonerate parties to a transaction from exercising all their rights and obligations under the transaction documents. This document cannot be reproduced except in full, without prior written approval of the Company. Any unauthorized alteration, forgery or falsification of the content or appearance of this document is unlawful and offenders may be prosecuted to the fullest extent of the law.

Test Report

No. : CE/2012/14846A Date : 2012/02/04 Page : 23 of 24

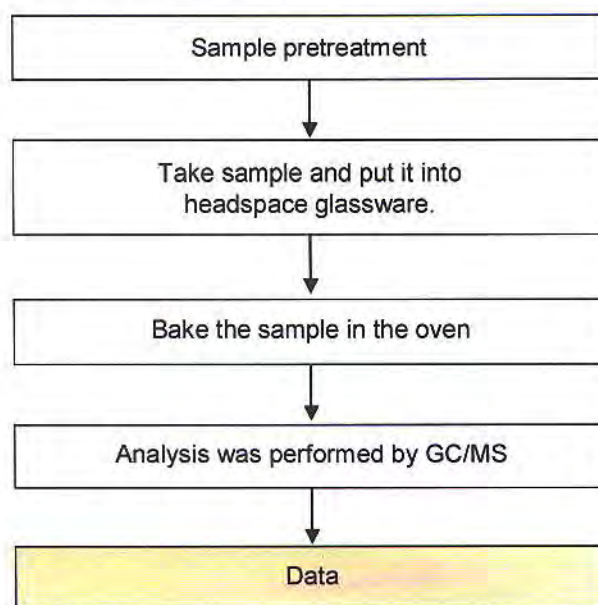
CERAMTEC GMBH

MULTIFUNCTIONAL CERAMICS LUITPOLDSTRASSE 15 D-91207 LAUF, GERMANY



Analytical flow chart of volatile organic compounds (VOCs)

- Name of the person who made measurement : Chun Wu
 - Name of the person in charge of measurement : Shinjyh Chen
- 【Reference method : US EPA 5021】



Unless otherwise stated the results shown in this test report refer only to the sample(s) tested. This test report cannot be reproduced, except in full, without prior written permission of the Company. 除非另有說明，此報告結果僅對測試之樣品負責。本報告未經本公司同意，不得部分複製。

This document is issued by the Company subject to its General Conditions of Service printed overleaf, available on request or accessible at www.sgs.com/terms_and_conditions.htm and, for electronic format documents, subject to Terms and Conditions for Electronic Documents at www.sgs.com/en/Terms-and-Conditions/Terms-e-Document. Attention is drawn to the limitation of liability, indemnification and jurisdiction issues defined therein. Any holder of this document is advised that information contained hereon reflects the Company's findings at the time of its intervention only and within the limits of Client's instructions, if any. The Company's sole responsibility is to its Client and this document does not exonerate parties to a transaction from exercising all their rights and obligations under the transaction documents. This document cannot be reproduced except in full, without prior written approval of the Company. Any unauthorized alteration, forgery or falsification of the content or appearance of this document is unlawful and offenders may be prosecuted to the fullest extent of the law.

Test Report

No. : CE/2012/14846A Date : 2012/02/04 Page : 24 of 24

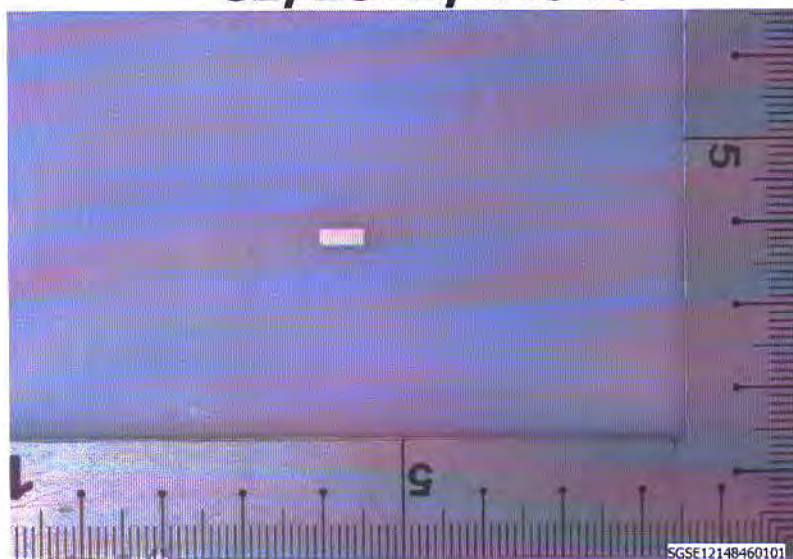
CERAMTEC GMBH

MULTIFUNCTIONAL CERAMICS LUITPOLDSTRASSE 15 D-91207 LAUF, GERMANY



* The tested sample / part is marked by an arrow if it's shown on the photo. *

CE/2012/14846



** End of Report **

Unless otherwise stated the results shown in this test report refer only to the sample(s) tested. This test report cannot be reproduced, except in full, without prior written permission of the Company. 除非另有說明，此報告結果僅對測試之樣品負責。本報告未經本公司同意，不得部分複製。
This document is issued by the Company subject to its General Conditions of Service printed overleaf, available on request or accessible at www.sgs.com/terms_and_conditions.htm and, for electronic format documents, subject to Terms and Conditions for Electronic Documents at www.sgs.com/en/Terms-and-Conditions/Terms-e-Document. Attention is drawn to the limitation of liability, indemnification and jurisdiction issues defined therein. Any holder of this document is advised that information contained hereon reflects the Company's findings at the time of its intervention only and within the limits of Client's instructions, if any. The Company's sole responsibility is to its Client and this document does not exonerate parties to a transaction from exercising all their rights and obligations under the transaction documents. This document cannot be reproduced except in full, without prior written approval of the Company. Any unauthorized alteration, forgery or falsification of the content or appearance of this document is unlawful and offenders may be prosecuted to the fullest extent of the law.



Test Report

Number : TWNC00249178

Applicant: Littelfuse Philippines Inc.
LIMA Technology Center, Lipa City,
Malvar, Batangas

Date : Mar 26, 2012

Sample Description:

One (1) group of submitted samples said to be :
Part Description : Silver Clad Cu Wire with 2% Ag
Part Number : 082xxx(082684)
Date Sample Received : Mar 22, 2012
Date Test Started : Mar 22, 2012

Test Conducted :

As requested by the applicant, for details please refer to attached pages.

Authorized By:
On Behalf Of Intertek Testing Services
Taiwan Limited



K. Y. Liang
Director

This report shall not be reproduced
except in full, without the written
approval of the laboratory.

Number : TWNC00249178

Test Conducted

(I) Test Result Summary :

<u>Test Item</u>	<u>Result (ppm)</u>
	<u>Silvery Wire</u>
Heavy Metal	
Cadmium (Cd) content	ND
Lead (Pb) content	ND
Mercury (Hg) content	ND
Chromium VI (Cr ⁶⁺) content (mg/kg with 50cm ²)	Negative (< 0.02)

Remarks: ppm = Parts per million based on weight of tested sample = mg/kg
 ND = Not detected
 < = Less than
 mg/kg with 50cm² = milligram per kilogram with 50 square centimetre

Responsibility of Chemist : Irene Chiou / Kevin Liu / Cathy Chen

Date Sample Received : Mar 22, 2012

Test Period : Mar 22, 2012 To Mar 26, 2012

(II) RoHS Requirement:

<u>Restricted Substances</u>	<u>Limits</u>
Cadmium (Cd) Content	0.01% (100ppm)
Lead (Pb) Content	0.1% (1000ppm)
Mercury (Hg) Content	0.1% (1000ppm)
Chromium VI (Cr ⁶⁺) Content	0.1% (1000ppm)

The above limits were quoted from 2002/95/EC and amendment 2005/618/EC for homogeneous material.

Test Conducted

(III) Test Method:

<u>Test Item</u>	<u>Test Method</u>	<u>Reporting Limit</u>
Cadmium (Cd) content	With reference to IEC 62321 edition 1.0:2008 in clause 8/9/10, by microwave digestion until the tested samples are totally dissolved and determined by ICP-OES.	2 ppm
Lead (Pb) content	With reference to IEC 62321 edition 1.0:2008 in clause 8/9/10, by microwave digestion until the tested samples are totally dissolved and determined by ICP-OES.	2 ppm
Mercury (Hg) content	With reference to IEC 62321 edition 1.0:2008 in clause 7, by microwave digestion until the tested samples are totally dissolved and determined by ICP-OES.	2 ppm
Chromium VI (Cr ⁶⁺) content	With reference to IEC 62321 edition 1.0:2008 in annex B, by boiling water extraction and determined by UV-Vis Spectrophotometer.	0.02 mg/kg with 50cm ²

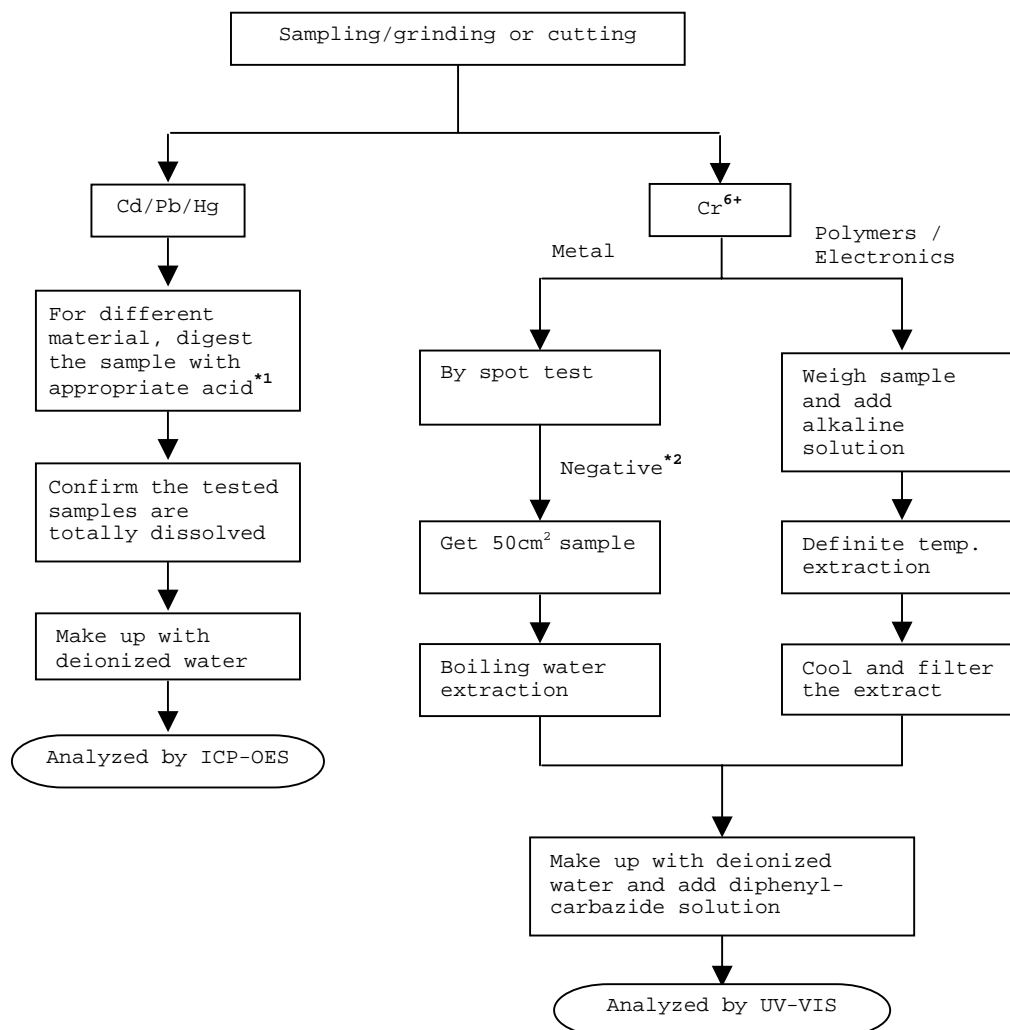
Remark: Reporting limit = Quantitation limit of analyte in sample

Test Conducted

(IV) Measurement Flowchart:

Test For Cd/Pb/Hg/Chromium (VI)

Reference Standard : IEC 62321 edition 1.0:2008



Remarks:

*1: List Of Appropriate Acid :

Material	Acid Added For Digestion
Polymers	HNO ₃ , HCl, HF, H ₂ O ₂ , H ₃ BO ₃
Metals	HNO ₃ , HCl, HF
Electronics	HNO ₃ , HCl, H ₂ O ₂ , HBF ₄

*2: If the result of spot test is positive, Chromium VI would be determined as detected.

End of Report

Number : TWNC00249178

Test Conducted

Photo





Test Report

Number : TWNC00249177

Applicant: Littelfuse Philippines Inc.
LIMA Technology Center, Lipa City,
Malvar, Batangas

Date : Mar 26, 2012

Sample Description:

One (1) group of submitted samples said to be :

Part Description : Silver Clad Cu Wire with 5% Ag

Part Number : 082xxx(082375)

Date Sample Received : Mar 22, 2012

Date Test Started : Mar 22, 2012

Test Conducted :

As requested by the applicant, for details please refer to attached pages.

Authorized By:

On Behalf Of Intertek Testing Services
Taiwan Limited



K. Y. Liang
Director

This report shall not be reproduced
except in full, without the written
approval of the laboratory.

Number : TWNC00249177

Test Conducted

(I) Test Result Summary :

<u>Test Item</u>	<u>Result (ppm)</u>
	<u>Silvery Wire</u>
Heavy Metal	
Cadmium (Cd) content	ND
Lead (Pb) content	ND
Mercury (Hg) content	ND
Chromium VI (Cr ⁶⁺) content (mg/kg with 50cm ²)	Negative (< 0.02)

Remarks: ppm = Parts per million based on weight of tested sample = mg/kg
 ND = Not detected
 < = Less than
 mg/kg with 50cm² = milligram per kilogram with 50 square centimetre

Responsibility of Chemist : Irene Chiou / Kevin Liu / Cathy Chen

Date Sample Received : Mar 22, 2012

Test Period : Mar 22, 2012 To Mar 26, 2012

(II) RoHS Requirement:

<u>Restricted Substances</u>	<u>Limits</u>
Cadmium (Cd) Content	0.01% (100ppm)
Lead (Pb) Content	0.1% (1000ppm)
Mercury (Hg) Content	0.1% (1000ppm)
Chromium VI (Cr ⁶⁺) Content	0.1% (1000ppm)

The above limits were quoted from 2002/95/EC and amendment 2005/618/EC for homogeneous material.

Test Conducted

(III) Test Method:

<u>Test Item</u>	<u>Test Method</u>	<u>Reporting Limit</u>
Cadmium (Cd) content	With reference to IEC 62321 edition 1.0:2008 in clause 8/9/10, by microwave digestion until the tested samples are totally dissolved and determined by ICP-OES.	2 ppm
Lead (Pb) content	With reference to IEC 62321 edition 1.0:2008 in clause 8/9/10, by microwave digestion until the tested samples are totally dissolved and determined by ICP-OES.	2 ppm
Mercury (Hg) content	With reference to IEC 62321 edition 1.0:2008 in clause 7, by microwave digestion until the tested samples are totally dissolved and determined by ICP-OES.	2 ppm
Chromium VI (Cr^{6+}) content	With reference to IEC 62321 edition 1.0:2008 in annex B, by boiling water extraction and determined by UV-Vis Spectrophotometer.	0.02 mg/kg with 50cm ²

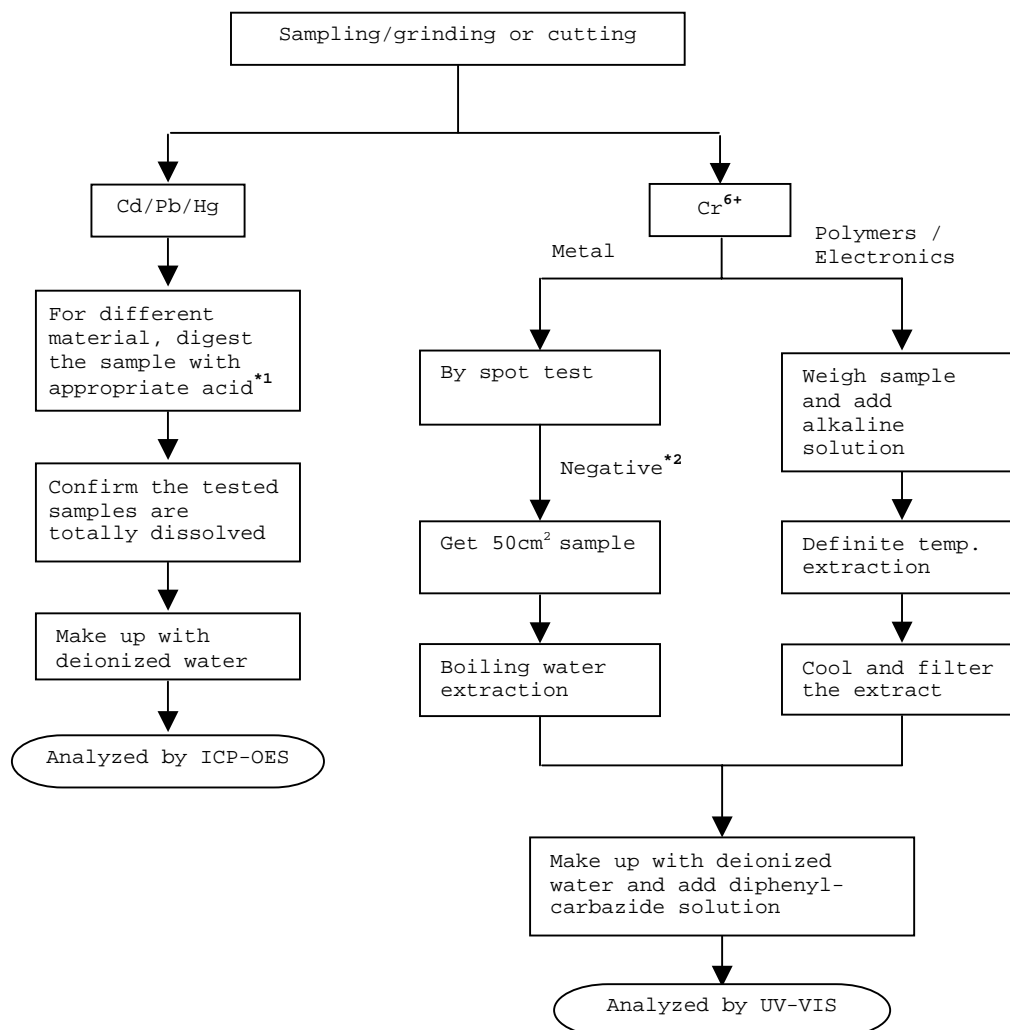
Remark: Reporting limit = Quantitation limit of analyte in sample

Test Conducted

(IV) Measurement Flowchart:

Test For Cd/Pb/Hg/Chromium (VI)

Reference Standard : IEC 62321 edition 1.0:2008



Remarks:

*1: List Of Appropriate Acid :

Material	Acid Added For Digestion
Polymers	HNO ₃ , HCl, HF, H ₂ O ₂ , H ₃ BO ₃
Metals	HNO ₃ , HCl, HF
Electronics	HNO ₃ , HCl, H ₂ O ₂ , HBF ₄

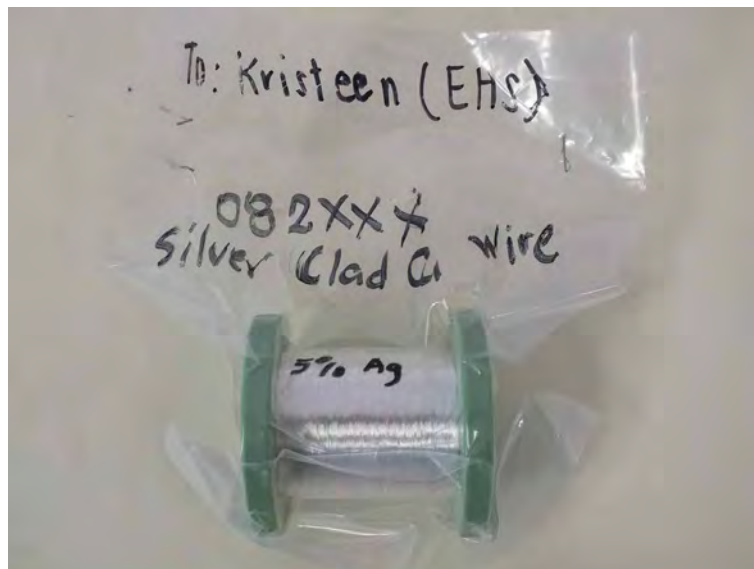
*2: If the result of spot test is positive, Chromium VI would be determined as detected.

End of Report

Number : TWNC00249177

Test Conducted

Photo



Polyfil AG
Gina Gregorio
Oberallmendstrasse 20A

6300 Zug / Switzerland

Fürth, 2012-12-19

Test report No. FUHL1236935

Testing of a material sample according to the RoHS directive 2011/65/EC

Sample description: Ni36Fe64MAg wire; part no. 962464; batch 497255Rev.B

Arrival in lab: 2012-012-04; Period of XRF analysis incl. sample preparation and photo documentation: 2012-12-07 – 2012-12-10
Head of Inorganic Lab: Claudia List

Copying this test report is permitted only in agreement with the contracted lab. The test results refer only to the tested item.
This report consists of 6 page(s).
The test methods signed with * are not listed in the attachment of the accreditation certificate.

Conclusion based on tested item

Test order	Status
testing according to the RoHS directive 2011/65/EC	conform [°]

[°] Please see overview of test results

- Test results see next pages -

Sample description: Ni36Fe64MAg wire; part no. 962464; batch 497255Rev.B

nM = non Metal

M = Metal

cM = composite Material

List of component parts:

Sample No.	Part No.	Material	Description
236935	1	M	Ni36Fe64MAg wire; part no. 962464; batch 497255Rev.B

Sample description: Ni36Fe64MAg wire; part no. 962464; batch 497255Rev.B

Comment

LOD = Limit of Detection
 BL = Below Limit
 OL = Over Limit
 X = Inconclusive, further test necessary
 σ = Standard deviation

 CS = Composite sample

Remark:

Results were obtained by EDXRF for primary screening. Additional chemical testing using ICP (for Cd, Pb), AAS (for Hg), IC-UC/VIS (for CrVI) and GC/MS (for PBBs/PBDEs) are recommended, if the concentration exceeds the below warning value according to IEC 62321.

Element	Unit	non - metal	metal
Cd	mg / kg	$BL \leq (70-3\sigma) < X < (130+3\sigma) \leq OL$	$BL \leq (70-3\sigma) < X < (130+3\sigma) \leq OL$
Pb	mg / kg	$BL \leq (700-3\sigma) < X < (1300+3\sigma) \leq OL$	$BL \leq (700-3\sigma) < X < (1300+3\sigma) \leq OL$
Hg	mg / kg	$BL \leq (700-3\sigma) < X < (1300+3\sigma) \leq OL$	$BL \leq (700-3\sigma) < X < (1300+3\sigma) \leq OL$
Br	mg / kg	$BL \leq (300-3\sigma) < X$	--
Cr	mg / kg	$BL \leq (700-3\sigma) < X$	$BL \leq (700-3\sigma) < X$

Element	Unit	composite material
Cd	mg / kg	$LOD < X < (150+3\sigma) \leq OL$
Pb	mg / kg	$BL \leq (500-3\sigma) < X < (1500+3\sigma) \leq OL$
Hg	mg / kg	$BL \leq (500-3\sigma) < X < (1500+3\sigma) \leq OL$
Br	mg / kg	$BL \leq (250-3\sigma) < X$
Cr	mg / kg	$BL \leq (500-3\sigma) < X$

Sample description: Ni36Fe64MAg wire; part no. 962464; batch 497255Rev.B

1. XRF screening

Method: XRF according to IEC 62321:2008*

Sample No.	Part No.	Pb	Hg	Cd	Cr _{total}	Br	Status
236935	1	BL	BL	BL	BL	--	conform

Comment:

Elements	RoHS-limit value
Lead (Pb)	1000 mg/kg
Mercury (Hg)	1000 mg/kg
Cadmium (Cd)	100 mg/kg
Chromium VI (Cr VI)	1000 mg/kg
Polybrominated Biphenyle (PBBs)	1000 mg/kg
Polybrominated Diphenyl ether (PBDEs)	1000 mg/kg

Intertek Consumer Goods GmbH

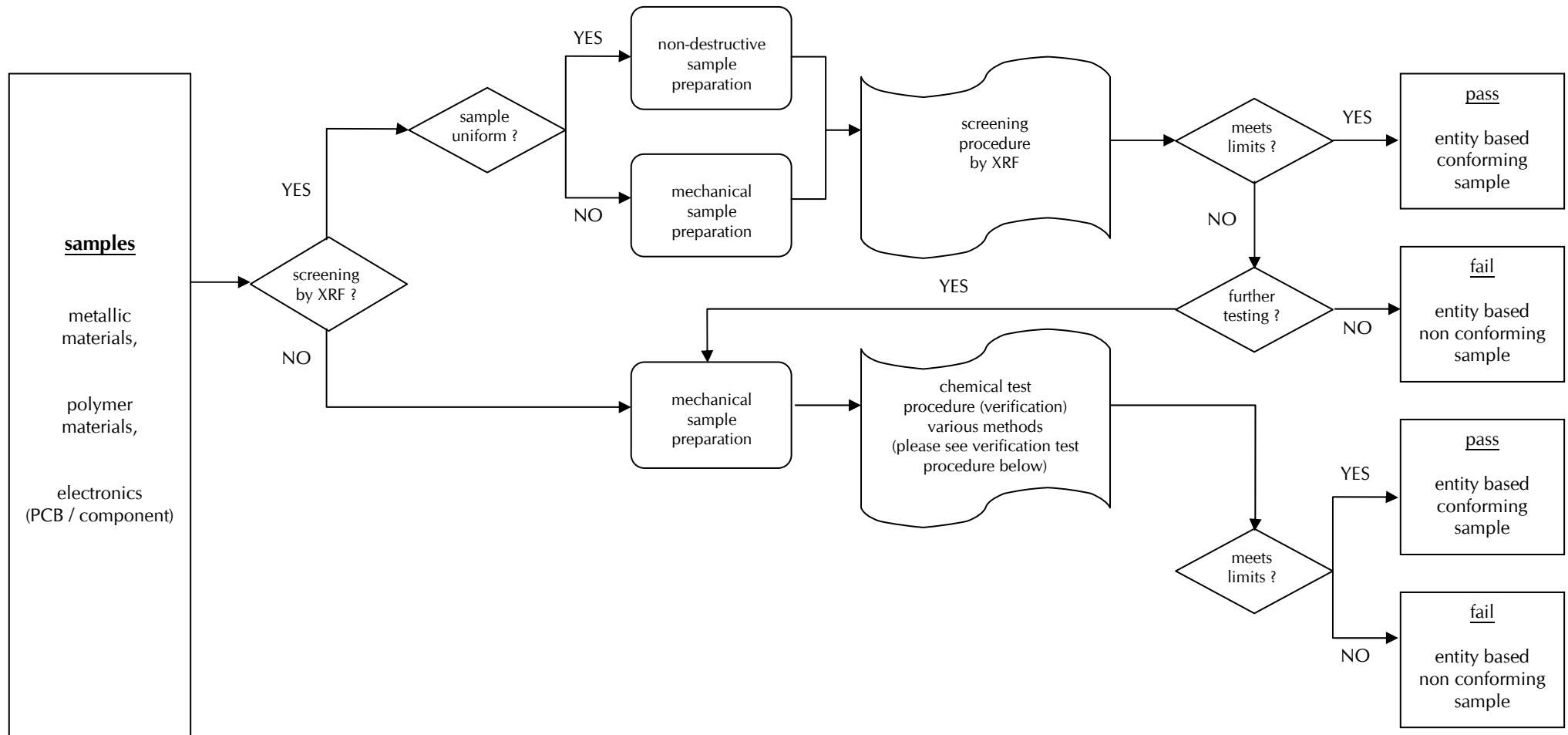


Prüfleitung / Lab Manager

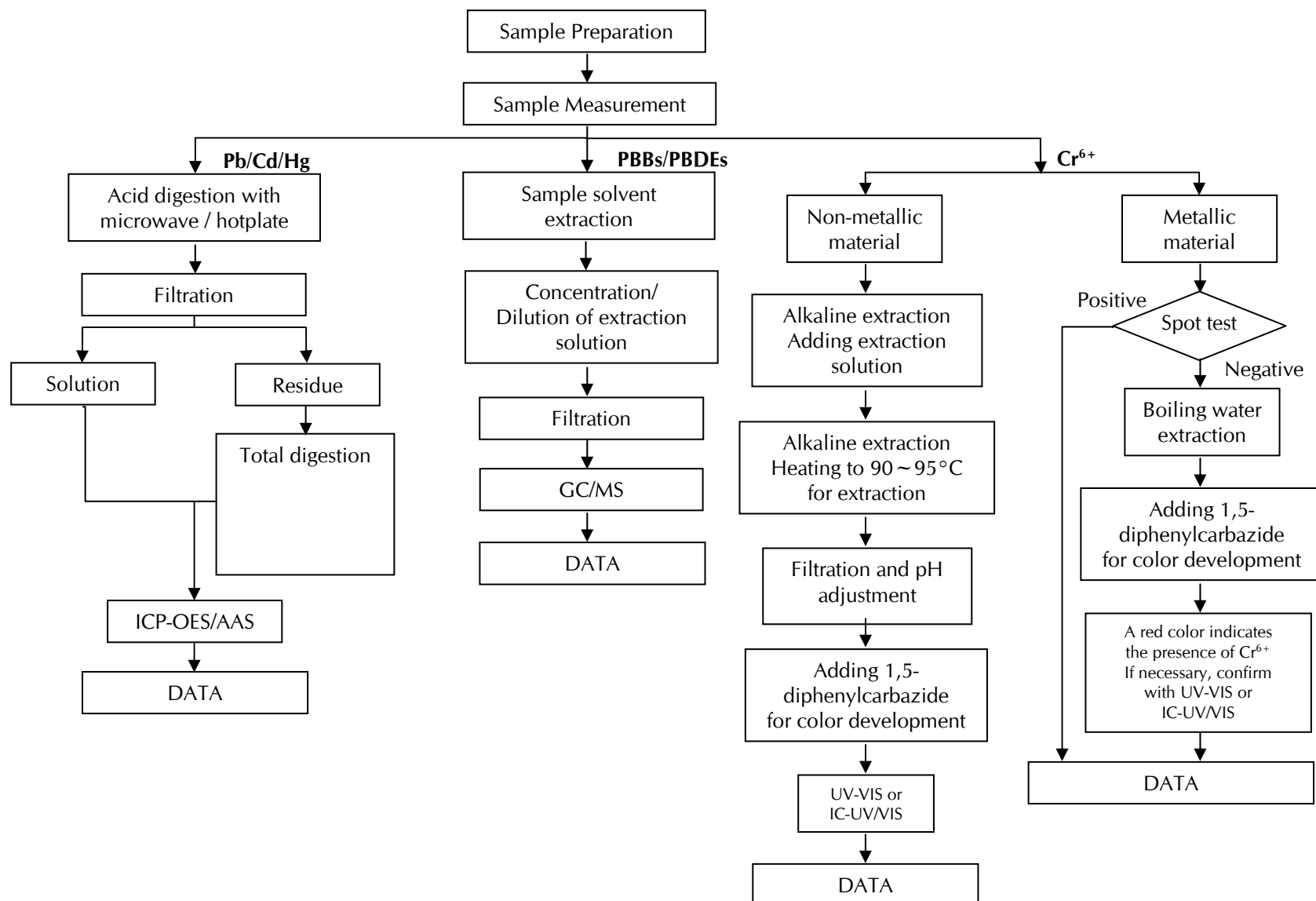
☐ A. Breunig, ☐ K. Grönhardt, ☐ Dr. K. Laue-Schuler, ☒ C. List, ☐ D. Löw
☐ R. Micolay, ☐ M. Neumeister, ☐ Dr. R. Rätze, ☐ K. Scharrer, ☐ M. Tutsch

- Flow charts see next page(s) -

Test procedure



Verification test procedure





Intertek Consumer Goods GmbH · Würzburger Straße 152 · 90766 Fürth ·

Polyfil AG
Gina Gregorio
Oberallmendstrasse 20A

6300 Zug / Switzerland

Fürth, 2012-12-19

Test report No. FUHL1236937

Testing of a material sample according to the RoHS directive 2011/65/EC

Sample description: Ni42Fe58MCuMAg wire; part no. HL26351

Arrival in lab: 2012-012-04; Period of XRF analysis incl. sample preparation and photo documentation: 2012-12-07 – 2012-12-10
Head of Inorganic Lab: Claudia List

Copying this test report is permitted only in agreement with the contracted lab. The test results refer only to the tested item.
This report consists of 6 page(s).
The test methods signed with * are not listed in the attachment of the accreditation certificate.

Conclusion based on tested item

Test order	Status
testing according to the RoHS directive 2011/65/EC	conform [°]

[°] Please see overview of test results

- Test results see next pages -

Sample description: Ni42Fe58MCuMAg wire; part no. HL26351

nM = non Metal

M = Metal

cM = composite Material

List of component parts:

Sample No.	Part No.	Material	Description
236937	1	M	Ni42Fe58MCuMAg wire; part no. HL26351

Sample description: Ni42Fe58MCuMAg wire; part no. HL26351

Comment

LOD = Limit of Detection
 BL = Below Limit
 OL = Over Limit
 X = Inconclusive, further test necessary
 σ = Standard deviation

 CS = Composite sample

Remark:

Results were obtained by EDXRF for primary screening. Additional chemical testing using ICP (for Cd, Pb), AAS (for Hg), IC-UC/VIS (for CrVI) and GC/MS (for PBBs/PBDEs) are recommended, if the concentration exceeds the below warning value according to IEC 62321.

Element	Unit	non - metal	metal
Cd	mg / kg	$BL \leq (70-3\sigma) < X < (130+3\sigma) \leq OL$	$BL \leq (70-3\sigma) < X < (130+3\sigma) \leq OL$
Pb	mg / kg	$BL \leq (700-3\sigma) < X < (1300+3\sigma) \leq OL$	$BL \leq (700-3\sigma) < X < (1300+3\sigma) \leq OL$
Hg	mg / kg	$BL \leq (700-3\sigma) < X < (1300+3\sigma) \leq OL$	$BL \leq (700-3\sigma) < X < (1300+3\sigma) \leq OL$
Br	mg / kg	$BL \leq (300-3\sigma) < X$	--
Cr	mg / kg	$BL \leq (700-3\sigma) < X$	$BL \leq (700-3\sigma) < X$

Element	Unit	composite material
Cd	mg / kg	$LOD < X < (150+3\sigma) \leq OL$
Pb	mg / kg	$BL \leq (500-3\sigma) < X < (1500+3\sigma) \leq OL$
Hg	mg / kg	$BL \leq (500-3\sigma) < X < (1500+3\sigma) \leq OL$
Br	mg / kg	$BL \leq (250-3\sigma) < X$
Cr	mg / kg	$BL \leq (500-3\sigma) < X$

Sample description: Ni42Fe58MCuMAg wire; part no. HL26351

1. XRF screening

Method: XRF according to IEC 62321:2008*

Sample No.	Part No.	Pb	Hg	Cd	Cr _{total}	Br	Status
236937	1	BL	BL	BL	BL	--	conform

Comment:

Elements	RoHS-limit value
Lead (Pb)	1000 mg/kg
Mercury (Hg)	1000 mg/kg
Cadmium (Cd)	100 mg/kg
Chromium VI (Cr VI)	1000 mg/kg
Polybrominated Biphenyle (PBBs)	1000 mg/kg
Polybrominated Diphenyl ether (PBDEs)	1000 mg/kg

Intertek Consumer Goods GmbH

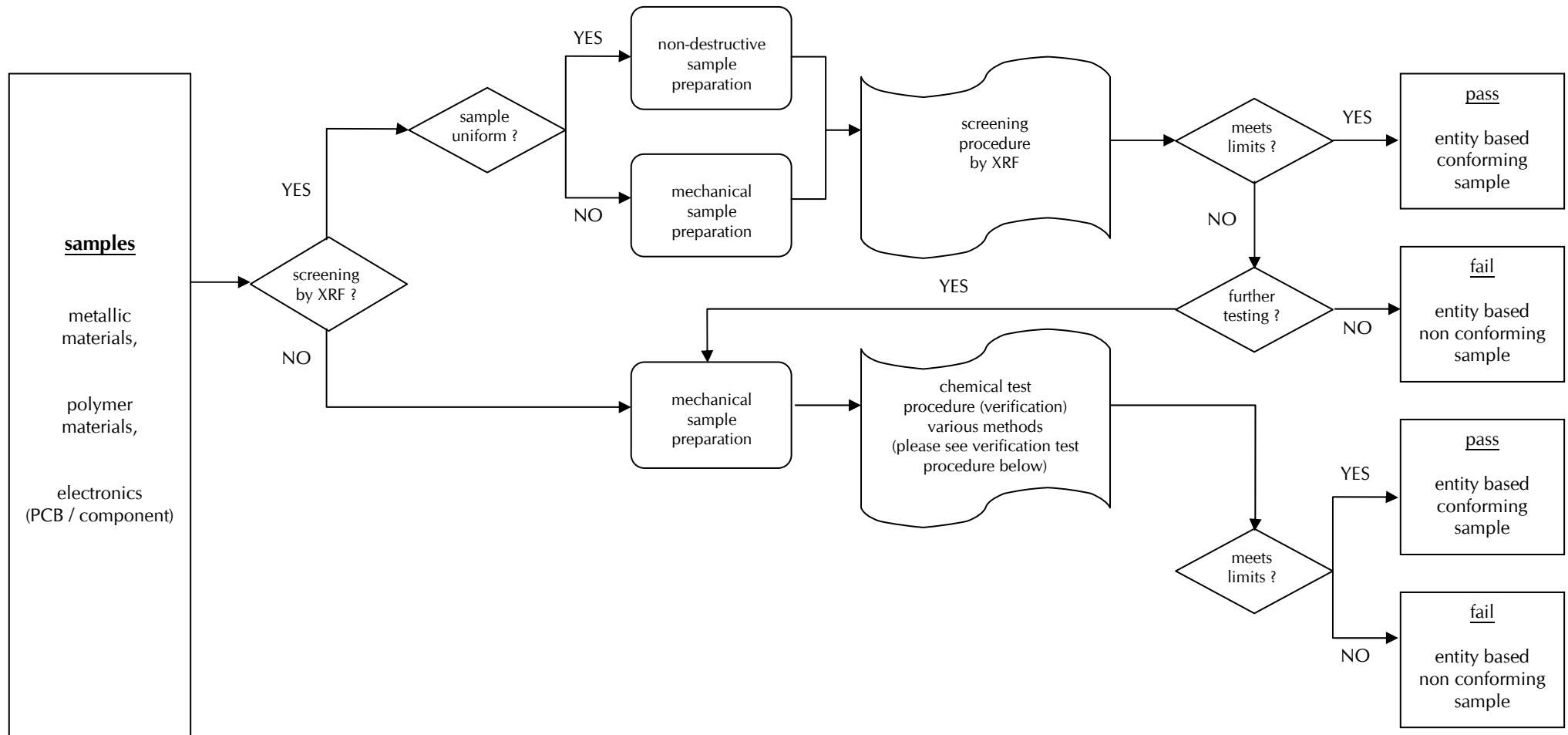


Prüfleitung / Lab Manager

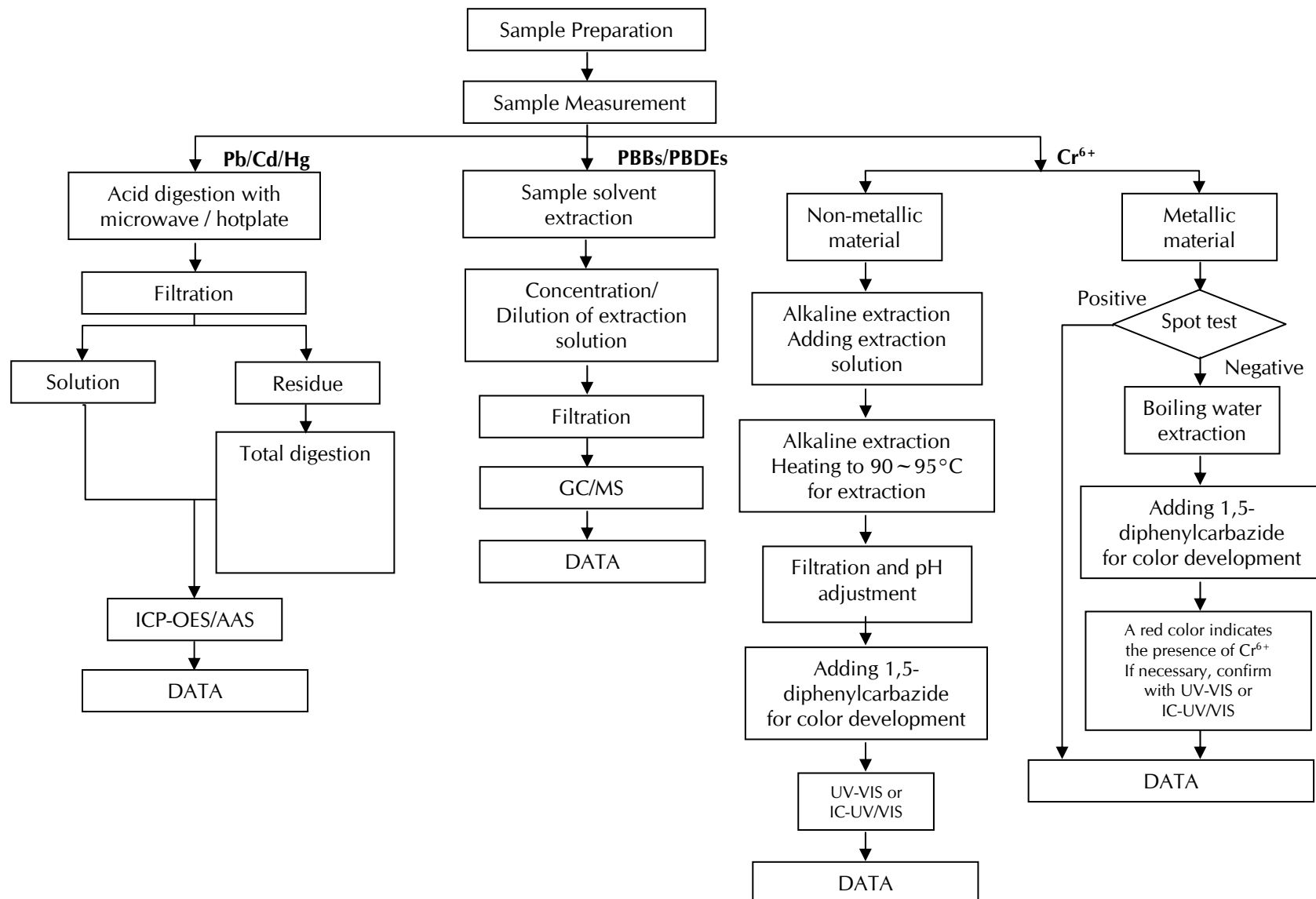
☐ A. Breunig, ☐ K. Grönhardt, ☐ Dr. K. Laue-Schuler, ☒ C. List, ☐ D. Löw
☐ R. Micolay, ☐ M. Neumeister, ☐ Dr. R. Rätze, ☐ K. Scharrer, ☐ M. Tutsch

- Flow charts see next page(s) -

Test procedure



Verification test procedure





Test Report

Number : TWNC00285771

Applicant: Littelfuse Philippines Inc.
LIMA Technology Center, Lipa City,
Malvar, Batangas

Date : Nov 16, 2012

Sample Description:

One (1) group of submitted samples said to be :
Part Description : Solder (Pb is $\geq 90\%$)
Part Number : 692321
Date Sample Received : Nov 12, 2012
Date Test Started : Nov 13, 2012

Test Conducted :

As requested by the applicant, for details please refer to attached pages.

Authorized By:
On Behalf Of Intertek Testing Services
Taiwan Limited



K. Y. Liang
Director



Page 1 of 6

Intertek Testing Services Taiwan Ltd.

8F., No. 423, Ruiguang Rd., Neihu District, Taipei 114, Taiwan, R.O.C.

全國公證檢驗股份有限公司

114 台北市內湖區瑞光路 423 號 8 樓

Tel: (+886-2) 6602-2888 · 2797-8885 Fax: (+886-2) 6602-2410

Number : TWNC00285771

Test Conducted

(I) Test Result Summary :

<u>Test Item</u>	<u>Result (ppm)</u>
	<u>Silvery metal</u>
Heavy Metal	
Cadmium (Cd) content	ND
Lead (Pb) content	934557
Mercury (Hg) content	ND
Chromium VI (Cr ⁶⁺) content (mg/kg with 50cm ²)	Negative (< 0.02)

Remarks: ppm = Parts per million based on weight of tested sample = mg/kg
 ND = Not detected
 < = Less than
 mg/kg with 50cm² = milligram per kilogram with 50 square centimetre
 Negative = A negative test result indicated positive observation
 was not found at the time of Test.

Responsibility of Chemist : Irene Chiou / Kevin Liu

Date Sample Received : Nov 12, 2012

Test Period : Nov 13, 2012 to Nov 16, 2012

(II) RoHS Limits:

<u>Restricted Substances</u>	<u>Limits</u>
Cadmium (Cd) Content	0.01% (100ppm)
Lead (Pb) Content	0.1% (1000ppm)
Mercury (Hg) Content	0.1% (1000ppm)
Chromium VI (Cr ⁶⁺) Content	0.1% (1000ppm)

The above limits were quoted from Annex II of 2011/65/EU for homogeneous material.



Page 2 of 6

Intertek Testing Services Taiwan Ltd.

8F., No. 423, Ruiguang Rd., Neihu District, Taipei 114, Taiwan, R.O.C.

全國公證檢驗股份有限公司

114 台北市內湖區瑞光路 423 號 8 樓

Tel: (+886-2) 6602-2888 · 2797-8885 Fax: (+886-2) 6602-2410

Number : TWNC00285771

Test Conducted

(III) Test Method:

Test Item	Test Method	Reporting Limit
Cadmium (Cd) content	With reference to IEC 62321 edition 1.0:2008 in clause 8/9/10, by microwave digestion until the tested samples are totally dissolved and determined by ICP-OES.	2 ppm
Lead (Pb) content	With reference to IEC 62321 edition 1.0:2008 in clause 8/9/10, by microwave digestion until the tested samples are totally dissolved and determined by ICP-OES.	2 ppm
Mercury (Hg) content	With reference to IEC 62321 edition 1.0:2008 in clause 7, by microwave digestion until the tested samples are totally dissolved and determined by ICP-OES.	2 ppm
Chromium VI (Cr ⁶⁺) content	With reference to IEC 62321 edition 1.0:2008 in annex B, by boiling water extraction and determined by UV-Vis Spectrophotometer.	0.02 mg/kg with 50cm ²

Remark: Reporting limit = Quantitation limit of analyte in sample



Page 3 of 6

Intertek Testing Services Taiwan Ltd.

8F., No. 423, Ruiguang Rd., Neihu District, Taipei 114, Taiwan, R.O.C.

全國公證檢驗股份有限公司

114 台北市內湖區瑞光路 423 號 8 樓

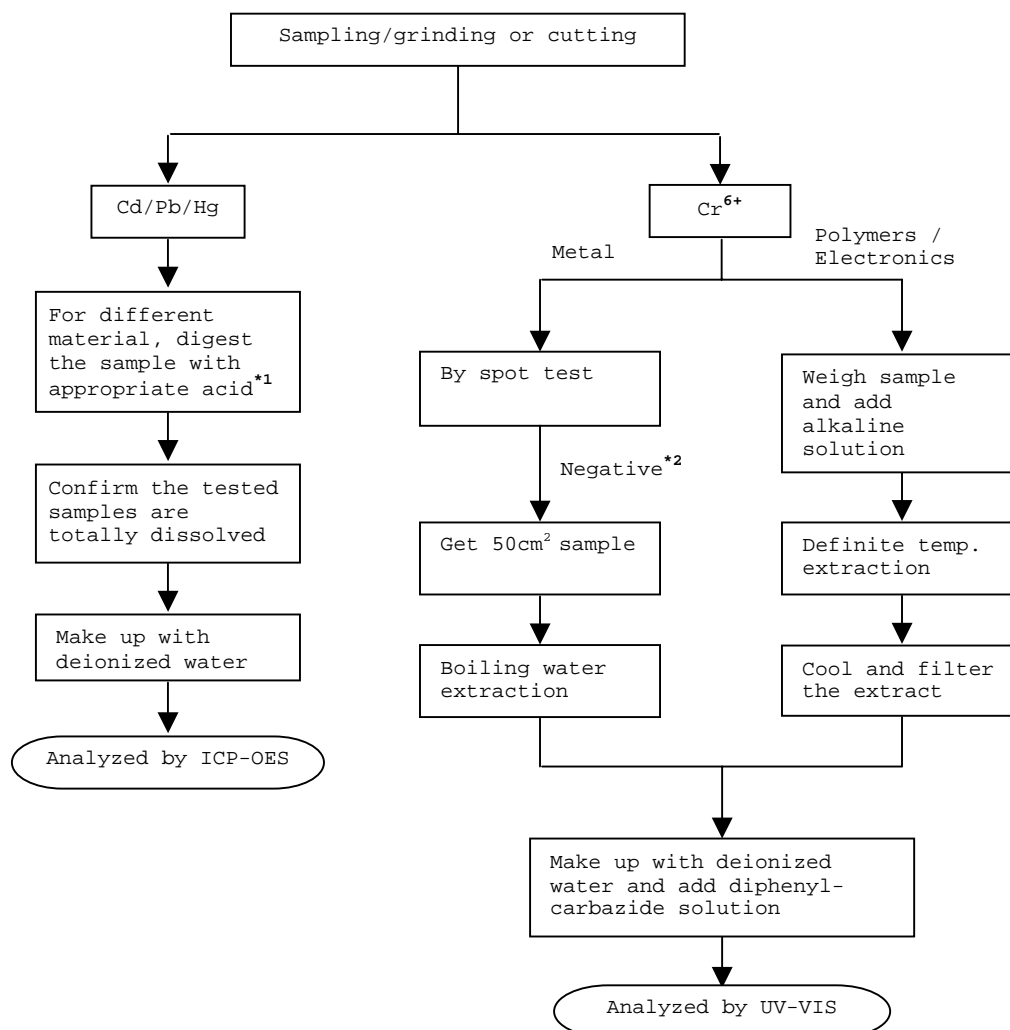
Tel: (+886-2) 6602-2888 · 2797-8885 Fax: (+886-2) 6602-2410

Test Conducted

(IV) Measurement Flowchart:

Test For Cd/Pb/Hg/Chromium (VI)

Reference Standard : IEC 62321 edition 1.0:2008



Number : TWNC00285771

Test Conducted

Remarks:

*1: List of Appropriate Acid:

Material	Acid Added for Digestion
Polymers	HNO ₃ , HCl, HF, H ₂ O ₂ , H ₃ BO ₃
Metals	HNO ₃ , HCl, HF
Electronics	HNO ₃ , HCl, H ₂ O ₂ , HBF ₄

*2: If the result of spot test is positive, Chromium VI would be determined as detected.

End of Report

This report is made solely on the basis of your instructions and/or information and materials supplied by you. It is not intended to be a recommendation for any particular course of action. Intertek does not accept a duty of care or any other responsibility to any person other than the Client in respect of this report and only accepts liability to the Client insofar as is expressly contained in the terms and conditions governing Intertek's provision of services to you. Intertek makes no warranties or representations either express or implied with respect to this report save as provided for in those terms and conditions. We have aimed to conduct the Review on a diligent and careful basis and we do not accept any liability to you for any loss arising out of or in connection with this report, in contract, tort, by statute or otherwise, except in the event of our gross negligence or wilful misconduct.



Page 5 of 6

Intertek Testing Services Taiwan Ltd.

8F., No. 423, Ruiguang Rd., Neihu District, Taipei 114, Taiwan, R.O.C.

全國公證檢驗股份有限公司

114 台北市內湖區瑞光路 423 號 8 樓

Tel: (+886-2) 6602-2888 · 2797-8885 Fax: (+886-2) 6602-2410

Number : TWNC00285771

Test Conducted

Photo



Page 6 of 6

Intertek Testing Services Taiwan Ltd.

8F., No. 423, Ruiguang Rd., Neihu District, Taipei 114, Taiwan, R.O.C.

全國公證檢驗股份有限公司

114 台北市內湖區瑞光路 423 號 8 樓

Tel: (+886-2) 6602-2888 · 2797-8885 Fax: (+886-2) 6602-2410



Test Report

Number : TWNC00285781

Applicant: Littelfuse Philippines Inc.
LIMA Technology Center, Lipa City,
Malvar, Batangas

Date : Nov 19, 2012

Sample Description:

One (1) group of submitted samples said to be :

Part Description : Anaerobic Adhesive

Part Number : 087266

Date Sample Received : Nov 12, 2012

Date Test Started : Nov 13, 2012

Test Conducted :

As requested by the applicant, for details please refer to attached pages.

Authorized By:

On Behalf Of Intertek Testing Services
Taiwan Limited



K. Y. Liang
Director



Page 1 of 10

Intertek Testing Services Taiwan Ltd.

8F., No. 423, Ruiguang Rd., Neihu District, Taipei 114, Taiwan, R.O.C.

全國公證檢驗股份有限公司

114 台北市內湖區瑞光路 423 號 8 樓

Tel: (+886-2) 6602-2888 · 2797-8885 Fax: (+886-2) 6602-2410

Number : TWNC00285781

Test Conducted

(I) Test Result Summary :

Test Item	Result (ppm)
	Green Liquid
Heavy Metal	
Cadmium (Cd) content	ND
Lead (Pb) content	ND
Mercury (Hg) content	ND
Chromium VI (Cr ⁶⁺) content	ND
Polybrominated Biphenyls (PBBs)	
Monobrominated Biphenyls (MonoBB)	ND
Dibrominated Biphenyls (DiBB)	ND
Tribrominated Biphenyls (TriBB)	ND
Tetrabrominated Biphenyls (TetraBB)	ND
Pentabrominated Biphenyls (PentaBB)	ND
Hexabrominated Biphenyls (HexaBB)	ND
Heptabrominated Biphenyls (HeptaBB)	ND
Octabrominated Biphenyls (OctaBB)	ND
Nonabrominated Biphenyls (NonaBB)	ND
Decabrominated Biphenyl (DecaBB)	ND
Polybrominated Diphenyl Ethers (PBDEs)	
Monobrominated Diphenyl Ethers (MonoBDE)	ND
Dibrominated Diphenyl Ethers (DiBDE)	ND
Tribrominated Diphenyl Ethers (TriBDE)	ND
Tetrabrominated Diphenyl Ethers (TetraBDE)	ND
Pentabrominated Diphenyl Ethers (PentaBDE)	ND
Hexabrominated Diphenyl Ethers (HexaBDE)	ND
Heptabrominated Diphenyl Ethers (HeptaBDE)	ND
Octabrominated Diphenyl Ethers (OctaBDE)	ND
Nonabrominated Diphenyl Ethers (NonaBDE)	ND
Decabrominated Diphenyl Ether (DecaBDE)	ND



Page 2 of 10

Intertek Testing Services Taiwan Ltd.

8F., No. 423, Ruiguang Rd., Neihu District, Taipei 114, Taiwan, R.O.C.

全國公證檢驗股份有限公司

114 台北市內湖區瑞光路 423 號 8 樓

Tel: (+886-2) 6602-2888 · 2797-8885 Fax: (+886-2) 6602-2410

Number : TWNC00285781

Test Conducted

(I) Test Result Summary :

<u>Test Item</u>	<u>Result (ppm)</u>
	<u>Green Liquid</u>
Halogen Content	
Fluorine (F)	ND
Chlorine (Cl)	ND
Bromine (Br)	ND
Iodine (I)	ND
Phthalates	
Di(2-ethylhexyl) Phthalate (DEHP)	ND
Dibutyl Phthalate (DBP)	77
Benzyl Butyl Phthalate (BBP)	ND
Others	
Hexabromocyclododecane (HBCDD)	ND

Remarks: ppm = Parts per million based on wet weight of tested sample =
mg/kg

ND = Not detected

Responsibility of Chemist : Irene Chiou / Kevin Liu / Cathy Chen

Date Sample Received : Nov 12, 2012

Test Period : Nov 13, 2012 To Nov 15, 2012

(II) RoHS Limits:

<u>Restricted Substances</u>	<u>Limits</u>
Cadmium (Cd) Content	0.01% (100ppm)
Lead (Pb) Content	0.1% (1000ppm)
Mercury (Hg) Content	0.1% (1000ppm)
Chromium VI (Cr ⁶⁺) Content	0.1% (1000ppm)
Polybrominated Biphenyls (PBBs)	0.1% (1000ppm)
Polybrominated Diphenyl Ehters (PBDEs)	0.1% (1000ppm)

The above limits were quoted from Annex II of 2011/65/EU for homogeneous material.



Page 3 of 10

Intertek Testing Services Taiwan Ltd.

8F., No. 423, Ruiguang Rd., Neihu District, Taipei 114, Taiwan, R.O.C.

全國公證檢驗股份有限公司

114 台北市內湖區瑞光路 423 號 8 樓

Tel: (+886-2) 6602-2888 · 2797-8885 Fax: (+886-2) 6602-2410

Test Conducted

(III) Test Method:

Test Item	Test Method	Reporting Limit
Cadmium (Cd) content	With reference to IEC 62321 edition 1.0:2008 in clause 8/9/10, by microwave digestion until the tested samples are totally dissolved and determined by ICP-OES.	2 ppm
Lead (Pb) content	With reference to IEC 62321 edition 1.0:2008 in clause 8/9/10, by microwave digestion until the tested samples are totally dissolved and determined by ICP-OES.	2 ppm
Mercury (Hg) content	With reference to IEC 62321 edition 1.0:2008 in clause 7, by microwave digestion until the tested samples are totally dissolved and determined by ICP-OES.	2 ppm
Chromium VI (Cr^{6+}) content	With reference to IEC 62321 edition 1.0:2008 in annex C, by alkaline digestion and determined by UV-Vis spectrophotometer.	1 ppm
Polybrominated Biphenyls (PBBs)	With reference to IEC 62321 edition 1.0:2008 in annex A, by solvent extraction and determined by GC-MS and further HPLC-DAD confirmation when necessary.	5 ppm
Polybrominated Diphenyl Ethers (PBDEs)	With reference to IEC 62321 edition 1.0:2008 in annex A, by solvent extraction and determined by GC-MS and further HPLC-DAD confirmation when necessary.	5 ppm
Halogen Content	With reference to EN 14582:2007 by calorimetric bomb with oxygen and determined by Ion Chromatograph.	50 ppm
Phthalates	With reference to EN 14372: 2004, by solvent extraction and determined by GC-MS.	50 ppm
Hexabromocyclododecane (HBCDD)	With reference to USEPA 3540C, by solvent extraction and determined by GC-MS.	10 ppm

Remark: Reporting limit = Quantitation limit of analyte in sample

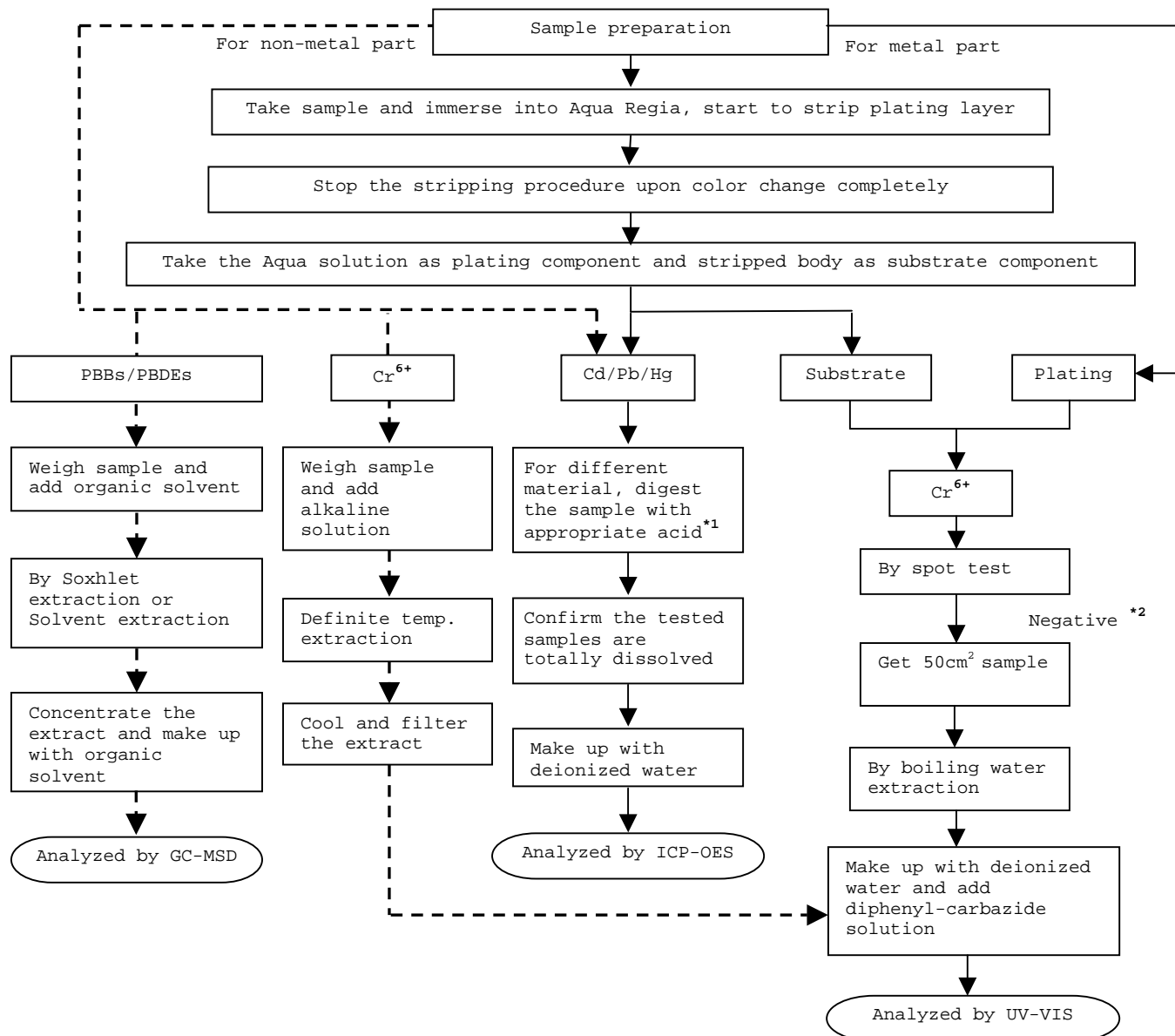


Test Conducted

(IV) Measurement Flowchart:

Test for Cd/Pb/Hg/Chromium (VI)/PBBS/PBDES Contents

Reference Standard: IEC 62321 edition 1.0:2008



Number : TWNC00285781

Test Conducted

(IV) Measurement Flowchart:

Remarks:

*1: List of Appropriate Acid:

<u>Material</u>	<u>Acid Added for Digestion</u>
Polymers	HNO ₃ , HCl, HF, H ₂ O ₂ , H ₃ BO ₃
Metals	HNO ₃ , HCl, HF
Electronics	HNO ₃ , HCl, H ₂ O ₂ , HBF ₄

*2: If the result of spot test is positive, Chromium VI would be determined as detected.



Page 6 of 10

Intertek Testing Services Taiwan Ltd.

8F., No. 423, Ruiguang Rd., Neihu District, Taipei 114, Taiwan, R.O.C.

全國公證檢驗股份有限公司

114 台北市內湖區瑞光路 423 號 8 樓

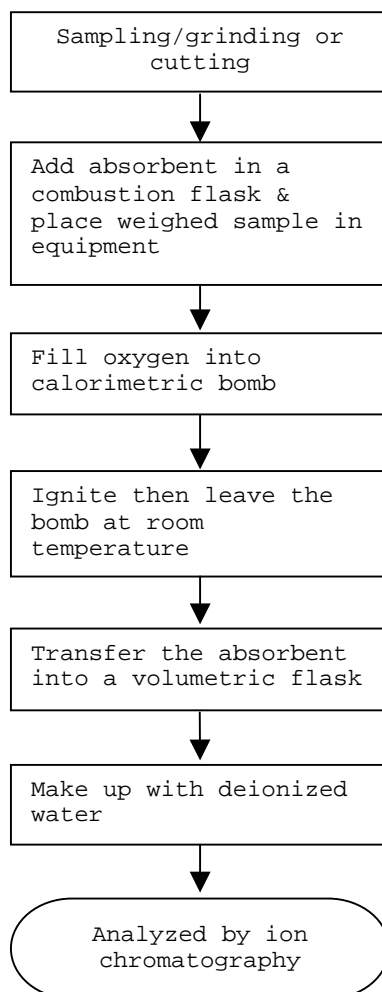
Tel: (+886-2) 6602-2888 · 2797-8885 Fax: (+886-2) 6602-2410

Test Conducted

(IV) Measurement Flowchart:

Test for Halogen Content

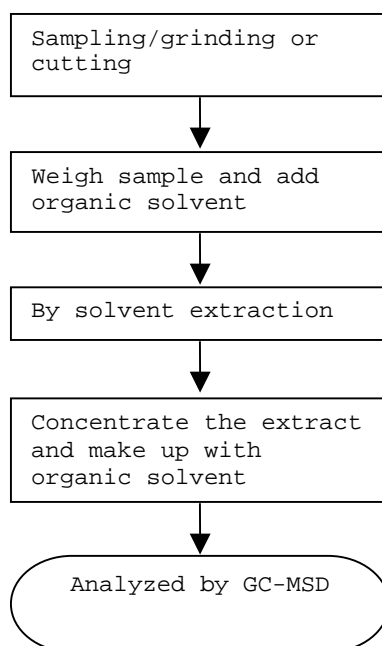
Reference Standard : EN 14582



Test Conducted

(IV) Measurement Flowchart:

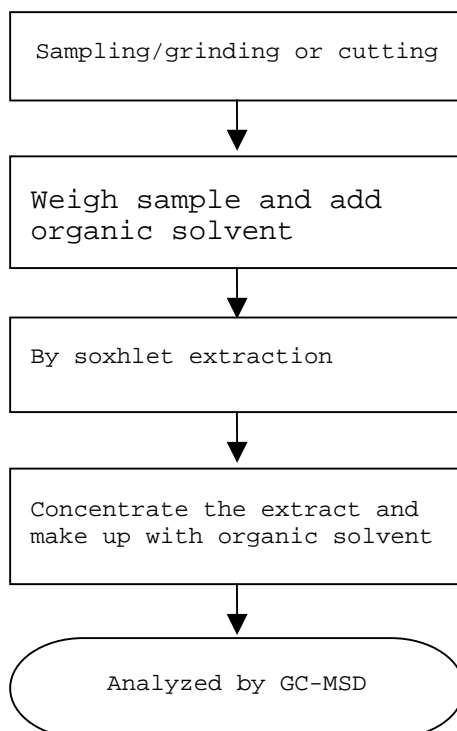
Test For Phthalates Contents
Reference Method: EN 14372: 2004



Test Conducted

(IV) Measurement Flowchart:

Test For Hexabromocyclododecane (HBCDD)
Reference Standard : USEPA 3540C



End of Report

This report is made solely on the basis of your instructions and/or information and materials supplied by you. It is not intended to be a recommendation for any particular course of action. Intertek does not accept a duty of care or any other responsibility to any person other than the Client in respect of this report and only accepts liability to the Client insofar as is expressly contained in the terms and conditions governing Intertek's provision of services to you. Intertek makes no warranties or representations either express or implied with respect to this report save as provided for in those terms and conditions. We have aimed to conduct the Review on a diligent and careful basis and we do not accept any liability to you for any loss arising out of or in connection with this report, in contract, tort, by statute or otherwise, except in the event of our gross negligence or wilful misconduct.



Number : TWNC00285781

Test Conducted

Photo





Test Report

Number : TWNC00253636

Applicant: Littelfuse Philippines Inc.
LIMA Technology Center, Lipa City,
Malvar, Batangas

Date : Apr 24, 2012

Sample Description:

One (1) group of submitted samples said to be :

Part Description : Black Ink

Part Number : 425809

Date Sample Received : Apr 19, 2012

Date Test Started : Apr 19, 2012

Test Conducted :

As requested by the applicant, for details please refer to attached pages.

Authorized By:

On Behalf Of Intertek Testing Services
Taiwan Limited



K. Y. Liang
Director

This report shall not be reproduced
except in full, without the written
approval of the laboratory.

Test Conducted

(I) Test Result Summary :

Test Item	Result (ppm)
	Black Paste
Heavy Metal	
Cadmium (Cd) content	ND
Lead (Pb) content	ND
Mercury (Hg) content	ND
Chromium VI (Cr ⁶⁺) content	ND
Polybrominated Biphenyls (PBBs)	
Monobrominated Biphenyls (MonoBB)	ND
Dibrominated Biphenyls (DiBB)	ND
Tribrominated Biphenyls (TriBB)	ND
Tetrabrominated Biphenyls (TetraBB)	ND
Pentabrominated Biphenyls (PentaBB)	ND
Hexabrominated Biphenyls (HexaBB)	ND
Heptabrominated Biphenyls (HeptaBB)	ND
Octabrominated Biphenyls (OctaBB)	ND
Nonabrominated Biphenyls (NonaBB)	ND
Decabrominated Biphenyl (DecaBB)	ND
Polybrominated Diphenyl Ethers (PBDEs)	
Monobrominated Diphenyl Ethers (MonoBDE)	ND
Dibrominated Diphenyl Ethers (DiBDE)	ND
Tribrominated Diphenyl Ethers (TriBDE)	ND
Tetrabrominated Diphenyl Ethers (TetraBDE)	ND
Pentabrominated Diphenyl Ethers (PentaBDE)	ND
Hexabrominated Diphenyl Ethers (HexaBDE)	ND
Heptabrominated Diphenyl Ethers (HeptaBDE)	ND
Octabrominated Diphenyl Ethers (OctaBDE)	ND
Nonabrominated Diphenyl Ethers (NonaBDE)	ND
Decabrominated Diphenyl Ether (DecaBDE)	ND

Number : TWNC00253636

Test Conducted

(I) Test Result Summary :

<u>Test Item</u>	<u>Result (ppm)</u>
	<u>Black Paste</u>
Halogen Content	
Fluorine (F)	ND
Chlorine (Cl)	610
Bromine (Br)	ND
Iodine (I)	ND
Phthalates	
Di(2-ethylhexyl) Phthalate (DEHP)	ND
Dibutyl Phthalate (DBP)	ND
Benzyl Butyl Phthalate (BBP)	ND
Others	
Hexabromocyclododecane (HBCDD)	ND

Remarks: ppm = Parts per million based on wet weight of tested sample =
mg/kg
ND = Not detected

Responsibility of Chemist : Irene Chiou / Kevin Liu / Cathy Chen

Date Sample Received : Apr 19, 2012

Test Period : Apr 19, 2012 To Apr 24, 2012

(II) RoHS Requirement:

<u>Restricted Substances</u>	<u>Limits</u>
Cadmium (Cd) Content	0.01% (100ppm)
Lead (Pb) Content	0.1% (1000ppm)
Mercury (Hg) Content	0.1% (1000ppm)
Chromium VI (Cr ⁶⁺) Content	0.1% (1000ppm)
Polybrominated Biphenyls (PBBs)	0.1% (1000ppm)
Polybrominated Diphenyl Ehters (PBDEs)	0.1% (1000ppm)

The above limits were quoted from 2002/95/EC and amendment 2005/618/EC for homogeneous material.

Test Conducted

(III) Test Method:

Test Item	Test Method	Reporting Limit
Cadmium (Cd) content	With reference to IEC 62321 edition 1.0:2008 in clause 8/9/10, by microwave digestion until the tested samples are totally dissolved and determined by ICP-OES.	2 ppm
Lead (Pb) content	With reference to IEC 62321 edition 1.0:2008 in clause 8/9/10, by microwave digestion until the tested samples are totally dissolved and determined by ICP-OES.	2 ppm
Mercury (Hg) content	With reference to IEC 62321 edition 1.0:2008 in clause 7, by microwave digestion until the tested samples are totally dissolved and determined by ICP-OES.	2 ppm
Chromium VI (Cr^{6+}) content	With reference to IEC 62321 edition 1.0:2008 in annex C, by alkaline digestion and determined by UV-Vis spectrophotometer.	1 ppm
Polybrominated Biphenyls (PBBs)	With reference to IEC 62321 edition 1.0:2008 in annex A, by solvent extraction and determined by GC-MS and further HPLC-DAD confirmation when necessary.	5 ppm
Polybrominated Diphenyl Ethers (PBDEs)	With reference to IEC 62321 edition 1.0:2008 in annex A, by solvent extraction and determined by GC-MS and further HPLC-DAD confirmation when necessary.	5 ppm
Halogen Content	With reference to EN 14582:2007 by calorimetric bomb with oxygen and determined by Ion Chromatograph.	50 ppm
Phthalates	With reference to EN 14372: 2004, by solvent extraction and determined by GC-MS.	10 ppm
Hexabromocyclododecane (HBCDD)	With reference to USEPA 3540C, by solvent extraction and determined by GC-MSD.	10 ppm

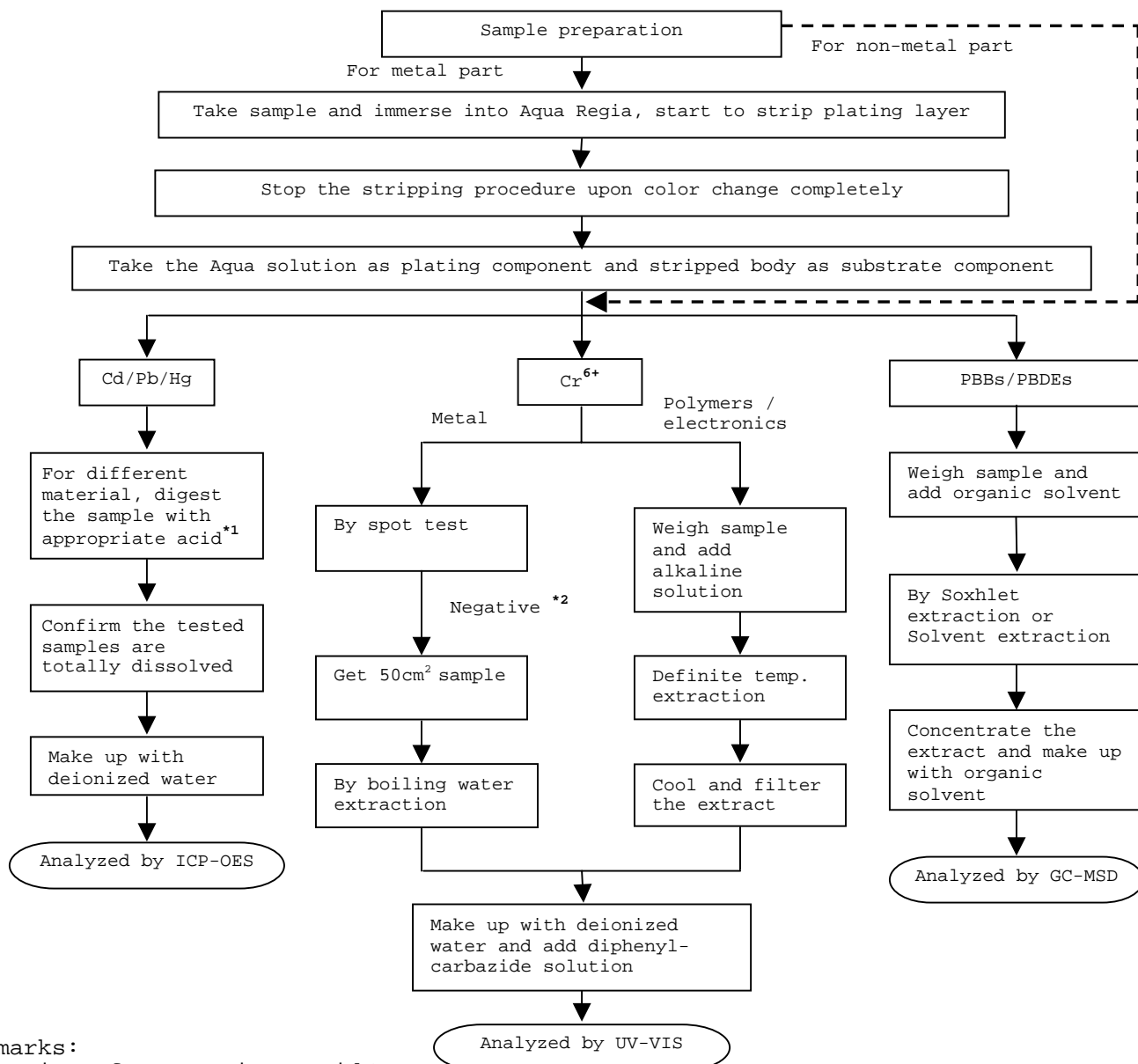
Remark: Reporting limit = Quantitation limit of analyte in sample

Test Conducted

(IV) Measurement Flowchart:

Test for Cd/Pb/Hg/Chromium (VI)/PBBS/PBDES Contents

Reference Standard: IEC 62321 edition 1.0:2008



Remarks:

*1: List of Appropriate Acid:

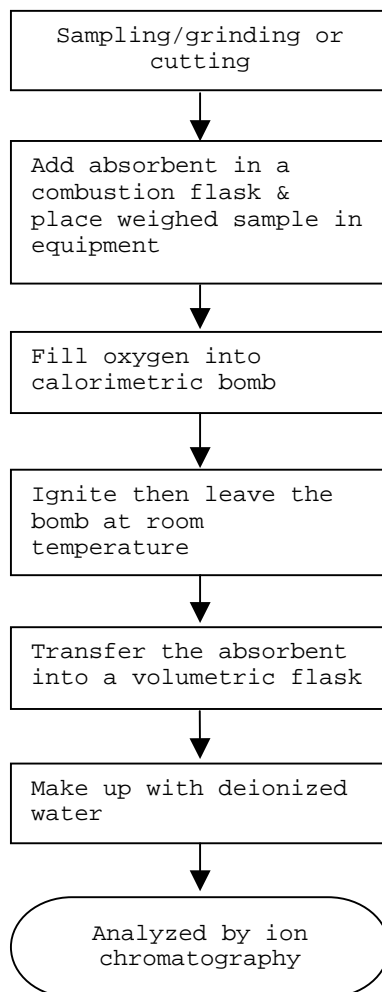
Material	Acid Added for Digestion
Polymers	HNO ₃ , HCl, HF, H ₂ O ₂ , H ₃ BO ₃
Metals	HNO ₃ , HCl, HF
Electronics	HNO ₃ , HCl, H ₂ O ₂ , HBF ₄

*2: If the result of spot test is positive, Chromium VI would be determined as detected.

Test Conducted

(IV) Measurement Flowchart:

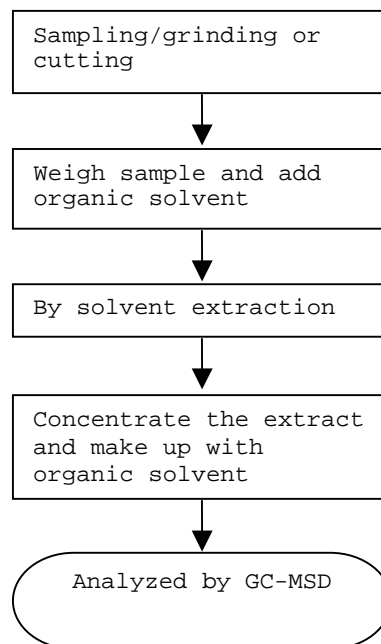
Test for Halogen Content
Reference Standard: EN 14582



Test Conducted

(IV) Measurement Flowchart:

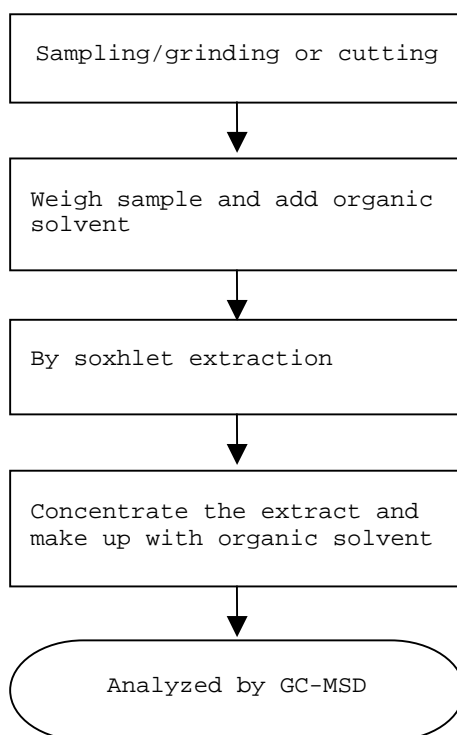
Test For Phthalates Contents
Reference Method: EN 14372: 2004



Test Conducted

(IV) Measurement Flowchart:

Test For Hexabromocyclododecane (HBCDD)
Reference Standard : USEPA 3540C



End of Report

Number : TWNC00253636

Test Conducted

Photo





Test Report

Number : TWNC00285777

Applicant: Littelfuse Philippines Inc.
LIMA Technology Center, Lipa City,
Malvar, Batangas

Date : Nov 19, 2012

Sample Description:

One (1) group of submitted samples said to be :

Part Description : Clip

Part Number : 883-070

Date Sample Received : Nov 12, 2012

Date Test Started : Nov 13, 2012

Test Conducted :

As requested by the applicant, for details please refer to attached pages.

Authorized By:

On Behalf Of Intertek Testing Services
Taiwan Limited



K. Y. Liang
Director



Page 1 of 6

Intertek Testing Services Taiwan Ltd.

8F., No. 423, Ruiguang Rd., Neihu District, Taipei 114, Taiwan, R.O.C.

全國公證檢驗股份有限公司

114 台北市內湖區瑞光路 423 號 8 樓

Tel: (+886-2) 6602-2888 · 2797-8885 Fax: (+886-2) 6602-2410

Number : TWNC00285777

Test Conducted

(I) Test Result Summary :

<u>Test Item</u>	<u>Result (ppm)</u>	
	<u>(1)</u>	<u>(2)</u>
Heavy Metal		
Cadmium (Cd) content	ND	ND
Lead (Pb) content	ND	ND
Mercury (Hg) content	ND	ND
Chromium VI (Cr ⁶⁺) content (mg/kg with 50cm ²)	Negative (< 0.02) (#)	Negative (< 0.02) (#)

Remarks: ppm = Parts per million based on weight of tested sample = mg/kg
 ND = Not detected
 < = Less than
 mg/kg with 50cm² = milligram per kilogram with 50 square centimetre
 Negative = A negative test result indicated positive observation was not found at the time of Test.
 # = Due to the insufficient sample area, reduced total sample surface of 10 cm² was used and the dilution factor was adjusted accordingly.

Tested Components

- (1) Gunmetal metal base material
- (2) Silvery plating layer

Responsibility of Chemist : Irene Chiou / Kevin Liu

Date Sample Received : Nov 12, 2012
 Test Period : Nov 13, 2012 to Nov 16, 2012

(II) RoHS Limits:

<u>Restricted Substances</u>	<u>Limits</u>
Cadmium (Cd) Content	0.01% (100ppm)
Lead (Pb) Content	0.1% (1000ppm)
Mercury (Hg) Content	0.1% (1000ppm)
Chromium VI (Cr ⁶⁺) Content	0.1% (1000ppm)

The above limits were quoted from Annex II of 2011/65/EU for homogeneous material.

Test Conducted

(III) Test Method:

Test Item	Test Method	Reporting Limit
Cadmium (Cd) content	With reference to IEC 62321 edition 1.0:2008 in clause 8/9/10, by microwave digestion until the tested samples are totally dissolved and determined by ICP-OES.	2 ppm
Lead (Pb) content	With reference to IEC 62321 edition 1.0:2008 in clause 8/9/10, by microwave digestion until the tested samples are totally dissolved and determined by ICP-OES.	2 ppm
Mercury (Hg) content	With reference to IEC 62321 edition 1.0:2008 in clause 7, by microwave digestion until the tested samples are totally dissolved and determined by ICP-OES.	2 ppm
Chromium VI (Cr^{6+}) content	With reference to IEC 62321 edition 1.0:2008 in annex B, by boiling water extraction and determined by UV-Vis Spectrophotometer.	0.02 mg/kg with 50cm ²

Remark: Reporting limit = Quantitation limit of analyte in sample

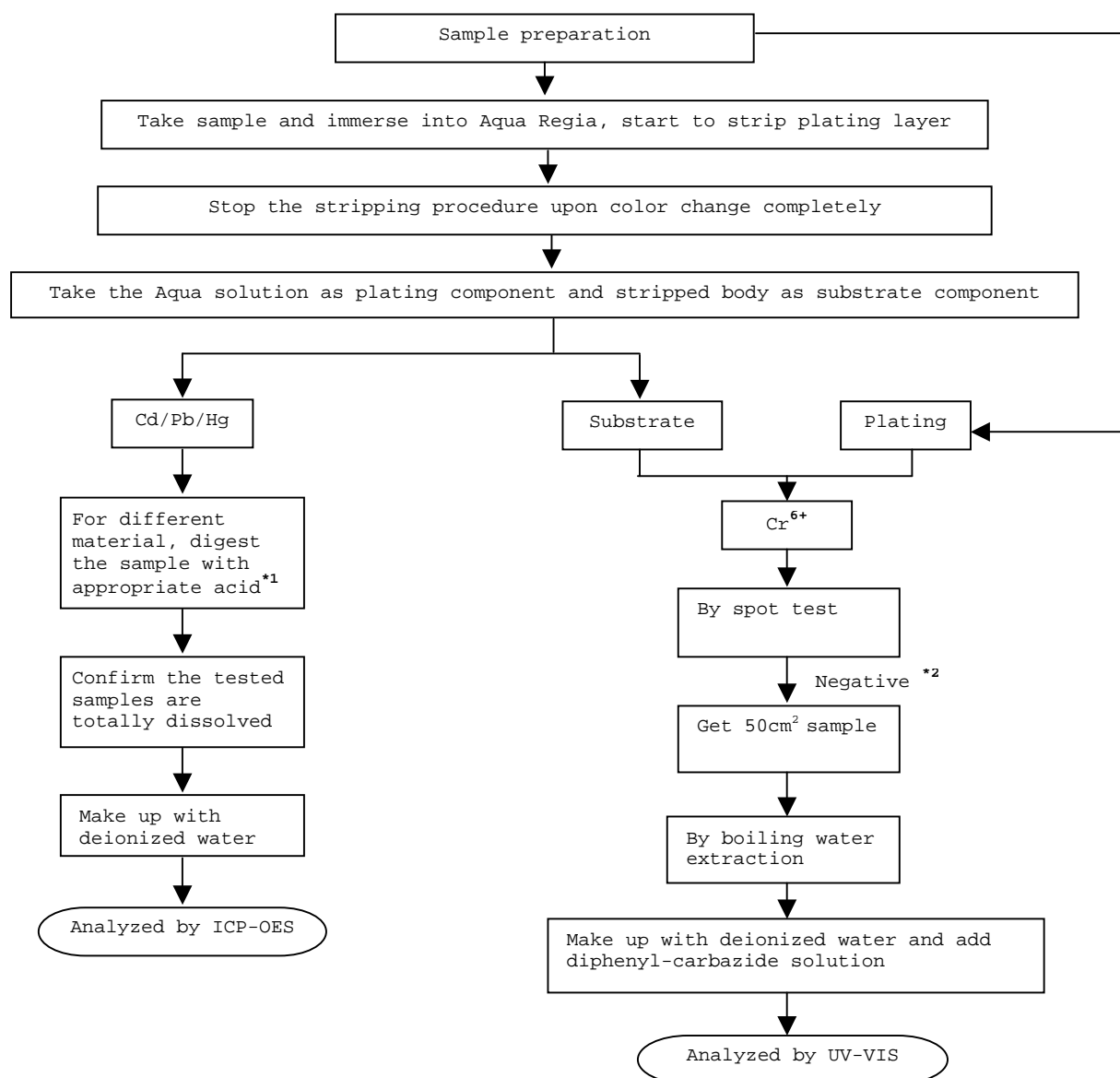


Test Conducted

(IV) Measurement Flowchart:

Test For Cd/Pb/Hg/Chromium (VI)

Reference Standard : IEC 62321 edition 1.0:2008





Number : TWNC00285777

Test Conducted

Remarks:

*1: List Of Appropriate Acid:

<u>Material</u>	<u>Acid Added For Digestion</u>
Polymers	HNO ₃ ,HCl, HF, H ₂ O ₂ ,H ₃ BO ₃
Metals	HNO ₃ ,HCl, HF
Electronics	HNO ₃ ,HCl, H ₂ O ₂ ,HBF ₄

*2: If the result of spot test is positive, Chromium VI would be determined as detected.

End of Report

This report is made solely on the basis of your instructions and/or information and materials supplied by you. It is not intended to be a recommendation for any particular course of action. Intertek does not accept a duty of care or any other responsibility to any person other than the Client in respect of this report and only accepts liability to the Client insofar as is expressly contained in the terms and conditions governing Intertek's provision of services to you. Intertek makes no warranties or representations either express or implied with respect to this report save as provided for in those terms and conditions. We have aimed to conduct the Review on a diligent and careful basis and we do not accept any liability to you for any loss arising out of or in connection with this report, in contract, tort, by statute or otherwise, except in the event of our gross negligence or wilful misconduct.



Page 5 of 6

Intertek Testing Services Taiwan Ltd.

8F., No. 423, Ruiguang Rd., Neihu District, Taipei 114, Taiwan, R.O.C.

全國公證檢驗股份有限公司

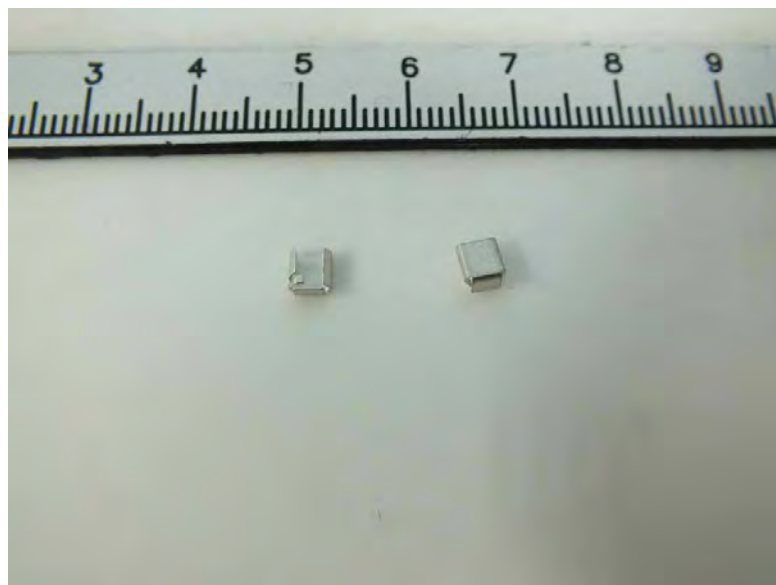
114 台北市內湖區瑞光路 423 號 8 樓

Tel: (+886-2) 6602-2888 · 2797-8885 Fax: (+886-2) 6602-2410

Number : TWNC00285777

Test Conducted

Photo



Page 6 of 6

Intertek Testing Services Taiwan Ltd.

8F., No. 423, Ruiguang Rd., Neihu District, Taipei 114, Taiwan, R.O.C.

全國公證檢驗股份有限公司

114 台北市內湖區瑞光路 423 號 8 樓

Tel: (+886-2) 6602-2888 · 2797-8885 Fax: (+886-2) 6602-2410