



ICP Test Report Certification Packet

Company name: Littelfuse, Inc.

Product Series: Nano2 Fuse - SB

Product #: 454xxx Series

Issue Date: November 12, 2013

It is hereby certified by Littelfuse, Inc. that there is neither RoHS (EU Directive 2002/95/EC, 2011/65/EU)-restricted substance nor such use, for materials to be used for unit parts, for packing/packaging materials, and for additives and the like in the manufacturing processes.

In addition, it is hereby reported to you that the parts and sub-materials, the materials to be used for unit parts, the packing/packaging materials, and the additives and the like in the manufacturing processes, are all composed of the following components.

Issued by: 
JORDANUFF H. CABILAN

[Global EHS Engineer]

(1) Parts, sub-materials and unit parts

This document covers the Nano2 Fuse - SB RoHS-Compliant series products manufactured by Littelfuse, Inc.

< Raw Materials Used

Please see Table 1

(2) The ICP data on all measurable substances

Please see appropriate pages as identified in Table 1

Remarks :

Pb (lead) contained in the high temperature melting solder > 85% and is categorized as exempt under section 7a of the RoHS Annex.



Table 1: List of Raw Materials covered by this report

Total Parts	Raw Material Part Number	Raw Material Description	Page(s)	IPC
1	910-238	Cap (Silver Plated Brass)	3-7	Cap & Plating
2	Frequenta C221 (909-434)	Body (Ceramic Tube)	8-41	Body
3	082xxx-001	Element – Cu99.9MSn	42-45	Element
5	692323	Solder	46-49	Solder
6	64811x	Yarn 6481xx (GLZZXXX)	50-59	Yarn
7	648106-001	Yarn	60-65	Yarn
8	648112-001	Yarn	66-71	Yarn
9	425809	Ink	72-85	Ink



Test Report

Applicant: Littelfuse, Inc.
LIMA Technology Center, Lipa City,
Malvar, Batangas

Number : TWNC00300506

Date : Mar 07, 2013

Sample Description:

One (1) group of submitted samples said to be :

Part Description : Cap
Part Number : 910-238
Date Sample Received : Feb 26, 2013
Date Test Started : Feb 26, 2013

Test Conducted :

As requested by the applicant, for details please refer to attached pages.

Authorized by:
On Behalf of Intertek Testing Services
Taiwan Limited



K. Y. Liang
Director



Intertek Testing Services Taiwan Ltd.

8F., No. 423, Ruiguang Rd., Neihu District, Taipei 11492, Taiwan, R.O.C.

全國公證檢驗股份有限公司

11492 台北市內湖區瑞光路 423 號 8 樓

Tel: (+886-2) 6602-2888 · 2797-8885 Fax: (+886-2) 6602-2410

Number : TWNC00300506

Test Conducted

(I) Test Result Summary:

Test Item	Unit	Test Method	Result		RL
			(1)	(2)	
Heavy Metal					
Cadmium (Cd) content	ppm	With reference to IEC 62321: 2008, by microwave digestion and determined by ICP-OES.	ND	ND	2
Lead (Pb) content	ppm	With reference to IEC 62321: 2008, by microwave digestion and determined by ICP-OES.	22	ND	2
Mercury (Hg) content	ppm	With reference to IEC 62321: 2008, by microwave digestion and determined by ICP-OES.	ND	ND	2
Chromium VI (Cr ⁶⁺) content	mg/kg with 50 cm ²	With reference to IEC 62321: 2008, by boiling water extraction and determined by UV-Vis Spectrophotometer.	Negative	Negative	0.02

Remarks: ppm = parts per million based on weight of tested sample = mg/kg
 ND = Not detected
 RL = Reporting Limit, Quantitation limit of analyte in sample
 mg/kg with 50cm² = milligram per kilogram with 50 square centimeter
 Negative = A negative test result indicated positive observation was not found at the time of Test.

Tested Components

- (1) Silvery metal cap
- (2) Silvery plating layer

Responsibility of Chemist: Kevin Liu/ Irene Chiou

Date Sample Received : Feb 26, 2013

Test Period : Feb 26, 2013 to Mar 04, 2013

(II) Limit:

RoHS Limit

<u>Restricted Substances</u>	<u>Limits</u>
Cadmium (Cd) content	0.01% (100ppm)
Lead (Pb) content	0.1% (1000ppm)
Mercury (Hg) content	0.1% (1000ppm)
Chromium VI (Cr ⁶⁺) content	0.1% (1000ppm)

The above limits were quoted from Annex II of 2011/65/EU for homogeneous material.



Intertek Testing Services Taiwan Ltd.

8F., No. 423, Ruiguang Rd., Neihu District, Taipei 11492, Taiwan, R.O.C.

全國公證檢驗股份有限公司

11492 台北市內湖區瑞光路 423 號 8 樓

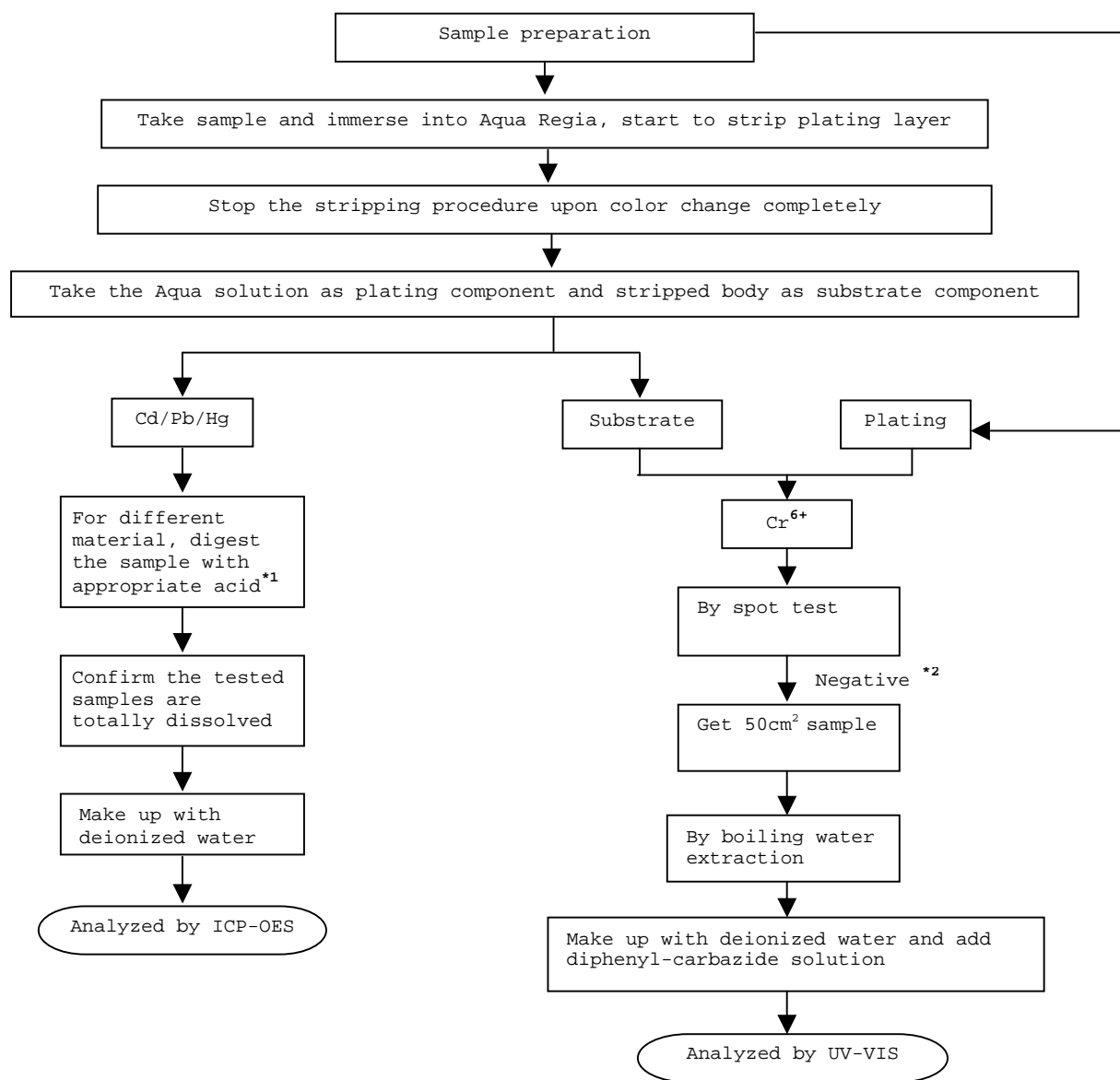
Tel: (+886-2) 6602-2888 · 2797-8885 Fax: (+886-2) 6602-2410

Test Conducted

(III) Measurement Flowchart:

Test For Cd/Pb/Hg/Chromium (VI)

Reference Standard: IEC 62321 edition 1.0:2008





Number : TWNC00300506

Test Conducted

Remarks:

*1: List Of Appropriate Acid:

<u>Material</u>	<u>Acid Added For Digestion</u>
Polymers	HNO ₃ , HCl, HF, H ₂ O ₂ , H ₃ BO ₃
Metals	HNO ₃ , HCl, HF
Electronics	HNO ₃ , HCl, H ₂ O ₂ , HBF ₄

*2: If the result of spot test is positive, Chromium VI would be determined as detected.

End of Report

This report is made solely on the basis of your instructions and/or information and materials supplied by you. It is not intended to be a recommendation for any particular course of action. Intertek does not accept a duty of care or any other responsibility to any person other than the Client in respect of this report and only accepts liability to the Client insofar as is expressly contained in the terms and conditions governing Intertek's provision of services to you. Intertek makes no warranties or representations either express or implied with respect to this report save as provided for in those terms and conditions. We have aimed to conduct the Review on a diligent and careful basis and we do not accept any liability to you for any loss arising out of or in connection with this report, in contract, tort, by statute or otherwise, except in the event of our gross negligence or wilful misconduct.



Page 4 of 5

Intertek Testing Services Taiwan Ltd.

8F., No. 423, Ruiguang Rd., Neihu District, Taipei 11492, Taiwan, R.O.C.

全國公證檢驗股份有限公司

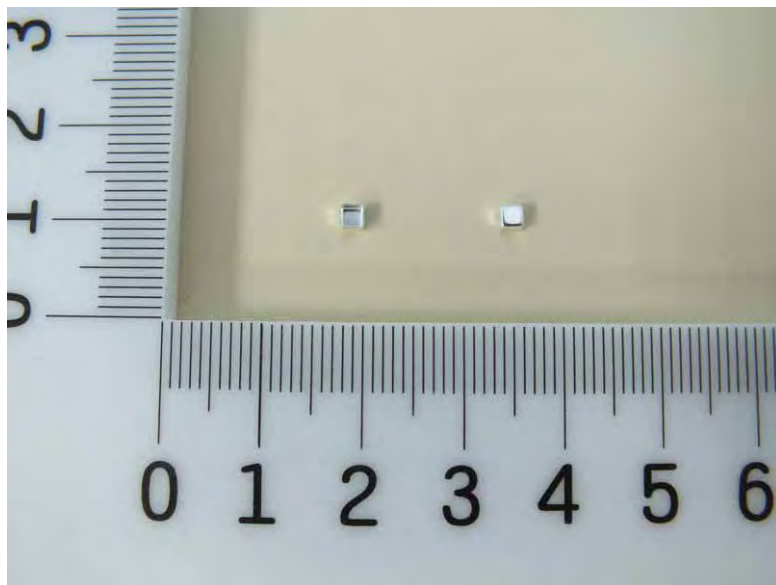
11492 台北市內湖區瑞光路 423 號 8 樓

Tel: (+886-2) 6602-2888 · 2797-8885 Fax: (+886-2) 6602-2410

Test Conducted

Number : TWNC00300506

Photo



Test Report

No. : CE/2013/13196 Date : 2013/01/22 Page : 1 of 29

CERAMTEC GMBH
GESCHAFTSBEREICH MULTIFUNKTIONSKERAMIK, LUITPOLDSTRABE 15, 91207 LAUF



The following sample(s) was/were submitted and identified by/on behalf of the client as:

Sample Description : CERAMIC
Style/Item No. : FREQUENTA C221
Sample Receiving Date : 2013/1/14
Testing Period : 2013/1/14 TO 2013/01/22

Test Result(s) : Please refer to next page(s).

Conclusion : Based on the performed tests on submitted samples, the test results of Cadmium, Lead, Mercury, Hexavalent Chromium Cr(VI), PBBs and PBDEs comply with the limits as set by RoHS Directive 2011/65/EU Annex II; recasting 2002/95/EC.


Chenyu Kung / Operation Manager
Signed for and on behalf of
SGS TAIWAN LTD.
Chemical Laboratory – Taipei

Unless otherwise stated the results shown in this test report refer only to the sample(s) tested. This test report cannot be reproduced, except in full, without prior written permission of the Company. 除非另有說明，此報告結果僅對測試之樣品負責。本報告未經本公司同意，不可部分複製。
This document is issued by the Company subject to its General Conditions of Service printed overleaf, available on request or accessible at www.sgs.com/terms_and_conditions.htm and, for electronic format documents, subject to Terms and Conditions for Electronic Documents at www.sgs.com/en/Terms-and-Conditions/Terms-e-Documents. Attention is drawn to the limitation of liability, indemnification and jurisdiction issues defined therein. Any holder of this document is advised that information contained hereon reflects the Company's findings at the time of its intervention only and within the limits of Client's instructions, if any. The Company's sole responsibility is to its Client and this document does not exonerate parties to a transaction from exercising all their rights and obligations under the transaction documents. This document cannot be reproduced except in full, without prior written approval of the Company. Any unauthorized alteration, forgery or falsification of the content or appearance of this document is unlawful and offenders may be prosecuted to the fullest extent of the law.

Test Report

No. : CE/2013/13196 Date : 2013/01/22 Page : 2 of 29

CERAMTEC GMBH

GESCHAFTSBEREICH MULTIFUNKTIONSKERAMIK, LUITPOLDSTRASSE 15, 91207 LAUF



Test Result(s)

PART NAME No.1 : CREAM CERAMIC

Test Item(s)	Unit	Method	MDL	Result	Limit
				No.1	
Cadmium (Cd)	mg/kg	With reference to IEC 62321: 2008 and performed by ICP-AES.	2	n.d.	100
Lead (Pb)	mg/kg	With reference to IEC 62321: 2008 and performed by ICP-AES.	2	n.d.	1000
Mercury (Hg)	mg/kg	With reference to IEC 62321: 2008 and performed by ICP-AES.	2	n.d.	1000
Hexavalent Chromium Cr(VI)	mg/kg	With reference to IEC 62321: 2008 and performed by UV-VIS.	2	n.d.	1000
BBP (Benzyl butyl phthalate) (CAS No.: 85-68-7)	%	With reference to EN 14372. Analysis was performed by GC/MS.	0.003	n.d.	-
DEHP (Di- (2-ethylhexyl) phthalate) (CAS No.: 117-81-7)	%	With reference to EN 14372. Analysis was performed by GC/MS.	0.003	n.d.	-
DIDP (Di-isodecyl phthalate) (CAS No.: 26761-40-0)	%	With reference to EN 14372. Analysis was performed by GC/MS.	0.01	n.d.	-
DINP (Di-isononyl phthalate) (CAS No.: 28553-12-0)	%	With reference to EN 14372. Analysis was performed by GC/MS.	0.01	n.d.	-
DNOP (Di-n-octyl phthalate) (CAS No.: 117-84-0)	%	With reference to EN 14372. Analysis was performed by GC/MS.	0.003	n.d.	-
DBP (Dibutyl phthalate) (CAS No.: 84-74-2)	%	With reference to EN 14372. Analysis was performed by GC/MS.	0.003	n.d.	-
Perfluorooctane sulfonates (PFOS-Acid, Metal Salt, Amide)	mg/kg	With reference to US EPA 3550C: 2007. Analysis was performed by LC/MS.	10	n.d.	-
PFOA (CAS No.: 335-67-1)	mg/kg	With reference to US EPA 3550C: 2007. Analysis was performed by LC/MS.	10	n.d.	-
Polychlorinated Biphenyls (PCBs) (CAS No.: 1336-36-3)	mg/kg	With reference to US EPA 3540C method. Analysis was performed by GC/MS.	0.5	n.d.	-

Unless otherwise stated the results shown in this test report refer only to the sample(s) tested. This test report cannot be reproduced, except in full, without prior written permission of the Company. 除非另有說明，此報告中顯示之測試結果僅針對所檢之樣品。本報告未經本公司同意，不得部分複製。 This document is issued by the Company subject to its General Conditions of Service printed overleaf, available on request or accessible at www.sgs.com/terms_and_conditions.htm and, for electronic format documents, subject to Terms and Conditions for Electronic Documents at www.sgs.com/en/Terms-and-Conditions/Terms-e-Document. Attention is drawn to the limitation of liability, indemnification and jurisdiction issues defined therein. Any holder of this document is advised that information contained hereon reflects the Company's findings at the time of its intervention only and within the limits of Client's instructions, if any. The Company's sole responsibility is to its Client and this document does not exonerate parties to a transaction from exercising all their rights and obligations under the transaction documents. This document cannot be reproduced except in full, without prior written approval of the Company. Any unauthorized alteration, forgery or falsification of the content or appearance of this document is unlawful and offenders may be prosecuted to the fullest extent of the law.

Test Report

No. : CE/2013/13196 Date : 2013/01/22 Page : 3 of 29

CERAMTEC GMBH

GESCHAFTSBEREICH MULTIFUNKTIONSKERAMIK, LUITPOLDSTRASSE 15, 91207 LAUF



Test Item(s)	Unit	Method	MDL	Result	Limit
				No.1	
Polychlorinated Terphenyls (PCTs)	mg/kg	With reference to US EPA 3540C method. Analysis was performed by GC/MS.	0.5	n.d.	-
Polychlorinated Naphthalene (PCNs)	mg/kg	With reference to US EPA 3540C method. Analysis was performed by GC/MS.	5	n.d.	-
Alkanes, C10-13, chloro (Short Chain Chlorinated Paraffins) (CAS No.: 85535-84-8)	mg/kg	With reference to US EPA 3540C method. Analysis was performed by GC/MS.	100	n.d.	-
PVC	**	Analysis was performed by FTIR and FLAME Test.	-	Negative	-
Formaldehyde (CAS No.: 50-00-0)	mg/kg	With reference to ISO 17226-1(2008). Analysis was performed by HPLC/DAD.	3	n.d.	-
Monomethyl dibromodiphenyl methane (DBBT)	mg/kg	With reference to US EPA 8270D method. Analysis was performed by GC/MS.	0.5	n.d.	-
Monomethyl dichlorodiphenyl methane (Ugilec121)	mg/kg	With reference to US EPA 8270D method. Analysis was performed by GC/MS.	0.5	n.d.	-
Monomethyl tetrachlorodiphenyl methane (Ugilec141)	mg/kg	With reference to US EPA 8270D method. Analysis was performed by GC/MS.	0.5	n.d.	-
Halogen					
Halogen-Fluorine (F) (CAS No.: 14762-94-8)	mg/kg	With reference to BS EN 14582:2007. Analysis was performed by IC.	50	n.d.	-
Halogen-Chlorine (Cl) (CAS No.: 22537-15-1)	mg/kg		50	n.d.	-
Halogen-Bromine (Br) (CAS No.: 10097-32-2)	mg/kg		50	n.d.	-
Halogen-Iodine (I) (CAS No.: 14362-44-8)	mg/kg		50	n.d.	-
Organic-tin compounds					
Tributyl Tin (TBT)	mg/kg	With reference to DIN 38407-13.	0.03	n.d.	-
Triphenyl Tin (TphT)	mg/kg	Analysis was performed by GC/FPD.	0.03	n.d.	-

Unless otherwise stated the results shown in this test report refer only to the sample(s) tested. This test report cannot be reproduced, except in full, without prior written permission of the Company. 除非另有說明，此報告中顯示之測試結果僅針對所測試之樣品。本報告未經本公司許可，不得部分複製。
This document is issued by the Company subject to its General Conditions of Service printed overleaf, available on request or accessible at www.sgs.com/terms_and_conditions.htm and, for electronic format documents, subject to Terms and Conditions for Electronic Documents at www.sgs.com/en/Terms-and-Conditions/Terms-e-Documents. Attention is drawn to the limitation of liability, indemnification and jurisdiction issues defined therein. Any holder of this document is advised that information contained hereon reflects the Company's findings at the time of its intervention only and within the limits of Client's instructions, if any. The Company's sole responsibility is to its Client and this document does not exonerate parties to a transaction from exercising all their rights and obligations under the transaction documents. This document cannot be reproduced except in full, without prior written approval of the Company. Any unauthorized alteration, forgery or falsification of the content or appearance of this document is unlawful and offenders may be prosecuted to the fullest extent of the law.

Test Report

No.: CE/2013/13196 Date: 2013/01/22 Page: 4 of 29

CERAMTEC GMBH

GESCHAFTSBEREICH MULTIFUNKTIONSKERAMIK, LUITPOLDSTRASSE 15, 91207 LAUF



Test Item(s)	Unit	Method	MDL	Result	Limit
				No.1	
Asbestos					
Actinolite (CAS No.: 77536-66-4)	%	With reference to EPA 600/R-93/116 method. Analysis was performed by Stereo Microscope (SM), Dispersion Staining Polarized Light Microscope (DS-PLM) and X-ray Diffraction Spectrometer (XRD).	-	Negative	-
Amosite (CAS No.: 12172-73-5)	%		-	Negative	-
Anthophyllite (CAS No.: 77536-67-5)	%		-	Negative	-
Chrysotile (CAS No.: 12001-29-5)	%		-	Negative	-
Crocidolite (CAS No.: 12001-28-4)	%		-	Negative	-
Tremolite (CAS No.: 77536-68-6)	%		-	Negative	-
AZO					
1): 4-AMINODIPHENYL (CAS No.: 92-67-1)	mg/kg	With reference to LFGB 82.02-2. Analysis was performed by GC/MS.	3	n.d.	-
2): BENZIDINE (CAS No.: 92-87-5)	mg/kg	With reference to LFGB 82.02-2. Analysis was performed by GC/MS.	3	n.d.	-
3): 4-CHLORO-O-TOLUIDINE (CAS No.: 95-69-2)	mg/kg	With reference to LFGB 82.02-2. Analysis was performed by GC/MS.	3	n.d.	-
4): 2-NAPHTHYLAMINE (CAS No.: 91-59-8)	mg/kg	With reference to LFGB 82.02-2. Analysis was performed by GC/MS.	3	n.d.	-
5): O-AMINOAZOTOLUENE (CAS No.: 97-56-3)	mg/kg	With reference to LFGB 82.02-2. Analysis was performed by GC/MS.	3	n.d.	-
6): 2-AMINO-4-NITROTOLUENE (CAS No.: 99-55-8)	mg/kg	With reference to LFGB 82.02-2. Analysis was performed by GC/MS.	3	n.d.	-
7): P-CHLOROANILINE (CAS No.: 106-47-8)	mg/kg	With reference to LFGB 82.02-2. Analysis was performed by GC/MS.	3	n.d.	-
8): 2,4-DIAMINOANISOLE (CAS No.: 615-05-4)	mg/kg	With reference to LFGB 82.02-2. Analysis was performed by GC/MS.	3	n.d.	-
9): 4,4'-DIAMINODIPHENYLMETHANE (CAS No.: 101-77-9)	mg/kg	With reference to LFGB 82.02-2. Analysis was performed by GC/MS.	3	n.d.	-
10): 3,3'-DICHLOROBENZIDINE (CAS No.: 91-94-1)	mg/kg	With reference to LFGB 82.02-2. Analysis was performed by GC/MS.	3	n.d.	-
11): 3,3'-DIMETHOXYBENZIDINE (CAS No.: 119-90-4)	mg/kg	With reference to LFGB 82.02-2. Analysis was performed by GC/MS.	3	n.d.	-
12): 3,3'-DIMETHYLBENZIDINE (CAS No.: 119-93-7)	mg/kg	With reference to LFGB 82.02-2. Analysis was performed by GC/MS.	3	n.d.	-

Unless otherwise stated the results shown in this test report refer only to the sample(s) tested. This test report cannot be reproduced, except in full, without prior written permission of the Company. 除非另有說明，此報告中顯示之測試結果僅針對所檢之樣品。本報告未經本公司書面許可，不得部分複製。
This document is issued by the Company subject to its General Conditions of Service printed overleaf, available on request or accessible at www.sgs.com/terms_and_conditions.htm and, for electronic format documents, subject to Terms and Conditions for Electronic Documents at www.sgs.com/en/Terms-and-Conditions/Terms-e-Documents. Attention is drawn to the limitation of liability, indemnification and jurisdiction issues defined therein. Any holder of this document is advised that information contained hereon reflects the Company's findings at the time of its intervention only and within the limits of Client's instructions, if any. The Company's sole responsibility is to its Client and this document does not exonerate parties to a transaction from exercising all their rights and obligations under the transaction documents. This document cannot be reproduced except in full, without prior written approval of the Company. Any unauthorized alteration, forgery or falsification of the content or appearance of this document is unlawful and offenders may be prosecuted to the fullest extent of the law.

Test Report

No. : CE/2013/13196 Date : 2013/01/22 Page : 5 of 29

CERAMTEC GMBH

GESCHAFTSBEREICH MULTIFUNKTIONSKERAMIK, LUITPOLDSTRASSE 15, 91207 LAUF



Test Item(s)	Unit	Method	MDL	Result	Limit
				No.1	
13): 3,3'-DIMETHYL-4,4'-DIAMINODIPHENYLMETHANE (CAS No.: 838-88-0)	mg/kg	With reference to LFGB 82.02-2. Analysis was performed by GC/MS.	3	n.d.	-
14): P-CRESIDINE (2-METHOXY-5-METHYLANILINE) (CAS No.: 120-71-8)	mg/kg	With reference to LFGB 82.02-2. Analysis was performed by GC/MS.	3	n.d.	-
15): 4,4'-METHYLENE-BIS-(2-CHLOROANILINE) (CAS No.: 101-14-4)	mg/kg	With reference to LFGB 82.02-2. Analysis was performed by GC/MS.	3	n.d.	-
16): 4,4'-OXYDIANILINE (CAS No.: 101-80-4)	mg/kg	With reference to LFGB 82.02-2. Analysis was performed by GC/MS.	3	n.d.	-
17): 4,4'-THIODIANILINE (CAS No.: 139-65-1)	mg/kg	With reference to LFGB 82.02-2. Analysis was performed by GC/MS.	3	n.d.	-
18): O-TOLUIDINE (CAS No.: 95-53-4)	mg/kg	With reference to LFGB 82.02-2. Analysis was performed by GC/MS.	3	n.d.	-
19): 2,4-TOLUYLENEDIAMINE (CAS No.: 95-80-7)	mg/kg	With reference to LFGB 82.02-2. Analysis was performed by GC/MS.	3	n.d.	-
20): 2,4,5-TRIMETHYLANILINE (CAS No.: 137-17-7)	mg/kg	With reference to LFGB 82.02-2. Analysis was performed by GC/MS.	3	n.d.	-
21): O-ANISIDINE (CAS No.: 90-04-0)	mg/kg	With reference to LFGB 82.02-2. Analysis was performed by GC/MS.	3	n.d.	-
22): P-AMINOAZOBENZENE (CAS No.: 60-09-3)	mg/kg	With reference to LFGB 82.02-2. Analysis was performed by GC/MS.	3	n.d.	-
23): 2,4-XYLIDINE (CAS No.: 95-68-1)	mg/kg	With reference to LFGB 82.02-2. Analysis was performed by GC/MS.	3	n.d.	-
24): 2,6-XYLIDINE (CAS No.: 87-62-7)	mg/kg	With reference to LFGB 82.02-2. Analysis was performed by GC/MS.	3	n.d.	-
CFC's (Chlorofluorocarbons)					
Group I					
Chlorofluorocarbon-11 (CAS No.: 75-69-4)	mg/kg	With reference to US EPA 5021 method. Analysis was performed by GC/MS.	1	n.d.	-
Chlorofluorocarbon-12 (CAS No.: 75-71-8)	mg/kg	With reference to US EPA 5021 method. Analysis was performed by GC/MS.	1	n.d.	-

Unless otherwise stated the results shown in this test report refer only to the sample(s) tested. This test report cannot be reproduced, except in full, without prior written permission of the Company. 除非另有說明，此報告中所有測試之結果皆針對本公司客戶提供之樣品。本報告不得被複製，除非事先獲得SGS之書面許可。本報告之複製或修改，必須事先獲得SGS之書面許可。This document is issued by the Company subject to its General Conditions of Service printed overleaf, available on request or accessible at www.sgs.com/terms_and_conditions.htm and, for electronic format documents, subject to Terms and Conditions for Electronic Documents at www.sgs.com/en/Terms-and-Conditions/Terms-e-Documents. Attention is drawn to the limitation of liability, indemnification and jurisdiction issues defined therein. Any holder of this document is advised that information contained hereon reflects the Company's findings at the time of its intervention only and within the limits of Client's instructions, if any. The Company's sole responsibility is to its Client and this document does not exonerate parties to a transaction from exercising all their rights and obligations under the transaction documents. This document cannot be reproduced except in full, without prior written approval of the Company. Any unauthorized alteration, forgery or falsification of the content or appearance of this document is unlawful and offenders may be prosecuted to the fullest extent of the law.

Test Report

No. : CE/2013/13196 Date : 2013/01/22 Page : 6 of 29

CERAMTEC GMBH

GESCHAFTSBEREICH MULTIFUNKTIONSKERAMIK, LUITPOLDSTRASSE 15, 91207 LAUF



Test Item(s)	Unit	Method	MDL	Result	Limit
				No.1	
Chlorofluorocarbon-113 (CAS No.: 76-13-1)	mg/kg	With reference to US EPA 5021 method. Analysis was performed by GC/MS.	1	n.d.	-
Chlorofluorocarbon-114 (CAS No.: 76-14-2)	mg/kg	With reference to US EPA 5021 method. Analysis was performed by GC/MS.	1	n.d.	-
Chlorofluorocarbon-115 (CAS No.: 76-15-3)	mg/kg	With reference to US EPA 5021 method. Analysis was performed by GC/MS.	1	n.d.	-
Group III					
Chlorofluorocarbon-13 (CAS No.: 75-72-9)	mg/kg	With reference to US EPA 5021 method. Analysis was performed by GC/MS.	1	n.d.	-
Chlorofluorocarbon-111 (CAS No.: 354-56-3)	mg/kg	With reference to US EPA 5021 method. Analysis was performed by GC/MS.	1	n.d.	-
Chlorofluorocarbon-112 (CAS No.: 76-12-0)	mg/kg	With reference to US EPA 5021 method. Analysis was performed by GC/MS.	1	n.d.	-
Chlorofluorocarbon-211 (CAS No.: 422-78-6)	mg/kg	With reference to US EPA 5021 method. Analysis was performed by GC/MS.	1	n.d.	-
Chlorofluorocarbon-212 (CAS No.: 3182-26-1)	mg/kg	With reference to US EPA 5021 method. Analysis was performed by GC/MS.	1	n.d.	-
Chlorofluorocarbon-213 (CAS No.: 2354-06-5)	mg/kg	With reference to US EPA 5021 method. Analysis was performed by GC/MS.	1	n.d.	-
Chlorofluorocarbon-214 (CAS No.: 29255-31-0)	mg/kg	With reference to US EPA 5021 method. Analysis was performed by GC/MS.	1	n.d.	-
Chlorofluorocarbon-215 (CAS No.: 4259-43-2)	mg/kg	With reference to US EPA 5021 method. Analysis was performed by GC/MS.	1	n.d.	-

Unless otherwise stated the results shown in this test report refer only to the sample(s) tested. This test report cannot be reproduced, except in full, without prior written permission of the Company. 除非另有說明，否則本報告中顯示之結果僅針對所檢樣品而言。未經本公司書面許可，不得部分複製。
This document is issued by the Company subject to its General Conditions of Service printed overleaf, available on request or accessible at www.sgs.com/terms_and_conditions.htm and, for electronic format documents, subject to Terms and Conditions for Electronic Documents at www.sgs.com/en/Terms-and-Conditions/Terms-e-Document. Attention is drawn to the limitation of liability, indemnification and jurisdiction issues defined therein. Any holder of this document is advised that information contained hereon reflects the Company's findings at the time of its intervention only and within the limits of Client's instructions, if any. The Company's sole responsibility is to its Client and this document does not exonerate parties to a transaction from exercising all their rights and obligations under the transaction documents. This document cannot be reproduced except in full, without prior written approval of the Company. Any unauthorized alteration, forgery or falsification of the content or appearance of this document is unlawful and offenders may be prosecuted to the fullest extent of the law.

Test Report

No. : CE/2013/13196 Date : 2013/01/22 Page : 7 of 29

CERAMTEC GMBH

GESCHAFTSBEREICH MULTIFUNKTIONSKERAMIK, LUITPOLDSTRASSE 15, 91207 LAUF



Test Item(s)	Unit	Method	MDL	Result	Limit
				No.1	
Chlorofluorocarbon-216 (CAS No.: 661-97-2)	mg/kg	With reference to US EPA 5021 method. Analysis was performed by GC/MS.	1	n.d.	-
Chlorofluorocarbon-217 (CAS No.: 422-86-6)	mg/kg	With reference to US EPA 5021 method. Analysis was performed by GC/MS.	1	n.d.	-
HCFCs (Hydrochlorofluorocarbons)					
HCFC-21 (CAS No.: 75-43-4)	mg/kg	With reference to US EPA 5021 method. Analysis was performed by GC/MS.	1	n.d.	-
HCFC-22 (CAS No.: 75-45-6)	mg/kg	With reference to US EPA 5021 method. Analysis was performed by GC/MS.	1	n.d.	-
HCFC-31 (CAS No.: 593-70-4)	mg/kg	With reference to US EPA 5021 method. Analysis was performed by GC/MS.	1	n.d.	-
HCFC-121 (CAS No.: 354-14-3)	mg/kg	With reference to US EPA 5021 method. Analysis was performed by GC/MS.	1	n.d.	-
HCFC-122 (CAS No.: 354-21-2)	mg/kg	With reference to US EPA 5021 method. Analysis was performed by GC/MS.	1	n.d.	-
HCFC-123 (CAS No.: 306-83-2)	mg/kg	With reference to US EPA 5021 method. Analysis was performed by GC/MS.	1	n.d.	-
HCFC-124 (CAS No.: 2837-89-0)	mg/kg	With reference to US EPA 5021 method. Analysis was performed by GC/MS.	1	n.d.	-
HCFC-131 (CAS No.: 359-28-4)	mg/kg	With reference to US EPA 5021 method. Analysis was performed by GC/MS.	1	n.d.	-
HCFC-132b (CAS No.: 1649-08-7)	mg/kg	With reference to US EPA 5021 method. Analysis was performed by GC/MS.	1	n.d.	-

Unless otherwise stated the results shown in this test report refer only to the sample(s) tested. This test report cannot be reproduced, except in full, without prior written permission of the Company. 除非另有說明，此報告書之測試結果僅針對送檢之樣品。未經本公司書面許可，不得部分複製。
This document is issued by the Company subject to its General Conditions of Service printed overleaf, available on request or accessible at www.sgs.com/terms_and_conditions.htm and, for electronic format documents, subject to Terms and Conditions for Electronic Documents at www.sgs.com/en/Terms-and-Conditions/Terms-e-Document. Attention is drawn to the limitation of liability, indemnification and jurisdiction issues defined therein. Any holder of this document is advised that information contained hereon reflects the Company's findings at the time of its intervention only and within the limits of Client's instructions, if any. The Company's sole responsibility is to its Client and this document does not exonerate parties to a transaction from exercising all their rights and obligations under the transaction documents. This document cannot be reproduced except in full, without prior written approval of the Company. Any unauthorized alteration, forgery or falsification of the content or appearance of this document is unlawful and offenders may be prosecuted to the fullest extent of the law.

Test Report

No. : CE/2013/13196 Date : 2013/01/22 Page : 8 of 29

CERAMTEC GMBH

GESCHAFTSBEREICH MULTIFUNKTIONSKERAMIK, LUITPOLDSTRABE 15, 91207 LAUF



Test Item(s)	Unit	Method	MDL	Result	Limit
				No.1	
HCFC-133a (CAS No.: 75-88-7)	mg/kg	With reference to US EPA 5021 method. Analysis was performed by GC/MS.	1	n.d.	-
HCFC-141b (CAS No.: 1717-00-6)	mg/kg	With reference to US EPA 5021 method. Analysis was performed by GC/MS.	1	n.d.	-
HCFC-142b (CAS No.: 75-68-3)	mg/kg	With reference to US EPA 5021 method. Analysis was performed by GC/MS.	1	n.d.	-
HCFC-221 (CAS No.: 422-26-4)	mg/kg	With reference to US EPA 5021 method. Analysis was performed by GC/MS.	1	n.d.	-
HCFC-222 (CAS No.: 422-49-1)	mg/kg	With reference to US EPA 5021 method. Analysis was performed by GC/MS.	1	n.d.	-
HCFC-223 (CAS No.: 422-52-6)	mg/kg	With reference to US EPA 5021 method. Analysis was performed by GC/MS.	1	n.d.	-
HCFC-224 (CAS No.: 422-54-8)	mg/kg	With reference to US EPA 5021 method. Analysis was performed by GC/MS.	1	n.d.	-
HCFC-225ca (CAS No.: 422-56-0)	mg/kg	With reference to US EPA 5021 method. Analysis was performed by GC/MS.	1	n.d.	-
HCFC-225cb (CAS No.: 507-55-1)	mg/kg	With reference to US EPA 5021 method. Analysis was performed by GC/MS.	1	n.d.	-
HCFC-226 (CAS No.: 431-87-8)	mg/kg	With reference to US EPA 5021 method. Analysis was performed by GC/MS.	1	n.d.	-
HCFC-231 (CAS No.: 421-94-3)	mg/kg	With reference to US EPA 5021 method. Analysis was performed by GC/MS.	1	n.d.	-
HCFC-232 (CAS No.: 460-89-9)	mg/kg	With reference to US EPA 5021 method. Analysis was performed by GC/MS.	1	n.d.	-

Unless otherwise stated the results shown in this test report refer only to the sample(s) tested. This test report cannot be reproduced, except in full, without prior written permission of the Company. 除非另有說明，此報告之測試結果僅針對樣品負責。本報告未經本公司許可，不得部分複製。
This document is issued by the Company subject to its General Conditions of Service printed overleaf, available on request or accessible at www.sgs.com/terms_and_conditions.htm and, for electronic format documents, subject to Terms and Conditions for Electronic Documents at www.sgs.com/en/Terms-and-Conditions/Terms-e-Documents. Attention is drawn to the limitation of liability, indemnification and jurisdiction issues defined therein. Any holder of this document is advised that information contained hereon reflects the Company's findings at the time of its intervention only and within the limits of Client's instructions, if any. The Company's sole responsibility is to its Client and this document does not exonerate parties to a transaction from exercising all their rights and obligations under the transaction documents. This document cannot be reproduced except in full, without prior written approval of the Company. Any unauthorized alteration, forgery or falsification of the content or appearance of this document is unlawful and offenders may be prosecuted to the fullest extent of the law.

Test Report

No. : CE/2013/13196 Date : 2013/01/22 Page : 9 of 29

CERAMTEC GMBH

GESCHAFTSBEREICH MULTIFUNKTIONSKERAMIK, LUITPOLDSTRABE 15, 91207 LAUF



Test Item(s)	Unit	Method	MDL	Result	Limit
				No.1	
HCFC-233 (CAS No.: 7125-84-0)	mg/kg	With reference to US EPA 5021 method. Analysis was performed by GC/MS.	1	n.d.	-
HCFC-234 (CAS No.: 425-94-5)	mg/kg	With reference to US EPA 5021 method. Analysis was performed by GC/MS.	1	n.d.	-
HCFC-235 (CAS No.: 460-92-4)	mg/kg	With reference to US EPA 5021 method. Analysis was performed by GC/MS.	1	n.d.	-
HCFC-241 (CAS No.: 666-27-3)	mg/kg	With reference to US EPA 5021 method. Analysis was performed by GC/MS.	1	n.d.	-
HCFC-242 (CAS No.: 460-63-9)	mg/kg	With reference to US EPA 5021 method. Analysis was performed by GC/MS.	1	n.d.	-
HCFC-243 (CAS No.: 460-69-5)	mg/kg	With reference to US EPA 5021 method. Analysis was performed by GC/MS.	1	n.d.	-
HCFC-244	mg/kg	With reference to US EPA 5021 method. Analysis was performed by GC/MS.	1	n.d.	-
HCFC-251 (CAS No.: 421-41-0)	mg/kg	With reference to US EPA 5021 method. Analysis was performed by GC/MS.	1	n.d.	-
HCFC-252 (CAS No.: 819-00-1)	mg/kg	With reference to US EPA 5021 method. Analysis was performed by GC/MS.	1	n.d.	-
HCFC-253 (CAS No.: 460-35-5)	mg/kg	With reference to US EPA 5021 method. Analysis was performed by GC/MS.	1	n.d.	-
HCFC-261 (CAS No.: 420-97-3)	mg/kg	With reference to US EPA 5021 method. Analysis was performed by GC/MS.	1	n.d.	-
HCFC-262 (CAS No.: 421-02-03)	mg/kg	With reference to US EPA 5021 method. Analysis was performed by GC/MS.	1	n.d.	-

Unless otherwise stated the results shown in this test report refer only to the sample(s) tested. This test report cannot be reproduced, except in full, without prior written permission of the Company. 除非另有說明，此測試報告的結果僅指樣品而言。未經本公司書面許可，不得部分複製。
This document is issued by the Company subject to its General Conditions of Service printed overleaf, available on request or accessible at www.sgs.com/terms_and_conditions.htm and, for electronic format documents, subject to Terms and Conditions for Electronic Documents at www.sgs.com/en/Terms-and-Conditions/Terms-e-Documents. Attention is drawn to the limitation of liability, indemnification and jurisdiction issues defined therein. Any holder of this document is advised that information contained hereon reflects the Company's findings at the time of its intervention only and within the limits of Client's instructions, if any. The Company's sole responsibility is to its Client and this document does not exonerate parties to a transaction from exercising all their rights and obligations under the transaction documents. This document cannot be reproduced except in full, without prior written approval of the Company. Any unauthorized alteration, forgery or falsification of the content or appearance of this document is unlawful and offenders may be prosecuted to the fullest extent of the law.

Test Report

No. : CE/2013/13196 Date : 2013/01/22 Page : 10 of 29

CERAMTEC GMBH

GESCHAFTSBEREICH MULTIFUNKTIONSKERAMIK, LUITPOLDSTRASSE 15, 91207 LAUF



Test Item(s)	Unit	Method	MDL	Result	Limit
				No.1	
HCFC-271 (CAS No.: 430-55-7)	mg/kg	With reference to US EPA 5021 method. Analysis was performed by GC/MS.	1	n.d.	-
Halons					
Halon-1211 (CAS No.: 353-59-3)	mg/kg	With reference to US EPA 5021 method. Analysis was performed by GC/MS.	1	n.d.	-
Halon-1301 (CAS No.: 75-63-8)	mg/kg		1	n.d.	-
Halon-2402 (CAS No.: 124-73-2)	mg/kg		1	n.d.	-
CHCs (Chlorinate hydrocarbon)					
1,1,1,2-Tetrachloroethane (CAS No.: 630-20-6)	mg/kg	With reference to US EPA 5021 method. Analysis was performed by GC/MS.	1	n.d.	-
1,1,1-Trichloroethane (CAS No.: 71-55-6)	mg/kg	With reference to US EPA 5021 method. Analysis was performed by GC/MS.	1	n.d.	-
1,1,2,2-Tetrachloroethane (CAS No.: 79-34-5)	mg/kg	With reference to US EPA 5021 method. Analysis was performed by GC/MS.	1	n.d.	-
1,1,2-Trichloroethane (CAS No.: 79-00-5)	mg/kg	With reference to US EPA 5021 method. Analysis was performed by GC/MS.	1	n.d.	-
1,1-Dichloroethane (CAS No.: 75-34-3)	mg/kg	With reference to US EPA 5021 method. Analysis was performed by GC/MS.	1	n.d.	-
1,1-Dichloroethene (CAS No.: 75-35-4)	mg/kg	With reference to US EPA 5021 method. Analysis was performed by GC/MS.	1	n.d.	-
1,1-Dichloropropene (CAS No.: 563-58-6)	mg/kg	With reference to US EPA 5021 method. Analysis was performed by GC/MS.	1	n.d.	-
1,2,3-Trichloropropane (CAS No.: 96-18-4)	mg/kg	With reference to US EPA 5021 method. Analysis was performed by GC/MS.	1	n.d.	-
1,2-Dichloroethane (CAS No.: 107-06-2)	mg/kg	With reference to US EPA 5021 method. Analysis was performed by GC/MS.	1	n.d.	-

Unless otherwise stated the results shown in this test report refer only to the sample(s) tested. This test report cannot be reproduced, except in full, without prior written permission of the Company. 除非另有說明，此報告之測試結果僅針對送檢之樣品負責。未經本公司書面許可，本報告不得複製。
This document is issued by the Company subject to its General Conditions of Service printed overleaf, available on request or accessible at www.sgs.com/terms_and_conditions.htm.
This document is issued by the Company subject to its General Conditions of Service printed overleaf, available on request or accessible at www.sgs.com/en/Terms-and-Conditions/Terms-e-Documents. Attention is drawn to the and, for electronic format documents, subject to Terms and Conditions for Electronic Documents at www.sgs.com/en/Terms-and-Conditions/Terms-e-Documents. Attention is drawn to the limitation of liability, indemnification and jurisdiction issues defined therein. Any holder of this document is advised that information contained hereon reflects the Company's findings at the time of its intervention only and within the limits of Client's instructions, if any. The Company's sole responsibility is to its Client and this document does not exonerate parties to a transaction from exercising all their rights and obligations under the transaction documents. This document cannot be reproduced except in full, without prior written approval of the Company. Any unauthorized alteration, forgery or falsification of the content or appearance of this document is unlawful and offenders may be prosecuted to the fullest extent of the law.

Test Report

No. : CE/2013/13196 Date : 2013/01/22 Page : 11 of 29

CERAMTEC GMBH

GESCHAFTSBEREICH MULTIFUNKTIONSKERAMIK, LUITPOLDSTRASSE 15, 91207 LAUF



Test Item(s)	Unit	Method	MDL	Result	Limit
				No.1	
1,2-Dichloropropane (CAS No.: 78-87-5)	mg/kg	With reference to US EPA 5021 method. Analysis was performed by GC/MS.	1	n.d.	-
1,3-Dichloropropane (CAS No.: 142-28-9)	mg/kg	With reference to US EPA 5021 method. Analysis was performed by GC/MS.	1	n.d.	-
2,2-Dichloropropane (CAS No.: 594-20-7)	mg/kg	With reference to US EPA 5021 method. Analysis was performed by GC/MS.	1	n.d.	-
Carbon tetrachloride (CAS No.: 56-23-5)	mg/kg	With reference to US EPA 5021 method. Analysis was performed by GC/MS.	1	n.d.	-
Chloroethane (CAS No.: 75-00-3)	mg/kg	With reference to US EPA 5021 method. Analysis was performed by GC/MS.	1	n.d.	-
Chloroform (CAS No.: 67-66-3)	mg/kg	With reference to US EPA 5021 method. Analysis was performed by GC/MS.	1	n.d.	-
Chloromethane (CAS No.: 74-87-3)	mg/kg	With reference to US EPA 5021 method. Analysis was performed by GC/MS.	1	n.d.	-
cis-1,2-Dichloroethene (CAS No.: 156-59-2)	mg/kg	With reference to US EPA 5021 method. Analysis was performed by GC/MS.	1	n.d.	-
cis-1,3-Dichloropropene (CAS No.: 10061-01-5)	mg/kg	With reference to US EPA 5021 method. Analysis was performed by GC/MS.	1	n.d.	-
Hexachlorobutadiene (CAS No.: 87-68-3)	mg/kg	With reference to US EPA 5021 method. Analysis was performed by GC/MS.	1	n.d.	-
Methylene Chloride (CAS No.: 75-09-2)	mg/kg	With reference to US EPA 5021 method. Analysis was performed by GC/MS.	1	n.d.	-
Tetrachloroethene (CAS No.: 127-18-4)	mg/kg	With reference to US EPA 5021 method. Analysis was performed by GC/MS.	1	n.d.	-

Unless otherwise stated the results shown in this test report refer only to the sample(s) tested. This test report cannot be reproduced, except in full, without prior written permission of the Company. 除非另有說明，此報告結果僅對測試之樣品負責。本報告未經本公司書面許可，不得部分複製。
This document is issued by the Company subject to its General Conditions of Service printed overleaf, available on request or accessible at www.sgs.com/terms_and_conditions.htm and, for electronic format documents, subject to Terms and Conditions for Electronic Documents at www.sgs.com/en/Terms-and-Conditions/Terms-e-Document. Attention is drawn to the limitation of liability, indemnification and jurisdiction issues defined therein. Any holder of this document is advised that information contained hereon reflects the Company's findings at the time of its intervention only and within the limits of Client's instructions, if any. The Company's sole responsibility is to its Client and this document does not exonerate parties to a transaction from exercising all their rights and obligations under the transaction documents. This document cannot be reproduced except in full, without prior written approval of the Company. Any unauthorized alteration, forgery or falsification of the content or appearance of this document is unlawful and offenders may be prosecuted to the fullest extent of the law.

Test Report

No. : CE/2013/13196 Date : 2013/01/22 Page : 12 of 29

CERAMTEC GMBH

GESCHAFTSBEREICH MULTIFUNKTIONSKERAMIK, LUITPOLDSTRASSE 15, 91207 LAUF



Test Item(s)	Unit	Method	MDL	Result	Limit
				No.1	
trans-1,2-Dichloroethene (CAS No.: 156-60-5)	mg/kg	With reference to US EPA 5021 method. Analysis was performed by GC/MS.	1	n.d.	-
trans-1,3-Dichloropropene (CAS No.: 10061-02-6)	mg/kg	With reference to US EPA 5021 method. Analysis was performed by GC/MS.	1	n.d.	-
Trichloroethylene (CAS No.: 79-01-6)	mg/kg	With reference to US EPA 5021 method. Analysis was performed by GC/MS.	1	n.d.	-
Sum of PBBs	mg/kg	With reference to IEC 62321: 2008 and performed by GC/MS.	-	n.d.	1000
Monobromobiphenyl	mg/kg		5	n.d.	-
Dibromobiphenyl	mg/kg		5	n.d.	-
Tribromobiphenyl	mg/kg		5	n.d.	-
Tetrabromobiphenyl	mg/kg		5	n.d.	-
Pentabromobiphenyl	mg/kg		5	n.d.	-
Hexabromobiphenyl	mg/kg		5	n.d.	-
Heptabromobiphenyl	mg/kg		5	n.d.	-
Octabromobiphenyl	mg/kg		5	n.d.	-
Nonabromobiphenyl	mg/kg		5	n.d.	-
Decabromobiphenyl	mg/kg		5	n.d.	-
Sum of PBDEs	mg/kg		-	n.d.	1000
Monobromodiphenyl ether	mg/kg		5	n.d.	-
Dibromodiphenyl ether	mg/kg		5	n.d.	-
Tribromodiphenyl ether	mg/kg		5	n.d.	-
Tetrabromodiphenyl ether	mg/kg		5	n.d.	-
Pentabromodiphenyl ether	mg/kg		5	n.d.	-
Hexabromodiphenyl ether	mg/kg		5	n.d.	-
Heptabromodiphenyl ether	mg/kg		5	n.d.	-
Octabromodiphenyl ether	mg/kg		5	n.d.	-
Nonabromodiphenyl ether	mg/kg		5	n.d.	-
Decabromodiphenyl ether	mg/kg		5	n.d.	-

Unless otherwise stated the results shown in this test report refer only to the sample(s) tested. This test report cannot be reproduced, except in full, without prior written permission of the Company. 除非另有說明，此測試結果僅對測試之樣品負責。未經本公司書面許可，不得部分複製。
This document is issued by the Company subject to its General Conditions of Service printed overleaf, available on request or accessible at www.sgs.com/terms_and_conditions.htm and, for electronic format documents, subject to Terms and Conditions for Electronic Documents at www.sgs.com/en/Terms-and-Conditions/Terms-e-Documents. Attention is drawn to the limitation of liability, indemnification and jurisdiction issues defined therein. Any holder of this document is advised that information contained hereon reflects the Company's findings at the time of its intervention only and within the limits of Client's instructions, if any. The Company's sole responsibility is to its Client and this document does not exonerate parties to a transaction from exercising all their rights and obligations under the transaction documents. This document cannot be reproduced except in full, without prior written approval of the Company. Any unauthorized alteration, forgery or falsification of the content or appearance of this document is unlawful and offenders may be prosecuted to the fullest extent of the law.

Test Report

No. : CE/2013/13196 Date : 2013/01/22 Page : 13 of 29

CERAMTEC GMBH

GESCHAFTSBEREICH MULTIFUNKTIONSKERAMIK, LUITPOLDSTRASSE 15, 91207 LAUF



Note :

1. mg/kg = ppm ; 0.1wt% = 1000ppm
2. n.d. = Not Detected
3. MDL = Method Detection Limit
4. " - " = Not Regulated
5. ** = Qualitative analysis (No Unit)
6. Negative = Undetectable / Positive = Detectable
7. Testing range of asbestos qualitative analysis is from less than 0.1% to 100%. The judgment criterion: asbestos fibers being found is shown as "Positive"; asbestos fibers not being found is shown as "Negative".

PFOS Reference Information : POPs - (EU) 757/2010

Outlawing PFOS as substances or preparations in concentrations above 0.001% (10ppm), in semi-finished products or articles or parts at a level above 0.1%(1000ppm), in textiles or other coated materials above 1µg/m².

Unless otherwise stated the results shown in this test report refer only to the sample(s) tested. This test report cannot be reproduced, except in full, without prior written permission of the Company.除另有註明外，此測試結果僅針對測試之樣品負責。本報告未經本公司許可，不可部分複製。

This document is issued by the Company subject to its General Conditions of Service printed overleaf, available on request or accessible at www.sgs.com/terms_and_conditions.htm and, for electronic format documents, subject to Terms and Conditions for Electronic Documents at www.sgs.com/en/Terms-and-Conditions/Terms-e-Document. Attention is drawn to the and, for electronic format documents, subject to Terms and Conditions for Electronic Documents at www.sgs.com/en/Terms-and-Conditions/Terms-e-Document. Attention is drawn to the limitation of liability, indemnification and jurisdiction issues defined therein. Any holder of this document is advised that information contained hereon reflects the Company's findings at the time of its intervention only and within the limits of Client's instructions, if any. The Company's sole responsibility is to its Client and this document does not exonerate parties to a transaction from exercising all their rights and obligations under the transaction documents. This document cannot be reproduced except in full, without prior written approval of the Company. Any unauthorized alteration, forgery or falsification of the content or appearance of this document is unlawful and offenders may be prosecuted to the fullest extent of the law.

SGS Taiwan Ltd
普特實驗科技股份有限公司

33, Wu Chuan Rd., New Taipei Industrial Park, New Taipei City, Taiwan / 台北市新莊區吳川路33號
 +886 (02) 2299 3279 / +886 (02) 2299 3237 www.sqs.tw

Member of the SGS Group

Test Report

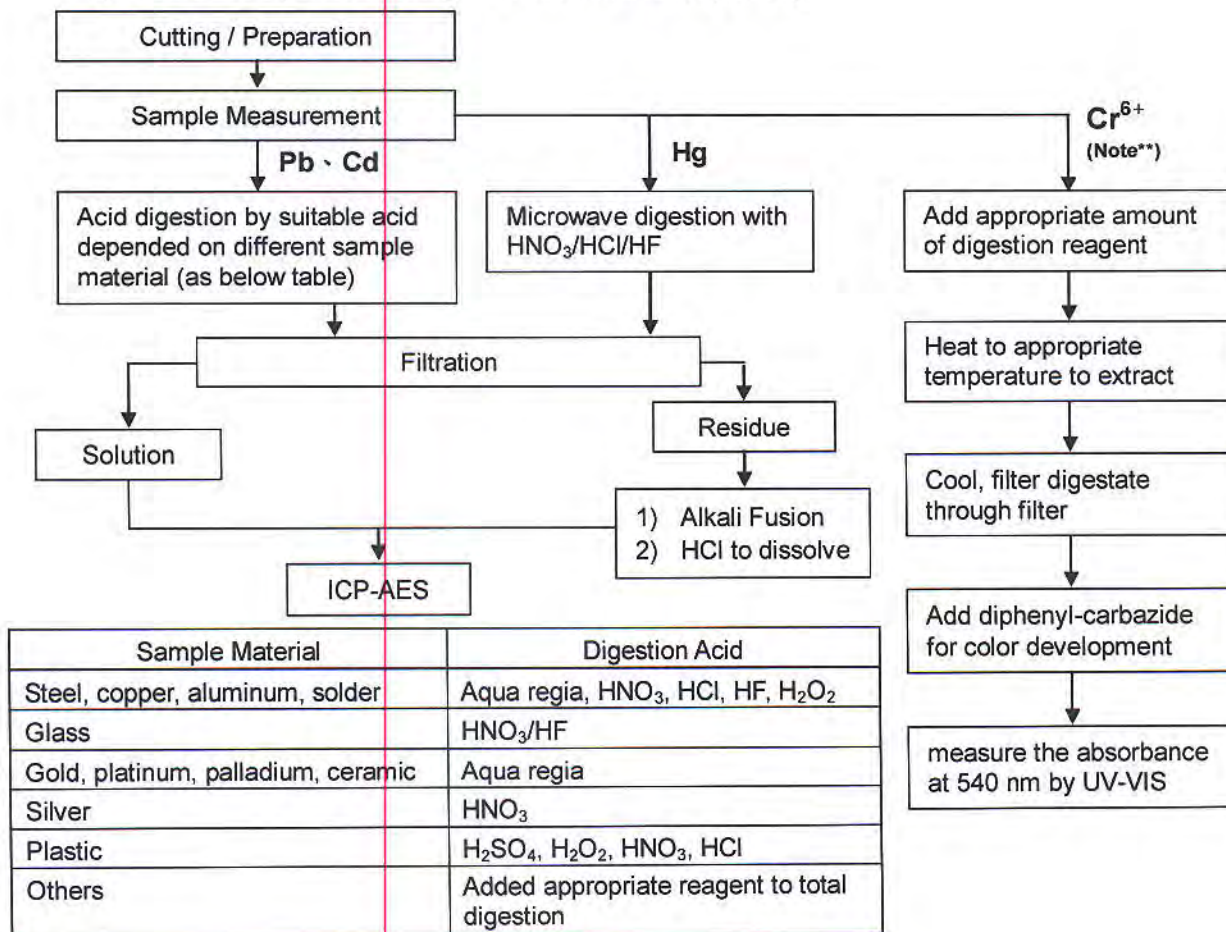
No. : CE/2013/13196 Date : 2013/01/22 Page : 14 of 29

CERAMTEC GMBH

GESCHAFTSBEREICH MULTIFUNKTIONSKERAMIK, LUITPOLDSTRASSE 15, 91207 LAUF



- 1) These samples were dissolved totally by pre-conditioning method according to below flow chart.
(Cr⁶⁺ test method excluded)
- 2) Name of the person who made measurement: Climbgreat Yang
- 3) Name of the person in charge of measurement: Troy Chang



Note :** (1) For non-metallic material, add alkaline digestion reagent and heat to 90~95 °C.
(2) For metallic material, add pure water and heat to boiling.

Unless otherwise stated the results shown in this test report refer only to the sample(s) tested. This test report cannot be reproduced, except in full, without prior written permission of the Company. 除非另有說明，此報告書只針對測試之樣品負責。未經本公司書面許可，不得重印複製。
This document is issued by the Company subject to its General Conditions of Service printed overleaf, available on request or accessible at www.sgs.com/terms_and_conditions.htm and, for electronic format documents, subject to Terms and Conditions for Electronic Documents at www.sgs.com/en/Terms-and-Conditions/Terms-e-Documents. Attention is drawn to the limitation of liability, indemnification and jurisdiction issues defined therein. Any holder of this document is advised that information contained hereon reflects the Company's findings at the time of its intervention only and within the limits of Client's instructions, if any. The Company's sole responsibility is to its Client and this document does not exonerate parties to a transaction from exercising all their rights and obligations under the transaction documents. This document cannot be reproduced except in full, without prior written approval of the Company. Any unauthorized alteration, forgery or falsification of the content or appearance of this document is unlawful and offenders may be prosecuted to the fullest extent of the law.

Test Report

No. : CE/2013/13196 Date : 2013/01/22 Page : 16 of 29

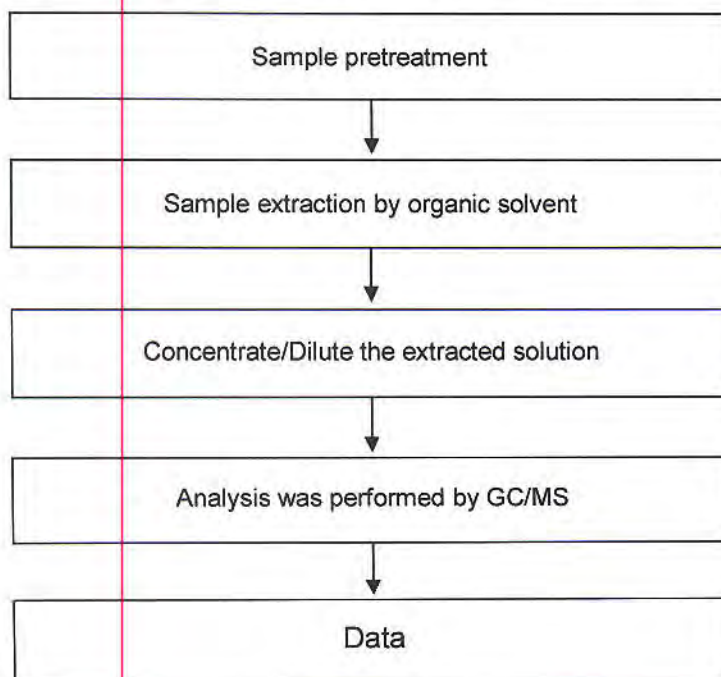
CERAMTEC GMBH

GESCHAFTSBEREICH MULTIFUNKTIONSKERAMIK, LUITPOLDSTRASSE 15, 91207 LAUF



PCTs analytical flow chart

- Name of the person who made measurement: Barry Tseng
- Name of the person in charge of measurement: Troy Chang



Unless otherwise stated the results shown in this test report refer only to the sample(s) tested. This test report cannot be reproduced, except in full, without prior written permission of the Company. 除非另有說明，此報告結果僅對測試之樣品負責，不得用於其他用途。本報告係由SGS Taiwan Ltd. 提供，其內容不得作為任何法律訴訟之依據。 This document is issued by the Company subject to its General Conditions of Service printed overleaf, available on request or accessible at www.sgs.com/terms_and_conditions.htm and, for electronic format documents, subject to Terms and Conditions for Electronic Documents at www.sgs.com/en/Terms-and-Conditions/Terms-e-Documents. Attention is drawn to the limitation of liability, indemnification and jurisdiction issues defined therein. Any holder of this document is advised that information contained hereon reflects the Company's findings at the time of its intervention only and within the limits of Client's instructions, if any. The Company's sole responsibility is to its Client and this document does not exonerate parties to a transaction from exercising all their rights and obligations under the transaction documents. This document cannot be reproduced except in full, without prior written approval of the Company. Any unauthorized alteration, forgery or falsification of the content or appearance of this document is unlawful and offenders may be prosecuted to the fullest extent of the law.

Test Report

No. : CE/2013/13196 Date : 2013/01/22 Page : 17 of 29

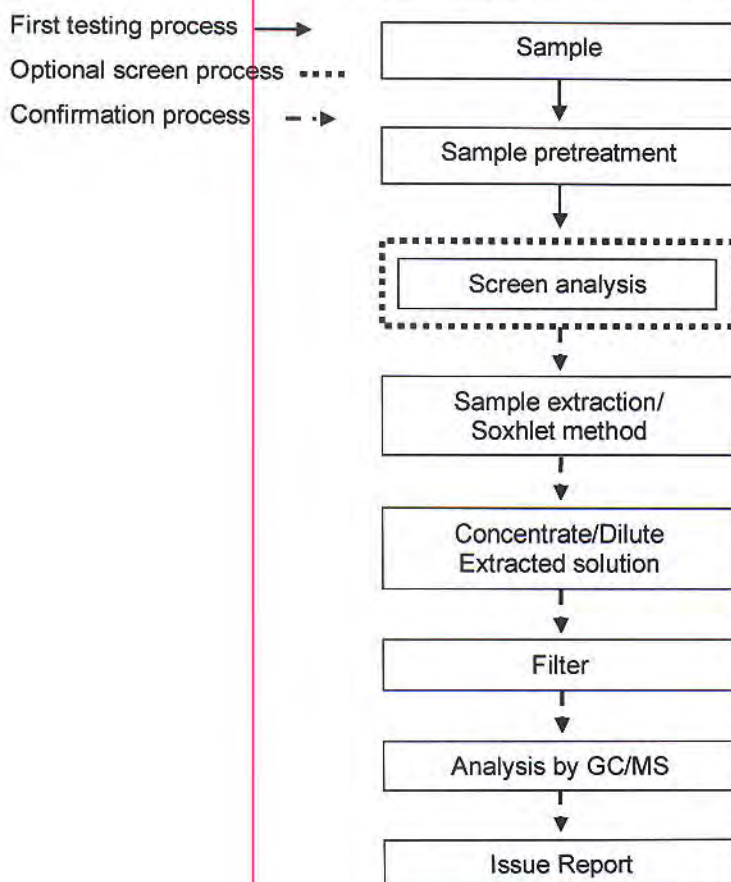
CERAMTEC GMBH

GESCHAFTSBEREICH MULTIFUNKTIONSKERAMIK, LUITPOLDSTRABE 15, 91207 LAUF



PBB/PBDE analytical FLOW CHART

- Name of the person who made measurement: Roman Wong
- Name of the person in charge of measurement: Troy Chang



Unless otherwise stated the results shown in this test report refer only to the sample(s) tested. This test report cannot be reproduced, except in full, without prior written permission of the Company. 除非另有說明，此報告結果僅對測試之樣品有效。本報告未經本公司書面許可，不得部分複製。
This document is issued by the Company subject to its General Conditions of Service printed overleaf, available on request or accessible at www.sgs.com/terms_and_conditions.htm and, for electronic format documents, subject to Terms and Conditions for Electronic Documents at www.sgs.com/en/Terms-and-Conditions/Terms-e-Document. Attention is drawn to the limitation of liability, indemnification and jurisdiction issues defined therein. Any holder of this document is advised that information contained hereon reflects the Company's findings at the time of its intervention only and within the limits of Client's instructions, if any. The Company's sole responsibility is to its Client and this document does not exonerate parties to a transaction from exercising all their rights and obligations under the transaction documents. This document cannot be reproduced except in full, without prior written approval of the Company. Any unauthorized alteration, forgery or falsification of the content or appearance of this document is unlawful and offenders may be prosecuted to the fullest extent of the law.

Test Report

No. : CE/2013/13196 Date : 2013/01/22 Page : 18 of 29

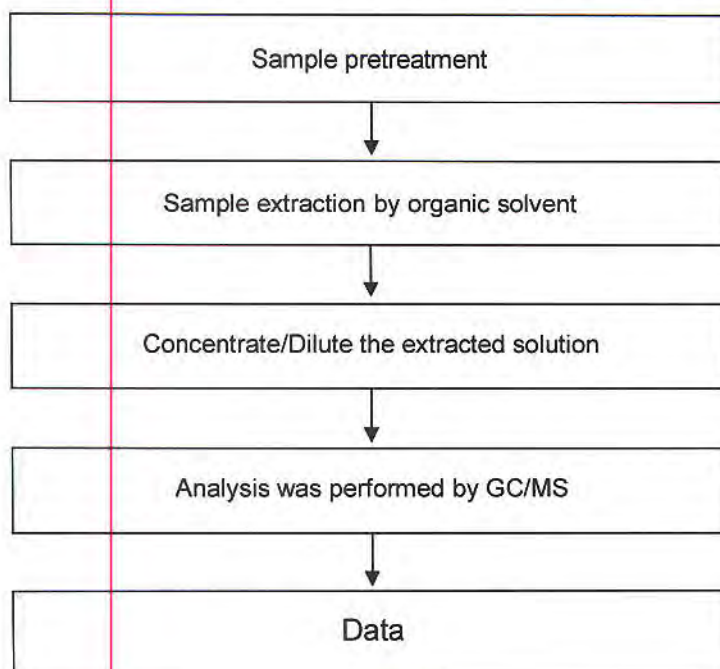
CERAMTEC GMBH

GESCHAFTSBEREICH MULTIFUNKTIONSKERAMIK, LUITPOLDSTRABE 15, 91207 LAUF



PCBs analytical flow chart

- Name of the person who made measurement: Barry Tseng
- Name of the person in charge of measurement: Troy Chang



Unless otherwise stated the results shown in this test report refer only to the sample(s) tested. This test report cannot be reproduced, except in full, without prior written permission of the Company. 除非另有說明，此等結果只對測試之樣品負責，不得以之作為本公司任何許可、不可許可之複製。
This document is issued by the Company subject to its General Conditions of Service printed overleaf, available on request or accessible at www.sgs.com/terms_and_conditions.htm and, for electronic format documents, subject to Terms and Conditions for Electronic Documents at www.sgs.com/en/Terms-and-Conditions/Terms-e-Document. Attention is drawn to the limitation of liability, indemnification and jurisdiction issues defined therein. Any holder of this document is advised that information contained hereon reflects the Company's findings at the time of its intervention only and within the limits of Client's instructions, if any. The Company's sole responsibility is to its Client and this document does not exonerate parties to a transaction from exercising all their rights and obligations under the transaction documents. This document cannot be reproduced except in full, without prior written approval of the Company. Any unauthorized alteration, forgery or falsification of the content or appearance of this document is unlawful and offenders may be prosecuted to the fullest extent of the law.

Test Report

No. : CE/2013/13196 Date : 2013/01/22 Page : 19 of 29

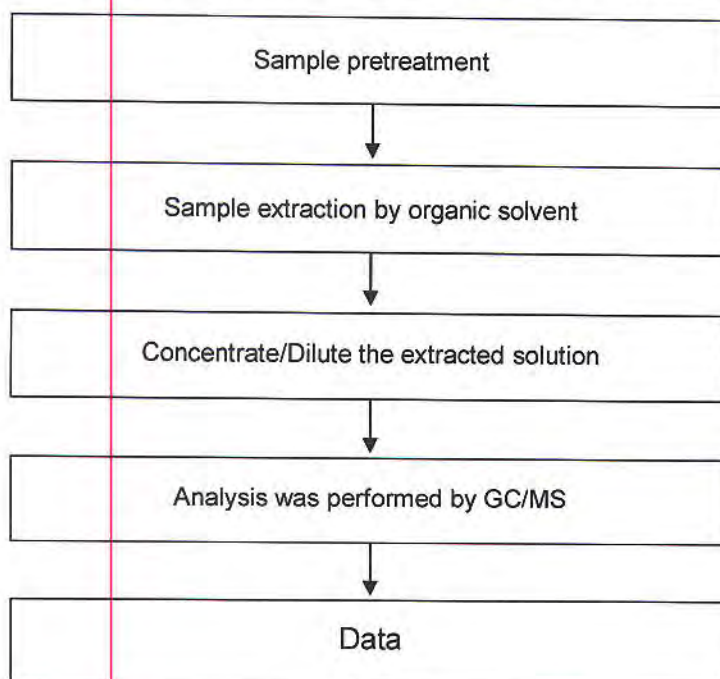
CERAMTEC GMBH

GESCHAFTSBEREICH MULTIFUNKTIONSKERAMIK, LUITPOLDSTRASSE 15, 91207 LAUF



Chlorinated Paraffins analytical flow chart

- Name of the person who made measurement: Barry Tseng
- Name of the person in charge of measurement: Troy Chang



Unless otherwise stated the results shown in this test report refer only to the sample(s) tested. This test report cannot be reproduced, except in full, without prior written permission of the Company. 除非另有說明，否則本測試報告之結果僅針對受測樣品。本報告未經本公司書面許可，不得部分複製。
This document is issued by the Company subject to its General Conditions of Service printed overleaf, available on request or accessible at www.sgs.com/terms_and_conditions.htm and, for electronic format documents, subject to Terms and Conditions for Electronic Documents at www.sgs.com/en/Terms-and-Conditions/Terms-e-Document. Attention is drawn to the limitation of liability, indemnification and jurisdiction issues defined therein. Any holder of this document is advised that information contained hereon reflects the Company's findings at the time of its intervention only and within the limits of Client's instructions, if any. The Company's sole responsibility is to its Client and this document does not exonerate parties to a transaction from exercising all their rights and obligations under the transaction documents. This document cannot be reproduced except in full, without prior written approval of the Company. Any unauthorized alteration, forgery or falsification of the content or appearance of this document is unlawful and offenders may be prosecuted to the fullest extent of the law.

Test Report

No. : CE/2013/13196 Date : 2013/01/22 Page : 20 of 29

CERAMTEC GMBH

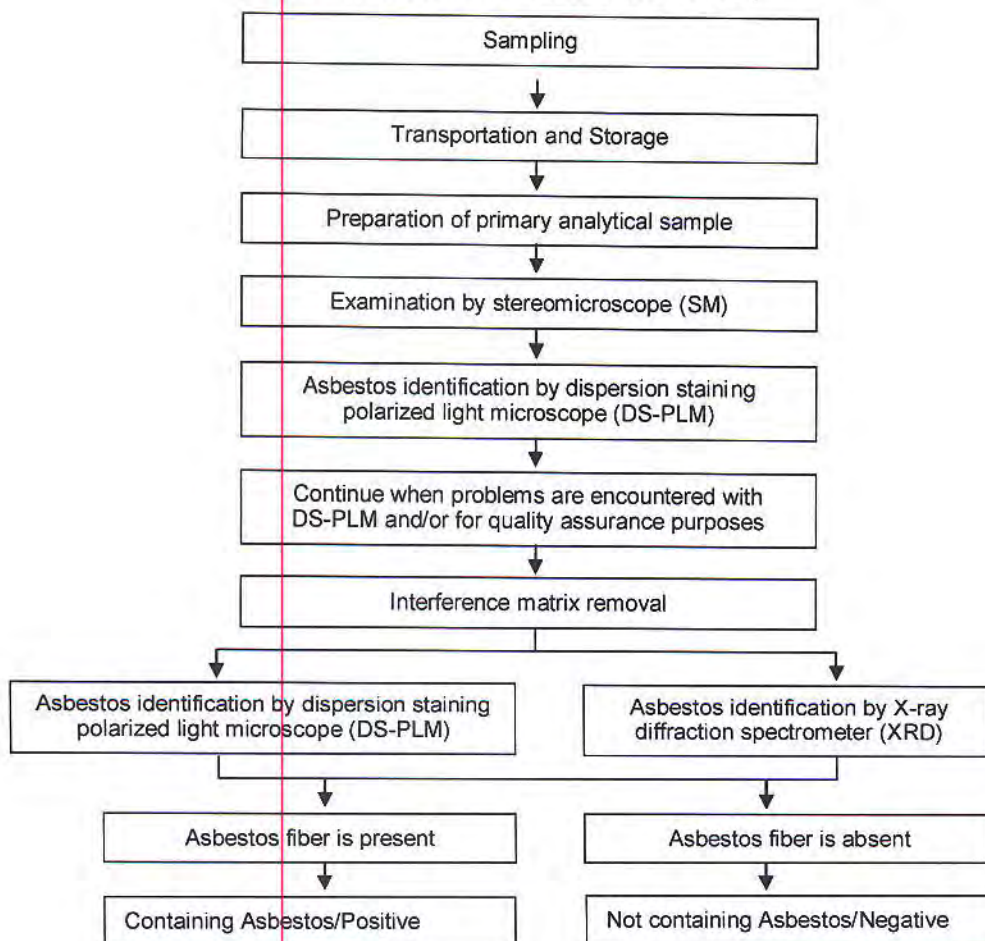
GESCHAFTSBEREICH MULTIFUNKTIONSKERAMIK, LUITPOLDSTRABE 15, 91207 LAUF



Analysis flow chart for determination of Asbestos

- Name of the person who made measurement: Victor Kao
- Name of the person in charge of measurement: Wendy Wei

[Reference method: EPA 600/R-93/116]



Unless otherwise stated the results shown in this test report refer only to the sample(s) tested. This test report cannot be reproduced, except in full, without prior written permission of the Company. 除非另有說明，此報告之結果僅針對測試之樣品而言。本報告不得全部或局部複製、轉載、轉售或再行利用，否則本公司將依法追究其法律責任。 This document is issued by the Company subject to its General Conditions of Service printed overleaf, available on request or accessible at www.sgs.com/terms_and_conditions.htm and, for electronic format documents, subject to Terms and Conditions for Electronic Documents at www.sgs.com/en/Terms-and-Conditions/Terms-e-Document. Attention is drawn to the limitation of liability, indemnification and jurisdiction issues defined therein. Any holder of this document is advised that information contained hereon reflects the Company's findings at the time of its intervention only and within the limits of Client's instructions, if any. The Company's sole responsibility is to its Client and this document does not exonerate parties to a transaction from exercising all their rights and obligations under the transaction documents. This document cannot be reproduced except in full, without prior written approval of the Company. Any unauthorized alteration, forgery or falsification of the content or appearance of this document is unlawful and offenders may be prosecuted to the fullest extent of the law.

Test Report

No. : CE/2013/13196 Date : 2013/01/22 Page : 21 of 29

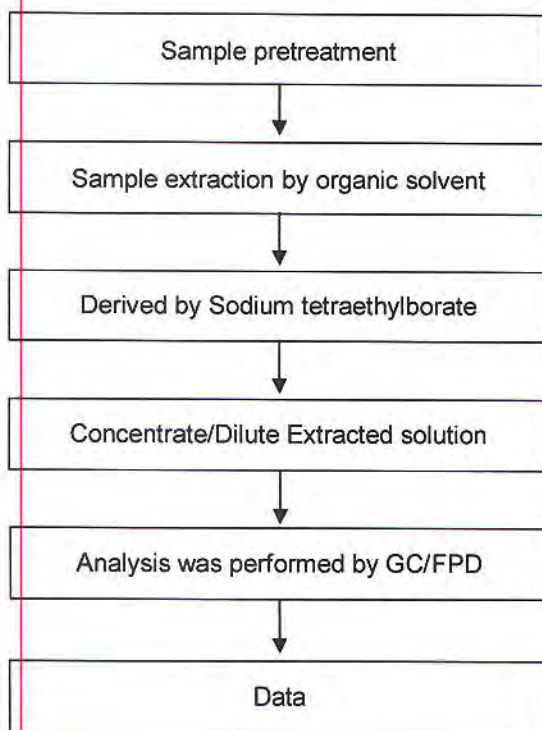
CERAMTEC GMBH

GESCHAFTSBEREICH MULTIFUNKTIONSKERAMIK, LUITPOLDSTRABE 15, 91207 LAUF



Analytical flow chart of Organic-Tin content

- Name of the person who made measurement: Ginny Chen
- Name of the person in charge of measurement: Troy Chang



Unless otherwise stated the results shown in this test report refer only to the sample(s) tested. This test report cannot be reproduced, except in full, without prior written permission of the Company. 除非另有說明，此報告中顯示之測試結果僅針對被測樣品而言。本報告未經本公司許可，不得部分複製。
This document is issued by the Company subject to its General Conditions of Service printed overleaf, available on request or accessible at www.sgs.com/terms_and_conditions.htm and, for electronic format documents, subject to Terms and Conditions for Electronic Documents at www.sgs.com/en/Terms-and-Conditions/Terms-e-Document. Attention is drawn to the limitation of liability, indemnification and jurisdiction issues defined therein. Any holder of this document is advised that information contained hereon reflects the Company's findings at the time of its intervention only and within the limits of Client's instructions, if any. The Company's sole responsibility is to its Client and this document does not exonerate parties to a transaction from exercising all their rights and obligations under the transaction documents. This document cannot be reproduced except in full, without prior written approval of the Company. Any unauthorized alteration, forgery or falsification of the content or appearance of this document is unlawful and offenders may be prosecuted to the fullest extent of the law.

Test Report

No. : CE/2013/13196 Date : 2013/01/22 Page : 22 of 29

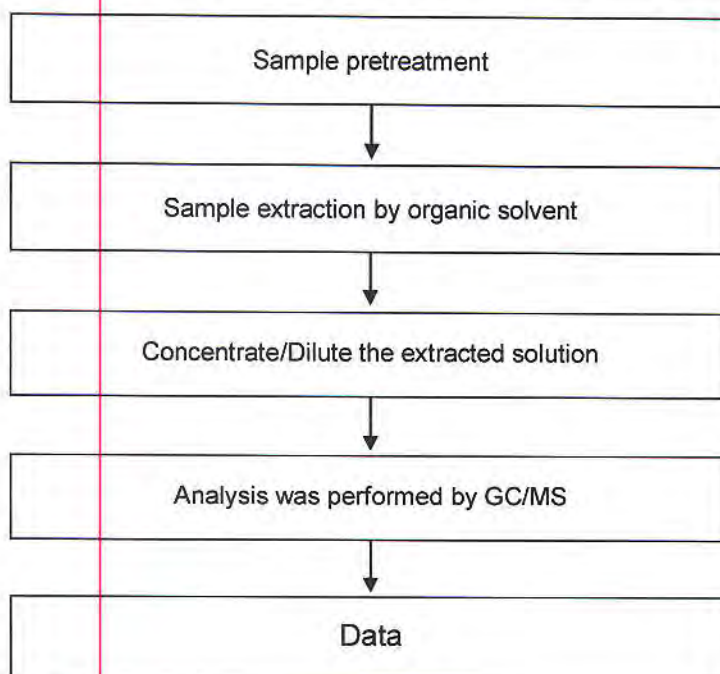
CERAMTEC GMBH

GESCHAFTSBEREICH MULTIFUNKTIONSKERAMIK, LUITPOLDSTRASSE 15, 91207 LAUF



PCNs analytical flow chart

- Name of the person who made measurement: Barry Tseng
- Name of the person in charge of measurement: Troy Chang



Unless otherwise stated the results shown in this test report refer only to the sample(s) tested. This test report cannot be reproduced, except in full, without prior written permission of the Company. 除非另有註明，此測試報告之測試結果僅針對本公司所測試之樣品。未經本公司書面許可，不得部分複製。
This document is issued by the Company subject to its General Conditions of Service printed overleaf, available on request or accessible at www.sgs.com/terms_and_conditions.htm and, for electronic format documents, subject to Terms and Conditions for Electronic Documents at www.sgs.com/en/Terms-and-Conditions/Terms-e-Document. Attention is drawn to the limitation of liability, indemnification and jurisdiction issues defined therein. Any holder of this document is advised that information contained hereon reflects the Company's findings at the time of its intervention only and within the limits of Client's instructions, if any. The Company's sole responsibility is to its Client and this document does not exonerate parties to a transaction from exercising all their rights and obligations under the transaction documents. This document cannot be reproduced except in full, without prior written approval of the Company. Any unauthorized alteration, forgery or falsification of the content or appearance of this document is unlawful and offenders may be prosecuted to the fullest extent of the law.

Test Report

No. : CE/2013/13196 Date : 2013/01/22 Page : 23 of 29

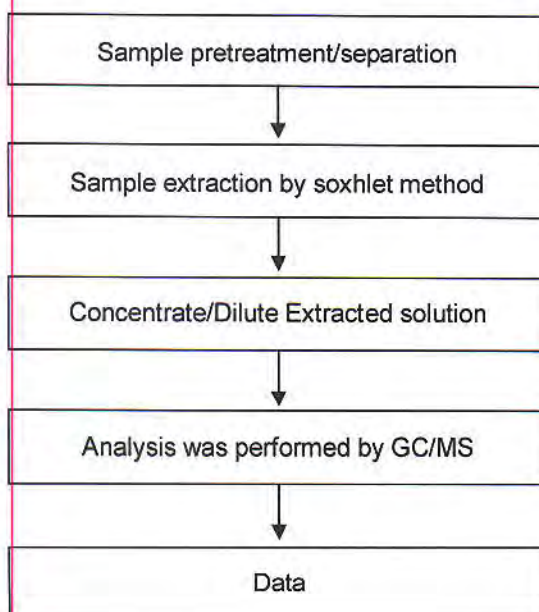
CERAMTEC GMBH

GESCHAFTSBEREICH MULTIFUNKTIONSKERAMIK, LUITPOLDSTRABE 15, 91207 LAUF



Analytical flow chart of phthalate content

- Name of the person who made measurement: Roman Wong
- Name of the person in charge of measurement: Troy Chang



Unless otherwise stated the results shown in this test report refer only to the sample(s) tested. This test report cannot be reproduced, except in full, without prior written permission of the Company. 除非另有說明，此測試結果僅針對測試之樣品負責。未經本公司書面許可，不得部分複製。
 This document is issued by the Company subject to its General Conditions of Service printed overleaf, available on request or accessible at www.sgs.com/terms_and_conditions.htm and, for electronic format documents, subject to Terms and Conditions for Electronic Documents at www.sgs.com/en/Terms-and-Conditions/Terms-e-Document. Attention is drawn to the limitation of liability, indemnification and jurisdiction issues defined therein. Any holder of this document is advised that information contained hereon reflects the Company's findings at the time of its intervention only and within the limits of Client's instructions, if any. The Company's sole responsibility is to its Client and this document does not exonerate parties to a transaction from exercising all their rights and obligations under the transaction documents. This document cannot be reproduced except in full, without prior written approval of the Company. Any unauthorized alteration, forgery or falsification of the content or appearance of this document is unlawful and offenders may be prosecuted to the fullest extent of the law.

Test Report

No. : CE/2013/13196 Date : 2013/01/22 Page : 24 of 29

CERAMTEC GMBH

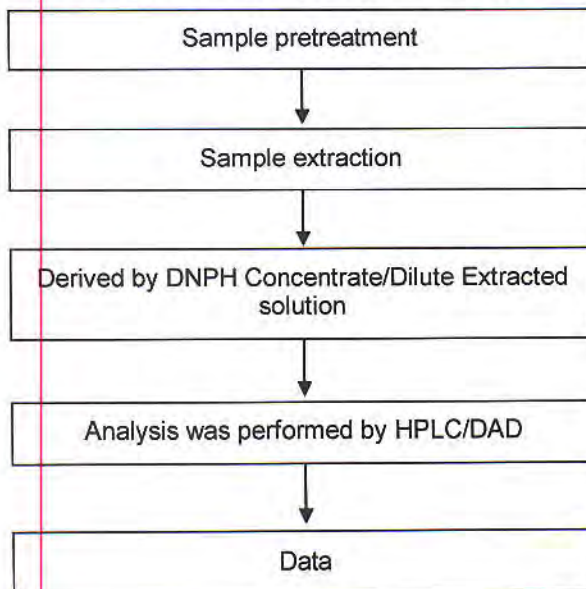
GESCHAFTSBEREICH MULTIFUNKTIONSKERAMIK, LUITPOLDSTRASSE 15, 91207 LAUF



Formaldehyde analytical flow chart

- Name of the person who made measurement: Scott Ku
- Name of the person in charge of measurement: Troy Chang

[Test Method : US EPA 8315A - ISO 17226-1]



Unless otherwise stated the results shown in this test report refer only to the sample(s) tested. This test report cannot be reproduced, except in full, without prior written permission of the Company. 除非另有說明，此報告結果僅指測試之樣品（包括但不限於來樣本公司自行留樣），不得任意複製。

This document is issued by the Company subject to its General Conditions of Service printed overleaf, available on request or accessible at www.sgs.com/terms_and_conditions.htm and, for electronic format documents, subject to Terms and Conditions for Electronic Documents at www.sgs.com/en/Terms-and-Conditions/Terms-e-Document. Attention is drawn to the limitation of liability, indemnification and jurisdiction issues defined therein. Any holder of this document is advised that information contained hereon reflects the Company's findings at the time of its intervention only and within the limits of Client's instructions, if any. The Company's sole responsibility is to its Client and this document does not exonerate parties to a transaction from exercising all their rights and obligations under the transaction documents. This document cannot be reproduced except in full, without prior written approval of the Company. Any unauthorized alteration, forgery or falsification of the content or appearance of this document is unlawful and offenders may be prosecuted to the fullest extent of the law.

Test Report

No. : CE/2013/13196 Date : 2013/01/22 Page : 25 of 29

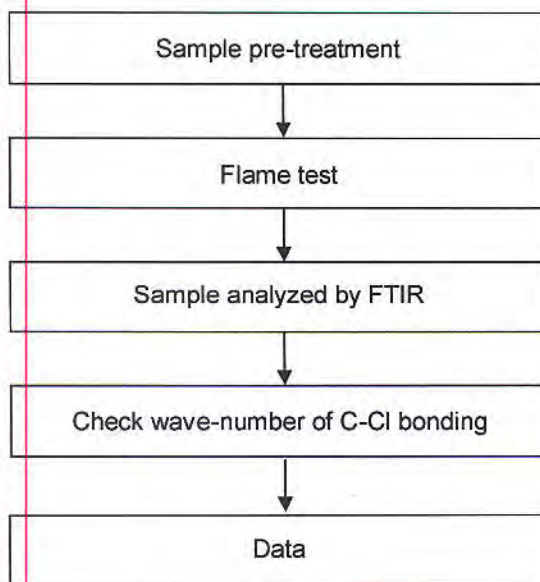
CERAMTEC GMBH

GESCHAFTSBEREICH MULTIFUNKTIONSKERAMIK, LUITPOLDSTRABE 15, 91207 LAUF



Analysis flow chart for determination of PVC in material

- Name of the person who made measurement: Ginny Chen
- Name of the person in charge of measurement: Troy Chang



Unless otherwise stated the results shown in this test report refer only to the sample(s) tested. This test report cannot be reproduced, except in full, without prior written permission of the Company. 除非另有說明，此測試報告之結果僅指被測試之樣品。本測試報告不得被複製，除非事先獲得本公司之書面許可。 This document is issued by the Company subject to its General Conditions of Service printed overleaf, available on request or accessible at www.sgs.com/terms_and_conditions.htm and, for electronic format documents, subject to Terms and Conditions for Electronic Documents at www.sgs.com/en/Terms-and-Conditions/Terms-e-Document. Attention is drawn to the limitation of liability, indemnification and jurisdiction issues defined therein. Any holder of this document is advised that information contained hereon reflects the Company's findings at the time of its intervention only and within the limits of Client's instructions, if any. The Company's sole responsibility is to its Client and this document does not exonerate parties to a transaction from exercising all their rights and obligations under the transaction documents. This document cannot be reproduced except in full, without prior written approval of the Company. Any unauthorized alteration, forgery or falsification of the content or appearance of this document is unlawful and offenders may be prosecuted to the fullest extent of the law.

Test Report

No. : CE/2013/13196 Date : 2013/01/22 Page : 26 of 29

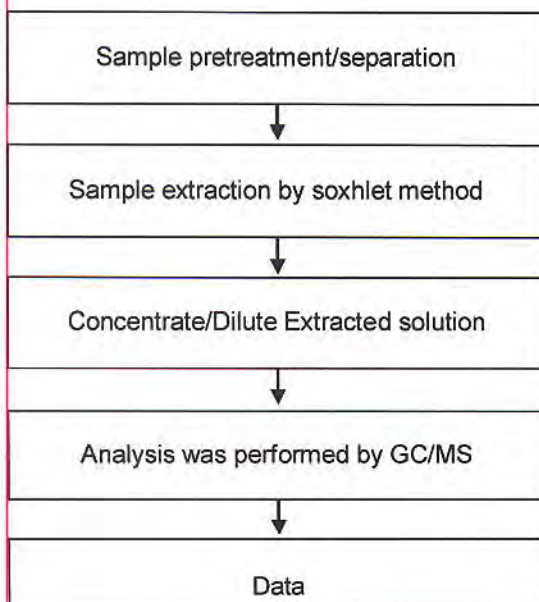
CERAMTEC GMBH

GESCHAFTSBEREICH MULTIFUNKTIONSKERAMIK, LUITPOLDSTRABE 15, 91207 LAUF



DBBT analytical flow chart

- Name of the person who made measurement: Roman Wong
- Name of the person in charge of measurement: Troy Chang



Unless otherwise stated the results shown in this test report refer only to the sample(s) tested. This test report cannot be reproduced, except in full, without prior written permission of the Company. 除非另有說明，此報告所載之測試結果僅針對被測之樣品。本報告不得被全部或局部複製，除非事先獲得本公司之書面許可。 This document is issued by the Company subject to its General Conditions of Service printed overleaf, available on request or accessible at www.sgs.com/terms_and_conditions.htm and, for electronic format documents, subject to Terms and Conditions for Electronic Documents at www.sgs.com/en/Terms-and-Conditions/Terms-e-Document. Attention is drawn to the limitation of liability, indemnification and jurisdiction issues defined therein. Any holder of this document is advised that information contained hereon reflects the Company's findings at the time of its intervention only and within the limits of Client's instructions, if any. The Company's sole responsibility is to its Client and this document does not exonerate parties to a transaction from exercising all their rights and obligations under the transaction documents. This document cannot be reproduced except in full, without prior written approval of the Company. Any unauthorized alteration, forgery or falsification of the content or appearance of this document is unlawful and offenders may be prosecuted to the fullest extent of the law.

Test Report

No.: CE/2013/13196 Date: 2013/01/22 Page: 27 of 29

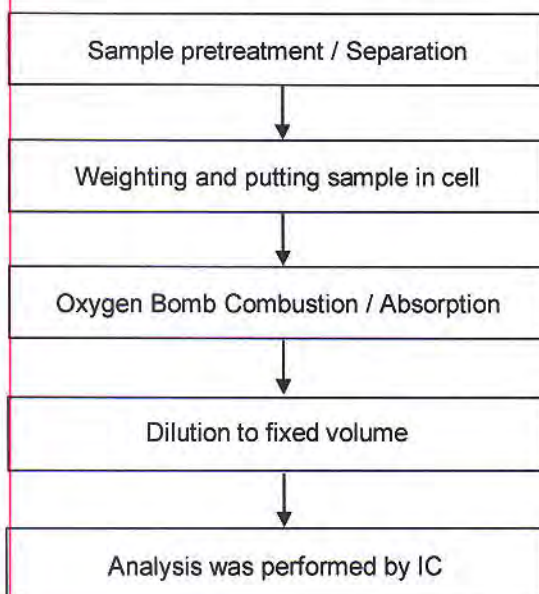
CERAMTEC GMBH

GESCHAFTSBEREICH MULTIFUNKTIONSKERAMIK, LUITPOLDSTRASSE 15, 91207 LAUF



Analytical flow chart of halogen content

- 1) Name of the person who made measurement: Rita Chen
- 2) Name of the person in charge of measurement: Troy Chang



Unless otherwise stated the results shown in this test report refer only to the sample(s) tested. This test report cannot be reproduced, except in full, without prior written permission of the Company. 除非另有說明，否則測試結果僅適用於所測試之樣品。本測試報告不得重製或轉載，除非事先獲得本公司之書面許可。

This document is issued by the Company subject to its General Conditions of Service printed overleaf, available on request or accessible at www.sgs.com/terms_and_conditions.htm and, for electronic format documents, subject to Terms and Conditions for Electronic Documents at www.sgs.com/en/Terms-and-Conditions/Terms-e-Documents. Attention is drawn to the limitation of liability, indemnification and jurisdiction issues defined therein. Any holder of this document is advised that information contained hereon reflects the Company's findings at the time of its intervention only and within the limits of Client's instructions, if any. The Company's sole responsibility is to its Client and this document does not exonerate parties to a transaction from exercising all their rights and obligations under the transaction documents. This document cannot be reproduced except in full, without prior written approval of the Company. Any unauthorized alteration, forgery or falsification of the content or appearance of this document is unlawful and offenders may be prosecuted to the fullest extent of the law.

Test Report

No. : CE/2013/13196 Date : 2013/01/22 Page : 28 of 29

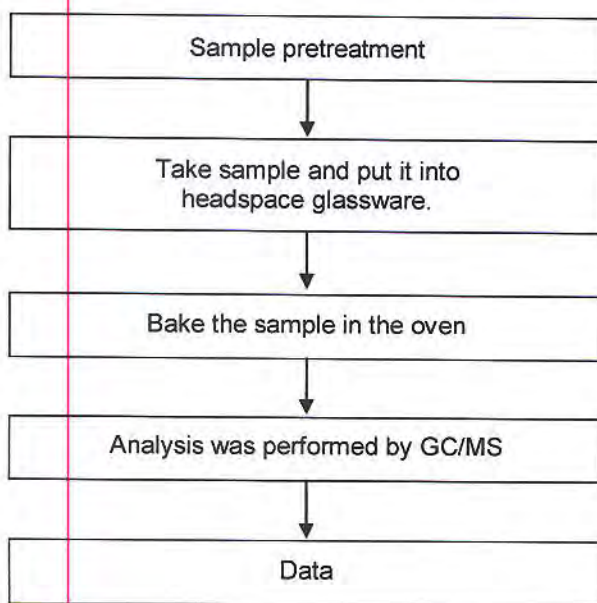
CERAMTEC GMBH

GESCHAFTSBEREICH MULTIFUNKTIONSKERAMIK, LUITPOLDSTRASSE 15, 91207 LAUF



Analytical flow chart of volatile organic compounds (VOCs)

- Name of the person who made measurement : Chun Wu
 - Name of the person in charge of measurement : Shinjyh Chen
- 【Reference method : US EPA 5021】



Unless otherwise stated the results shown in this test report refer only to the sample(s) tested. This test report cannot be reproduced, except in full, without prior written permission of the Company. 除非另有說明，此報告中顯示之測試結果僅針對被測樣品而言。未經本公司書面許可，不得部分複製。
This document is issued by the Company subject to its General Conditions of Service printed overleaf, available on request or accessible at www.sgs.com/terms_and_conditions.htm and, for electronic format documents, subject to Terms and Conditions for Electronic Documents at www.sgs.com/en/Terms-and-Conditions/Terms-e-Document. Attention is drawn to the limitation of liability, indemnification and jurisdiction issues defined therein. Any holder of this document is advised that information contained hereon reflects the Company's findings at the time of its intervention only and within the limits of Client's instructions, if any. The Company's sole responsibility is to its Client and this document does not exonerate parties to a transaction from exercising all their rights and obligations under the transaction documents. This document cannot be reproduced except in full, without prior written approval of the Company. Any unauthorized alteration, forgery or falsification of the content or appearance of this document is unlawful and offenders may be prosecuted to the fullest extent of the law.

Test Report

No. : CE/2013/13196 Date : 2013/01/22 Page : 29 of 29

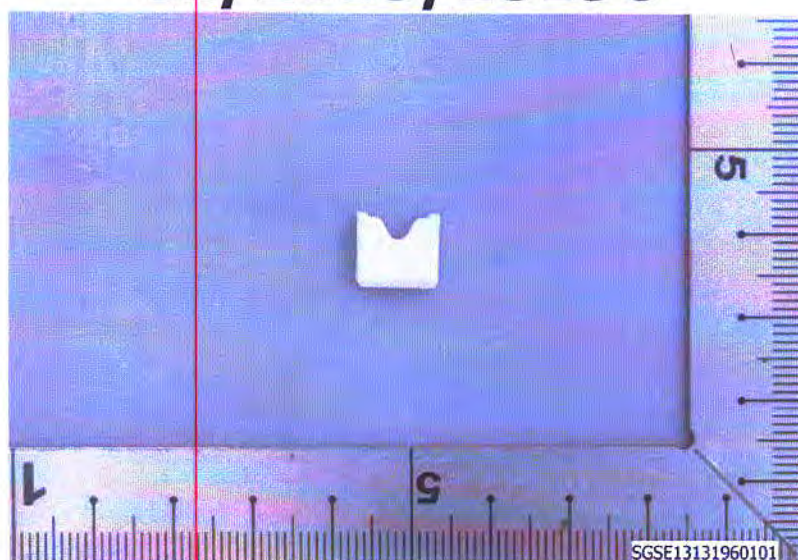
CERAMTEC GMBH

GESCHAFTSBEREICH MULTIFUNKTIONSKERAMIK, LUITPOLDSTRASSE 15, 91207 LAUF



* The tested sample / part is marked by an arrow if it's shown on the photo. *

CE/2013/13196



** End of Report **

Unless otherwise stated the results shown in this test report refer only to the sample(s) tested. This test report cannot be reproduced, except in full, without prior written permission of the Company. 除非另有說明，此報告結果僅對測試之樣品負責，不得對未經本公司同意許可，不得部分複製。
This document is issued by the Company subject to its General Conditions of Service printed overleaf, available on request or accessible at www.sgs.com/terms_and_conditions.htm and, for electronic format documents, subject to Terms and Conditions for Electronic Documents at www.sgs.com/en/Terms-and-Conditions/Terms-e-Document. Attention is drawn to the limitation of liability, indemnification and jurisdiction issues defined therein. Any holder of this document is advised that information contained hereon reflects the Company's findings at the time of its intervention only and within the limits of Client's instructions, if any. The Company's sole responsibility is to its Client and this document does not exonerate parties to a transaction from exercising all their rights and obligations under the transaction documents. This document cannot be reproduced except in full, without prior written approval of the Company. Any unauthorized alteration, forgery or falsification of the content or appearance of this document is unlawful and offenders may be prosecuted to the fullest extent of the law.

Test Report

Number : TWNC00317747

Date : Jun 19, 2013

Applicant: Littelfuse Philippines Inc.
LIMA Technology Center, Lipa City,
Malvar, Batangas

Sample Description:

One (1) group of submitted samples said to be :

Part Description : Ceramic Body

Part Number : 909-434

Date Sample Received : Jun 11, 2013

Date Test Started : Jun 13, 2013

Test Conducted :

As requested by the applicant, for details please refer to attached pages.

Authorized by:

On Behalf of Intertek Testing Services
Taiwan Limited



K. Y. Liang
Director



Page 1 of 7

Intertek Testing Services Taiwan Ltd.

8F., No. 423, Ruiguang Rd., Neihu District, Taipei 11492, Taiwan, R.O.C.

全國公證檢驗股份有限公司

11492 台北市內湖區瑞光路 423 號 8 樓

Tel: (+886-2) 6602-2888 · 2797-8885 Fax: (+886-2) 6602-2410

Test Report

Number : TWNC00317747

Test Conducted

Test Result Summary:

<u>Test Item</u>	<u>Unit</u>	<u>Test Method</u>	<u>Result</u>	<u>RL</u>
			<u>White ceramic</u>	
Heavy Metal				
Antimony (Sb) Content	ppm	With reference to USEPA 3052, by microwave digestion and determined by ICP-OES.	ND	2
Phthalates				
Diisobutyl Phthalate (DIBP)	ppm	With reference to EN 14372: 2004, by solvent extraction and determined by GC-MS.	ND	10

Remarks: ppm = parts per million based on weight of tested sample = mg/kg

ND = Not detected

RL = Reporting Limit, Quantitation limit of analyte in sample

Responsibility of Chemist: Kevin Liu/ Irene Chiou/ Vico Lin

Date Sample Received : Jun 11,2013

Test Period : Jun 13,2013 To Jun 17,2013

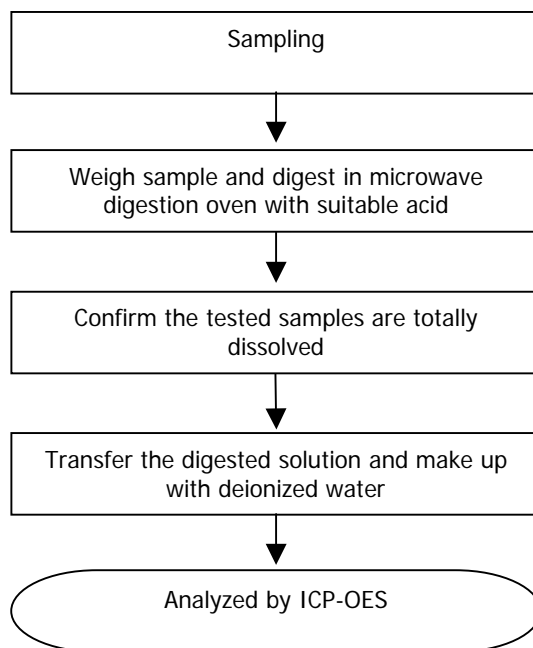


Test Report

Number : TWNC00317747

Test Conducted
Measurement Flowchart:

Test for Heavy Metal (Sb) Contents
Reference Method : USEPA 3052



Test Report

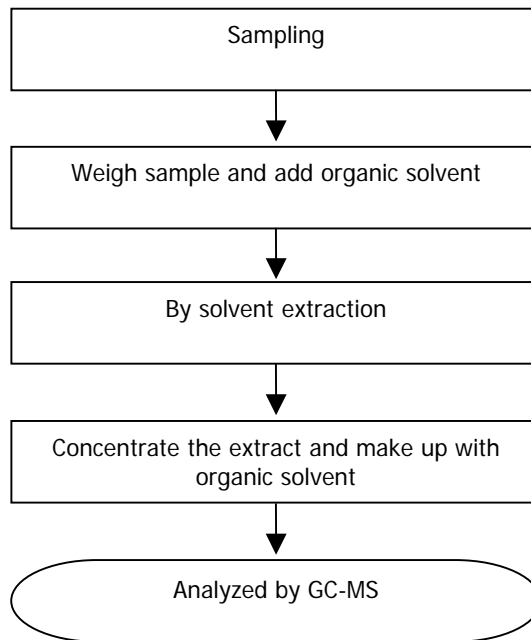
Number : TWNC00317747

Test Conducted

Measurement Flowchart:

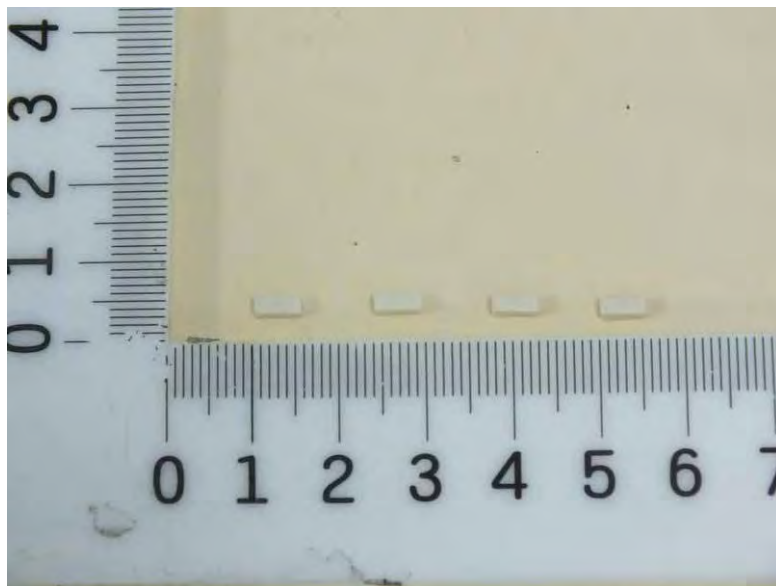
Test for Phthalates Contents

Reference Method: EN 14372: 2004



Test Report

Number : TWNC00317747



End of Report

This report is made solely on the basis of your instructions and/or information and materials supplied by you. It is not intended to be a recommendation for any particular course of action. Intertek does not accept a duty of care or any other responsibility to any person other than the Client in respect of this report and only accepts liability to the Client insofar as is expressly contained in the terms and conditions governing Intertek's provision of services to you. Intertek makes no warranties or representations either express or implied with respect to this report save as provided for in those terms and conditions. We have aimed to conduct the Review on a diligent and careful basis and we do not accept any liability to you for any loss arising out of or in connection with this report, in contract, tort, by statute or otherwise, except in the event of our gross negligence or wilful misconduct.



Page 5 of 7

Intertek Testing Services Taiwan Ltd.

8F., No. 423, Ruiguang Rd., Neihu District, Taipei 11492, Taiwan, R.O.C.

全國公證檢驗股份有限公司

11492 台北市內湖區瑞光路 423 號 8 樓

Tel: (+886-2) 6602-2888 · 2797-8885 Fax: (+886-2) 6602-2410



Test Report

Number: SHAH00361401

Applicant: LITTELFUSE,INC.
800 E. NORTHWEST HWY
Attn: A.DIVIETRO/D.UNTIEDT

Date: JAN 16, 2013

Sample Description:

One (1) submitted sample said to be **Grey Wire**.

Item Name : Wire Tin Plated Cu.

Part No. : Element.

Tests Conducted:

As requested by the applicant, for details refer to attached page(s).

To be continued

Authorized by:
For intertek testing services Ltd., Shanghai

Jacob Lin
General Manager



Tests Conducted

(I) Test Result Summary:

Testing Item	Result (ppm)
	(1)
Heavy Metal	
Cadmium (Cd) content	ND
Lead (Pb) content	ND
Mercury (Hg) content	ND
Chromium VI (Cr ⁶⁺) content (mg/kg With 50cm ²)	Negative (< 0.02)

Testing Item	Result (ppm)
	(2)
Heavy Metal	
Cadmium (Cd) content / Plating	ND
Lead (Pb) content / Plating	60
Mercury (Hg) content / Plating	ND
Chromium VI (Cr ⁶⁺) content (mg/kg With 50cm ²) / Plating	Negative (< 0.02)

Remarks: ppm = parts per million = mg/kg
ND = not detected

@ = Due to the insufficient sample area, reduced total sample surface of 10 cm² was used and the dilution factor was adjusted accordingly.
mg/kg with 50cm² = milligram per kilogram with 50 square centimetre

Tested components:

- (1) Substrate.
- (2) Plating.

Responsibility of Chemist: Dent Fang / Ken He

(II) RoHS Requirement:

Restricted substances	Limits
Cadmium (Cd) Content	0.01% (100ppm)
Lead (Pb) Content	0.1% (1000ppm)
Mercury (Hg) Content	0.1% (1000ppm)
Chromium VI (Cr ⁶⁺) Content	0.1% (1000ppm)
Polybrominated Biphenyls (PBBs)	0.1% (1000ppm)
Polybrominated Diphenyl Ethers (PBDEs)	0.1% (1000ppm)

The above limits were quoted from RoHS Directive 2011/65/EU for homogeneous material.

(III) Test Method:

Testing item	Testing method	Reporting limit
Cadmium (Cd) content	With reference to IEC 62321 edition 1.0:2008 in clause 8/9/10, by microwave digestion until the tested samples are totally dissolved and determined by ICP-OES.	2 ppm
Lead (Pb) content	With reference to IEC 62321 edition 1.0:2008 in clause 8/9/10, by microwave digestion until the tested samples are totally dissolved and determined by ICP-OES.	2 ppm
Mercury (Hg) content	With reference to IEC 62321 edition 1.0:2008 in clause 7, by microwave digestion until the tested samples are totally dissolved and determined by ICP-OES.	2 ppm
Chromium VI (Cr ⁶⁺) content	With reference to IEC 62321 edition 1.0:2008 in Annex B, by boiling water extraction and determined by UV-VIS Spectrophotometer.	0.02 mg/kg with 50cm ²

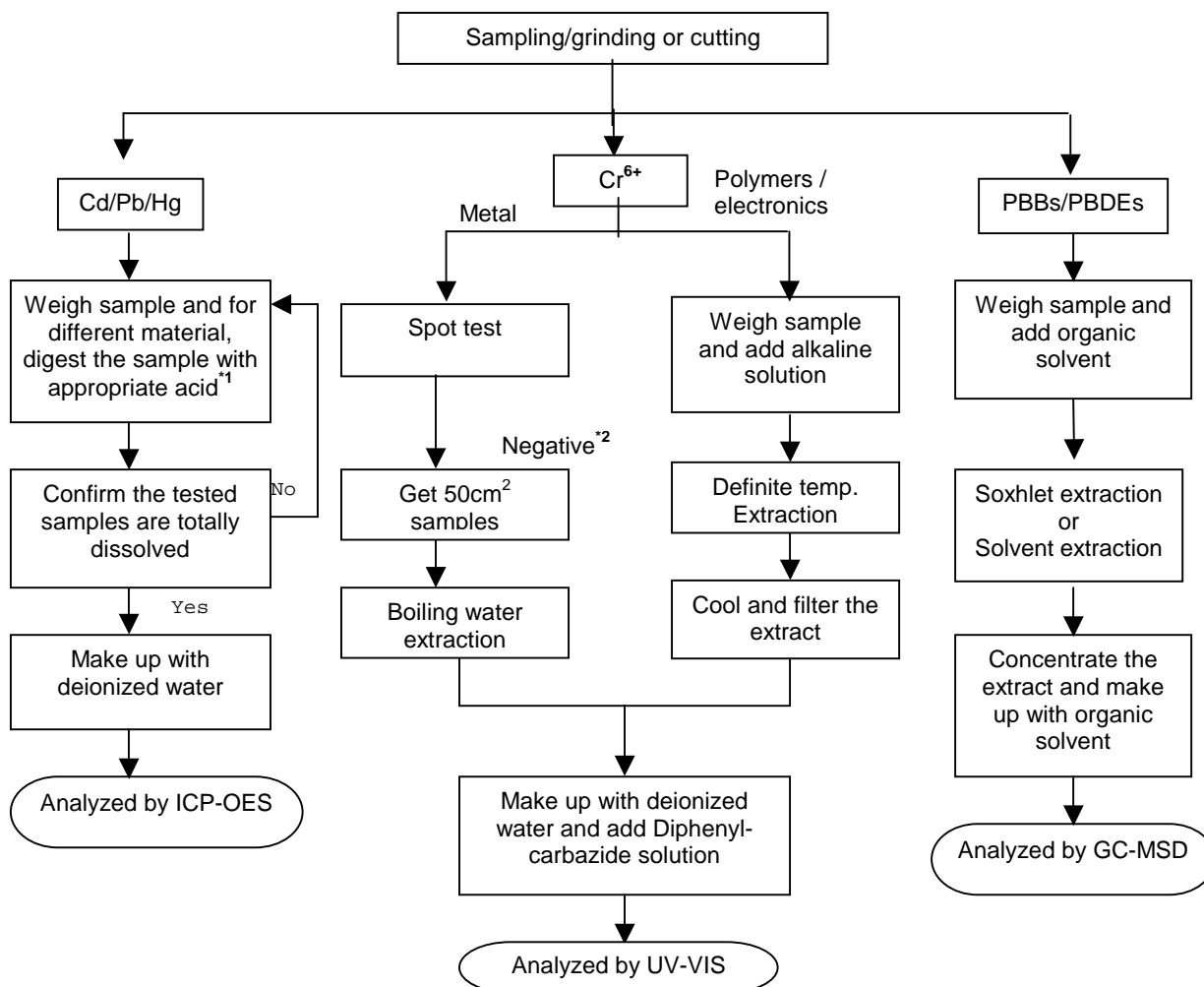
Remark: Reporting limit = Quantitation limit of analyze in sample

Date Sample Received: Jan.9, 2013

Testing Period: Jan.9, 2013 to Jan.14, 2013

To be continued

Tests Conducted
(IV) MEASUREMENT FLOWCHART:
Test for Cd/ Pb/ Hg/Cr (VI)/ PBBs/PBDEs contents
Reference standard: IEC 62321 edition 1.0:2008



REMARKS:

*1: LIST OF APPROPRIATE ACID:

MATERIAL	ACID ADDED FOR DIGESTION
Polymers	HNO ₃ , HCl, HF, H ₂ O ₂ , H ₃ BO ₃
Metals	HNO ₃ , HCL, HF
Electronics	HNO ₃ , HCL, H ₂ O ₂ , HBF ₄

*2: IF THE RESULT OF SPOT TEST IS POSITIVE, CHROMIUM (VI) WOULD BE DETERMINED AS DETECTED.

To be continued

Tests Conducted



End of report

This report is made solely on the basis of your instructions and/or information and materials supplied by you. It is not intended to be a recommendation for any particular course of action. Intertek does not accept a duty of care or any other responsibility to any person other than the Client in respect of this report and only accepts liability to the Client insofar as is expressly contained in the terms and conditions governing Intertek's provision of services to you. Intertek makes no warranties or representations either express or implied with respect to this report save as provided for in those terms and conditions. We have aimed to conduct the Review on a diligent and careful basis and we do not accept any liability to you for any loss arising out of or in connection with this report, in contract, tort, by statute or otherwise, except in the event of our gross negligence or wilful misconduct.

Test Report

Applicant: Littelfuse Philippines Inc.
LIMA Technology Center, Lipa City,
Malvar, Batangas

Number : TWNC00340081
Date : Nov 07, 2013

Sample Description:

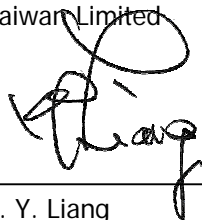
One (1) group of submitted samples said to be :

Part Description : Solder- 92.5Pb5Sn2.5Ag
Part Number : 692323
Date Sample Received : Oct 30, 2013
Date Test Started : Oct 31, 2013

Test Conducted :

As requested by the applicant, for details please refer to attached pages.

Authorized by:
On Behalf of Intertek Testing Services
Taiwan Limited



K. Y. Liang
Director



Test Report

Number: TWNC00340081

Test Conducted

Test Result Summary:

Test Result Summary:				
Test Item	Unit	Test Method	Result	RL
			Silvery metal	
Heavy Metal				
Cadmium (Cd) content	ppm	With reference to IEC 62321-5: 2013, by microwave or acid digestion and determined by ICP-OES.	ND	2
Lead (Pb) content	ppm	With reference to IEC 62321-5: 2013, by microwave or acid digestion and determined by ICP-OES.	913043	2
Mercury (Hg) content	ppm	With reference to IEC 62321-4: 2013, by microwave or acid digestion and determined by ICP-OES.	ND	2
Chromium VI (Cr ⁶⁺) content	mg/kg with 50 cm ²	With reference to IEC 62321: 2008, by boiling water extraction and determined by UV-Vis Spectrophotometer.	Negative	0.02

Remarks: ppm = Parts per million based on weight of tested sample = mg/kg
 ND = Not detected
 RL = Reporting Limit, quantitation limit of analyte in sample
 mg/kg with 50cm² = Milligram per kilogram with 50 square centimeter
 Negative = A negative test result indicated positive observation was not found at the time of test.

Responsibility of Chemist: Kevin Liu/ Irene Chiou

Date Sample Received : Oct 30, 2013
 Test Period : Oct 31, 2013 to Nov 07, 2013

RoHS Limit

Restricted Substances	Limits
Cadmium (Cd) content	0.01% (100ppm)
Lead (Pb) content	0.1% (1000ppm)
Mercury (Hg) content	0.1% (1000ppm)
Chromium VI (Cr ⁶⁺) content	0.1% (1000ppm)

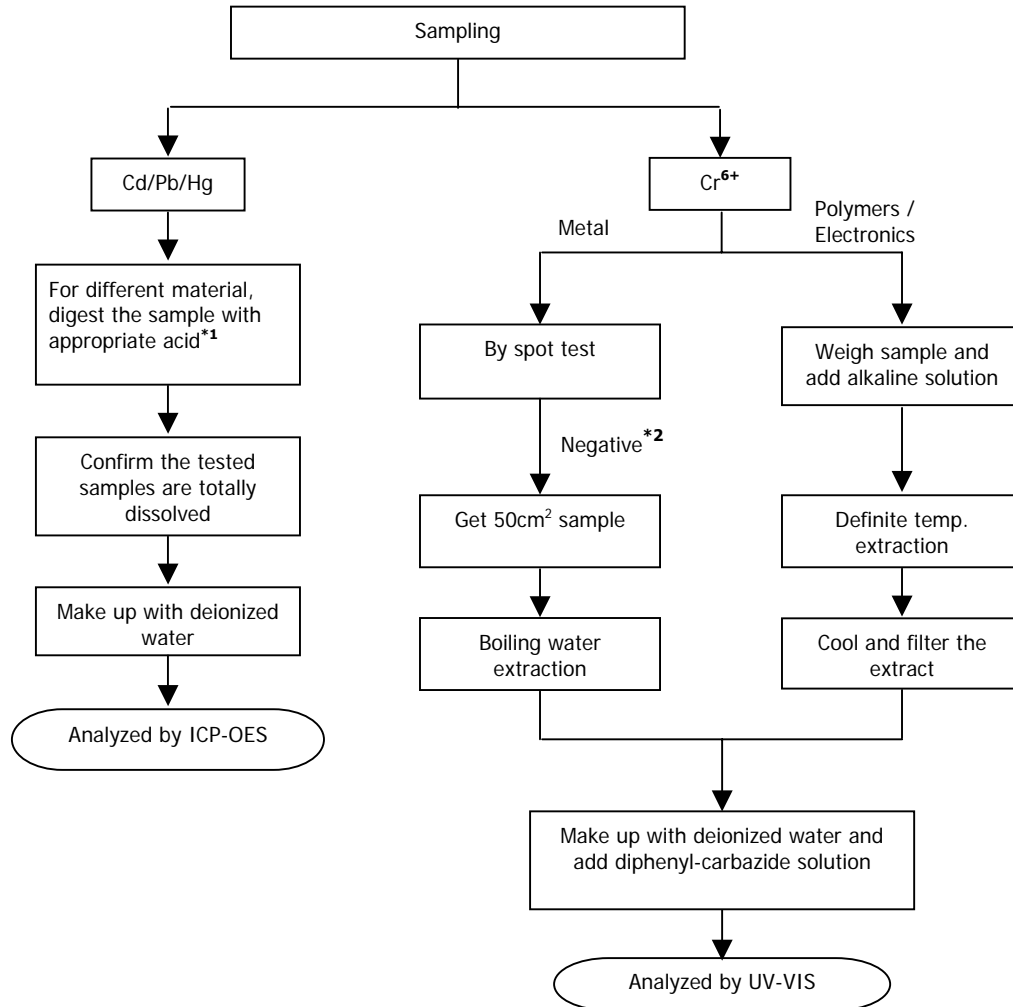
The above limits were quoted from Annex II of 2011/65/EU for homogeneous material.



Test Report

Number: TWNC00340081

Test Conducted
 Test For Cd/Pb/Hg/Chromium (VI)
 Reference Standard : Cd/Pb: IEC 62321-5:2013; Hg: IEC 62321-4:2013;
 Chromium (VI): IEC 62321:2008



Test Report

Number: TWNC00340081



End of Report

This report is made solely on the basis of your instructions and/or information and materials supplied by you. It is not intended to be a recommendation for any particular course of action. Intertek does not accept a duty of care or any other responsibility to any person other than the Client in respect of this report and only accepts liability to the Client insofar as is expressly contained in the terms and conditions governing Intertek's provision of services to you. Intertek makes no warranties or representations either express or implied with respect to this report save as provided for in those terms and conditions. We have aimed to conduct the Review on a diligent and careful basis and we do not accept any liability to you for any loss arising out of or in connection with this report, in contract, tort, by statute or otherwise, except in the event of our gross negligence or wilful misconduct.



Page 4 of 6

Intertek Testing Services Taiwan Ltd.

8F., No. 423, Ruiguang Rd., Neihu District, Taipei 11492, Taiwan, R.O.C.

全國公證檢驗股份有限公司

11492 台北市內湖區瑞光路 423 號 8 樓

Tel: (+886-2) 6602-2888 · 2797-8885 Fax: (+886-2) 6602-2410

Test Report

Applicant: Littelfuse Philippines Inc.
LIMA Technology Center, Lipa City,
Malvar, Batangas

Number : TWNC00330777
Date : Sep 12, 2013

Sample Description:

One (1) group of submitted samples said to be :

Part Description : Yarn
Part Number : 648118_648119_648120(6481xxx_GLZZxxx)
Date Sample Received : Sep 06, 2013
Date Test Started : Sep 06, 2013

Test Conducted :

As requested by the applicant, for details please refer to attached pages.

Authorized by:
On Behalf of Intertek Testing Services
Taiwan Limited



K. Y. Liang
Director



Test Report

Number: TWNC00330777

Test Conducted

Test Result Summary:

Test Result Summary:				
Test Item	Unit	Test Method	Result	RL
			White yarn	
Heavy Metal				
Cadmium (Cd) content	ppm	With reference to IEC 62321: 2008, by microwave digestion and determined by ICP-OES.	ND	2
Lead (Pb) content	ppm	With reference to IEC 62321: 2008, by microwave digestion and determined by ICP-OES.	ND	2
Mercury (Hg) content	ppm	With reference to IEC 62321: 2008, by microwave digestion and determined by ICP-OES.	ND	2
Antimony (Sb) Content	ppm	With reference to USEPA 3052, by microwave digestion and determined by ICP-OES.	ND	2
Chromium VI (Cr ⁶⁺) content	ppm	With reference to IEC 62321: 2008, by alkaline digestion and determined by UV-Vis Spectrophotometer.	ND	1
Polybrominated Biphenyls (PBBs)				
Monobrominated Biphenyls (MonoBB)	ppm	With reference to IEC 62321: 2008, by solvent extraction and determined by GC-MS and further HPLC-DAD confirmation when necessary.	ND	5
Dibrominated Biphenyls (DiBB)	ppm		ND	5
Tribrominated Biphenyls (TriBB)	ppm		ND	5
Tetrabrominated Biphenyls (TetraBB)	ppm		ND	5
Pentabrominated Biphenyls (PentaBB)	ppm		ND	5
Hexabrominated Biphenyls (HexaBB)	ppm		ND	5
Heptabrominated Biphenyls (HeptaBB)	ppm		ND	5
Octabrominated Biphenyls (OctaBB)	ppm		ND	5
Nonabrominated Biphenyls (NonaBB)	ppm		ND	5
Decabrominated Biphenyl (DecaBB)	ppm		ND	5



Test Report

Number: TWNC00330777

Test Conducted

Test Item	Unit	Test Method	Result	RL
			White yarn	
Polybrominated Diphenyl Ethers (PBDEs)				
Monobrominated Diphenyl Ethers (MonoBDE)	ppm	With reference to IEC 62321: 2008, by solvent extraction and determined by GC-MS and further HPLC-DAD confirmation when necessary.	ND	5
Dibrominated Diphenyl Ethers (DiBDE)	ppm		ND	5
Tribrominated Diphenyl Ethers (TriBDE)	ppm		ND	5
Tetrabrominated Diphenyl Ethers (TetraBDE)	ppm		ND	5
Pentabrominated Diphenyl Ethers (PentaBDE)	ppm		ND	5
Hexabrominated Diphenyl Ethers (HexaBDE)	ppm		ND	5
Heptabrominated Diphenyl Ethers (HeptaBDE)	ppm		ND	5
Octabrominated Diphenyl Ethers (OctaBDE)	ppm		ND	5
Nonabrominated Diphenyl Ethers (NonaBDE)	ppm		ND	5
Decabrominated Diphenyl Ether (DecaBDE)	ppm		ND	5
Halogen Content				
Fluorine (F)	ppm	With reference to EN 14582:2007 by combustion bomb with oxygen and determined by Ion Chromatography.	ND	50
Chlorine (Cl)	ppm		ND	50
Bromine (Br)	ppm		ND	50
Iodine (I)	ppm		ND	50
Phthalates				
Di(2-ethylhexyl) Phthalate (DEHP)	ppm	With reference to EN 14372: 2004, by solvent extraction and determined by GC-MS.	ND	10
Dibutyl Phthalate (DBP)	ppm		ND	10
Benzyl Butyl Phthalate (BBP)	ppm		ND	10
Diisobutyl phthalate (DIBP)	ppm		ND	10
Others				
Hexabromocyclododecane (HBCDD)	ppm	With reference to USEPA 3540C, by solvent extraction and determined by GC-MS.	ND	10



Test Report

Number: TWNC00330777

Test Conducted

Remarks: ppm = parts per million based on weight of tested sample = mg/kg
ND = Not detected
RL = Reporting Limit, Quantitation limit of analyte in sample

Responsibility of Chemist: Kevin Liu/ Irene Chiou/ Vico Lin

Date Sample Received : Sep 06, 2013
Test Period : Sep 06, 2013 to Sep 10, 2013

RoHS Limit

<u>Restricted Substances</u>	<u>Limits</u>
Cadmium (Cd) content	0.01% (100ppm)
Lead (Pb) content	0.1% (1000ppm)
Mercury (Hg) content	0.1% (1000ppm)
Chromium VI (Cr ⁶⁺) content	0.1% (1000ppm)
Polybrominated Biphenyls (PBBs)	0.1% (1000ppm)
Polybrominated Diphenyl Ethers (PBDEs)	0.1% (1000ppm)

The above limits were quoted from Annex II of 2011/65/EU for homogeneous material.

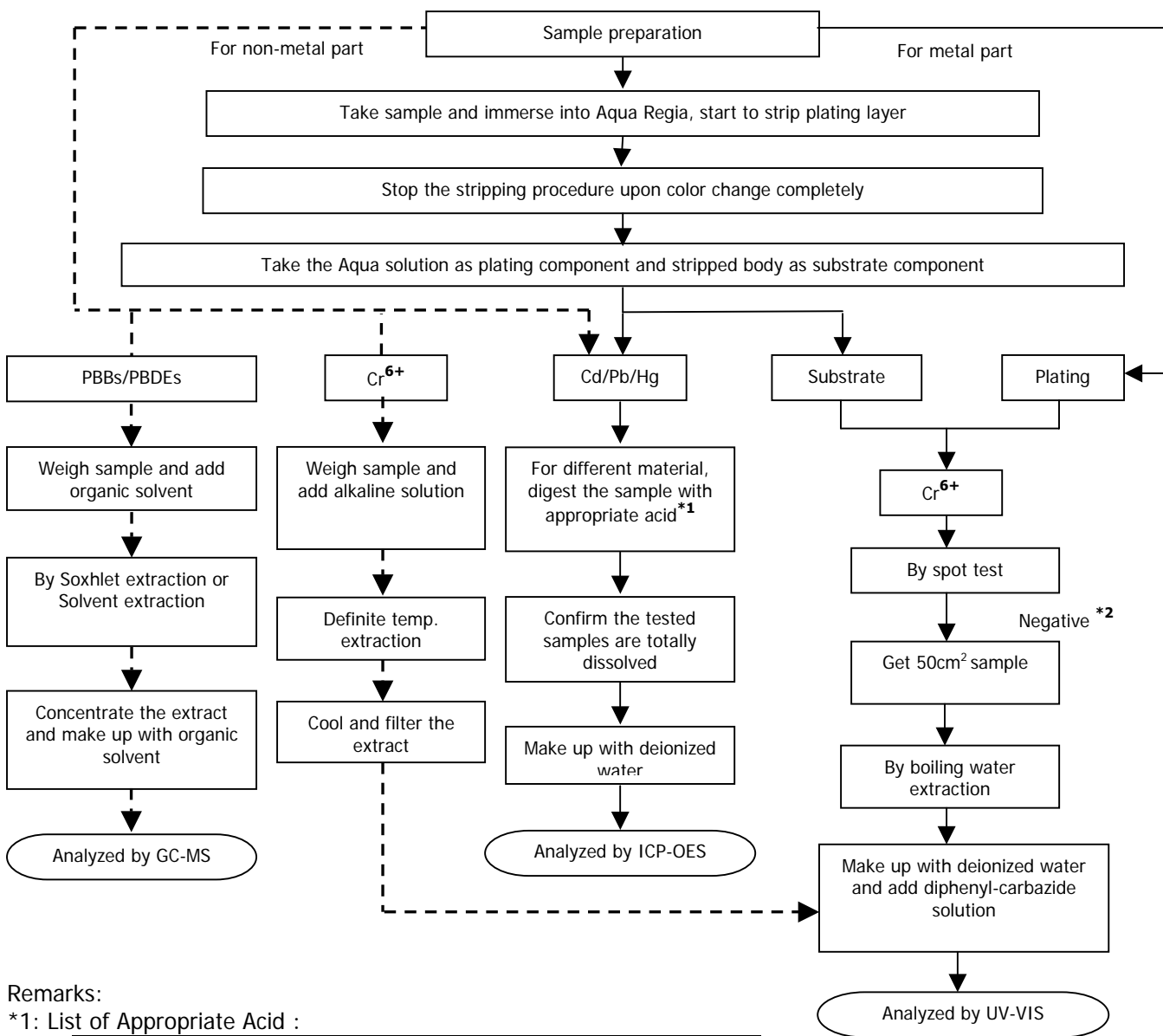


Test Report

Number: TWNC00330777

Test Conducted
Measurement Flowchart:

Test for Cd/Pb/Hg/Chromium (VI)/PBBs/PBDEs Contents
Reference Method: IEC 62321 edition 1.0:2008



Remarks:

*1: List of Appropriate Acid :

Material	Acid Added for Digestion
Polymers	HNO ₃ , HCl, HF, H ₂ O ₂ , H ₃ BO ₃
Metals	HNO ₃ , HCl, HF
Electronics	HNO ₃ , HCl, H ₂ O ₂ , HBF ₄

*2: If the result of spot test is positive, Chromium VI would be determined as detected.



Test Report

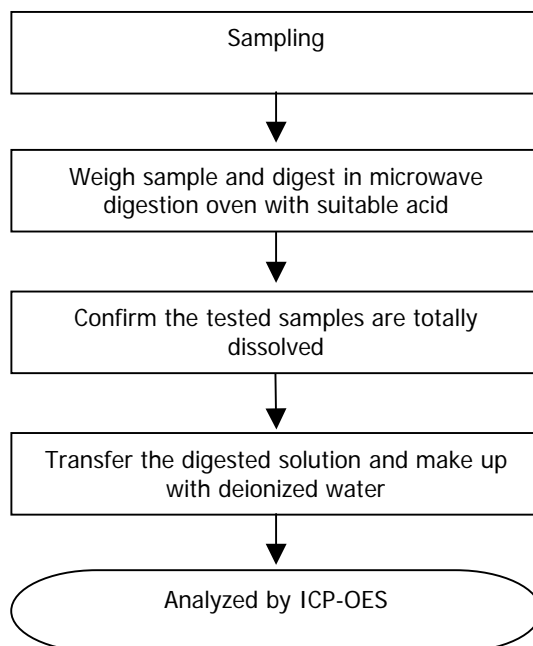
Number: TWNC00330777

Test Conducted

Measurement Flowchart:

Test for Heavy Metal (Sb) Contents

Reference Method : USEPA 3052



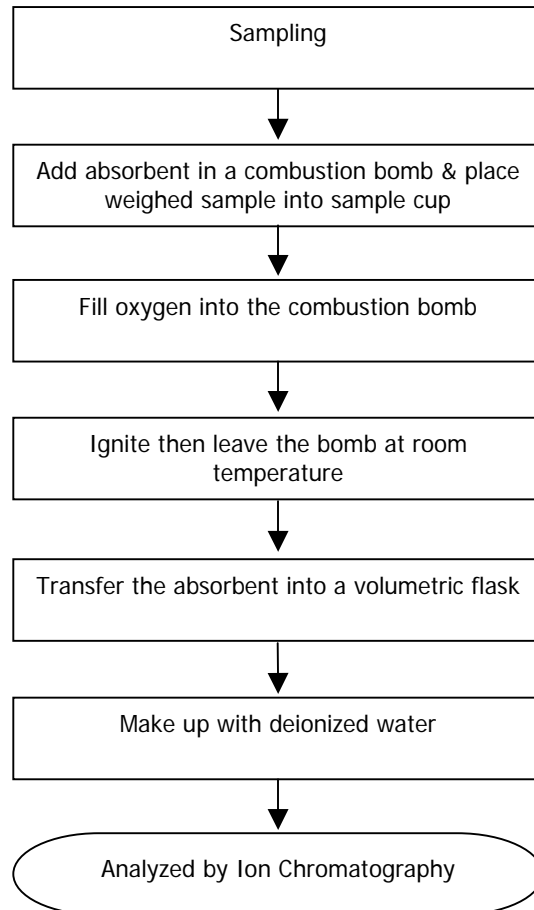
Test Report

Number: TWNC00330777

Test Conducted

Measurement Flowchart:

Test for Halogen Contents
Reference Method : EN 14582



Test Report

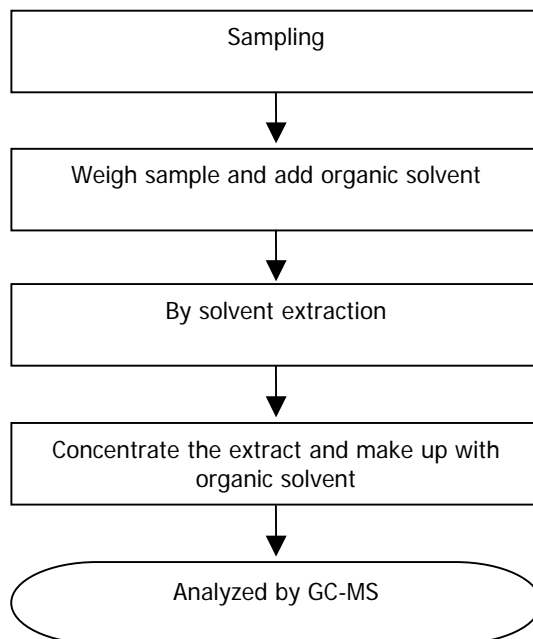
Number: TWNC00330777

Test Conducted

Measurement Flowchart:

Test for Phthalates Contents

Reference Method: EN 14372: 2004

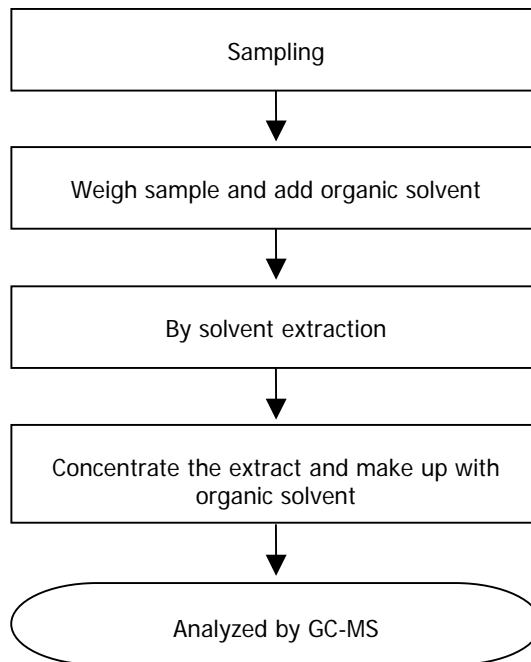


Test Report

Number: TWNC00330777

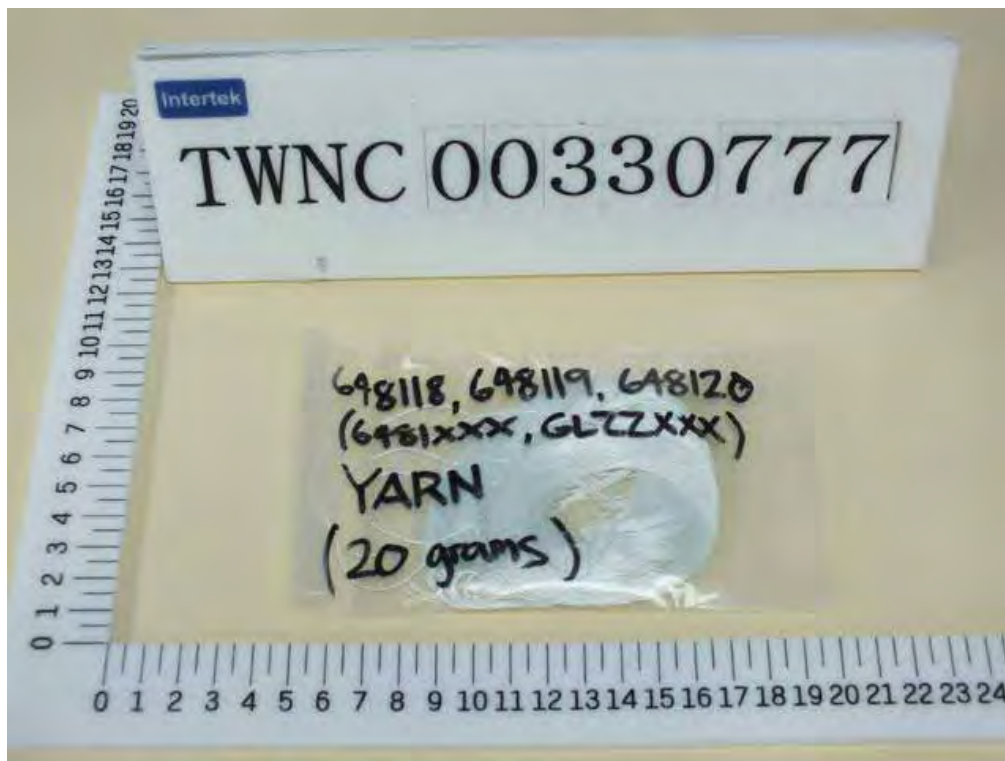
Test Conducted
Measurement Flowchart:

Test for Hexabromocyclododecane (HBCDD) Content
Reference Method : USEPA 3540C



Test Report

Number: TWNC00330777



End of Report

This report is made solely on the basis of your instructions and/or information and materials supplied by you. It is not intended to be a recommendation for any particular course of action. Intertek does not accept a duty of care or any other responsibility to any person other than the Client in respect of this report and only accepts liability to the Client insofar as is expressly contained in the terms and conditions governing Intertek's provision of services to you. Intertek makes no warranties or representations either express or implied with respect to this report save as provided for in those terms and conditions. We have aimed to conduct the Review on a diligent and careful basis and we do not accept any liability to you for any loss arising out of or in connection with this report, in contract, tort, by statute or otherwise, except in the event of our gross negligence or wilful misconduct.



Page 10 of 12

Intertek Testing Services Taiwan Ltd.

8F., No. 423, Ruiguang Rd., Neihu District, Taipei 11492, Taiwan, R.O.C.

全國公證檢驗股份有限公司

11492 台北市內湖區瑞光路 423 號 8 樓

Tel: (+886-2) 6602-2888 · 2797-8885 Fax: (+886-2) 6602-2410

Test Report

Applicant: Littelfuse Philippines Inc.
LIMA Technology Center, Lipa City,
Malvar, Batangas

Number : TWNC00340082
Date : Nov 07, 2013

Sample Description:

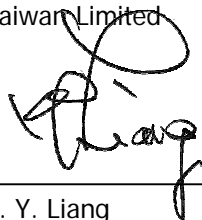
One (1) group of submitted samples said to be :

Part Description : Yarn(648xxx)
Part Number : 648106-001
Date Sample Received : Oct 30, 2013
Date Test Started : Oct 31, 2013

Test Conducted :

As requested by the applicant, for details please refer to attached pages.

Authorized by:
On Behalf of Intertek Testing Services
Taiwan Limited



K. Y. Liang
Director



Test Report

Number: TWNC00340082

Test Conducted

Test Result Summary:

Test Result Summary:				
Test Item	Unit	Test Method	Result	RL
			Transparent yarn	
Heavy Metal				
Cadmium (Cd) content	ppm	With reference to IEC 62321-5: 2013, by microwave or acid digestion and determined by ICP-OES.	ND	2
Lead (Pb) content	ppm	With reference to IEC 62321-5: 2013, by microwave or acid digestion and determined by ICP-OES.	ND	2
Mercury (Hg) content	ppm	With reference to IEC 62321-4: 2013, by microwave or acid digestion and determined by ICP-OES.	ND	2
Chromium VI (Cr ⁶⁺) content	ppm	With reference to IEC 62321: 2008, by alkaline digestion and determined by UV-Vis Spectrophotometer.	ND	1
Polybrominated Biphenyls (PBBs)				
Monobrominated Biphenyls (MonoBB)	ppm	With reference to IEC 62321: 2008, by solvent extraction and determined by GC-MS and further HPLC-DAD confirmation when necessary.	ND	5
Dibrominated Biphenyls (DiBB)	ppm		ND	5
Tribrominated Biphenyls (TriBB)	ppm		ND	5
Tetrabrominated Biphenyls (TetraBB)	ppm		ND	5
Pentabrominated Biphenyls (PentaBB)	ppm		ND	5
Hexabrominated Biphenyls (HexaBB)	ppm		ND	5
Heptabrominated Biphenyls (HeptaBB)	ppm		ND	5
Octabrominated Biphenyls (OctaBB)	ppm		ND	5
Nonabrominated Biphenyls (NonaBB)	ppm		ND	5
Decabrominated Biphenyl (DecaBB)	ppm		ND	5



Test Report

Number: TWNC00340082

Test Conducted

Test Item	Unit	Test Method	Result	RL
			Transparent yarn	
Polybrominated Diphenyl Ethers (PBDEs)				
Monobrominated Diphenyl Ethers (MonoBDE)	ppm	With reference to IEC 62321: 2008, by solvent extraction and determined by GC-MS and further HPLC-DAD confirmation when necessary.	ND	5
Dibrominated Diphenyl Ethers (DiBDE)	ppm		ND	5
Tribrominated Diphenyl Ethers (TriBDE)	ppm		ND	5
Tetrabrominated Diphenyl Ethers (TetraBDE)	ppm		ND	5
Pentabrominated Diphenyl Ethers (PentaBDE)	ppm		ND	5
Hexabrominated Diphenyl Ethers (HexaBDE)	ppm		ND	5
Heptabrominated Diphenyl Ethers (HeptaBDE)	ppm		ND	5
Octabrominated Diphenyl Ethers (OctaBDE)	ppm		ND	5
Nonabrominated Diphenyl Ethers (NonaBDE)	ppm		ND	5
Decabrominated Diphenyl Ether (DecaBDE)	ppm		ND	5
Halogen Content				
Fluorine (F)	ppm	With reference to EN 14582:2007 by combustion bomb with oxygen and determined by Ion Chromatography.	ND	50
Chlorine (Cl)	ppm		ND	50
Bromine (Br)	ppm		ND	50
Iodine (I)	ppm		ND	50

Remarks: ppm = Parts per million based on weight of tested sample = mg/kg
 ND = Not detected
 RL = Reporting limit, quantitation limit of analyte in sample

Responsibility of Chemist: Kevin Liu/ Irene Chiou/ Vico Lin

Date Sample Received : Oct 30, 2013
 Test Period : Oct 31, 2013 to Nov 07, 2013

RoHS Limit

Restricted Substances	Limits
Cadmium (Cd) content	0.01% (100ppm)
Lead (Pb) content	0.1% (1000ppm)
Mercury (Hg) content	0.1% (1000ppm)
Chromium VI (Cr ⁶⁺) content	0.1% (1000ppm)
Polybrominated Biphenyls (PBBs)	0.1% (1000ppm)
Polybrominated Diphenyl Ethers (PBDEs)	0.1% (1000ppm)

The above limits were quoted from Annex II of 2011/65/EU for homogeneous material.



Test Report

Number: TWNC00340082

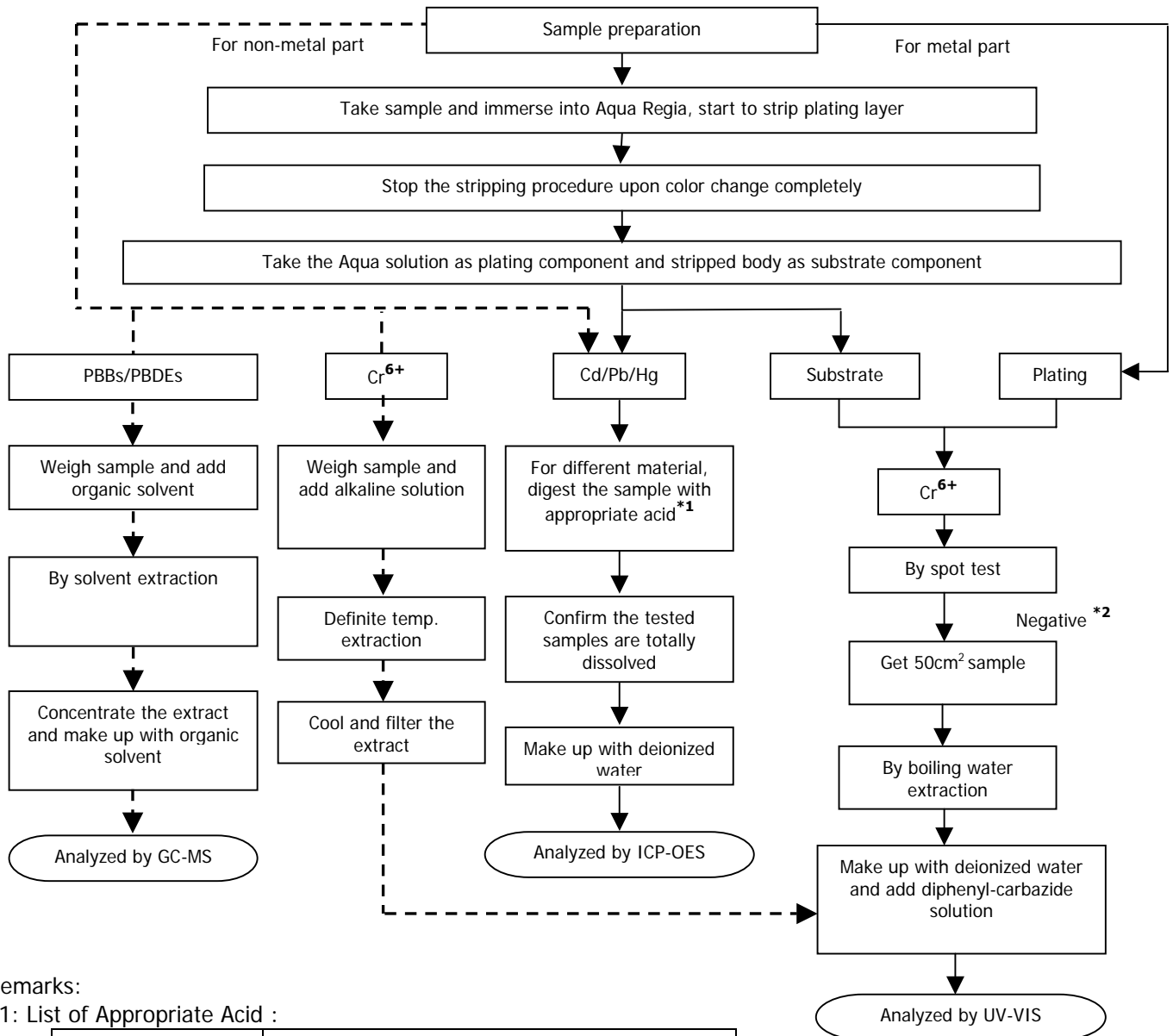
Test Conducted

Measurement Flowchart:

Test for Cd/Pb/Hg/Chromium (VI)/PBBs/PBDEs Contents

Reference Standard : Cd/Pb: IEC 62321-5:2013; Hg: IEC 62321-4:2013;

Chromium (VI)/PBBs/PBDEs: IEC 62321:2008



Remarks:

*1: List of Appropriate Acid :

Material	Acid Added for Digestion
Polymers	HNO ₃ , HCl, HF, H ₂ O ₂ , H ₃ BO ₃
Metals	HNO ₃ , HCl, HF
Electronics	HNO ₃ , HCl, H ₂ O ₂ , HBF ₄

*2: If the result of spot test is positive, Chromium VI would be determined as detected.



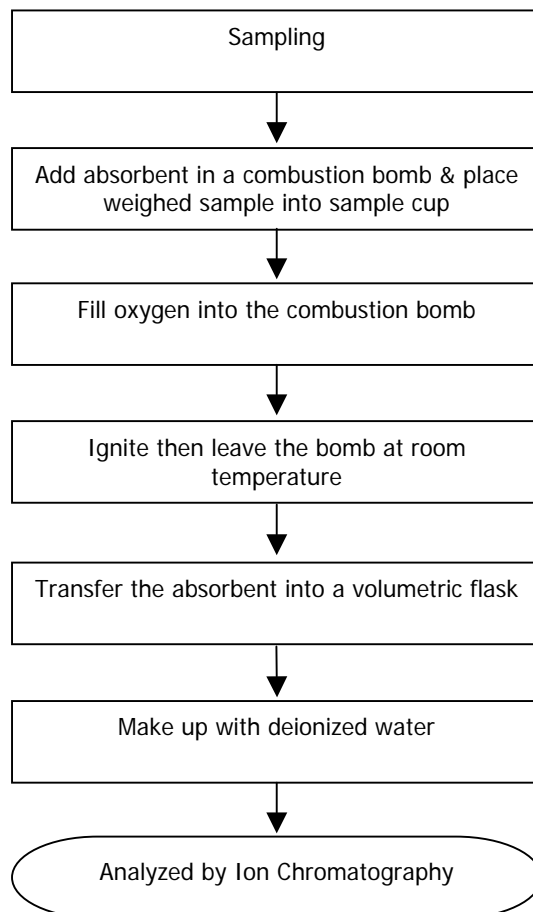
Test Report

Number: TWNC00340082

Test Conducted

Measurement Flowchart:

Test for Halogen Contents
Reference Method : EN 14582



Test Report

Number: TWNC00340082



End of Report

This report is made solely on the basis of your instructions and/or information and materials supplied by you. It is not intended to be a recommendation for any particular course of action. Intertek does not accept a duty of care or any other responsibility to any person other than the Client in respect of this report and only accepts liability to the Client insofar as is expressly contained in the terms and conditions governing Intertek's provision of services to you. Intertek makes no warranties or representations either express or implied with respect to this report save as provided for in those terms and conditions. We have aimed to conduct the Review on a diligent and careful basis and we do not accept any liability to you for any loss arising out of or in connection with this report, in contract, tort, by statute or otherwise, except in the event of our gross negligence or wilful misconduct.



Page 6 of 8

Intertek Testing Services Taiwan Ltd.

8F., No. 423, Ruiguang Rd., Neihu District, Taipei 11492, Taiwan, R.O.C.

全國公證檢驗股份有限公司

11492 台北市內湖區瑞光路 423 號 8 樓

Tel: (+886-2) 6602-2888 · 2797-8885 Fax: (+886-2) 6602-2410

Test Report

Applicant: Littelfuse Philippines Inc.
LIMA Technology Center, Lipa City,
Malvar, Batangas

Number : TWNC00340083
Date : Nov 07, 2013

Sample Description:

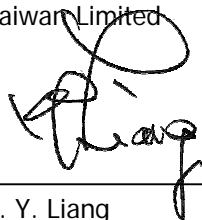
One (1) group of submitted samples said to be :

Part Description : Ceramic Yarn
Part Number : 648112-001
Date Sample Received : Oct 30, 2013
Date Test Started : Oct 31, 2013

Test Conducted :

As requested by the applicant, for details please refer to attached pages.

Authorized by:
On Behalf of Intertek Testing Services
Taiwan Limited



K. Y. Liang
Director



Test Report

Number: TWNC00340083

Test Conducted

Test Result Summary:

Test Result Summary:				
Test Item	Unit	Test Method	Result	RL
			Transparent yarn	
Heavy Metal				
Cadmium (Cd) content	ppm	With reference to IEC 62321-5: 2013, by microwave or acid digestion and determined by ICP-OES.	ND	2
Lead (Pb) content	ppm	With reference to IEC 62321-5: 2013, by microwave or acid digestion and determined by ICP-OES.	ND	2
Mercury (Hg) content	ppm	With reference to IEC 62321-4: 2013, by microwave or acid digestion and determined by ICP-OES.	ND	2
Chromium VI (Cr ⁶⁺) content	ppm	With reference to IEC 62321: 2008, by alkaline digestion and determined by UV-Vis Spectrophotometer.	ND	1
Polybrominated Biphenyls (PBBs)				
Monobrominated Biphenyls (MonoBB)	ppm	With reference to IEC 62321: 2008, by solvent extraction and determined by GC-MS and further HPLC-DAD confirmation when necessary.	ND	5
Dibrominated Biphenyls (DiBB)	ppm		ND	5
Tribrominated Biphenyls (TriBB)	ppm		ND	5
Tetrabrominated Biphenyls (TetraBB)	ppm		ND	5
Pentabrominated Biphenyls (PentaBB)	ppm		ND	5
Hexabrominated Biphenyls (HexaBB)	ppm		ND	5
Heptabrominated Biphenyls (HeptaBB)	ppm		ND	5
Octabrominated Biphenyls (OctaBB)	ppm		ND	5
Nonabrominated Biphenyls (NonaBB)	ppm		ND	5
Decabrominated Biphenyl (DecaBB)	ppm		ND	5



Test Report

Number: TWNC00340083

Test Conducted

Test Item	Unit	Test Method	Result	RL
			Transparent yarn	
Polybrominated Diphenyl Ethers (PBDEs)				
Monobrominated Diphenyl Ethers (MonoBDE)	ppm	With reference to IEC 62321: 2008, by solvent extraction and determined by GC-MS and further HPLC-DAD confirmation when necessary.	ND	5
Dibrominated Diphenyl Ethers (DiBDE)	ppm		ND	5
Tribrominated Diphenyl Ethers (TriBDE)	ppm		ND	5
Tetrabrominated Diphenyl Ethers (TetraBDE)	ppm		ND	5
Pentabrominated Diphenyl Ethers (PentaBDE)	ppm		ND	5
Hexabrominated Diphenyl Ethers (HexaBDE)	ppm		ND	5
Heptabrominated Diphenyl Ethers (HeptaBDE)	ppm		ND	5
Octabrominated Diphenyl Ethers (OctaBDE)	ppm		ND	5
Nonabrominated Diphenyl Ethers (NonaBDE)	ppm		ND	5
Decabrominated Diphenyl Ether (DecaBDE)	ppm		ND	5
Halogen Content				
Fluorine (F)	ppm	With reference to EN 14582:2007 by combustion bomb with oxygen and determined by Ion Chromatography.	ND	50
Chlorine (Cl)	ppm		ND	50
Bromine (Br)	ppm		ND	50
Iodine (I)	ppm		ND	50

Remarks: ppm = Parts per million based on weight of tested sample = mg/kg
 ND = Not detected
 RL = Reporting limit, quantitation limit of analyte in sample

Responsibility of Chemist: Kevin Liu/ Irene Chiou/ Vico Lin

Date Sample Received : Oct 30, 2013
 Test Period : Oct 31, 2013 to Nov 07, 2013

RoHS Limit

Restricted Substances	Limits
Cadmium (Cd) content	0.01% (100ppm)
Lead (Pb) content	0.1% (1000ppm)
Mercury (Hg) content	0.1% (1000ppm)
Chromium VI (Cr ⁶⁺) content	0.1% (1000ppm)
Polybrominated Biphenyls (PBBs)	0.1% (1000ppm)
Polybrominated Diphenyl Ethers (PBDEs)	0.1% (1000ppm)

The above limits were quoted from Annex II of 2011/65/EU for homogeneous material.



Test Report

Number: TWNC00340083

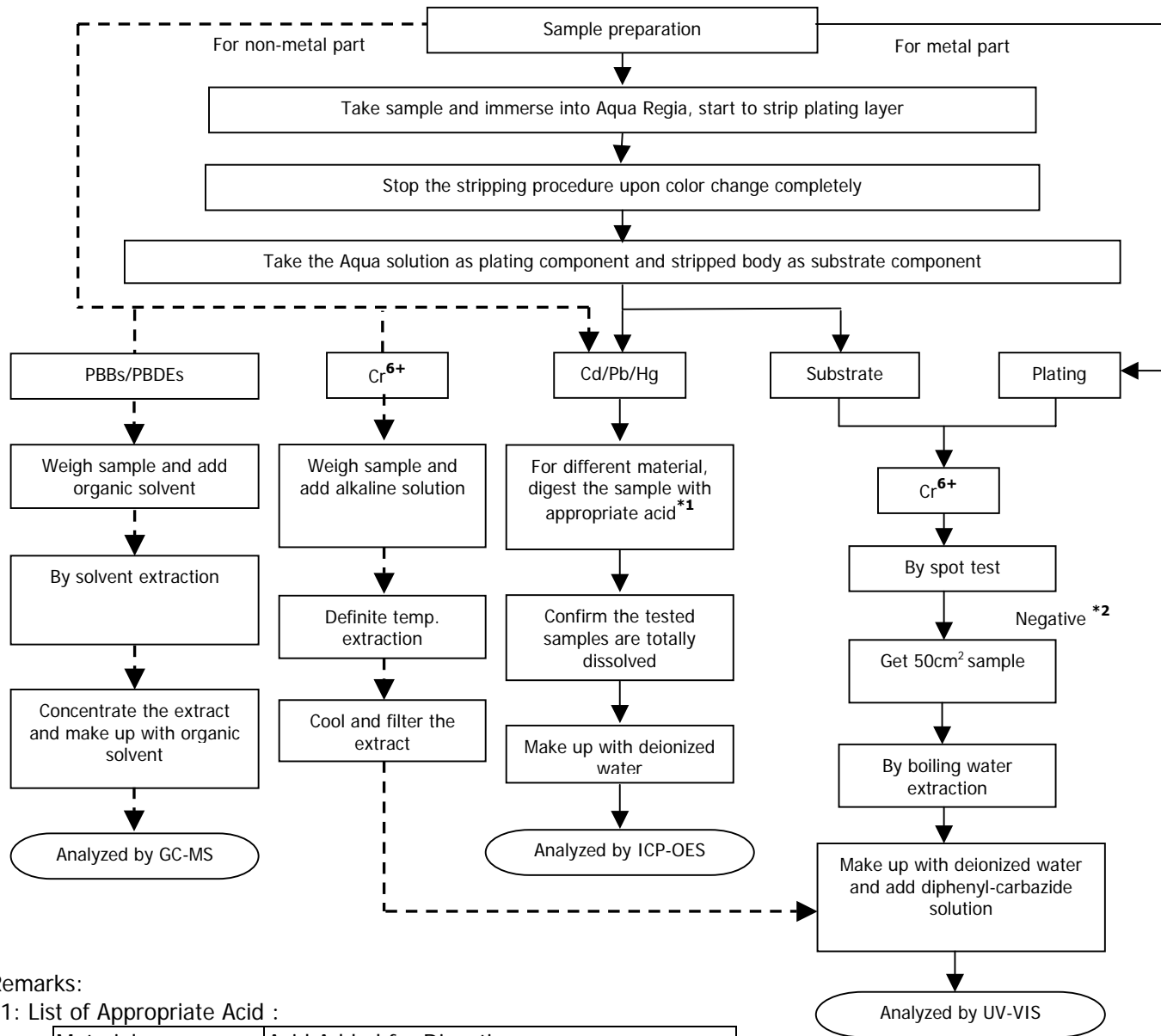
Test Conducted

Measurement Flowchart:

Test for Cd/Pb/Hg/Chromium (VI)/PBBs/PBDEs Contents

Reference Standard : Cd/Pb: IEC 62321-5:2013; Hg: IEC 62321-4:2013;

Chromium (VI)/PBBs/PBDEs: IEC 62321:2008



Remarks:

*1: List of Appropriate Acid :

Material	Acid Added for Digestion
Polymers	HNO ₃ , HCl, HF, H ₂ O ₂ , H ₃ BO ₃
Metals	HNO ₃ , HCl, HF
Electronics	HNO ₃ , HCl, H ₂ O ₂ , HBF ₄

*2: If the result of spot test is positive, Chromium VI would be determined as detected.



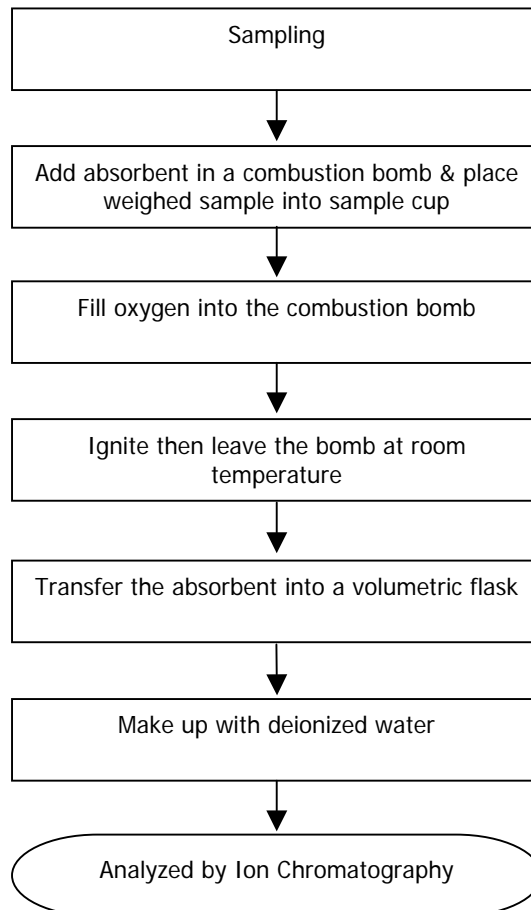
Test Report

Number: TWNC00340083

Test Conducted

Measurement Flowchart:

Test for Halogen Contents
Reference Method : EN 14582



Test Report

Number: TWNC00340083



End of Report

This report is made solely on the basis of your instructions and/or information and materials supplied by you. It is not intended to be a recommendation for any particular course of action. Intertek does not accept a duty of care or any other responsibility to any person other than the Client in respect of this report and only accepts liability to the Client insofar as is expressly contained in the terms and conditions governing Intertek's provision of services to you. Intertek makes no warranties or representations either express or implied with respect to this report save as provided for in those terms and conditions. We have aimed to conduct the Review on a diligent and careful basis and we do not accept any liability to you for any loss arising out of or in connection with this report, in contract, tort, by statute or otherwise, except in the event of our gross negligence or wilful misconduct.



Page 6 of 8

Intertek Testing Services Taiwan Ltd.

8F., No. 423, Ruiguang Rd., Neihu District, Taipei 11492, Taiwan, R.O.C.

全國公證檢驗股份有限公司

11492 台北市內湖區瑞光路 423 號 8 樓

Tel: (+886-2) 6602-2888 · 2797-8885 Fax: (+886-2) 6602-2410



Test Report

Applicant: Littelfuse Philippines Inc.
LIMA Technology Center, Lipa City,
Malvar, Batangas

Number : TWNC00306991
Date : Apr 16, 2013

Sample Description:

One (1) group of submitted samples said to be :
Part Description : Black Ink
Part Number : 425809
Date Sample Received : Apr 10, 2013
Date Test Started : Apr 11, 2013

Test Conducted :

As requested by the applicant, for details please refer to attached pages.

Authorized by:
On Behalf of Intertek Testing Services
Taiwan Limited



K. Y. Liang
Director



Page 1 of 10

Intertek Testing Services Taiwan Ltd.

8F., No. 423, Ruiguang Rd., Neihu District, Taipei 11492, Taiwan, R.O.C.

全國公證檢驗股份有限公司

11492 台北市內湖區瑞光路 423 號 8 樓

Tel: (+886-2) 6602-2888 · 2797-8885 Fax: (+886-2) 6602-2410

Test Conducted

(I) Test Result Summary:

Test Item	Unit	Test Method	Result	RL
			Black paste	
Heavy Metal				
Cadmium (Cd) Content	ppm	With reference to IEC 62321: 2008, by microwave digestion and determined by ICP-OES.	ND	2
Lead (Pb) Content	ppm	With reference to IEC 62321: 2008, by microwave digestion and determined by ICP-OES.	ND	2
Mercury (Hg) Content	ppm	With reference to IEC 62321: 2008, by microwave digestion and determined by ICP-OES.	ND	2
Chromium VI (Cr ⁶⁺) Content	ppm	With reference to IEC 62321: 2008, by alkaline digestion and determined by UV-Vis Spectrophotometer.	ND	1
Polybrominated Biphenyls (PBBs)				
Monobrominated Biphenyls (MonoBB)	ppm	With reference to IEC 62321: 2008, by solvent extraction and determined by GC-MS and further HPLC-DAD confirmation when necessary.	ND	5
Dibrominated Biphenyls (DiBB)	ppm		ND	5
Tribrominated Biphenyls (TriBB)	ppm		ND	5
Tetrabrominated Biphenyls (TetraBB)	ppm		ND	5
Pentabrominated Biphenyls (PentaBB)	ppm		ND	5
Hexabrominated Biphenyls (HexaBB)	ppm		ND	5
Heptabrominated Biphenyls (HeptaBB)	ppm		ND	5
Octabrominated Biphenyls (OctaBB)	ppm		ND	5
Nonabrominated Biphenyls (NonaBB)	ppm		ND	5
Decabrominated Biphenyl (DecaBB)	ppm		ND	5



Intertek Testing Services Taiwan Ltd.

8F., No. 423, Ruiguang Rd., Neihu District, Taipei 11492, Taiwan, R.O.C.

全國公證檢驗股份有限公司

11492 台北市內湖區瑞光路 423 號 8 樓

Tel: (+886-2) 6602-2888 · 2797-8885 Fax: (+886-2) 6602-2410

Test Conducted

Test Item	Unit	Test Method	Result	RL
			Black paste	
Polybrominated Diphenyl Ethers (PBDEs)				
Monobrominated Diphenyl Ethers (MonoBDE)	ppm	With reference to IEC 62321: 2008, by solvent extraction and determined by GC-MS and further HPLC-DAD confirmation when necessary.	ND	5
Dibrominated Diphenyl Ethers (DiBDE)	ppm		ND	5
Tribrominated Diphenyl Ethers (TriBDE)	ppm		ND	5
Tetrabrominated Diphenyl Ethers (TetraBDE)	ppm		ND	5
Pentabrominated Diphenyl Ethers (PentaBDE)	ppm		ND	5
Hexabrominated Diphenyl Ethers (HexaBDE)	ppm		ND	5
Heptabrominated Diphenyl Ethers (HeptaBDE)	ppm		ND	5
Octabrominated Diphenyl Ethers (OctaBDE)	ppm		ND	5
Nonabrominated Diphenyl Ethers (NonaBDE)	ppm		ND	5
Decabrominated Diphenyl Ether (DecaBDE)	ppm		ND	5
Phthalates				
Di(2-ethylhexyl) Phthalate (DEHP)	ppm	With reference to EN 14372: 2004, by solvent extraction and determined by GC-MS.	ND	50
Dibutyl Phthalate (DBP)	ppm		ND	50
Benzyl Butyl Phthalate (BBP)	ppm		ND	50
Halogen Content				
Fluorine (F)	ppm	With reference to EN 14582:2007 by calorimetric bomb with oxygen and determined by Ion Chromatograph.	ND	50
Chlorine (Cl)	ppm		ND	50
Bromine (Br)	ppm		ND	50
Iodine (I)	ppm		ND	50
Others				
Hexabromo cyclododecane (HBCDD)	ppm	With reference to USEPA 3540C, by solvent extraction and determined by GC-MS.	ND	10





Number : TWNC00306991

Test Conducted

Remarks: ppm = parts per million based on wet weight of tested sample = mg/kg
ND = Not detected
RL = Reporting Limit, Quantitation limit of analyte in sample

Responsibility of Chemist: Kevin Liu/ Irene Chiou/ Vico Lin

Date Sample Received : Apr 10, 2013

Test Period : Apr 11, 2013 to Apr 15, 2013

(II) Limit:

RoHS Limit

<u>Restricted Substances</u>	<u>Limits</u>
Cadmium (Cd) content	0.01% (100ppm)
Lead (Pb) content	0.1% (1000ppm)
Mercury (Hg) content	0.1% (1000ppm)
Chromium VI (Cr ⁶⁺) content	0.1% (1000ppm)
Polybrominated Biphenyls (PBBs)	0.1% (1000ppm)
Polybrominated Diphenyl Ehters (PBDEs)	0.1% (1000ppm)

The above limits were quoted from Annex II of 2011/65/EU for homogeneous material.



Page 4 of 10

Intertek Testing Services Taiwan Ltd.

8F., No. 423, Ruiguang Rd., Neihu District, Taipei 11492, Taiwan, R.O.C.

全國公證檢驗股份有限公司

11492 台北市內湖區瑞光路 423 號 8 樓

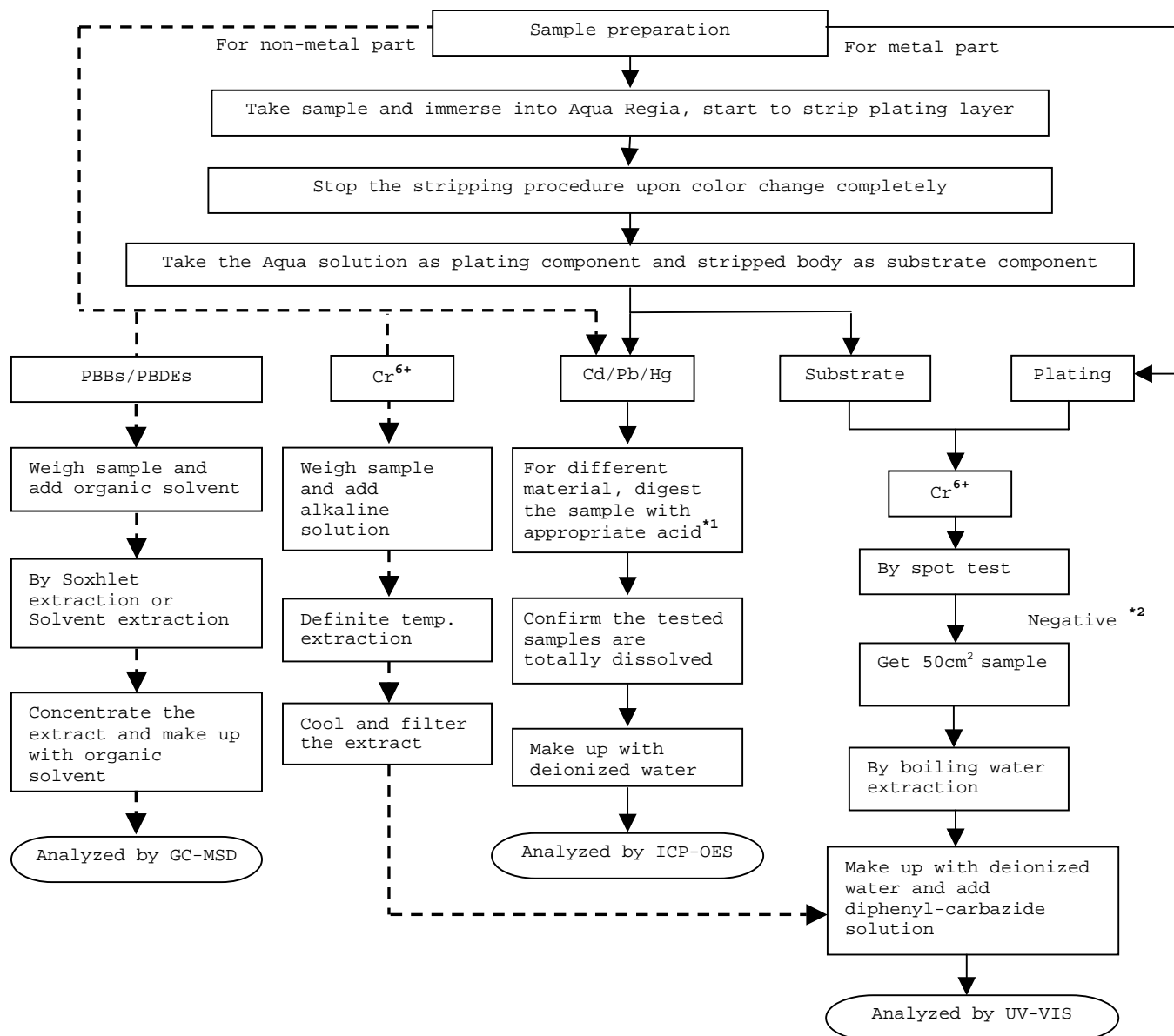
Tel: (+886-2) 6602-2888 · 2797-8885 Fax: (+886-2) 6602-2410

Test Conducted

(Ⅲ) Measurement Flowchart:

Test for Cd/Pb/Hg/Chromium (VI)/PBBS/PBDES Contents

Reference Standard: IEC 62321 edition 1.0:2008



Number : TWNC00306991

Test Conducted

Remarks:

*1: List of Appropriate Acid:

Material	Acid Added for Digestion
Polymers	HNO ₃ , HCl, HF, H ₂ O ₂ , H ₃ BO ₃
Metals	HNO ₃ , HCl, HF
Electronics	HNO ₃ , HCl, H ₂ O ₂ , HBF ₄

*2: If the result of spot test is positive, Chromium VI would be determined as detected.



Page 6 of 10

Intertek Testing Services Taiwan Ltd.

8F., No. 423, Ruiguang Rd., Neihu District, Taipei 11492, Taiwan, R.O.C.

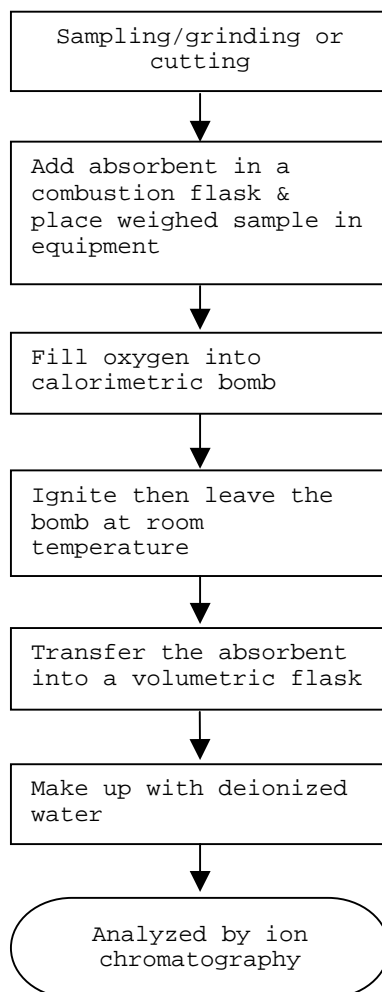
全國公證檢驗股份有限公司

11492 台北市內湖區瑞光路 423 號 8 樓

Tel: (+886-2) 6602-2888 · 2797-8885 Fax: (+886-2) 6602-2410

Test Conducted

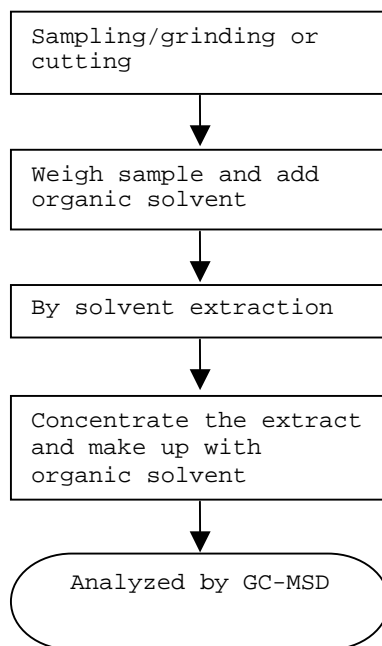
Test for Halogen Content
Reference Standard : EN 14582



Test Conducted

Test For Phthalates Contents

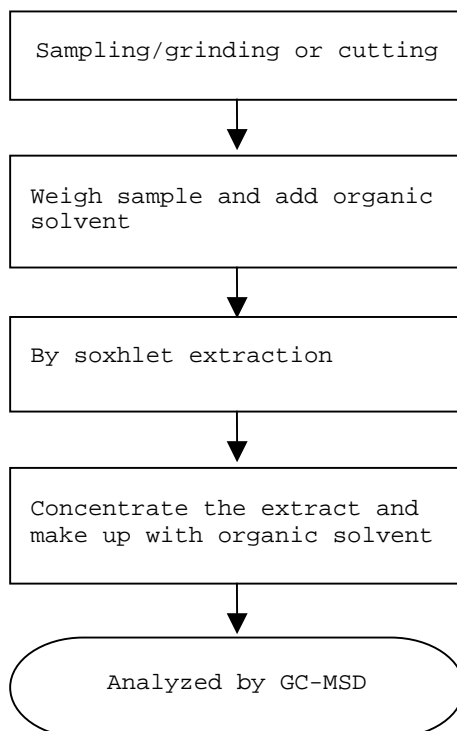
Reference Method: EN 14372: 2004



Test Conducted

Test For Hexabromocyclododecane (HBCDD)

Reference Standard : USEPA 3540C



End of Report

This report is made solely on the basis of your instructions and/or information and materials supplied by you. It is not intended to be a recommendation for any particular course of action. Intertek does not accept a duty of care or any other responsibility to any person other than the Client in respect of this report and only accepts liability to the Client insofar as is expressly contained in the terms and conditions governing Intertek's provision of services to you. Intertek makes no warranties or representations either express or implied with respect to this report save as provided for in those terms and conditions. We have aimed to conduct the Review on a diligent and careful basis and we do not accept any liability to you for any loss arising out of or in connection with this report, in contract, tort, by statute or otherwise, except in the event of our gross negligence or wilful misconduct.



Number : TWNC00306991

Test Conducted

Photo





Test Report

Number : TWNC00292460

Applicant: Littelfuse Philippines Inc.
LIMA Technology Center, Lipa City,
Malvar, Batangas

Date : Jan 07, 2013

Sample Description:

One (1) group of submitted samples said to be :

Part Description : Ink
Part Number : 425809
Date Sample Received : Dec 27, 2012
Date Test Started : Dec 27, 2012

Test Conducted :

As requested by the applicant, for details please refer to attached pages.

Authorized by:

On Behalf of Intertek Testing Services
Taiwan Limited



K. Y. Liang
Director



Page 1 of 4

Intertek Testing Services Taiwan Ltd.

8F., No. 423, Ruiguang Rd., Neihu District, Taipei 11492, Taiwan, R.O.C.

全國公證檢驗股份有限公司

11492 台北市內湖區瑞光路 423 號 8 樓

Tel: (+886-2) 6602-2888 · 2797-8885 Fax: (+886-2) 6602-2410

Number : TWNC00292460

Test Conducted

(I) Test Result Summary :

<u>Test Item</u>	<u>Result (ppm)</u>
	<u>Black ink</u>
Antimony (Sb) Content	ND

Remarks: ppm = Parts per million based on wet weight of tested sample =
mg/kg
ND = Not detected

Responsibility of Chemist : Irene Chiou / Kevin Liu

Date Sample Received : Dec 27, 2012

Test Period : Dec 27, 2012 To Jan 03, 2013

(II) Test Method:

<u>Test Item</u>	<u>Test Method</u>	<u>Reporting Limit</u>
Antimony (Sb) Content	With reference to USEPA 3052, by microwave digestion until the tested samples are totally dissolved and determined by ICP-OES.	2 ppm

Remark: Reporting limit = Quantitation limit of analyte in sample



Page 2 of 4

Intertek Testing Services Taiwan Ltd.

8F., No. 423, Ruiguang Rd., Neihu District, Taipei 11492, Taiwan, R.O.C.

全國公證檢驗股份有限公司

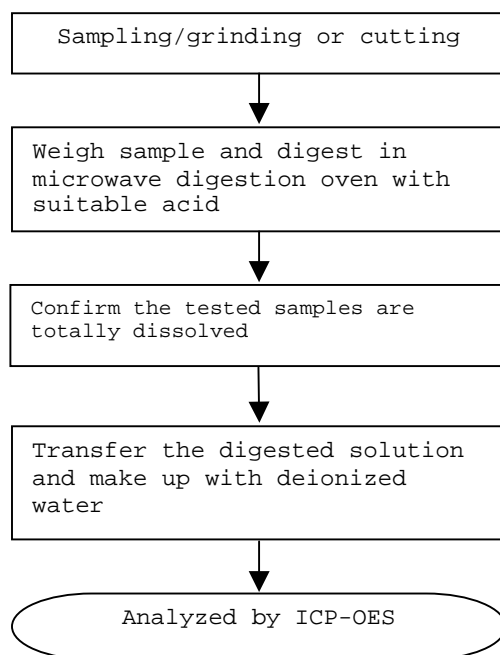
11492 台北市內湖區瑞光路 423 號 8 樓

Tel: (+886-2) 6602-2888 · 2797-8885 Fax: (+886-2) 6602-2410

Test Conducted

(III) Measurement Flowchart:

Test For Heavy Metal (Sb) Contents
Reference Standard : USEPA 3052



End of Report

This report is made solely on the basis of your instructions and/or information and materials supplied by you. It is not intended to be a recommendation for any particular course of action. Intertek does not accept a duty of care or any other responsibility to any person other than the Client in respect of this report and only accepts liability to the Client insofar as is expressly contained in the terms and conditions governing Intertek's provision of services to you. Intertek makes no warranties or representations either express or implied with respect to this report save as provided for in those terms and conditions. We have aimed to conduct the Review on a diligent and careful basis and we do not accept any liability to you for any loss arising out of or in connection with this report, in contract, tort, by statute or otherwise, except in the event of our gross negligence or wilful misconduct.



Number : TWNC00292460

Test Conducted

Photo

